



Date 06-08-2021

## CALIBRATION CERTIFICATE

This is to certify that the Hematology analyzer **Sysmex XN-350** bearing serial number 12783 installed at **Reliance Pathology lab Medical Center, Shahdol** as calibrated on 06-08-2021

Calibrator Used: XNL Calibrator

Lot No: 11932101

Expiry Date: 15-08-2021

The report of Blank Cycle, Repeatability and Calibration values were all found in acceptable range & Calibration data is attached with this certificate.

Next Calibration Cycle is due on 05-08-2022

For Transasia Bio Medicals Ltd

  
Abhishek Choudhary

Sr. Service Engineer

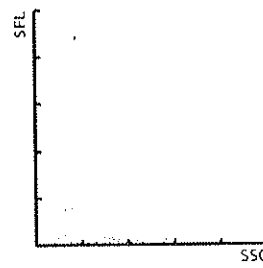
Sample No.: BACKGROUNDCHECK  
 Patient ID:  
 Name:  
 Sample Comment:

Adapter:  
 Ward:

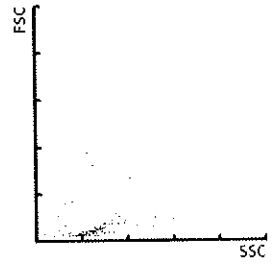
Pos.: 06/08/2021 15:54:14 WB  
 Doctor:  
 Birth: Sex:  
 Nickname: XN-L

WBC	0.00	[10 <sup>3</sup> /uL]		
RBC	0.00	[10 <sup>6</sup> /uL]		
HGB	0.0	[g/dL]		
HCT	0.0	[%]		
MCV	----	[fL]		
MCH	----	[pg]		
MCHC	----	[g/dL]		
PLT	1	[10 <sup>3</sup> /uL]		
RDW-SD	----	[fL]		
RDW-CV	----	[%]		
PDW	----	[fL]		
MPV	----	[fL]		
P-LCR	----	[%]		
PCT	----	[%]		
NEUT	----	[10 <sup>3</sup> /uL]	----	[%]
LYMPH	----	[10 <sup>3</sup> /uL]	----	[%]
MONO	----	[10 <sup>3</sup> /uL]	----	[%]
EO	----	[10 <sup>3</sup> /uL]	----	[%]
BASO	----	[10 <sup>3</sup> /uL]	----	[%]
IG	----	[10 <sup>3</sup> /uL]	----	[%]

WDF



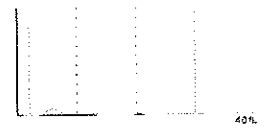
WDF - CBC



RBC



PLT



WBC IP Message

RBC IP Message

PLT IP Message

Calibrator Calibration History

Instrument Nickname: XN-L  
 Material: XN CAL

Calibration Date: 06/08/2021 18:27:52  
 Lot No.: 11932101

Logon Name: sysmex

	WBC	RBC	HGB	HCT	PLT
Target	7.098	4.376	12.00	34.53	246.5
No. 2	6.58	4.28	12.1	34.7	235
No. 3	6.54	4.29	12.1	34.8	242
No. 4	6.66	4.32	12.1	35.1	242
No. 5	6.69	4.33	12.2	35.1	252
No. 6	6.76	4.29	12.0	34.7	252
No. 7	6.64	4.29	12.0	34.8	259
No. 8	6.59	4.27	12.1	34.7	245
No. 9	6.59	4.31	12.0	35.0	248
No. 10	6.51	4.36	12.2	35.3	257
No. 11	6.67	4.32	11.8	35.0	261
Range Value	0.25	0.09	0.4	0.6	26
Max Range	0.55	0.13	0.2	1.0	26
Mean Value	6.623	4.306	12.06	34.92	249.3
Delta Percent (%)	7.17	1.63	0.50	1.12	1.12
Acceptable Limit (%)	2.27	1.25	0.78	2.64	4.16
Service Limit (%)	14.00	4.00	5.00	5.00	10.00
Current Rate (%)	95.0	99.0	102.9	101.9	99.3
New Rate (%)	95.0	100.6	102.9	99.2	98.2



Adapter:

Pos.: 06/03/2022

Doctor:

Sex:

Nickname: XN-L

Sample No: CAL-CAL-02

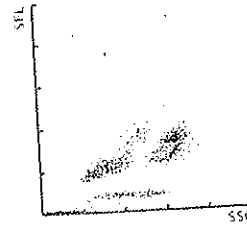
Transasia Bio-Medicals Ltd., Transasia House, Chandivali Studio Road, Andheri (E), Mumbai-400 072  
 Tel: +91 22 4030 9000 Fax: +91 22 2857 3030

Ward:

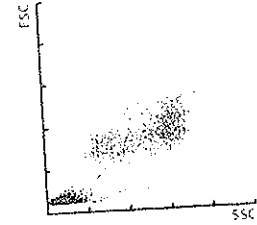
Sample Comment:

WBC	6.58	[10 <sup>3</sup> /uL]		
RBC	4.28	[10 <sup>6</sup> /uL]		
HGB	12.1	[g/dL]		
HCT	34.7	[%]		
MCV	81.1	[fL]		
MCH	28.3	[pg]		
MCHC	34.9	[g/dL]		
PLT	235	[10 <sup>3</sup> /uL]		
RDW-SD	48.2	[fL]		
RDW-CV	16.2	[%]		
PDW	9.2	[fL]		
MPV	9.6	[fL]		
P-LCR	19.3	[%]		
PCT	0.23	[%]		
NEUT	2.72	[10 <sup>3</sup> /uL]	41.4	[%]
LYMPH	2.17	[10 <sup>3</sup> /uL]	33.0	[%]
MONO	0.56	[10 <sup>3</sup> /uL]	8.5	[%]
EO	0.72	[10 <sup>3</sup> /uL]	10.9	[%]
BASO	0.41	[10 <sup>3</sup> /uL]	6.2	[%]
IG	0.73	[10 <sup>3</sup> /uL]	11.1	[%]

WDF



WDF-CBC



RBC



PLT



WBC IP Message

RBC IP Message

PLT IP Message

Adapter:

Pos.: 06/08/22 17:55:06 HP

Doctor:

**TRANSASIA**

Sample No : CAL-CAL-03

Ward:

Birth:

Sex:

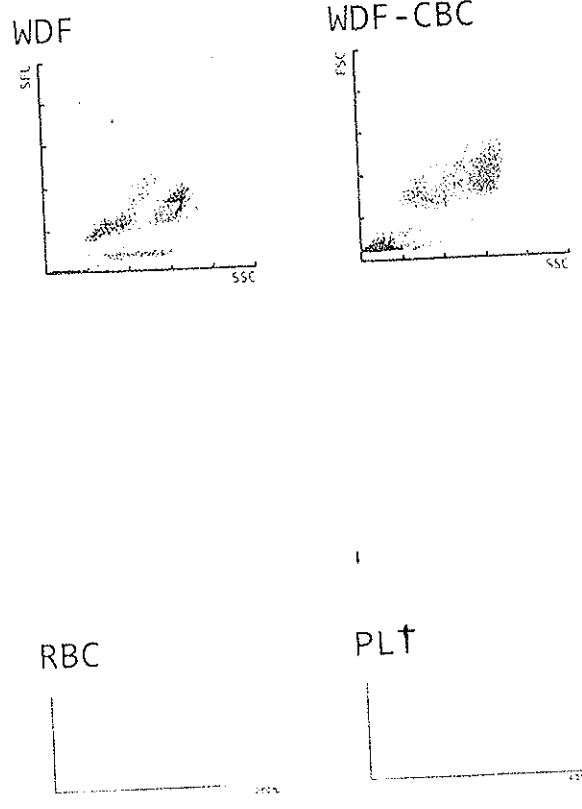
Transasia Bio-Medicals Ltd., Transasia House, 8 Chandivali Studio Road, Andheri (E), Mumbai- 400 072

Name: 22 4030 9000 Fax: +91 22 2857 3030

Nickname: XN-L

Sample Comment:

WBC	6.54	[10 <sup>3</sup> /uL]		
RBC	4.29	[10 <sup>6</sup> /uL]		
HGB	12.1	[g/dL]		
HCT	34.8	[%]		
MCV	81.1	[fL]		
MCH	28.2	[pg]		
MCHC	34.8	[g/dL]		
PLT	242	[10 <sup>3</sup> /uL]		
RDW-SD	48.2	[fL]		
RDW-CV	16.3	[%]		
PDW	9.3	[fL]		
MPV	9.7	[fL]		
P-LCR	19.6	[%]		
PCT	0.23	[%]		
NEUT	2.76	[10 <sup>3</sup> /uL]	42.2	[%]
LYMPH	2.15	[10 <sup>3</sup> /uL]	32.9	[%]
MONO	0.55	[10 <sup>3</sup> /uL]	8.4	[%]
EO	0.67	[10 <sup>3</sup> /uL]	10.2	[%]
BASO	0.41	[10 <sup>3</sup> /uL]	6.3	[%]
IG	0.73	[10 <sup>3</sup> /uL]	11.2	[%]



WBC IP Message

RBC IP Message

PLT IP Message

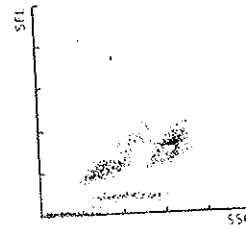


Sample No.: CAL-CAL-04  
 Patient: Do-Medicals Ltd., Transasia House, 8 Chandivali Studio Road, Andheri (E) Mumbai-400 072  
 Tel: 22 4030 9000 Fax: +91 22 2857 3030  
 Sample Comment:

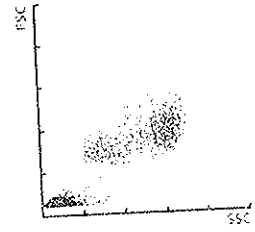
Adapter: Pos.: 06/05/22  
 Doctor: Sex:  
 Ward: Birth: 400 072  
 Nickname: XN-L

WBC	6.66	[10 <sup>3</sup> /uL]		
RBC	4.32	[10 <sup>6</sup> /uL]		
HGB	12.1	[g/dL]		
HCT	35.1	[%]		
MCV	81.3	[fL]		
MCH	28.0	[pg]		
MCHC	34.5	[g/dL]		
PLT	242	[10 <sup>3</sup> /uL]		
RDW-SD	48.2	[fL]		
RDW-CV	16.3	[%]		
PDW	9.5	[fL]		
MPV	9.5	[fL]		
P-LCR	18.3	[%]		
PCT	0.23	[%]		
NEUT	2.82	[10 <sup>3</sup> /uL]	42.2	[%]
LYMPH	2.23	[10 <sup>3</sup> /uL]	33.5	[%]
MONO	0.49	[10 <sup>3</sup> /uL]	7.4	[%]
EO	0.69	[10 <sup>3</sup> /uL]	10.4	[%]
BASO	0.43	[10 <sup>3</sup> /uL]	6.5	[%]
IG	0.77	[10 <sup>3</sup> /uL]	11.6	[%]

WDF



WDF-CBC



RBC



PLT



WBC IP Message

RBC IP Message

PLT IP Message

**TRANSASIA**

Sample No: CAL-CAL-05

Adapter:

Pos.:

Doctor:

Ward:

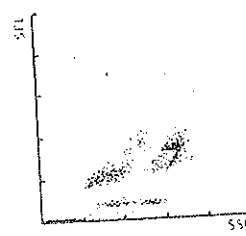
Birth:

Sex:

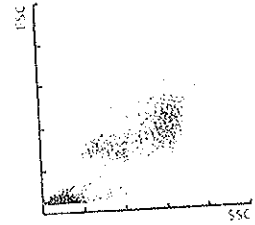
Patient ID: Transasia Bio-Medicals Ltd., Transasia House, 8 Chandivali Studio Road, Andheri (E), Mumbai- 400 072  
 Name: 22 4030 9000 Fax: +91 22 2857 3030  
 Sample Comment:

WBC	6.69	[10 <sup>3</sup> /uL]		
RBC	4.33	[10 <sup>6</sup> /uL]		
HGB	12.2	[g/dL]		
HCT	35.1	[%]		
MCV	81.1	[fL]		
MCH	28.2	[pg]		
MCHC	34.8	[g/dL]		
PLT	252	[10 <sup>3</sup> /uL]		
RDW-SD	48.0	[fL]		
RDW-CV	16.3	[%]		
PDW	9.2	[fL]		
MPV	9.7	[fL]		
P-LCR	19.2	[%]		
PCT	0.24	[%]		
NEUT	2.83	[10 <sup>3</sup> /uL]	42.3	[%]
LYMPH	2.18	[10 <sup>3</sup> /uL]	32.6	[%]
MONO	0.55	[10 <sup>3</sup> /uL]	8.2	[%]
EO	0.72	[10 <sup>3</sup> /uL]	10.8	[%]
BASO	0.41	[10 <sup>3</sup> /uL]	6.1	[%]
IG	0.73	[10 <sup>3</sup> /uL]	10.9	[%]

WDF



WDF - CBC



RBC



PLT



WBC IP Message

RBC IP Message

PLT IP Message



# TRANSASIA

Adapter:

Pos.: 06/08/21

Doctor:

Sample No.: CAL-CAL-06

Patient ID: Do-Medicals Ltd., Transasia House, 8 Chandivali Studio Road, Andheri (B), Mumbai- 400 072

Sex:

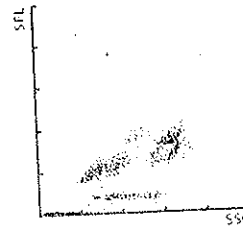
Name: +91 22 4030 9000 Fax: +91 22 2857 3030

Nickname: XN-L

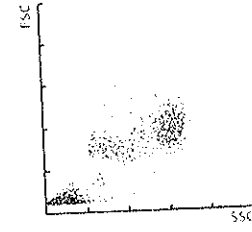
Sample Comment:

WBC	6.76	[10 <sup>3</sup> /uL]		
RBC	4.29	[10 <sup>6</sup> /uL]		
HGB	12.0	[g/dL]		
HCT	34.7	[%]		
MCV	80.9	[fL]		
MCH	28.0	[pg]		
MCHC	34.6	[g/dL]		
PLT	252	[10 <sup>3</sup> /uL]		
RDW-SD	47.7	[fL]		
RDW-CV	16.1	[%]		
PDW	9.0	[fL]		
MPV	9.6	[fL]		
P-LCR	18.6	[%]		
PCT	0.24	[%]		
NEUT	2.90	[10 <sup>3</sup> /uL]	42.8	[%]
LYMPH	2.29	[10 <sup>3</sup> /uL]	33.9	[%]
MONO	0.54	[10 <sup>3</sup> /uL]	8.0	[%]
EO	0.66	[10 <sup>3</sup> /uL]	9.8	[%]
BASO	0.37	[10 <sup>3</sup> /uL]	5.5	[%]
IG	0.81	[10 <sup>3</sup> /uL]	12.0	[%]

WDF



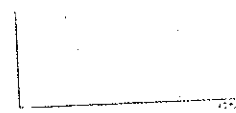
WDF - CBC



RBC



PLT



WBC IP Message

RBC IP Message

PLT IP Message



# TRANSASIA

Sample No.: CAL-CAL-07

Adapter:

Pos.:

06 0 20 1 10 0 8

Patient ID: Transasia House, 8 Chandivali Studio Road, Andheri (E), Mumbai - 400 072

Ward:

Doctor:

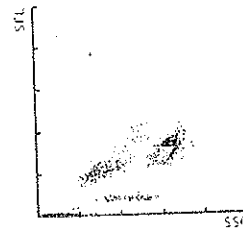
Sex:

Name: 2 4030 9000 Fax: +91 22 2857 3030

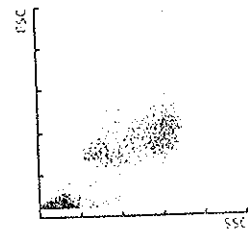
Nickname: XN-L

Sample Comment:

WDF



WDF-CBC



WBC	6.64	[10 <sup>3</sup> /uL]		
RBC	4.29	[10 <sup>6</sup> /uL]		
HGB	12.0	[g/dL]		
HCT	34.8	[%]		
MCV	81.1	[fL]		
MCH	28.0	[pg]		
MCHC	34.5	[g/dL]		
PLT	259	[10 <sup>3</sup> /uL]		
RDW-SD	48.0	[fL]		
RDW-CV	16.3	[%]		
PDW	9.4	[fL]		
MPV	10.0	[fL]		
P-LCR	20.6	[%]		
PCT	0.26	[%]		
NEUT	2.83	[10 <sup>3</sup> /uL]	42.6	[%]
LYMPH	2.19	[10 <sup>3</sup> /uL]	33.0	[%]
MONO	0.57	[10 <sup>3</sup> /uL]	8.6	[%]
EO	0.63	[10 <sup>3</sup> /uL]	9.5	[%]
BASO	0.42	[10 <sup>3</sup> /uL]	6.3	[%]
IG	0.76	[10 <sup>3</sup> /uL]	11.4	[%]

RBC



PLT



WBC IP Message

RBC IP Message

PLT IP Message

Adapter: Pos.: 06/08/22

Sample No.: CAL CAL-08

Transasia Diagnostics Pvt. Ltd., Transasia House, 8 Chandivali Studio Road, Andheri (E), Mumbai - 400 072

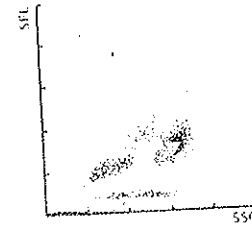
Name: Tel: +91 22 4030 9000 Fax: +91 22 2857 3030

Doctor: Sex: XN-L  
Nickname: XN-L

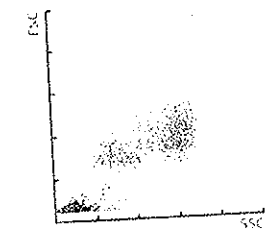
Sample Comment:

WBC	6.59	[10 <sup>3</sup> /uL]		
RBC	4.27	[10 <sup>6</sup> /uL]		
HGB	12.1	[g/dL]		
HCT	34.7	[%]		
MCV	81.3	[fL]		
MCH	28.3	[pg]		
MCHC	34.9	[g/dL]		
PLT	245	[10 <sup>3</sup> /uL]		
RDW-SD	48.2	[fL]		
RDW-CV	16.3	[%]		
PDW	9.3	[fL]		
MPV	9.5	[fL]		
P-LCR	18.4	[%]		
PCT	0.23	[%]		
NEUT	2.77	[10 <sup>3</sup> /uL]	42.1	[%]
LYMPH	2.15	[10 <sup>3</sup> /uL]	32.6	[%]
MONO	0.58	[10 <sup>3</sup> /uL]	8.8	[%]
EO	0.72	[10 <sup>3</sup> /uL]	10.9	[%]
BASO	0.37	[10 <sup>3</sup> /uL]	5.6	[%]
IG	0.70	[10 <sup>3</sup> /uL]	10.6	[%]

WDF



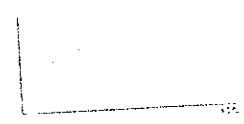
WDF-CBC



RBC



PLT



WBC IP Message

RBC IP Message

PLT IP Message

Sample No.: CAL-CAL-09

Adapter:

Pos.: 06/18

**TRANSASIA**

Patient ID:

Ward:

Doctor:

Name: Transasia Bio-Medicals Ltd., Transasia House, 8 Chandivali Studio Road, Andheri (E), Mumbai- 400 072

Birth:

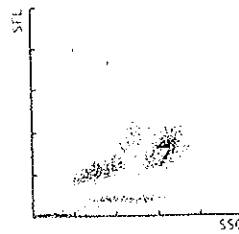
Sex:

tel: +91 22 4030 9900 fax: +91 22 2857 3030

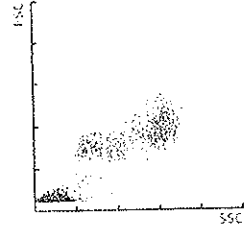
Nickname: XN-L

WBC	6.59	[10 <sup>3</sup> /uL]		
RBC	4.31	[10 <sup>6</sup> /uL]		
HGB	12.0	[g/dL]		
HCT	35.0	[%]		
MCV	81.2	[fL]		
MCH	27.8	[pg]		
MCHC	34.3	[g/dL]		
PLT	248	[10 <sup>3</sup> /uL]		
RDW-SD	48.1	[fL]		
RDW-CV	16.3	[%]		
PDW	9.4	[fL]		
MPV	9.4	[fL]		
P-LCR	17.3	[%]		
PCT	0.23	[%]		
NEUT	2.66	[10 <sup>3</sup> /uL]	40.4	[%]
LYMPH	2.27	[10 <sup>3</sup> /uL]	34.4	[%]
MONO	0.54	[10 <sup>3</sup> /uL]	8.2	[%]
EO	0.76	[10 <sup>3</sup> /uL]	11.5	[%]
BASO	0.36	[10 <sup>3</sup> /uL]	5.5	[%]
IG	0.69	[10 <sup>3</sup> /uL]	10.5	[%]

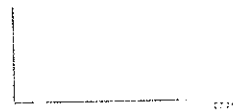
WDF



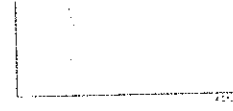
WDF-CBC



RBC



PLT



WBC IP Message

RBC IP Message

PLT IP Message

Adapter:

Pos.: 06/18

Doctor:

Sample No.: CAL-CAL-10

Transasia Di-Medicals Ltd., Transasia House, Chandivali Studio Road, Andheri (E) Mumbai- 400 072

Phone: 22 4030 9000 Fax: +91 22 2857 3030

Sample Comment:

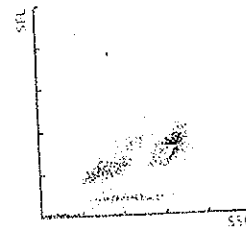
Ward:

Sex:

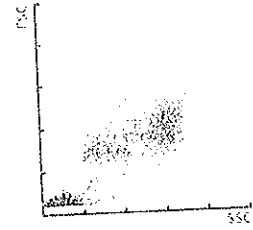
Nickname: XN-L

WBC	6.67	[10 <sup>3</sup> /uL]		
RBC	4.29	[10 <sup>6</sup> /uL]		
HGB	11.7	[g/dL]		
HCT	34.8	[%]		
MCV	81.1	[fL]		
MCH	27.3	[pg]		
MCHC	33.6	[g/dL]		
PLT	253	[10 <sup>3</sup> /uL]		
RDW-SD	48.2	[fL]		
RDW-CV	16.4	[%]		
PDW	8.6	[fL]		
MPV	9.4	[fL]		
P-LCR	16.3	[%]		
PCT	0.24	[%]		
NEUT	2.78	[10 <sup>3</sup> /uL]	41.8	[%]
LYMPH	2.31	[10 <sup>3</sup> /uL]	34.6	[%]
MONO	0.51	[10 <sup>3</sup> /uL]	7.6	[%]
EO	0.69	[10 <sup>3</sup> /uL]	10.3	[%]
BASO	0.38	[10 <sup>3</sup> /uL]	5.7	[%]
IG	0.74	[10 <sup>3</sup> /uL]	11.1	[%]

WDF



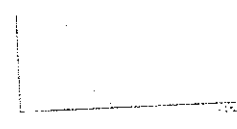
WDF-CBC



RBC



PLT



WBC IP Message

RBC IP Message

PLT IP Message

Precision Check Log

Instrument Nickname: XN-L

Execution Date: 06/08/2021 16:38:36

Logon Name: sysmex

	WBC	RBC	HGB	HCT	PLT
No. 2	5.78	4.91	14.9	44.0	213
No. 3	5.80	4.92	14.8	44.0	223
No. 4	5.80	4.94	14.9	44.1	214
No. 5	5.93	4.91	14.9	43.8	212
No. 6	5.74	4.95	14.8	43.9	218
No. 7	6.02	4.90	14.8	43.5	219
No. 8	5.78	5.01	15.1	44.3	219
No. 9	5.57	4.93	15.0	43.6	221
No. 10	5.95	4.93	15.0	43.5	222
No. 11	5.79	4.95	15.0	43.6	225
Mean Value	5.816	4.935	14.92	43.83	218.6
SD	0.126	0.031	0.10	0.28	4.4
CV (%)	2.2	0.6	0.7	0.6	2.0
Limit (%)	3.0	1.5	1.0	1.5	4.0

