



Date: 13/08/2021

## Calibration Certificate

Customer Name : Harley PathLabs Pvt Ltd

Address of Customer: Noida

Model : H560

Serial No. : K11042118011

Calibration Done Date : 13/08/2021

Calibration Due Date : On or Before 12/08/2022

*This is to certify that we have calibrated the Hematology Analyzer Model: H560 bearing Sr. No. K11042118011 and on inspection of the instrument it is observed that the results are well within the range and instrument is working fine*

Thanking you,

For

Transasia Bio-Medicals Ltd.

Lavkush Lal

Application Specialist



[www.transasia.co.in](http://www.transasia.co.in)



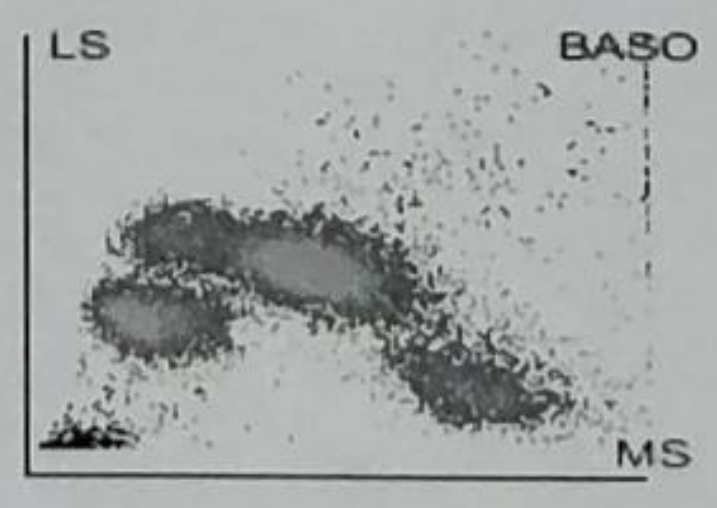
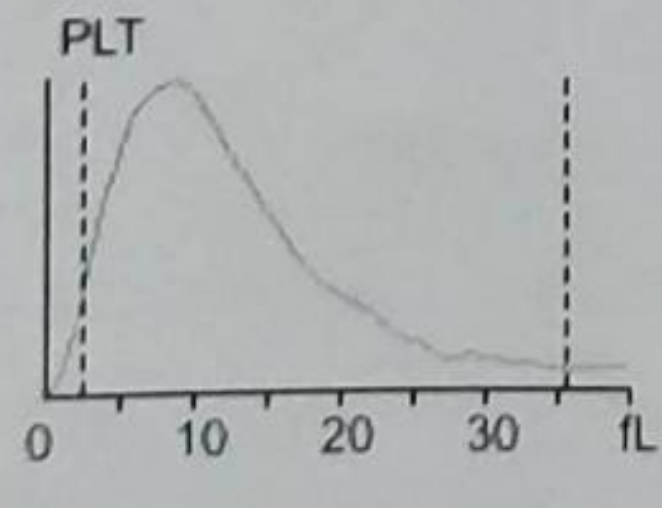
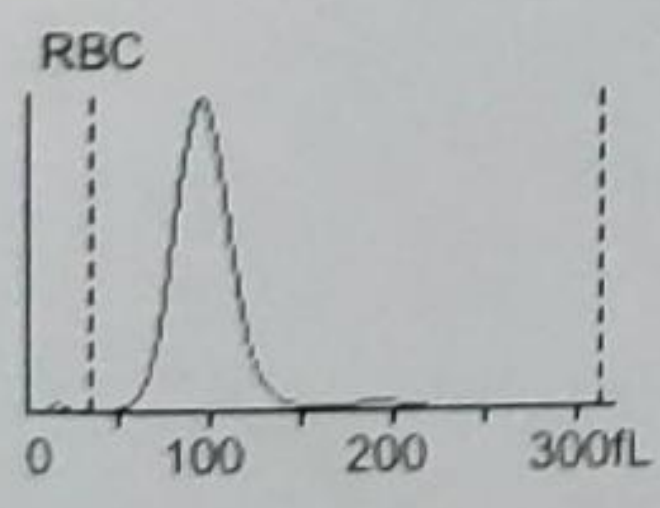
HO: Transasia Bio-Medicals Ltd., Transasia House, Chandivali Studio road, Andheri (E), MUMBAI 40072



## L-J QC Analysis

File No.:	5	Lot No.:	EH2207	Level:	High
Operator:	lab	Exp. Date:	2022/09/10	Run Time:	2022-08-04 12:10
Print Time:	2022-08-04 14:33	QC Mode:	Whole Blood-CBC+DIFF	QC Sample ID:	HEM00026

Parameter	Result	Ref. Range	Unit
1 WBC	19.28	15.92-20.92	10 <sup>3</sup> /uL
2 Neu%	63.0	56.3-70.3	%
3 Lym%	19.9	12.0-24.0	%
4 Mon%	6.4	1.8-13.8	%
5 Eos%	10.7	3.9-17.9	%
6 Bas%	1.1	0.0-3.0	%
7 Neu#	12.15	10.26-13.06	10 <sup>3</sup> /uL
8 Lym#	3.84	2.21-4.41	10 <sup>3</sup> /uL
9 Mon#	1.23	0.34-2.54	10 <sup>3</sup> /uL
10 Eos#	2.06	0.71-3.31	10 <sup>3</sup> /uL
11 Bas#	0.22	0.00-0.56	10 <sup>3</sup> /uL
12 RBC	5.30	4.84-5.84	10 <sup>6</sup> /uL
13 HGB	17.0	16.2-17.8	g/dL
14 HCT	51.9	46.4-54.4	%
15 MCV	97.9	88.4-100.4	fL
16 MCH	32.1	29.2-34.2	pg
17 MCHC	32.7	31.0-37.0	g/dL
18 RDW-CV	12.8	11.9-17.9	%
19 RDW-SD	51.8	45.0-69.0	fL
20 PLT	449	408-528	10 <sup>3</sup> /uL
21 MPV	9.3	7.0-13.0	fL
22 PDW-SD	12.1	10.8-16.8	fL
23 PDW-CV	16.6	13.7-19.7	%
24 PCT	0.416	0.268-0.668	%
25 P-LCR	31.1	29.4-45.4	%
26 P-LCC	140	140-210	10 <sup>3</sup> /uL





# L-J QC Analysis

File No.:	5	Lot No.:	EH2207	Level:	High
Operator:	lab	Exp. Date:	2022/09/10	Run Time:	2022-08-03 10:11
Print Time:	2022-08-04 14:36	QC Mode:	Whole Blood-CBC+DIFF	QC Sample ID:	HEM00026

Parameter	Result	Ref. Range	Unit
1 WBC	18.97	15.92-20.92	10 <sup>3</sup> /uL
2 Neu%	63.3	56.3-70.3	%
3 Lym%	19.3	12.0-24.0	%
4 Mon%	6.8	1.8-13.8	%
5 Eos%	10.6	3.9-17.9	%
6 Bas%	1.2	0.0-3.0	%
7 Neu#	12.01	10.26-13.06	10 <sup>3</sup> /uL
8 Lym#	3.66	2.21-4.41	10 <sup>3</sup> /uL
9 Mon#	1.29	0.34-2.54	10 <sup>3</sup> /uL
10 Eos#	2.01	0.71-3.31	10 <sup>3</sup> /uL
11 Bas#	0.23	0.00-0.56	10 <sup>3</sup> /uL
12 RBC	5.32	4.84-5.84	10 <sup>6</sup> /uL
13 HGB	16.7	16.2-17.8	g/dL
14 HCT	51.3	46.4-54.4	%
15 MCV	96.5	88.4-100.4	fL
16 MCH	31.3	29.2-34.2	pg
17 MCHC	32.5	31.0-37.0	g/dL
18 RDW-CV	12.9	11.9-17.9	%
19 RDW-SD	50.9	45.0-69.0	fL
20 PLT	469	408-528	10 <sup>3</sup> /uL
21 MPV	9.2	7.0-13.0	fL
22 PDW-SD	12.2	10.8-16.8	fL
23 PDW-CV	16.7	13.7-19.7	%
24 PCT	0.432	0.268-0.668	%
25 P-LCR	31.1	29.4-45.4	%
26 P-LCC	146	140-210	10 <sup>3</sup> /uL

