

**TRANSASIA<sup>®</sup>**  
**CALIBRATION CERTIFICATE**

Customer Name- Redcliffe Lifetech Private Limited

Instrument Name- Erba Hematology Elite580

Instrument Sr.no.- K11052123040

Installation date – 05/9/2021

Due Date of Calibration- 04/9/2022

We here certify that this instrument is factory calibrated as per recommended protocols by the principal manufacturer Erba-Transasia. Next onsite calibration will due after 1yr of installation.

For Transasia bio medicals ltd  
Saurabh Tripathi  
Senior ASM.

**TRANSASIA BIO-MEDICALS LTD.**

[www.transasia.co.in](http://www.transasia.co.in)



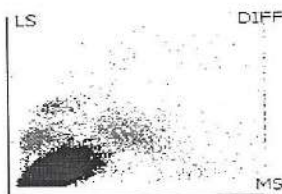
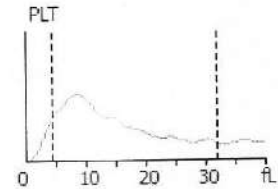
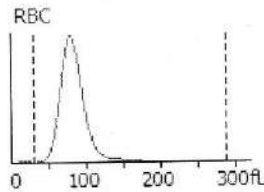
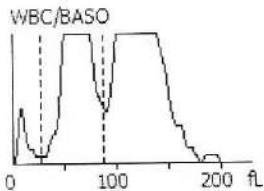
**TRANSASIA BIO-MEDICALS LTD.**

TRANSASIA HOUSE, 8 CHANDIVALI STUDIO ROAD, MUMBAI-400 072 TEL : 4030 9000 FAX : (022) 4030 9090 / 2857 3030 Email:transasia@transasia.co.in  
DELHI (011) 25732223 CHENNAI (044) 28227149 KOLKATA (033) 22157839 BANGALORE (080) 25568044 AHMEDABAD (079) 26407050

## L-J QC Analysis

File No.:	13	Lot No.:	EH2207	Level:	Low
Operator:	admin	Exp. Date:	2022/09/10	Run Time:	2022/08/08 09:59
Print Time:	2022/08/08 10:00	QC Mode:	Whole Blood-CBC+DIFF	QC Sample ID:	

Parameter	Result	Ref. Range	Unit
<b>1 WBC</b>	<b>3.38</b>	<b>2.72-3.72</b>	<b>10<sup>3</sup>/uL</b>
2 Neu%	55.7	41.7-59.7	%
3 Lym%	34.4	27.9-45.9	%
4 Mon%	7.7	3.4-11.4	%
5 Eos%	2.2	0.0-10.0	%
6 Bas%	61.1	54.1-70.1	%
7 Neu#	1.89	1.23-2.03	10 <sup>3</sup> /uL
8 Lym#	1.16	0.79-1.59	10 <sup>3</sup> /uL
9 Mon#	0.26	0.10-0.38	10 <sup>3</sup> /uL
10 Eos#	0.07	0.01-0.31	10 <sup>3</sup> /uL
11 Bas#	2.06	1.70-2.30	10 <sup>3</sup> /uL
<b>12 RBC</b>	<b>2.21</b>	<b>2.08-2.44</b>	<b>10<sup>6</sup>/uL</b>
13 HGB	5.7	5.2-6.0	g/dL
14 HCT	18.2	15.5-19.5	%
15 MCV	82.2	72.4-82.4	fL
16 MCH	25.7	22.0-27.0	pg
17 MCHC	31.3	28.5-34.5	g/dL
18 RDW-CV	18.5	15.4-21.4	%
19 RDW-SD	55.5	41.6-61.6	fL
<b>20 PLT</b>	<b>67</b>	<b>41-81</b>	<b>10<sup>3</sup>/uL</b>
21 MPV	11.4	7.5-13.5	fL
22 PDW-SD	13.3	9.6-15.6	fL
23 PDW-CV	15.6	11.7-17.7	%
24 PCT	0.077	0.015-0.115	%
25 P-LCR	35.6	20.9-36.9	%
26 P-LCC	24	3-33	10 <sup>9</sup> /L

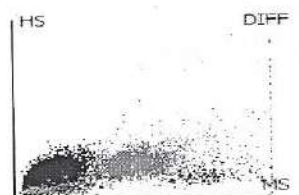
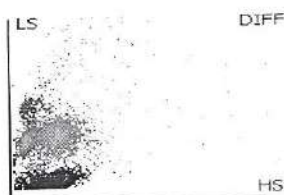
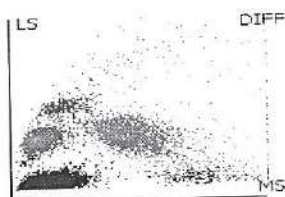
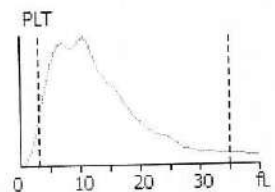
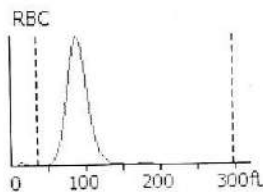
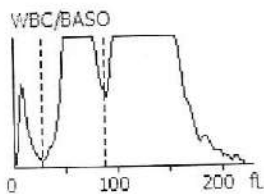


*DeWay*  
8/8/2022

## L-J QC Analysis

File No.:	14	Lot No.:	EH2207	Level:	Normal
Operator:	admin	Exp. Date:	2022/09/10	Run Time:	2022/08/08 09:53
Print Time:	2022/08/08 09:54	QC Mode:	Whole Blood-CBC+DIFF	QC Sample ID:	

Parameter	Result	Ref. Range	Unit
<b>1 WBC</b>	<b>8.18</b>	<b>6.73-8.73</b>	<b>10<sup>3</sup>/uL</b>
2 Neu%	55.4	47.8-63.8	%
3 Lym%	31.5	21.8-37.8	%
4 Mon%	7.1	1.9-11.9	%
5 Eos%	6.0	1.5-13.5	%
6 Bas%	70.2	63.0-79.0	%
7 Neu#	4.54	3.61-5.01	10 <sup>3</sup> /uL
8 Lym#	2.57	1.60-3.00	10 <sup>3</sup> /uL
9 Mon#	0.58	0.03-1.03	10 <sup>3</sup> /uL
10 Eos#	0.49	0.08-1.08	10 <sup>3</sup> /uL
11 Bas#	5.74	4.79-6.19	10 <sup>3</sup> /uL
<b>12 RBC</b>	<b>4.34</b>	<b>4.25-4.73</b>	<b>10<sup>6</sup>/uL</b>
13 HGB	12.8	12.3-13.5	g/dL
14 HCT	38.7	35.3-41.3	%
15 MCV	89.2	80.4-90.4	fL
16 MCH	29.5	25.8-30.8	pg
17 MCHC	33.1	30.1-36.1	g/dL
18 RDW-CV	15.5	14.5-20.5	%
19 RDW-SD	50.8	43.3-63.3	fL
<b>20 PLT</b>	<b>257</b>	<b>200-280</b>	<b>10<sup>3</sup>/uL</b>
21 MPV	10.3	7.1-13.1	fL
22 PDW-SD	12.4	9.5-15.5	fL
23 PDW-CV	16.0	13.0-19.0	%
24 PCT	0.266	0.144-0.344	%
25 P-LCR	29.2	19.5-35.5	%
26 P-LCC	75	42-92	10 <sup>9</sup> /L

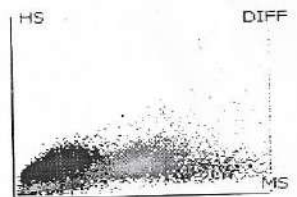
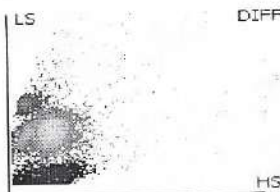
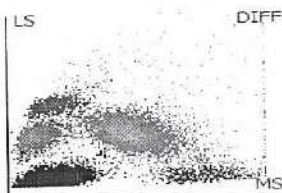
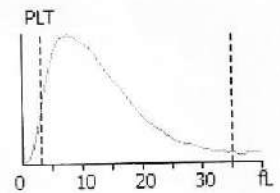
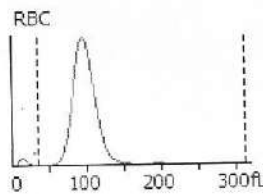
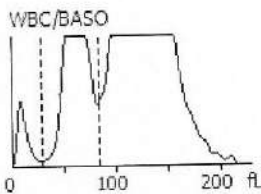


*Handwritten signature*  
8/8/22

## L-J QC Analysis

File No.:	15	Lot No.:	EH2207	Level:	High
Operator:	admin	Exp. Date:	2022/09/10	Run Time:	2022/08/08 09:51
Print Time:	2022/08/08 09:53	QC Mode:	Whole Blood-CBC+DIFF	QC Sample ID:	

Parameter	Result	Ref. Range	Unit
<b>1 WBC</b>	<b>18.56</b>	<b>15.16-20.16</b>	<b>10<sup>3</sup>/uL</b>
2 Neu%	64.6	56.0-70.0	%
3 Lym%	20.5	14.5-26.5	%
4 Mon%	9.3	2.0-14.0	%
5 Eos%	5.6	1.5-15.5	%
6 Bas%	80.7	72.9-88.9	%
7 Neu#	11.99	9.73-12.53	10 <sup>3</sup> /uL
8 Lym#	3.81	2.52-4.72	10 <sup>3</sup> /uL
9 Mon#	1.73	0.31-2.51	10 <sup>3</sup> /uL
10 Eos#	1.03	0.20-2.80	10 <sup>3</sup> /uL
11 Bas#	14.98	12.79-15.79	10 <sup>3</sup> /uL
<b>12 RBC</b>	<b>5.23</b>	<b>4.85-5.85</b>	<b>10<sup>6</sup>/uL</b>
13 HGB	16.8	15.9-17.5	g/dL
14 HCT	50.8	45.4-53.4	%
15 MCV	97.0	86.3-98.3	fL
16 MCH	32.1	28.2-33.2	pg
17 MCHC	33.1	30.1-36.1	g/dL
18 RDW-CV	14.7	14.0-20.0	%
19 RDW-SD	52.3	44.2-68.2	fL
<b>20 PLT</b>	<b>503</b>	<b>427-547</b>	<b>10<sup>3</sup>/uL</b>
21 MPV	10.2	7.1-13.1	fL
22 PDW-SD	13.0	9.5-15.5	fL
23 PDW-CV	16.6	13.0-19.0	%
24 PCT	0.514	0.297-0.697	%
25 P-LCR	29.0	19.7-35.7	%
26 P-LCC	146	101-171	10 <sup>9</sup> /L



*Handwritten signature*  
8/8/2022