

## Certificate of Calibration

Customer Name: REDCLIFF LIFE TECH PVT. LTD REWA MP

Model : Automated Hematology Analyzer H560

Serial No. : K1104B2146063

Calibration Done Date: 30/04/2022

Next Calibration Due Date On or Before: 29/04/2023

Lab In-charge: . Dr. SAKSHI CHAURASIA

*This is to certify that the above-mentioned product has been verified of calibration for CBC 5 parameters (WBC, RBC, HGB, MCV and PLT) according to the standard procedures provided by Erba Lachema s.r.o, Karasek.*

Calibration at site performed by  
Name- ABHISHEK CHOUDHARY  
Designation- Sr SERVICE ENGG.  
Transasia Bio-Medicals Ltd  
Location REWA M.P.

Encl:

1. Certificate of Inspection
2. Assay Sheet of Hematology Calibrator (H Cal)
3. Printouts
4. Traceability Document

Date: 05/05/2022

## Certificate of Inspection

1. Model: Automated Hematology Analyzer H560
2. Serial No.: K1104B2146063
3. Calibration Date: 30/04/2022
4. Material used: H Cal (Lot No. PLUS0422, Expiry date: 10-May-2022)

By comparing your data to the results of the standard counters in Erba Lachema, the calibration for CBC 5 parameters using the measurement standard material (H Cal) was completed. The calibration result of 5 runs is summarized in the following table. Please refer to the attached sheets for the details.

Technical Service Department  
Transasia Bio-Medicals Ltd

## 5. BACKGROUND CHECK

PARAMETER	RESULT	Range
WBC	0.0	$0.3 \times 10^3/\text{UI}$ or Less
RBC	0.00	$0.02 \times 10^6/\text{uL}$ or Less
HGB	0.0	0.1 g/dL or Less
PLT	0	$10 \times 10^3/\text{uL}$ or Less

Technical Service Department  
Transasia Bio-Medicals Ltd



## 6. PRECISION STUDY PERFORMED ON THE ANALYSER USING A BLOOD SAMPLE (ORIGINALS ATTACHED)

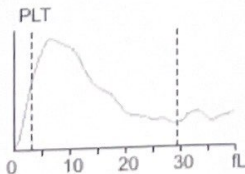
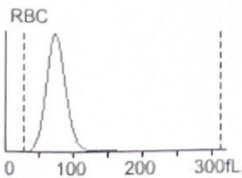
SMP NO	WBC	RBC	HGB	MCV	PLT
1	9.59	5.89	14.5	89.8	278
2	9.58	5.69	14.2	89.8	277
3	9.48	5.76	14.4	89.9	269
4	9.53	5.69	14.2	89.9	268
5	9.86	5.84	14.5	89.9	264
6	9.87	5.8	14.4	89.8	261
7	9.78	5.67	13.9	90	273
8	9.78	5.72	14.1	89.9	269
9	9.82	5.73	14.1	90.1	263
10	10.06	5.77	14.1	89.9	268
Mean	9.74	5.76	14.24	89.90	269.00
SD	0.18	0.07	0.20	0.09	5.66
CV%	1.88	1.23	1.41	0.10	2.10
Acceptable CV%	Within 3.5%	Within 2.0%	Within 1.5%	Within 2.0%	Within 6.0%
Result	PASS	PASS	PASS	PASS	PASS

Technical Service Department  
Transasia Bio Medicals Ltd

## L-J QC Analysis

File No.: 12                      Lot No.: EH2211L                      Level: Low  
 Operator: admin                      Exp. Date: 2023/01/10                      Run Time: 2022/11/30 11:55  
 Print Time: 2022/11/30 13:50                      QC Mode: Whole Blood-CBC+DIFF                      QC Sample ID:

Parameter	Result	Ref. Range	Unit
1 WBC	3.47	2.98-3.98	10 <sup>3</sup> /uL
2 Neu%	53.0	44.0-62.0	%
3 Lym%	38.0	28.4-46.4	%
4 Mon%	3.7	0.5-8.5	%
5 Eos%	5.3	0.1-10.1	%
6 Bas%	5.8	0.0-12.0	%
7 Neu#	1.84	1.45-2.25	10 <sup>3</sup> /uL
8 Lym#	1.32	0.90-1.70	10 <sup>3</sup> /uL
9 Mon#	0.13	0.02-0.30	10 <sup>3</sup> /uL
10 Eos#	0.18	0.03-0.33	10 <sup>3</sup> /uL
11 Bas#	0.20	0.00-0.42	10 <sup>3</sup> /uL
12 RBC	2.38	2.26-2.62	10 <sup>6</sup> /uL
13 HGB	6.0	5.7-6.5	g/dL
14 HCT	18.5	16.5-20.5	%
15 MCV	77.7	70.9-80.9	fL
16 MCH	25.3	22.3-27.3	pg
17 MCHC	32.5	29.8-35.8	g/dL
18 RDW-CV	14.8	13.0-19.0	%
19 RDW-SD	48.0	38.4-58.4	fL
20 PLT	72	40-80	10 <sup>3</sup> /uL
21 MPV	9.3	6.0-12.0	fL
22 PDW-SD	12.6	10.9-16.9	fL
23 PDW-CV	16.8	14.0-20.0	%
24 PCT	0.066	0.004-0.104	%
25 P-LCR	31.6	23.9-39.9	%
26 P-LCC	23	4-34	10 <sup>3</sup> /uL



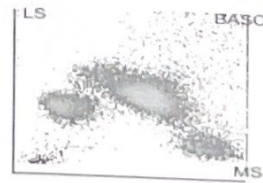
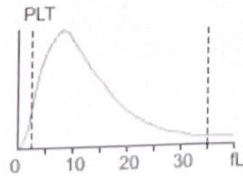
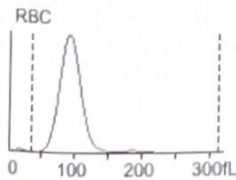
1  
A Hatac



## L-J QC Analysis

File No.: 13                      Lot No.: EH2211H                      Level: High  
 Operator: admin                      Exp. Date: 2023/01/10                      Run Time: 2022/11/30 12:01  
 Print Time: 2022/11/30 13:50                      QC Mode: Whole Blood-CBC+DIFF                      QC Sample ID:

Parameter	Result	Ref. Range	Unit
1 WBC	18.29	16.26-21.26	10 <sup>3</sup> /uL
2 Neu%	66.0	58.7-72.7	%
3 Lym%	18.8	12.9-24.9	%
4 Mon%	4.9	0.0-9.8	%
5 Eos%	10.3	3.5-17.5	%
6 Bas%	2.7	0.0-5.0	%
7 Neu#	12.07	10.92-13.72	10 <sup>3</sup> /uL
8 Lym#	3.44	2.44-4.64	10 <sup>3</sup> /uL
9 Mon#	0.90	0.00-1.84	10 <sup>3</sup> /uL
10 Eos#	1.88	0.67-3.27	10 <sup>3</sup> /uL
11 Bas#	0.49	0.00-0.94	10 <sup>3</sup> /uL
12 RBC	5.19	4.74-5.74	10 <sup>6</sup> /uL
13 HGB	16.9	16.2-17.8	g/dL
14 HCT	50.8	46.7-54.7	%
15 MCV	97.9	90.7-102.7	fL
16 MCH	32.6	30.0-35.0	pg
17 MCHC	33.3	30.6-36.6	g/dL
18 RDW-CV	13.3	11.9-17.9	%
19 RDW-SD	53.6	44.5-68.5	fL
20 PLT	450	408-528	10 <sup>3</sup> /uL
21 MPV	9.4	6.8-12.8	fL
22 PDW-SD	12.2	10.8-16.8	fL
23 PDW-CV	16.7	14.2-20.2	%
24 PCT	0.422	0.258-0.658	%
25 P-LCR	31.8	28.1-44.1	%
26 P-LCC	143	128-198	10 <sup>3</sup> /uL



*1 Actual*