

Shraddhadeep Greencross Pathology Laboratory

MONTHLY HAEMATOLOGY

CYCLE 14 SAMPLE 11

Explanation of codes used in this report

R - Results removed due to reconstitution error
N - No result returned
C - Result corrected

Authorised by: Stephen Doherty, RIQAS Manager

Issue No: 1

Issue Date: 17/11/2021

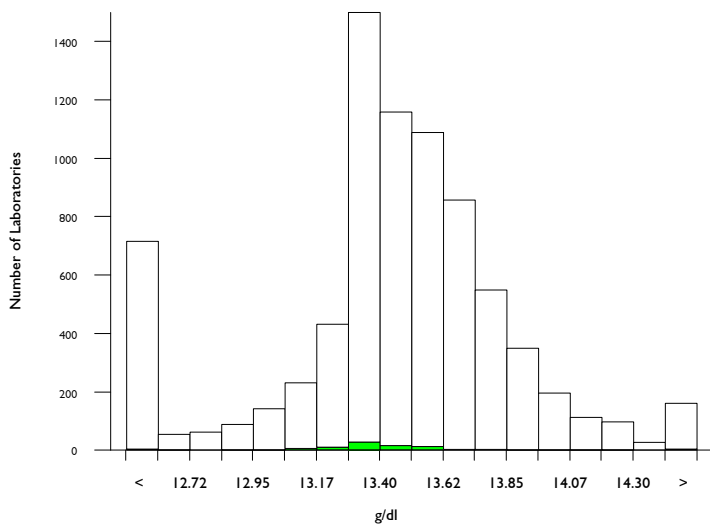
Randox Laboratories Limited
55 Diamond Road
CRUMLIN BT29 4QY
Tel: +44 (0)28 9445 4399
Fax: +44 (0)28 9445 4398
Email: mail@riqas.com

Haemoglobin, g/dl

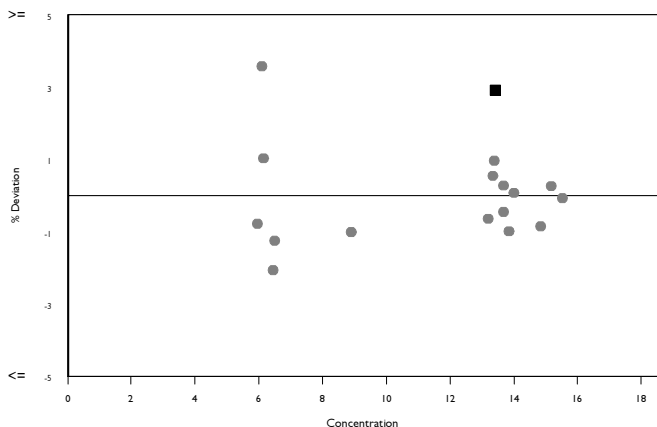
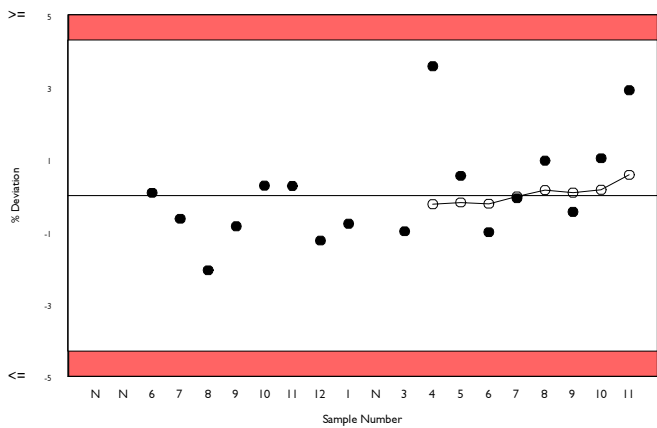
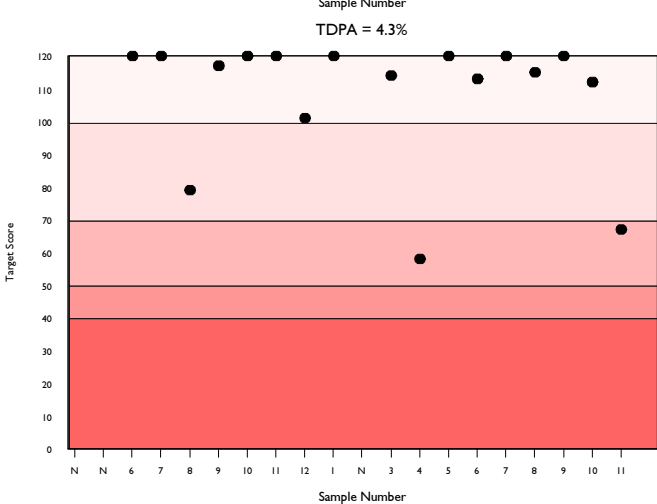
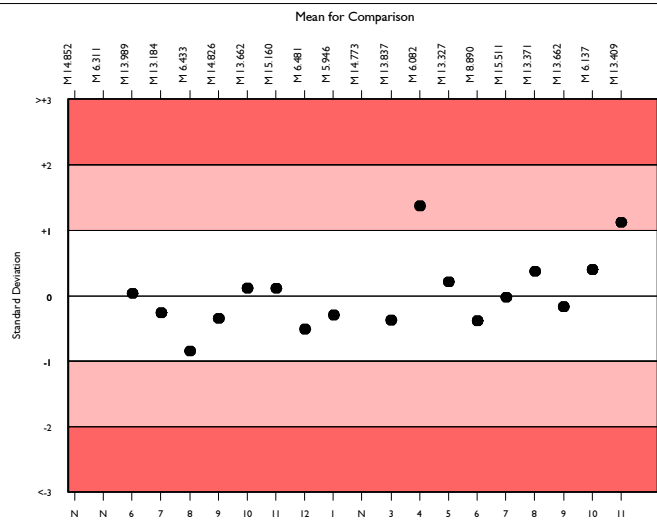
	N	Mean	CV%	U _m	SDPA	Exc.
All Methods	7019	13.517	2.2	0.00	0.35	789
Horiba Yumizen H500/ 550	81	13.409	1.4	0.03	0.35	16

▲ Your Result	13.800	SDI	1.12
		RMSDI	0.22
■ Mean for Comparison	13.409	TS	67
		RMTS	105
		%DEV	2.9
		RM%DEV	0.6

Acceptable limits derived from Biological Variation	N/A
Acceptable limits of performance for RIQAS	4.30%



Method	N	Mean	CV%	U _m
Sysmex XN Series	1424	13.576	1.1	0.00
Sysmex XN-L Series (330/350/450/550)	434	13.407	1.1	0.01
Abbott Cell-Dyn Ruby	376	13.757	1.7	0.01
Beckman Coulter DxH 600/800/900 Series	315	13.335	1.1	0.01
Mindray BC 1000/2000/3000 series	293	13.490	2.9	0.03
Sysmex XS series	309	13.533	1.2	0.01
Sysmex XP Series	296	13.360	2.2	0.02
Siemens/Bayer Advia 120/2120	289	13.684	1.4	0.01
Nihon Kohden Celltac Alpha	265	13.639	2.5	0.03
Mindray BC-6000/6200/6600/6800/6800Plus	270	13.632	1.1	0.01
Sysmex XT series	217	13.517	1.1	0.01
Manual Methods	174	12.186	4.0	0.05
ABX Micros/Minos/ABC VET	152	13.343	2.9	0.04
Calculated from HCT	149	12.048	2.7	0.03
Mindray BC 5100/5180/5300/5380/5390	143	13.509	1.9	0.03
Sysmex KX 21	132	13.324	1.8	0.03
Horiba ABX Pentra 60/80/XLR	125	13.514	1.4	0.02
Nihon Kohden Celltac E/Es	95	13.624	1.7	0.03
Boule Medonic/ Swelab 3-part diff	86	13.697	2.3	0.04
Horiba Yumizen H500/ 550	81	13.409	1.4	0.03
Mindray BC 5000/5150/5140/5130/5120	85	13.505	1.4	0.03

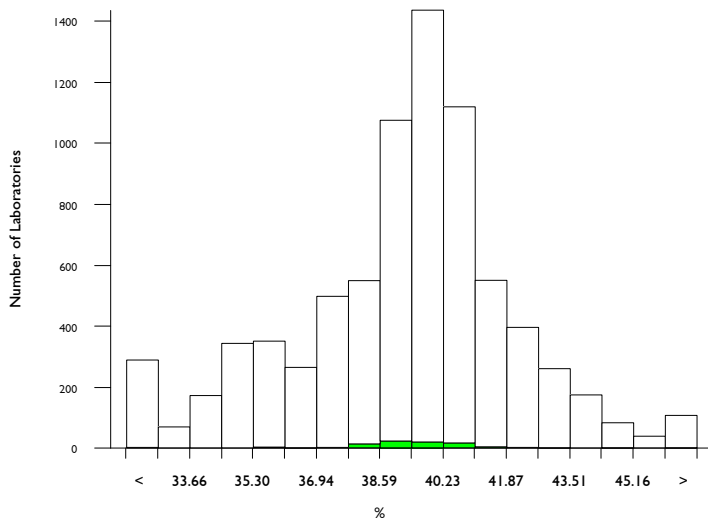


Haematocrit (HCT), %

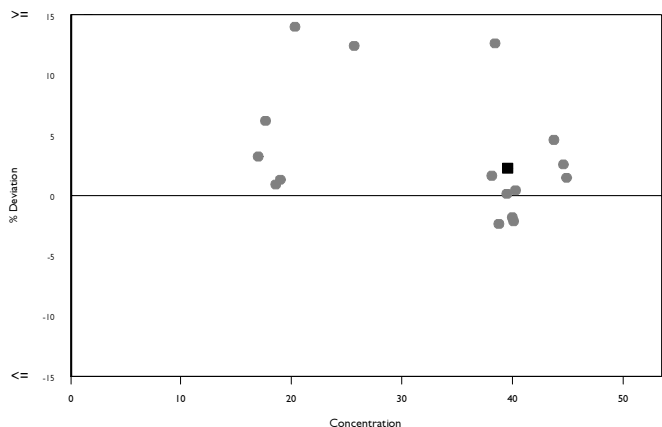
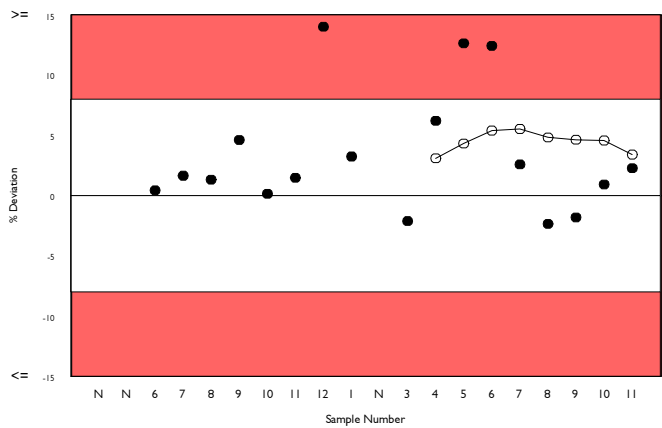
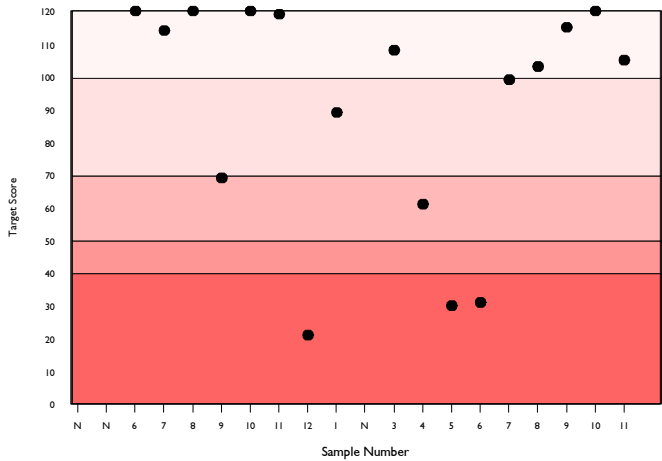
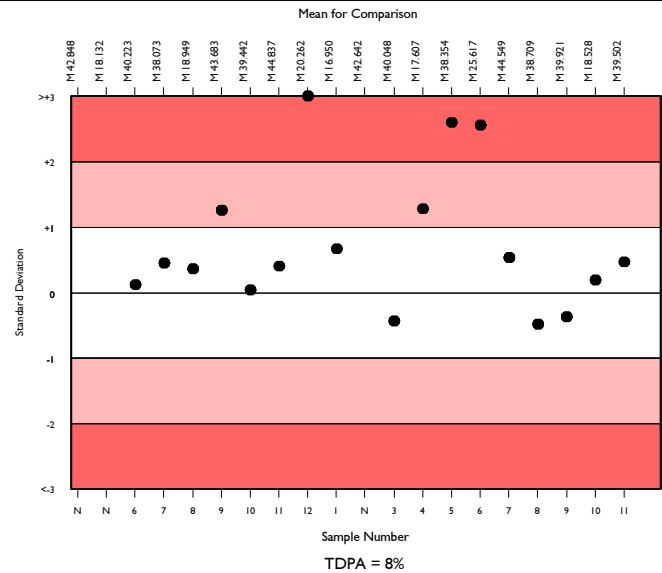
	N	Mean	CV%	U _m	SDPA	Exc.
All Methods	7108	39.413	5.6	0.03	1.92	664
Horiba Yumizen H500/ 550	87	39.502	3.1	0.16	1.92	11

▲ Your Result	40.400	SDI	0.47
		RMSDI	0.70
■ Mean for Comparison	39.502	TS	105
		RMTS	86
		%DEV	2.3
		RM%DEV	3.4

Acceptable limits derived from Biological Variation	N/A
Acceptable limits of performance for RIQAS	8.00%



Method	N	Mean	CV%	U _m
Sysmex XN Series	1434	39.889	1.8	0.02
Sysmex XN-L Series (330/350/450/550)	436	39.497	1.9	0.05
Abbott Cell-Dyn Ruby	366	34.831	2.6	0.06
Beckman Coulter DxH 600/800/900 Series	310	40.356	1.4	0.04
Mindray BC 1000/2000/3000 series	296	40.825	3.7	0.11
Sysmex XS series	314	39.802	2.2	0.06
Sysmex XP Series	289	37.278	2.8	0.08
Siemens/Bayer Advia 120/2120	289	35.083	2.6	0.07
Mindray BC-6000/6200/6600/6800/6800Plus	271	43.632	2.1	0.07
Nihon Kohden Celltac Alpha	260	40.515	3.4	0.11
Sysmex XT series	220	40.105	2.2	0.08
Manual Methods	168	36.460	2.5	0.09
Microhematocrit Centrifugation	175	36.463	2.6	0.09
ABX Micros/Minos/ABC VET	155	39.122	3.6	0.14
Mindray BC 5100/5180/5300/5380/5390	142	41.791	3.2	0.14
Sysmex KX 21	135	37.679	2.8	0.11
Horiba ABX Pentra 60/80/XLR	126	37.766	2.2	0.09
Nihon Kohden Celltac E/Es	98	41.924	3.1	0.16
Boule Medonic/ Swelab 3-part diff	83	38.949	3.2	0.17
Horiba Yumizen H500/ 550	87	39.502	3.1	0.16
Mindray BC 5000/5150/5140/5130/5120	84	42.010	2.6	0.15

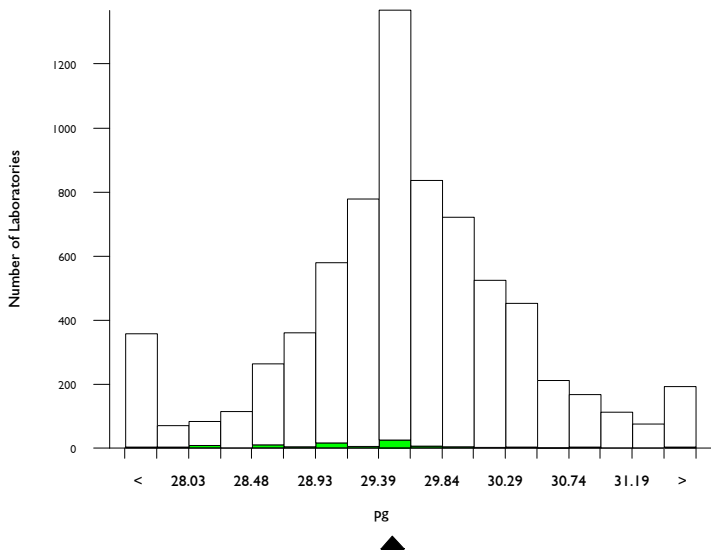


MCH, pg

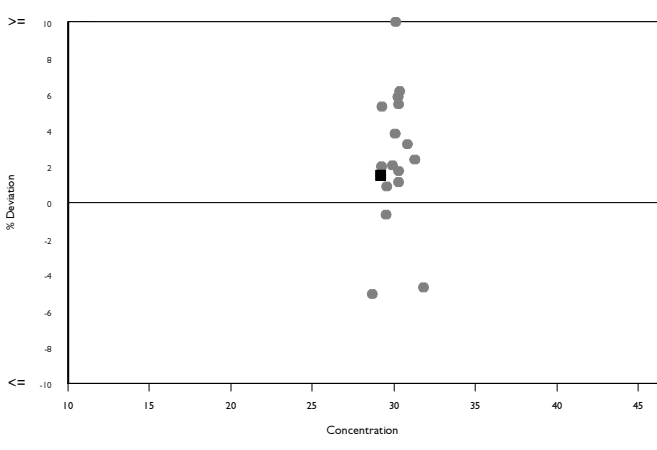
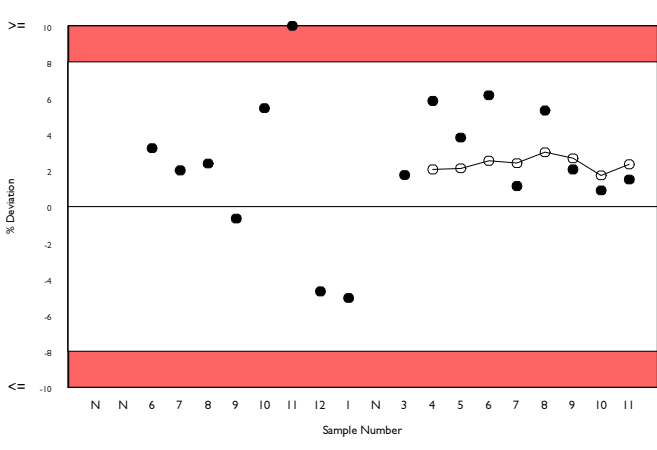
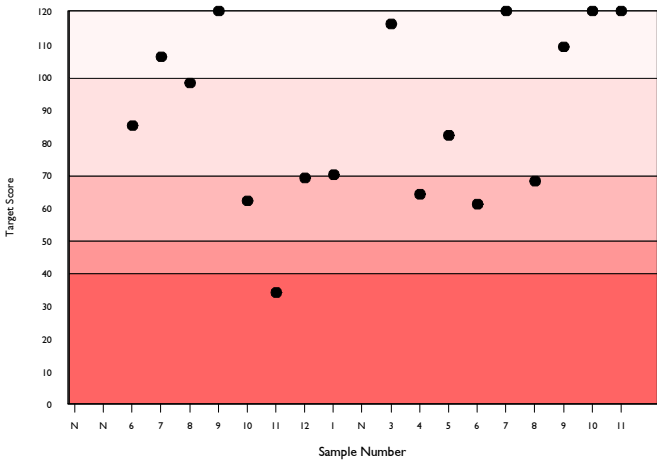
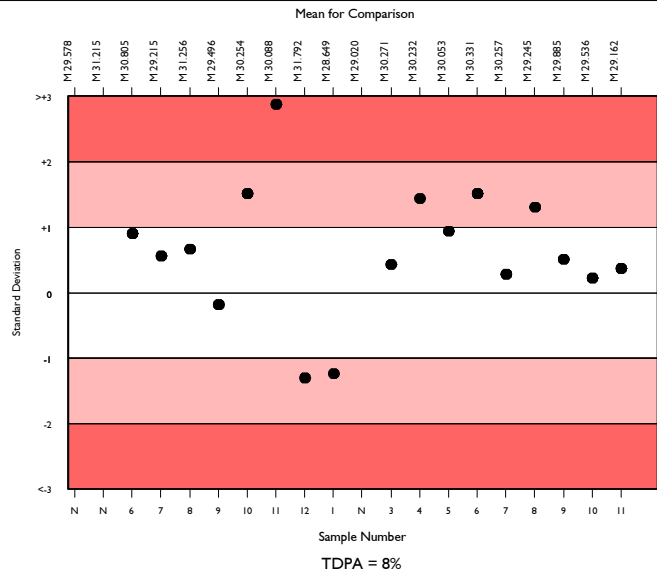
	N	Mean	CV%	U _m	SDPA	Exc.
All Methods	6563	29.616	2.0	0.01	1.21	696
Horiba Yumizen H500/ 550	86	29.162	2.1	0.08	1.19	10

▲ Your Result	29.600	SDI	0.37
		RMSDI	0.57
■ Mean for Comparison	29.162	TS	120
		RMTS	93
		%DEV	1.5
		RM%DEV	2.3

Acceptable limits derived from Biological Variation	N/A
Acceptable limits of performance for RIQAS	8.00%



Method	N	Mean	CV%	U _m
Sysmex XN Series	1426	29.511	1.2	0.01
Sysmex XN-L Series (330/350/450/550)	438	29.421	1.1	0.02
Abbott Cell-Dyn Ruby	374	29.812	2.1	0.04
Beckman Coulter DxH 600/800/900 Series	321	29.643	1.4	0.03
Mindray BC 1000/2000/3000 series	285	29.257	3.0	0.06
Sysmex XS series	309	29.604	1.3	0.03
Sysmex XP Series	290	29.500	2.1	0.05
Siemens/Bayer Advia 120/2120	291	30.283	2.0	0.04
Mindray BC-6000/6200/6600/6800/6800Plus	265	29.704	1.4	0.03
Nihon Kohden Celltac Alpha	257	29.912	2.6	0.06
Sysmex XT series	214	29.456	1.4	0.04
ABX Micros/Minos/ABC VET	143	29.470	3.1	0.09
Mindray BC 5100/5180/5300/5380/5390	142	29.852	2.1	0.07
Sysmex KX 21	128	29.439	1.9	0.06
Horiba ABX Pentra 60/80/XLR	126	29.987	1.6	0.05
Nihon Kohden Celltac E/Es	95	29.626	2.5	0.10
Boule Medonic/ Swelab 3-part diff	85	30.212	2.4	0.10
Horiba Yumizen H500/ 550	86	29.162	2.1	0.08
Mindray BC 5000/5150/5140/5130/5120	85	29.626	2.6	0.10
Erba Lachema Elite series	58	29.476	2.9	0.14
Human Humacount Series	55	29.485	3.1	0.16

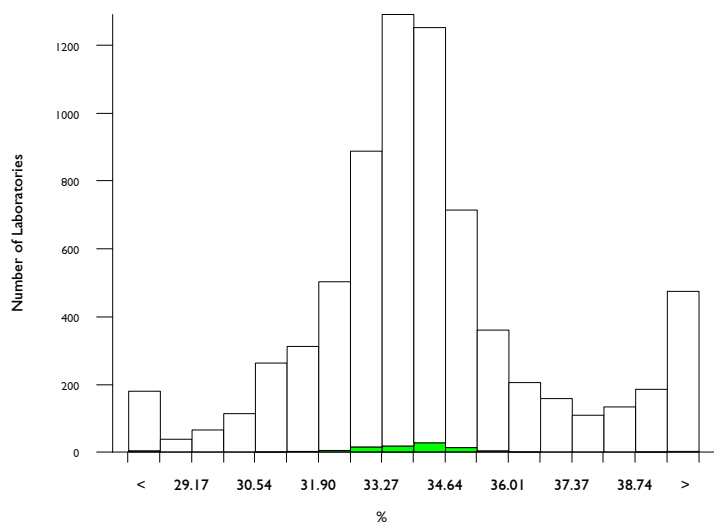


MCHC, %

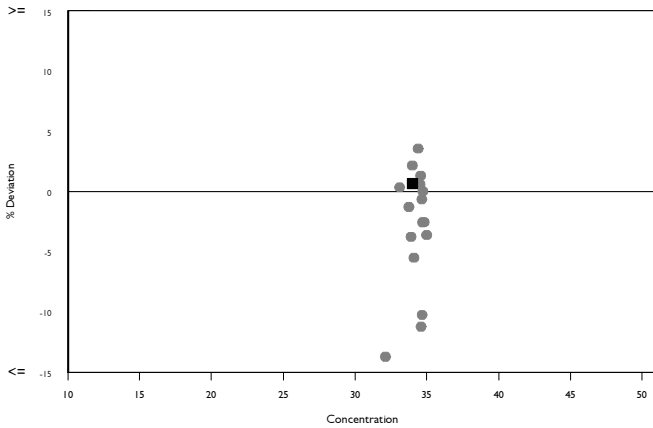
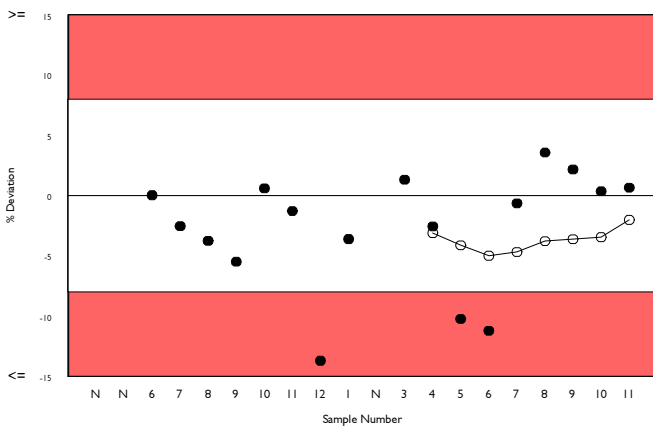
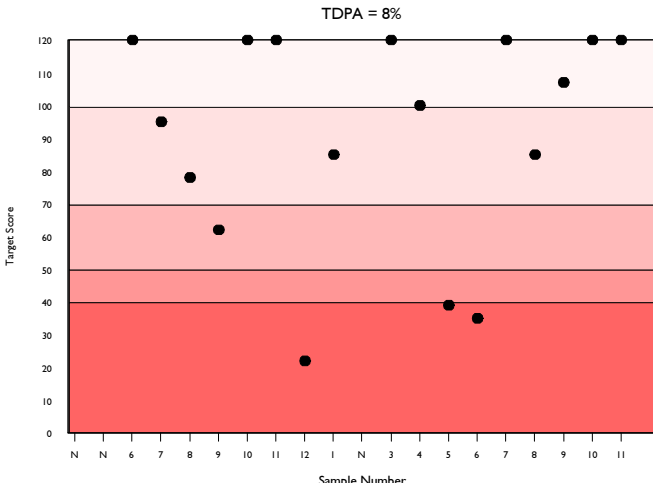
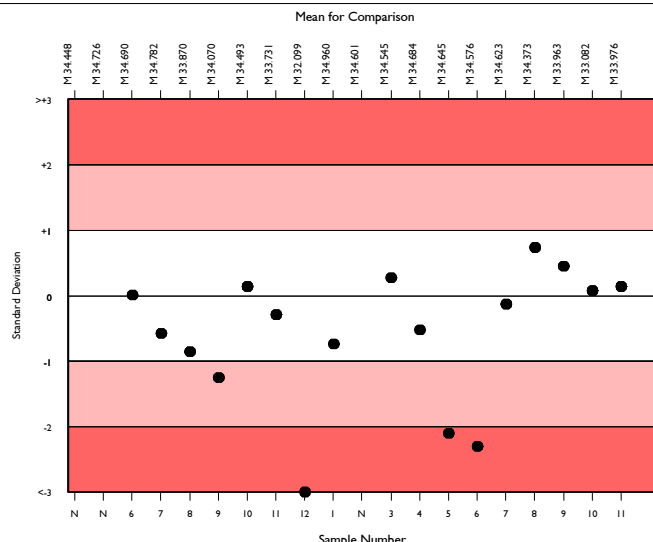
	N	Mean	CV%	U _m	SDPA	Exc.
All Methods	6481	33.961	5.4	0.03	1.65	762
Horiba Yumizen H500/ 550	83	33.976	2.5	0.11	1.65	12

▲ Your Result	34.200	SDI	0.14
		RMSDI	-0.41
■ Mean for Comparison	33.976	TS	120
		RMTS	93
		%DEV	0.7
		RM%DEV	-2.0

Acceptable limits derived from Biological Variation	N/A
Acceptable limits of performance for RIQAS	8.00%



Method	N	Mean	CV%	U _m
Sysmex XN Series	1422	34.028	1.8	0.02
Sysmex XN-L Series (330/350/450/550)	442	33.961	1.9	0.04
Abbott Cell-Dyn Ruby	352	39.520	2.4	0.06
Beckman Coulter DxH 600/800/900 Series	314	33.023	1.6	0.04
Mindray BC 1000/2000/3000 series	282	33.017	3.8	0.09
Sysmex XS series	306	34.026	2.2	0.05
Sysmex XP Series	288	35.797	2.8	0.07
Siemens/Bayer Advia 120/2120	279	38.943	2.6	0.08
Mindray BC-6000/6200/6600/6800/6800Plus	266	31.238	1.9	0.05
Nihon Kohden Celltac Alpha	248	33.748	3.7	0.10
Sysmex XT series	219	33.779	2.2	0.06
ABX Micros/Minos/ABC VET	147	34.193	4.0	0.14
Mindray BC 5100/5180/5300/5380/5390	141	32.279	3.3	0.11
Sysmex KX 21	130	35.361	2.8	0.11
Horiba ABX Pentra 60/80/XLR	121	35.813	2.2	0.09
Nihon Kohden Celltac E/Es	96	32.630	3.4	0.14
Boule Medonic/ Swelab 3-part diff	85	35.038	4.0	0.19
Horiba Yumizen H500/ 550	83	33.976	2.5	0.11
Mindray BC 5000/5150/5140/5130/5120	79	32.166	2.3	0.10
Erba Lachema Elite series	55	32.311	3.6	0.19
Mindray BC 20/30	61	33.820	3.3	0.18

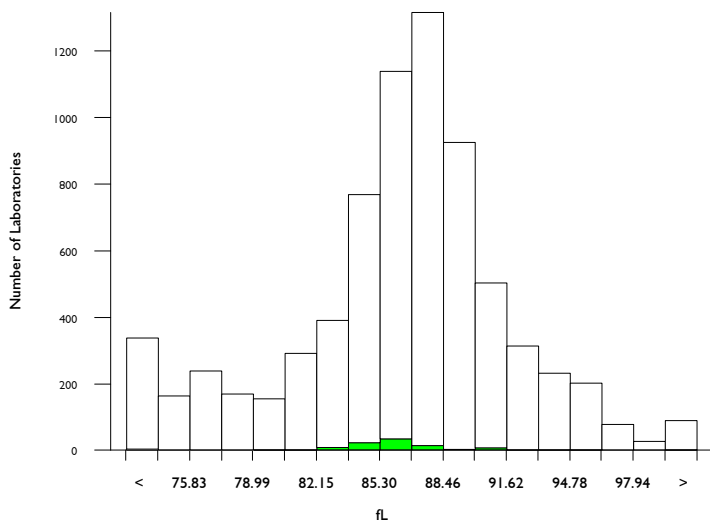


MCV, fL

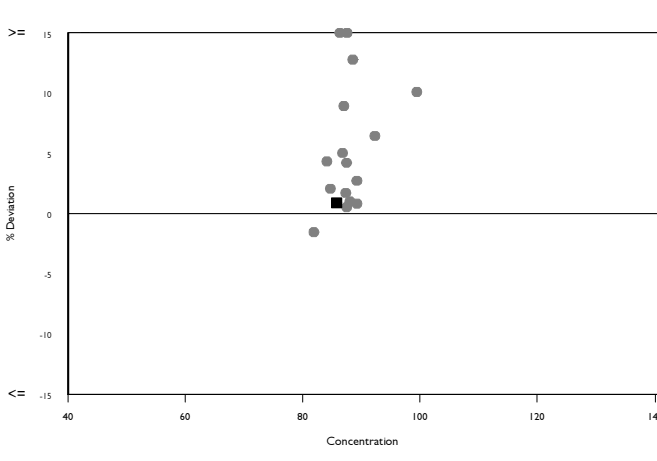
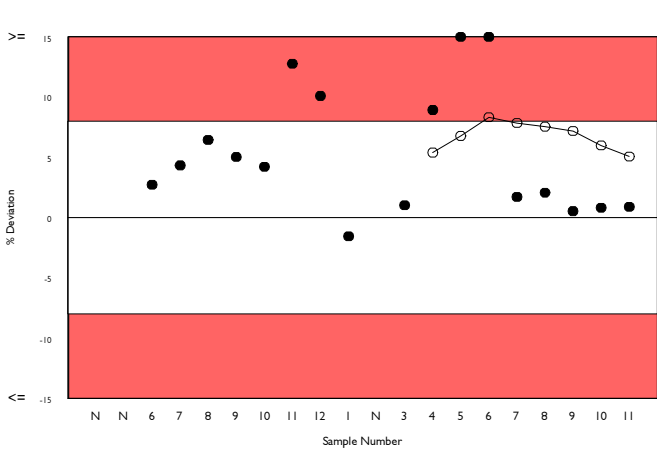
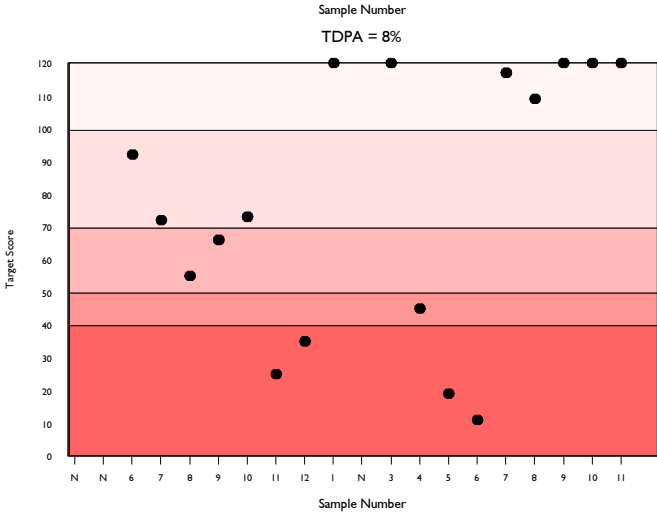
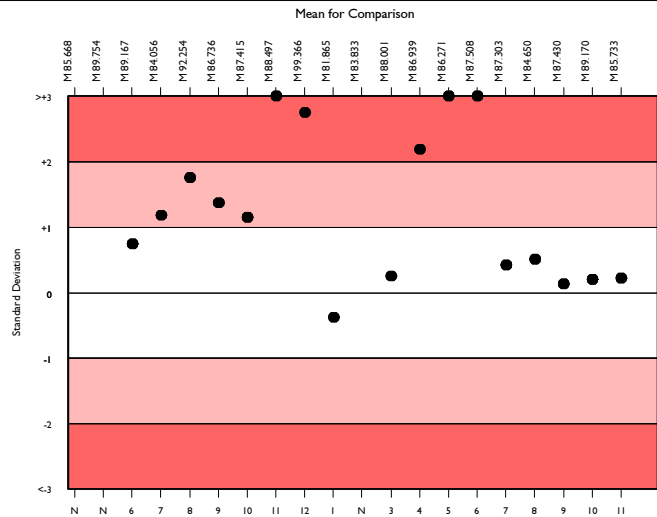
	N	Mean	CV%	U _m	SDPA	Exc.
All Methods	6666	86.889	4.8	0.06	3.55	663
Horiba Yumizen H500/ 550	81	85.733	1.6	0.20	3.50	16

▲ Your Result	86.500	SDI	0.22
		RMSDI	1.24
■ Mean for Comparison	85.733	TS	120
		RMTS	90
		%DEV	0.9
		RM%DEV	5.1

Acceptable limits derived from Biological Variation	N/A
Acceptable limits of performance for RIQAS	8.00%



Method	N	Mean	CV%	U _m
Sysmex XN Series	1432	86.722	1.5	0.04
Sysmex XN-L Series (330/350/450/550)	439	86.687	1.5	0.08
Abbott Cell-Dyn Ruby	369	75.394	2.1	0.10
Beckman Coulter DxH 600/800/900 Series	315	89.537	1.2	0.07
Mindray BC 1000/2000/3000 series	299	88.529	2.9	0.19
Sysmex XS series	308	87.021	1.9	0.12
Sysmex XP Series	290	82.337	2.0	0.12
Siemens/Bayer Advia 120/2120	281	77.770	1.8	0.11
Nihon Kohden Celltac Alpha	259	88.899	2.9	0.20
Mindray BC-6000/6200/6600/6800/6800Plus	260	95.157	1.3	0.10
Sysmex XT series	211	87.224	1.7	0.13
ABX Micros/Minos/ABC VET	144	85.770	3.0	0.27
Mindray BC 5100/5180/5300/5380/5390	142	92.516	2.5	0.25
Sysmex KX 21	129	83.067	2.2	0.20
Horiba ABX Pentra 60/80/XLR	123	83.650	2.0	0.19
Nihon Kohden Celltac E/Es	93	91.009	2.4	0.28
Horiba Yumizen H500/ 550	81	85.733	1.6	0.20
Boule Medonic/ Swelab 3-part diff	85	85.713	2.6	0.30
Mindray BC 5000/5150/5140/5130/5120	83	91.801	1.7	0.22
Erba Lachema Elite series	56	90.908	2.4	0.37
Human Humacount Series	56	91.002	3.8	0.58

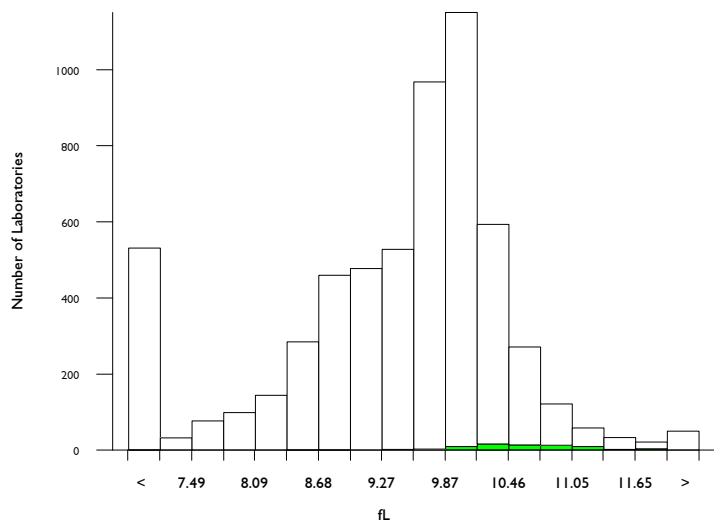


Mean Platelet Volume, fL

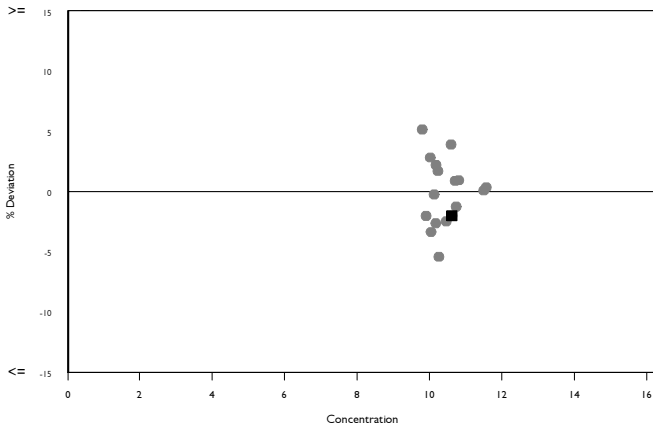
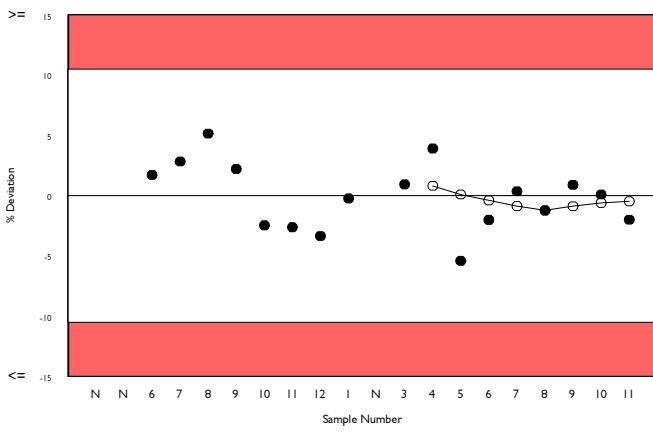
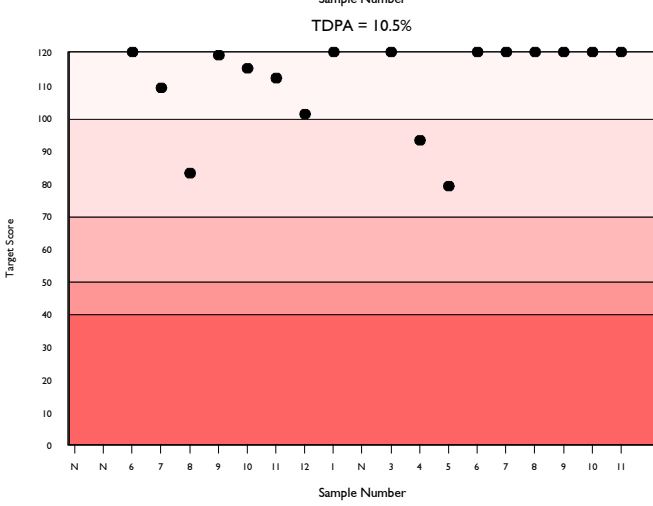
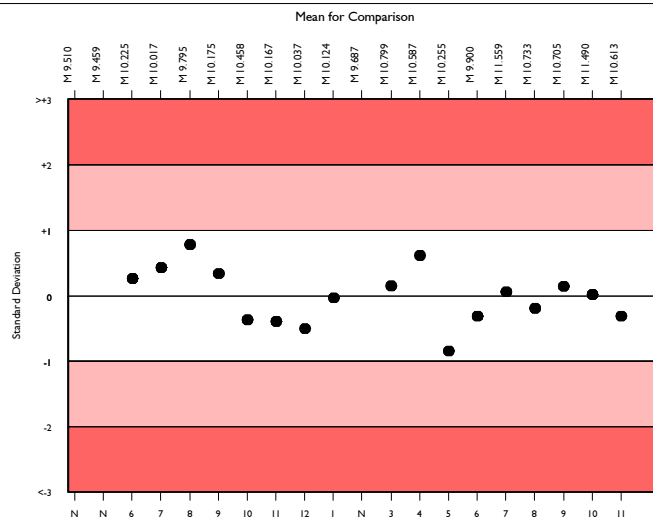
	N	Mean	CV%	U _m	SDPA	Exc.
All Methods	5348	9.575	8.3	0.01	0.61	544
Horiba Yumizen H500/ 550	71	10.613	4.9	0.08	0.68	6

▲ Your Result	10.400	SDI	-0.31
		RMSDI	-0.07
■ Mean for Comparison	10.613	TS	120
		RMTS	113
		%DEV	-2.0
		RM%DEV	-0.5

Acceptable limits derived from Biological Variation	N/A
Acceptable limits of performance for RIQAS	10.50%



Method	N	Mean	CV%	U _m
Sysmex XN Series	1165	9.912	2.3	0.01
Sysmex XN-L Series (330/350/450/550)	332	9.963	2.6	0.02
Abbott Cell-Dyn Ruby	270	4.905	8.0	0.03
Mindray BC 1000/2000/3000 series	265	9.255	6.3	0.05
Beckman Coulter DxH 600/800/900 Series	263	8.900	2.6	0.02
Sysmex XS series	258	10.077	3.0	0.02
Sysmex XP Series	248	9.560	3.2	0.02
Mindray BC-6000/6200/6600/6800/6800Plus	245	10.224	3.7	0.03
Nihon Kohden Celltac Alpha	230	8.465	7.0	0.05
Siemens/Bayer Advia 120/2120	200	10.900	5.3	0.05
Sysmex XT series	175	9.718	2.4	0.02
Mindray BC 5100/5180/5300/5380/5390	113	9.109	3.3	0.04
ABX Micros/Minos/ABC VET	108	8.546	6.1	0.06
Sysmex KX 21	99	9.418	3.1	0.04
Horiba ABX Pentra 60/80/XLR	96	9.624	3.6	0.04
Nihon Kohden Celltac E/Es	76	7.499	5.7	0.06
Boule Medonic/ Swelab 3-part diff	75	8.863	3.8	0.05
Mindray BC 5000/5150/5140/5130/5120	70	10.177	3.2	0.05
Horiba Yumizen H500/ 550	71	10.613	4.9	0.08
Human Humacount Series	53	8.775	9.2	0.14
Mindray BC 20/30	49	9.984	2.6	0.05

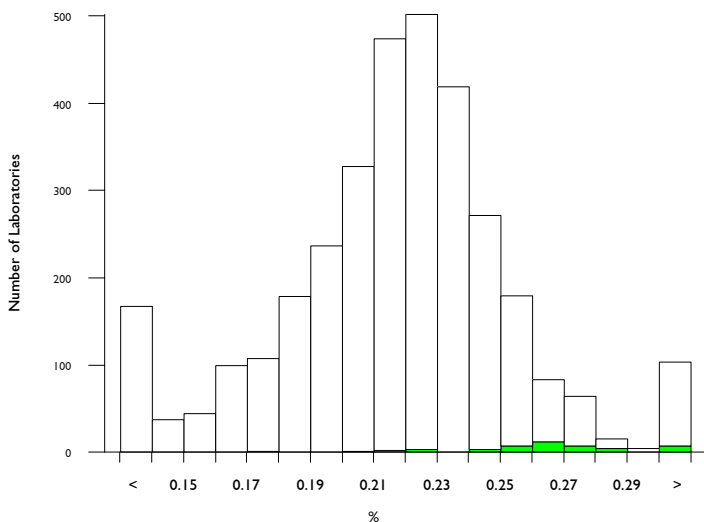


Plateletcrit, %

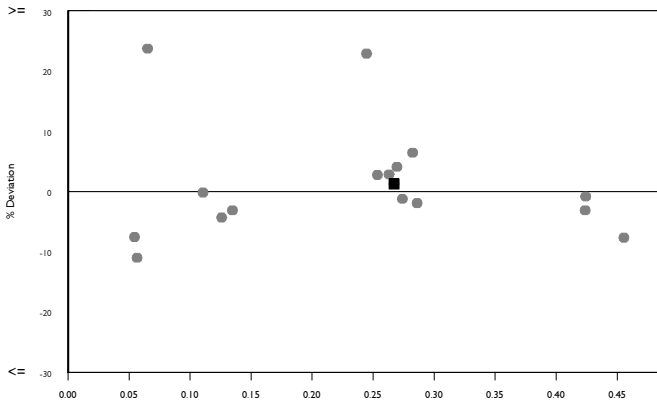
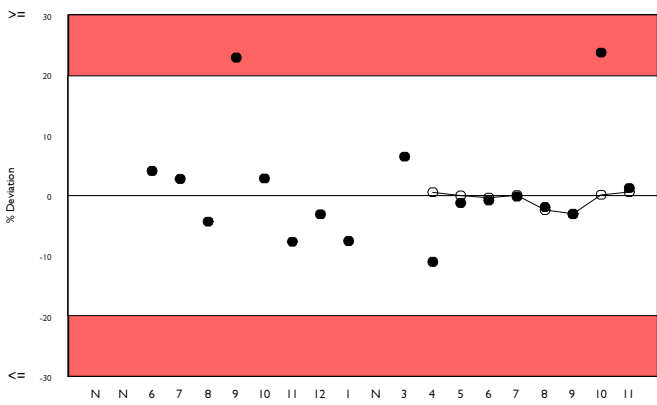
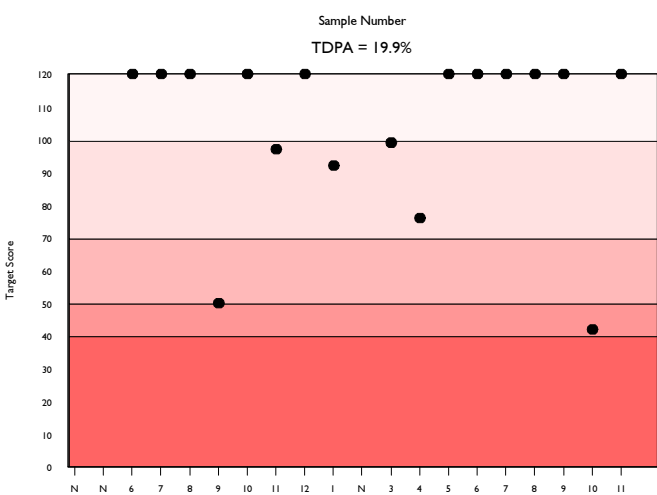
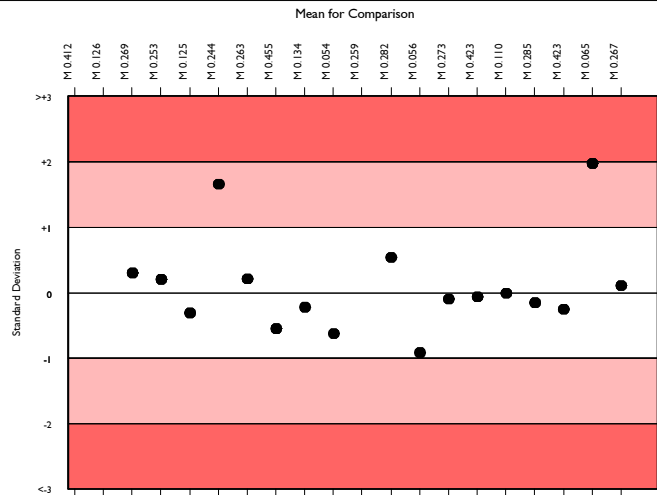
	N	Mean	CV%	U _m	SDPA	Exc.
All Methods	2985	0.223	11.4	0.00	0.03	321
Horiba Yumizen H500/ 550	40	0.267	7.6	0.00	0.03	7

▲ Your Result	0.270	SDI	0.10
		RMSDI	0.05
■ Mean for Comparison	0.267	TS	120
		RMTS	102
		%DEV	1.3
		RM%DEV	0.6

Acceptable limits derived from Biological Variation	N/A
Acceptable limits of performance for RIQAS	19.90%



Method	N	Mean	CV%	U _m
Sysmex XN Series	558	0.228	5.7	0.00
Mindray BC 1000/2000/3000 series	219	0.219	9.3	0.00
Nihon Kohden Celltac Alpha	200	0.195	12.8	0.00
Mindray BC-6000/6200/6600/6800/6800Plus	174	0.245	6.6	0.00
Sysmex XS series	143	0.233	5.9	0.00
Sysmex XP Series	131	0.244	7.0	0.00
Sysmex XN-L Series (330/350/450/550)	142	0.230	6.5	0.00
Sysmex XT series	113	0.225	5.6	0.00
Mindray BC 5100/5180/5300/5380/5390	80	0.217	6.8	0.00
Beckman Coulter DxH 600/800/900 Series	84	0.213	4.7	0.00
Siemens/Bayer Advia 120/2120	86	0.239	9.3	0.00
Abbott Cell-Dyn Ruby	79	0.130	13.1	0.00
Nihon Kohden Celltac E/Es	63	0.181	8.1	0.00
ABX Micros/Minos/ABC VET	62	0.193	11.0	0.00
Mindray BC 5000/5150/5140/5130/5120	66	0.241	8.2	0.00
Boule Medonic/ Swelab 3-part diff	57	0.197	7.9	0.00
Human Humacount Series	49	0.210	14.2	0.01
Mindray BC 20/30	41	0.233	7.4	0.00
Horiba ABX Pentra 60/80/XLR	41	0.229	6.3	0.00
Horiba Yumizen H500/ 550	40	0.267	7.6	0.00
Erba Lachema Elite series	38	0.209	9.7	0.00

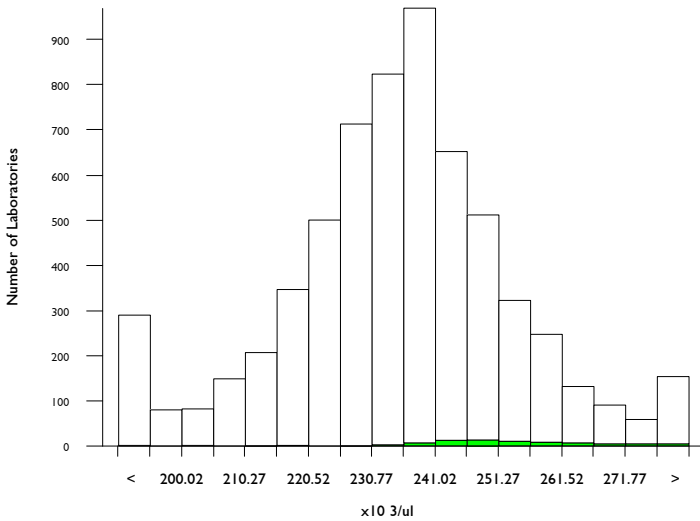


Platelets (Impedance Count), x10³/ul

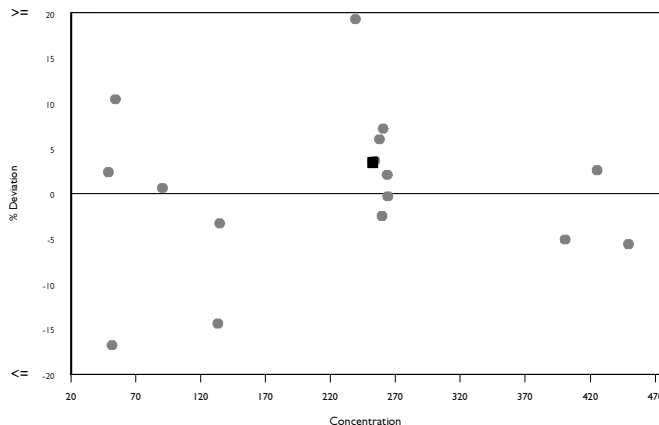
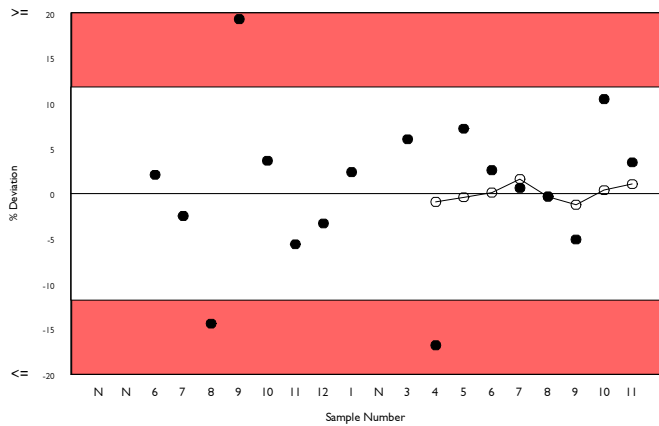
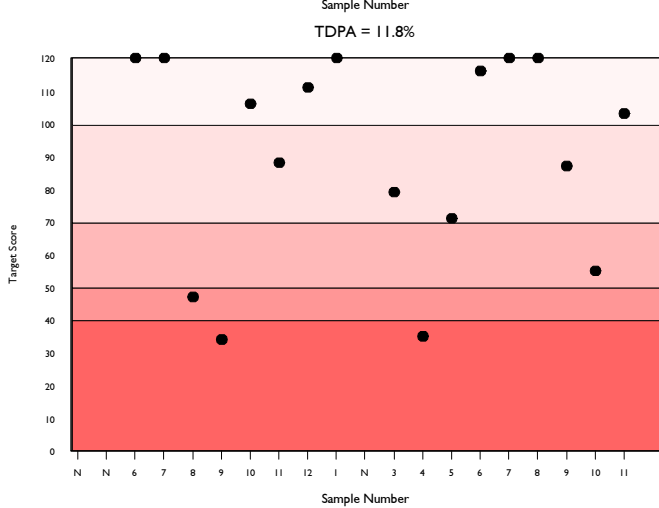
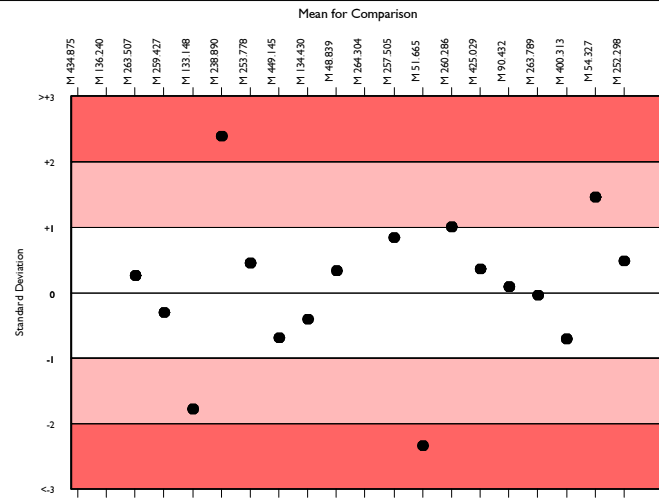
	N	Mean	CV%	U _m	SDPA	Exc.
All Methods	5696	235.902	5.8	0.23	16.92	629
Horiba Yumizen H500/ 550	75	252.298	4.5	1.63	18.10	12

▲ Your Result	261.000	SDI	0.48
		RMSDI	0.15
■ Mean for Comparison	252.298	TS	103
		RMTS	90
		%DEV	3.4
		RM%DEV	1.1

Acceptable limits derived from Biological Variation	N/A
Acceptable limits of performance for RIQAS	11.80%



Method	N	Mean	CV%	U _m
Sysmex XN Series	1347	232.257	3.9	0.31
Sysmex XN-L Series (330/350/450/550)	396	232.255	4.4	0.64
Mindray BC 1000/2000/3000 series	296	239.323	6.3	1.09
Sysmex XP Series	292	250.817	5.2	0.95
Beckman Coulter DxH 600/800/900 Series	286	238.374	3.8	0.67
Sysmex XS series	273	228.537	4.5	0.79
Nihon Kohden Celltac Alpha	260	232.712	7.2	1.30
Mindray BC-6000/6200/6600/6800/6800Plus	249	240.763	4.5	0.87
Sysmex XT series	191	232.366	4.1	0.86
ABX Micros/Minos/ABC VET	144	233.830	8.2	2.01
Mindray BC 5100/5180/5300/5380/5390	139	238.540	4.6	1.15
Sysmex KX 21	132	242.999	5.5	1.47
Horiba ABX Pentra 60/80/XLR	113	234.766	4.5	1.24
Nihon Kohden Celltac E/Es	96	241.690	6.0	1.86
Boule Medonic/ Swelab 3-part diff	87	227.288	6.6	2.02
Mindray BC 5000/5150/5140/5130/5120	83	238.642	5.4	1.77
Horiba Yumizen H500/ 550	75	252.298	4.5	1.63
Erba Lachema Elite series	56	231.518	7.5	2.90
Human Humacount Series	59	235.946	8.4	3.21
Mindray BC 20/30	62	236.452	5.7	2.15
Mindray BC 5600/5800	55	243.313	5.0	2.06

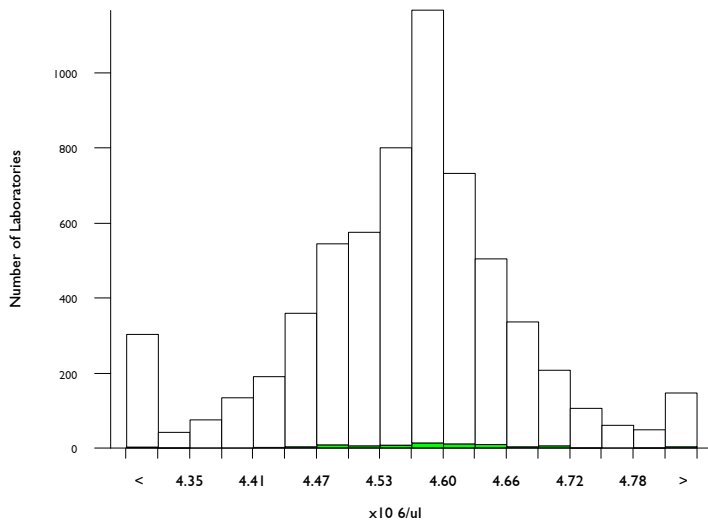


RBC (Impedance Count), x10⁶/ul

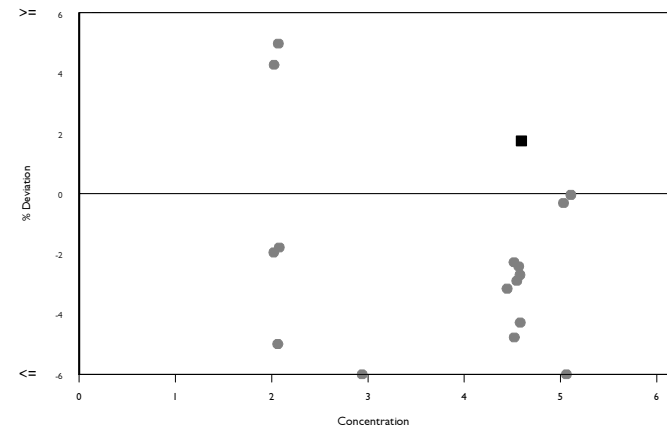
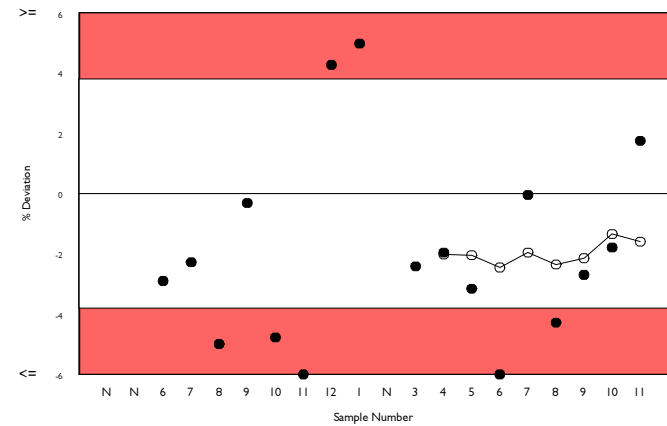
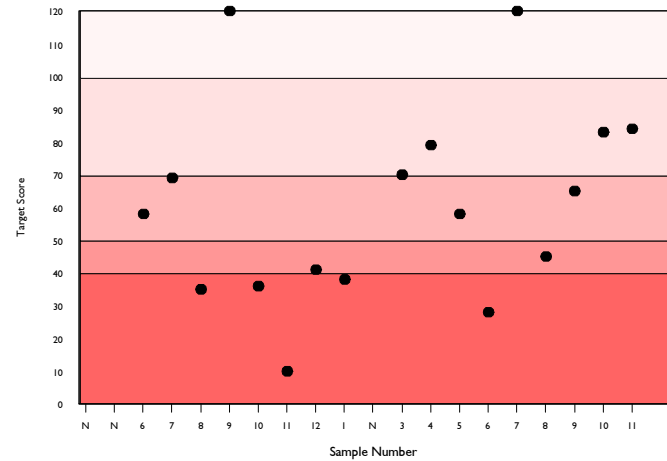
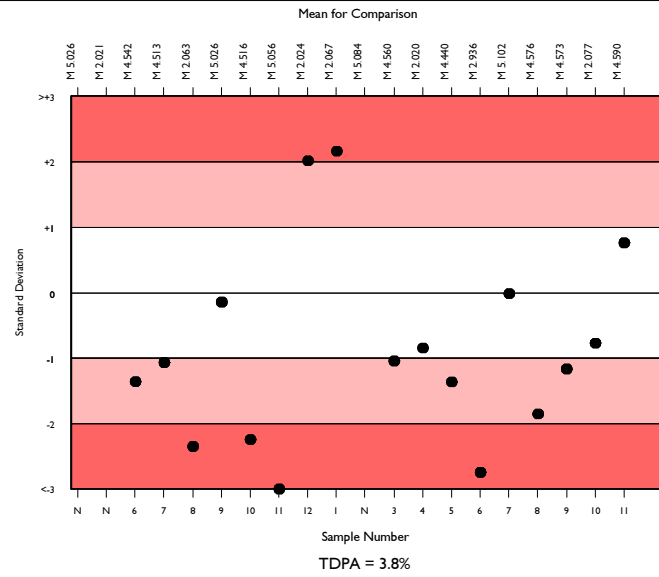
	N	Mean	CV%	U _m	SDPA	Exc.
All Methods	5799	4.570	1.8	0.00	0.11	528
Horiba Yumizen H500/ 550	73	4.590	1.6	0.01	0.11	11

▲ Your Result	4.670	SDI	0.76
		RMSDI	-0.69
■ Mean for Comparison	4.590	TS	84
		RMTS	67
		%DEV	1.8
		RM%DEV	-1.6

Acceptable limits derived from Biological Variation	N/A
Acceptable limits of performance for RIQAS	3.80%



Method	N	Mean	CV%	U _m
Sysmex XN Series	1382	4.599	1.2	0.00
Sysmex XN-L Series (330/350/450/550)	413	4.559	1.3	0.00
Mindray BC 1000/2000/3000 series	302	4.607	2.6	0.01
Sysmex XP Series	298	4.527	1.5	0.00
Beckman Coulter DxH 600/800/900 Series	296	4.505	1.2	0.00
Nihon Kohden Celltac Alpha	267	4.561	2.2	0.01
Sysmex XS series	274	4.570	1.4	0.00
Mindray BC-6000/6200/6600/6800/6800Plus	249	4.590	1.6	0.01
Sysmex XT series	190	4.595	1.2	0.01
ABX Micros/Minos/ABC VET	147	4.523	2.1	0.01
Mindray BC 5100/5180/5300/5380/5390	145	4.530	2.2	0.01
Sysmex KX 21	124	4.539	1.5	0.01
Horiba ABX Pentra 60/80/XLR	116	4.509	1.4	0.01
Nihon Kohden Celltac E/Es	103	4.601	2.1	0.01
Boule Medonic/ Swelab 3-part diff	83	4.551	2.0	0.01
Mindray BC 5000/5150/5140/5130/5120	87	4.542	2.5	0.02
Horiba Yumizen H500/ 550	73	4.590	1.6	0.01
Erba Lachema Elite series	60	4.544	1.6	0.01
Human Humacount Series	61	4.613	3.0	0.02
Mindray BC 20/30	59	4.502	1.9	0.01
Mindray BC 5600/5800	54	4.611	1.4	0.01

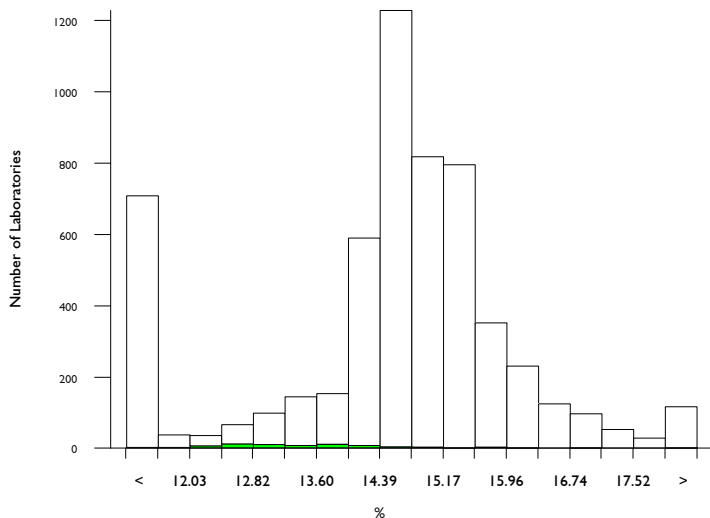
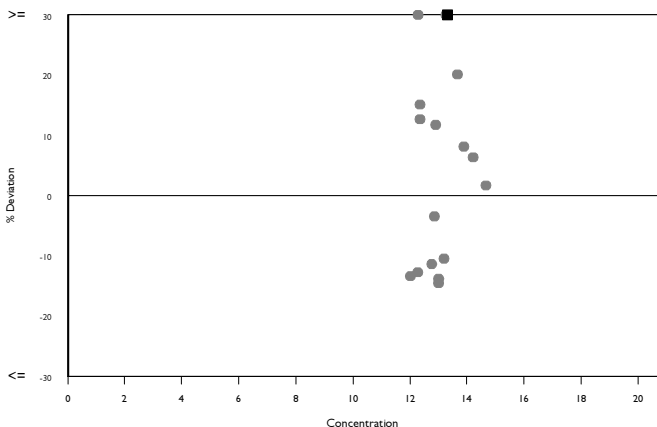
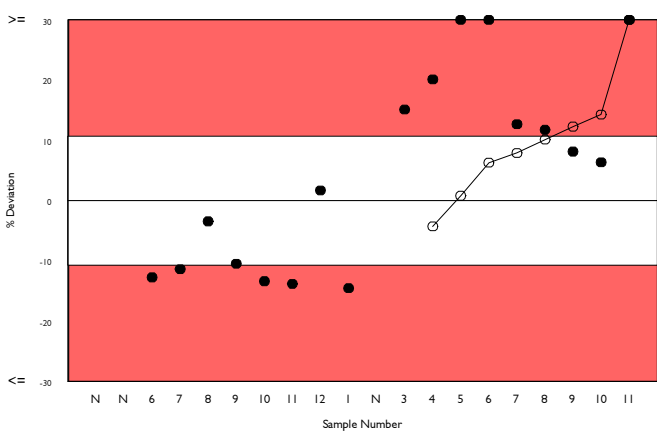
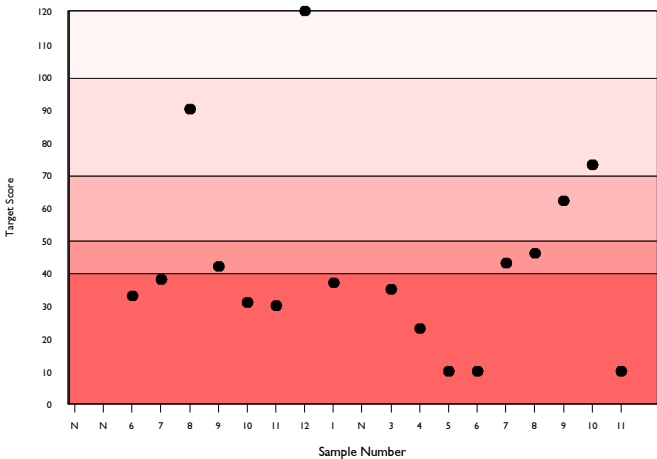
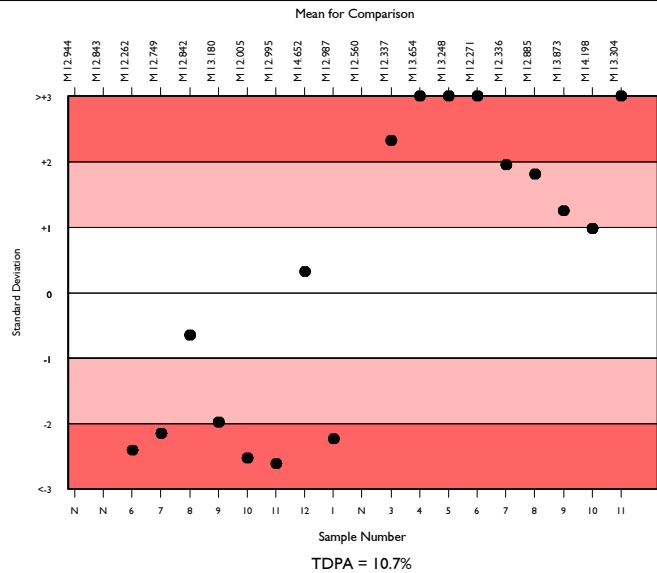


Red Cell Dist. Width CV, %

	N	Mean	CV%	U _m	SDPA	Exc.
All Methods	4936	14.784	7.1	0.02	0.96	730
Horiba Yumizen H500/ 550	68	13.304	6.5	0.13	0.87	6

▲ Your Result	42.000	SDI	33.16
		RMSDI	5.49
■ Mean for Comparison	13.304	TS	10
		RMTS	34
		%DEV	215.7
		RM%DEV	35.7

Acceptable limits derived from Biological Variation	N/A
Acceptable limits of performance for RIQAS	10.70%
SDI in bottom 5% of peer group	
TS & %DEV outside limits	



Method	N	Mean	CV%	U _m
Sysmex XN Series	1187	14.610	1.9	0.01
Sysmex XN-L Series (330/350/450/550)	328	14.422	1.9	0.02
Abbott Cell-Dyn Ruby	255	10.515	5.0	0.04
Sysmex XS series	244	15.294	2.1	0.03
Beckman Coulter DxH 600/800/900 Series	241	15.261	1.5	0.02
Mindray BC 1000/2000/3000 series	227	14.486	3.6	0.04
Sysmex XP Series	219	10.450	4.9	0.04
Mindray BC-6000/6200/6600/6800/6800Plus	234	15.226	1.1	0.01
Nihon Kohden Celltac Alpha	221	15.094	5.6	0.07
Siemens/Bayer Advia 120/2120	209	15.883	2.8	0.04
Sysmex XT series	176	15.171	1.8	0.03
Mindray BC 5100/5180/5300/5380/5390	111	14.314	2.3	0.04
Horiba ABX Pentra 60/80/XLR	98	14.111	5.5	0.10
Sysmex KX 21	72	10.717	5.1	0.08
Nihon Kohden Celltac E/Es	83	16.231	5.8	0.13
ABX Micros/Minos/ABC VET	72	13.281	5.7	0.11
Mindray BC 5000/5150/5140/5130/5120	70	16.792	2.4	0.06
Horiba Yumizen H500/ 550	68	13.304	6.5	0.13
Boule Medonic/ Swelab 3-part diff	61	12.759	7.2	0.15
Mindray BC 20/30	49	14.335	1.7	0.04
Human Humacount Series	44	14.441	5.3	0.14

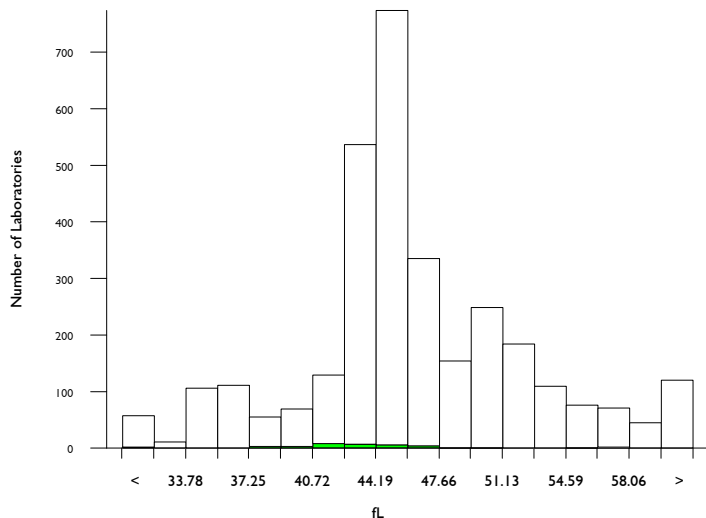


Red Cell Dist. Width SD, fL

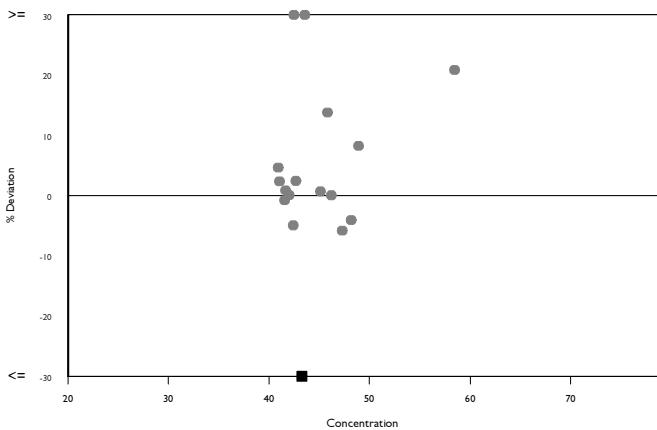
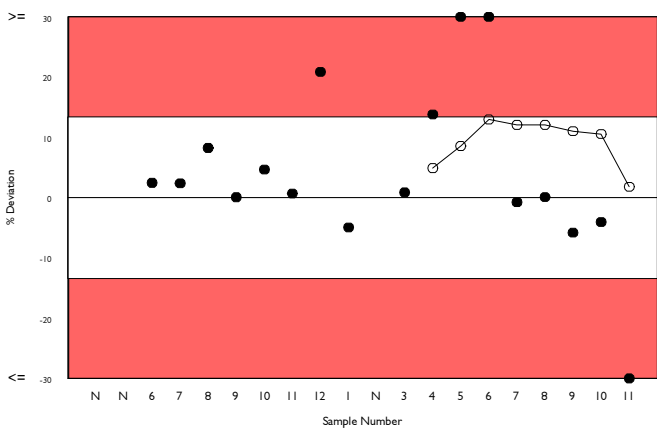
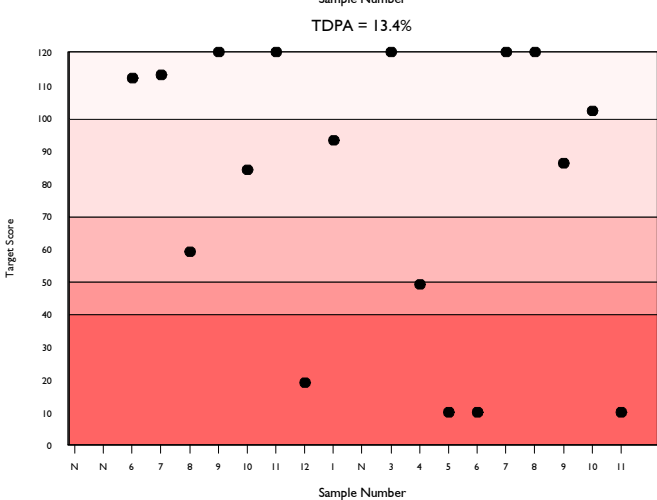
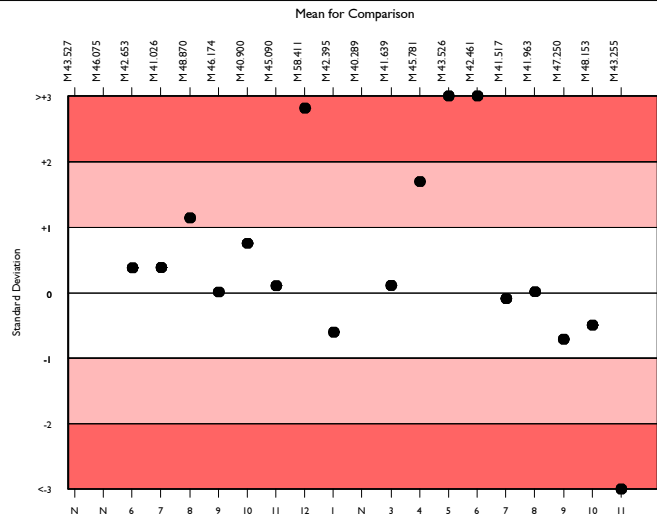
	N	Mean	CV%	U _m	SDPA	Exc.
All Methods	2891	45.926	10.1	0.11	3.74	301
Horiba Yumizen H500/ 550	33	43.255	6.2	0.58	3.52	5

▲ Your Result	14.400	SDI	-8.19
		RMSDI	0.22
■ Mean for Comparison	43.255	TS	10
		RMTS	72
		%DEV	-66.7
		RM%DEV	1.8

Acceptable limits derived from Biological Variation	N/A
Acceptable limits of performance for RIQAS	13.40%
SDI in bottom 5% of peer group	
TS & %DEV outside limits	



Method	N	Mean	CV%	U _m
Sysmex XN Series	819	44.555	2.3	0.04
Mindray BC 1000/2000/3000 series	203	42.972	4.9	0.18
Sysmex XP Series	177	35.705	3.7	0.13
Sysmex XN-L Series (330/350/450/550)	177	44.162	2.3	0.10
Mindray BC-6000/6200/6600/6800/6800Plus	172	51.661	2.5	0.12
Sysmex XS series	163	45.860	2.9	0.13
Beckman Coulter DxH 600/800/900 Series	156	50.538	1.5	0.08
Sysmex XT series	125	45.662	2.9	0.15
Nihon Kohden Celltac Alpha	91	53.182	6.3	0.44
Mindray BC 5100/5180/5300/5380/5390	59	54.795	5.6	0.50
Sysmex KX 21	58	36.434	3.7	0.22
Mindray BC 5000/5150/5140/5130/5120	58	56.728	2.6	0.24
Nihon Kohden Celltac E/Es	50	59.701	5.7	0.60
Boule Medonic/ Swelab 3-part diff	46	53.685	15.3	1.51
Mindray BC 20/30	36	45.447	1.8	0.17
Horiba Yumizen H500/ 550	33	43.255	6.2	0.58
Erba Lachema Elite series	34	51.322	8.5	0.94
Human Humacount Series	27	49.430	7.3	0.87
Mindray BC 5600/5800	26	47.212	4.8	0.55
Nihon Kohden Celltac G	25	65.997	5.3	0.87
Beckman Coulter LH700 Series	22	49.455	1.9	0.25

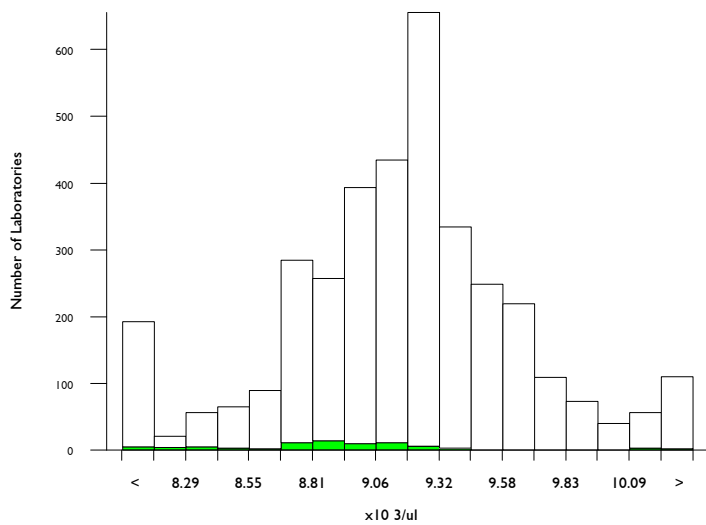


WBC (Impedance Count), x10³/ul

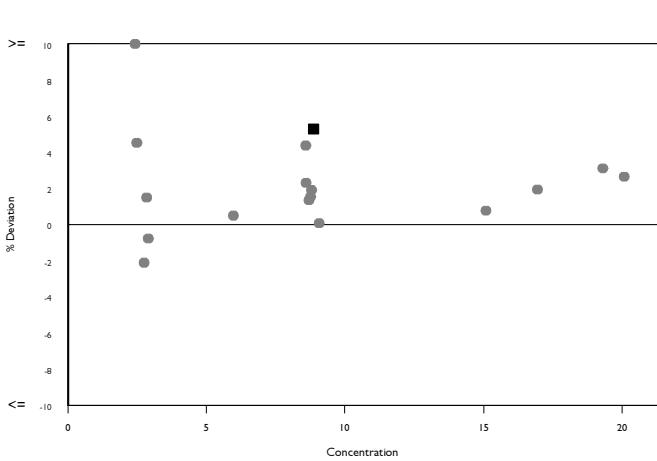
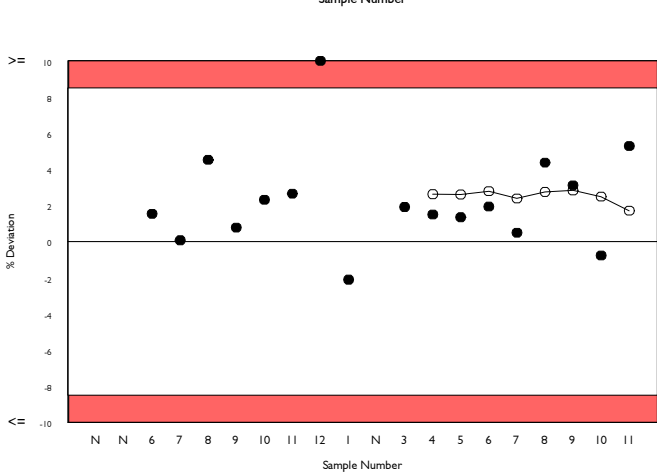
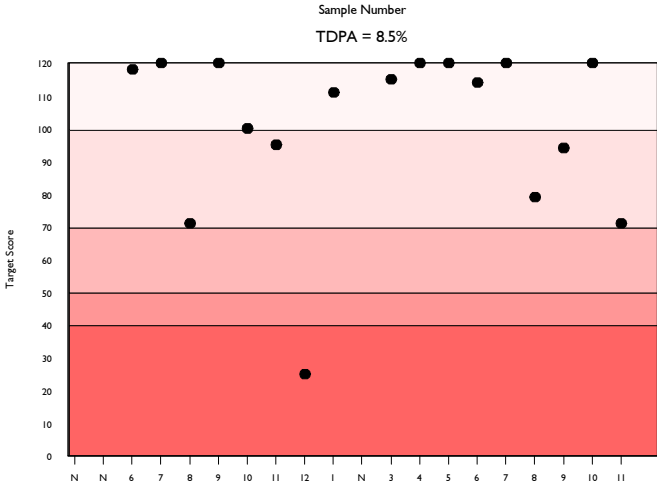
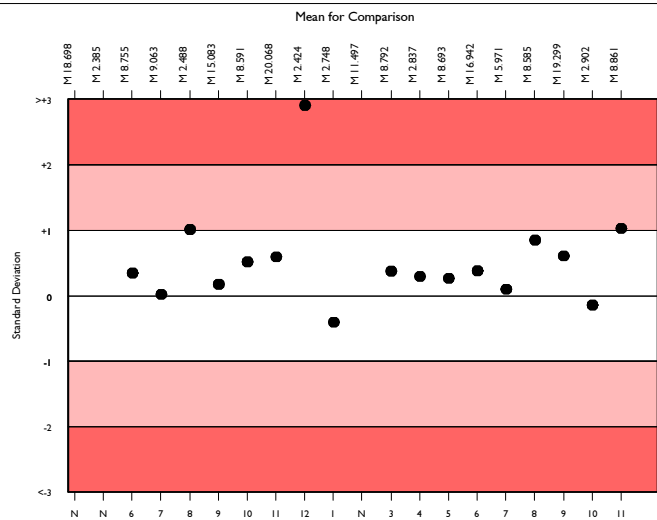
	N	Mean	CV%	U _m	SDPA	Exc.
All Methods	3250	9.196	3.7	0.01	0.48	385
Horiba Yumizen H500/ 550	70	8.861	3.6	0.05	0.46	9

▲ Your Result	9.330	SDI	1.02
		RMSDI	0.33
■ Mean for Comparison	8.861	TS	71
		RMTS	106
		%DEV	5.3
		RM%DEV	1.7

Acceptable limits derived from Biological Variation	N/A
Acceptable limits of performance for RIQAS	8.50%



Method	N	Mean	CV%	U _m
Mindray BC 1000/2000/3000 series	298	9.246	3.8	0.03
Sysmex XP Series	308	9.219	3.1	0.02
Beckman Coulter DxH 600/800/900 Series	278	9.212	2.6	0.02
Nihon Kohden Celltac Alpha	259	8.977	2.7	0.02
Sysmex XN-L Series (330/350/450/550)	223	9.235	2.2	0.02
Mindray BC 5100/5180/5300/5380/5390	157	9.484	3.6	0.03
ABX Micros/Minos/ABC VET	139	9.077	4.0	0.04
Sysmex KX 21	120	9.102	3.3	0.03
Horiba ABX Pentra 60/80/XLR	112	9.130	2.6	0.03
Nihon Kohden Celltac E/Es	99	9.129	2.9	0.03
Boule Medonic/ Swelab 3-part diff	80	9.296	3.4	0.04
Horiba Yumizen H500/ 550	70	8.861	3.6	0.05
Erba Lachema Elite series	59	9.215	4.0	0.06
Mindray BC 20/30	60	9.515	2.6	0.04
Human Humacount Series	53	8.845	3.3	0.05
Nihon Kohden Celltac G	52	9.230	2.0	0.03
Beckman Coulter LH700 Series	45	9.215	2.2	0.04
Beckman Coulter Ac. T 5 series	42	9.226	2.6	0.05
Nihon Kohden Celltac F	40	9.219	2.8	0.05
Abbott Cell-Dyn Emerald 18	41	9.040	4.2	0.07
Abx Pentra 120/Nexus series	35	9.777	2.8	0.06



Analyte	Mean for Comparison	Your Result	SDI	RMSDI	%DEV	RM%DEV	TS	RMTS	Performance
Haemoglobin	13.409	13.800	1.12	0.22	2.9	0.6	67	105	
Haematocrit (HCT)	39.502	40.400	0.47	0.70	2.3	3.4	105	86	
MCH	29.162	29.600	0.37	0.57	1.5	2.3	120	93	
MCHC	33.976	34.200	0.14	-0.41	0.7	-2.0	120	93	
MCV	85.733	86.500	0.22	1.24	0.9	5.1	120	90	
Mean Platelet Volume	10.613	10.400	-0.31	-0.07	-2.0	-0.5	120	113	
Plateletcrit	0.267	0.270	0.10	0.05	1.3	0.6	120	102	
Platelets (Impedance Count)	252.298	261.000	0.48	0.15	3.4	1.1	103	90	
RBC (Impedance Count)	4.590	4.670	0.76	-0.69	1.8	-1.6	84	67	
Red Cell Dist. Width CV	13.304	42.000	33.16	5.49	215.7	35.7	10	34	▲
Red Cell Dist. Width SD	43.255	14.400	-8.19	0.22	-66.7	1.8	10	72	▲
WBC (Impedance Count)	8.861	9.330	1.02	0.33	5.3	1.7	71	106	

ORMSDI 0.65

ORM%DEV 4.0

ORMTS 88

END OF REPORT