

TRANSASIA BIOMEDICALS LIMITED			<b>TRANSASIA</b> <sup>®</sup> Bio-Medicals Ltd.
IQOQPQ of Erba H560 (Omega Path Lab)			
Instrument Name	H560	SN	K11042133063

## INSTALLATION QUALIFICATION

For

**Omega Path Lab**

**ERBA H560**

**AUTOMATED HEAMATOLOGY ANALYZER**

Manufactured by ERBA MANNHEIM

&

Marketed by:

Transasia Bio-Medicals Ltd.,

Transasia House,

Chandivali Studio road,

Andheri (E),


MUMBAI - 400 072

<b>TRANSASIA BIOMEDICALS LIMITED</b>			<b>TRANSASIA<sup>®</sup></b> Bio-Medicals Ltd.
<b>IQOQPQ of Erba H560 (Omega Path Lab)</b>			
<b>Instrument Name</b>	<b>H560</b>	<b>SN</b>	<b>K11042133063</b>

**Table of Contents**

<b>Sr. No.</b>	<b>Contents</b>
I	Approval of the IQ procedure
II	Instructions
III	Scope
IV	Ancillary Information
V	Installation Qualification
VI	Installation Procedure
VII	Comments
VIII	System Certification
IX	Appendices



TRANSASIA BIOMEDICALS LIMITED			
IQOQPQ of Erba H560 (Omega Path Lab)			
Instrument Name	H560	SN	K11042133063

## II. Instructions

1. This document is to be completed at the time the system is shifted to its current location and set up for operation.
2. An authorized TRANSASIA representative will check the system and enter the specific data as outlined in the appropriate Installation Qualification. Each result will be noted and dated.
3. ALL deviations from normal specification to include any problems with installation will be noted under COMMENTS. All resolution to such problems will also be noted in the COMMENTS section. Additional space is provided at the end of this protocol for the same.
4. This document contains proprietary information and is in no way to be copied, photographed or duplicated in any way without expressed written authorization by the Transasia Bio-Medicals Ltd., Transasia House, Mumbai.

## III. Scope

This Installation Qualification protocol will be performed on the ERBA Hematology Analyzer, Model H560, and Serial No. K11042133063 located in Omega Path Lab Delhi. This Protocol will define the documentation that will be used to evaluate the instruments installation in accordance with the manufacture's specifications and intended use. Successful completion of this protocol will verify that the instrument identified has been installed in accordance with the intended usage.

Installation checks will also be performed to verify that the instrument has been installed with proper connections and utilities.

Trained, knowledgeable personnel will perform qualification studies.

Any exceptional conditions encountered during the qualification studies will be identified for review. Exceptional conditions will be investigated and the appropriate course of action determined. All documents will be initialed and dated.


<b>TRANSASIA BIOMEDICALS LIMITED</b>			<b>TRANSASIA<sup>®</sup></b> Bio-Medicals Ltd.
<b>IQOQPQ of Erba H560 (Omega Path Lab)</b>			
<b>Instrument Name</b>	<b>H560</b>	<b>SN</b>	<b>K11042133063</b>

**IV. Ancillary Information.**

**a. Utilities**

Sr.No.	Utility	Yes	Verified By
1.	Environmental condition as per requirement: (Ambient range of temperature 15 – 30 °C, relative humidity 30% to 85%, air conditioning facility, non exposure to direct sunlight, non-interference from high frequency radio waves)	Yes	Devender Singh
2.	Adequate space for installation : (Minimum in mm. W 360 X D 410 X H 475 for the main unit clearance of around 50 cm from back around 50cm on top and around 50 cm on sides for the main unit)	Yes	Devender Singh
3.	DIL-H560; LYSE1 & LYSE2 BOTTLES to be placed within a distance of 2 meters :	Yes	Devender Singh
4.	Power Source Requirements* It should have minimum five 5amps plug. It should have proper grounding. In case of online UPS minimum power handling capacity should be minimum 1KVA Line- Neutral voltage:_____	Yes	Devender Singh
	Line -Earth voltage:_____		
	Neutral-Earth voltage:_____		

\* Encircle applicable source

TRANSASIA BIOMEDICALS LIMITED			
IQOQPQ of Erba H560 (Omega Path Lab)			
Instrument Name	H560	SN	K11042133063

b. The instrument has been verified for the following


Sr.No.	Verification	Yes	Verified By
1.	Instrument is identified	Yes	Devender Singh
2.	Manufacturer's specifications are included	Yes	Devender Singh
3.	Accessories / Consumables are listed	Yes	Devender Singh
4.	Manufacturer's certificate of Compliance attached	Yes	Devender Singh

## V. Installation Qualification

### A. Equipment Description

This ERBA H560 is a fully automated five part Hematology analyzer for in vitro diagnostic use in clinical laboratories. The instrument provides accurate and precise test results for (29) parameters including three histograms & one scatter- grams.

Instrument identification		Verified by	Date
Equipment Name	Automated Hematology	Devender Singh	30/8/2022
Model	H560	Devender Singh	30/8/2022
Manufacturer	Erba Mannheim	Devender Singh	30/8/2022
Marketed By	Transasia	Devender	30/8/2022

TRANSASIA BIOMEDICALS LIMITED			
IQOQPQ of Erba H560 (Omega Path Lab)			
Instrument Name	H560	SN	K11042133063

		Singh	
Serial Number	K11042113013	Devender Singh	30/8/2022
Size (in mm)	W 360 X D 410 X H 475	Devender Singh	30/8/2022
Power	AC 220 V	Devender Singh	30/8/2022
Frequency	50 - 60 Hz	Devender Singh	30/8/2022
Power Consumption	Less Than 250 VA	Devender Singh	30/8/2022

#### Installation Qualification

Consumables such as H-Clean, DIL H560, LYSE1 & LYSE2 were supplied along with instrument.

Currently a sufficient stock of the same is being maintained Yes  No

#### b. List of Manuals, Certificates and Drawings

Transasia provides the following with the instrument.

1. Instructions For use
2. User's Guide

#### c. Change Control Procedure

The instrument will not be altered, enhanced, modified or substituted for another system until a formal Change Control Authorization is approved from Transasia Bio-Medicals Ltd. and Aarogya Hospital Delhi.

#### d. Maintenance

The instrument listed within this document will be placed under the control of the purchasing institution with respect to proper maintenance procedures as detailed in the User Manual.

<b>TRANSASIA BIOMEDICALS LIMITED</b>			<b>TRANSASIA<sup>®</sup></b> Bio-Medicals Ltd.
<b>IQOQPQ of Erba H560 (Omega Path Lab)</b>			
<b>Instrument Name</b>	<b>H560</b>	<b>SN</b>	<b>K11042133063</b>

A trained analyst using the manuals provided with the instrumentation can perform simple maintenance. Upon expiration of the warranty period Transasia offers several levels of Maintenance Agreements and Performance Testing services to assist you in maintaining **GLP/GMP** compliance. Contacting your local representative and requesting the additional Service Agreement can supply additional information.

#### **e. Spare Parts**

Transasia strongly recommends the end user maintain a basic of consumable parts onsite to minimize down time due to minor failures. They have provided a list of such consumable parts and the same is also available in the Operator's Manual.

#### **f. Installation Procedure**

(These had been performed at the time of original installation at the initial location)

##### **1. Unpacking Checklist**

Refer to Page-16 of ERBA H560 Instruction For Use

##### **2. Check Before Installation**

Refer to Page-14 of ERBA H560 Instruction For Use

##### **3. Grounding**


Refer to Page-14 of ERBA H560 Instruction For Use

##### **4. Installation Environment & Space**

Refer to Page-14 of ERBA H560 Instruction For Use

**COMMENTS:** NA



TRANSASIA BIOMEDICALS LIMITED			
IQOQPQ of Erba H560 (Omega Path Lab)			
Instrument Name	H560	SN	K11042133063

### VII. System Certification

Study data has determined that the system described in this document either meets all criteria outlined in this independently Installation Qualification Protocol, or exceptional conditions have been identified and documentation included. Exceptional conditions, if any, have been addressed. The system is ready for specified usage.

Report Performed By : Transasia Representative

Name : Devender Singh

Title : INSTALLATION QUALIFICATION Signature : *Devender*

Company: TRANSASIA BIO-MEDICALS LTD. Date :30/8/2022

Customer Authorizations:

Name : Dr. Jyoti Goel

Title : INSTALLATION QUALIFICATION Signature:

Site: Omega Path Lab Date : 30/8/2022

TRANSASIA BIOMEDICALS LIMITED			TRANSASIA <sup>®</sup> Bio-Medicals Ltd.
IQOQPQ of Erba H560 (Omega Path Lab)			
Instrument Name	H560	SN	K11042133063

Date: 30/08/2022

Reagent Check done

Analyzer switched ON at

SELF CHECK performed

RINSE CYCLE completed

Background limits within acceptable range

Analysis start time

Analysis end time

No. of samples analyzed


Shut down procedure done

Analyzer switched OFF at

Recorded by: Devender Singh

Checked by: Devender Singh

*Devender*

TRANSASIA BIOMEDICALS LIMITED			
IQOQPQ of Erba H560 (Omega Path Lab)			
Instrument Name	H560	SN	K11042133063

## OPERATIONAL QUALIFICATION

For

**Omega Path Lab**

**ERBA H560  
AUTOMATED HEMATOLOGY ANALYZER**

Marketed by:  
Transasia Bio-Medicals Ltd.,  
(ISO 13485 CERTIFIED)  
Transasia House,  
Chandivali Studio road,  
Andheri (E),  
MUMBAI - 400 072

<b>TRANSASIA BIOMEDICALS LIMITED</b>			<b>TRANSASIA<sup>®</sup></b> Bio-Medicals Ltd.
<b>IQOQPQ of Erba H560 (Omega Path Lab)</b>			
<b>Instrument Name</b>	<b>H560</b>	<b>SN</b>	<b>K11042133063</b>

## Table of Contents

<b>Sr. No.</b>	<b>Contents</b>
<b>I</b>	<b>Approval of the OQ procedure</b>
<b>II</b>	<b>Instructions</b>
<b>III</b>	<b>Scope</b>
<b>IV</b>	<b>Operational Qualification</b>
<b>V</b>	<b>System Certification</b>



<b>TRANSASIA BIOMEDICALS LIMITED</b>				<b>TRANSASIA<sup>®</sup></b> Bio-Medicals Ltd.
<b>IQOQPQ of Erba H560 (Omega Path Lab)</b>				
<b>Instrument Name</b>	<b>H560</b>	<b>SN</b>	<b>K11042133063</b>	

## II. Instructions

1. The TRANSASIA representative will check each module and enter the specific data as described in the Operational Qualification. Each result will be noted and dated.
2. Any deviations from the acceptance criteria detailed in this document will be noted in the COMMENTS section of the OQ protocol. All resolution to such problems will also be noted in the COMMENTS section, and must be resolved prior to issuance of a SYSTEM CERTIFICATION. This will be an additional cost to the purchasing institution. However this additional cost will be waived when this test is conducted at time of initial performance check of new instruments.
3. Any test data, which does not meet the specified acceptance criteria, will be submitted to the appropriate laboratory personnel for solution. All steps taken subsequently will be documented.
4. This document contains proprietary information and is in no way to be copied, photographed or duplicated in any way without expressed written authorization by the Product Manager at Transasia Bio-Medicals Ltd., Transasia House, Mumbai.

## III. Scope

This Operational Qualification protocol will be performed on the Hematology Analyzer, Model H560, Serial No. K11042133063 located Omega Path Lab Delhi. This Protocol will define the documentation that will be used to evaluate the instruments installation in accordance with the manufacturer's specifications and intended use. Successful completion of this protocol will verify that the instrument identified is performing in accordance with the intended usage.

Trained, knowledgeable personnel will perform qualification studies.

Any exceptional conditions encountered during the qualification studies will be identified for review. Exceptional conditions will be investigated and the appropriate course of action determined. All documents will be initialed and dated.

<b>TRANSASIA BIOMEDICALS LIMITED</b>			<b>TRANSASIA<sup>®</sup></b> Bio-Medicals Ltd.
<b>IQOQPQ of Erba H560 (Omega Path Lab)</b>			
<b>Instrument Name</b>	<b>H560</b>	<b>SN</b>	<b>K11042133063</b>

#### IV. Operational Qualification

##### a. Instrument Identification

1. Model Name                    H560
2. Serial Number                K11042133063

b. Following is a list of tests to be performed and verified and demonstrated to user:

Test No.	Test Name	Test Purpose
1.	Liquid Pump	To verify pressure & vacuum generation
2.	Syringe Assembly	Capacity of Blood Aspiration Diluent Aspiration, Lyse 1& 2 Aspiration
3.	Liquid Sensing PCB	To verify Liquid sensing ability Of sensors


##### c. Operational Testing

###### Test 1

Test Name                    : Liquid Pump.

Purpose                        : To test Liquid Pump

Method                      : Please follow the steps described in Erba H560 "Service Manual"

TRANSASIA BIOMEDICALS LIMITED			
IQOQPQ of Erba H560 (Omega Path Lab)			
Instrument Name	H560	SN	K11042133063

	PARAMETER	PASS	FAIL
Parameter values for verification :	LIQUID PUMP	Passed	

Test 2

Test Name : Syringe Assly

Purpose : To test function

Method : Please follow the steps described in Erba H560 "Service Manual"

	PARAMETER	PASS	FAIL
Parameter values for verification :	Syringe Assly	Passed	

Test 3

Test Name : Liquid sensing PCB

Purpose : To test the liquid sensing operation.

Method : Please follow the steps described in Erba H560 "Service Manual"

	PARAMETER	PASS	FAIL
Parameter values for verification :	Liquid Sensing	Passed	



<b>TRANSASIA BIOMEDICALS LIMITED</b>			<b>TRANSASIA<sup>®</sup></b> Bio-Medicals Ltd.
<b>IQOQPQ of Erba H560 (Omega Path Lab)</b>			
<b>Instrument Name</b>	<b>H560</b>	<b>SN</b>	<b>K11042133063</b>

a. Certificate of Training

1. Technician Training

This certifies that the technicians have received basic user training in the following categories for the system described in this Installation Qualification.

Mr. Ankit Gupta who is certified by Transasia Bio-Medicals Ltd has  
Conducted the training.


Sr.No. Training Program

1. Instrument Setup
2. System Operation
3. Basic Troubleshooting & Maintenance

2. Operator Training

The users responsible for the operation of this instrument will be trained in the proper usage of the system. Training will focus on the basic operation and maintenance of the system. The training of the operators will be documented and the training records will be filed.

COMMENTS: Training has been conducted successfully

TRANSASIA BIOMEDICALS LIMITED			
IQOQPQ of Erba H560 (Omega Path Lab)			
Instrument Name	H560	SN	K11042133063

## VII. System Certification

Study data has determined that the system described in this document either meets all criteria outlined in this Operational Qualification Protocol, or exceptional conditions have been identified and documentation included. Exceptional conditions, if any, have been addressed. The system is ready for specified usage.

Report Performed By : Transasia Representative

Name : Ankit Gupta / Devender Singh

Title : OPERATIONAL QUALIFICATION

Signature : 

Company : TRANSASIA BIO-MEDICALS LTD.

Date : 30/8/2022

Customer Authorizations:


Name : Dr.Jyoti Goel

Title : OPERATIONAL QUALIFICATION

Signature :

Site : Omega Path Lab Faridabad

Date : 30/8/2022

TRANSASIA BIOMEDICALS LIMITED			
IQOQPQ of Erba H560 (Omega Path Lab)			
Instrument Name	H560	SN	K11042133063

**ERBA- H560  
AUTOMATED HEMATOLOGY ANALYZER**

**PERFORMANCE QUALIFICATION**

**For  
Omega Path Lab Delhi**

Marketed by:  
Transasia Bio-Medicals Ltd.,  
(ISO 9002 CERTIFIED)  
Transasia House,  
Chandivali Studio road,  
Andheri (E),  
MUMBAI - 400 072

<b>TRANSASIA BIOMEDICALS LIMITED</b>				<b>TRANSASIA<sup>®</sup></b> Bio-Medicals Ltd.
<b>IQOQPQ of Erba H560 (Omega Path Lab)</b>				
<b>Instrument Name</b>	<b>H560</b>	<b>SN</b>	<b>K11042133063</b>	

### Table of Contents:

<b>Sr. No.</b>	<b>Contents</b>
<b>I</b>	<b>Approval of the PQ procedure</b>
<b>II</b>	<b>Instructions</b>
<b>III</b>	<b>Scope</b>
<b>IV</b>	<b>Performance Qualification</b>
<b>V</b>	<b>System Certification</b>

<b>TRANSASIA BIOMEDICALS LIMITED</b>			<b>TRANSASIA®</b> Bio-Medicals Ltd.
<b>IQQPQ of Erba H560 (Omega Path Lab)</b>			
<b>Instrument Name</b>	<b>H560</b>	<b>SN</b>	<b>K11042133063</b>

I. Approval of the PQ procedure

Both Omega Path Lab Delhi and Transasia are jointly responsible for conducting the Performance Check of the Hematology Analyzer, Model : ERBA – H560, Serial No.K11042133063 in the clinical lab of Omega Path LAB Faridabad as per the attached protocol.

Protocol Performed By: Transasia Representative

Name : Ankit Gupta  
 Title : PERFORMANCE QUALIFICATION  
 Date:30/8/2022  
 Company : TRANSASIA BIO-MEDICALS LTD.

Signature:

Customer Authorizations:

Name : Dr Jyoti Goel  
 Title : PERFORMANCE QUALIFICATION  
 Site : Omega Path Lab  
 Signature:  
 Date:30/8/2022

<b>TRANSASIA BIOMEDICALS LIMITED</b>			<b>TRANSASIA<sup>®</sup></b> Bio-Medicals Ltd.
<b>IQOQPQ of Erba H560 (Omega Path Lab)</b>			
<b>Instrument Name</b>	<b>H560</b>	<b>SN</b>	<b>K11042133063</b>

## II. Instructions

1. An authorized TRANSASIA representative will check for the performance of the instrument and enter the specific data as outlined in the Performance Qualification. Each result will be noted and dated.
2. ALL deviations from the acceptance criteria detailed in this document will be noted in the COMMENTS section at the end of each PQ protocol. All resolution to such problems will also be noted in the COMMENTS section, and must be resolved prior to issuance of a SYSTEM CERTIFICATION. These will be an additional cost to the purchasing institution. However this additional cost will be waived when this test is conducted at time of initial performance check of new instruments.
3. Any test data that does not meet the specified acceptance criteria will be submitted to the appropriate laboratory personnel for solution. All steps taken subsequently will be documented.
4. This document contains proprietary information and is in no way to be copied, photographed or duplicated in any way without expressed written authorization by the Production Manager at Transasia Bio-Medicals Ltd., Transasia House, Mumbai.

## III. Scope

This Performance Qualification protocol will be performed on the Hematology Analyzer, Model ERBA -H560, Serial No K11042133063 located in Omega Path Lab Faridabad. This Protocol will define the documentation that will be used to evaluate the instruments installation in accordance with the manufacture's specifications and intended use. Successful completion of this protocol will verify that the instrument identified is performing in accordance with the intended usage.

Trained, knowledgeable personnel will perform qualification studies.

Any exceptional conditions encountered during the qualification studies will be identified for review. Exceptional conditions will be investigated and the appropriate course of action determined. All documents will be initialed and dated.

<b>TRANSASIA BIOMEDICALS LIMITED</b>			<b>TRANSASIA<sup>®</sup></b> Bio-Medicals Ltd.
<b>IQQQPQ of Erba H560 (Omega Path Lab)</b>			
<b>Instrument Name</b>	<b>H560</b>	<b>SN</b>	<b>K11042133063</b>

#### IV. Performance Qualification

##### a. Instrument Identification

1. Model Name                      ERBA – H560
2. Serial Number                 K11042133063

b. Following is a list of tests to be performed and verified:

Test No.	Test Name	Test Purpose	Result
1	Sample Processing	Ability to process samples	Passed
2	Precision Check	Repeatability Test	Passed
3	QC Run	Accuracy Check	Passed
3	Regular Maintenance	Troubleshooting in routine	Passed

All data analysis of Performance Qualification Attached Separately.

#### V. System Certification

Study data has determined that the system described in this document either meets all criteria outlined in this Performance Qualification Protocol, or exceptional conditions have been identified and documentation included. Exceptional conditions, if any, have been addressed. The system is ready for specified usage.

<b>TRANSASIA BIOMEDICALS LIMITED</b>			<b>TRANSASIA<sup>®</sup></b> Bio-Medicals Ltd.
<b>IQQPQ of Erba H560 (Omega Path Lab)</b>			
<b>Instrument Name</b>	<b>H560</b>	<b>SN</b>	<b>K11042133063</b>

Report Performed By: Transasia Representative

Name : Ankit Gupta

Title : PERFORMANCE QUALIFICATION

Signature:

Company: TRANSASIA BIO-MEDICALS LTD.

Date :30/8/2022

Customer Authorizations:

Name : Dr Jyoti Goel

Title : PERFORMANCE QUALIFICATION

Signature:

Site : Omega Path Lab

Date :30/8/2022



First Name:  
Last Name:  
Gender:  
Diagnosis:

Sample Type:  
Department:  
Patient ID:

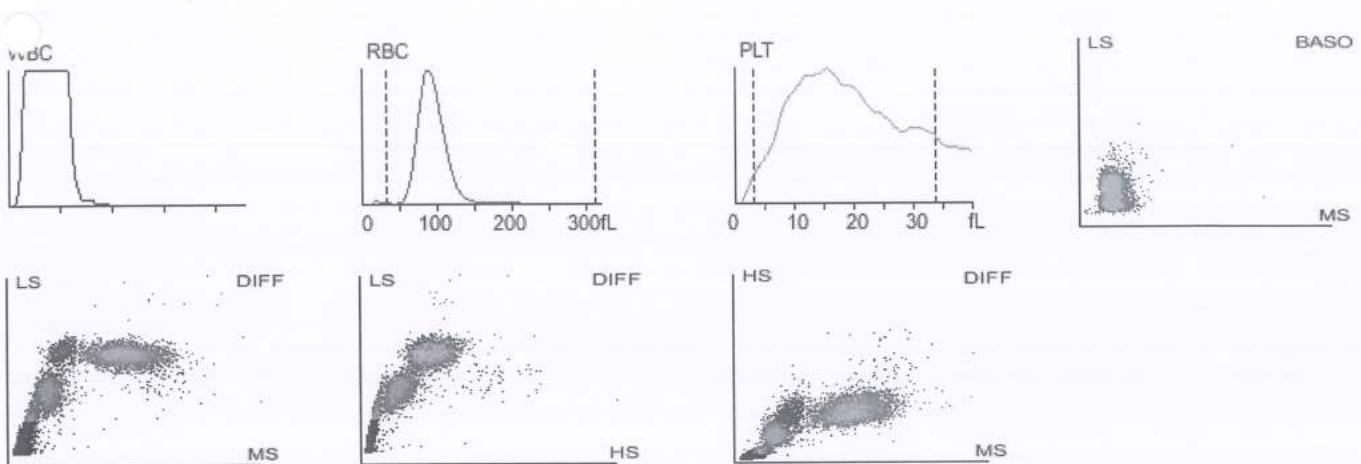
Sample ID: PRE1  
Run Time: 2022/09/10 17:08  
Age:

Parameter	Result	Ref. Range	Unit
1 WBC	8.08	3.50-9.50	10 <sup>3</sup> /uL
2 Neu%	55.2	40.0-75.0	%
3 Lym%	37.5	20.0-50.0	%
4 Mon%	6.4	3.0-10.0	%
5 Eos%	0.7	0.4-8.0	%
6 Bas%	0.2	0.0-1.0	%
7 Neu#	4.45	1.80-6.30	10 <sup>3</sup> /uL
8 Lym#	3.03	1.10-3.20	10 <sup>3</sup> /uL
9 Mon#	0.52	0.10-0.60	10 <sup>3</sup> /uL
10 Eos#	0.06	0.02-0.52	10 <sup>3</sup> /uL
11 Bas#	0.02	0.00-0.06	10 <sup>3</sup> /uL
12 *ALY#	0.05	0.00-0.20	10 <sup>3</sup> /uL
13 *ALY%	0.6	0.0-2.0	%
14 *LIC#	0.01	0.00-0.20	10 <sup>3</sup> /uL
15 *LIC%	0.2	0.0-2.5	%
16 *NRBC#	0.000	0.000-9999.999	10 <sup>3</sup> /uL
17 *NRBC%	0.00	0.00-9999.99	%
18 *cWBC	8.08	3.50-9.50	10 <sup>3</sup> /uL
19 NLR	1.47		
20 RBC	4.44	3.80-5.80	10 <sup>6</sup> /uL
21 HGB	13.3	11.5-17.5	g/dL
22 HCT	42.6	35.0-50.0	%
23 MCV	95.9	82.0-100.0	fL
24 MCH	30.0	27.0-34.0	pg
25 MCHC	31.3	↓ 31.6-35.4	g/dL
26 RDW-CV	14.5	11.0-16.0	%
27 RDW-SD	57.6	↑ 35.0-56.0	fL
28 PLT	156	R 125-350	10 <sup>3</sup> /uL
29 MPV	13.2	R↑ 6.5-12.0	fL
30 PDW-SD	23.0	R↑ 9.0-17.0	fL
31 PDW-CV	16.5	R 10.0-17.9	%
32 PCT	0.206	R 0.108-0.282	%
33 P-LCR	62.1	R↑ 11.0-45.0	%
34 P-LCC	97	R↑ 30-90	10 <sup>3</sup> /uL

WBC Message

RBC Message

PLT Message  
Abn. PLT Distr



\*\*\* means "Research use only, not for diagnostic use".

Submitter: Operator: admin Approver:  
Sampling Time: 2022/09/10 17:08 Delivery Time: 2022/09/10 17:08 Validated Time:  
Report Time: 2022/09/10 17:10 Remarks:

\*The Report is responsible for this sample only. If you have any questions, please contact us in 24 hours.

First Name:  
Last Name:  
Gender:  
Diagnosis:

Sample Type:  
Department:  
Patient ID:

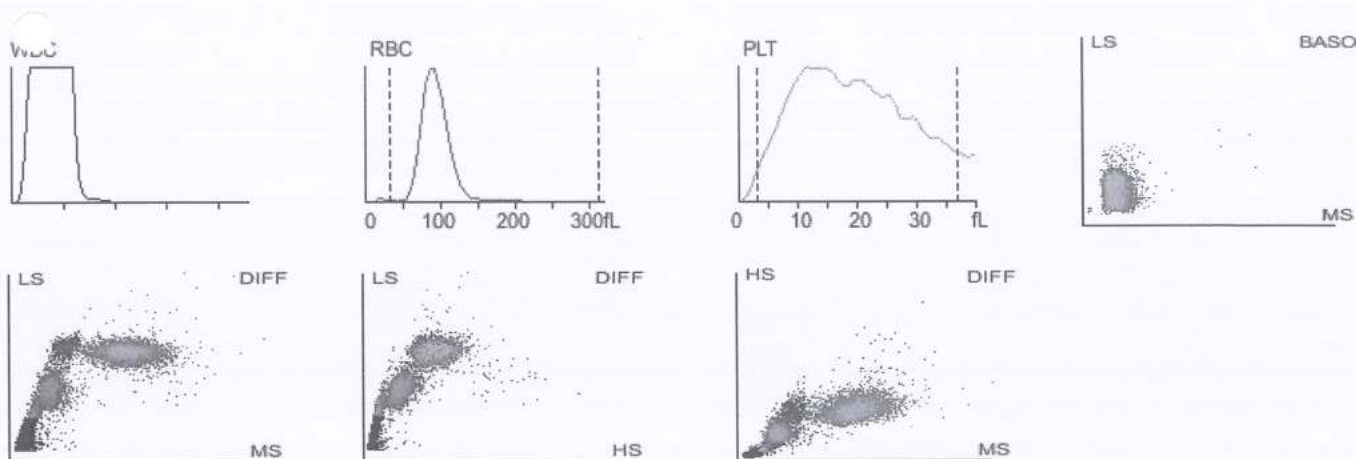
Sample ID: PRE2  
Run Time: 2022/09/10 17:10  
Age:

Parameter	Result	Ref. Range	Unit
1 WBC	8.08	3.50-9.50	10 <sup>3</sup> /uL
2 Neu%	55.6	40.0-75.0	%
3 Lym%	37.8	20.0-50.0	%
4 Mon%	5.9	3.0-10.0	%
5 Eos%	0.5	0.4-8.0	%
6 Bas%	0.2	0.0-1.0	%
7 Neu#	4.49	1.80-6.30	10 <sup>3</sup> /uL
8 Lym#	3.05	1.10-3.20	10 <sup>3</sup> /uL
9 Mon#	0.48	0.10-0.60	10 <sup>3</sup> /uL
10 Eos#	0.04	0.02-0.52	10 <sup>3</sup> /uL
11 Bas#	0.02	0.00-0.06	10 <sup>3</sup> /uL
12*ALY#	0.06	0.00-0.20	10 <sup>3</sup> /uL
13*ALY%	0.7	0.0-2.0	%
14*LIC#	0.03	0.00-0.20	10 <sup>3</sup> /uL
15*LIC%	0.4	0.0-2.5	%
16*NRBC#	0.000	0.000-9999.999	10 <sup>3</sup> /uL
17*NRBC%	0.00	0.00-9999.99	%
18* $\sigma$ WBC	8.08	3.50-9.50	10 <sup>3</sup> /uL
19 $\sigma$ LR	1.47		
20RBC	4.36	3.80-5.80	10 <sup>6</sup> /uL
21HGB	13.2	11.5-17.5	g/dL
22HCT	41.6	35.0-50.0	%
23MCV	95.4	82.0-100.0	fL
24MCH	30.4	27.0-34.0	pg
25MCHC	31.8	31.6-35.4	g/dL
26RDW-CV	14.4	11.0-16.0	%
27RDW-SD	57.1	$\uparrow$ 35.0-56.0	fL
28PLT	171	R 125-350	10 <sup>3</sup> /uL
29MPV	13.8	R $\uparrow$ 6.5-12.0	fL
30PDW-SD	25.5	R $\uparrow$ 9.0-17.0	fL
31PDW-CV	17.9	R 10.0-17.9	%
32PCT	0.237	R 0.108-0.282	%
33P-LCR	63.7	R $\uparrow$ 11.0-45.0	%
34P-LCC	109	R $\uparrow$ 30-90	10 <sup>3</sup> /uL

WBC Message

RBC Message

PLT Message  
Abn. PLT Distr



\*\*\* means "Research use only, not for diagnostic use".

Submitter: Operator: admin Approver:  
Sampling Time: 2022/09/10 17:10 Delivery Time: 2022/09/10 17:10 Validated Time:  
Report Time: 2022/09/10 17:13 Remarks:

\*The Report is responsible for this sample only. If you have any questions, please contact us in 24 hours.

First Name:  
Last Name:  
Gender:  
Diagnosis:

Sample Type:  
Department:  
Patient ID:

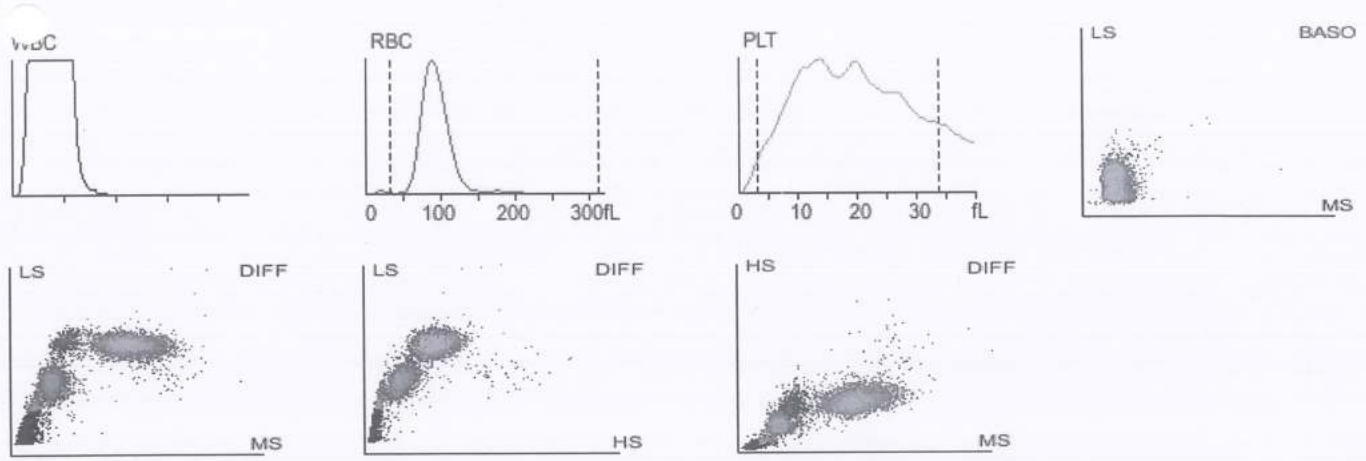
Sample ID: PRE3  
Run Time: 2022/09/10 17:13  
Age:

Parameter	Result	Ref. Range	Unit
1 WBC	7.93	3.50-9.50	10 <sup>3</sup> /uL
2 Neu%	56.3	40.0-75.0	%
3 Lym%	36.8	20.0-50.0	%
4 Mon%	5.8	3.0-10.0	%
5 Eos%	0.7	0.4-8.0	%
6 Bas%	0.4	0.0-1.0	%
7 Neu#	4.46	1.80-6.30	10 <sup>3</sup> /uL
8 Lym#	2.92	1.10-3.20	10 <sup>3</sup> /uL
9 Mon#	0.46	0.10-0.60	10 <sup>3</sup> /uL
10 Eos#	0.06	0.02-0.52	10 <sup>3</sup> /uL
11 Bas#	0.03	0.00-0.06	10 <sup>3</sup> /uL
12 *ALY#	0.06	0.00-0.20	10 <sup>3</sup> /uL
13 *ALY%	0.8	0.0-2.0	%
14 *LIC#	0.01	0.00-0.20	10 <sup>3</sup> /uL
15 *LIC%	0.1	0.0-2.5	%
16 *NRBC#	0.000	0.000-9999.999	10 <sup>3</sup> /uL
17 *NRBC%	0.00	0.00-9999.99	%
18 *cWBC	7.93	3.50-9.50	10 <sup>3</sup> /uL
19 *NLR	1.53		
20 RBC	4.37	3.80-5.80	10 <sup>6</sup> /uL
21 HGB	13.3	11.5-17.5	g/dL
22 HCT	41.8	35.0-50.0	%
23 MCV	95.7	82.0-100.0	fL
24 MCH	30.4	27.0-34.0	pg
25 MCHC	31.8	31.6-35.4	g/dL
26 RDW-CV	14.4	11.0-16.0	%
27 RDW-SD	56.9	↑ 35.0-56.0	fL
28 PLT	151	R 125-350	10 <sup>3</sup> /uL
29 MPV	13.4	R↑ 6.5-12.0	fL
30 PDW-SD	23.7	R↑ 9.0-17.0	fL
31 PDW-CV	17.0	R 10.0-17.9	%
32 PCT	0.202	R 0.108-0.282	%
33 P-LCR	62.8	R↑ 11.0-45.0	%
34 P-LCC	95	R↑ 30-90	10 <sup>3</sup> /uL

**WBC Message**

**RBC Message**

**PLT Message**  
Abn. PLT Distr



\*\*\* means "Research use only, not for diagnostic use".

Submitter: Operator: admin Approver:  
Sampling Time: 2022/09/10 17:13 Delivery Time: 2022/09/10 17:13 Validated Time:  
Report Time: 2022/09/10 17:15 Remarks:

\*The Report is responsible for this sample only. If you have any questions, please contact us in 24 hours.

First Name:  
 Last Name:  
 Gender:  
 Diagnosis:

Sample Type:  
 Department:  
 Patient ID:

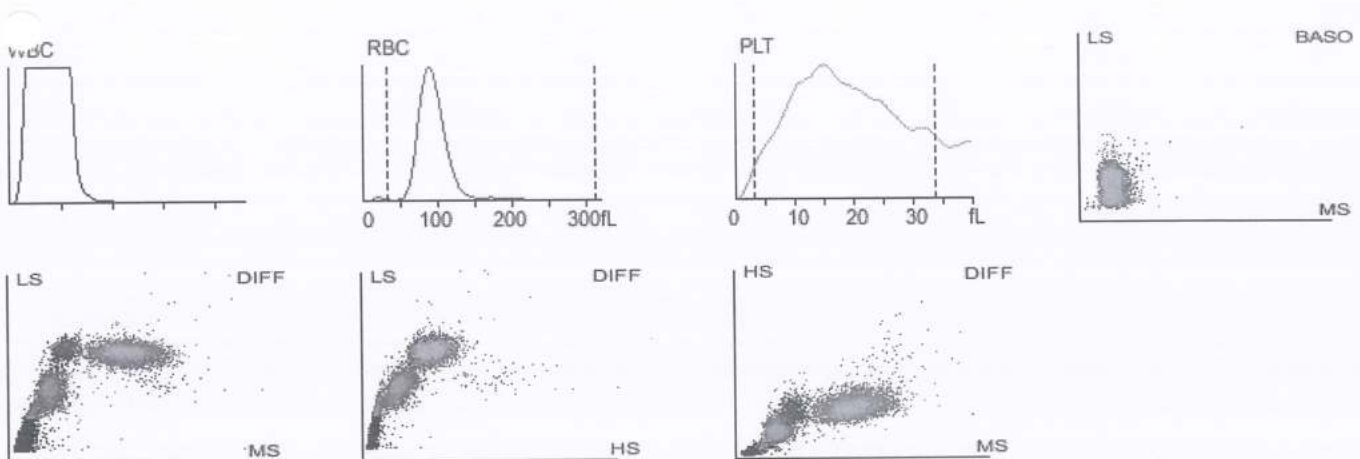
Sample ID: PRE4  
 Run Time: 2022/09/10 17:15  
 Age:

Parameter	Result	Ref. Range	Unit
1 WBC	8.09	3.50-9.50	10 <sup>3</sup> /uL
2 Neu%	56.9	40.0-75.0	%
3 Lym%	35.5	20.0-50.0	%
4 Mon%	6.5	3.0-10.0	%
5 Eos%	0.8	0.4-8.0	%
6 Bas%	0.3	0.0-1.0	%
7 Neu#	4.61	1.80-6.30	10 <sup>3</sup> /uL
8 Lym#	2.87	1.10-3.20	10 <sup>3</sup> /uL
9 Mon#	0.53	0.10-0.60	10 <sup>3</sup> /uL
10 Eos#	0.06	0.02-0.52	10 <sup>3</sup> /uL
11 Bas#	0.02	0.00-0.06	10 <sup>3</sup> /uL
12 *ALY#	0.04	0.00-0.20	10 <sup>3</sup> /uL
13 *ALY%	0.5	0.0-2.0	%
14 *LIC#	0.02	0.00-0.20	10 <sup>3</sup> /uL
15 *LIC%	0.3	0.0-2.5	%
16 *NRBC#	0.000	0.000-9999.999	10 <sup>3</sup> /uL
17 *NRBC%	0.00	0.00-9999.99	%
1^*cWBC	8.09	3.50-9.50	10 <sup>3</sup> /uL
∫ NLR	1.60		
20 RBC	4.38	3.80-5.80	10 <sup>6</sup> /uL
21 HGB	13.2	11.5-17.5	g/dL
22 HCT	42.0	35.0-50.0	%
23 MCV	95.9	82.0-100.0	fL
24 MCH	30.2	27.0-34.0	pg
25 MCHC	31.5	↓ 31.6-35.4	g/dL
26 RDW-CV	14.5	11.0-16.0	%
27 RDW-SD	57.5	↑ 35.0-56.0	fL
28 PLT	153	R 125-350	10 <sup>3</sup> /uL
29 MPV	13.2	R↑ 6.5-12.0	fL
30 PDW-SD	23.1	R↑ 9.0-17.0	fL
31 PDW-CV	16.7	R 10.0-17.9	%
32 PCT	0.202	R 0.108-0.282	%
33 P-LCR	62.4	R↑ 11.0-45.0	%
34 P-LCC	96	R↑ 30-90	10 <sup>3</sup> /uL

**WBC Message**

**RBC Message**

**PLT Message**  
 Abn. PLT Distr



\*\*\* means "Research use only, not for diagnostic use".

Submitter: Operator: admin Approver:  
 Sampling Time: 2022/09/10 17:15 Delivery Time: 2022/09/10 17:15 Validated Time:  
 Report Time: 2022/09/10 17:16 Remarks:

\*The Report is responsible for this sample only. If you have any questions, please contact us in 24 hours.

First Name:  
Last Name:  
Gender:  
Diagnosis:

Sample Type:  
Department:  
Patient ID:

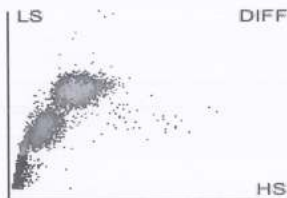
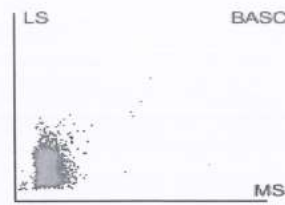
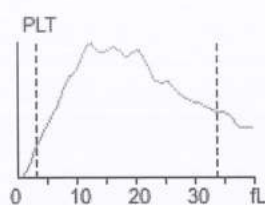
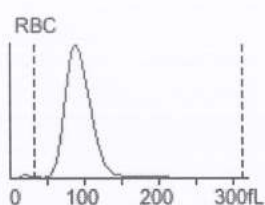
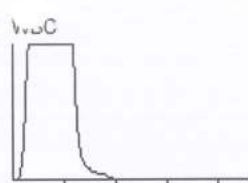
Sample ID: PRE5  
Run Time: 2022/09/10 17:17  
Age:

Parameter	Result	Ref. Range	Unit
1 WBC	8.16	3.50-9.50	10 <sup>3</sup> /uL
2 Neu%	56.1	40.0-75.0	%
3 Lym%	36.6	20.0-50.0	%
4 Mon%	6.6	3.0-10.0	%
5 Eos%	0.5	0.4-8.0	%
6 Bas%	0.2	0.0-1.0	%
7 Neu#	4.57	1.80-6.30	10 <sup>3</sup> /uL
8 Lym#	2.99	1.10-3.20	10 <sup>3</sup> /uL
9 Mon#	0.54	0.10-0.60	10 <sup>3</sup> /uL
10 Eos#	0.04	0.02-0.52	10 <sup>3</sup> /uL
11 Bas#	0.02	0.00-0.06	10 <sup>3</sup> /uL
12 *ALY#	0.03	0.00-0.20	10 <sup>3</sup> /uL
13 *ALY%	0.4	0.0-2.0	%
14 *LIC#	0.01	0.00-0.20	10 <sup>3</sup> /uL
15 *LIC%	0.1	0.0-2.5	%
16 *NRBC#	0.000	0.000-9999.999	10 <sup>3</sup> /uL
17 *NRBC%	0.00	0.00-9999.99	%
1 <sup>o</sup> *cWBC	8.16	3.50-9.50	10 <sup>3</sup> /uL
1 <sup>o</sup> *NLR	1.53		
20 RBC	4.38	3.80-5.80	10 <sup>6</sup> /uL
21 HGB	13.3	11.5-17.5	g/dL
22 HCT	41.9	35.0-50.0	%
23 MCV	95.7	82.0-100.0	fL
24 MCH	30.3	27.0-34.0	pg
25 MCHC	31.7	31.6-35.4	g/dL
26 RDW-CV	14.3	11.0-16.0	%
27 RDW-SD	56.9	↑ 35.0-56.0	fL
28 PLT	156	R 125-350	10 <sup>3</sup> /uL
29 MPV	13.2	R↑ 6.5-12.0	fL
30 PDW-SD	23.2	R↑ 9.0-17.0	fL
31 PDW-CV	16.7	R 10.0-17.9	%
32 PCT	0.207	R 0.108-0.282	%
33 P-LCR	62.6	R↑ 11.0-45.0	%
34 P-LCC	98	R↑ 30-90	10 <sup>3</sup> /uL

WBC Message

RBC Message

PLT Message  
Abn. PLT Distr



\*\*\* means "Research use only, not for diagnostic use".

Submitter: Operator: admin Approver:  
Sampling Time: 2022/09/10 17:17 Delivery Time: 2022/09/10 17:17 Validated Time:  
Report Time: 2022/09/10 17:18 Remarks:

\*The Report is responsible for this sample only. If you have any questions, please contact us in 24 hours.

First Name:  
Last Name:  
Gender:  
Diagnosis:

Sample Type:  
Department:  
Patient ID:

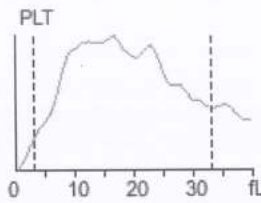
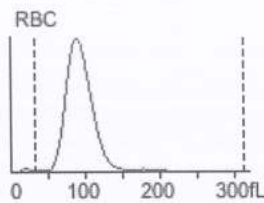
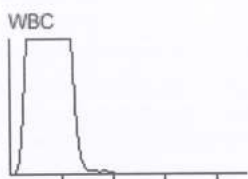
Sample ID: PRE6  
Run Time: 2022/09/10 17:18  
Age:

Parameter	Result	Ref. Range	Unit
1 WBC	8.18	3.50-9.50	10 <sup>3</sup> /uL
2 Neu%	56.0	40.0-75.0	%
3 Lym%	36.5	20.0-50.0	%
4 Mon%	6.8	3.0-10.0	%
5 Eos%	0.5	0.4-8.0	%
6 Bas%	0.2	0.0-1.0	%
7 Neu#	4.57	1.80-6.30	10 <sup>3</sup> /uL
8 Lym#	2.99	1.10-3.20	10 <sup>3</sup> /uL
9 Mon#	0.56	0.10-0.60	10 <sup>3</sup> /uL
10 Eos#	0.04	0.02-0.52	10 <sup>3</sup> /uL
11 Bas#	0.02	0.00-0.06	10 <sup>3</sup> /uL
12 *ALY#	0.05	0.00-0.20	10 <sup>3</sup> /uL
13 *ALY%	0.6	0.0-2.0	%
14 *LIC#	0.02	0.00-0.20	10 <sup>3</sup> /uL
15 *LIC%	0.2	0.0-2.5	%
16 *NRBC#	0.000	0.000-9999.999	10 <sup>3</sup> /uL
17 *NRBC%	0.00	0.00-9999.99	%
18 *cWBC	8.18	3.50-9.50	10 <sup>3</sup> /uL
19 *NLR	1.53		
20 RBC	4.43	3.80-5.80	10 <sup>6</sup> /uL
21 HGB	13.4	11.5-17.5	g/dL
22 HCT	42.4	35.0-50.0	%
23 MCV	95.7	82.0-100.0	fL
24 MCH	30.2	27.0-34.0	pg
25 MCHC	31.5	↓ 31.6-35.4	g/dL
26 RDW-CV	14.4	11.0-16.0	%
27 RDW-SD	57.1	↑ 35.0-56.0	fL
28 PLT	153	R 125-350	10 <sup>3</sup> /uL
29 MPV	13.0	R↑ 6.5-12.0	fL
30 PDW-SD	22.6	R↑ 9.0-17.0	fL
31 PDW-CV	16.5	R 10.0-17.9	%
32 PCT	0.199	R 0.108-0.282	%
33 P-LCR	61.7	R↑ 11.0-45.0	%
34 P-LCC	94	R↑ 30-90	10 <sup>3</sup> /uL

WBC Message

RBC Message

PLT Message  
Abn. PLT Distr



\*\*\* means "Research use only, not for diagnostic use".

Submitter: Operator: admin Approver:  
Sampling Time: 2022/09/10 17:18 Delivery Time: 2022/09/10 17:18 Validated Time:  
Report Time: 2022/09/10 17:20 Remarks:

\*The Report is responsible for this sample only. If you have any questions, please contact us in 24 hours.

First Name:  
Last Name:  
Gender:  
Diagnosis:

Sample Type:  
Department:  
Patient ID:

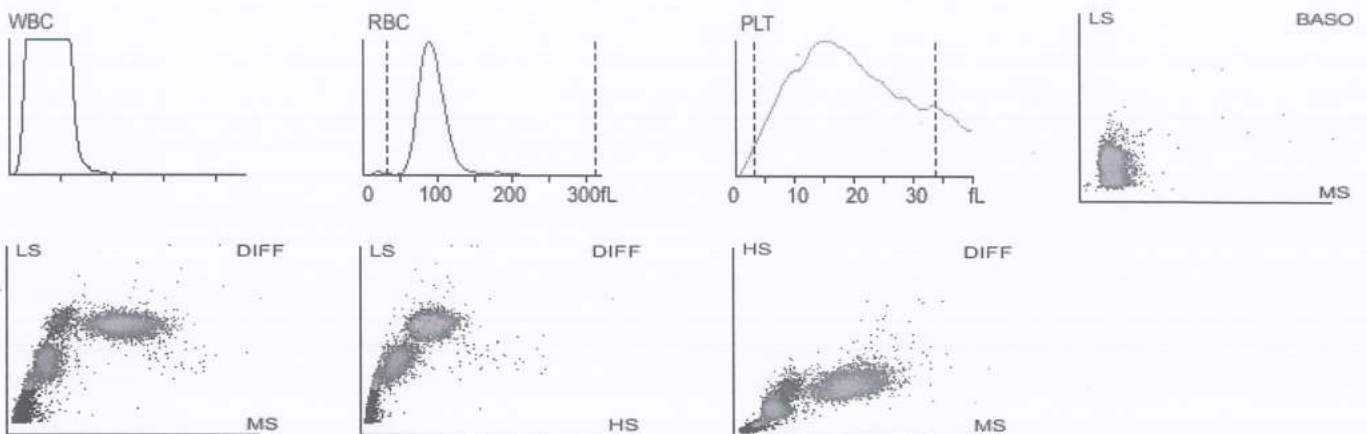
Sample ID: PRE7  
Run Time: 2022/09/10 17:20  
Age:

Parameter	Result	Ref. Range	Unit
1 WBC	8.28	3.50-9.50	10 <sup>3</sup> /uL
2 Neu%	55.5	40.0-75.0	%
3 Lym%	37.5	20.0-50.0	%
4 Mon%	6.2	3.0-10.0	%
5 Eos%	0.5	0.4-8.0	%
6 Bas%	0.3	0.0-1.0	%
7 Neu#	4.60	1.80-6.30	10 <sup>3</sup> /uL
8 Lym#	3.11	1.10-3.20	10 <sup>3</sup> /uL
9 Mon#	0.51	0.10-0.60	10 <sup>3</sup> /uL
10 Eos#	0.04	0.02-0.52	10 <sup>3</sup> /uL
11 Bas#	0.02	0.00-0.06	10 <sup>3</sup> /uL
12*ALY#	0.04	0.00-0.20	10 <sup>3</sup> /uL
13*ALY%	0.5	0.0-2.0	%
14*LIC#	0.03	0.00-0.20	10 <sup>3</sup> /uL
15*LIC%	0.3	0.0-2.5	%
16*NRBC#	0.000	0.000-9999.999	10 <sup>3</sup> /uL
17*NRBC%	0.00	0.00-9999.99	%
18*cWBC	8.28	3.50-9.50	10 <sup>3</sup> /uL
19*NLR	1.48		
20RBC	4.37	3.80-5.80	10 <sup>6</sup> /uL
21HGB	13.3	11.5-17.5	g/dL
22HCT	41.8	35.0-50.0	%
23MCV	95.7	82.0-100.0	fL
24MCH	30.5	27.0-34.0	pg
25MCHC	31.8	31.6-35.4	g/dL
26RDW-CV	14.5	11.0-16.0	%
27RDW-SD	57.4	↑ 35.0-56.0	fL
28PLT	157	R 125-350	10 <sup>3</sup> /uL
29MPV	13.2	R↑ 6.5-12.0	fL
30PDW-SD	23.2	R↑ 9.0-17.0	fL
31PDW-CV	16.7	R 10.0-17.9	%
32PCT	0.208	R 0.108-0.282	%
33P-LCR	62.8	R↑ 11.0-45.0	%
34P-LCC	99	R↑ 30-90	10 <sup>3</sup> /uL

**WBC Message**

**RBC Message**

**PLT Message**  
Abn. PLT Distr



\*\*\* means "Research use only, not for diagnostic use".

Submitter: Operator: admin Approver:  
Sampling Time: 2022/09/10 17:20 Delivery Time: 2022/09/10 17:20 Validated Time:  
Report Time: 2022/09/10 17:21 Remarks:

\*The Report is responsible for this sample only. If you have any questions, please contact us in 24 hours.

First Name:  
Last Name:  
Gender:  
Diagnosis:

Sample Type:  
Department:  
Patient ID:

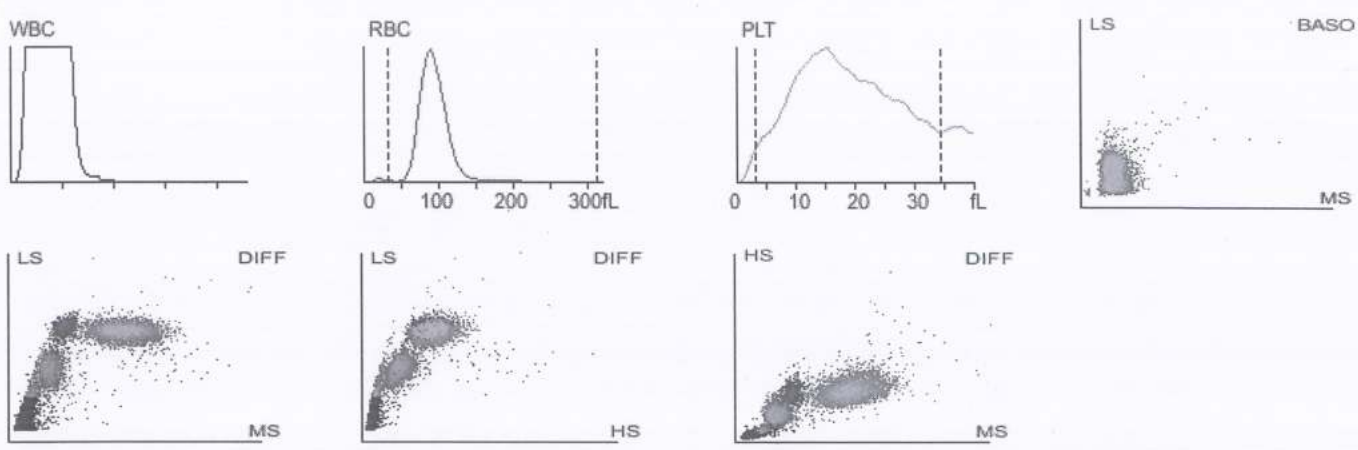
Sample ID: PRE8  
Run Time: 2022/09/10 17:22  
Age:

Parameter	Result	Ref. Range	Unit
1 WBC	8.17	3.50-9.50	10 <sup>3</sup> /uL
2 Neu%	55.3	40.0-75.0	%
3 Lym%	37.6	20.0-50.0	%
4 Mon%	6.3	3.0-10.0	%
5 Eos%	0.5	0.4-8.0	%
6 Bas%	0.3	0.0-1.0	%
7 Neu#	4.53	1.80-6.30	10 <sup>3</sup> /uL
8 Lym#	3.07	1.10-3.20	10 <sup>3</sup> /uL
9 Mon#	0.51	0.10-0.60	10 <sup>3</sup> /uL
10 Eos#	0.04	0.02-0.52	10 <sup>3</sup> /uL
11 Bas#	0.02	0.00-0.06	10 <sup>3</sup> /uL
12 *ALY#	0.03	0.00-0.20	10 <sup>3</sup> /uL
13 *ALY%	0.4	0.0-2.0	%
14 *LIC#	0.02	0.00-0.20	10 <sup>3</sup> /uL
15 *LIC%	0.3	0.0-2.5	%
16 *NRBC#	0.000	0.000-9999.999	10 <sup>3</sup> /uL
17 *NRBC%	0.00	0.00-9999.99	%
18 *cWBC	8.17	3.50-9.50	10 <sup>3</sup> /uL
19 *NLR	1.47		
20 RBC	4.42	3.80-5.80	10 <sup>6</sup> /uL
21 HGB	13.3	11.5-17.5	g/dL
22 HCT	42.3	35.0-50.0	%
23 MCV	95.8	82.0-100.0	fL
24 MCH	30.1	27.0-34.0	pg
25 MCHC	31.4	↓ 31.6-35.4	g/dL
26 RDW-CV	14.5	11.0-16.0	%
27 RDW-SD	57.5	↑ 35.0-56.0	fL
28 PLT	157	R 125-350	10 <sup>3</sup> /uL
29 MPV	13.3	R↑ 6.5-12.0	fL
30 PDW-SD	22.6	R↑ 9.0-17.0	fL
31 PDW-CV	16.1	R 10.0-17.9	%
32 PCT	0.209	R 0.108-0.282	%
33 P-LCR	62.9	R↑ 11.0-45.0	%
34 P-LCC	98	R↑ 30-90	10 <sup>3</sup> /uL

WBC Message

RBC Message

PLT Message  
Abn. PLT Distr



\*\*\* means "Research use only, not for diagnostic use".

Submitter: Operator: admin Approver:  
Sampling Time: 2022/09/10 17:22 Delivery Time: 2022/09/10 17:22 Validated Time:  
Report Time: 2022/09/10 17:24 Remarks:

\*The Report is responsible for this sample only. If you have any questions, please contact us in 24 hours.



First Name:  
Last Name:  
Gender:  
Diagnosis:

Sample Type:  
Department:  
Patient ID:

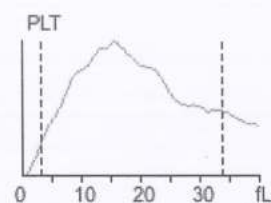
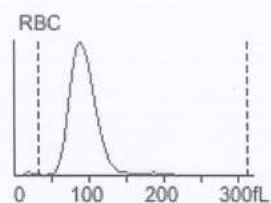
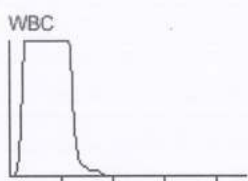
Sample ID: PRE9  
Run Time: 2022/09/10 17:24  
Age:

Parameter	Result	Ref. Range	Unit
1 WBC	8.07	3.50-9.50	10 <sup>3</sup> /uL
2 Neu%	56.2	40.0-75.0	%
3 Lym%	36.9	20.0-50.0	%
4 Mon%	6.1	3.0-10.0	%
5 Eos%	0.6	0.4-8.0	%
6 Bas%	0.2	0.0-1.0	%
7 Neu#	4.53	1.80-6.30	10 <sup>3</sup> /uL
8 Lym#	2.98	1.10-3.20	10 <sup>3</sup> /uL
9 Mon#	0.49	0.10-0.60	10 <sup>3</sup> /uL
10 Eos#	0.05	0.02-0.52	10 <sup>3</sup> /uL
11 Bas#	0.02	0.00-0.06	10 <sup>3</sup> /uL
12 *ALY#	0.04	0.00-0.20	10 <sup>3</sup> /uL
13 *ALY%	0.5	0.0-2.0	%
14 *LIC#	0.03	0.00-0.20	10 <sup>3</sup> /uL
15 *LIC%	0.3	0.0-2.5	%
16 *NRBC#	0.000	0.000-9999.999	10 <sup>3</sup> /uL
17 *NRBC%	0.00	0.00-9999.99	%
18 *cWBC	8.07	3.50-9.50	10 <sup>3</sup> /uL
19 *NLR	1.53		
20 RBC	4.41	3.80-5.80	10 <sup>6</sup> /uL
21 HGB	13.3	11.5-17.5	g/dL
22 HCT	42.3	35.0-50.0	%
23 MCV	95.8	82.0-100.0	fL
24 MCH	30.2	27.0-34.0	pg
25 MCHC	31.5	↓ 31.6-35.4	g/dL
26 RDW-CV	14.4	11.0-16.0	%
27 RDW-SD	57.1	↑ 35.0-56.0	fL
28 PLT	152	R 125-350	10 <sup>3</sup> /uL
29 MPV	13.1	R↑ 6.5-12.0	fL
30 PDW-SD	23.5	R↑ 9.0-17.0	fL
31 PDW-CV	17.2	R 10.0-17.9	%
32 PCT	0.198	R 0.108-0.282	%
33 P-LCR	61.7	R↑ 11.0-45.0	%
34 P-LCC	94	R↑ 30-90	10 <sup>3</sup> /uL

WBC Message

RBC Message

PLT Message  
Abn. PLT Distr



\*\*\* means "Research use only, not for diagnostic use".

Submitter: Operator: admin Approver:  
Sampling Time: 2022/09/10 17:24 Delivery Time: 2022/09/10 17:24 Validated Time:  
Report Time: 2022/09/10 17:26 Remarks:

\*The Report is responsible for this sample only. If you have any questions, please contact us in 24 hours.

First Name:  
Last Name:  
Gender:  
Diagnosis:

Sample Type:  
Department:  
Patient ID:

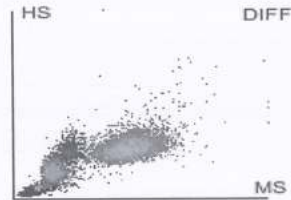
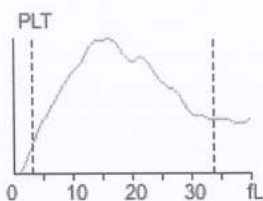
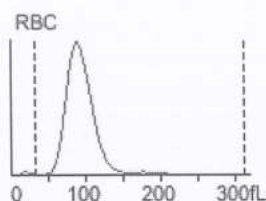
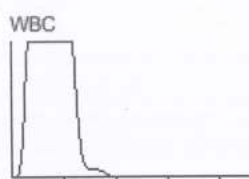
Sample ID: PR10  
Run Time: 2022/09/10 17:26  
Age:

Parameter	Result	Ref. Range	Unit
1 WBC	8.15	3.50-9.50	10 <sup>3</sup> /uL
2 Neu%	54.9	40.0-75.0	%
3 Lym%	37.6	20.0-50.0	%
4 Mon%	6.4	3.0-10.0	%
5 Eos%	0.7	0.4-8.0	%
6 Bas%	0.4	0.0-1.0	%
7 Neu#	4.48	1.80-6.30	10 <sup>3</sup> /uL
8 Lym#	3.06	1.10-3.20	10 <sup>3</sup> /uL
9 Mon#	0.52	0.10-0.60	10 <sup>3</sup> /uL
10 Eos#	0.06	0.02-0.52	10 <sup>3</sup> /uL
11 Bas#	0.03	0.00-0.06	10 <sup>3</sup> /uL
12*ALY#	0.04	0.00-0.20	10 <sup>3</sup> /uL
13*ALY%	0.5	0.0-2.0	%
14*LIC#	0.02	0.00-0.20	10 <sup>3</sup> /uL
15*LIC%	0.2	0.0-2.5	%
16*NRBC#	0.000	0.000-9999.999	10 <sup>3</sup> /uL
17*NRBC%	0.00	0.00-9999.99	%
18*cWBC	8.15	3.50-9.50	10 <sup>3</sup> /uL
19*NLR	1.46		
20RBC	4.42	3.80-5.80	10 <sup>6</sup> /uL
21HGB	13.3	11.5-17.5	g/dL
22HCT	42.3	35.0-50.0	%
23MCV	95.8	82.0-100.0	fL
24MCH	30.1	27.0-34.0	pg
25MCHC	31.4	↓ 31.6-35.4	g/dL
26RDW-CV	14.4	11.0-16.0	%
27RDW-SD	57.3	↑ 35.0-56.0	fL
28PLT	156	R 125-350	10 <sup>3</sup> /uL
29MPV	13.1	R↑ 6.5-12.0	fL
30PDW-SD	22.6	R↑ 9.0-17.0	fL
31PDW-CV	16.4	R 10.0-17.9	%
32PCT	0.205	R 0.108-0.282	%
33P-LCR	62.8	R↑ 11.0-45.0	%
34P-LCC	98	R↑ 30-90	10 <sup>3</sup> /uL

WBC Message

RBC Message

PLT Message  
Abn. PLT Distr



\*\*\* means "Research use only, not for diagnostic use".

Submitter: Operator: admin Approver:  
Sampling Time: 2022/09/10 17:26 Delivery Time: 2022/09/10 17:26 Validated Time:  
Report Time: 2022/09/10 17:27 Remarks:

\*The Report is responsible for this sample only. If you have any questions, please contact us in 24 hours.

First Name:  
Last Name:  
Gender:  
Diagnosis:

Sample Type:  
Department:  
Patient ID:

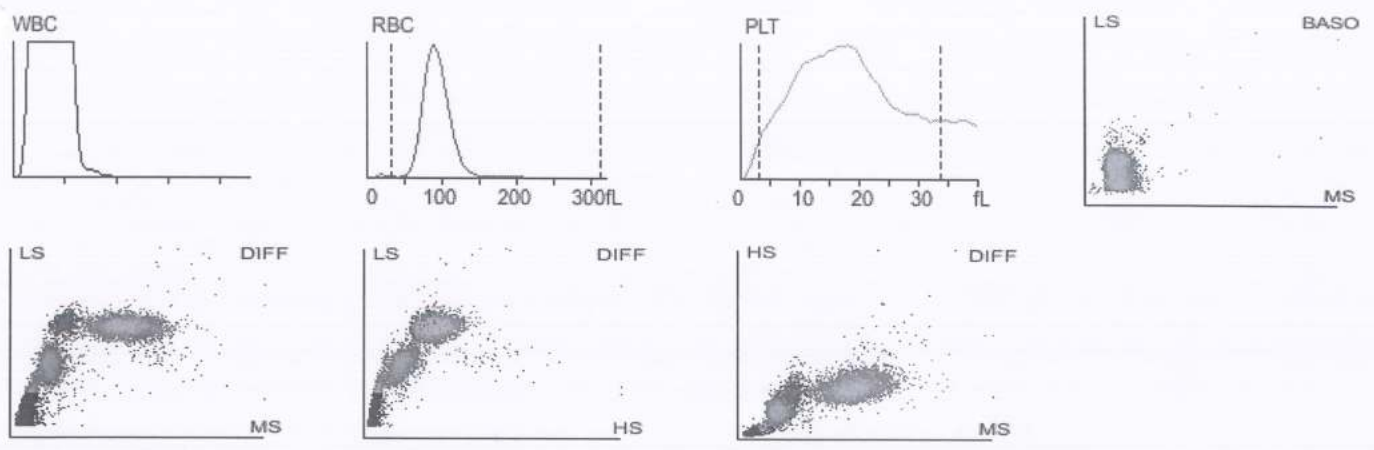
Sample ID: PR11  
Run Time: 2022/09/10 17:28  
Age:

Parameter	Result	Ref. Range	Unit
1 WBC	8.18	3.50-9.50	10 <sup>3</sup> /uL
2 Neu%	54.4	40.0-75.0	%
3 Lym%	37.7	20.0-50.0	%
4 Mon%	6.9	3.0-10.0	%
5 Eos%	0.7	0.4-8.0	%
6 Bas%	0.3	0.0-1.0	%
7 Neu#	4.46	1.80-6.30	10 <sup>3</sup> /uL
8 Lym#	3.08	1.10-3.20	10 <sup>3</sup> /uL
9 Mon#	0.56	0.10-0.60	10 <sup>3</sup> /uL
10 Eos#	0.06	0.02-0.52	10 <sup>3</sup> /uL
11 Bas#	0.02	0.00-0.06	10 <sup>3</sup> /uL
12 *ALY#	0.05	0.00-0.20	10 <sup>3</sup> /uL
13 *ALY%	0.6	0.0-2.0	%
14 *LIC#	0.03	0.00-0.20	10 <sup>3</sup> /uL
15 *LIC%	0.3	0.0-2.5	%
16 *NRBC#	0.000	0.000-9999.999	10 <sup>3</sup> /uL
17 *NRBC%	0.00	0.00-9999.99	%
18 *cWBC	8.18	3.50-9.50	10 <sup>3</sup> /uL
19 *NLR	1.44		
20 RBC	4.41	3.80-5.80	10 <sup>6</sup> /uL
21 HGB	13.3	11.5-17.5	g/dL
22 HCT	42.2	35.0-50.0	%
23 MCV	95.7	82.0-100.0	fL
24 MCH	30.2	27.0-34.0	pg
25 MCHC	31.5	↓ 31.6-35.4	g/dL
26 RDW-CV	14.5	R 11.0-16.0	%
27 RDW-SD	57.4	↑ 35.0-56.0	fL
28 PLT	154	R 125-350	10 <sup>3</sup> /uL
29 MPV	12.9	R↑ 6.5-12.0	fL
30 PDW-SD	23.1	R↓ 9.0-17.0	fL
31 PDW-CV	17.2	R 10.0-17.9	%
32 PCT	0.198	R 0.108-0.282	%
33 P-LCR	61.1	R↑ 11.0-45.0	%
34 P-LCC	94	R↑ 30-90	10 <sup>3</sup> /uL

**WBC Message**

**RBC Message**

**PLT Message**  
Abn. PLT Distr



\*\*\* means "Research use only, not for diagnostic use".

Submitter: Operator: admin Approver:  
Sampling Time: 2022/09/10 17:28 Delivery Time: 2022/09/10 17:28 Validated Time:  
Report Time: 2022/09/10 17:31 Remarks:

\*The Report is responsible for this sample only. If you have any questions, please contact us in 24 hours.

First Name:  
Last Name:  
Gender:  
Diagnosis:

Sample Type:  
Department:  
Patient ID:

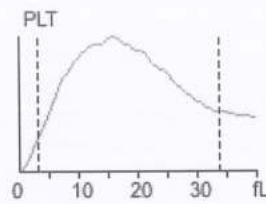
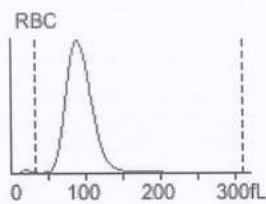
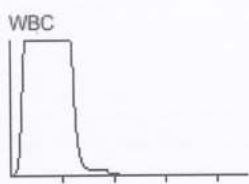
Sample ID: PRE12  
Run Time: 2022/09/10 17:32  
Age:

Parameter	Result	Ref. Range	Unit
1 WBC	8.24	3.50-9.50	10 <sup>3</sup> /uL
2 Neu%	55.5	40.0-75.0	%
3 Lym%	37.0	20.0-50.0	%
4 Mon%	6.7	3.0-10.0	%
5 Eos%	0.5	0.4-8.0	%
6 Bas%	0.3	0.0-1.0	%
7 Neu#	4.58	1.80-6.30	10 <sup>3</sup> /uL
8 Lym#	3.05	1.10-3.20	10 <sup>3</sup> /uL
9 Mon#	0.55	0.10-0.60	10 <sup>3</sup> /uL
10 Eos#	0.04	0.02-0.52	10 <sup>3</sup> /uL
11 Bas#	0.02	0.00-0.06	10 <sup>3</sup> /uL
12*ALY#	0.04	0.00-0.20	10 <sup>3</sup> /uL
13*ALY%	0.5	0.0-2.0	%
14*LIC#	0.03	0.00-0.20	10 <sup>3</sup> /uL
15*LIC%	0.3	0.0-2.5	%
16*NRBC#	0.000	0.000-9999.999	10 <sup>3</sup> /uL
17*NRBC%	0.00	0.00-9999.99	%
18*cWBC	8.24	3.50-9.50	10 <sup>3</sup> /uL
19*NLR	1.50		
20 RBC	4.40	3.80-5.80	10 <sup>6</sup> /uL
21 HGB	13.3	11.5-17.5	g/dL
22 HCT	42.1	35.0-50.0	%
23 MCV	95.5	82.0-100.0	fL
24 MCH	30.2	27.0-34.0	pg
25 MCHC	31.6	31.6-35.4	g/dL
26 RDW-CV	14.4	11.0-16.0	%
27 RDW-SD	57.1	↑ 35.0-56.0	fL
28 PLT	155	R 125-350	10 <sup>3</sup> /uL
29 MPV	13.0	R↑ 6.5-12.0	fL
30 PDW-SD	23.4	R↑ 9.0-17.0	fL
31 PDW-CV	17.3	R 10.0-17.9	%
32 PCT	0.202	R 0.108-0.282	%
33 P-LCR	61.6	R↑ 11.0-45.0	%
34 P-LCC	95	R↑ 30-90	10 <sup>3</sup> /uL

WBC Message

RBC Message

PLT Message  
Abn. PLT Distr



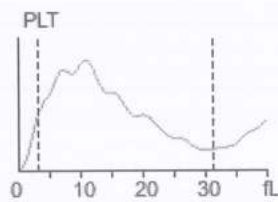
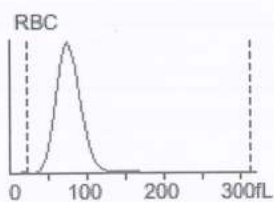
\*\*\* means "Research use only, not for diagnostic use".

Submitter: Operator: admin Approver:  
Sampling Time: 2022/09/10 17:32 Delivery Time: 2022/09/10 17:32 Validated Time:  
Report Time: 2022/09/10 17:34 Remarks:

\*The Report is responsible for this sample only. If you have any questions, please contact us in 24 hours.

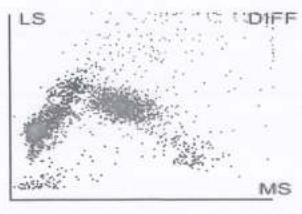
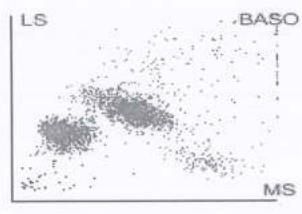
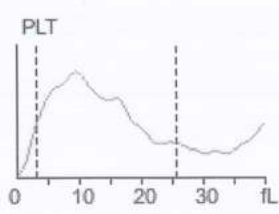
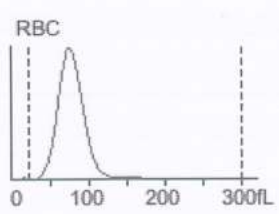
File No.: 1 Lot No.: EH2209L Level: Low  
 Operator: admin Exp. Date: 2022/11/10 Run Time: 2022/09/10 16:41  
 Print Time: 2022/09/10 16:42 QC Mode: Whole Blood-CBC+DIFF QC Sample ID:

Parameter	Result	Ref. Range	Unit
1 WBC	3.49	3.10-4.10	10 <sup>3</sup> /uL
2 Neu%	50.1	42.1-60.1	%
3 Lym%	39.8	29.8-47.8	%
4 Mon%	4.8	1.1-9.1	%
5 Eos%	5.3	0.0-10.0	%
6 Bas%	3.7	0.0-9.2	%
7 Neu#	1.75	1.44-2.24	10 <sup>3</sup> /uL
8 Lym#	1.39	1.00-1.80	10 <sup>3</sup> /uL
9 Mon#	0.17	0.04-0.32	10 <sup>3</sup> /uL
10 Eos#	0.18	0.03-0.33	10 <sup>3</sup> /uL
11 Bas#	0.13	0.00-0.34	10 <sup>3</sup> /uL
12 RBC	2.37	2.20-2.56	10 <sup>6</sup> /uL
13 HGB	5.8	5.5-6.3	g/dL
14 HCT	18.6	16.3-20.3	%
15 MCV	78.5	72.0-82.0	fL
16 MCH	24.3	22.2-27.2	pg
17 MCHC	31.0	29.8-35.8	g/dL
18 RDW-CV	16.2	13.6-19.6	%
19 RDW-SD	53.5	43.2-63.2	fL
20 PLT	71	42-82	10 <sup>3</sup> /uL
21 MPV	10.1	6.5-12.5	fL
22 PDW-SD	15.6	11.9-17.9	fL
23 PDW-CV	17.5	14.1-20.1	%
24 PCT	0.072	0.010-0.110	%
25 P-LCR	39.1	27.4-43.4	%
26 P-LCC	28	7-37	10 <sup>3</sup> /uL



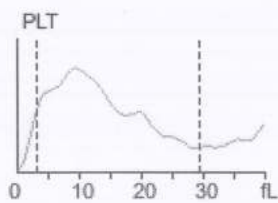
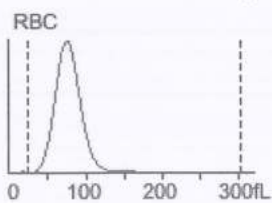
File No.: 1 Lot No.: EH2209L Level: Low  
 Operator: admin Exp. Date: 2022/11/10 Run Time: 2022/09/10 16:39  
 Print Time: 2022/09/10 16:41 QC Mode: Whole Blood-CBC+DIFF QC Sample ID:

Parameter	Result	Ref. Range	Unit
1 WBC	3.34	3.10-4.10	10 <sup>3</sup> /uL
2 Neu%	49.0	42.1-60.1	%
3 Lym%	41.9	29.8-47.8	%
4 Mon%	5.5	1.1-9.1	%
5 Eos%	3.6	0.0-10.0	%
6 Bas%	3.0	0.0-9.2	%
7 Neu#	1.64	1.44-2.24	10 <sup>3</sup> /uL
8 Lym#	1.40	1.00-1.80	10 <sup>3</sup> /uL
9 Mon#	0.18	0.04-0.32	10 <sup>3</sup> /uL
10 Eos#	0.12	0.03-0.33	10 <sup>3</sup> /uL
11 Bas#	0.10	0.00-0.34	10 <sup>3</sup> /uL
12 RBC	2.36	2.20-2.56	10 <sup>6</sup> /uL
13 HGB	5.8	5.5-6.3	g/dL
14 HCT	18.5	16.3-20.3	%
15 MCV	78.5	72.0-82.0	fL
16 MCH	24.5	22.2-27.2	pg
17 MCHC	31.1	29.8-35.8	g/dL
18 RDW-CV	16.5	13.6-19.6	%
19 RDW-SD	54.4	43.2-63.2	fL
20 PLT	63	42-82	10 <sup>3</sup> /uL
2 MPV	9.1	6.5-12.5	fL
22 PDW-SD	14.6	11.9-17.9	fL
23 PDW-CV	17.1	14.1-20.1	%
24 PCT	0.057	0.010-0.110	%
25 P-LCR	33.9	27.4-43.4	%
26 P-LCC	21	7-37	10 <sup>3</sup> /uL



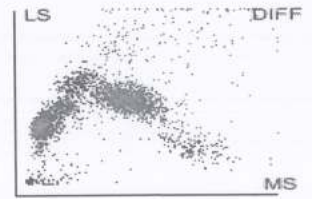
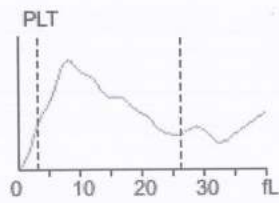
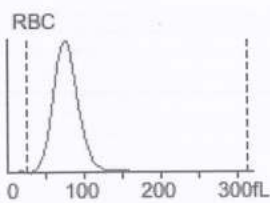
File No.: 1 Lot No.: EH2209L Level: Low  
 Operator: admin Exp. Date: 2022/11/10 Run Time: 2022/09/10 16:37  
 Print Time: 2022/09/10 16:39 QC Mode: Whole Blood-CBC+DIFF QC Sample ID:

Parameter	Result	Ref. Range	Unit
1 WBC	3.49	3.10-4.10	10 <sup>3</sup> /uL
2 Neu%	48.5	42.1-60.1	%
3 Lym%	41.1	29.8-47.8	%
4 Mon%	5.3	1.1-9.1	%
5 Eos%	5.1	0.0-10.0	%
6 Bas%	3.5	0.0-9.2	%
7 Neu#	1.70	1.44-2.24	10 <sup>3</sup> /uL
8 Lym#	1.43	1.00-1.80	10 <sup>3</sup> /uL
9 Mon#	0.18	0.04-0.32	10 <sup>3</sup> /uL
10 Eos#	0.18	0.03-0.33	10 <sup>3</sup> /uL
11 Bas#	0.12	0.00-0.34	10 <sup>3</sup> /uL
12 RBC	2.37	2.20-2.56	10 <sup>6</sup> /uL
13 HGB	5.8	5.5-6.3	g/dL
14 HCT	18.6	16.3-20.3	%
15 MCV	78.5	72.0-82.0	fL
16 MCH	24.4	22.2-27.2	pg
17 MCHC	31.1	29.8-35.8	g/dL
18 RDW-CV	16.3	13.6-19.6	%
19 RDW-SD	53.7	43.2-63.2	fL
20 PLT	68	42-82	10 <sup>3</sup> /uL
21 MPV	9.8	6.5-12.5	fL
22 PDW-SD	15.9	11.9-17.9	fL
23 PDW-CV	17.9	14.1-20.1	%
24 PCT	0.067	0.010-0.110	%
25 P-LCR	37.4	27.4-43.4	%
26 P-LCC	26	7-37	10 <sup>3</sup> /uL



File No.: 1 Lot No.: EH2209L Level: Low  
 Operator: admin Exp. Date: 2022/11/10 Run Time: 2022/09/10 16:32  
 Print Time: 2022/09/10 16:34 QC Mode: Whole Blood-CBC+DIFF QC Sample ID:

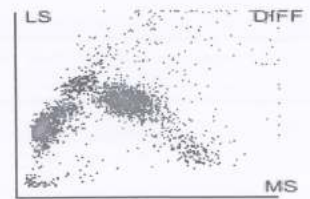
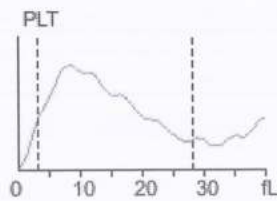
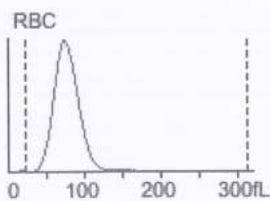
Parameter	Result	Ref. Range	Unit
1 WBC	3.46	3.10-4.10	10 <sup>3</sup> /uL
2 Neu%	50.9	42.1-60.1	%
3 Lym%	40.5	29.8-47.8	%
4 Mon%	3.9	1.1-9.1	%
5 Eos%	4.7	0.0-10.0	%
6 Bas%	4.3	0.0-9.2	%
7 Neu#	1.77	1.44-2.24	10 <sup>3</sup> /uL
8 Lym#	1.40	1.00-1.80	10 <sup>3</sup> /uL
9 Mon#	0.13	0.04-0.32	10 <sup>3</sup> /uL
10 Eos#	0.16	0.03-0.33	10 <sup>3</sup> /uL
11 Bas#	0.15	0.00-0.34	10 <sup>3</sup> /uL
12 RBC	2.35	2.20-2.56	10 <sup>6</sup> /uL
13 HGB	5.8	5.5-6.3	g/dL
14 HCT	18.4	16.3-20.3	%
15 MCV	78.3	72.0-82.0	fL
16 MCH	24.7	22.2-27.2	pg
17 MCHC	31.5	29.8-35.8	g/dL
18 RDW-CV	16.5	13.6-19.6	%
19 RDW-SD	54.4	43.2-63.2	fL
20 PLT	64	42-82	10 <sup>3</sup> /uL
2 MPV	9.5	6.5-12.5	fL
22 PDW-SD	15.6	11.9-17.9	fL
23 PDW-CV	17.3	14.1-20.1	%
24 PCT	0.061	0.010-0.110	%
25 P-LCR	36.6	27.4-43.4	%
26 P-LCC	23	7-37	10 <sup>3</sup> /uL





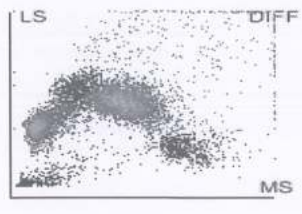
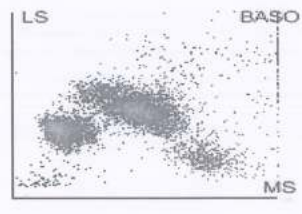
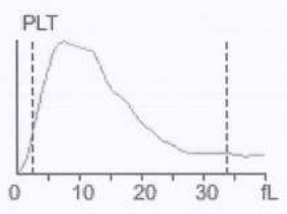
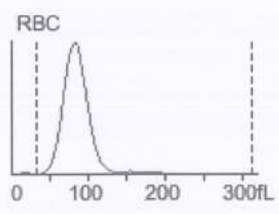
File No.: 1 Lot No.: EH2209L Level: Low  
 Operator: admin Exp. Date: 2022/11/10 Run Time: 2022/09/10 16:35  
 Print Time: 2022/09/10 16:37 QC Mode: Whole Blood-CBC+DIFF QC Sample ID:

Parameter	Result	Ref. Range	Unit
1 WBC	3.50	3.10-4.10	10 <sup>3</sup> /uL
2 Neu%	48.1	42.1-60.1	%
3 Lym%	41.4	29.8-47.8	%
4 Mon%	5.2	1.1-9.1	%
5 Eos%	5.3	0.0-10.0	%
6 Bas%	2.8	0.0-9.2	%
7 Neu#	1.68	1.44-2.24	10 <sup>3</sup> /uL
8 Lym#	1.45	1.00-1.80	10 <sup>3</sup> /uL
9 Mon#	0.18	0.04-0.32	10 <sup>3</sup> /uL
10 Eos#	0.19	0.03-0.33	10 <sup>3</sup> /uL
11 Bas#	0.10	0.00-0.34	10 <sup>3</sup> /uL
12 RBC	2.37	2.20-2.56	10 <sup>6</sup> /uL
13 HGB	5.7	5.5-6.3	g/dL
14 HCT	18.6	16.3-20.3	%
15 MCV	78.4	72.0-82.0	fL
16 MCH	24.3	22.2-27.2	pg
17 MCHC	31.0	29.8-35.8	g/dL
18 RDW-CV	16.3	13.6-19.6	%
19 RDW-SD	53.6	43.2-63.2	fL
20 PLT	68	42-82	10 <sup>3</sup> /uL
2 MPV	9.8	6.5-12.5	fL
22 PDW-SD	16.6	11.9-17.9	fL
23 PDW-CV	17.8	14.1-20.1	%
24 PCT	0.067	0.010-0.110	%
25 P-LCR	38.5	27.4-43.4	%
26 P-LCC	26	7-37	10 <sup>3</sup> /uL



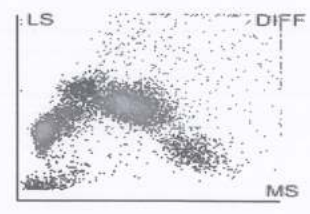
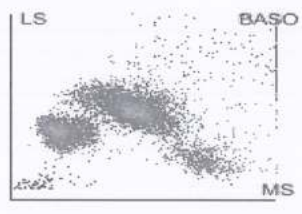
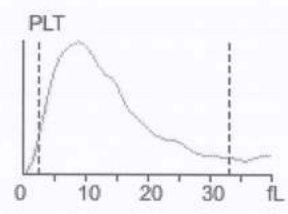
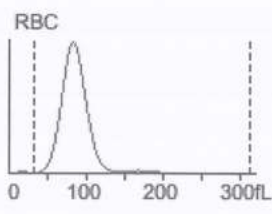
File No.: 2 Lot No.: EH2209N Level: Normal  
 Operator: admin Exp. Date: 2022/11/10 Run Time: 2022/09/10 16:50  
 Print Time: 2022/09/10 16:52 QC Mode: Whole Blood-CBC+DIFF QC Sample ID:

Parameter	Result	Ref. Range	Unit
1 WBC	7.97	7.27-9.27	10 <sup>3</sup> /uL
2 Neu%	57.0	50.4-66.4	%
3 Lym%	29.2	20.4-36.4	%
4 Mon%	6.2	0.4-10.4	%
5 Eos%	7.6	1.8-13.8	%
6 Bas%	3.5	0.0-7.2	%
7 Neu#	4.54	4.13-5.53	10 <sup>3</sup> /uL
8 Lym#	2.33	1.65-3.05	10 <sup>3</sup> /uL
9 Mon#	0.49	0.00-0.90	10 <sup>3</sup> /uL
10 Eos#	0.61	0.15-1.15	10 <sup>3</sup> /uL
11 Bas#	0.28	0.00-0.60	10 <sup>3</sup> /uL
12 RBC	4.64	4.39-4.87	10 <sup>6</sup> /uL
13 HGB	12.8	12.6-13.8	g/dL
14 HCT	40.4	36.7-42.7	%
15 MCV	87.1	80.7-90.7	fL
16 MCH	27.6	25.8-30.8	pg
17 MCHC	31.7	30.7-36.7	g/dL
18 RDW-CV	14.7	12.5-18.5	%
19 RDW-SD	52.7	44.6-64.6	fL
20 PLT	262	218-298	10 <sup>3</sup> /uL
21 MPV	9.8	6.4-12.4	fL
22 PDW-SD	13.7	10.2-16.2	fL
23 PDW-CV	17.3	14.0-20.0	%
24 PCT	0.256	0.141-0.341	%
25 P-LCR	35.6	25.2-41.2	%
26 P-LCC	93	61-111	10 <sup>3</sup> /uL



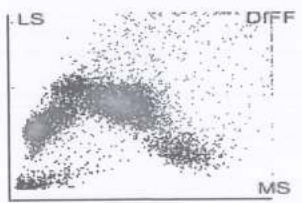
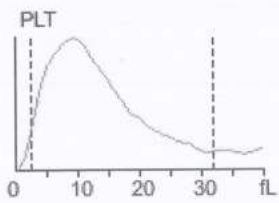
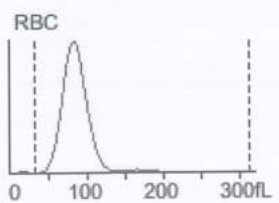
File No.: 2 Lot No.: EH2209N Level: Normal  
 Operator: admin Exp. Date: 2022/11/10 Run Time: 2022/09/10 16:48  
 Print Time: 2022/09/10 16:50 QC Mode: Whole Blood-CBC+DIFF QC Sample ID:

Parameter	Result	Ref. Range	Unit
1 WBC	7.96	7.27-9.27	10 <sup>3</sup> /uL
2 Neu%	57.4	50.4-66.4	%
3 Lym%	30.6	20.4-36.4	%
4 Mon%	5.1	0.4-10.4	%
5 Eos%	6.9	1.8-13.8	%
6 Bas%	3.6	0.0-7.2	%
7 Neu#	4.56	4.13-5.53	10 <sup>3</sup> /uL
8 Lym#	2.44	1.65-3.05	10 <sup>3</sup> /uL
9 Mon#	0.41	0.00-0.90	10 <sup>3</sup> /uL
10 Eos#	0.55	0.15-1.15	10 <sup>3</sup> /uL
11 Bas#	0.29	0.00-0.60	10 <sup>3</sup> /uL
12 RBC	4.61	4.39-4.87	10 <sup>6</sup> /uL
13 HGB	12.8	12.6-13.8	g/dL
14 HCT	40.3	36.7-42.7	%
15 MCV	87.3	80.7-90.7	fL
16 MCH	27.7	25.8-30.8	pg
17 MCHC	31.7	30.7-36.7	g/dL
18 RDW-CV	14.6	12.5-18.5	%
19 RDW-SD	52.6	44.6-64.6	fL
20 PLT	278	218-298	10 <sup>3</sup> /uL
21 IPV	9.6	6.4-12.4	fL
22 PDW-SD	13.1	10.2-16.2	fL
23 PDW-CV	17.0	14.0-20.0	%
24 PCT	0.267	0.141-0.341	%
25 P-LCR	34.4	25.2-41.2	%
26 P-LCC	96	61-111	10 <sup>3</sup> /uL



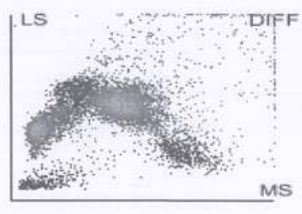
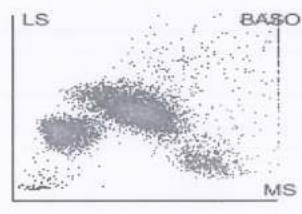
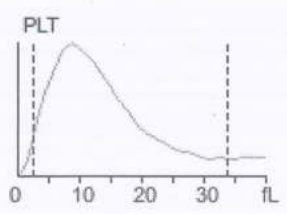
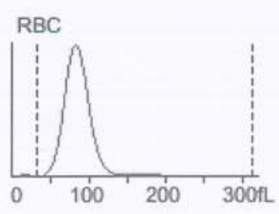
File No.: 2 Lot No.: EH2209N Level: Normal  
 Operator: admin Exp. Date: 2022/11/10 Run Time: 2022/09/10 16:47  
 Print Time: 2022/09/10 16:48 QC Mode: Whole Blood-CBC+DIFF QC Sample ID:

Parameter	Result	Ref. Range	Unit
1 WBC	7.89	7.27-9.27	10 <sup>3</sup> /uL
2 Neu%	57.7	50.4-66.4	%
3 Lym%	29.4	20.4-36.4	%
4 Mon%	5.2	0.4-10.4	%
5 Eos%	7.7	1.8-13.8	%
6 Bas%	3.3	0.0-7.2	%
7 Neu#	4.55	4.13-5.53	10 <sup>3</sup> /uL
8 Lym#	2.32	1.65-3.05	10 <sup>3</sup> /uL
9 Mon#	0.41	0.00-0.90	10 <sup>3</sup> /uL
10 Eos#	0.61	0.15-1.15	10 <sup>3</sup> /uL
11 Bas#	0.26	0.00-0.60	10 <sup>3</sup> /uL
12 RBC	4.66	4.39-4.87	10 <sup>6</sup> /uL
13 HGB	12.8	12.6-13.8	g/dL
14 HCT	40.7	36.7-42.7	%
15 MCV	87.4	80.7-90.7	fL
16 MCH	27.4	25.8-30.8	pg
17 MCHC	31.4	30.7-36.7	g/dL
18 RDW-CV	14.5	12.5-18.5	%
19 RDW-SD	52.5	44.6-64.6	fL
20 PLT	272	218-298	10 <sup>3</sup> /uL
21 MPV	9.6	6.4-12.4	fL
22 PDW-SD	13.6	10.2-16.2	fL
23 PDW-CV	17.2	14.0-20.0	%
24 PCT	0.260	0.141-0.341	%
25 P-LCR	34.9	25.2-41.2	%
26 P-LCC	95	61-111	10 <sup>3</sup> /uL



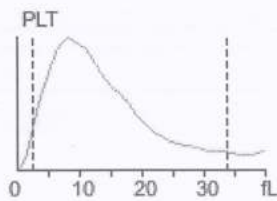
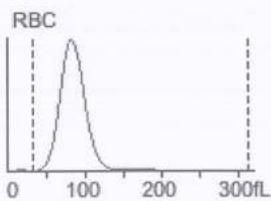
File No.: 2 Lot No.: EH2209N Level: Normal  
 Operator: admin Exp. Date: 2022/11/10 Run Time: 2022/09/10 16:45  
 Print Time: 2022/09/10 16:46 QC Mode: Whole Blood-CBC+DIFF QC Sample ID:

Parameter	Result	Ref. Range	Unit
1 WBC	8.03	7.27-9.27	10 <sup>3</sup> /uL
2 Neu%	58.0	50.4-66.4	%
3 Lym%	29.0	20.4-36.4	%
4 Mon%	5.8	0.4-10.4	%
5 Eos%	7.2	1.8-13.8	%
6 Bas%	3.2	0.0-7.2	%
7 Neu#	4.65	4.13-5.53	10 <sup>3</sup> /uL
8 Lym#	2.33	1.65-3.05	10 <sup>3</sup> /uL
9 Mon#	0.47	0.00-0.90	10 <sup>3</sup> /uL
10 Eos#	0.58	0.15-1.15	10 <sup>3</sup> /uL
11 Bas#	0.25	0.00-0.60	10 <sup>3</sup> /uL
12 RBC	4.60	4.39-4.87	10 <sup>6</sup> /uL
13 HGB	12.8	12.6-13.8	g/dL
14 HCT	40.1	36.7-42.7	%
15 MCV	87.2	80.7-90.7	fL
16 MCH	27.7	25.8-30.8	pg
17 MCHC	31.8	30.7-36.7	g/dL
18 RDW-CV	14.6	12.5-18.5	%
19 RDW-SD	52.7	44.6-64.6	fL
20 PLT	271	218-298	10 <sup>3</sup> /uL
2 MPV	9.8	6.4-12.4	fL
22 PDW-SD	13.1	10.2-16.2	fL
23 PDW-CV	16.7	14.0-20.0	%
24 PCT	0.266	0.141-0.341	%
25 P-LCR	35.6	25.2-41.2	%
26 P-LCC	97	61-111	10 <sup>3</sup> /uL



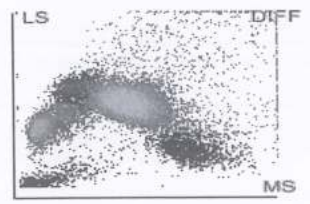
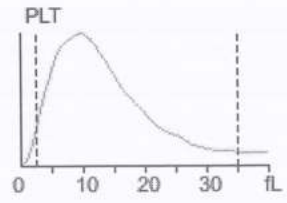
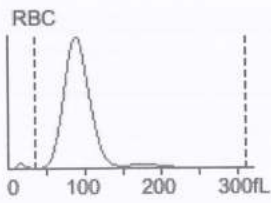
File No.: 2 Lot No.: EH2209N Level: Normal  
 Operator: admin Exp. Date: 2022/11/10 Run Time: 2022/09/10 16:43  
 Print Time: 2022/09/10 16:45 QC Mode: Whole Blood-CBC+DIFF QC Sample ID:

Parameter	Result	Ref. Range	Unit
1 WBC	8.02	7.27-9.27	10 <sup>3</sup> /uL
2 Neu%	57.4	50.4-66.4	%
3 Lym%	29.7	20.4-36.4	%
4 Mon%	4.8	0.4-10.4	%
5 Eos%	8.1	1.8-13.8	%
6 Bas%	4.1	0.0-7.2	%
7 Neu#	4.61	4.13-5.53	10 <sup>3</sup> /uL
8 Lym#	2.38	1.65-3.05	10 <sup>3</sup> /uL
9 Mon#	0.38	0.00-0.90	10 <sup>3</sup> /uL
10 Eos#	0.65	0.15-1.15	10 <sup>3</sup> /uL
11 Bas#	0.33	0.00-0.60	10 <sup>3</sup> /uL
12 RBC	4.63	4.39-4.87	10 <sup>6</sup> /uL
13 HGB	12.9	12.6-13.8	g/dL
14 HCT	40.4	36.7-42.7	%
15 MCV	87.3	80.7-90.7	fL
16 MCH	27.8	25.8-30.8	pg
17 MCHC	31.8	30.7-36.7	g/dL
18 RDW-CV	14.6	12.5-18.5	%
19 RDW-SD	52.6	44.6-64.6	fL
20 PLT	278	218-298	10 <sup>3</sup> /uL
2 MPV	9.8	6.4-12.4	fL
22 PDW-SD	13.7	10.2-16.2	fL
23 PDW-CV	17.2	14.0-20.0	%
24 PCT	0.272	0.141-0.341	%
25 P-LCR	35.9	25.2-41.2	%
26 P-LCC	100	61-111	10 <sup>3</sup> /uL



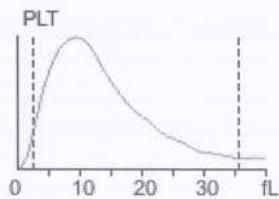
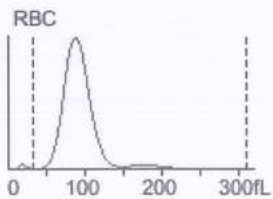
File No.: 3 Lot No.: EH2209H Level: High  
 Operator: admin Exp. Date: 2022/11/10 Run Time: 2022/09/10 17:04  
 Print Time: 2022/09/10 17:05 QC Mode: Whole Blood-CBC+DIFF QC Sample ID:

Parameter	Result	Ref. Range	Unit
1 WBC	18.37	16.57-21.57	10 <sup>3</sup> /uL
2 Neu%	65.3	58.4-72.4	%
3 Lym%	19.9	13.0-25.0	%
4 Mon%	5.0	0.0-10.8	%
5 Eos%	9.8	3.2-17.2	%
6 Bas%	2.6	0.0-5.0	%
7 Neu#	11.99	11.07-13.87	10 <sup>3</sup> /uL
8 Lym#	3.66	2.52-4.72	10 <sup>3</sup> /uL
9 Mon#	0.92	0.00-2.06	10 <sup>3</sup> /uL
10 Eos#	1.80	0.65-3.25	10 <sup>3</sup> /uL
11 Bas#	0.47	0.00-0.96	10 <sup>3</sup> /uL
12 RBC	5.54	5.01-6.01	10 <sup>6</sup> /uL
13 HGB	16.6	16.5-18.1	g/dL
14 HCT	52.2	47.1-55.1	%
15 MCV	94.3	86.7-98.7	fL
16 MCH	29.9	28.7-33.7	pg
17 MCHC	31.8	31.3-37.3	g/dL
18 RDW-CV	14.4	12.2-18.2	%
19 RDW-SD	55.3	45.7-69.7	fL
20 PLT	486	405-525	10 <sup>3</sup> /uL
2 MPV	9.9	6.6-12.6	fL
22 PDW-SD	13.6	10.0-16.0	fL
23 PDW-CV	16.9	13.9-19.9	%
24 PCT	0.480	0.251-0.651	%
25 P-LCR	36.1	26.1-42.1	%
26 P-LCC	175	117-187	10 <sup>3</sup> /uL



File No.: 3 Lot No.: EH2209H Level: High  
 Operator: admin Exp. Date: 2022/11/10 Run Time: 2022/09/10 17:02  
 Print Time: 2022/09/10 17:03 QC Mode: Whole Blood-CBC+DIFF QC Sample ID:

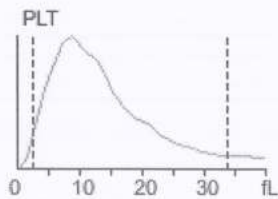
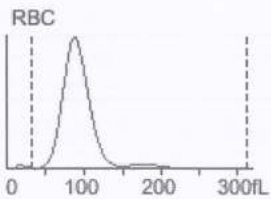
Parameter	Result	Ref. Range	Unit
1 WBC	18.39	16.57-21.57	10 <sup>3</sup> /uL
2 Neu%	66.0	58.4-72.4	%
3 Lym%	19.8	13.0-25.0	%
4 Mon%	4.9	0.0-10.8	%
5 Eos%	9.3	3.2-17.2	%
6 Bas%	2.6	0.0-5.0	%
7 Neu#	12.14	11.07-13.87	10 <sup>3</sup> /uL
8 Lym#	3.64	2.52-4.72	10 <sup>3</sup> /uL
9 Mon#	0.90	0.00-2.06	10 <sup>3</sup> /uL
10 Eos#	1.71	0.65-3.25	10 <sup>3</sup> /uL
11 Bas#	0.48	0.00-0.96	10 <sup>3</sup> /uL
12 RBC	5.51	5.01-6.01	10 <sup>6</sup> /uL
13 HGB	16.6	16.5-18.1	g/dL
14 HCT	51.9	47.1-55.1	%
15 MCV	94.2	86.7-98.7	fL
16 MCH	30.1	28.7-33.7	pg
17 MCHC	32.0	31.3-37.3	g/dL
18 RDW-CV	14.4	12.2-18.2	%
19 RDW-SD	55.5	45.7-69.7	fL
20 PLT	491	405-525	10 <sup>3</sup> /uL
21 MPV	10.0	6.6-12.6	fL
22 PDW-SD	14.0	10.0-16.0	fL
23 PDW-CV	17.2	13.9-19.9	%
24 PCT	0.489	0.251-0.651	%
25 P-LCR	36.6	26.1-42.1	%
26 P-LCC	179	117-187	10 <sup>3</sup> /uL





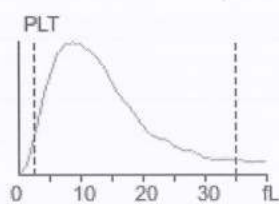
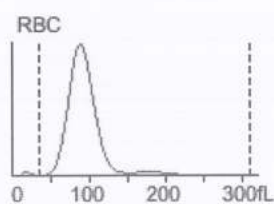
File No.: 3 Lot No.: EH2209H Level: High  
 Operator: admin Exp. Date: 2022/11/10 Run Time: 2022/09/10 16:57  
 Print Time: 2022/09/10 16:59 QC Mode: Whole Blood-CBC+DIFF QC Sample ID:

Parameter	Result	Ref. Range	Unit
1 WBC	18.59	16.57-21.57	10 <sup>3</sup> /uL
2 Neu%	66.2	58.4-72.4	%
3 Lym%	19.6	13.0-25.0	%
4 Mon%	4.6	0.0-10.8	%
5 Eos%	9.6	3.2-17.2	%
6 Bas%	2.5	0.0-5.0	%
7 Neu#	12.31	11.07-13.87	10 <sup>3</sup> /uL
8 Lym#	3.64	2.52-4.72	10 <sup>3</sup> /uL
9 Mon#	0.86	0.00-2.06	10 <sup>3</sup> /uL
10 Eos#	1.78	0.65-3.25	10 <sup>3</sup> /uL
11 Bas#	0.46	0.00-0.96	10 <sup>3</sup> /uL
12 RBC	5.54	5.01-6.01	10 <sup>6</sup> /uL
13 HGB	16.6	16.5-18.1	g/dL
14 HCT	52.4	47.1-55.1	%
15 MCV	94.6	86.7-98.7	fL
16 MCH	29.9	28.7-33.7	pg
17 MCHC	31.6	31.3-37.3	g/dL
18 RDW-CV	14.4	12.2-18.2	%
19 RDW-SD	55.6	45.7-69.7	fL
20 PLT	488	405-525	10 <sup>3</sup> /uL
21 MPV	9.7	6.6-12.6	fL
22 PDW-SD	12.2	10.0-16.0	fL
23 PDW-CV	15.6	13.9-19.9	%
24 PCT	0.473	0.251-0.651	%
25 P-LCR	34.6	26.1-42.1	%
26 P-LCC	169	117-187	10 <sup>3</sup> /uL



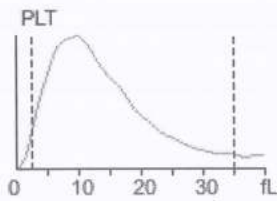
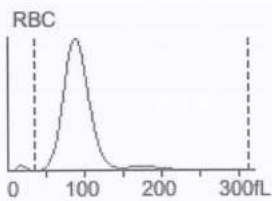
File No.: 3 Lot No.: EH2209H Level: High  
 Operator: admin Exp. Date: 2022/11/10 Run Time: 2022/09/10 16:55  
 Print Time: 2022/09/10 16:57 QC Mode: Whole Blood-CBC+DIFF QC Sample ID:

Parameter	Result	Ref. Range	Unit
1 WBC	18.36	16.57-21.57	10 <sup>3</sup> /uL
2 Neu%	64.6	58.4-72.4	%
3 Lym%	20.8	13.0-25.0	%
4 Mon%	4.4	0.0-10.8	%
5 Eos%	10.2	3.2-17.2	%
6 Bas%	2.5	0.0-5.0	%
7 Neu#	11.86	11.07-13.87	10 <sup>3</sup> /uL
8 Lym#	3.82	2.52-4.72	10 <sup>3</sup> /uL
9 Mon#	0.81	0.00-2.06	10 <sup>3</sup> /uL
10 Eos#	1.87	0.65-3.25	10 <sup>3</sup> /uL
11 Bas#	0.47	0.00-0.96	10 <sup>3</sup> /uL
12 RBC	5.52	5.01-6.01	10 <sup>6</sup> /uL
13 HGB	16.6	16.5-18.1	g/dL
14 HCT	52.1	47.1-55.1	%
15 MCV	94.4	86.7-98.7	fL
16 MCH	30.0	28.7-33.7	pg
17 MCHC	31.8	31.3-37.3	g/dL
18 RDW-CV	14.3	12.2-18.2	%
19 RDW-SD	55.3	45.7-69.7	fL
20 PLT	495	405-525	10 <sup>3</sup> /uL
2 MPV	9.8	6.6-12.6	fL
22 PDW-SD	13.6	10.0-16.0	fL
23 PDW-CV	17.0	13.9-19.9	%
24 PCT	0.487	0.251-0.651	%
25 P-LCR	35.7	26.1-42.1	%
26 P-LCC	177	117-187	10 <sup>3</sup> /uL



File No.: 3 Lot No.: EH2209H Level: High  
 Operator: admin Exp. Date: 2022/11/10 Run Time: 2022/09/10 16:53  
 Print Time: 2022/09/10 16:55 QC Mode: Whole Blood-CBC+DIFF QC Sample ID:

Parameter	Result	Ref. Range	Unit
1 WBC	18.17	16.57-21.57	10 <sup>3</sup> /uL
2 Neu%	64.2	58.4-72.4	%
3 Lym%	20.0	13.0-25.0	%
4 Mon%	5.2	0.0-10.8	%
5 Eos%	10.6	3.2-17.2	%
6 Bas%	2.7	0.0-5.0	%
7 Neu#	11.67	11.07-13.87	10 <sup>3</sup> /uL
8 Lym#	3.63	2.52-4.72	10 <sup>3</sup> /uL
9 Mon#	0.94	0.00-2.06	10 <sup>3</sup> /uL
10 Eos#	1.93	0.65-3.25	10 <sup>3</sup> /uL
11 Bas#	0.49	0.00-0.96	10 <sup>3</sup> /uL
12 RBC	5.55	5.01-6.01	10 <sup>6</sup> /uL
13 HGB	16.6	16.5-18.1	g/dL
14 HCT	52.5	47.1-55.1	%
15 MCV	94.5	86.7-98.7	fL
16 MCH	29.9	28.7-33.7	pg
17 MCHC	31.6	31.3-37.3	g/dL
18 RDW-CV	14.4	12.2-18.2	%
19 RDW-SD	55.7	45.7-69.7	fL
20 PLT	493	405-525	10 <sup>3</sup> /uL
21 MPV	10.0	6.6-12.6	fL
22 PDW-SD	14.1	10.0-16.0	fL
23 PDW-CV	17.2	13.9-19.9	%
24 PCT	0.491	0.251-0.651	%
25 P-LCR	37.2	26.1-42.1	%
26 P-LCC	183	117-187	10 <sup>3</sup> /uL





Date: 1-09-2022

*To Whom so ever it may concern*

*Erba H560 hematology analyzer with serial No: K11042133063 installed at Omega Path Lab,  
NIT 5 Faridabad on 30/8/2022.*

*As per company the calibration of the analyzer is scheduled for once a year after installation.*

*So, the calibration is due on 30/8/2023.*

Thanking you,  
For Transasia Bio-Medicals Ltd.



**Devender Singh**  
**Sr. Service Engineer**

