

Analyte Methodwise Result Report

Lab : 596

Cycle No : 220412

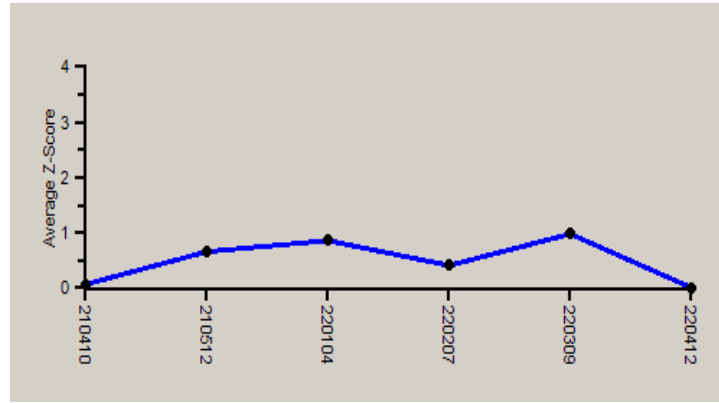
Lab Name : HEALTH HORIZON DIAGNOSTICS

Sample No : 3

Report Date : 25/01/2023

Sample Date : 27-12-2022

Absolute Z-Score Average - Across Rounds



Note : SDI with * marked are not considered for evaluation.

Comments :

Biochemistry, ALT		N	Mean	SD	CV%	Excluded
	All Analyzer	238	37.54	3.80	10.12	10
Your Analyzer :	Erba EM 200	20	37.69	3.62	9.61	1
	Fuji Dri-Chem NX500/i	45	40.28	4.15	10.31	5
	Fuji Dri-Chem NX500/i	44	40.43	4.11	10.17	5
	Fuji Dri-Chem NX500/i	43	40.58	4.06	10.00	5
	Fuji Dri-Chem NX500/i	43	40.58	4.06	10.00	5
	Roche cobas c 311	26	35.62	1.68	4.73	--
	Roche cobas c 311	26	35.62	1.68	4.73	--
	Roche cobas c 111	18	34.16	1.81	5.29	--

Remarks: Interpretation of your reports

- If your SDI lies between +/- 2.0 SDI then your results are well within limits.
- If your SDI lies between +/-2.0 to 2.99 SDI then it is a warning alert flag.
- If your SDI is +/- 3.0 SDI or more then it is an action alert flag.

Interpretation when an analyte is reported for multiple samples in a Round:

- Reported on 2 samples:
 - Two out of two pass - Acceptable performance
 - One out of two pass - Review for random error & take action if appropriate
 - Both failed - Unacceptable performance, Review for systematic error
- Reported on 3 samples:
 - All pass - Acceptable performance
 - Two out of three pass - Review for random error & take action if appropriate
 - One out of three pass - Unacceptable performance, Review for systematic error
 - All failed - Unacceptable performance. Review for systematic error



Analyte Methodwise Result Report

Lab : 596

Cycle No : 220412

Lab Name : HEALTH HORIZON DIAGNOSTICS

Sample No : 3

Report Date : 25/01/2023

Sample Date : 27-12-2022

Biochemistry, AST, U/L

Comparative Statistics

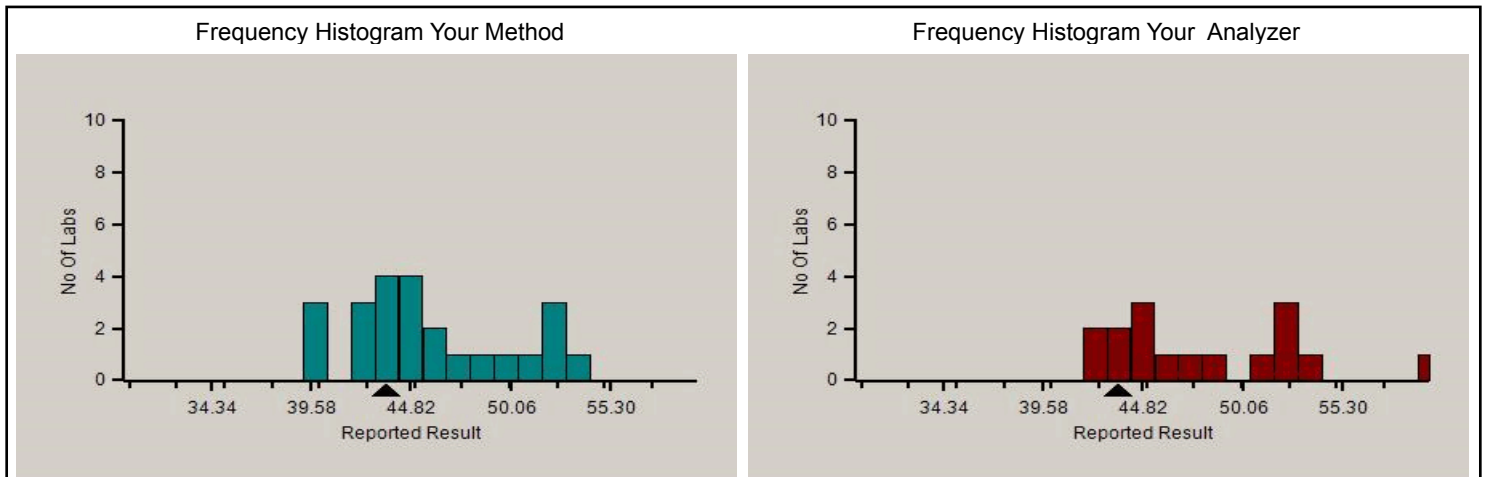
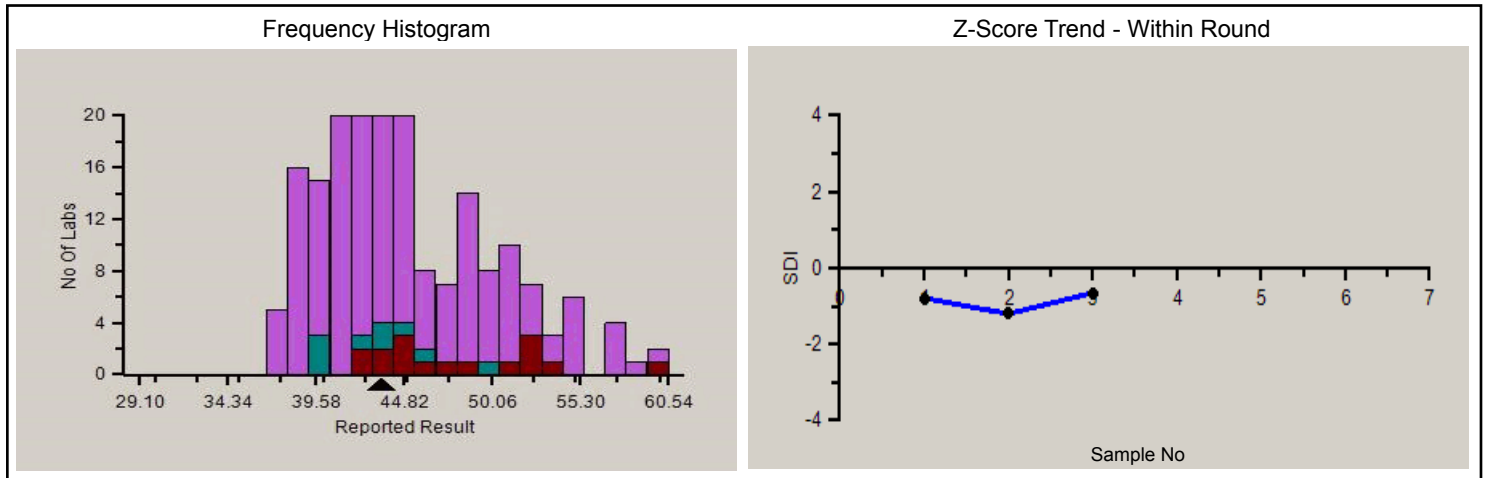
	N	Mean	SD	CV%	Excluded
All Methods	234	44.76	5.19	11.59	10
IFCC - UV without P5P - (Your Method)	25	45.78	4.18	9.13	1
Erba EM 200 - (Your Analyzer)	20	49.65	6.79	13.68	2

Evaluation Based On - Equipment wise Peer Grouping

Your Result	43.50	SDI / z-Score	-0.65
Assigned Value	47.71	Average SDI	-0.88
SDPA	6.500	Uncertainty of AV	1.23
Standard Unit Result Val	43.50	%DEV	-12.39

Note : # - Not evaluated / Bimodal distribution

X : SDI more than 4



Analyte Methodwise Result Report

Lab : 596

Cycle No : 220412

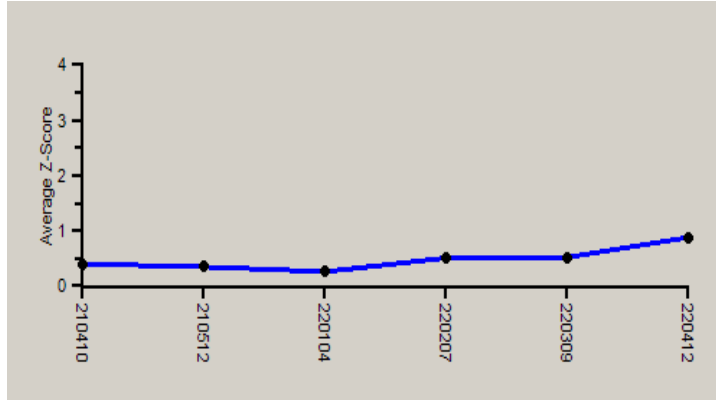
Lab Name : HEALTH HORIZON DIAGNOSTICS

Sample No : 3

Report Date : 25/01/2023

Sample Date : 27-12-2022

Absolute Z-Score Average - Across Rounds



Note : SDI with * marked are not considered for evaluation.

Comments :

Biochemistry, AST		N	Mean	SD	CV%	Excluded
	All Analyzer	234	44.76	5.19	11.59	10
Your Analyzer :	Erba EM 200	20	49.65	6.79	13.68	2
	Fuji Dri-Chem NX500/i	45	44.84	4.86	10.85	4
	Fuji Dri-Chem NX500/i	44	44.59	4.67	10.47	4
	Fuji Dri-Chem NX500/i	43	44.32	4.44	10.02	4
	Fuji Dri-Chem NX500/i	43	44.32	4.44	10.02	4
	Roche cobas c 311	26	41.97	1.83	4.35	--
	Roche cobas c 311	26	41.97	1.83	4.35	--
	Roche cobas c 111	18	45.08	3.48	7.73	--

Remarks: Interpretation of your reports

- a) If your SDI lies between +/- 2.0 SDI then your results are well within limits.
- b) If your SDI lies between +/-2.0 to 2.99 SDI then it is a warning alert flag.
- c) If your SDI is +/- 3.0 SDI or more then it is an action alert flag.

Interpretation when an analyte is reported for multiple samples in a Round:

- a) Reported on 2 samples:
 - Two out of two pass - Acceptable performance
 - One out of two pass - Review for random error & take action if appropriate
 - Both failed - Unacceptable performance, Review for systematic error
- b) Reported on 3 samples:
 - All pass - Acceptable performance
 - Two out of three pass - Review for random error & take action if appropriate
 - One out of three pass - Unacceptable performance, Review for systematic error
 - All failed - Unacceptable performance. Review for systematic error



Analyte Methodwise Result Report

Lab : 596

Cycle No : 220412

Lab Name : HEALTH HORIZON DIAGNOSTICS

Sample No : 3

Report Date : 25/01/2023

Sample Date : 27-12-2022

Biochemistry, Bilirubin Direct, mg/dl

Comparative Statistics

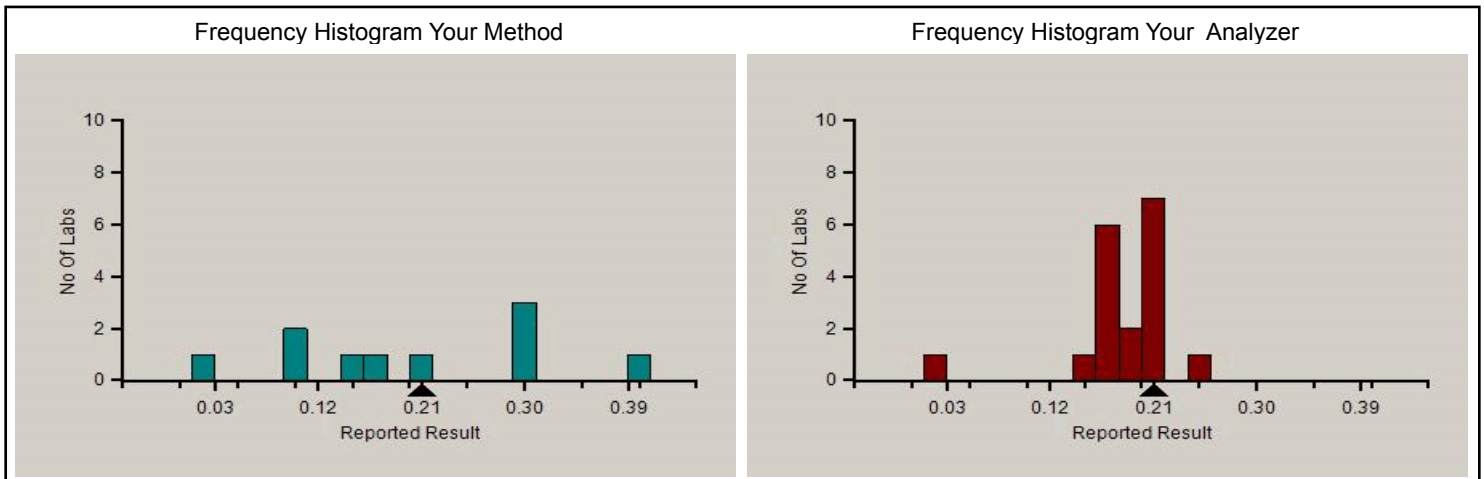
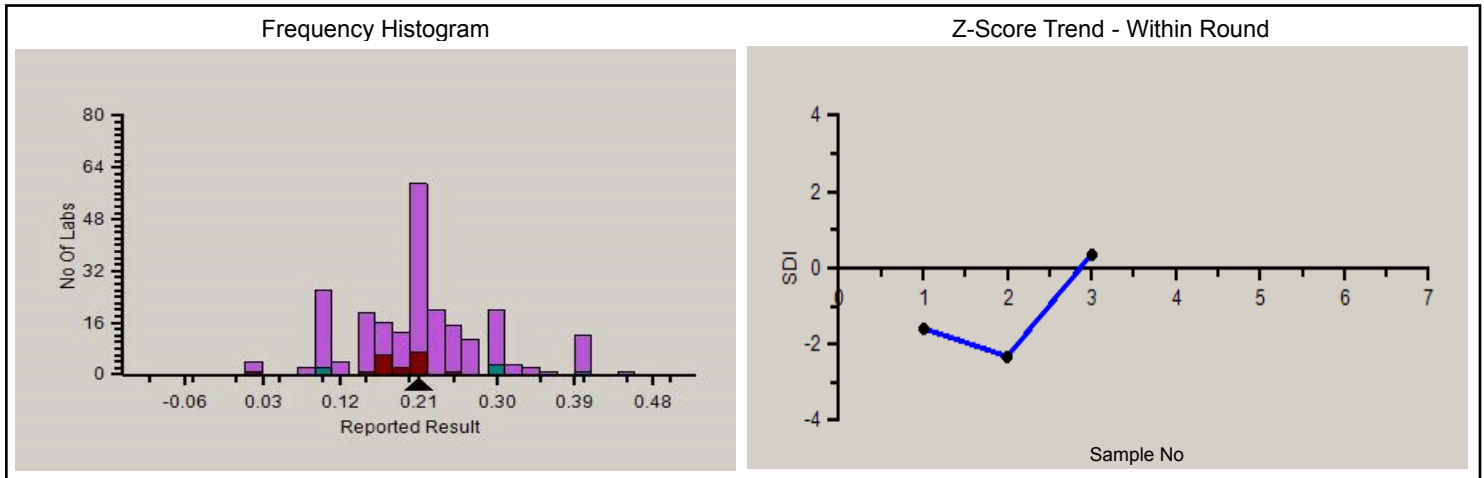
	N	Mean	SD	CV%	Excluded
All Methods	234	0.21	0.09	41.04	11
Diazonium Ion - (Your Method)	11	0.20	0.12	58.33	1
Erba EM 200 - (Your Analyzer)	19	0.18	0.05	26.55	1

Evaluation Based On - Equipment wise Peer Grouping

Your Result	0.21	SDI / z-Score	0.36
Assigned Value	0.18	Average SDI	-1.18
SDPA	0.075	Uncertainty of AV	0.01
Standard Unit Result Val	0.21	%DEV	18.64

Note : # - Not evaluated / Bimodal distribution

X : SDI more than 4



PC-1022

Analyte Methodwise Result Report

Lab : 596

Cycle No : 220412

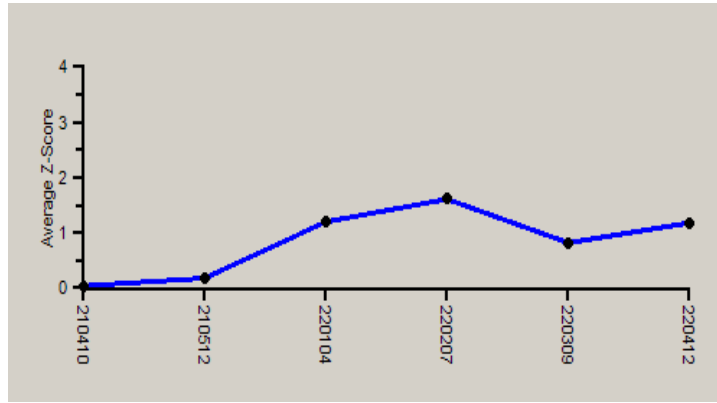
Lab Name : HEALTH HORIZON DIAGNOSTICS

Sample No : 3

Report Date : 25/01/2023

Sample Date : 27-12-2022

Absolute Z-Score Average - Across Rounds



Note : SDI with * marked are not considered for evaluation.

Comments :

Biochemistry, Bilirubin Direct

		N	Mean	SD	CV%	Excluded
	All Analyzer	234	0.21	0.09	40.65	11
Your Analyzer :	Erba EM 200	19	0.18	0.05	26.55	1
	Fuji Dri-Chem NX500/i	44	0.20	0.09	43.00	3
	Fuji Dri-Chem NX500/i	43	0.20	0.09	43.28	3
	Fuji Dri-Chem NX500/i	42	0.20	0.09	43.35	3
	Fuji Dri-Chem NX500/i	42	0.20	0.09	43.35	3
	Roche cobas c 311	26	0.21	0.06	27.23	--
	Roche cobas c 311	26	0.21	0.06	27.23	--
	Roche cobas c 111	18	0.22	0.07	29.02	--

Remarks: Interpretation of your reports

- a) If your SDI lies between +/- 2.0 SDI then your results are well within limits.
- b) If your SDI lies between +/-2.0 to 2.99 SDI then it is a warning alert flag.
- c) If your SDI is +/- 3.0 SDI or more then it is an action alert flag.

Interpretation when an analyte is reported for multiple samples in a Round:

- a) Reported on 2 samples:
 - Two out of two pass - Acceptable performance
 - One out of two pass - Review for random error & take action if appropriate
 - Both failed - Unacceptable performance, Review for systematic error
- b) Reported on 3 samples:
 - All pass - Acceptable performance
 - Two out of three pass - Review for random error & take action if appropriate
 - One out of three pass - Unacceptable performance, Review for systematic error
 - All failed - Unacceptable performance. Review for systematic error



Analyte Methodwise Result Report

Lab : 596

Cycle No : 220412

Lab Name : HEALTH HORIZON DIAGNOSTICS

Sample No : 3

Report Date : 25/01/2023

Sample Date : 27-12-2022

Biochemistry, Bilirubin Total, mg/dl

Comparative Statistics

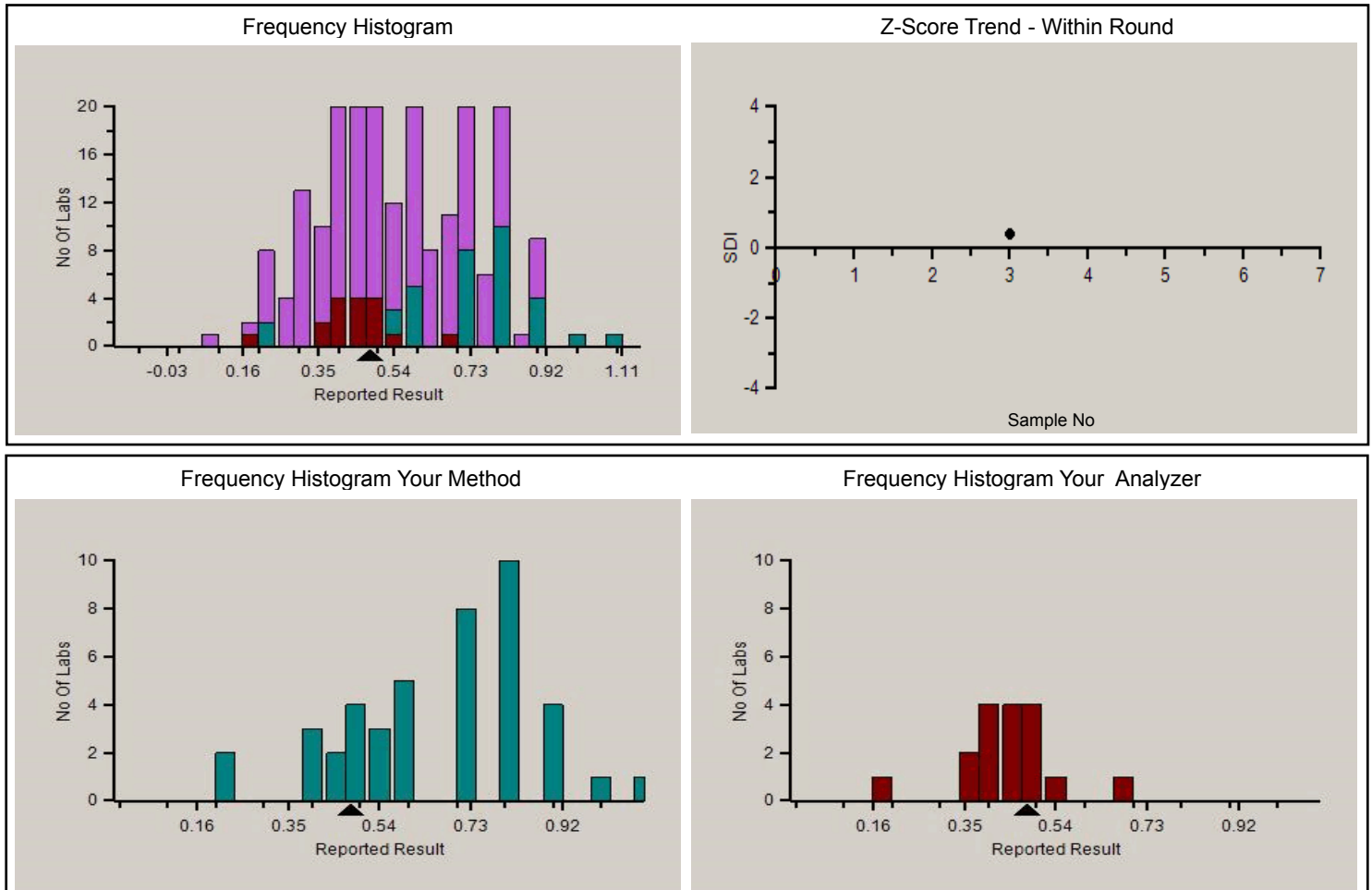
	N	Mean	SD	CV%	Excluded
All Methods	235	0.54	0.19	35.24	1
Diazonium Ion - (Your Method)	44	0.66	0.20	30.20	1
Erba EM 200 - (Your Analyzer)	17	0.43	0.10	23.15	--

Evaluation Based On - Equipment wise Peer Grouping

Your Result	0.48	SDI / z-Score	0.38
Assigned Value	0.42	Average SDI	0.38
SDPA	0.160	Uncertainty of AV	0.02
Standard Unit Result Val	0.48	%DEV	11.11

Note : # - Not evaluated / Bimodal distribution

X : SDI more than 4



PC-1022

Analyte Methodwise Result Report

Lab : 596

Cycle No : 220412

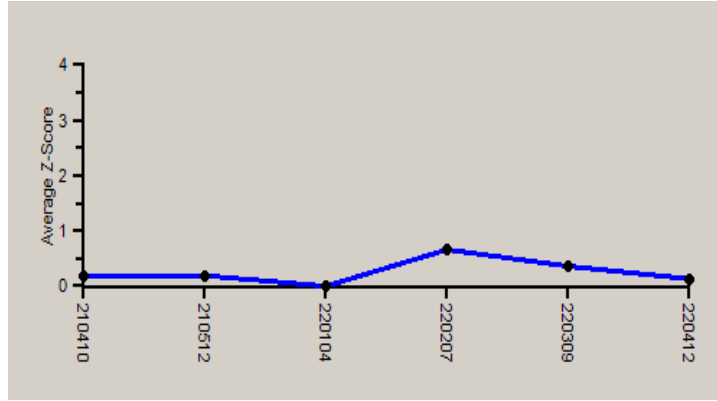
Lab Name : HEALTH HORIZON DIAGNOSTICS

Sample No : 3

Report Date : 25/01/2023

Sample Date : 27-12-2022

Absolute Z-Score Average - Across Rounds



Note : SDI with * marked are not considered for evaluation.

Comments :

Biochemistry, Bilirubin Total		N	Mean	SD	CV%	Excluded
All Analyzer		235	0.54	0.19	35.24	1
Your Analyzer :	Erba EM 200	17	0.43	0.10	23.15	--
	Fuji Dri-Chem NX500/i	45	0.71	0.17	23.24	1
	Fuji Dri-Chem NX500/i	44	0.71	0.17	23.55	1
	Fuji Dri-Chem NX500/i	43	0.71	0.17	23.73	1
	Fuji Dri-Chem NX500/i	43	0.71	0.17	23.73	1
	Roche cobas c 311	28	0.40	0.08	21.05	--
	Roche cobas c 311	28	0.40	0.08	21.05	--
	Roche cobas c 111	17	0.39	0.09	23.98	--

Remarks: Interpretation of your reports

- a) If your SDI lies between +/- 2.0 SDI then your results are well within limits.
- b) If your SDI lies between +/-2.0 to 2.99 SDI then it is a warning alert flag.
- c) If your SDI is +/- 3.0 SDI or more then it is an action alert flag.

Interpretation when an analyte is reported for multiple samples in a Round:

- a) Reported on 2 samples:
 - Two out of two pass - Acceptable performance
 - One out of two pass - Review for random error & take action if appropriate
 - Both failed - Unacceptable performance, Review for systematic error
- b) Reported on 3 samples:
 - All pass - Acceptable performance
 - Two out of three pass - Review for random error & take action if appropriate
 - One out of three pass - Unacceptable performance, Review for systematic error
 - All failed - Unacceptable performance. Review for systematic error

Dr Puneet Kumar Nigam

Dr Puneet Kumar Nigam
PT coordinator & Technical Manager, MHL EQAS
Unit No. 409-416,
Commercial Building - 1A,
Kohinoor Mall, Kirol Road, Kurla (W),
Mumbai - 400070

