

### CALIBRATION CERTIFICATE

<b>NAME OF THE CUSTOMER</b> Sri Sai healthcare unit Sy no 83/2nd floor, Suchitra, Jeedimetla Hyderabad, Telangana, 500067.	<b>MAKE</b> Sysmex Corporation Sysmex India Pvt. Ltd. 1002, Damji Shamji Business Galleria, 10th Floor, LBS Marg Kanjurmarg (West), Mumbai 400 078, India Tel: +91 (22) 6112 6666 Fax: +91 (22) 2577 6790
---	---

<b>PRODUCT NAME</b> XN-350 HEAMATOLOGY ANALYZER	<b>SERIAL NO</b> 16447
---	---------------------------

This is to certify that the XN-350 Hematology Analyzer has been calibrated with XN CAL Calibrator (Lot No 23322101, Exp. Date 01/01/2023)

S.NO	TEST PARAMETERS	MEASURED/CALIBRATED	REMARKS
1.	Start up	WBC/RBC/HGB/PLT	PASS
2.	Reproducibility	WBC/RBC/HGB/MCV/HCT/PLT	PASS
3.	QC	WBC/RBC/HGB/HCT/PLT	PASS
4.	Calibration (Lot No. 23322101)	WBC/RBC/HGB/HCT/PLT	PASS

Date of Calibration: 17/12/2022	Due date for Calibration: 16/12/2023
---------------------------------	--------------------------------------

**NAME OF THE ENGINEER**

G S Manikantha



Sysmex India Pvt Ltd  
 HO. 1002, Damji Shamji Business Galleria, 10<sup>th</sup> Floor, LBS Marg, Kanjurmarg ( West ), Mumbai 400078, India  
 Tel. +91-22-6112-6666 Fax. +91-22-2577-6790  
 Factory, Village Malpur, Nalagarh Road, Baddi 173205, H. P. Tel. +91-9218422282/9816672282

[www.sysmex.co.in](http://www.sysmex.co.in)

CIN : U33120MH1998PT115943



# Traceability and Uncertainty

## XN CAL Sysmex Calibrator System

### XN-L Series Automated Hematology Analyzer

LOT NO: 2332 2101  
EXP. DATE: 01-Jan-2023

Parameter	Reference Method	Reference Material	Assigned Value	Uncertainty*	Unit
WBC-C	*1	-	7.978	0.20	10 <sup>9</sup> /L
WBC-D	*1	-	7.486	0.19	10 <sup>9</sup> /L
RBC	*1	-	4.408	0.067	10 <sup>12</sup> /L
RBC-O	*1	-	4.299	0.091	10 <sup>12</sup> /L
PLT	*2	-	249.0	9.8	10 <sup>9</sup> /L
PLT-O	*2	-	253.8	12	10 <sup>9</sup> /L
HGB	*3, *4	-	12.23	0.19	g / dL
HCT	*5	-	35.66	0.61	%

\* : This uncertainty (expanded uncertainty: k=2) was calculated in accordance with the "Guide to the expression of uncertainty in measurement" (GUM: 1995).

\*1: ICSH Expert Panel on Cytometry, Clinical Laboratory Haematology, 16, 131-138, 1994

"Reference method for the enumeration of erythrocytes and leucocytes"

\*2: ICSH Expert Panel on Cytometry and International Society of Laboratory Hematology Task Force on Platelet Counting,

American Journal of Clinical Pathology, 115, 460-464, 2001

"Platelet Counting by the RBC/Platelet Ratio method – A reference Method"

\*3: CLSI, H15-A3

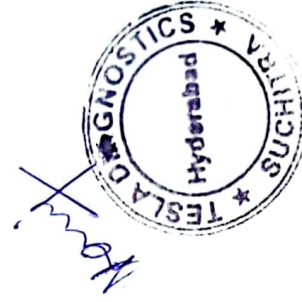
"Reference and selected procedures for the quantitative determination of hemoglobin in blood – 3rd edition; Approved standard"

\*4: Journal of Clinical Pathology, 49, 271-274, 1996

"Recommendation for reference method for haemoglobinometry in human blood (ICSH standard 1995) and specification for international haemoglobinocyanide reference preparation (4th ed.)"

\*5: CLSI H7-A3

"Procedure for Determining Packed Cell Volume by the Microhematcrit Method – 3rd edition; Approved Standard"



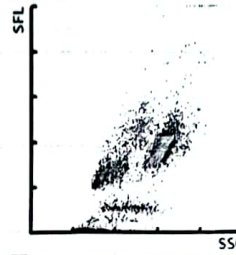
Sample No.: CAL-CAL-01  
Patient ID:  
Name:  
Sample Comment:

Ward: Adapter:

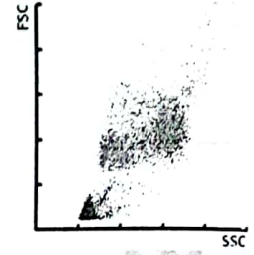
Pos.: 2022/12/17 14:10:43 WB  
Doctor:  
Birth: Sex:  
Nickname: XN-L

WBC	7.56	[10 <sup>3</sup> /uL]		
RBC	4.52	[10 <sup>6</sup> /uL]		
HGB	12.3	[g/dL]		
HCT	36.6	[%]		
MCV	81.0	[fL]		
MCH	27.2	[pg]		
MCHC	33.6	[g/dL]		
PLT	253	[10 <sup>3</sup> /uL]		
RDW-SD	45.5	[fL]		
RDW-CV	15.6	[%]		
PDW	7.6	[fL]		
MPV	9.4	[fL]		
P-LCR	15.5	[%]		
PCT	0.24	[%]		
NEUT	3.22	[10 <sup>3</sup> /uL]	42.6	[%]
LYMPH	2.38	[10 <sup>3</sup> /uL]	31.5	[%]
MONO	0.72	[10 <sup>3</sup> /uL]	9.5	[%]
EO	0.81	[10 <sup>3</sup> /uL]	10.7	[%]
BASO	0.43	[10 <sup>3</sup> /uL]	5.7	[%]
IG	0.81	[10 <sup>3</sup> /uL]	10.7	[%]

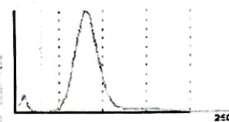
WDF



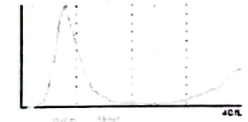
WDF-CBC



RBC



PLT



WBC IP Message

RBC IP Message

PLT IP Message



Sample No.: CAL-CAL-02  
Patient ID:  
Name:  
Sample Comment:

Ward:

Adapter:

Pos.:

2022/12/17 14:12:11 WB

Doctor:

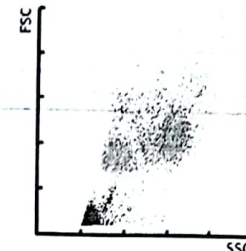
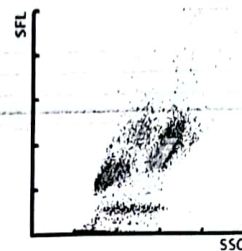
Birth:

Sex:

Nickname: XN-L

WDF

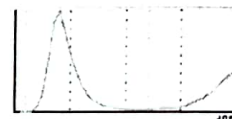
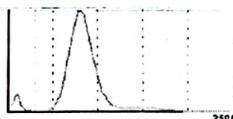
WDF - CBC



WBC	7.74	[10 <sup>3</sup> /uL]		
RBC	4.44	[10 <sup>6</sup> /uL]		
HGB	12.1	[g/dL]		
HCT	35.9	[%]		
MCV	80.9	[fL]		
MCH	27.3	[pg]		
MCHC	33.7	[g/dL]		
PLT	251	[10 <sup>3</sup> /uL]		
RDW-SD	45.4	[fL]		
RDW-CV	15.4	[%]		
PDW	7.7	[fL]		
MPV	9.4	[fL]		
P-LCR	15.6	[%]		
PCT	0.23	[%]		
NEUT	3.34	[10 <sup>3</sup> /uL]	43.1	[%]
LYMPH	2.45	[10 <sup>3</sup> /uL]	31.7	[%]
MONO	0.76	[10 <sup>3</sup> /uL]	9.8	[%]
EO	0.71	[10 <sup>3</sup> /uL]	9.2	[%]
BASO	0.48	[10 <sup>3</sup> /uL]	6.2	[%]
IG	0.86	[10 <sup>3</sup> /uL]	11.1	[%]

RBC

PLT



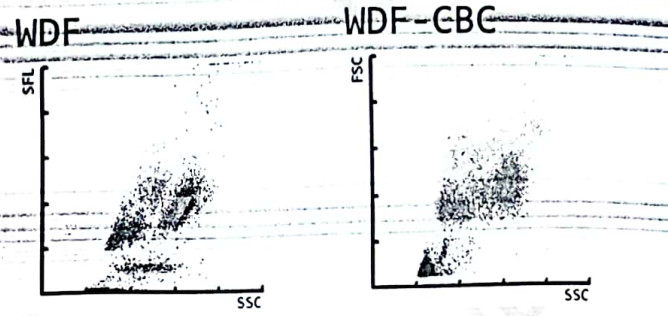
WBC IP Message

RBC IP Message

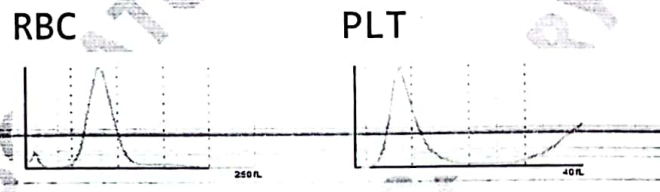
PLT IP Message



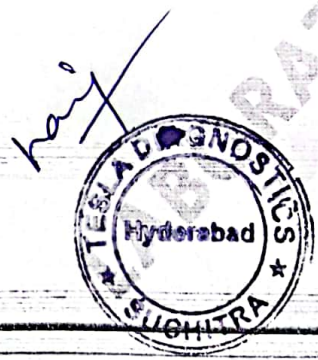
Sample No.: CAL-CAL-03      Adapter:      Pos.:      2022/12/17 14:13:36 WB  
 Patient ID:      Ward:      Doctor:  
 Name:      Birth:      Sex:  
 Sample Comment:      Nickname: XN-L



WBC	7.49	[10 <sup>3</sup> /uL]		
RBC	4.43	[10 <sup>6</sup> /uL]		
HGB	12.1	[g/dL]		
HCT	35.8	[%]		
MCV	80.8	[fL]		
MCH	27.3	[pg]		
MCHC	33.8	[g/dL]		
PLT	243	[10 <sup>3</sup> /uL]		
RDW-SD	45.1	[fL]		
RDW-CV	15.4	[%]		
PDW	7.8	[fL]		
MPV	9.4	[fL]		
P-LCR	16.0	[%]		
PCT	0.23	[%]		
NEUT	3.20	[10 <sup>3</sup> /uL]	42.7	[%]
LYMPH	2.37	[10 <sup>3</sup> /uL]	31.6	[%]
MONO	0.71	[10 <sup>3</sup> /uL]	9.5	[%]
EO	0.74	[10 <sup>3</sup> /uL]	9.9	[%]
BASO	0.47	[10 <sup>3</sup> /uL]	6.3	[%]
IG	0.81	[10 <sup>3</sup> /uL]	10.8	[%]



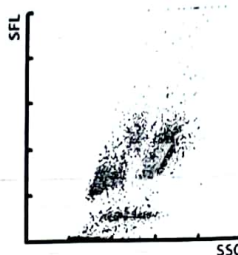
WBC IP Message      RBC IP Message      PLT IP Message



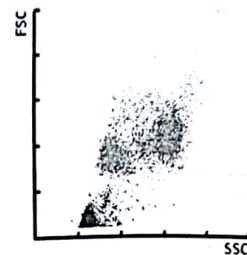
Sample No.: CAL-CAL-04 Adapter: Pos.: 2022/12/17 14:15:08 WB  
Patient ID: Ward: Doctor:  
Name: Birth: Sex:  
Sample Comment: Nickname: XN-L

WBC	7.43	[10 <sup>3</sup> /uL]		
RBC	4.44	[10 <sup>6</sup> /uL]		
HGB	12.2	[g/dL]		
HCT	35.8	[%]		
MCV	80.6	[fL]		
MCH	27.5	[pg]		
MCHC	34.1	[g/dL]		
PLT	245	[10 <sup>3</sup> /uL]		
RDW-SD	45.6	[fL]		
RDW-CV	15.4	[%]		
PDW	8.0	[fL]		
MPV	9.3	[fL]		
P-LCR	15.1	[%]		
PCT	0.23	[%]		
NEUT	3.13	[10 <sup>3</sup> /uL]	42.1	[%]
LYMPH	2.35	[10 <sup>3</sup> /uL]	31.6	[%]
MONO	0.80	[10 <sup>3</sup> /uL]	10.8	[%]
EO	0.72	[10 <sup>3</sup> /uL]	9.7	[%]
BASO	0.43	[10 <sup>3</sup> /uL]	5.8	[%]
IG	0.80	[10 <sup>3</sup> /uL]	10.8	[%]

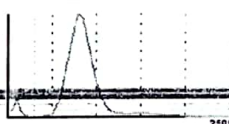
WDF



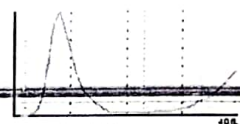
WDF-CBC



RBC



PLT



WBC IP Message

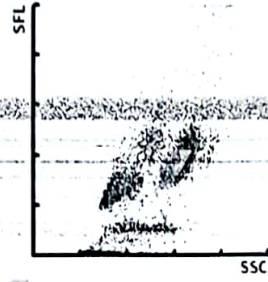
RBC IP Message

PLT IP Message

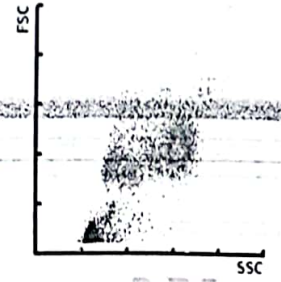


WBC	7.49	[10 <sup>3</sup> /uL]		
RBC	4.43	[10 <sup>6</sup> /uL]		
HGB	12.2	[g/dL]		
HCT	35.8	[%]		
MCV	80.8	[fL]		
MCH	27.5	[pg]		
MCHC	34.1	[g/dL]		
PLT	245	[10 <sup>3</sup> /uL]		
RDW-SD	45.8	[fL]		
RDW-CV	15.3	[%]		
PDW	7.9	[fL]		
MPV	9.3	[fL]		
P-LCR	15.5	[%]		
PCT	0.23	[%]		
NEUT	3.13	[10 <sup>3</sup> /uL]	41.9	[%]
LYMPH	2.40	[10 <sup>3</sup> /uL]	32.0	[%]
MONO	0.69	[10 <sup>3</sup> /uL]	9.2	[%]
EO	0.84	[10 <sup>3</sup> /uL]	11.2	[%]
BASO	0.43	[10 <sup>3</sup> /uL]	5.7	[%]
IG	0.81	[10 <sup>3</sup> /uL]	10.8	[%]

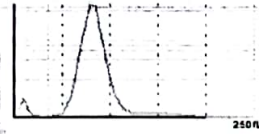
WDF



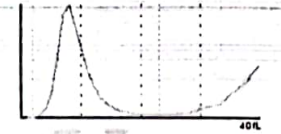
WDF-CBC



RBC



PLT



WBC IP Message

RBC IP Message

PLT IP Message

*handwritten signature*



Sample No.: CAL-CAL-06  
Patient ID:  
Name:  
Sample Comment:

Ward:

Adapter:

Pos.:

2022/12/17 14:18:06 WB

Doctor:

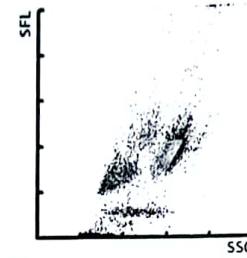
Birth:

Sex:

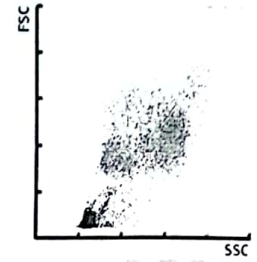
Nickname: XN-L

WBC	7.72	[10 <sup>3</sup> /uL]		
RBC	4.44	[10 <sup>6</sup> /uL]		
HGB	12.2	[g/dL]		
HCT	36.0	[%]		
MCV	81.1	[fL]		
MCH	27.5	[pg]		
MCHC	33.9	[g/dL]		
PLT	245	[10 <sup>3</sup> /uL]		
RDW-SD	46.3	[fL]		
RDW-CV	15.5	[%]		
PDW	7.7	[fL]		
MPV	9.2	[fL]		
P-LCR	14.9	[%]		
PCT	0.23	[%]		
NEUT	3.27	[10 <sup>3</sup> /uL]	42.5	[%]
LYMPH	2.42	[10 <sup>3</sup> /uL]	31.3	[%]
MONO	0.75	[10 <sup>3</sup> /uL]	9.7	[%]
EO	0.86	[10 <sup>3</sup> /uL]	11.1	[%]
BASO	0.42	[10 <sup>3</sup> /uL]	5.4	[%]
IG	0.83	[10 <sup>3</sup> /uL]	10.8	[%]

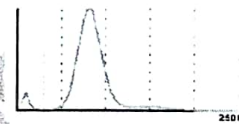
WDF



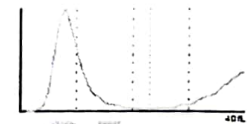
WDF-CBC



RBC



PLT



WBC IP Message

RBC IP Message

PLT IP Message





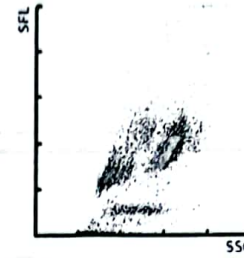
Sample No.: CAL-CAL-07  
Patient ID:  
Name:  
Sample Comment:

Ward: Adapter:

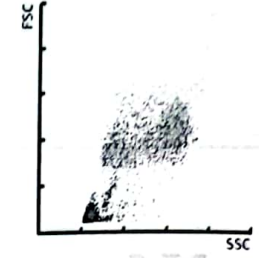
Pos.: 2022/12/17 14:19:31 WB  
Doctor:  
Birth: Sex:  
Nickname: XN-L

WBC	7.62	[10 <sup>3</sup> /uL]		
RBC	4.38	[10 <sup>6</sup> /uL]		
HGB	12.2	[g/dL]		
HCT	35.4	[%]		
MCV	80.8	[fL]		
MCH	27.9	[pg]		
MCHC	34.5	[g/dL]		
PLT	239	[10 <sup>3</sup> /uL]		
RDW-SD	45.5	[fL]		
RDW-CV	15.4	[%]		
PDW	7.9	[fL]		
MPV	9.4	[fL]		
P-LCR	15.7	[%]		
PCT	0.22	[%]		
NEUT	3.14	[10 <sup>3</sup> /uL]	41.3	[%]
LYMPH	2.41	[10 <sup>3</sup> /uL]	31.6	[%]
MONO	0.76	[10 <sup>3</sup> /uL]	10.0	[%]
EO	0.88	[10 <sup>3</sup> /uL]	11.5	[%]
BASO	0.43	[10 <sup>3</sup> /uL]	5.6	[%]
IG	0.79	[10 <sup>3</sup> /uL]	10.4	[%]

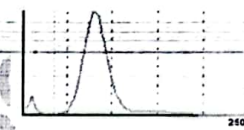
WDF



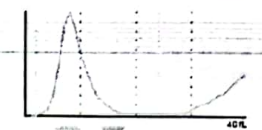
WDF-CBC



RBC



PLT



WBC IP Message

RBC IP Message

PLT IP Message

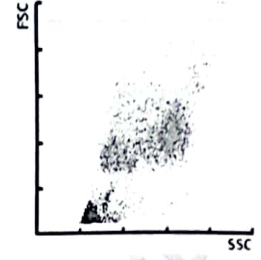
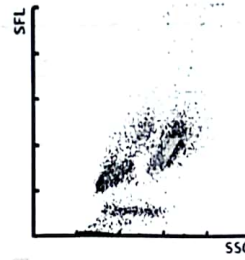
*Handwritten signature*



Sample No.: CAL-CAL-08 Adapter: Pos.: 2022/12/17 14:21:00 WB  
 Patient ID: Ward: Doctor:  
 Name: Birth: Sex:  
 Sample Comment: Nickname: XN-L

WDF

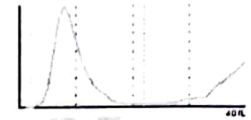
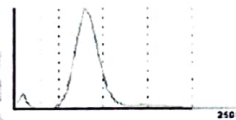
WDF-CBC



WBC	7.44	[10 <sup>3</sup> /uL]		
RBC	4.45	[10 <sup>6</sup> /uL]		
HGB	12.3	[g/dL]		
HCT	36.0	[%]		
MCV	80.9	[fL]		
MCH	27.6	[pg]		
MCHC	34.2	[g/dL]		
PLT	244	[10 <sup>3</sup> /uL]		
RDW-SD	45.0	[fL]		
RDW-CV	15.3	[%]		
PDW	8.4	[fL]		
MPV	9.4	[fL]		
P-LCR	16.5	[%]		
PCT	0.23	[%]		
NEUT	3.07	[10 <sup>3</sup> /uL]	41.3	[%]
LYMPH	2.32	[10 <sup>3</sup> /uL]	31.2	[%]
MONO	0.76	[10 <sup>3</sup> /uL]	10.2	[%]
EO	0.82	[10 <sup>3</sup> /uL]	11.0	[%]
BASO	0.47	[10 <sup>3</sup> /uL]	6.3	[%]
IG	0.80	[10 <sup>3</sup> /uL]	10.8	[%]

RBC

PLT



WBC IP Message

RBC IP Message

PLT IP Message



Sample No.: CAL-CAL-09  
Patient ID:  
Name:  
Sample Comment:

Ward:

Adapter:

Pos.:

2022/12/17 14:22:27 WB

Doctor:

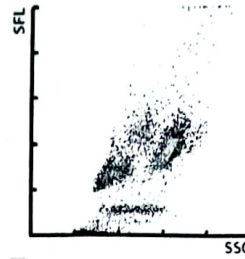
Birth:

Sex:

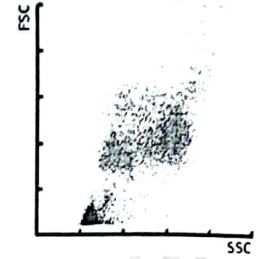
Nickname: XN-L

WBC	7.69	[10 <sup>3</sup> /uL]		
RBC	4.49	[10 <sup>6</sup> /uL]		
HGB	12.3	[g/dL]		
HCT	36.3	[%]		
MCV	80.8	[fL]		
MCH	27.4	[pg]		
MCHC	33.9	[g/dL]		
PLT	237	[10 <sup>3</sup> /uL]		
RDW-SD	45.2	[fL]		
RDW-CV	15.3	[%]		
PDW	8.1	[fL]		
MPV	9.1	[fL]		
P-LCR	14.6	[%]		
PCT	0.22	[%]		
NEUT	3.20	[10 <sup>3</sup> /uL]	41.7	[%]
LYMPH	2.47	[10 <sup>3</sup> /uL]	32.1	[%]
MONO	0.74	[10 <sup>3</sup> /uL]	9.6	[%]
EO	0.87	[10 <sup>3</sup> /uL]	11.3	[%]
BASO	0.41	[10 <sup>3</sup> /uL]	5.3	[%]
IG	0.84	[10 <sup>3</sup> /uL]	10.9	[%]

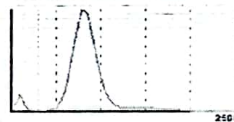
WDF



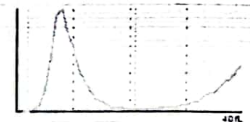
WDF - CBC



RBC



PLT



WBC IP Message

RBC IP Message

PLT IP Message



Sample No.: CAL-CAL-10  
Patient ID:  
Name:  
Sample Comment:

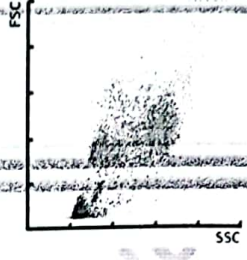
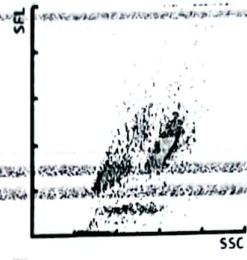
Ward:  
Adapter:

Pos.: 2022/12/17 14:23:52 WB  
Doctor:  
Birth:  
Sex:  
Nickname: XN-L

WDF

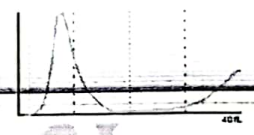
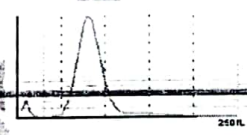
WDF-CBC

WBC	7.79	[10 <sup>3</sup> /uL]		
RBC	4.49	[10 <sup>6</sup> /uL]		
HGB	12.4	[g/dL]		
HCT	36.3	[%]		
MCV	80.8	[fL]		
MCH	27.6	[pg]		
MCHC	34.2	[g/dL]		
PLT	240	[10 <sup>3</sup> /uL]		
RDW-SD	45.8	[fL]		
RDW-CV	15.5	[%]		
PDW	7.9	[fL]		
MPV	9.0	[fL]		
P-LCR	13.5	[%]		
PCT	0.22	[%]		
NEUT	3.19	[10 <sup>3</sup> /uL]	40.9	[%]
LYMPH	2.53	[10 <sup>3</sup> /uL]	32.5	[%]
MONO	0.78	[10 <sup>3</sup> /uL]	10.0	[%]
EO	0.84	[10 <sup>3</sup> /uL]	10.8	[%]
BASO	0.45	[10 <sup>3</sup> /uL]	5.8	[%]
IG	0.84	[10 <sup>3</sup> /uL]	10.8	[%]



RBC

PLT



WBC IP Message

RBC IP Message

PLT IP Message



Sample No.: CAL-CAL-11  
Patient ID:  
Name:  
Sample Comment:

Ward:

Adapter:

Pos.:

2022/12/17 14:25:20 WB

Doctor:

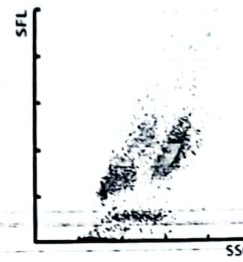
Birth:

Sex:

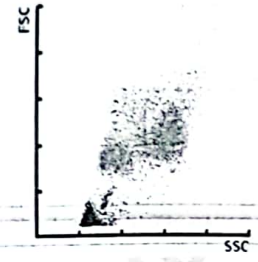
Nickname: XN-L

WBC	7.45	[10 <sup>3</sup> /uL]		
RBC	4.46	[10 <sup>6</sup> /uL]		
HGB	12.3	[g/dL]		
HCT	36.1	[%]		
MCV	80.9	[fL]		
MCH	27.6	[pg]		
MCHC	34.1	[g/dL]		
PLT	245	[10 <sup>3</sup> /uL]		
RDW-SD	45.3	[fL]		
RDW-CV	15.5	[%]		
PDW	7.7	[fL]		
MPV	9.2	[fL]		
P-LCR	14.9	[%]		
PCT	0.23	[%]		
NEUT	3.10	[10 <sup>3</sup> /uL]	41.6	[%]
LYMPH	2.40	[10 <sup>3</sup> /uL]	32.2	[%]
MONO	0.73	[10 <sup>3</sup> /uL]	9.8	[%]
EO	0.79	[10 <sup>3</sup> /uL]	10.6	[%]
BASO	0.43	[10 <sup>3</sup> /uL]	5.8	[%]
IG	0.82	[10 <sup>3</sup> /uL]	11.0	[%]

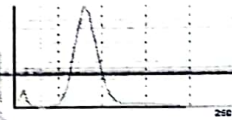
WDF



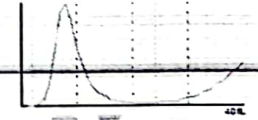
WDF-CBC



RBC



PLT



WBC IP Message

RBC IP Message

PLT IP Message

*hox*

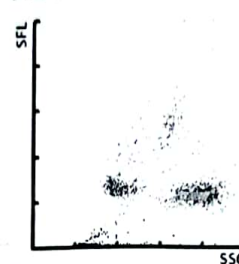
Sample No.: QC-22661401  
 Patient ID:  
 Name:  
 Sample Comment:

Adapter: Pos.:  
 Ward: Birth:

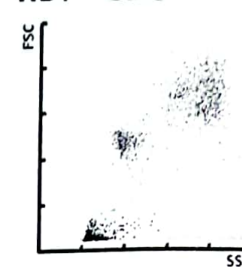
2022/12/17 15:12:03 WB  
 Doctor:  
 Sex:  
 Nickname: XN-L

WBC	2.46	[10 <sup>3</sup> /uL]		
RBC	2.31	[10 <sup>6</sup> /uL]		
HGB	5.4	[g/dL]		
HCT	16.5	[%]		
MCV	71.4	[fL]		
MCH	23.4	[pg]		
MCHC	32.7	[g/dL]		
PLT	69	[10 <sup>3</sup> /uL]		
RDW-SD	54.0	[fL]		
RDW-CV	21.0	[%]		
PDW	12.2	[fL]		
MPV	10.9	[fL]		
P-LCR	31.6	[%]		
PCT	0.08	[%]		
NEUT	1.10	[10 <sup>3</sup> /uL]	44.7	[%]
LYMPH	0.73	[10 <sup>3</sup> /uL]	29.7	[%]
MONO	0.20	[10 <sup>3</sup> /uL]	8.1	[%]
EO	0.28	[10 <sup>3</sup> /uL]	11.4	[%]
BASO	0.15	[10 <sup>3</sup> /uL]	6.1	[%]
IG	0.31	[10 <sup>3</sup> /uL]	12.6	[%]

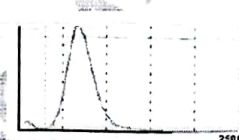
WDF



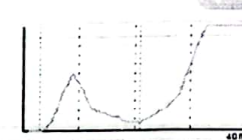
WDF - CBC



RBC



PLT



WBC IP Message

RBC IP Message

PLT IP Message

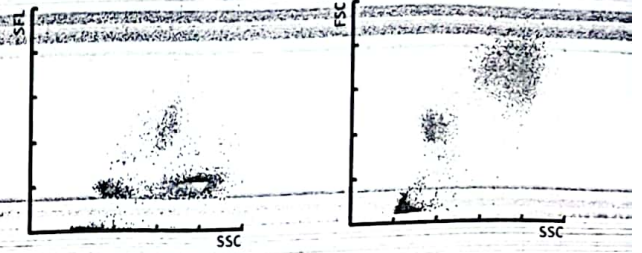


Sample No.: QC-22661402 Adapter: Pos: 2022/12/17 15:06:53 WB  
 Patient ID: Ward: Doctor:  
 Name: Birth: Sex:  
 Sample Comment: Nickname: XN-L

WDF

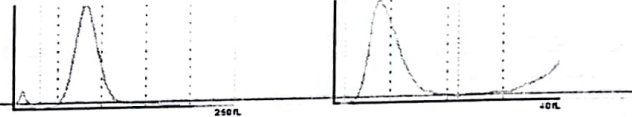
WDF-CBC

WBC	6.92	[10 <sup>3</sup> /uL]		
RBC	4.29	[10 <sup>6</sup> /uL]		
HGB	12.5	[g/dL]		
HCT	35.3	[%]		
MCV	82.3	[fL]		
MCH	29.1	[pg]		
MCHC	35.4	[g/dL]		
PLT	258	[10 <sup>3</sup> /uL]		
RDW-SD	46.7	[fL]		
RDW-CV	15.7	[%]		
PDW	9.1	[fL]		
MPV	9.9	[fL]		
P-LCR	21.3	[%]		
PCT	0.26	[%]		
NEUT	3.40	[10 <sup>3</sup> /uL]	49.2	[%]
LYMPH	1.66	[10 <sup>3</sup> /uL]	24.0	[%]
MONO	0.57	[10 <sup>3</sup> /uL]	8.2	[%]
EO	0.81	[10 <sup>3</sup> /uL]	11.7	[%]
BASO	0.48	[10 <sup>3</sup> /uL]	6.9	[%]
IG	0.90	[10 <sup>3</sup> /uL]	13.0	[%]



RBC

PLT



WBC IP Message

RBC IP Message

PLT IP Message

*Handwritten signature*

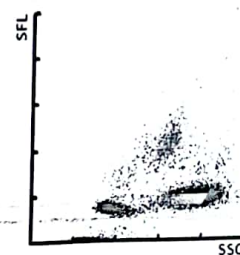
Sample No.: QC-22661403  
 Patient ID:  
 Name:  
 Sample Comment:

Ward: Adapter:

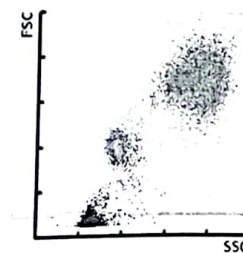
Pos.: 2022/12/17 15:04:52 WB  
 Doctor:  
 Birth: Sex:  
 Nickname: XN-L

WBC	16.45	[10 <sup>3</sup> /uL]		
RBC	5.34	[10 <sup>6</sup> /uL]		
HGB	16.5	[g/dL]		
HCT	46.2	[%]		
MCV	86.5	[fL]		
MCH	30.9	[pg]		
MCHC	35.7	[g/dL]		
PLT	608	[10 <sup>3</sup> /uL]		
RDW-SD	45.0	[fL]		
RDW-CV	14.4	[%]		
PDW	8.9	[fL]		
MPV	9.6	[fL]		
P-LCR	18.5	[%]		
PCT	0.59	[%]		
NEUT	8.30	[10 <sup>3</sup> /uL]	50.5	[%]
LYMPH	3.34	[10 <sup>3</sup> /uL]	20.3	[%]
MONO	1.36	[10 <sup>3</sup> /uL]	8.3	[%]
EO	2.34	[10 <sup>3</sup> /uL]	14.2	[%]
BA50	1.11	[10 <sup>3</sup> /uL]	6.7	[%]
IG	2.27	[10 <sup>3</sup> /uL]	13.8	[%]

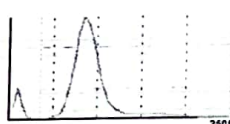
WDF



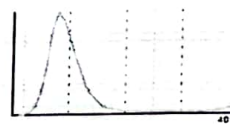
WDF - CBC



RBC



PLT



WBC IP Message

RBC IP Message

PLT IP Message

