

Lab : 887

Cycle No : 230104

Lab Name : HEER CLINICAL LABORATORY

Sample No : 02

Report Date : 19/05/2023

Sample Date : 14/04/2023

Biochemistry, Albumin, g/dL

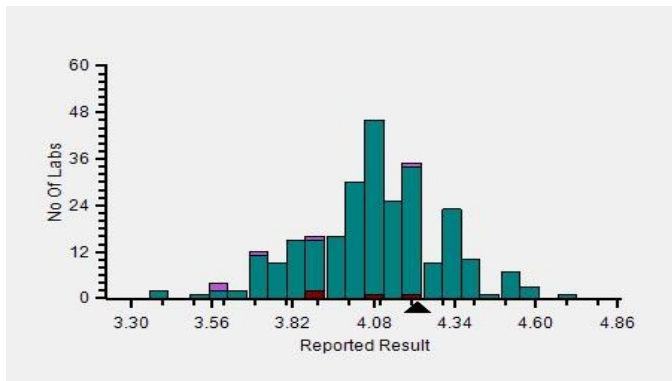
Comparative Statistics

	N	Mean	SD	CV%	Excluded
All Methods	280	4.08	0.26	6.47	4
Bromocresol Green (BCG) - (Your Method)	275	4.08	0.26	6.42	4
Mindray BS-240 - (Your Analyzer)	4	4.02	0.16	3.91	0

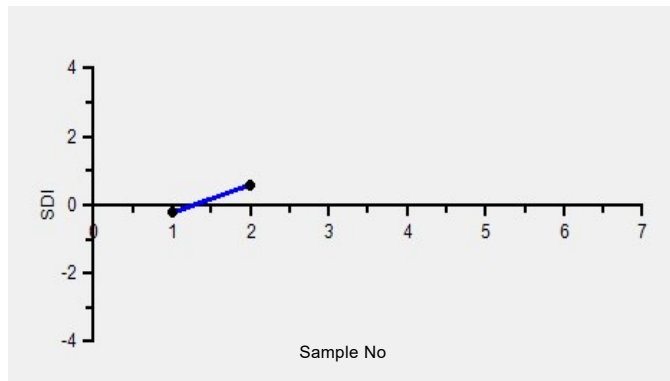
Your Result	4.22	SDI / z-Score	0.59
Assigned Value	4.08	Average SDI	0.18
SDPA	0.245	Uncertainty of AV	0.11
Standard Unit Result Val	4.22	%DEV	3.36

Note : # - Not evaluated / Bimodal distribution
X : SDI more than 4

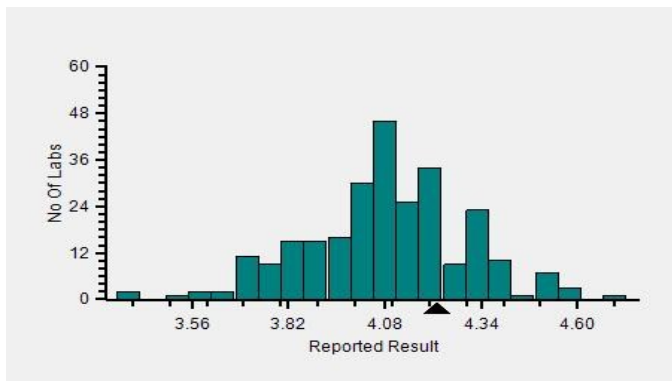
Frequency Histogram



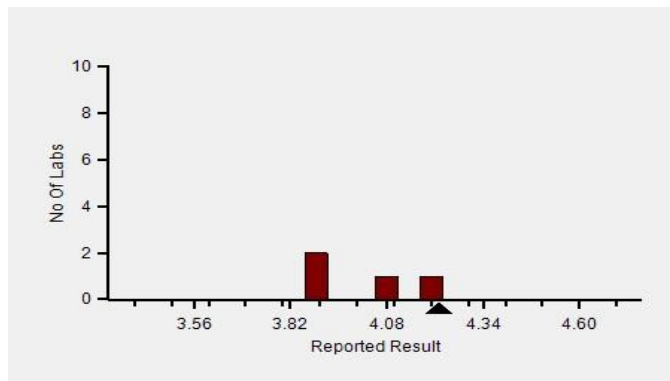
Z-Score Trend - Within Round



Frequency Histogram Your Method



Frequency Histogram Your Analyzer



Lab : 887

Cycle No : 230104

Lab Name : HEER CLINICAL LABORATORY

Sample No : 02

Report Date : 19/05/2023

Sample Date : 14/04/2023

Frequency Histogram Your Method



Note : SDI with * marked are not considered for evaluation

Comments :

Biochemistry, Albumin		N	Mean	SD	CV%	Excluded
	All Analyzer	280	4.08	0.26	6.47	4
Your Analyzer :	Mindray BS-240	4	4.02	0.16	3.91	-
	Erba EM 200	34	4.06	0.26	6.45	-
	Fuji Dri-Chem NX500/i	34	4.31	0.31	7.12	2
	Roche cobas c 311	31	4.03	0.17	4.20	-
	Roche cobas c 111	21	4.22	0.20	4.65	-
	Fuji Dri-Chem 4000i	14	4.24	0.21	4.96	-
	Roche cobas INTEGRA	14	4.13	0.10	2.33	-
	Fuji Dri-Chem NX600	14	4.14	0.09	2.05	-

Remarks: Interpretation of your reports

- a) If your SDI lies between +/- 2.0 SDI then your results are well within limits.
- b) If your SDI lies between +/-2.0 to 2.99 SDI then it is a warning alert flag.
- c) If your SDI is +/- 3.0 SDI or more then it is an action alert flag.

Interpretation when an analyte is reported for multiple samples in a Round:

- a) Reported on 2 samples:
 - Two out of two pass - Acceptable performance
 - One out of two pass - Review for random error & take action if appropriate
 - Both failed - Unacceptable performance, Review for systematic error
- b) Reported on 3 samples:
 - All pass - Acceptable performance
 - Two out of three pass - Review for random error & take action if appropriate
 - One out of three pass - Unacceptable performance, Review for systematic error
 - All failed - Unacceptable performance, Review for systematic error



Lab : 887

Cycle No : 230104

Lab Name : HEER CLINICAL LABORATORY

Sample No : 02

Report Date : 19/05/2023

Sample Date : 14/04/2023

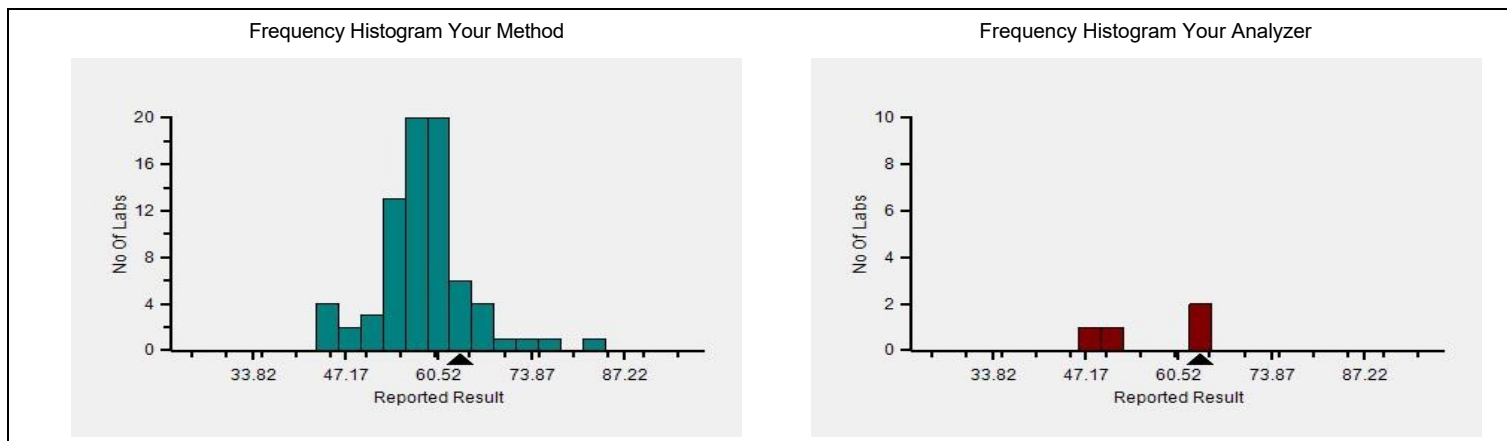
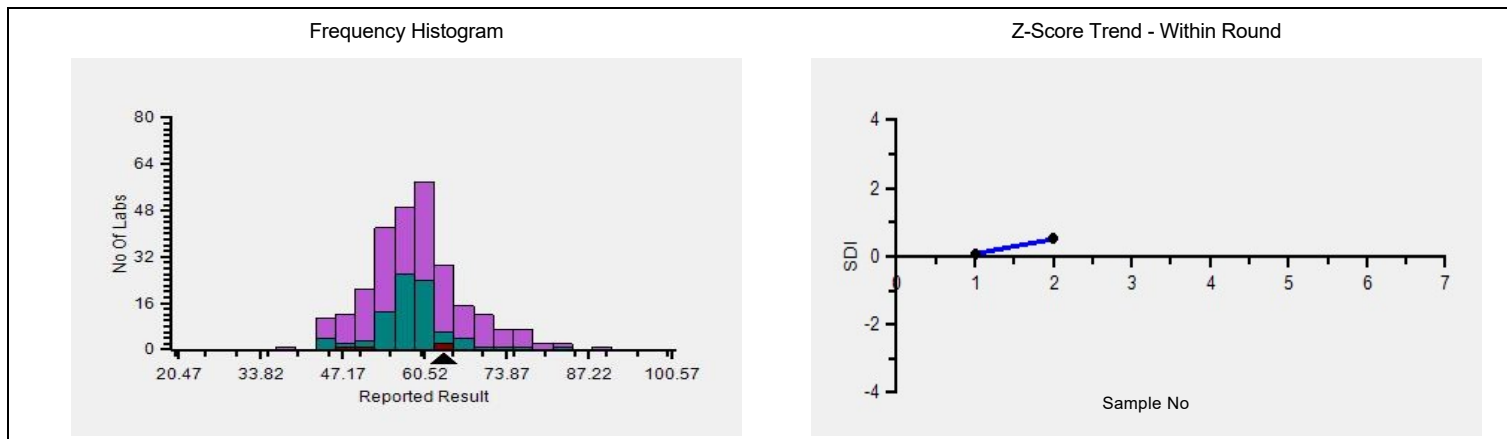
Biochemistry, ALP, U/L

Comparative Statistics

	N	Mean	SD	CV%	Excluded
All Methods	277	60.52	13.35	22.05	4
PNPP, AMP Buffer -IFCC - (Your Method)	86	58.35	6.28	10.77	0
Mindray BS-240 - (Your Analyzer)	4	56.87	8.29	14.58	0

Your Result	63.59	SDI / z-Score	0.51
Assigned Value	58.43	Average SDI	0.30
SDPA	10.100	Uncertainty of AV	0.51
Standard Unit Result Val	63.59	%DEV	8.97

Note : # - Not evaluated / Bimodal distribution
X : SDI more than 4



Lab : 887

Cycle No : 230104

Lab Name : HEER CLINICAL LABORATORY

Sample No : 02

Report Date : 19/05/2023

Sample Date : 14/04/2023

Frequency Histogram Your Method



Note : SDI with * marked are not considered for evaluation

Comments :

Biochemistry, ALP		N	Mean	SD	CV%	Excluded
	All Analyzer	277	60.52	13.35	22.05	4
Your Analyzer :	Mindray BS-240	4	56.87	8.29	14.58	-
	Fuji Dri-Chem NX500/i	35	62.77	7.19	11.46	-
	Erba EM 200	33	58.14	6.33	10.89	2
	Roche cobas c 311	31	59.94	6.08	10.14	-
	Roche cobas c 111	20	58.74	6.51	11.08	-
	Fuji Dri-Chem 4000i	14	62.21	7.62	12.25	-
	Roche cobas INTEGRA	14	57.80	5.58	9.65	-
	Fuji Dri-Chem NX600	14	58.14	9.18	15.79	-

Remarks: Interpretation of your reports

- a) If your SDI lies between +/- 2.0 SDI then your results are well within limits.
- b) If your SDI lies between +/-2.0 to 2.99 SDI then it is a warning alert flag.
- c) If your SDI is +/- 3.0 SDI or more then it is an action alert flag.

Interpretation when an analyte is reported for multiple samples in a Round:

a) Reported on 2 samples:

- Two out of two pass - Acceptable performance
- One out of two pass - Review for random error & take action if appropriate
- Both failed - Unacceptable performance, Review for systematic error

b) Reported on 3 samples:

- All pass - Acceptable performance
- Two out of three pass - Review for random error & take action if appropriate
- One out of three pass - Unacceptable performance, Review for systematic error
- All failed - Unacceptable performance, Review for systematic error



Lab : 887

Cycle No : 230104

Lab Name : HEER CLINICAL LABORATORY

Sample No : 02

Report Date : 19/05/2023

Sample Date : 14/04/2023

Biochemistry, ALT, U/L

Comparative Statistics

	N	Mean	SD	CV%	Excluded
All Methods	281	9.86	2.96	30.01	6
UV with P5P - (Your Method)	24	9.67	2.50	25.82	0
Mindray BS-240 - (Your Analyzer)	4	7.37	3.24	43.93	0

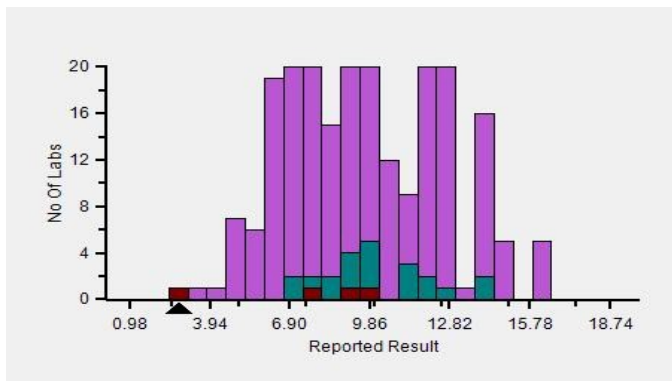
Evaluation Based On - Equipment wise Peer Grouping

Your Result	2.77	SDI / z-Score	-2.62
Assigned Value	7.67	Average SDI	-1.93
SDPA	1.871	Uncertainty of AV	0.47
Standard Unit Result Val	2.77	%DEV	-71.34

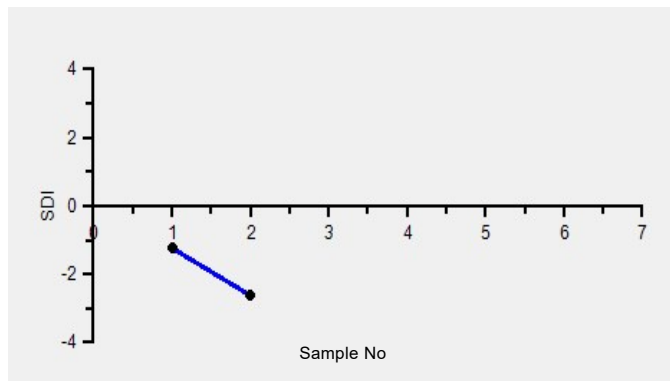
Note : # - Not evaluated / Bimodal distribution

X : SDI more than 4

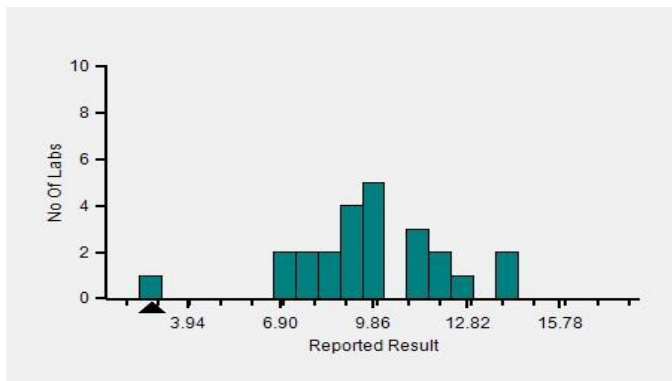
Frequency Histogram



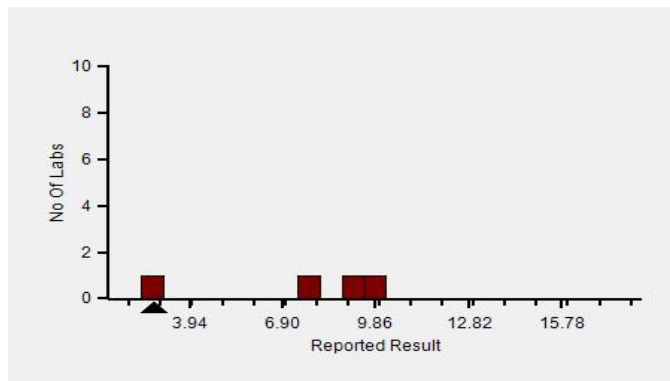
Z-Score Trend - Within Round



Frequency Histogram Your Method



Frequency Histogram Your Analyzer



Lab : 887

Cycle No : 230104

Lab Name : HEER CLINICAL LABORATORY

Sample No : 02

Report Date : 19/05/2023

Sample Date : 14/04/2023

Frequency Histogram Your Method



Note : SDI with * marked are not considered for evaluation

Comments :

Biochemistry, ALT		N	Mean	SD	CV%	Excluded
	All Analyzer	281	9.86	2.96	30.01	6
Your Analyzer :	Mindray BS-240	4	7.37	3.24	43.93	-
	Erba EM 200	35	8.69	2.41	27.73	4
	Fuji Dri-Chem NX500/i	33	13.39	1.52	11.34	-
	Roche cobas c 311	31	8.63	1.41	16.33	-
	Roche cobas c 111	21	7.91	1.51	19.12	-
	Fuji Dri-Chem 4000i	15	13.13	1.81	13.76	-
	Roche cobas INTEGRA	14	6.39	0.89	13.95	-
	Fuji Dri-Chem NX600	14	12.07	1.07	8.88	-

Remarks: Interpretation of your reports

- a) If your SDI lies between +/- 2.0 SDI then your results are well within limits.
- b) If your SDI lies between +/-2.0 to 2.99 SDI then it is a warning alert flag.
- c) If your SDI is +/- 3.0 SDI or more then it is an action alert flag.

Interpretation when an analyte is reported for multiple samples in a Round:

- a) Reported on 2 samples:
 - Two out of two pass - Acceptable performance
 - One out of two pass - Review for random error & take action if appropriate
 - Both failed - Unacceptable performance, Review for systematic error
- b) Reported on 3 samples:
 - All pass - Acceptable performance
 - Two out of three pass - Review for random error & take action if appropriate
 - One out of three pass - Unacceptable performance, Review for systematic error
 - All failed - Unacceptable performance, Review for systematic error



Lab : 887

Cycle No : 230104

Lab Name : HEER CLINICAL LABORATORY

Sample No : 02

Report Date : 19/05/2023

Sample Date : 14/04/2023

Biochemistry, Amylase, U/L

Comparative Statistics

	N	Mean	SD	CV%	Excluded
All Methods	181	69.62	13.15	18.89	5
IFCC - (Your Method)	12	69.97	15.24	21.78	0
Mindray BS-240 - (Your Analyzer)	2	67.54	--	--	0

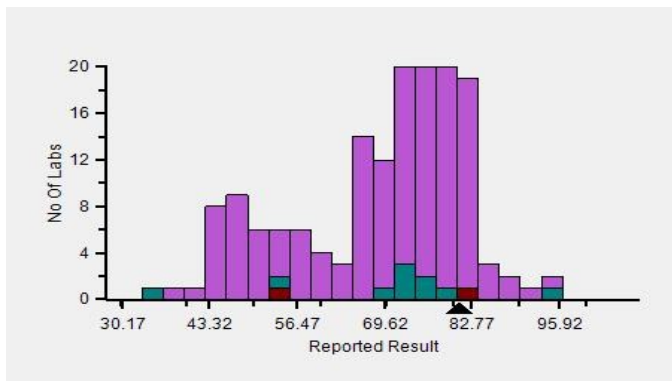
Evaluation Based On - Equipment wise Peer Grouping

Your Result	80.85	SDI / z-Score	1.40
Assigned Value	59.30	Average SDI	1.51
SDPA	15.369	Uncertainty of AV	6.08
Standard Unit Result Val	80.85	%DEV	15.55

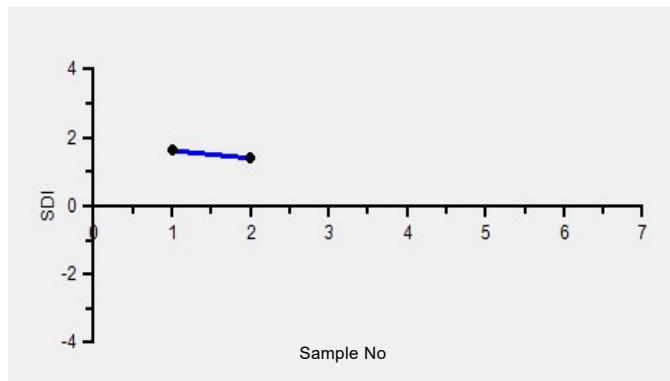
Note : # - Not evaluated / Bimodal distribution

X : SDI more than 4

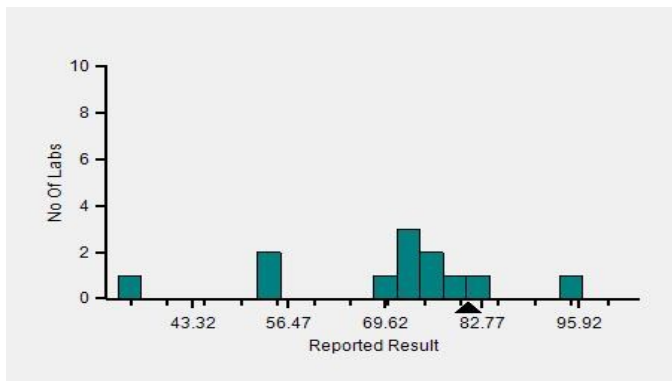
Frequency Histogram



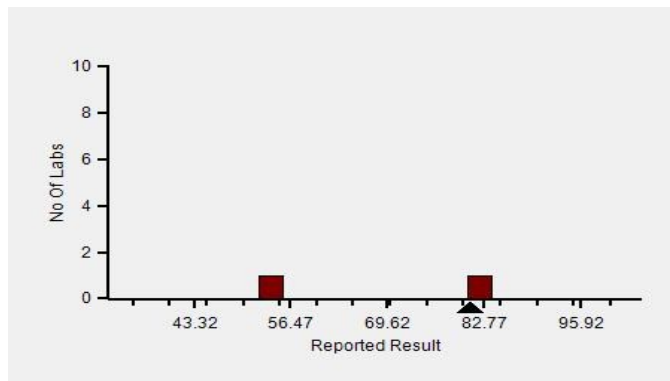
Z-Score Trend - Within Round



Frequency Histogram Your Method



Frequency Histogram Your Analyzer



Lab : 887

Cycle No : 230104

Lab Name : HEER CLINICAL LABORATORY

Sample No : 02

Report Date : 19/05/2023

Sample Date : 14/04/2023

Frequency Histogram Your Method



Note : SDI with * marked are not considered for evaluation

Comments :

Biochemistry, Amylase		N	Mean	SD	CV%	Excluded
	All Analyzer	181	69.62	13.15	18.89	5
Your Analyzer :	Mindray BS-240	2	67.54	-	-	-
	Fuji Dri-Chem NX500/i	27	80.15	6.17	7.70	1
	Roche cobas c 311	17	73.21	3.32	4.54	-
	Erba EM 200	15	48.28	6.42	13.30	1
	Fuji Dri-Chem NX600	13	80.08	4.91	6.13	1
	Fuji Dri-Chem 4000i	11	78.09	4.68	5.99	-
	Roche cobas c 111	9	73.93	3.00	4.06	1
	Roche cobas 6000	8	73.03	1.46	2.00	-

Remarks: Interpretation of your reports

- a) If your SDI lies between +/- 2.0 SDI then your results are well within limits.
- b) If your SDI lies between +/-2.0 to 2.99 SDI then it is a warning alert flag.
- c) If your SDI is +/- 3.0 SDI or more then it is an action alert flag.

Interpretation when an analyte is reported for multiple samples in a Round:

a) Reported on 2 samples:

- Two out of two pass - Acceptable performance
- One out of two pass - Review for random error & take action if appropriate
- Both failed - Unacceptable performance, Review for systematic error

b) Reported on 3 samples:

- All pass - Acceptable performance
- Two out of three pass - Review for random error & take action if appropriate
- One out of three pass - Unacceptable performance, Review for systematic error
- All failed - Unacceptable performance, Review for systematic error



Lab : 887

Cycle No : 230104

Lab Name : HEER CLINICAL LABORATORY

Sample No : 02

Report Date : 19/05/2023

Sample Date : 14/04/2023

Biochemistry, AST, U/L

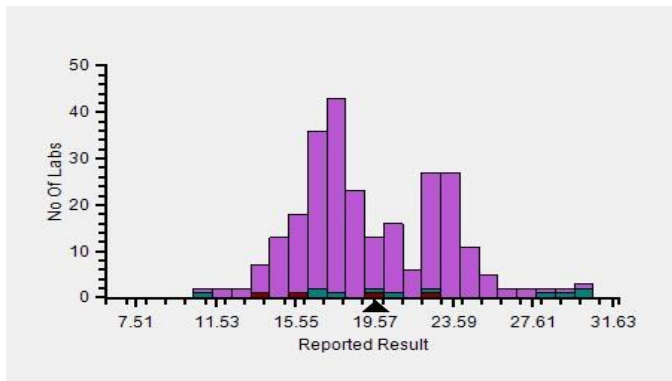
Comparative Statistics

	N	Mean	SD	CV%	Excluded
All Methods	274	19.57	4.02	20.56	8
UV with P5P - (Your Method)	16	23.41	7.02	29.99	1
Mindray BS-240 - (Your Analyzer)	4	17.78	3.66	20.58	0

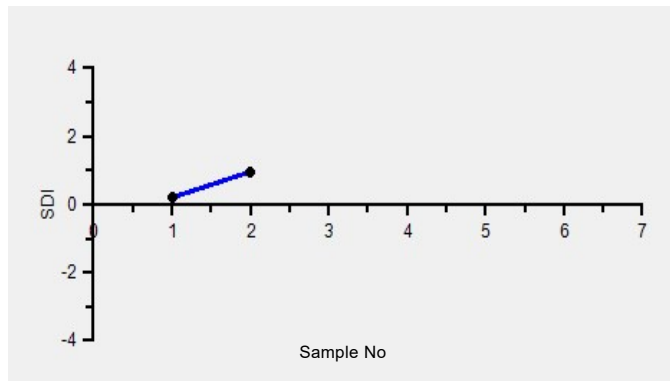
Your Result	19.62	SDI / z-Score	0.96
Assigned Value	15.30	Average SDI	0.58
SDPA	4.479	Uncertainty of AV	2.50
Standard Unit Result Val	19.62	%DEV	-16.19

Note : # - Not evaluated / Bimodal distribution
X : SDI more than 4

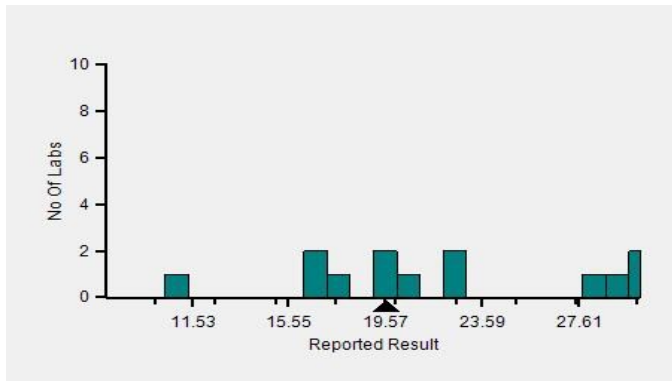
Frequency Histogram



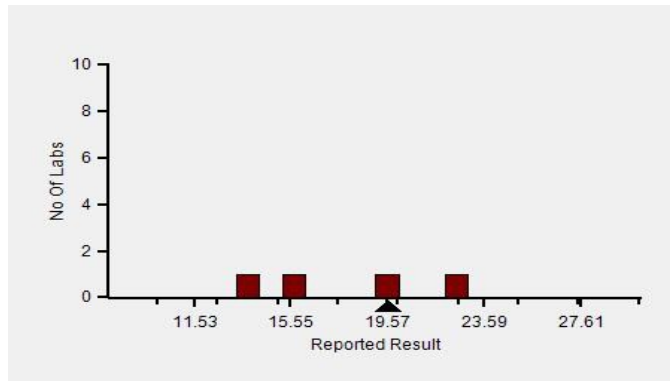
Z-Score Trend - Within Round



Frequency Histogram Your Method



Frequency Histogram Your Analyzer



Lab : 887

Cycle No : 230104

Lab Name : HEER CLINICAL LABORATORY

Sample No : 02

Report Date : 19/05/2023

Sample Date : 14/04/2023

Frequency Histogram Your Method



Note : SDI with * marked are not considered for evaluation

Comments :

Biochemistry, AST		N	Mean	SD	CV%	Excluded
	All Analyzer	274	19.57	4.02	20.56	8
Your Analyzer :	Mindray BS-240	4	17.78	3.66	20.58	-
	Erba EM 200	34	17.33	2.67	15.38	1
	Fuji Dri-Chem NX500/i	32	23.34	1.38	5.92	-
	Roche cobas c 311	29	17.13	1.32	7.70	-
	Roche cobas c 111	21	17.74	1.54	8.69	-
	Fuji Dri-Chem 4000i	15	22.50	0.76	3.38	1
	Roche cobas INTEGRA	14	16.30	1.29	7.88	-
	Fuji Dri-Chem NX600	14	22.71	0.91	4.02	-

Remarks: Interpretation of your reports

- a) If your SDI lies between +/- 2.0 SDI then your results are well within limits.
- b) If your SDI lies between +/-2.0 to 2.99 SDI then it is a warning alert flag.
- c) If your SDI is +/- 3.0 SDI or more then it is an action alert flag.

Interpretation when an analyte is reported for multiple samples in a Round:

- a) Reported on 2 samples:
 - Two out of two pass - Acceptable performance
 - One out of two pass - Review for random error & take action if appropriate
 - Both failed - Unacceptable performance, Review for systematic error
- b) Reported on 3 samples:
 - All pass - Acceptable performance
 - Two out of three pass - Review for random error & take action if appropriate
 - One out of three pass - Unacceptable performance, Review for systematic error
 - All failed - Unacceptable performance, Review for systematic error

Dr Puneet Kumar Nigam

Dr Puneet Kumar Nigam
PT coordinator & Technical Manager, MHL EQAS
Unit No. 409-416.
Commercial Building - 1A
Kohinoor Mall, Kirool Road, Kurla (W),
Mumbai - 400070

This is a computer generated report hence signature is not required



PC-1022