

Lab : 887

Cycle No : 230104

Lab Name : HEER CLINICAL LABORATORY

Sample No : 02

Report Date : 19/05/2023

Sample Date : 14/04/2023

Biochemistry, Bilirubin Direct, mg/dl

Comparative Statistics

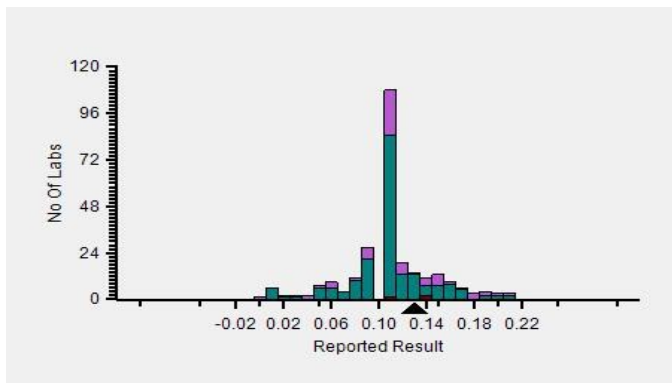
	N	Mean	SD	CV%	Excluded
All Methods	277	0.10	0.04	33.65	13
Diazotization - (Your Method)	205	0.10	0.03	31.37	6
Mindray BS-240 - (Your Analyzer)	3	0.12	0.02	14.17	0

Evaluation Based On - Equipment wise Peer Grouping

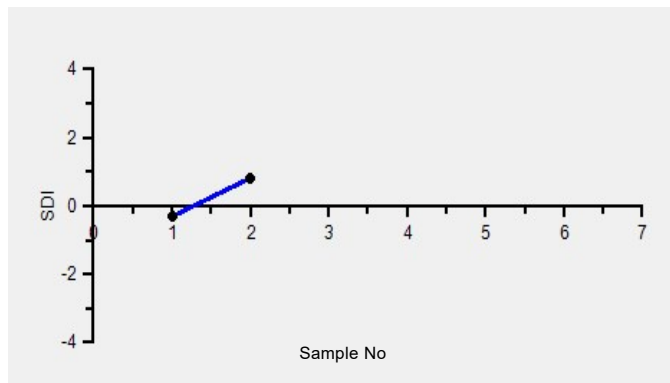
Your Result	0.13	SDI / z-Score	0.82
Assigned Value	0.10	Average SDI	0.26
SDPA	0.034	Uncertainty of AV	0.01
Standard Unit Result Val	0.13	%DEV	27.45

Note : # - Not evaluated / Bimodal distribution
X : SDI more than 4

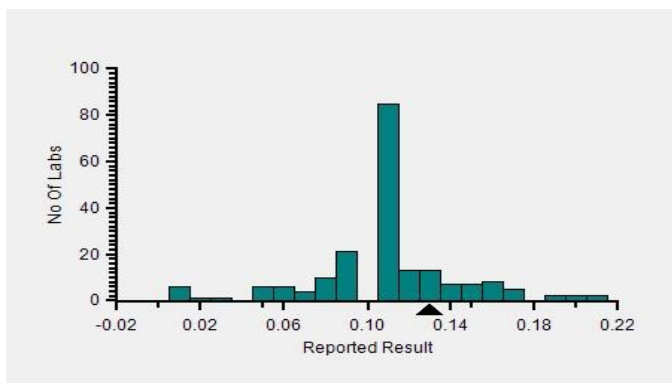
Frequency Histogram



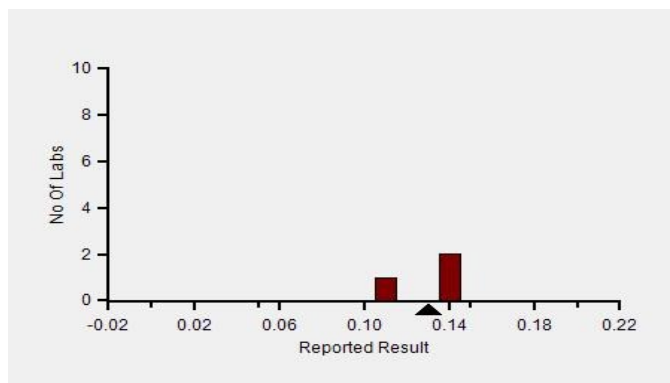
Z-Score Trend - Within Round



Frequency Histogram Your Method



Frequency Histogram Your Analyzer



Lab : 887

Cycle No : 230104

Lab Name : HEER CLINICAL LABORATORY

Sample No : 02

Report Date : 19/05/2023

Sample Date : 14/04/2023

Frequency Histogram Your Method



Note : SDI with * marked are not considered for evaluation

Comments :

Biochemistry, Bilirubin Direct		N	Mean	SD	CV%	Excluded
	All Analyzer	277	0.10	0.04	33.65	13
Your Analyzer :	Mindray BS-240	3	0.12	0.02	14.17	-
	Fuji Dri-Chem NX500/i	34	0.10	0.03	29.59	1
	Erba EM 200	32	0.10	0.04	38.78	1
	Roche cobas c 311	30	0.11	0.04	38.53	-
	Roche cobas c 111	20	0.12	0.02	14.78	-
	Fuji Dri-Chem 4000i	15	0.10	0.00	0.00	-
	Roche cobas INTEGRA	14	0.09	0.01	9.57	-
	Fuji Dri-Chem NX600	14	0.10	0.00	0.00	-

Remarks: Interpretation of your reports

- a) If your SDI lies between +/- 2.0 SDI then your results are well within limits.
- b) If your SDI lies between +/-2.0 to 2.99 SDI then it is a warning alert flag.
- c) If your SDI is +/- 3.0 SDI or more then it is an action alert flag.

Interpretation when an analyte is reported for multiple samples in a Round:

- a) Reported on 2 samples:
 - Two out of two pass - Acceptable performance
 - One out of two pass - Review for random error & take action if appropriate
 - Both failed - Unacceptable performance, Review for systematic error
- b) Reported on 3 samples:
 - All pass - Acceptable performance
 - Two out of three pass - Review for random error & take action if appropriate
 - One out of three pass - Unacceptable performance, Review for systematic error
 - All failed - Unacceptable performance, Review for systematic error



Lab : 887

Cycle No : 230104

Lab Name : HEER CLINICAL LABORATORY

Sample No : 02

Report Date : 19/05/2023

Sample Date : 14/04/2023

Biochemistry, Bilirubin Total, mg/dl

Comparative Statistics

	N	Mean	SD	CV%	Excluded
All Methods	278	0.25	0.11	44.05	11
Diazotization - (Your Method)	102	0.25	0.09	34.41	3
Mindray BS-240 - (Your Analyzer)	4	0.22	0.01	3.64	0

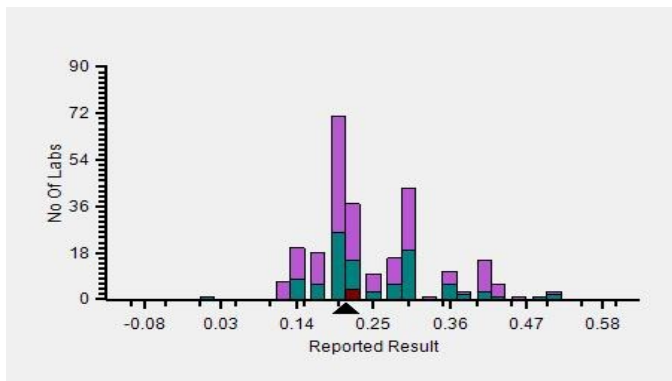
Evaluation Based On - Equipment wise Peer Grouping

Your Result	0.21	SDI / z-Score	-0.81
Assigned Value	0.26	Average SDI	-1.42
SDPA	0.067	Uncertainty of AV	0.02
Standard Unit Result Val	0.21	%DEV	-14.98

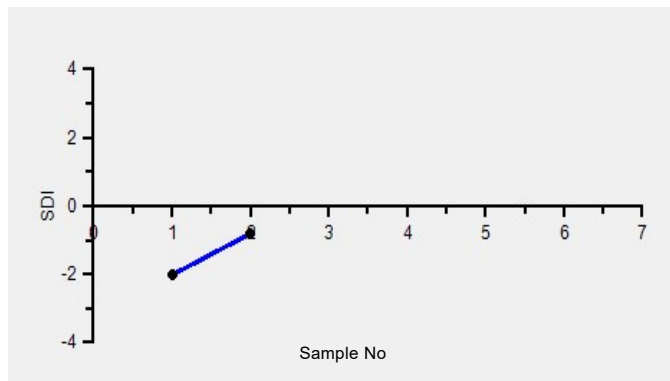
Note : # - Not evaluated / Bimodal distribution

X : SDI more than 4

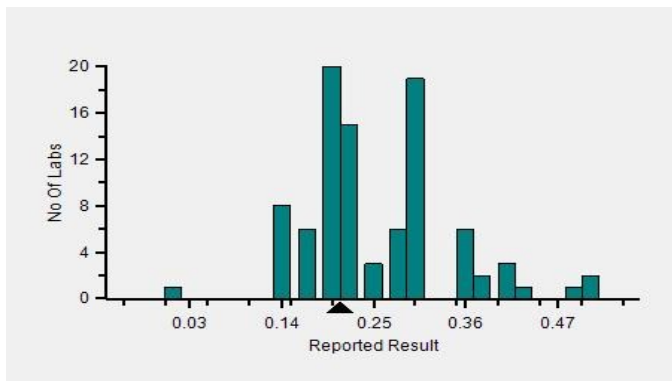
Frequency Histogram



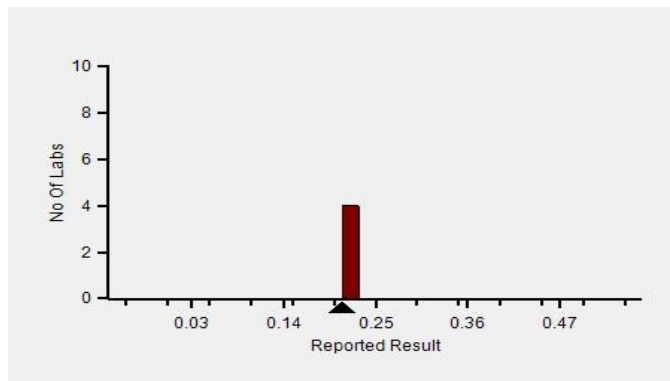
Z-Score Trend - Within Round



Frequency Histogram Your Method



Frequency Histogram Your Analyzer



Lab : 887

Cycle No : 230104

Lab Name : HEER CLINICAL LABORATORY

Sample No : 02

Report Date : 19/05/2023

Sample Date : 14/04/2023

Frequency Histogram Your Method



Note : SDI with * marked are not considered for evaluation

Comments :

Biochemistry, Bilirubin Total		N	Mean	SD	CV%	Excluded
	All Analyzer	278	0.25	0.11	44.05	11
Your Analyzer :	Mindray BS-240	4	0.22	0.01	3.64	-
	Fuji Dri-Chem NX500/i	34	0.30	0.10	31.67	1
	Erba EM 200	33	0.23	0.07	31.14	1
	Roche cobas c 311	30	0.18	0.04	20.57	-
	Roche cobas c 111	20	0.20	0.05	24.62	-
	Fuji Dri-Chem 4000i	15	0.30	0.07	21.67	-
	Roche cobas INTEGRA	14	0.19	0.04	20.21	-
	Fuji Dri-Chem NX600	14	0.29	0.05	18.53	-

Remarks: Interpretation of your reports

- a) If your SDI lies between +/- 2.0 SDI then your results are well within limits.
- b) If your SDI lies between +/-2.0 to 2.99 SDI then it is a warning alert flag.
- c) If your SDI is +/- 3.0 SDI or more then it is an action alert flag.

Interpretation when an analyte is reported for multiple samples in a Round:

- a) Reported on 2 samples:
 - Two out of two pass - Acceptable performance
 - One out of two pass - Review for random error & take action if appropriate
 - Both failed - Unacceptable performance, Review for systematic error
- b) Reported on 3 samples:
 - All pass - Acceptable performance
 - Two out of three pass - Review for random error & take action if appropriate
 - One out of three pass - Unacceptable performance, Review for systematic error
 - All failed - Unacceptable performance, Review for systematic error



Lab : 887

Cycle No : 230104

Lab Name : HEER CLINICAL LABORATORY

Sample No : 02

Report Date : 19/05/2023

Sample Date : 14/04/2023

Biochemistry, Calcium, mg/dl

Comparative Statistics

	N	Mean	SD	CV%	Excluded
All Methods	257	8.49	0.71	8.35	7
Arsenazo III - (Your Method)	112	8.82	0.72	8.19	4
Mindray BS-240 - (Your Analyzer)	4	9.27	0.58	6.22	0

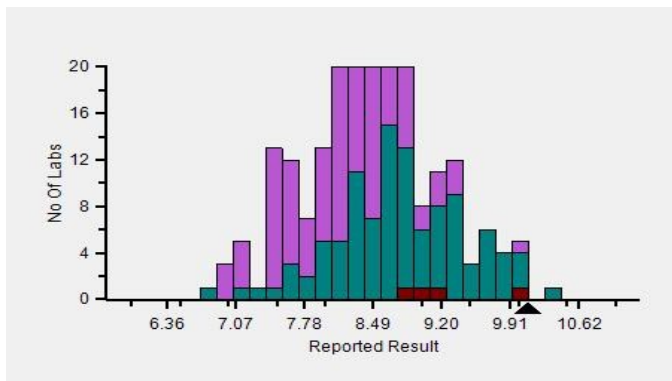
Evaluation Based On - Equipment wise Peer Grouping

Your Result	10.10	SDI / z-Score	1.91
Assigned Value	8.80	Average SDI	1.13
SDPA	0.683	Uncertainty of AV	0.20
Standard Unit Result Val	10.10	%DEV	14.58

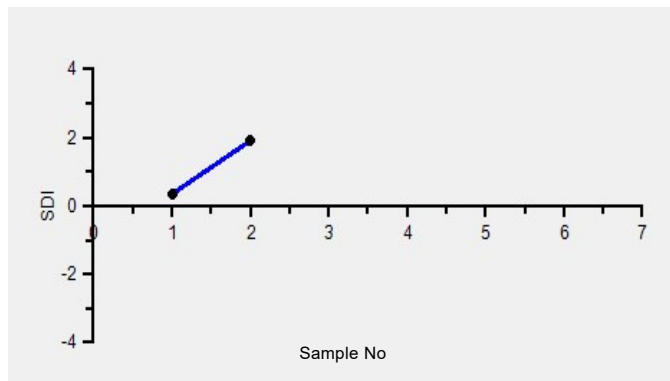
Note : # - Not evaluated / Bimodal distribution

X : SDI more than 4

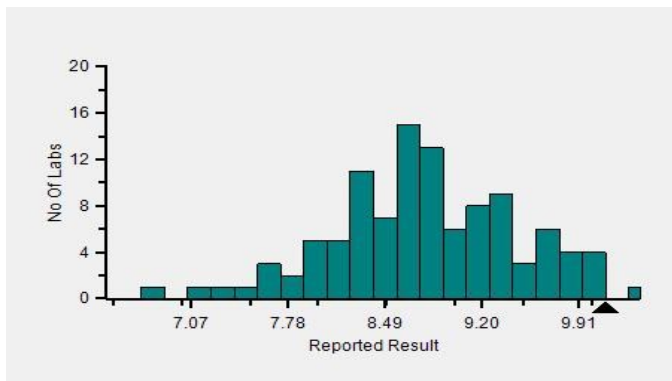
Frequency Histogram



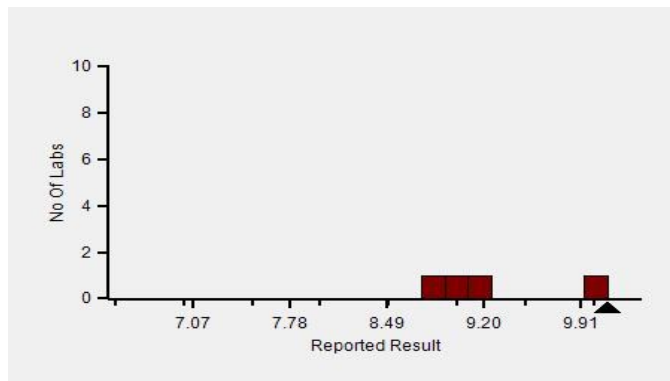
Z-Score Trend - Within Round



Frequency Histogram Your Method



Frequency Histogram Your Analyzer



Lab : 887

Cycle No : 230104

Lab Name : HEER CLINICAL LABORATORY

Sample No : 02

Report Date : 19/05/2023

Sample Date : 14/04/2023

Frequency Histogram Your Method



Note : SDI with * marked are not considered for evaluation

Comments :

Biochemistry, Calcium		N	Mean	SD	CV%	Excluded
	All Analyzer	257	8.49	0.71	8.35	7
Your Analyzer :	Mindray BS-240	4	9.27	0.58	6.22	-
	Fuji Dri-Chem NX500/i	33	7.72	0.59	7.69	1
	Roche cobas c 311	31	8.55	0.28	3.29	-
	Erba EM 200	28	8.99	0.65	7.24	1
	Roche cobas c 111	16	8.59	0.48	5.62	-
	Fuji Dri-Chem NX600	15	7.78	0.35	4.46	-
	Fuji Dri-Chem 4000i	13	7.96	0.33	4.18	-
	Roche cobas INTEGRA	13	8.39	0.14	1.65	-

Remarks: Interpretation of your reports

- a) If your SDI lies between +/- 2.0 SDI then your results are well within limits.
- b) If your SDI lies between +/-2.0 to 2.99 SDI then it is a warning alert flag.
- c) If your SDI is +/- 3.0 SDI or more then it is an action alert flag.

Interpretation when an analyte is reported for multiple samples in a Round:

- a) Reported on 2 samples:
 - Two out of two pass - Acceptable performance
 - One out of two pass - Review for random error & take action if appropriate
 - Both failed - Unacceptable performance, Review for systematic error
- b) Reported on 3 samples:
 - All pass - Acceptable performance
 - Two out of three pass - Review for random error & take action if appropriate
 - One out of three pass - Unacceptable performance, Review for systematic error
 - All failed - Unacceptable performance, Review for systematic error



Lab : 887

Cycle No : 230104

Lab Name : HEER CLINICAL LABORATORY

Sample No : 02

Report Date : 19/05/2023

Sample Date : 14/04/2023

Biochemistry, Chloride, mmol/L

Comparative Statistics

	N	Mean	SD	CV%	Excluded
All Methods	248	99.79	5.11	5.12	4
ISE indirect - (Your Method)	65	97.41	4.73	4.85	0
Sensa Core ST100 - (Your Analyzer)	1	--	--	--	0

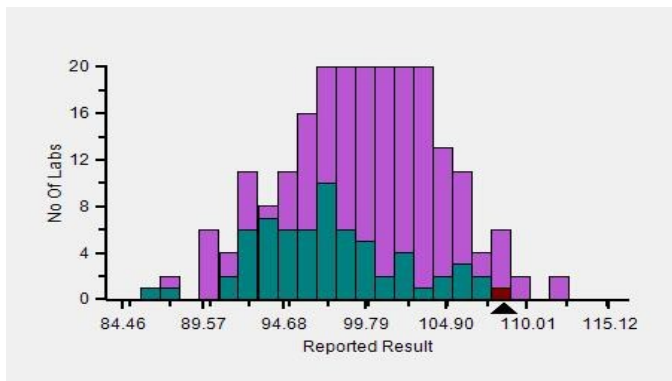
Evaluation Based On - Method wise Peer Grouping

Your Result	108.60	SDI / z-Score	2.42
Assigned Value	97.48	Average SDI	1.76
SDPA	4.586	Uncertainty of AV	0.69
Standard Unit Result Val	108.60	%DEV	11.49

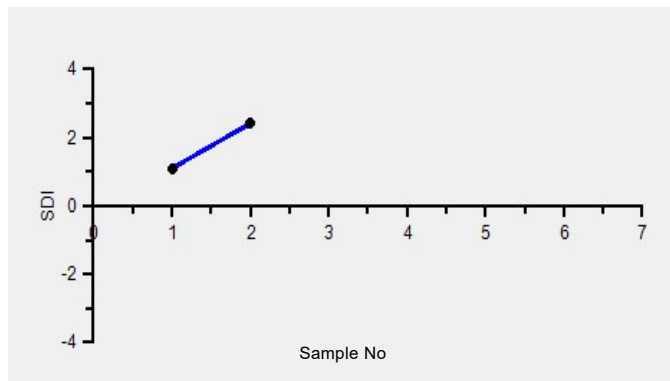
Note : # - Not evaluated / Bimodal distribution

X : SDI more than 4

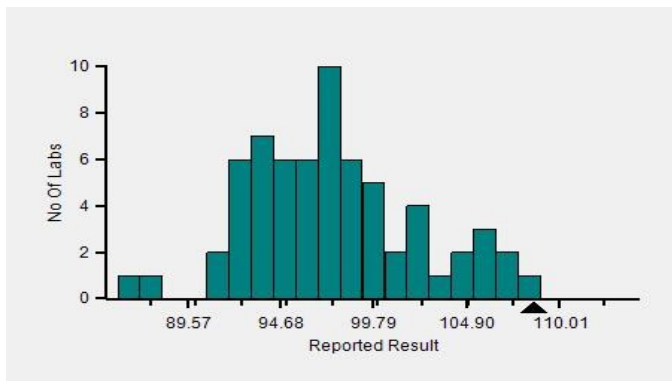
Frequency Histogram



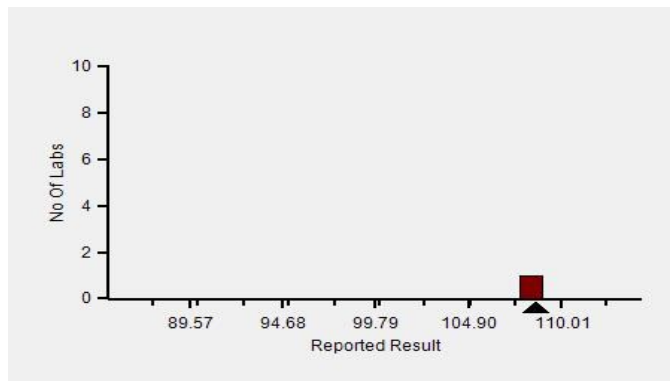
Z-Score Trend - Within Round



Frequency Histogram Your Method



Frequency Histogram Your Analyzer



Lab : 887

Cycle No : 230104

Lab Name : HEER CLINICAL LABORATORY

Sample No : 02

Report Date : 19/05/2023

Sample Date : 14/04/2023

Frequency Histogram Your Method



Note : SDI with * marked are not considered for evaluation

Comments :

Biochemistry, Chloride		N	Mean	SD	CV%	Excluded
	All Analyzer	248	99.79	5.11	5.12	4
Your Analyzer :	Sensa Core ST100	1	-	-	-	-
	Fuji Dri-Chem NX500/i	32	99.41	3.64	3.66	-
	Roche cobas c 311	23	96.84	5.74	5.92	-
	Fuji Dri-Chem 4000i	17	97.94	3.31	3.38	-
	Roche AVL 9180	17	98.88	7.51	7.59	1
	Fuji Dri-Chem NX600	17	98.38	1.91	1.94	-
	EasyLyte	12	102.79	4.37	4.26	1
	Roche cobas 6000	8	93.83	3.42	3.64	-

Remarks: Interpretation of your reports

- a) If your SDI lies between +/- 2.0 SDI then your results are well within limits.
- b) If your SDI lies between +/-2.0 to 2.99 SDI then it is a warning alert flag.
- c) If your SDI is +/- 3.0 SDI or more then it is an action alert flag.

Interpretation when an analyte is reported for multiple samples in a Round:

- a) Reported on 2 samples:
 - Two out of two pass - Acceptable performance
 - One out of two pass - Review for random error & take action if appropriate
 - Both failed - Unacceptable performance, Review for systematic error
- b) Reported on 3 samples:
 - All pass - Acceptable performance
 - Two out of three pass - Review for random error & take action if appropriate
 - One out of three pass - Unacceptable performance, Review for systematic error
 - All failed - Unacceptable performance, Review for systematic error



Lab : 887

Cycle No : 230104

Lab Name : HEER CLINICAL LABORATORY

Sample No : 02

Report Date : 19/05/2023

Sample Date : 14/04/2023

Biochemistry, Cholesterol, mg/dl

Comparative Statistics

	N	Mean	SD	CV%	Excluded
All Methods	277	161.35	11.15	6.91	5
CHOD-PAP - (Your Method)	71	159.14	11.02	6.93	1
Mindray BS-240 - (Your Analyzer)	4	165.84	8.45	5.10	0

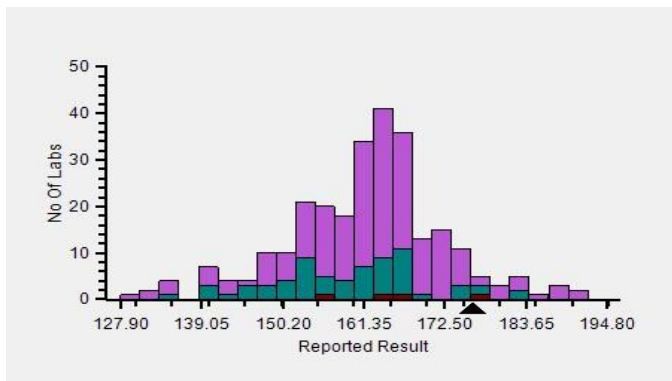
Evaluation Based On - Equipment wise Peer Grouping

Your Result	176.36	SDI / z-Score	0.91
Assigned Value	166.88	Average SDI	0.26
SDPA	10.374	Uncertainty of AV	1.93
Standard Unit Result Val	176.36	%DEV	10.82

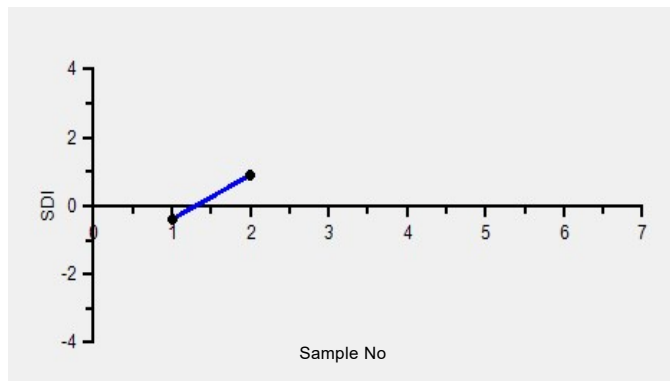
Note : # - Not evaluated / Bimodal distribution

X : SDI more than 4

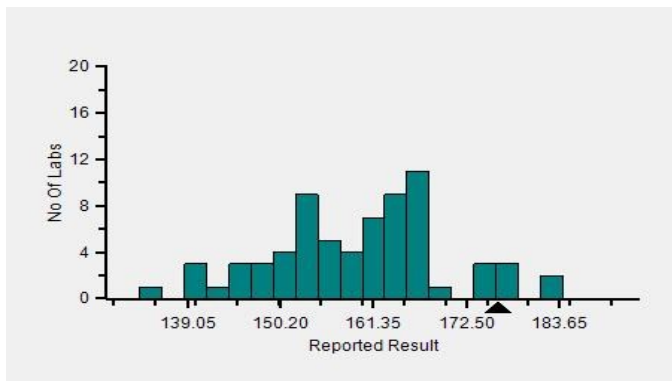
Frequency Histogram



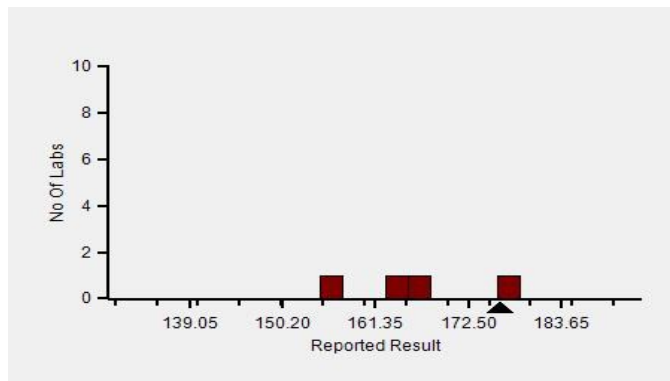
Z-Score Trend - Within Round



Frequency Histogram Your Method



Frequency Histogram Your Analyzer



Lab : 887

Cycle No : 230104

Lab Name : HEER CLINICAL LABORATORY

Sample No : 02

Report Date : 19/05/2023

Sample Date : 14/04/2023

Frequency Histogram Your Method



Note : SDI with * marked are not considered for evaluation

Comments :

Biochemistry, Cholesterol		N	Mean	SD	CV%	Excluded
	All Analyzer	277	161.35	11.15	6.91	5
Your Analyzer :	Mindray BS-240	4	165.84	8.45	5.10	-
	Fuji Dri-Chem NX500/i	33	159.63	13.11	8.21	-
	Erba EM 200	32	158.64	9.10	5.74	1
	Roche cobas c 311	31	165.09	7.66	4.64	1
	Roche cobas c 111	21	166.37	10.53	6.33	1
	Fuji Dri-Chem 4000i	14	160.22	7.85	4.90	-
	Roche cobas INTEGRA	14	162.24	5.15	3.18	-
	Fuji Dri-Chem NX600	13	163.08	5.47	3.35	-

Remarks: Interpretation of your reports

- a) If your SDI lies between +/- 2.0 SDI then your results are well within limits.
- b) If your SDI lies between +/-2.0 to 2.99 SDI then it is a warning alert flag.
- c) If your SDI is +/- 3.0 SDI or more then it is an action alert flag.

Interpretation when an analyte is reported for multiple samples in a Round:

- a) Reported on 2 samples:
 - Two out of two pass - Acceptable performance
 - One out of two pass - Review for random error & take action if appropriate
 - Both failed - Unacceptable performance, Review for systematic error
- b) Reported on 3 samples:
 - All pass - Acceptable performance
 - Two out of three pass - Review for random error & take action if appropriate
 - One out of three pass - Unacceptable performance, Review for systematic error
 - All failed - Unacceptable performance, Review for systematic error

Dr. Puneet Kumar Nigam

Dr Puneet Kumar Nigam
PT coordinator & Technical Manager, MHL EQAS
Unit No. 409-416.
Commercial Building - 1A
Kohinoor Mall, Kirool Road, Kurla (W),
Mumbai - 400070

This is a computer generated report hence signature is not required



PC-1022