

Lab : 887

Cycle No : 230104

Lab Name : HEER CLINICAL LABORATORY

Sample No : 02

Report Date : 19/05/2023

Sample Date : 14/04/2023

**Biochemistry, Creatinine, mg/dl**

**Comparative Statistics**

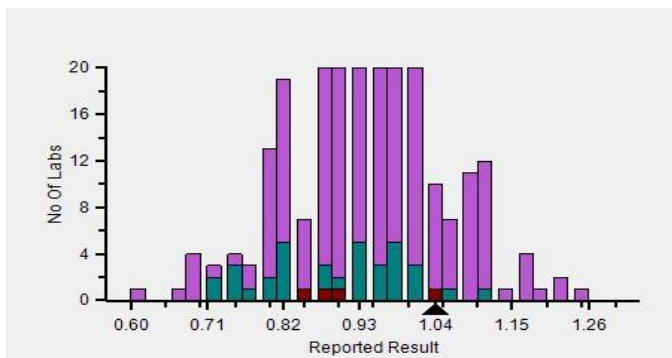
	N	Mean	SD	CV%	Excluded
All Methods	282	0.93	0.11	11.88	2
Enzymatic - (Your Method)	37	0.90	0.10	11.40	0
Mindray BS-240 - (Your Analyzer)	4	0.91	0.09	9.64	0

<b>Your Result</b>	1.04	<b>SDI / z-Score</b>	0.59
<b>Assigned Value</b>	0.98	<b>Average SDI</b>	0.16
<b>SDPA</b>	0.095	<b>Uncertainty of AV</b>	0.02
<b>Standard Unit Result Val</b>	1.04	<b>%DEV</b>	16.20

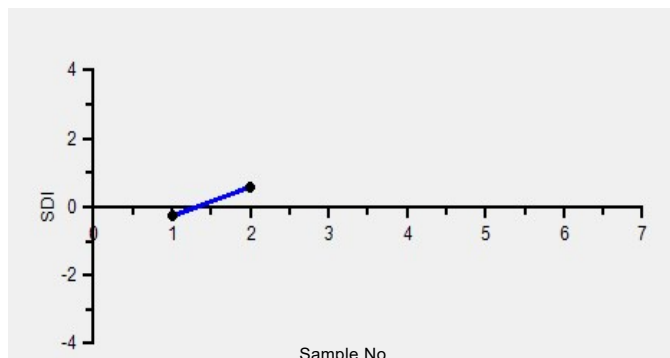
Note : # - Not evaluated / Bimodal distribution

X : SDI more than 4

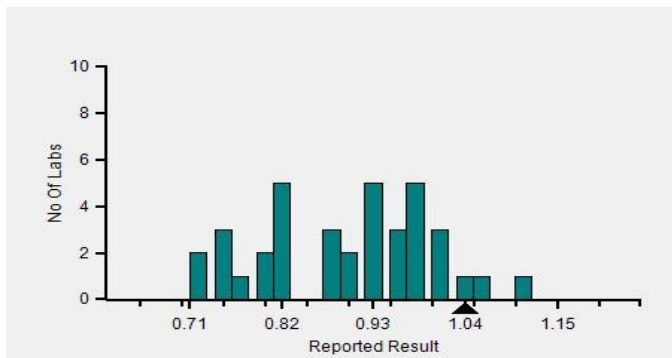
Frequency Histogram



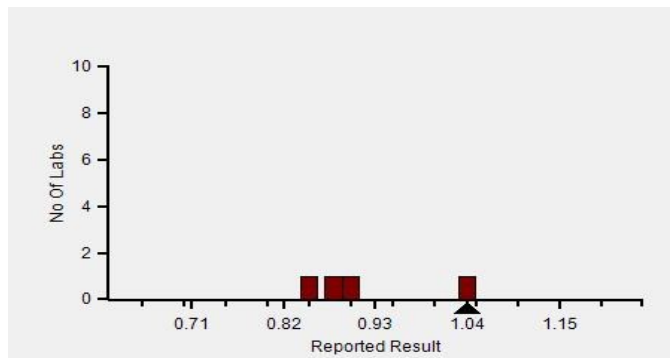
Z-Score Trend - Within Round



Frequency Histogram Your Method



Frequency Histogram Your Analyzer



Lab : 887

Cycle No : 230104

Lab Name : HEER CLINICAL LABORATORY

Sample No : 02

Report Date : 19/05/2023

Sample Date : 14/04/2023

Frequency Histogram Your Method



**Note :** SDI with \* marked are not considered for evaluation

**Comments :**

Biochemistry, Creatinine		N	Mean	SD	CV%	Excluded
	All Analyzer	282	0.93	0.11	11.88	2
<b>Your Analyzer :</b>	<b>Mindray BS-240</b>	<b>4</b>	<b>0.91</b>	<b>0.09</b>	<b>9.64</b>	-
	Erba EM 200	33	0.93	0.15	16.36	-
	Fuji Dri-Chem NX500/i	33	0.90	0.06	6.89	2
	Roche cobas c 311	31	0.94	0.06	6.82	-
	Roche cobas c 111	20	0.95	0.08	8.86	-
	Fuji Dri-Chem 4000i	16	0.90	0.09	9.85	-
	Roche cobas INTEGRA	14	0.86	0.08	9.38	-
	Fuji Dri-Chem NX600	14	0.87	0.06	7.23	-

Remarks: Interpretation of your reports

- a) If your SDI lies between +/- 2.0 SDI then your results are well within limits.
- b) If your SDI lies between +/-2.0 to 2.99 SDI then it is a warning alert flag.
- c) If your SDI is +/- 3.0 SDI or more then it is an action alert flag.

Interpretation when an analyte is reported for multiple samples in a Round:

a) Reported on 2 samples:

- Two out of two pass - Acceptable performance
- One out of two pass - Review for random error & take action if appropriate
- Both failed - Unacceptable performance, Review for systematic error

b) Reported on 3 samples:

- All pass - Acceptable performance
- Two out of three pass - Review for random error & take action if appropriate
- One out of three pass - Unacceptable performance, Review for systematic error
- All failed - Unacceptable performance, Review for systematic error



Lab : 887

Cycle No : 230104

Lab Name : HEER CLINICAL LABORATORY

Sample No : 02

Report Date : 19/05/2023

Sample Date : 14/04/2023

**Biochemistry, GGT, U/L**

**Comparative Statistics**

	N	Mean	SD	CV%	Excluded
All Methods	244	38.50	4.11	10.69	5
SZASZ IFCC standardized - (Your Method)	17	37.40	5.60	14.97	2
Mindray BS-240 - (Your Analyzer)	3	42.52	2.03	4.77	0

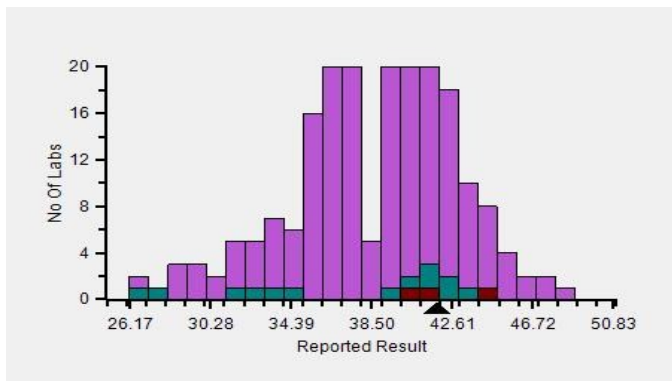
**Evaluation Based On - Equipment wise Peer Grouping**

Your Result	41.87	SDI / z-Score	0.40
Assigned Value	39.51	Average SDI	-0.16
SDPA	5.934	Uncertainty of AV	1.70
Standard Unit Result Val	41.87	%DEV	11.95

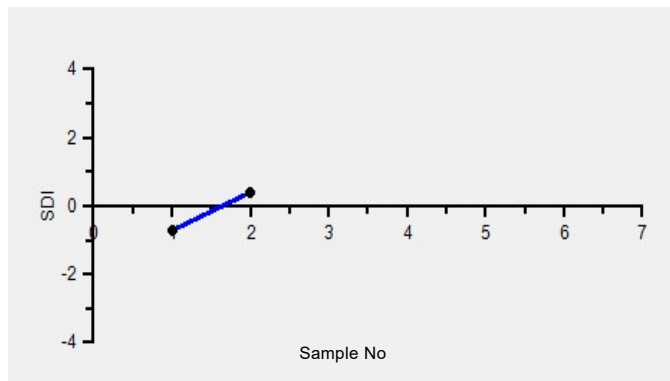
Note : # - Not evaluated / Bimodal distribution

X : SDI more than 4

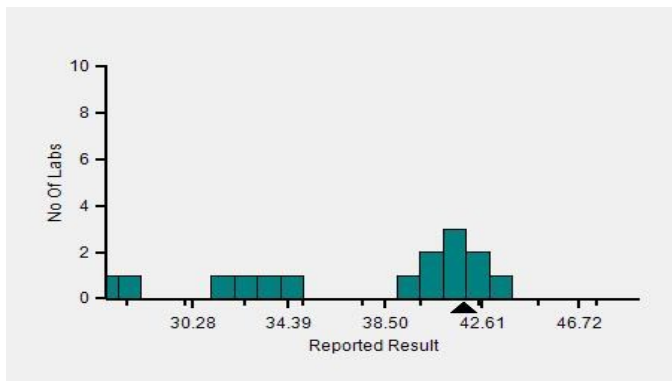
Frequency Histogram



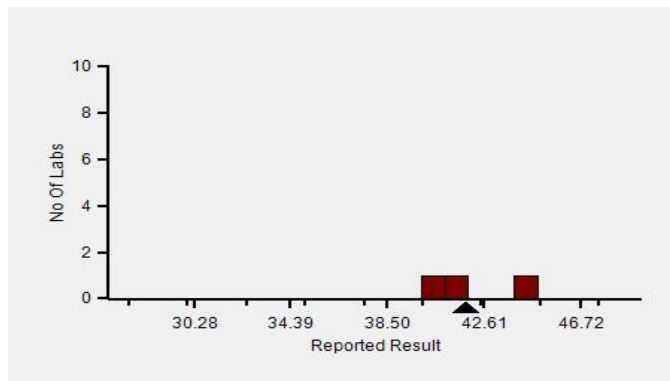
Z-Score Trend - Within Round



Frequency Histogram Your Method



Frequency Histogram Your Analyzer



Lab : 887

Cycle No : 230104

Lab Name : HEER CLINICAL LABORATORY

Sample No : 02

Report Date : 19/05/2023

Sample Date : 14/04/2023

Frequency Histogram Your Method



**Note :** SDI with \* marked are not considered for evaluation

**Comments :**

Biochemistry, GGT		N	Mean	SD	CV%	Excluded
	All Analyzer	244	38.50	4.11	10.69	5
<b>Your Analyzer :</b>	<b>Mindray BS-240</b>	<b>3</b>	<b>42.52</b>	<b>2.03</b>	<b>4.77</b>	-
	Fuji Dri-Chem NX500/i	31	39.37	3.09	7.85	1
	Roche cobas c 311	31	38.71	3.44	8.89	-
	Erba EM 200	23	40.69	4.59	11.27	1
	Roche cobas c 111	19	37.57	2.89	7.69	-
	Roche cobas INTEGRA	14	36.82	5.31	14.42	-
	Fuji Dri-Chem 4000i	13	39.23	2.46	6.26	-
	Fuji Dri-Chem NX600	13	34.42	3.37	9.79	1

Remarks: Interpretation of your reports

- a) If your SDI lies between +/- 2.0 SDI then your results are well within limits.
- b) If your SDI lies between +/-2.0 to 2.99 SDI then it is a warning alert flag.
- c) If your SDI is +/- 3.0 SDI or more then it is an action alert flag.

Interpretation when an analyte is reported for multiple samples in a Round:

- a) Reported on 2 samples:
  - Two out of two pass - Acceptable performance
  - One out of two pass - Review for random error & take action if appropriate
  - Both failed - Unacceptable performance, Review for systematic error
- b) Reported on 3 samples:
  - All pass - Acceptable performance
  - Two out of three pass - Review for random error & take action if appropriate
  - One out of three pass - Unacceptable performance, Review for systematic error
  - All failed - Unacceptable performance, Review for systematic error



Lab : 887

Cycle No : 230104

Lab Name : HEER CLINICAL LABORATORY

Sample No : 02

Report Date : 19/05/2023

Sample Date : 14/04/2023

**Biochemistry, Glucose, mg/dl**

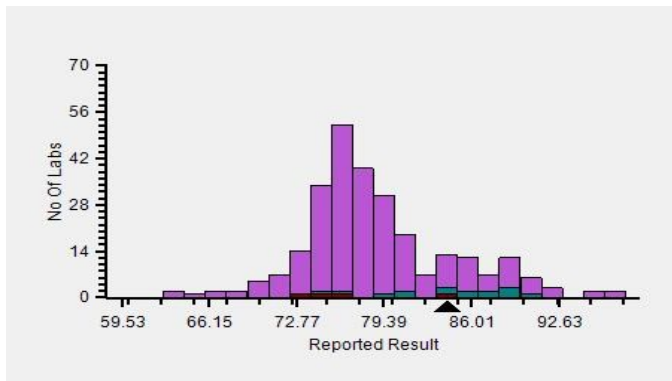
**Comparative Statistics**

	N	Mean	SD	CV%	Excluded
All Methods	280	79.39	6.62	8.34	3
GOD POD - (Your Method)	20	83.91	7.46	8.89	0
Mindray BS-240 - (Your Analyzer)	4	77.07	4.87	6.32	0

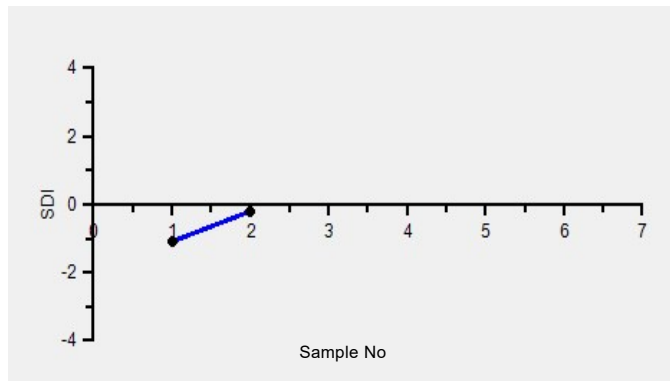
<b>Your Result</b>	84.16	<b>SDI / z-Score</b>	-0.20
<b>Assigned Value</b>	86.44	<b>Average SDI</b>	-0.65
<b>SDPA</b>	11.459	<b>Uncertainty of AV</b>	3.97
<b>Standard Unit Result Val</b>	84.16	<b>%DEV</b>	0.30

Note : # - Not evaluated / Bimodal distribution  
X : SDI more than 4

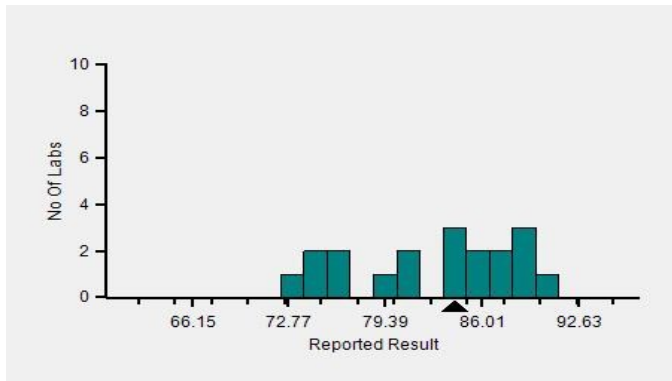
Frequency Histogram



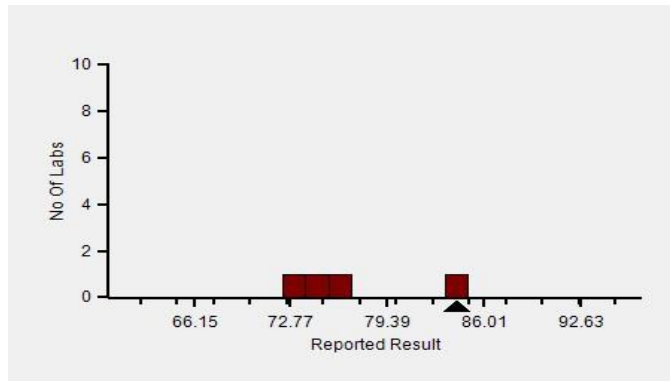
Z-Score Trend - Within Round



Frequency Histogram Your Method



Frequency Histogram Your Analyzer



Lab : 887

Cycle No : 230104

Lab Name : HEER CLINICAL LABORATORY

Sample No : 02

Report Date : 19/05/2023

Sample Date : 14/04/2023

Frequency Histogram Your Method



**Note :** SDI with \* marked are not considered for evaluation

**Comments :**

Biochemistry, Glucose		N	Mean	SD	CV%	Excluded
	All Analyzer	280	79.39	6.62	8.34	3
<b>Your Analyzer :</b>	<b>Mindray BS-240</b>	<b>4</b>	<b>77.07</b>	<b>4.87</b>	<b>6.32</b>	-
	Fuji Dri-Chem NX500/i	34	78.12	4.47	5.72	-
	Erba EM 200	32	88.23	6.87	7.79	-
	Roche cobas c 311	31	76.74	3.12	4.06	-
	Roche cobas c 111	20	78.27	4.91	6.28	-
	Fuji Dri-Chem 4000i	16	76.38	3.65	4.78	-
	Roche cobas INTEGRA	14	79.31	3.13	3.95	1
	Fuji Dri-Chem NX600	14	76.14	2.88	3.78	-

Remarks: Interpretation of your reports

- a) If your SDI lies between +/- 2.0 SDI then your results are well within limits.
- b) If your SDI lies between +/-2.0 to 2.99 SDI then it is a warning alert flag.
- c) If your SDI is +/- 3.0 SDI or more then it is an action alert flag.

Interpretation when an analyte is reported for multiple samples in a Round:

- a) Reported on 2 samples:
  - Two out of two pass - Acceptable performance
  - One out of two pass - Review for random error & take action if appropriate
  - Both failed - Unacceptable performance, Review for systematic error
- b) Reported on 3 samples:
  - All pass - Acceptable performance
  - Two out of three pass - Review for random error & take action if appropriate
  - One out of three pass - Unacceptable performance, Review for systematic error
  - All failed - Unacceptable performance, Review for systematic error



Lab : 887

Cycle No : 230104

Lab Name : HEER CLINICAL LABORATORY

Sample No : 02

Report Date : 19/05/2023

Sample Date : 14/04/2023

**Biochemistry, HDL, mg/dl**

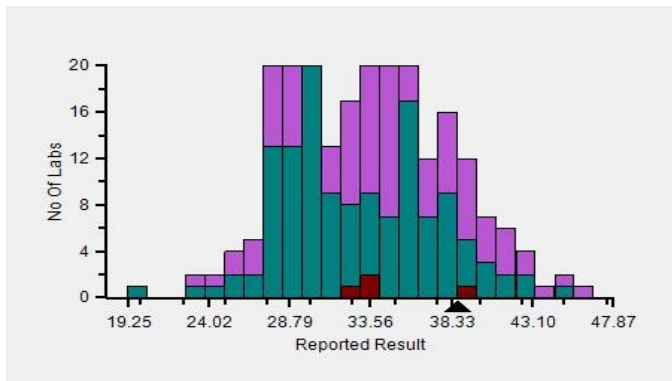
**Comparative Statistics**

	N	Mean	SD	CV%	Excluded
All Methods	268	33.56	4.77	14.22	3
Direct Enzymatic Colorimetric - (Your Method)	133	32.90	4.47	13.58	0
Mindray BS-240 - (Your Analyzer)	4	34.56	2.90	8.40	0

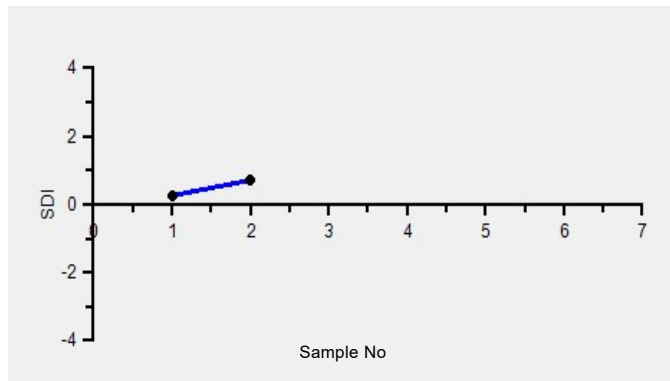
<b>Your Result</b>	38.73	<b>SDI / z-Score</b>	0.71
<b>Assigned Value</b>	34.88	<b>Average SDI</b>	0.49
<b>SDPA</b>	5.444	<b>Uncertainty of AV</b>	0.72
<b>Standard Unit Result Val</b>	38.73	<b>%DEV</b>	17.72

Note : # - Not evaluated / Bimodal distribution  
X : SDI more than 4

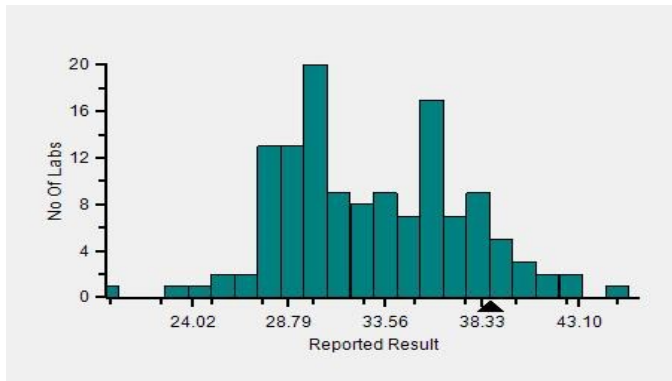
Frequency Histogram



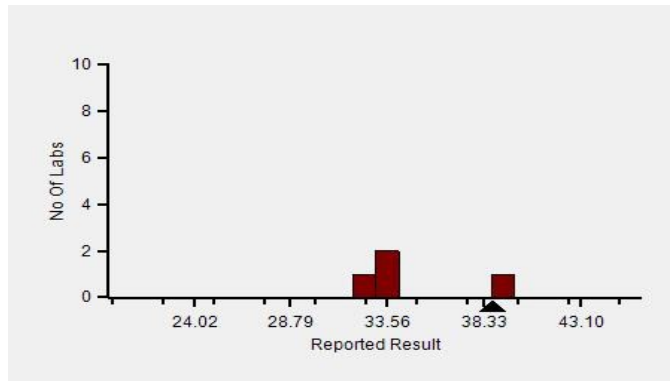
Z-Score Trend - Within Round



Frequency Histogram Your Method



Frequency Histogram Your Analyzer



Lab : 887

Cycle No : 230104

Lab Name : HEER CLINICAL LABORATORY

Sample No : 02

Report Date : 19/05/2023

Sample Date : 14/04/2023

Frequency Histogram Your Method



**Note :** SDI with \* marked are not considered for evaluation

**Comments :**

Biochemistry, HDL		N	Mean	SD	CV%	Excluded
	All Analyzer	268	33.56	4.77	14.22	3
<b>Your Analyzer :</b>	<b>Mindray BS-240</b>	<b>4</b>	<b>34.56</b>	<b>2.90</b>	<b>8.40</b>	-
	Fuji Dri-Chem NX500/i	34	35.55	3.12	8.77	-
	Erba EM 200	33	35.36	5.99	16.95	-
	Roche cobas c 311	30	29.72	1.89	6.37	-
	Roche cobas c 111	20	30.01	1.84	6.12	-
	Fuji Dri-Chem 4000i	13	35.69	2.10	5.88	-
	Roche cobas INTEGRA	13	28.98	1.86	6.41	-
	Fuji Dri-Chem NX600	13	34.15	1.77	5.19	-

Remarks: Interpretation of your reports

- a) If your SDI lies between +/- 2.0 SDI then your results are well within limits.
- b) If your SDI lies between +/-2.0 to 2.99 SDI then it is a warning alert flag.
- c) If your SDI is +/- 3.0 SDI or more then it is an action alert flag.

Interpretation when an analyte is reported for multiple samples in a Round:

- a) Reported on 2 samples:
  - Two out of two pass - Acceptable performance
  - One out of two pass - Review for random error & take action if appropriate
  - Both failed - Unacceptable performance, Review for systematic error
- b) Reported on 3 samples:
  - All pass - Acceptable performance
  - Two out of three pass - Review for random error & take action if appropriate
  - One out of three pass - Unacceptable performance, Review for systematic error
  - All failed - Unacceptable performance, Review for systematic error





Lab : 887

Cycle No : 230104

Lab Name : HEER CLINICAL LABORATORY

Sample No : 02

Report Date : 19/05/2023

Sample Date : 14/04/2023

**Biochemistry, LDH, U/L**

**Comparative Statistics**

	N	Mean	SD	CV%	Excluded
All Methods	148	144.40	51.21	35.46	9
IFCC - (Your Method)	17	139.95	32.24	23.04	2
Mindray BS-240 - (Your Analyzer)	3	150.27	18.56	12.35	0

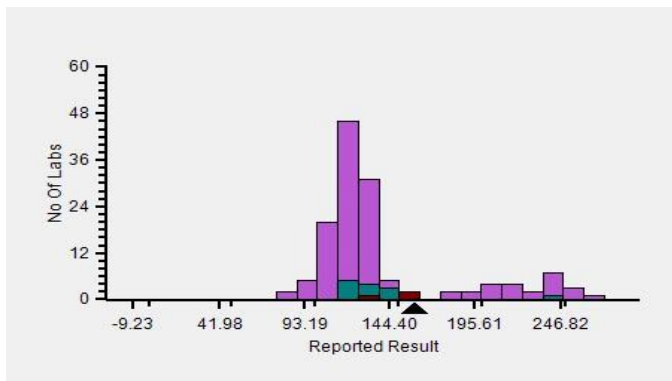
**Evaluation Based On - Equipment wise Peer Grouping**

Your Result	159.51	SDI / z-Score	1.23
Assigned Value	139.00	Average SDI	1.40
SDPA	16.676	Uncertainty of AV	7.88
Standard Unit Result Val	159.51	%DEV	13.98

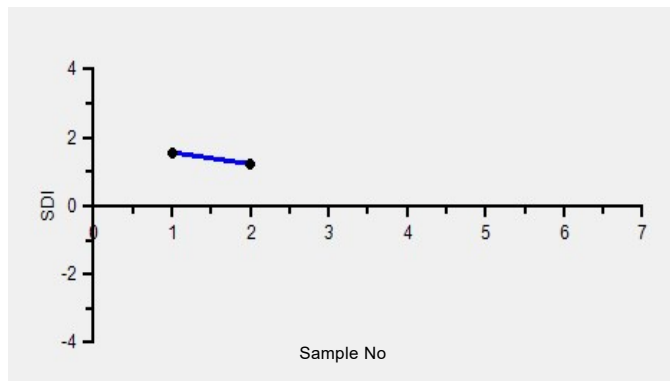
Note : # - Not evaluated / Bimodal distribution

X : SDI more than 4

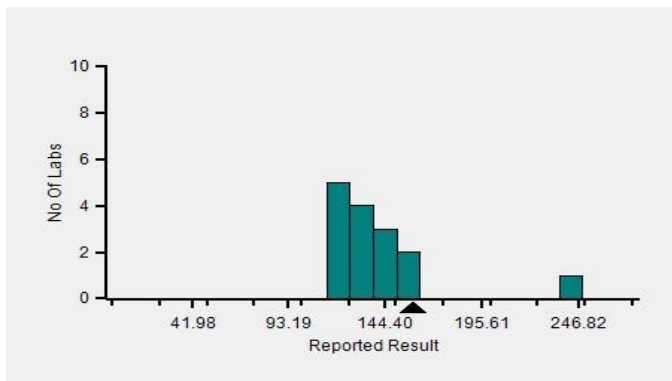
Frequency Histogram



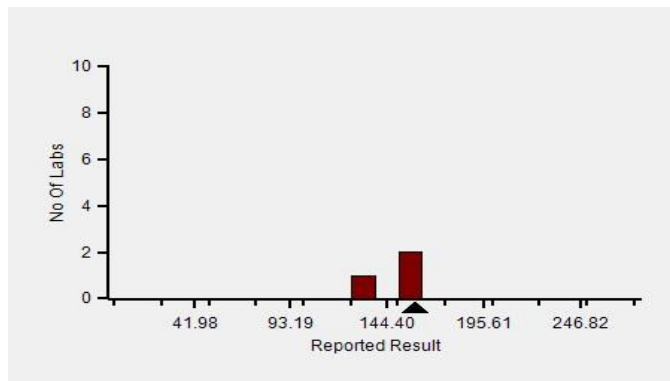
Z-Score Trend - Within Round



Frequency Histogram Your Method



Frequency Histogram Your Analyzer



Lab : 887

Cycle No : 230104

Lab Name : HEER CLINICAL LABORATORY

Sample No : 02

Report Date : 19/05/2023

Sample Date : 14/04/2023

Frequency Histogram Your Method



**Note :** SDI with \* marked are not considered for evaluation

**Comments :**

Biochemistry, LDH		N	Mean	SD	CV%	Excluded
	All Analyzer	148	144.40	51.21	35.46	9
<b>Your Analyzer :</b>	<b>Mindray BS-240</b>	<b>3</b>	<b>150.27</b>	<b>18.56</b>	<b>12.35</b>	-
	Fuji Dri-Chem NX500/i	23	114.87	13.04	11.35	-
	Roche cobas c 311	18	126.44	7.95	6.29	-
	Erba EM 200	15	227.67	55.98	24.59	1
	Roche cobas 6000	8	123.55	4.55	3.68	-
	Roche cobas c 111	8	127.16	3.78	2.97	1
	Fuji Dri-Chem 4000i	7	113.14	10.11	8.93	-
	Roche cobas 8000	6	118.33	7.69	6.49	-

Remarks: Interpretation of your reports

- a) If your SDI lies between +/- 2.0 SDI then your results are well within limits.
- b) If your SDI lies between +/-2.0 to 2.99 SDI then it is a warning alert flag.
- c) If your SDI is +/- 3.0 SDI or more then it is an action alert flag.

Interpretation when an analyte is reported for multiple samples in a Round:

- a) Reported on 2 samples:
  - Two out of two pass - Acceptable performance
  - One out of two pass - Review for random error & take action if appropriate
  - Both failed - Unacceptable performance, Review for systematic error
- b) Reported on 3 samples:
  - All pass - Acceptable performance
  - Two out of three pass - Review for random error & take action if appropriate
  - One out of three pass - Unacceptable performance, Review for systematic error
  - All failed - Unacceptable performance, Review for systematic error

*Dr Puneet Kumar Nigam*

**Dr Puneet Kumar Nigam**  
**PT coordinator & Technical Manager, MHL EQAS**  
Unit No. 409-416.  
Commercial Building - 1A  
Kohinoor Mall, Kirool Road, Kurla (W),  
Mumbai - 400070

This is a computer generated report hence signature is not required



PC-1022