

Lab : 887

Cycle No : 230104

Lab Name : HEER CLINICAL LABORATORY

Sample No : 02

Report Date : 19/05/2023

Sample Date : 14/04/2023

Biochemistry, LDL, mg/dl

Comparative Statistics

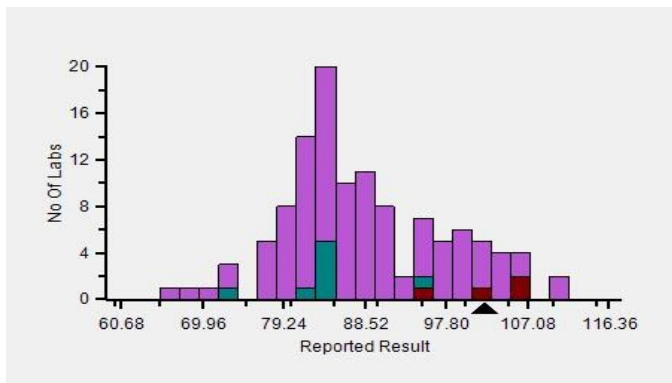
	N	Mean	SD	CV%	Excluded
All Methods	123	88.52	9.28	10.48	6
Direct Measurement - (Your Method)	10	86.46	8.41	9.73	0
Mindray BS-240 - (Your Analyzer)	4	102.10	5.13	5.02	0

Evaluation Based On - Equipment wise Peer Grouping

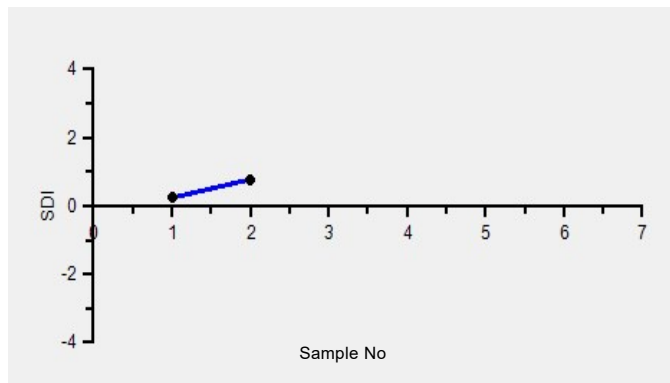
Your Result	102.15	SDI / z-Score	0.78
Assigned Value	92.83	Average SDI	0.51
SDPA	11.950	Uncertainty of AV	2.73
Standard Unit Result Val	102.15	%DEV	18.15

Note : # - Not evaluated / Bimodal distribution
X : SDI more than 4

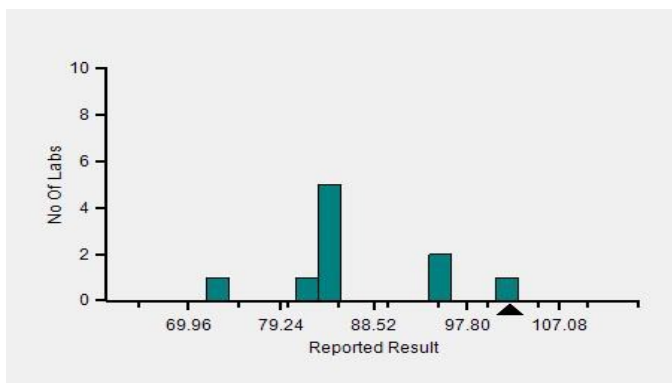
Frequency Histogram



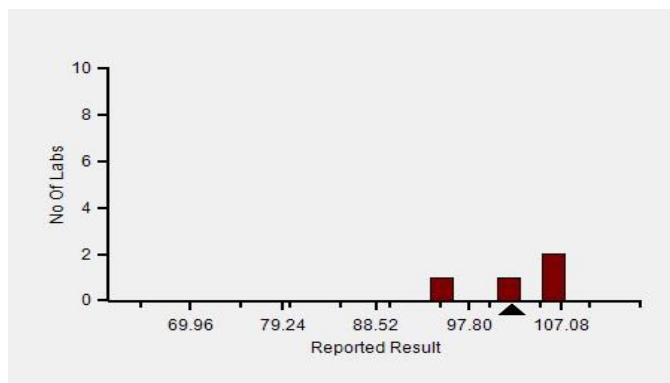
Z-Score Trend - Within Round



Frequency Histogram Your Method



Frequency Histogram Your Analyzer



Lab : 887

Cycle No : 230104

Lab Name : HEER CLINICAL LABORATORY

Sample No : 02

Report Date : 19/05/2023

Sample Date : 14/04/2023

Frequency Histogram Your Method



Note : SDI with * marked are not considered for evaluation

Comments :

Biochemistry, LDL		N	Mean	SD	CV%	Excluded
	All Analyzer	123	88.52	9.28	10.48	6
Your Analyzer :	Mindray BS-240	4	102.10	5.13	5.02	-
	Roche cobas c 311	21	86.32	8.60	9.96	1
	Erba EM 200	15	90.18	6.56	7.28	1
	Roche cobas 6000	10	80.30	3.65	4.54	-
	Roche cobas INTEGRA	9	87.55	4.17	4.77	-
	Horiba ABX Pentra C200	6	81.48	7.15	8.78	-
	Roche cobas 8000	5	84.35	2.97	3.52	-
	Roche cobas c 111	5	90.45	10.59	11.71	2

Remarks: Interpretation of your reports

- If your SDI lies between +/- 2.0 SDI then your results are well within limits.
- If your SDI lies between +/-2.0 to 2.99 SDI then it is a warning alert flag.
- If your SDI is +/- 3.0 SDI or more then it is an action alert flag.

Interpretation when an analyte is reported for multiple samples in a Round:

- Reported on 2 samples:
 - Two out of two pass - Acceptable performance
 - One out of two pass - Review for random error & take action if appropriate
 - Both failed - Unacceptable performance, Review for systematic error
- Reported on 3 samples:
 - All pass - Acceptable performance
 - Two out of three pass - Review for random error & take action if appropriate
 - One out of three pass - Unacceptable performance, Review for systematic error
 - All failed - Unacceptable performance, Review for systematic error



Lab : 887

Cycle No : 230104

Lab Name : HEER CLINICAL LABORATORY

Sample No : 02

Report Date : 19/05/2023

Sample Date : 14/04/2023

Biochemistry, Lipase, U/L

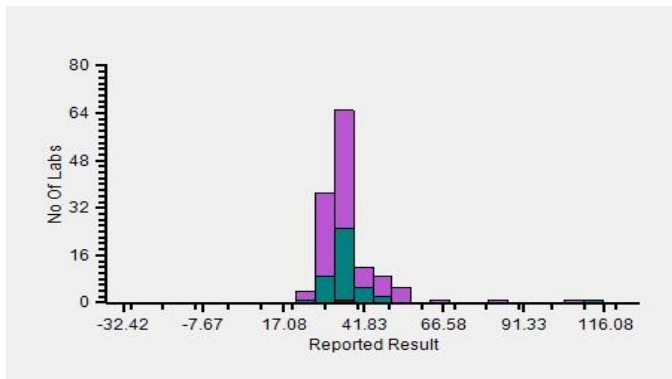
Comparative Statistics

	N	Mean	SD	CV%	Excluded
All Methods	145	41.83	24.75	59.16	3
Enzymatic, colorimetric - (Your Method)	45	39.84	23.07	57.91	1
Mindray BS-240 - (Your Analyzer)	2	34.06	--	--	1

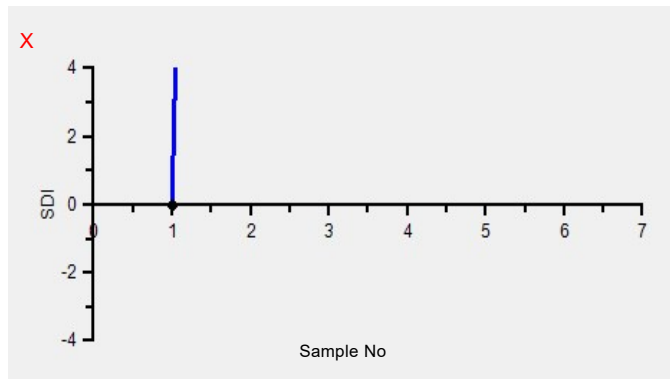
Your Result	440.88	SDI / z-Score	*
Assigned Value	31.83	Average SDI	0.00
SDPA	4.512	Uncertainty of AV	2.82
Standard Unit Result Val	440.88	%DEV	1,006.63

Note : # - Not evaluated / Bimodal distribution
X : SDI more than 4

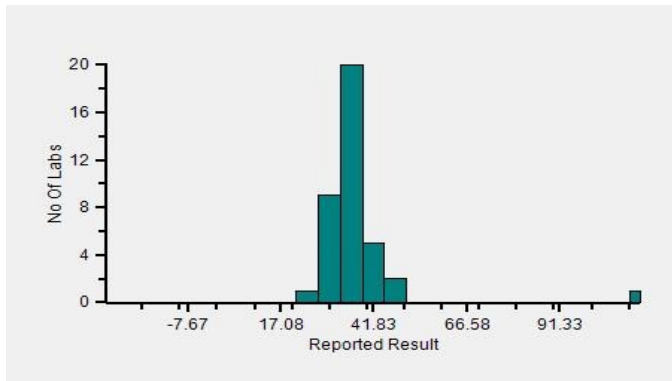
Frequency Histogram



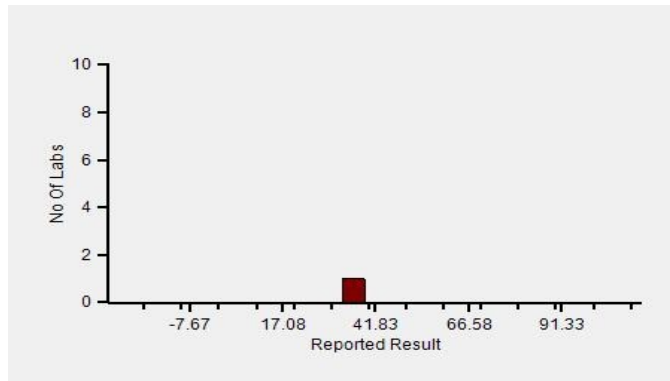
Z-Score Trend - Within Round



Frequency Histogram Your Method



Frequency Histogram Your Analyzer



Lab : 887

Cycle No : 230104

Lab Name : HEER CLINICAL LABORATORY

Sample No : 02

Report Date : 19/05/2023

Sample Date : 14/04/2023

Frequency Histogram Your Method



Note : SDI with * marked are not considered for evaluation

Comments :

Biochemistry, Lipase		N	Mean	SD	CV%	Excluded
	All Analyzer	145	41.83	24.75	59.16	3
Your Analyzer :	Mindray BS-240	2	34.06	-	-	1
	Fuji Dri-Chem NX500/i	23	33.30	3.18	9.56	-
	Erba EM 200	15	44.84	7.54	16.81	1
	Roche cobas c 311	15	34.29	1.56	4.56	-
	Fuji Dri-Chem NX600	12	31.75	3.77	11.87	-
	Fuji Dri-Chem 4000i	11	33.09	3.11	9.41	-
	Roche cobas INTEGRA	8	33.65	2.18	6.46	-
	Roche cobas 6000	7	34.43	2.85	8.26	-

Remarks: Interpretation of your reports

- a) If your SDI lies between +/- 2.0 SDI then your results are well within limits.
- b) If your SDI lies between +/-2.0 to 2.99 SDI then it is a warning alert flag.
- c) If your SDI is +/- 3.0 SDI or more then it is an action alert flag.

Interpretation when an analyte is reported for multiple samples in a Round:

a) Reported on 2 samples:

- Two out of two pass - Acceptable performance
- One out of two pass - Review for random error & take action if appropriate
- Both failed - Unacceptable performance, Review for systematic error

b) Reported on 3 samples:

- All pass - Acceptable performance
- Two out of three pass - Review for random error & take action if appropriate
- One out of three pass - Unacceptable performance, Review for systematic error
- All failed - Unacceptable performance, Review for systematic error



Lab : 887

Cycle No : 230104

Lab Name : HEER CLINICAL LABORATORY

Sample No : 02

Report Date : 19/05/2023

Sample Date : 14/04/2023

Biochemistry, Magnesium, mg/dl

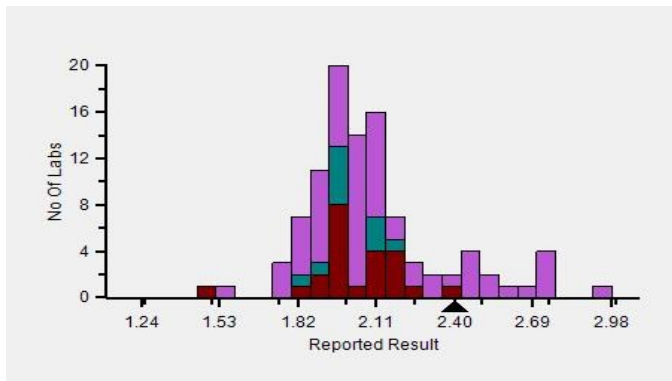
Comparative Statistics

	N	Mean	SD	CV%	Excluded
All Methods	112	2.11	0.29	13.72	4
Peroxidase oxidation of Diarylimidazole Leuco Dye - (Your Method)	35	2.03	0.16	7.62	1
Fuji Dri-Chem NX500/i - (Your Analyzer)	24	2.04	0.18	8.58	1

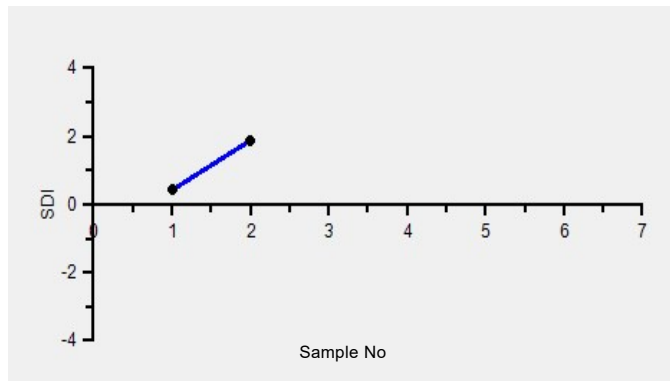
Your Result	2.40	SDI / z-Score	1.88
Assigned Value	2.04	Average SDI	1.15
SDPA	0.190	Uncertainty of AV	0.02
Standard Unit Result Val	2.40	%DEV	17.65

Note : # - Not evaluated / Bimodal distribution
X : SDI more than 4

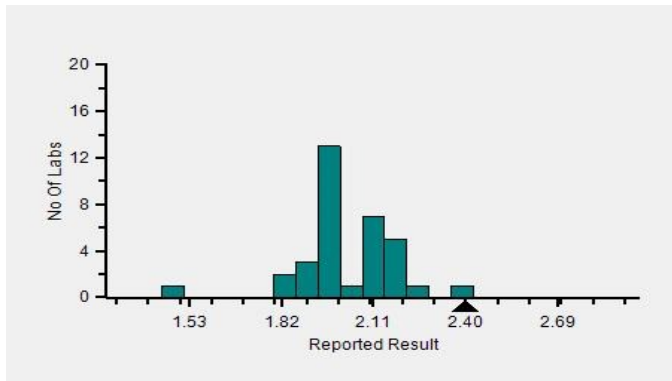
Frequency Histogram



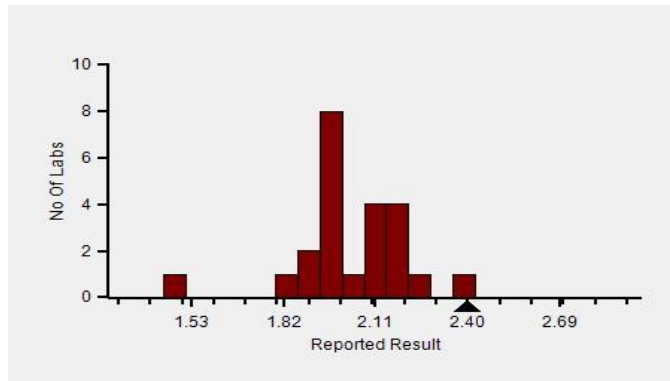
Z-Score Trend - Within Round



Frequency Histogram Your Method



Frequency Histogram Your Analyzer



Lab : 887

Cycle No : 230104

Lab Name : HEER CLINICAL LABORATORY

Sample No : 02

Report Date : 19/05/2023

Sample Date : 14/04/2023

Frequency Histogram Your Method



Note : SDI with * marked are not considered for evaluation

Comments :

Biochemistry, Magnesium		N	Mean	SD	CV%	Excluded
	All Analyzer	112	2.11	0.29	13.72	4
Your Analyzer :	Fuji Dri-Chem NX500/i	24	2.04	0.18	8.58	1
	Erba EM 200	11	2.30	0.46	19.97	-
	Fuji Dri-Chem 4000i	8	2.00	0.11	5.35	-
	Roche cobas 6000	8	2.00	0.08	4.15	-
	Roche cobas 8000	6	2.03	0.04	2.07	-
	Roche cobas c 311	5	1.95	0.13	6.68	-
	Roche cobas c 111	4	2.13	0.22	10.29	-
	Mispa CXL Pro Plus	4	2.13	0.16	7.29	-

Remarks: Interpretation of your reports

- a) If your SDI lies between +/- 2.0 SDI then your results are well within limits.
- b) If your SDI lies between +/-2.0 to 2.99 SDI then it is a warning alert flag.
- c) If your SDI is +/- 3.0 SDI or more then it is an action alert flag.

Interpretation when an analyte is reported for multiple samples in a Round:

a) Reported on 2 samples:

- Two out of two pass - Acceptable performance
- One out of two pass - Review for random error & take action if appropriate
- Both failed - Unacceptable performance, Review for systematic error

b) Reported on 3 samples:

- All pass - Acceptable performance
- Two out of three pass - Review for random error & take action if appropriate
- One out of three pass - Unacceptable performance, Review for systematic error
- All failed - Unacceptable performance, Review for systematic error



Lab : 887

Cycle No : 230104

Lab Name : HEER CLINICAL LABORATORY

Sample No : 02

Report Date : 19/05/2023

Sample Date : 14/04/2023

Biochemistry, Phosphorous Inorganic, mg/dl

Comparative Statistics

	N	Mean	SD	CV%	Excluded
All Methods	223	4.44	0.43	9.64	3
Phosphomolybdate method - (Your Method)	119	4.37	0.46	10.50	0
Mindray BS-240 - (Your Analyzer)	3	4.36	0.34	7.68	0

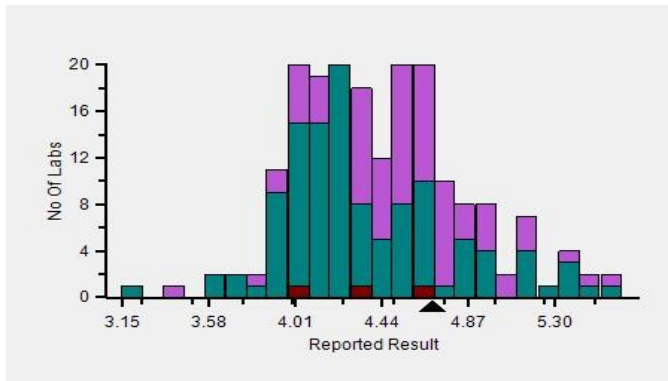
Evaluation Based On - Equipment wise Peer Grouping

Your Result	4.69	SDI / z-Score	-0.04
Assigned Value	4.72	Average SDI	-0.35
SDPA	0.696	Uncertainty of AV	0.20
Standard Unit Result Val	4.69	%DEV	7.32

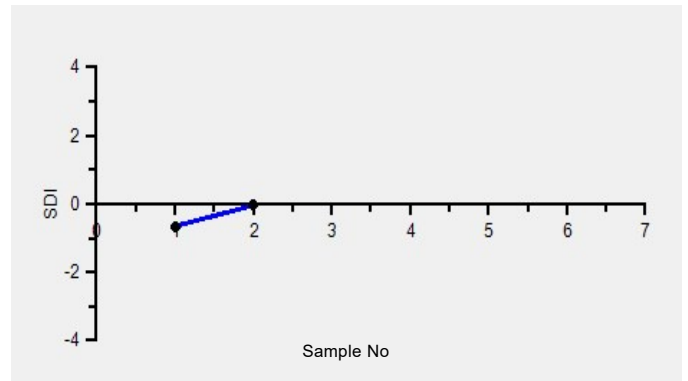
Note : # - Not evaluated / Bimodal distribution

X : SDI more than 4

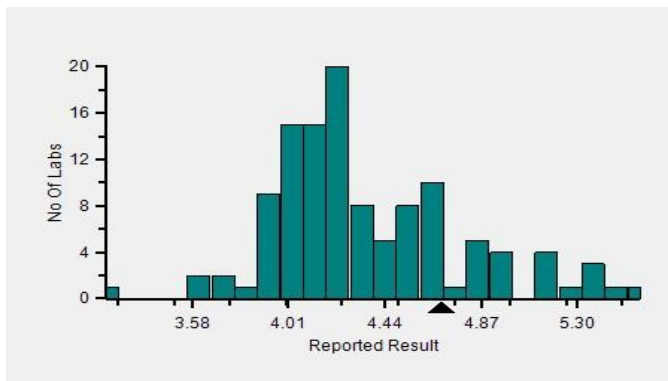
Frequency Histogram



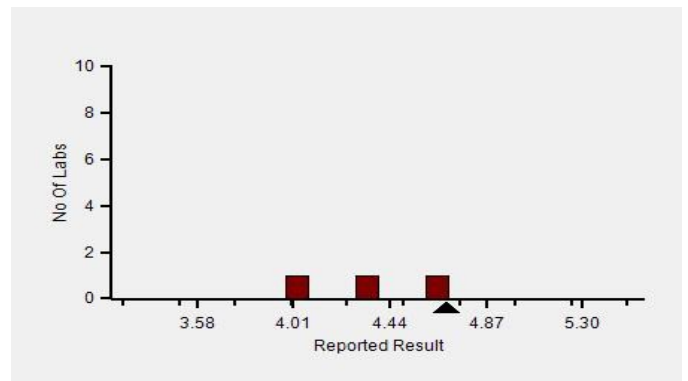
Z-Score Trend - Within Round



Frequency Histogram Your Method



Frequency Histogram Your Analyzer



Lab : 887

Cycle No : 230104

Lab Name : HEER CLINICAL LABORATORY

Sample No : 02

Report Date : 19/05/2023

Sample Date : 14/04/2023

Frequency Histogram Your Method



Note : SDI with * marked are not considered for evaluation

Comments :

Biochemistry, Phosphorous Inorganic		N	Mean	SD	CV%	Excluded
	All Analyzer	223	4.44	0.43	9.64	3
Your Analyzer :	Mindray BS-240	3	4.36	0.34	7.68	-
	Fuji Dri-Chem NX500/i	33	4.55	0.24	5.37	-
	Roche cobas c 311	28	4.12	0.16	3.90	-
	Erba EM 200	21	4.76	0.34	7.14	-
	Roche cobas c 111	13	4.26	0.23	5.46	-
	Fuji Dri-Chem NX600	13	4.60	0.20	4.35	-
	Fuji Dri-Chem 4000i	12	4.47	0.17	3.74	-
	Roche cobas 6000	10	4.00	0.23	5.65	-

Remarks: Interpretation of your reports

- a) If your SDI lies between +/- 2.0 SDI then your results are well within limits.
- b) If your SDI lies between +/-2.0 to 2.99 SDI then it is a warning alert flag.
- c) If your SDI is +/- 3.0 SDI or more then it is an action alert flag.

Interpretation when an analyte is reported for multiple samples in a Round:

- a) Reported on 2 samples:
 - Two out of two pass - Acceptable performance
 - One out of two pass - Review for random error & take action if appropriate
 - Both failed - Unacceptable performance, Review for systematic error
- b) Reported on 3 samples:
 - All pass - Acceptable performance
 - Two out of three pass - Review for random error & take action if appropriate
 - One out of three pass - Unacceptable performance, Review for systematic error
 - All failed - Unacceptable performance, Review for systematic error



Lab : 887

Cycle No : 230104

Lab Name : HEER CLINICAL LABORATORY

Sample No : 02

Report Date : 19/05/2023

Sample Date : 14/04/2023

Biochemistry, Potassium, mmol/L

Comparative Statistics

	N	Mean	SD	CV%	Excluded
All Methods	258	4.57	0.23	5.03	5
ISE indirect - (Your Method)	65	4.59	0.19	4.07	0
Sensa Core ST100 - (Your Analyzer)	1	--	--	--	0

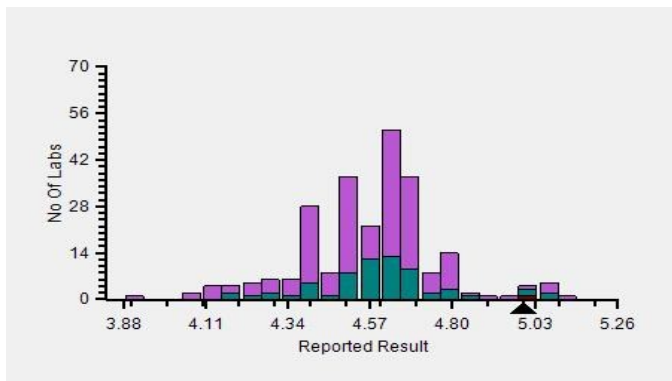
Evaluation Based On - Method wise Peer Grouping

Your Result	5.00	SDI / z-Score	1.53
Assigned Value	4.57	Average SDI	0.69
SDPA	0.280	Uncertainty of AV	0.02
Standard Unit Result Val	5.00	%DEV	8.93

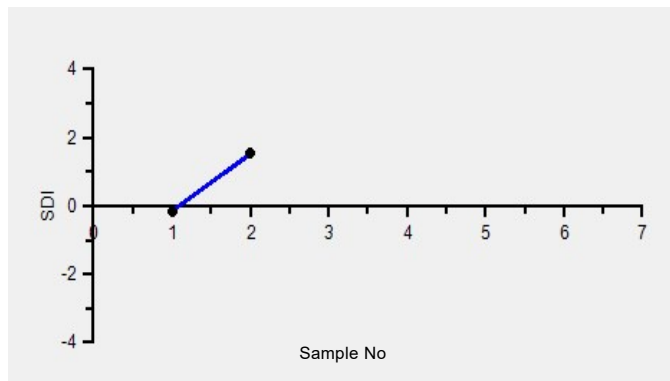
Note : # - Not evaluated / Bimodal distribution

X : SDI more than 4

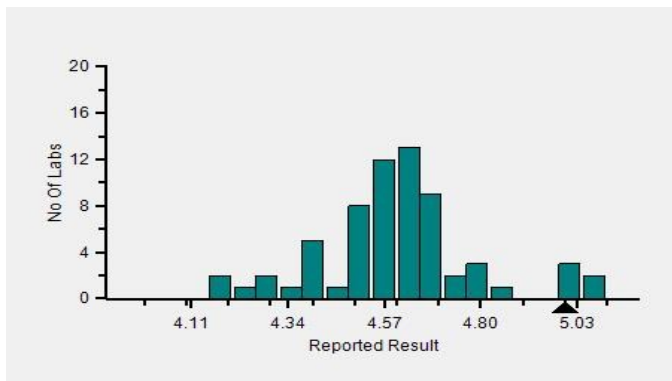
Frequency Histogram



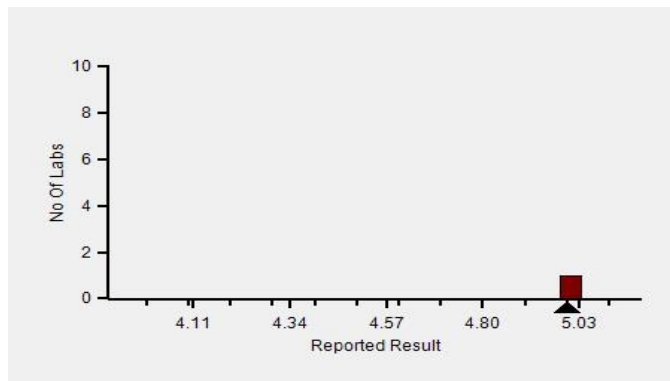
Z-Score Trend - Within Round



Frequency Histogram Your Method



Frequency Histogram Your Analyzer



Lab : 887

Cycle No : 230104

Lab Name : HEER CLINICAL LABORATORY

Sample No : 02

Report Date : 19/05/2023

Sample Date : 14/04/2023

Frequency Histogram Your Method



Note : SDI with * marked are not considered for evaluation

Comments :

Biochemistry, Potassium		N	Mean	SD	CV%	Excluded
	All Analyzer	258	4.57	0.23	5.03	5
Your Analyzer :	Sensa Core ST100	1	-	-	-	-
	Fuji Dri-Chem NX500/i	37	4.57	0.19	4.10	-
	Roche cobas c 311	22	4.67	0.20	4.24	-
	Roche AVL 9180	21	4.70	0.29	6.17	-
	Fuji Dri-Chem 4000i	19	4.53	0.10	2.21	-
	Fuji Dri-Chem NX600	17	4.59	0.18	3.81	1
	EasyLyte	14	4.52	0.20	4.51	-
	Roche cobas 6000	8	4.59	0.15	3.22	-

Remarks: Interpretation of your reports

- a) If your SDI lies between +/- 2.0 SDI then your results are well within limits.
- b) If your SDI lies between +/-2.0 to 2.99 SDI then it is a warning alert flag.
- c) If your SDI is +/- 3.0 SDI or more then it is an action alert flag.

Interpretation when an analyte is reported for multiple samples in a Round:

- a) Reported on 2 samples:
 - Two out of two pass - Acceptable performance
 - One out of two pass - Review for random error & take action if appropriate
 - Both failed - Unacceptable performance, Review for systematic error
- b) Reported on 3 samples:
 - All pass - Acceptable performance
 - Two out of three pass - Review for random error & take action if appropriate
 - One out of three pass - Unacceptable performance, Review for systematic error
 - All failed - Unacceptable performance, Review for systematic error

Dr. Puneet Kumar Nigam

Dr Puneet Kumar Nigam
PT coordinator & Technical Manager, MHL EQAS
Unit No. 409-416.
Commercial Building - 1A
Kohinoor Mall, Kirool Road, Kurla (W),
Mumbai - 400070

This is a computer generated report hence signature is not required



PC-1022