

Lab : 887

Cycle No : 230104

Lab Name : HEER CLINICAL LABORATORY

Sample No : 02

Report Date : 19/05/2023

Sample Date : 14/04/2023

Biochemistry, Sodium, mmol/L

Comparative Statistics

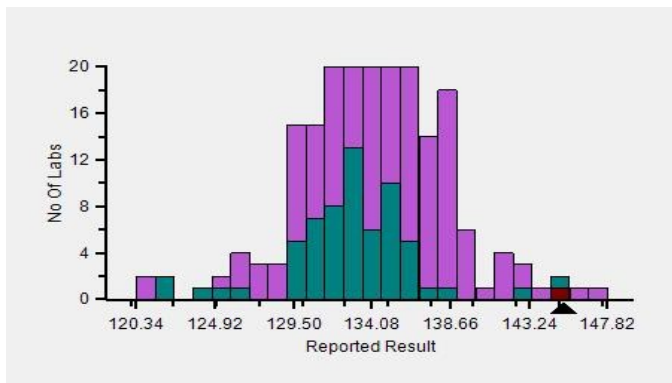
	N	Mean	SD	CV%	Excluded
All Methods	257	134.08	4.58	3.41	4
ISE indirect - (Your Method)	64	133.02	4.09	3.08	0
Sensa Core ST100 - (Your Analyzer)	1	--	--	--	0

Evaluation Based On - Method wise Peer Grouping

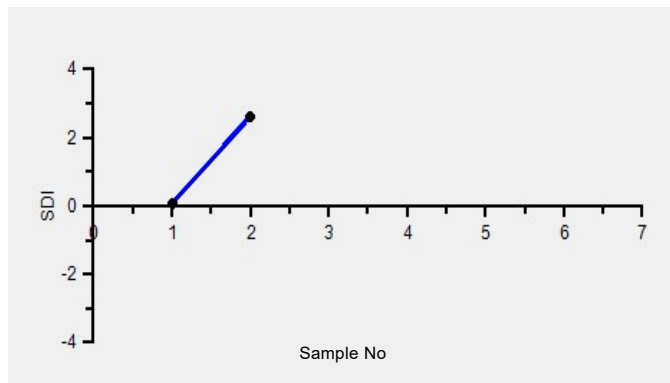
Your Result	145.30	SDI / z-Score	2.63
Assigned Value	133.19	Average SDI	1.35
SDPA	4.600	Uncertainty of AV	0.35
Standard Unit Result Val	145.30	%DEV	9.24

Note : # - Not evaluated / Bimodal distribution
X : SDI more than 4

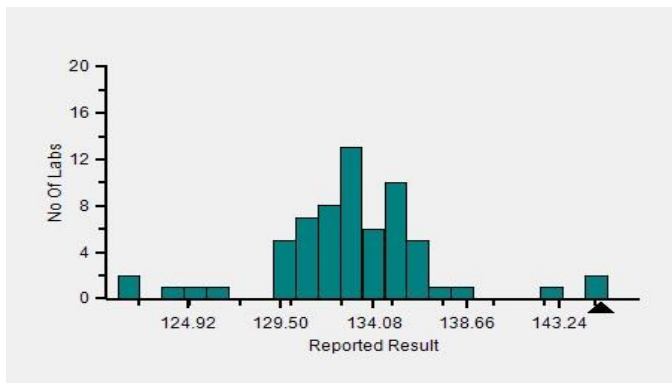
Frequency Histogram



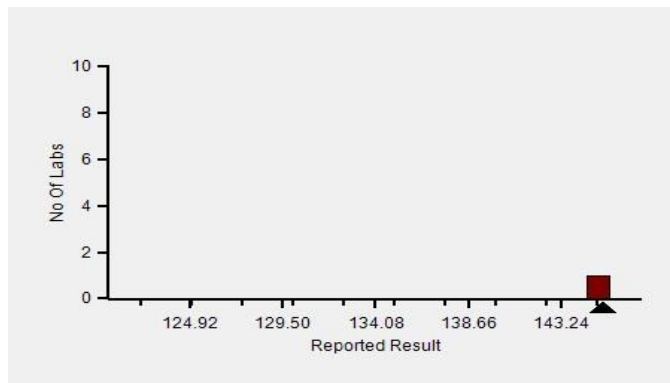
Z-Score Trend - Within Round



Frequency Histogram Your Method



Frequency Histogram Your Analyzer



Lab : 887

Cycle No : 230104

Lab Name : HEER CLINICAL LABORATORY

Sample No : 02

Report Date : 19/05/2023

Sample Date : 14/04/2023

Frequency Histogram Your Method



Note : SDI with * marked are not considered for evaluation

Comments :

Biochemistry, Sodium		N	Mean	SD	CV%	Excluded
	All Analyzer	257	134.08	4.58	3.41	4
Your Analyzer :	Sensa Core ST100	1	-	-	-	-
	Fuji Dri-Chem NX500/i	38	135.11	3.85	2.85	-
	Roche cobas c 311	22	133.51	5.04	3.78	-
	Roche AVL 9180	21	133.96	8.67	6.47	-
	Fuji Dri-Chem 4000i	18	133.94	2.98	2.23	-
	Fuji Dri-Chem NX600	17	135.46	3.62	2.67	-
	EasyLyte	14	134.64	3.47	2.58	1
	Roche cobas 6000	8	132.75	4.62	3.48	-

Remarks: Interpretation of your reports

- a) If your SDI lies between +/- 2.0 SDI then your results are well within limits.
- b) If your SDI lies between +/-2.0 to 2.99 SDI then it is a warning alert flag.
- c) If your SDI is +/- 3.0 SDI or more then it is an action alert flag.

Interpretation when an analyte is reported for multiple samples in a Round:

- a) Reported on 2 samples:
 - Two out of two pass - Acceptable performance
 - One out of two pass - Review for random error & take action if appropriate
 - Both failed - Unacceptable performance, Review for systematic error
- b) Reported on 3 samples:
 - All pass - Acceptable performance
 - Two out of three pass - Review for random error & take action if appropriate
 - One out of three pass - Unacceptable performance, Review for systematic error
 - All failed - Unacceptable performance, Review for systematic error



Lab : 887

Cycle No : 230104

Lab Name : HEER CLINICAL LABORATORY

Sample No : 02

Report Date : 19/05/2023

Sample Date : 14/04/2023

Biochemistry, Total Protein, g/dL

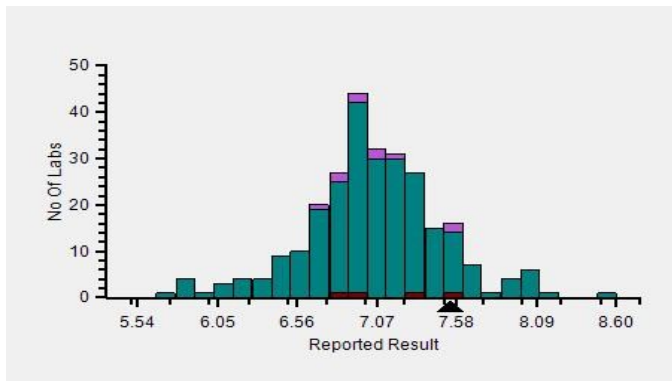
Comparative Statistics

	N	Mean	SD	CV%	Excluded
All Methods	277	7.07	0.51	7.16	3
Biuret - (Your Method)	267	7.07	0.51	7.26	3
Mindray BS-240 - (Your Analyzer)	4	7.15	0.36	5.08	0

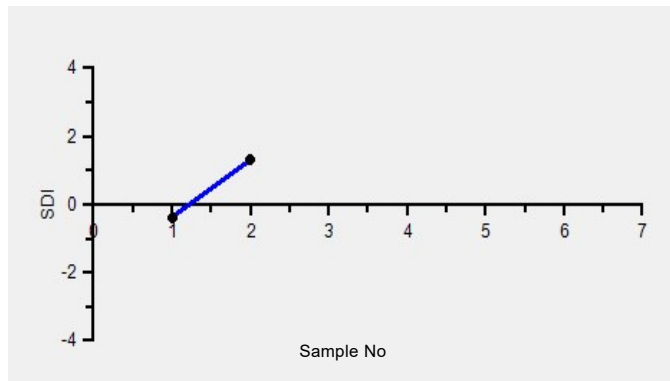
Your Result	7.54	SDI / z-Score	1.31
Assigned Value	6.98	Average SDI	0.47
SDPA	0.430	Uncertainty of AV	0.10
Standard Unit Result Val	7.54	%DEV	6.65

Note : # - Not evaluated / Bimodal distribution
X : SDI more than 4

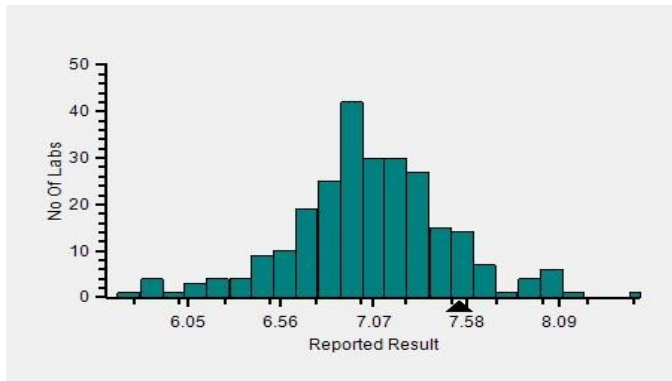
Frequency Histogram



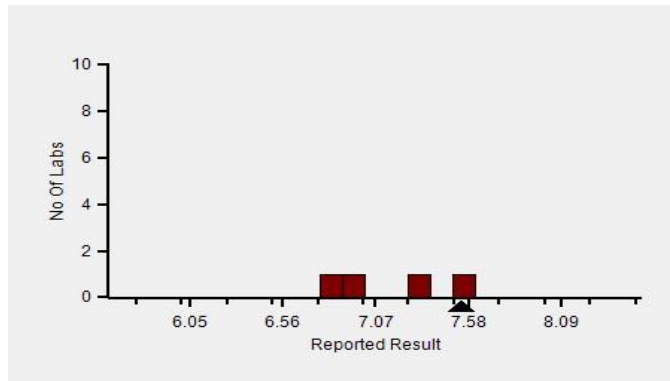
Z-Score Trend - Within Round



Frequency Histogram Your Method



Frequency Histogram Your Analyzer



Lab : 887

Cycle No : 230104

Lab Name : HEER CLINICAL LABORATORY

Sample No : 02

Report Date : 19/05/2023

Sample Date : 14/04/2023

Frequency Histogram Your Method



Note : SDI with * marked are not considered for evaluation

Comments :

Biochemistry, Total Protein		N	Mean	SD	CV%	Excluded
	All Analyzer	277	7.07	0.51	7.16	3
Your Analyzer :	Mindray BS-240	4	7.15	0.36	5.08	-
	Fuji Dri-Chem NX500/i	35	7.33	0.45	6.15	-
	Erba EM 200	34	7.27	0.73	10.07	-
	Roche cobas c 311	31	6.98	0.22	3.12	-
	Roche cobas c 111	19	6.85	0.23	3.40	-
	Fuji Dri-Chem 4000i	14	7.25	0.42	5.79	1
	Roche cobas INTEGRA	14	6.72	0.31	4.67	-
	Fuji Dri-Chem NX600	14	7.14	0.15	2.03	-

Remarks: Interpretation of your reports

- a) If your SDI lies between +/- 2.0 SDI then your results are well within limits.
- b) If your SDI lies between +/-2.0 to 2.99 SDI then it is a warning alert flag.
- c) If your SDI is +/- 3.0 SDI or more then it is an action alert flag.

Interpretation when an analyte is reported for multiple samples in a Round:

- a) Reported on 2 samples:
 - Two out of two pass - Acceptable performance
 - One out of two pass - Review for random error & take action if appropriate
 - Both failed - Unacceptable performance, Review for systematic error
- b) Reported on 3 samples:
 - All pass - Acceptable performance
 - Two out of three pass - Review for random error & take action if appropriate
 - One out of three pass - Unacceptable performance, Review for systematic error
 - All failed - Unacceptable performance, Review for systematic error



Lab : 887

Cycle No : 230104

Lab Name : HEER CLINICAL LABORATORY

Sample No : 02

Report Date : 19/05/2023

Sample Date : 14/04/2023

Biochemistry, Triglycerides, mg/dl

Comparative Statistics

	N	Mean	SD	CV%	Excluded
All Methods	274	139.35	12.39	8.89	4
GPO-PAP - (Your Method)	35	133.16	12.17	9.14	1
Mindray BS-240 - (Your Analyzer)	4	137.64	6.21	4.51	0

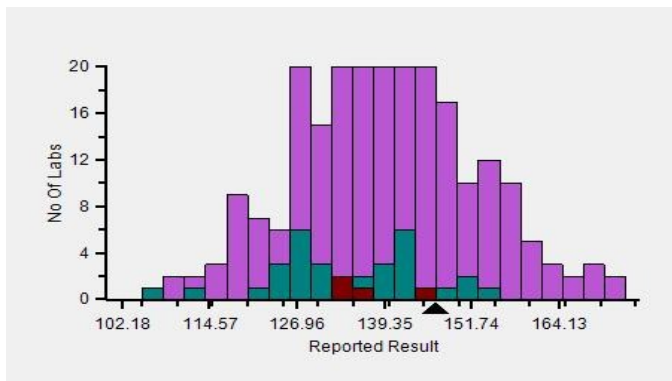
Evaluation Based On - Equipment wise Peer Grouping

Your Result	146.64	SDI / z-Score	0.74
Assigned Value	136.39	Average SDI	0.29
SDPA	13.900	Uncertainty of AV	2.37
Standard Unit Result Val	146.64	%DEV	10.13

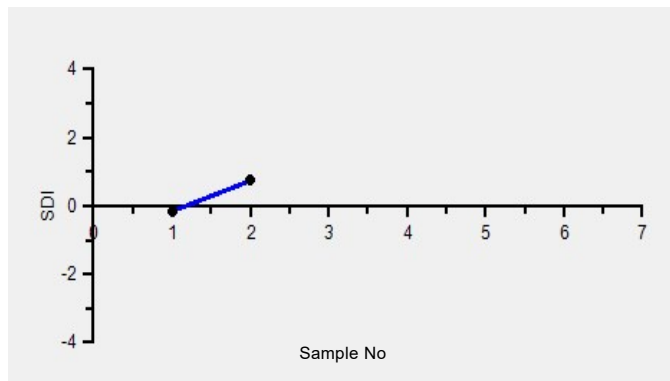
Note : # - Not evaluated / Bimodal distribution

X : SDI more than 4

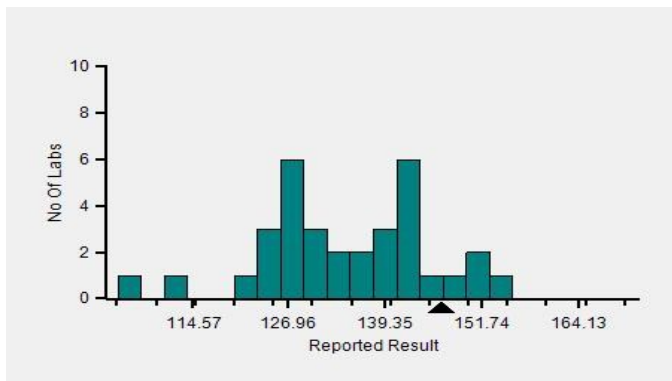
Frequency Histogram



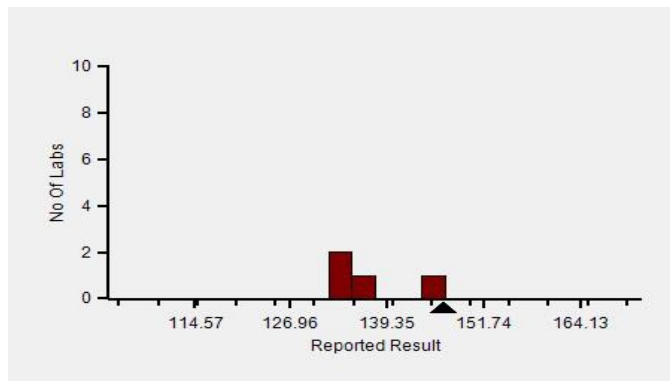
Z-Score Trend - Within Round



Frequency Histogram Your Method



Frequency Histogram Your Analyzer



Lab : 887

Cycle No : 230104

Lab Name : HEER CLINICAL LABORATORY

Sample No : 02

Report Date : 19/05/2023

Sample Date : 14/04/2023

Frequency Histogram Your Method



Note : SDI with * marked are not considered for evaluation

Comments :

Biochemistry, Triglycerides

		N	Mean	SD	CV%	Excluded
	All Analyzer	274	139.35	12.39	8.89	4
Your Analyzer :	Mindray BS-240	4	137.64	6.21	4.51	-
	Fuji Dri-Chem NX500/i	33	147.62	10.63	7.20	-
	Erba EM 200	32	125.08	7.99	6.39	1
	Roche cobas c 311	31	142.59	5.58	3.92	-
	Roche cobas c 111	21	147.96	8.45	5.71	-
	Roche cobas INTEGRA	14	140.93	6.16	4.37	-
	Fuji Dri-Chem 4000i	13	146.08	10.35	7.08	-
	Fuji Dri-Chem NX600	13	138.31	4.85	3.51	-

Remarks: Interpretation of your reports

- If your SDI lies between +/- 2.0 SDI then your results are well within limits.
- If your SDI lies between +/-2.0 to 2.99 SDI then it is a warning alert flag.
- If your SDI is +/- 3.0 SDI or more then it is an action alert flag.

Interpretation when an analyte is reported for multiple samples in a Round:

a) Reported on 2 samples:

- Two out of two pass - Acceptable performance
- One out of two pass - Review for random error & take action if appropriate
- Both failed - Unacceptable performance, Review for systematic error

b) Reported on 3 samples:

- All pass - Acceptable performance
- Two out of three pass - Review for random error & take action if appropriate
- One out of three pass - Unacceptable performance, Review for systematic error
- All failed - Unacceptable performance, Review for systematic error



Lab : 887

Cycle No : 230104

Lab Name : HEER CLINICAL LABORATORY

Sample No : 02

Report Date : 19/05/2023

Sample Date : 14/04/2023

Biochemistry, Urea, mg/dl

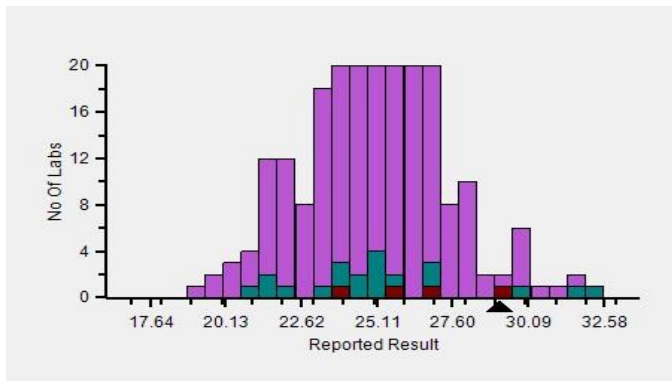
Comparative Statistics

	N	Mean	SD	CV%	Excluded
All Methods	281	25.11	2.49	9.90	9
Urease GLDH, UV - (Your Method)	23	25.39	2.99	11.78	0
Mindray BS-240 - (Your Analyzer)	4	26.43	2.24	8.47	0

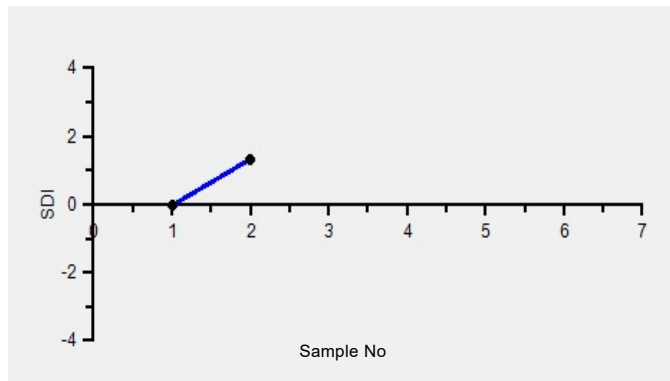
Your Result	29.15	SDI / z-Score	1.33
Assigned Value	25.15	Average SDI	0.65
SDPA	3.001	Uncertainty of AV	0.63
Standard Unit Result Val	29.15	%DEV	14.81

Note : # - Not evaluated / Bimodal distribution
X : SDI more than 4

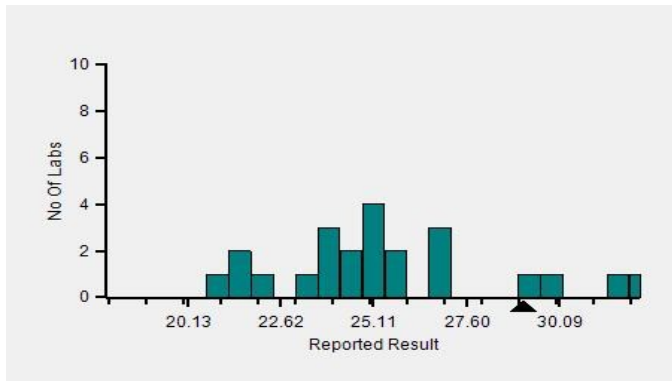
Frequency Histogram



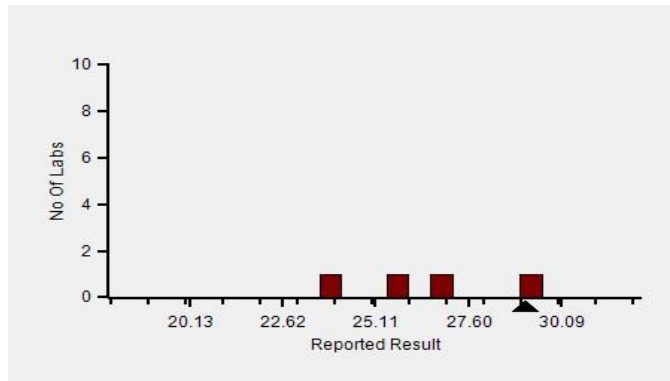
Z-Score Trend - Within Round



Frequency Histogram Your Method



Frequency Histogram Your Analyzer



Lab : 887

Cycle No : 230104

Lab Name : HEER CLINICAL LABORATORY

Sample No : 02

Report Date : 19/05/2023

Sample Date : 14/04/2023

Frequency Histogram Your Method



Note : SDI with * marked are not considered for evaluation

Comments :

Biochemistry, Urea		N	Mean	SD	CV%	Excluded
	All Analyzer	281	25.11	2.49	9.90	9
Your Analyzer :	Mindray BS-240	4	26.43	2.24	8.47	-
	Erba EM 200	34	25.77	3.60	13.96	-
	Fuji Dri-Chem NX500/i	33	25.48	2.00	7.86	1
	Roche cobas c 311	31	24.99	1.26	5.03	-
	Roche cobas c 111	21	23.96	1.96	8.16	-
	Fuji Dri-Chem 4000i	15	25.34	1.41	5.56	2
	Roche cobas INTEGRA	14	23.25	1.10	4.74	-
	Fuji Dri-Chem NX600	14	25.65	0.91	3.54	2

Remarks: Interpretation of your reports

- a) If your SDI lies between +/- 2.0 SDI then your results are well within limits.
- b) If your SDI lies between +/-2.0 to 2.99 SDI then it is a warning alert flag.
- c) If your SDI is +/- 3.0 SDI or more then it is an action alert flag.

Interpretation when an analyte is reported for multiple samples in a Round:

- a) Reported on 2 samples:
 - Two out of two pass - Acceptable performance
 - One out of two pass - Review for random error & take action if appropriate
 - Both failed - Unacceptable performance, Review for systematic error
- b) Reported on 3 samples:
 - All pass - Acceptable performance
 - Two out of three pass - Review for random error & take action if appropriate
 - One out of three pass - Unacceptable performance, Review for systematic error
 - All failed - Unacceptable performance, Review for systematic error



Lab : 887

Cycle No : 230104

Lab Name : HEER CLINICAL LABORATORY

Sample No : 02

Report Date : 19/05/2023

Sample Date : 14/04/2023

Biochemistry, Uric Acid, mg/dl

Comparative Statistics

	N	Mean	SD	CV%	Excluded
All Methods	278	4.82	0.52	10.72	5
Uricase - POD - (Your Method)	31	4.95	0.60	12.20	1
Mindray BS-240 - (Your Analyzer)	4	4.58	0.11	2.43	0

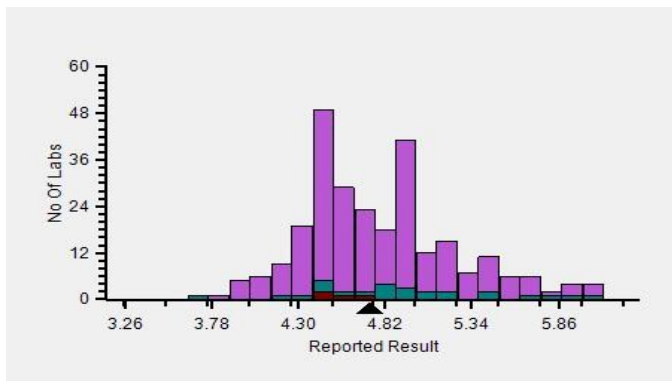
Evaluation Based On - Equipment wise Peer Grouping

Your Result	4.73	SDI / z-Score	-0.79
Assigned Value	5.37	Average SDI	-1.09
SDPA	0.808	Uncertainty of AV	0.18
Standard Unit Result Val	4.73	%DEV	-4.43

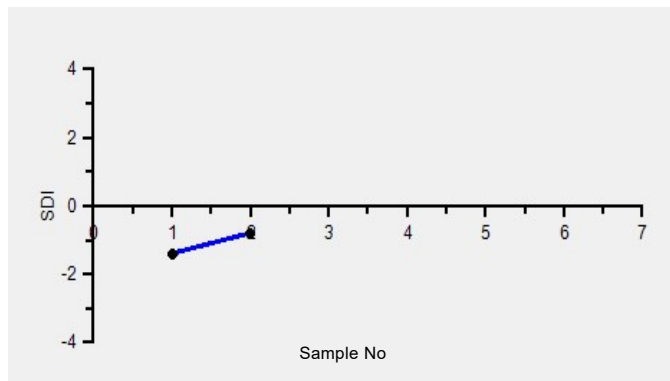
Note : # - Not evaluated / Bimodal distribution

X : SDI more than 4

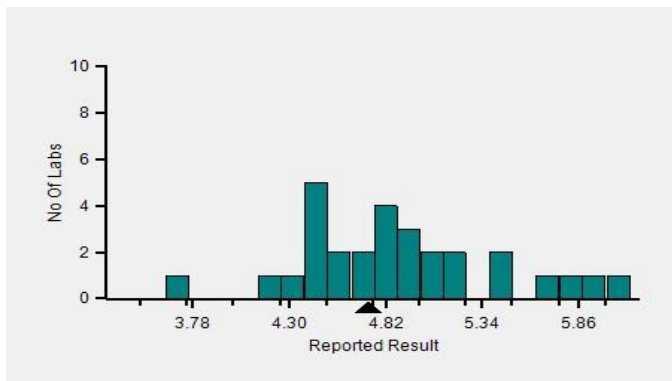
Frequency Histogram



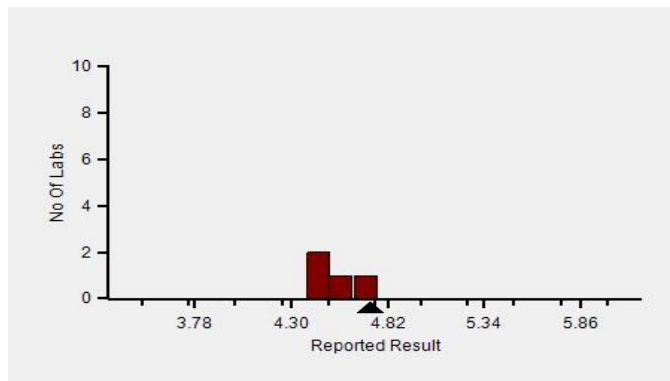
Z-Score Trend - Within Round



Frequency Histogram Your Method



Frequency Histogram Your Analyzer



Lab : 887

Cycle No : 230104

Lab Name : HEER CLINICAL LABORATORY

Sample No : 02

Report Date : 19/05/2023

Sample Date : 14/04/2023

Frequency Histogram Your Method



Note : SDI with * marked are not considered for evaluation

Comments :

Biochemistry, Uric Acid		N	Mean	SD	CV%	Excluded
	All Analyzer	278	4.82	0.52	10.72	5
Your Analyzer :	Mindray BS-240	4	4.58	0.11	2.43	-
	Fuji Dri-Chem NX500/i	33	4.89	0.26	5.36	1
	Erba EM 200	32	5.32	0.42	7.95	1
	Roche cobas c 311	30	4.50	0.22	4.93	-
	Roche cobas c 111	21	4.62	0.41	8.77	-
	Fuji Dri-Chem 4000i	17	4.86	0.29	5.97	-
	Roche cobas INTEGRA	14	4.59	0.21	4.60	-
	Fuji Dri-Chem NX600	14	4.87	0.16	3.26	-

Remarks: Interpretation of your reports

- a) If your SDI lies between +/- 2.0 SDI then your results are well within limits.
- b) If your SDI lies between +/-2.0 to 2.99 SDI then it is a warning alert flag.
- c) If your SDI is +/- 3.0 SDI or more then it is an action alert flag.

Interpretation when an analyte is reported for multiple samples in a Round:

a) Reported on 2 samples:

- Two out of two pass - Acceptable performance
- One out of two pass - Review for random error & take action if appropriate
- Both failed - Unacceptable performance, Review for systematic error

b) Reported on 3 samples:

- All pass - Acceptable performance
- Two out of three pass - Review for random error & take action if appropriate
- One out of three pass - Unacceptable performance, Review for systematic error
- All failed - Unacceptable performance, Review for systematic error

Dr. Puneet Kumar Nigam

Dr Puneet Kumar Nigam
PT coordinator & Technical Manager, MHL EQAS

Unit No. 409-416.
Commercial Building - 1A
Kohinoor Mall, Kirool Road, Kurla (W),
Mumbai - 400070

This is a computer generated report hence signature is not required



PC-1022