

**CALIBRATION CERTIFICATE**

ADVIA 560, bearing serial number **S021356** at Lifewell Diagnostic Pvt Ltd  
Chandigarh 160019 have been duly calibrated on 17 July 2023.

**BACKGROUND COUNTS:**

Parameter	Count
WBC (0 – 0.20 )	0.01
PLT ( 0 – 15 )	1
HGB ( 0-1.0 )	0
RBC ( 0- 0.05 )	0

**CALIBRATION ACCEPTANCE**

Parameter	Status	Value
WBC	Passed	0.94
RBC	Passed	0.99
HGB	Passed	1.03
MCV	Passed	0.98
PLT	Passed	1.19

The instrument is working satisfactorily, subsequent to Calibrations of the above parameters, and the **Next Calibration is due on 16 January 2024.**

**Siemens Healthcare pvt. Limited**

**Vineet Chauhan**  
**Customer Service Manager**





Measure



AS



Database



Print



Menu

## Accept factors

			CV%
WBC	0.94	(0.95)	1.04
RBC	0.99	(0.97)	0.22
PLT	1.19	(1.00)	2.59
HGB	1.03	(1.01)	0.00
MCV	0.98	(0.96)	0.32



Discard

Accept

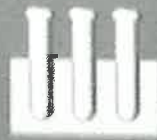
AS state  
None

65% 60% 89% 74%

Calibration measurement 100% en-US  
10 5



Measure



AS



Database



Print



Menu

Sample ID:

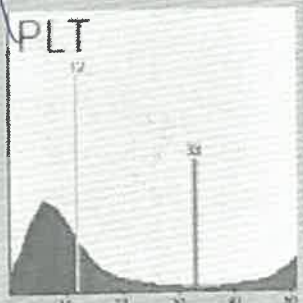
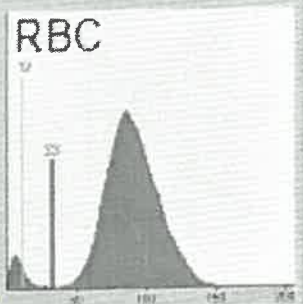
Calib 1/3 Patient Unique No.:

Date:

7/17/2023 10:52 AM Mode

CalibControl

WBC:	9.06	$10^3/\mu\text{L}$
NEU:	8.70	$10^3/\mu\text{L}$
LYM:	0.19	$10^3/\mu\text{L}$
MON:	0.03	$10^3/\mu\text{L}$
EO:	0.14	$10^3/\mu\text{L}$
BAS:	0.00	$10^3/\mu\text{L}$
NEU%:	96.0	%
LYM%:	2.1	%
MON%:	0.3	%
EO%:	1.6	%
BAS%:	0.0	%
RBC:	4.45	$10^6/\mu\text{L}$
HGB:	13.2	g/dL
HCT:	40.1	%
MCV:	90.2	fL
MCH:	29.7	pg
MCHC:	32.9	g/dL
RDWsd:	51.3	fL
RDWcv:	16.4	%
PLT:	207	$10^3/\mu\text{L}$
PCT:	0.18	%
MPV:	8.5	fL
PDWsd:	20.8	fL
PDWcv:	39.3	%
PLCR:	28.17	%
PLCC:	58	$10^3/\mu\text{L}$



Warning flags

Interpretive flags

Morphological flags

TW

Abort

Accept

Resample

AS state  
None

66 %

61 %

89 %

73 %



Calibration measurement

100 %

en-US

10:53



Measure



AS



Database



Print



Menu

Sample ID:

Calib 2/3 Patient Unique No.:

Date:

7/17/2023 10:53 AM Mode:

CalibControl

WBC:	9.25	$10^3/\mu\text{L}$
NEU:	8.37	$10^3/\mu\text{L}$
LYM:	0.64	$10^3/\mu\text{L}$
MON:	0.03	$10^3/\mu\text{L}$
EO:	0.21	$10^3/\mu\text{L}$
BAS:	0.00	$10^3/\mu\text{L}$
NEU%:	90.5	%
LYM%:	6.9	%
MON%:	0.3	%
EO%:	2.3	%
BAS%:	0.0	%
RBC:	4.46	$10^6/\mu\text{L}$
HGB:	13.2	g/dL
HCT:	40.4	%
MCV:	90.7	fL
MCH:	29.6	pg
MCHC:	32.6	g/dL
RDWsd:	50.4	fL
RDWcv:	16.2	%
PLT:	198	$10^3/\mu\text{L}$
PCT:	0.18	%
MPV:	9.1	fL
PDWsd:	22.9	fL
PDWcv:	39.2	%
PLCR:	31.85	%
PLCC:	63	$10^3/\mu\text{L}$

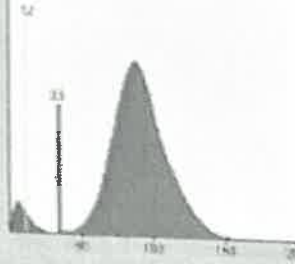
DIFF



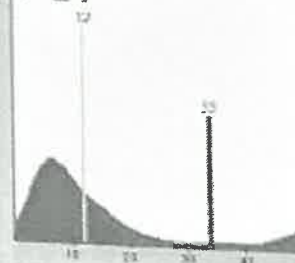
BAS



RBC



PLT



Warning flags

Interpretive flags

Morphological flags

Abort

Accept

Resample

AS state

66

61

89

73

None

%

%

%

%



Calibration measurement

100 %

en-US

10:54



Measure



AS



Database



Print



Menu

Sample ID:

Calib 3/3 Patient Unique No.:

Date:

7/17/2023 10:55 AM Mode:

CalibControl

WBC:	9.17	$10^3/\mu\text{L}$
NEU:	8.66	$10^3/\mu\text{L}$
LYM:	0.29	$10^3/\mu\text{L}$
MON:	0.05	$10^3/\mu\text{L}$
EO:	0.17	$10^3/\mu\text{L}$
BAS:	0.00	$10^3/\mu\text{L}$
NEU%:	94.4	%
LYM%:	3.2	%
MON%:	0.5	%
EO%:	1.9	%
BAS%:	0.0	%
RBC:	4.47	$10^6/\mu\text{L}$
HGB:	13.2	g/dL
HCT:	40.6	%
MCV:	90.7	fL
MCH:	29.5	pg
MCHC:	32.5	g/dL
RDWsd:	51.0	fL
RDWcv:	16.3	%
PLT:	198	$10^3/\mu\text{L}$
PCT:	0.17	%
MPV:	8.6	fL
PDWsd:	21.6	fL
PDWcv:	38.9	%
PLCR:	28.91	%
PLCC:	57	$10^3/\mu\text{L}$

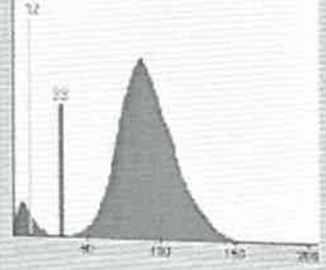
DIFF



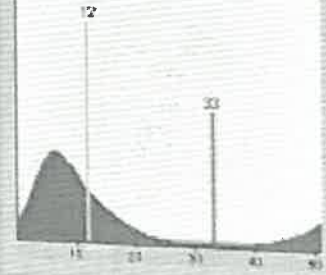
BAS



RBC



PLT



Warning flags

Interpretive flags

Morphological flags

TW

Abort

Accept

Resart

AS state

65

60

89

74

None

%

%

%

%



Calibration measurement

100

%

en-US

10 50