

HORIBA

Medical

HORIBA India Private Limited

246, Okhla Industrial Estate Phase-III,

New Delhi 110020, India

Tel : +91 (11) 4646 5000 / 4669 5001

Fax : +91 (11) 4646 5020

http : //www.horiba.com

CIN : U73100DL2006PTC153232

CALIBRATION CERTIFICATE

This is to certify that the Hematology Analyzer **YUMIZEN H550** bearing serial number: **211YADH04058** installed at **REDCLIFFE LABS, BATHINDA, PUNJAB** has calibrated on **23rd DECEMBER 2022**.

Calibrator : **ABX MINOCAL**

Lot No. : **CX477**

Expiry Date: **05/01/2023**

The reports of Blank Cycle, Repeatability and Calibration Values were all found in acceptable range.

Next calibration cycle is due on **22nd DECEMBER 2023**.



Shrish Dixit

(Head- Products & Marketing)
For **Horiba India Pvt. Ltd.**

Blank Cycle Logs

Running Date Comments	Operator	WBC 10 ⁹ /µL	RBC 10 ¹² /µL	HGB g/dL	PLT 10 ⁹ /µL	Status	Technical alarms
12/26/2022 08:29:37 AM		0.00	0.00	0.0	0	Passed	
12/26/2022 02:43:46 PM		0.13	0.00	0.0	0	Passed	

Repeatability Report (part 1)

Sel	Run Date & Time	WBC (10 ³ /mm ³)	RBC (10 ⁶ /mm ³)	HGB (g/dL)	PLT (10 ³ /mm ³)	HCT (%)	MCV (fL)	RDW-CV (%)	RDW-SD (fL)	P-LCR (%)	MIC (%)
	26/12/2022 12:38:19 PM	8.95 *	4.70	13.9	251	41.6	88.3	15.4	53.4	48.3	1.3
	26/12/2022 12:39:18 PM	8.80 *	4.66	13.9	245	41.1	88.3	15.3	53.4	50.1	1.2
	26/12/2022 12:40:18 PM	8.65 *	4.65	13.9	248	41.0	88.2	15.1	52.2	48.8	1.2
	26/12/2022 12:41:18 PM	8.93 *	4.74	14.0	244	41.8	88.2	15.4	53.4	48.6	1.3
	26/12/2022 12:42:18 PM	8.76 *	4.74	13.9	253	41.9	88.4	15.3	53.4	47.1	1.2
	26/12/2022 12:43:18 PM	8.81 *	4.76	14.1	247	42.1	88.6	15.3	53.4	48.5	1.3
	26/12/2022 12:44:17 PM	8.95 *	4.77	14.1	252	42.3	88.7	15.3	53.4	49.1	1.2
	26/12/2022 12:45:17 PM	8.89	4.67	13.9	241	41.0	87.9	15.2	52.2	49.9	1.3
	26/12/2022 12:46:17 PM	8.96 *	4.81	14.0	248	42.5	88.4	15.3	53.4	47.7	1.3
	26/12/2022 12:47:16 PM	8.61 *	4.73	13.9	244	41.7	88.2	15.3	53.4	48.1	1.2

Sel	Run Date & Time	MAC (%)	NEU% (%)	LYM% (%)	MON% (%)	EOS% (%)	BAS% (%)	IMG% (%)	IMM% (%)	Operator
✓	26/12/2022 12:26:20 PM	4.9	64.7 *	27.7 *	5.0 *	2.3 *	0.3 *	1.7 *	0.3 *	Service Technician
✓	26/12/2022 12:27:20 PM	5.5	64.8 *	28.6 *	4.8 *	1.5 *	0.3 *	1.6 *	0.1 *	Service Technician
✓	26/12/2022 12:28:19 PM	5.9	63.5 *	28.7 *	5.2 *	2.2 *	0.4 *	1.0 *	0.2 *	Service Technician
✓	26/12/2022 12:29:19 PM	5.9	64.4 *	28.2 *	5.0 *	1.9 *	0.5 *	1.4 *	0.2 *	Service Technician
✓	26/12/2022 12:30:19 PM	5.9	62.5 *	29.8 *	5.2 *	1.9 *	0.6 *	0.9 *	0.2 *	Service Technician
✓	26/12/2022 12:31:19 PM	6.0	63.4 *	28.8 *	4.8 *	2.5 *	0.5 *	1.0 *	0.2 *	Service Technician
✓	26/12/2022 12:32:19 PM	6.1	63.9 *	29.0 *	4.7 *	1.8 *	0.6 *	1.0 *	0.2 *	Service Technician
✓	26/12/2022 12:33:19 PM	6.1	65.0 *	28.0 *	4.8 *	1.8 *	0.4 *	1.1 *	0.2 *	Service Technician
✓	26/12/2022 12:34:19 PM	6.0	62.9 *	29.0 *	5.5 *	2.1 *	0.5 *	0.9 *	0.1 *	Service Technician
✓	26/12/2022 12:35:19 PM	6.2	64.8 *	27.6 *	5.0 *	2.3 *	0.3 *	1.1 *	0.2 *	Service Technician
✓	26/12/2022 12:36:19 PM	5.9	64.4 *	28.3 *	5.2 *	1.6 *	0.5 *	0.8 *	0.1 *	Service Technician
	26/12/2022 12:37:19 PM	6.0	63.9 *	28.4 *	5.4 *	1.8 *	0.5 *	1.1 *	0.1 *	Service Technician
	26/12/2022 12:38:19 PM	6.3	64.1 *	28.0 *	5.2 *	2.2 *	0.5 *	0.9 *	0.2 *	Service Technician
	26/12/2022 12:39:18 PM	6.1	64.2 *	28.7 *	4.7 *	1.9 *	0.5 *	1.1 *	0.2 *	Service Technician
	26/12/2022 12:40:18 PM	5.9	64.9 *	27.9 *	5.2 *	1.7 *	0.3 *	0.9 *	0.2 *	Service Technician
	26/12/2022 12:41:18 PM	5.9	63.7 *	29.2 *	4.9 *	1.8 *	0.4 *	1.2 *	0.1 *	Service Technician

Repeatability Report (part 1)

Number of repeatability run report selected for statistic calculation 11/22

Coefficient	WBC (10 ³ /mm ³)	RBC (10 ⁶ /mm ³)	HGB (g/dL)	PLT (10 ³ /mm ³)	HCT (%)	MCV (fL)	RDW-CV (%)	RDW-SD (fL)	P-LCR (%)	MIC (%)
Minimum	8.62	4.63	13.6	234	40.7	86.0	13.7	45.3	45.2	1.3
Maximum	8.98	4.77	14.0	252	42.1	88.3	15.3	53.4	50.3	1.4
Mean	8.82	4.71	13.8	246	41.4	87.9	15.0	51.7	47.8	1.3
Difference	0.37	0.15	0.3	18	1.3	2.3	1.6	8.1	5.1	0.2
2 SD	0.19	0.08	0.2	10	0.8	1.3	0.9	4.6	3.3	0.1
CV(%)	1.08	0.86	0.78	2.11	0.96	0.72	3.00	4.41 H	3.48	3.53

Coefficient	MAC (%)	NEU% (%)	LYM% (%)	MON% (%)	EOS% (%)	BAS% (%)	IMG% (%)	IMM% (%)
Minimum	4.9	62.5	27.6	4.7	1.5	0.3	0.8	0.1
Maximum	6.2	65.0	29.8	5.5	2.5	0.6	1.7	0.3
Mean	5.9	64.0	28.5	5.0	2.0	0.4	1.1	0.2
Difference	1.3	2.5	2.2	0.8	1.0	0.3	0.9	0.2
2 SD	0.7	1.7	1.3	0.5	0.6	0.2	0.6	0.1
CV(%)	6.22	1.32	2.26	4.78	15.80	25.33	26.19	33.17

Sel	Run Date &Time	WBC (10 ³ /mm ³)	RBC (10 ⁶ /mm ³)	HGB (g/dL)	PLT (10 ³ /mm ³)	HCT (%)	MCV (fL)	RDW-CV (%)	RDW-SD (fL)	P-LCR (%)	MIC (%)
✓	26/12/2022 12:26:20 PM	8.76 *	4.73	13.7	249	40.7	86.0	13.7	45.3	50.3	1.4
✓	26/12/2022 12:27:20 PM	8.94 *	4.72	13.7	234	41.3	87.5	14.9	51.1	48.6	1.3
✓	26/12/2022 12:28:19 PM	8.62 *	4.68	13.6	251	41.2	88.0	15.1	52.2	46.6	1.3
✓	26/12/2022 12:29:19 PM	8.79 *	4.73	13.8	252	41.6	88.0	15.0	52.2	45.4	1.3
✓	26/12/2022 12:30:19 PM	8.98 *	4.69	13.9	243	41.2	88.0	15.1	52.2	47.8	1.3
✓	26/12/2022 12:31:19 PM	8.80 *	4.73	13.8	248	41.6	88.1	15.0	51.1	45.2	1.3
✓	26/12/2022 12:32:19 PM	8.85 *	4.63	13.9	244	40.9	88.3	15.3	53.4	49.2	1.3
✓	26/12/2022 12:33:19 PM	8.85 *	4.68	14.0	243	41.3	88.2	15.2	52.2	49.3	1.3
✓	26/12/2022 12:34:19 PM	8.82 *	4.70	13.9	245	41.5	88.2	15.3	53.4	47.8	1.3
✓	26/12/2022 12:35:19 PM	8.77 *	4.76	13.9	248	41.9	87.9	15.3	53.4	46.6	1.4
✓	26/12/2022 12:36:19 PM	8.84 *	4.77	13.9	251 *	42.1	88.1 *	15.1 *	52.2 *	48.8 *	1.3
	26/12/2022 12:37:19 PM	8.79 *	4.64	13.8	249	40.9	88.2	15.3	53.4	48.2	1.2

Repeatability Report (part 1)

Run Date & Time	MAC (%)	NEU% (%)	LYM% (%)	MON% (%)	EOS% (%)	BAS% (%)	IMG% (%)	IMM% (%)	Operator
26/12/2022 12:42:18 PM	6.3	63.5 *	29.5 *	4.5 *	2.1 *	0.4 *	1.0 *	0.1 *	Service Technician
26/12/2022 12:43:18 PM	6.2	63.7 *	28.9 *	4.8 *	2.0 *	0.6 *	0.9 *	0.2 *	Service Technician
26/12/2022 12:44:17 PM	6.3	63.5 *	28.8 *	4.6 *	2.4 *	0.7 *	1.2 *	0.2 *	Service Technician
26/12/2022 12:45:17 PM	5.9	64.0	28.8	4.8	2.0	0.4	0.8	0.2	Service Technician
26/12/2022 12:46:17 PM	6.3	64.1 *	28.1 *	5.2 *	2.1 *	0.5 *	1.2 *	0.1 *	Service Technician
26/12/2022 12:47:16 PM	5.9	64.1 *	28.2 *	5.1 *	2.0 *	0.6 *	1.0 *	0.2 *	Service Technician

Repeatability Report (part 2)

Number of repeatability run report selected for statistic calculation 11/22

Coefficient	IML% (%)	LIC% (%)	ALY% (%)
Minimum	0.0	1.5	3.7
Maximum	0.1	3.0	5.0
Mean	0.0	2.0	4.2
Difference	0.1	1.5	1.3
2 SD	0.1	0.9	0.7
CV(%)	331.66 H	21.74	8.09

Sel	Run Date &Time	IML% (%)	LIC% (%)	ALY% (%)	Operator
✓	26/12/2022 12:26:20 PM	0.0 *	3.0 *	5.0 *	Service Technician
✓	26/12/2022 12:27:20 PM	0.0 *	2.4 *	4.5 *	Service Technician
✓	26/12/2022 12:28:19 PM	0.0 *	1.9 *	3.9 *	Service Technician
✓	26/12/2022 12:29:19 PM	0.1 *	2.3 *	4.0 *	Service Technician
✓	26/12/2022 12:30:19 PM	0.0 *	1.8 *	4.1 *	Service Technician
✓	26/12/2022 12:31:19 PM	0.0 *	1.9 *	4.3 *	Service Technician
✓	26/12/2022 12:32:19 PM	0.0 *	1.6 *	4.2 *	Service Technician
✓	26/12/2022 12:33:19 PM	0.0 *	1.9 *	4.1 *	Service Technician
✓	26/12/2022 12:34:19 PM	0.0 *	1.7 *	4.1 *	Service Technician
✓	26/12/2022 12:35:19 PM	0.0 *	1.8 *	4.2 *	Service Technician
✓	26/12/2022 12:36:19 PM	0.0 *	1.5 *	3.7 *	Service Technician
	26/12/2022 12:37:19 PM	0.0 *	1.7 *	3.7 *	Service Technician
	26/12/2022 12:38:19 PM	0.0 *	1.6 *	3.8 *	Service Technician
	26/12/2022 12:39:18 PM	0.0 *	1.7 *	3.7 *	Service Technician
	26/12/2022 12:40:18 PM	0.0 *	1.6 *	4.0 *	Service Technician
	26/12/2022 12:41:18 PM	0.0 *	1.7 *	3.8 *	Service Technician
	26/12/2022 12:42:18 PM	0.0 *	1.6 *	4.4 *	Service Technician
	26/12/2022 12:43:18 PM	0.0 *	1.7 *	3.8 *	Service Technician
	26/12/2022 12:44:17 PM	0.0 *	1.8 *	3.8 *	Service Technician

Repeatability Report (part 2)

Sel	Run Date & Time	IML% (%)	LIC% (%)	ALY% (%)	Operator
	26/12/2022 12:45:17 PM	0.0	1.5	3.4	Service Technician
	26/12/2022 12:46:17 PM	0.0 *	1.9 *	3.8 *	Service Technician
	26/12/2022 12:47:16 PM	0.0 *	1.7 *	3.8 *	Service Technician

- **Calibration:** To calibrate the Instrument using calibrator (ABX Minocal) and verify the same.

Procedure: Go to Quality Assurance icon on main screen and then Calibration icon. Run Calibrator (ABX Minocal) 6 times, without taking the values of first run, calibrate the instrument using average of the 11 runs. Run Calibrator as a sample to verify the calibration.

Lot: CX477; Expiry: 05/01/2023.

Serial No: 211YADH04058

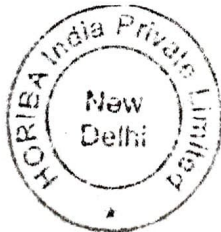
The screenshot shows the 'CALIBRATION' screen with the following details:

- Emergency Stop: QUAL COMM REAG SYST
- Home > Quality Assurance > Calibration
- Sample ID: CX477, Exp. date: 01/05/2023
- Lot number: CX477, Modified on: [blank]
- Name: MINOCALL

Coefficients		WBC	RBC	HGB	HCT	PLT
New	1.107	0.917	0.923	0.886	1.011	
Current	1.065	0.917	0.950	0.835	1.011	
Target	9.16	4.66	13.7	38.3	275	
Mean	9.11	4.73	14.0	39.1	277	
CV(%)	1.70	0.60	0.50	1.40	2.64	

Selected runs (5 minimum) 6/6

Run Date & Time	WBC (10 ⁹ /mm ³)	RBC (10 ⁶ /mm ³)	HGB (g/dL)	HCT (%)	PLT (10 ³ /mm ³)
12/23/2022 12:43:11 PM	8.85 f	4.73 h	14.0 h	40.0 h	269
12/23/2022 12:44:41 PM	9.20	4.73 h	14.0 h	39.1	276
12/23/2022 12:45:51 PM	9.01	4.70	13.9	38.6	272
12/23/2022 12:47:06 PM	9.13	4.78 h	13.9	39.1	273
12/23/2022 12:49:55 PM	9.22	4.74 h	14.0 h	39.0	289 h
12/23/2022 12:51:15 PM	9.26	4.70	14.0 h	38.5	282



Conducted By:

Verified By:

ACCURACY 1 Day ~~MORNING~~ EVENING

QC - Control Run Report

Run Date 12/23/2022 01:28:19 PM

Operator LAB

Name DIFFTROL L

Sample ID PX439L

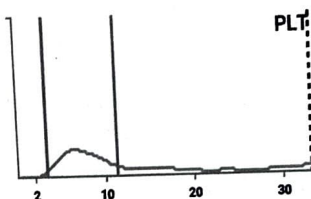
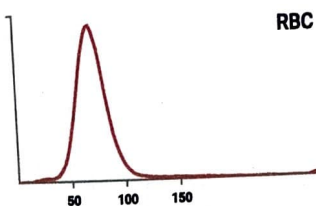
Level Low

Exp. date 03/05/2023

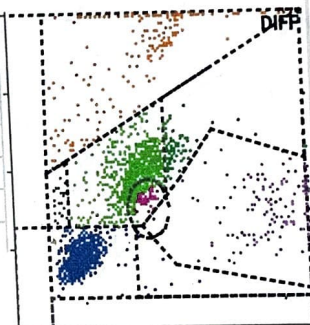
Lot number PX439L

Alarms

CBC			Range
WBC	3.36	10 ³ /mm ³	2.63 - 3.43
RBC	2.41	10 ⁶ /mm ³	2.23 - 2.55
HGB	6.0	g/dL	5.7 - 6.5
HCT	17.7	%	15.8 - 18.8
MCV	73.7	fL	67.2 - 77.2
MCH	24.7	pg	23.5 - 27.5
MCHC	33.6	g/dL	32.4 - 38.4
RDW-CV	15.1	%	10.9 - 18.9
RDW-SD	40.6	fL	29.1 - 45.1
PLT	84	10 ³ /mm ³	67 - 107
MPV	10.5	fL	8.4 - 12.4



DIF				
	%	Range	10 ³ /mm ³	Range
NEU	45.3	34.8 - 54.8	1.52	1.01 - 1.71
LYM	37.2	26.1 - 50.1	1.25	0.82 - 1.48
MON	6.2	0.2 - 15.2	0.21	0.02 - 0.44
EOS	8.9	1.2 - 11.2	0.30	0.05 - 0.33
BAS	2.4	2.1 - 4.3	0.08	0.07 - 0.13
IMG	5.0	0.0 - 8.0	0.17	0.00 - 0.24



Raw Data

PLT counts

S1	S2	S3	S4	S5	S6
81	101	94	104	104	97
S7	S8	S9	S10	S11	S12
83	108	72	67	94	100

RBC counts

S1	S2	S3	S4	S5	S6
2436	2446	2545	2558	2407	2438
S7	S8	S9	S10	S11	S12
2444	2362	2439	2506	2368	2328

WBC counts

S1	S2	S3	S4	S5	S6
234	250	221	236	230	236
S7	S8	S9	S10	S11	
230	220	263	229	246	

HGB measures

LI1	LI2	LI3	LI4	LI5	LI6
3848	3846	3839	1823	1823	1823
LI7	LI8	LI9	LI10	LI11	LI12
1823	1824	1824	1824	1824	1825
LI13					
1824					

RMeasured: 2421
Correlated: 2384
Optical: 195

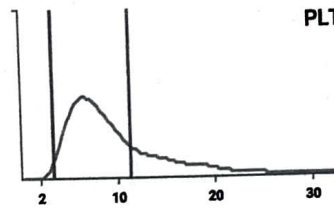
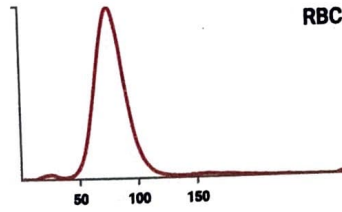
Paul 26/12/2022

Name DIFFTROL N
 Level Normal
 Lot number PX439N

Operator LAB
 Sample ID PX439N
 Exp. date 03/05/2023

CBC

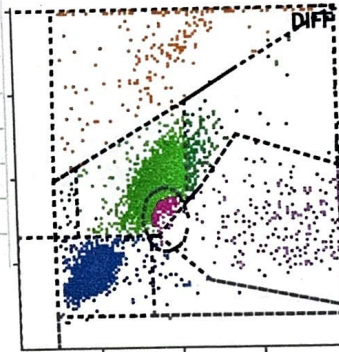
			Range
WBC	8.60	10 ³ /mm ³	7.55 - 9.55
RBC	4.70	10 ⁶ /mm ³	4.50 - 4.90
HGB	13.4	g/dL	13.0 - 14.0
HCT	37.9	%	36.2 - 40.2
MCV	80.7	fL	76.4 - 86.4
MCH	28.4	pg	26.7 - 30.7
MCHC	35.3	g/dL	32.3 - 38.3
RDW-CV	12.9	%	8.8 - 16.8
RDW-SD	38.3	fL	29.5 - 45.5
PLT	256	10 ³ /mm ³	233 - 293
MPV	8.8	fL	7.2 - 11.2



Alarms

DIF

	%	Range	10 ³ /mm ³	Range
NEU	44.9	35.5 - 55.5	3.86	2.99 - 4.79
LYM	43.0	35.1 - 51.1	3.69	2.99 - 4.39
MON	5.1	0.3 - 10.7	0.44	0.04 - 0.90
EOS	4.0	0.1 - 6.3	0.35	0.02 - 0.52
BAS	3.0	1.6 - 3.8	0.26	0.14 - 0.32
IMG	3.7	0.0 - 7.4	0.32	0.00 - 0.64



Raw Data

PLT counts

S1	S2	S3	S4	S5	S6
223	234	235	210	254	243
S7	S8	S9	S10	S11	S12
222	243	248	241	244	251

RBC counts

S1	S2	S3	S4	S5	S6
4408	4304	4452	4394	4428	4394
S7	S8	S9	S10	S11	S12
4406	4326	4353	4441	4404	4345

WBC counts

S1	S2	S3	S4	S5	S6
581	618	621	590	574	665
S7	S8	S9	S10	S11	S12
583	560	601	600	623	

HGB measures

LI1	LI2	LI3	LI4	LI5	LI6
3836	3837	3838	773	773	773
LI7	LI8	LI9	LI10	LI11	LI12
773	773	773	774	773	774
LI13					
773					

RMeasured: 5926
 Correlated: 5901
 Optical 196

Handwritten signature and date: 26/12/2022

QC - Control Run Report

Run Date 12/23/2022 01:07:44 PM

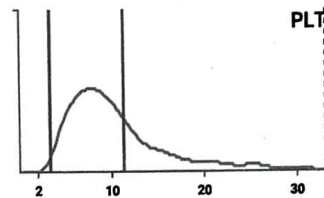
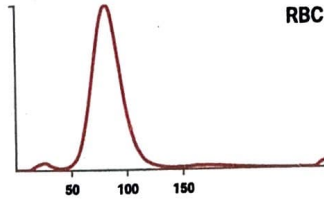
Operator LAB

Name DIFFTROL H
Level High
Lot number PX439H

Sample ID PX439H
Exp. date 03/05/2023

CBC

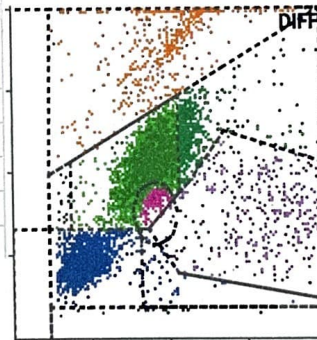
			Range
WBC	18.48	10 ³ /mm ³	16.50 - 20.90
RBC	5.17	10 ⁶ /mm ³	4.99 - 5.49
HGB	15.7	g/dL	15.5 - 16.7
HCT	44.6	%	42.9 - 47.9
MCV	86.2	fL	81.7 - 91.7
MCH	30.4	pg	28.2 - 33.2
MCHC	35.3	g/dL	32.4 - 38.4
RDW-CV	12.4	%	8.5 - 16.5
RDW-SD	39.5	fL	31.3 - 47.3
PLT	536	10 ³ /mm ³	467 - 567
MPV	9.0	fL	7.3 - 11.3



Alarms

DIF

	%	Range	10 ³ /mm ³	Range
NEU	67.8	58.5 - 78.5	12.54	10.91 - 14...
LYM	21.0	12.6 - 28.6	3.88	2.35 - 5.35
MON	3.9	0.5 - 7.7	0.72	0.11 - 1.43
EOS	4.5	0.1 - 7.1	0.83	0.03 - 1.31
BAS	2.8	1.9 - 4.5	0.51	0.36 - 0.84
IMG	6.6	0.1 - 10.9	1.21	0.09 - 1.97



Raw Data

PLT counts

S1	S2	S3	S4	S5	S6
439	416	407	460	460	449
S7	S8	S9	S10	S11	S12
411	387	424	431	457	479

RBC counts

S1	S2	S3	S4	S5	S6
4849	4839	4763	4733	4819	4863
S7	S8	S9	S10	S11	S12
4933	4740	4769	4855	4809	4843

WBC counts

S1	S2	S3	S4	S5	S6
1264	1288	1279	1248	1303	1235
S7	S8	S9	S10	S11	S12
1354	1317	1245	1270	1306	

HBG measures

LI1	LI2	LI3	LI4	LI5	LI6
3839	3839	3839	598	599	599
LI7	LI8	LI9	LI10	LI11	LI12
598	599	599	599	599	599
LI13					
599					

RMeasured: 11469
Correlated: 11431
Optical 196

Paul
26/12/2022

QC - Control Run Report

Run Date 09/08/2023 03:20:20 PM

Operator REDCLIFFELAB

Name DIFFTROL N

Sample ID PX442N

Level Normal

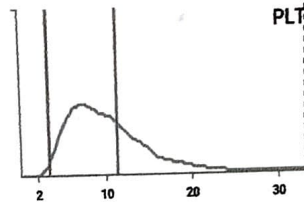
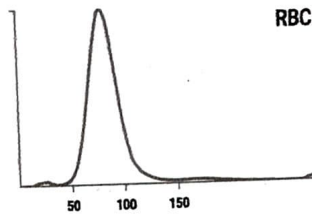
Exp. date 05/09/2023

Lot number PX442N

Alarms

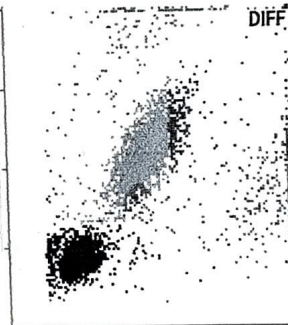
CBC

			Range
WBC	8.78	10 ³ /mm ³	7.30 - 9.30
RBC	4.80	10 ⁶ /mm ³	4.48 - 4.88
HGB	13.6	g/dL	13.0 - 14.0
HCT	40.7	%	36.9 - 40.9
MCV	84.8	fL	78.1 - 88.1
MCH	28.3	pg	26.8 - 30.8
MCHC	33.4	g/dL	31.7 - 37.7
RDW-CV	13.1	%	9.1 - 17.1
RDW-SD	38.1	fL	29.4 - 45.4
PLT	291	10 ³ /mm ³	243 - 303
MPV	9.0	fL	7.2 - 11.2



DIF

	%	Range	10 ³ /mm ³	Range
NEU	50.3	37.4 - 57.4	4.42	3.03 - 4.83
LYM	39.0	32.5 - 48.5	3.42	2.66 - 4.06
MON	5.0	0.4 - 11.2	0.44	0.03 - 0.93
EOS	3.3	0.3 - 5.9	0.29	0.03 - 0.49
BAS	2.4	0.0 - 6.4	0.21	0.00 - 0.54
IMG	5.5	0.0 - 8.6	0.48	0.00 - 0.72



9/8/23
Bauer

QC - Control Run Report

Run Date 09/08/2023 07:36:27 AM

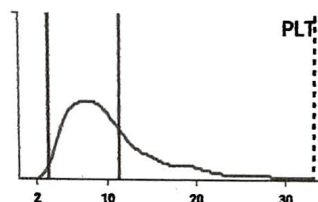
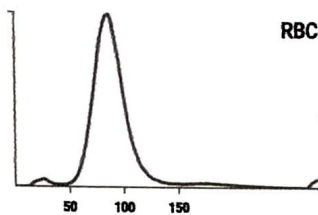
Operator REDCLIFFELAB

Name DIFFTROL H
 Level High
 Lot number PX442H

Sample ID PX442HH
 Exp. date 05/09/2023

CBC

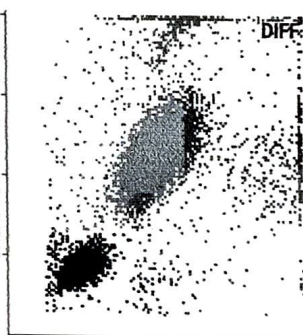
			Range
WBC	18.34	10 ³ /mm ³	15.40 - 19.80
RBC	5.28	10 ⁶ /mm ³	5.08 - 5.58
HGB	16.8	g/dL	15.9 - 17.1
HCT	48.2	%	45.1 - 50.1
MCV	91.3	fL	84.3 - 94.3
MCH	31.7	pg	28.5 - 33.5
MCHC	34.8	g/dL	31.7 - 37.7
RDW-CV	12.7	%	8.6 - 16.6
RDW-SD	40.2	fL	30.2 - 46.2
PLT	500	10 ³ /mm ³	458 - 558
MPV	9.3	fL	7.2 - 11.2



Alarms

DIF

	%	Range	10 ³ /mm ³	Range
NEU	73.2	59.9 - 79.9	13.44	10.4 - 14.2
LYM	17.2	10.3 - 26.3	3.15	1.72 - 4.72
MON	2.9	0.6 - 6.6	0.53	0.10 - 1.16
EOS	5.1	0.1 - 9.1	0.93	0.02 - 1.60
BAS	1.6	0.0 - 7.2	0.29	0.00 - 1.26
IMG	6.5	0.0 - 12.8	1.19	0.00 - 2.22



Rajeev
 9/8/23