

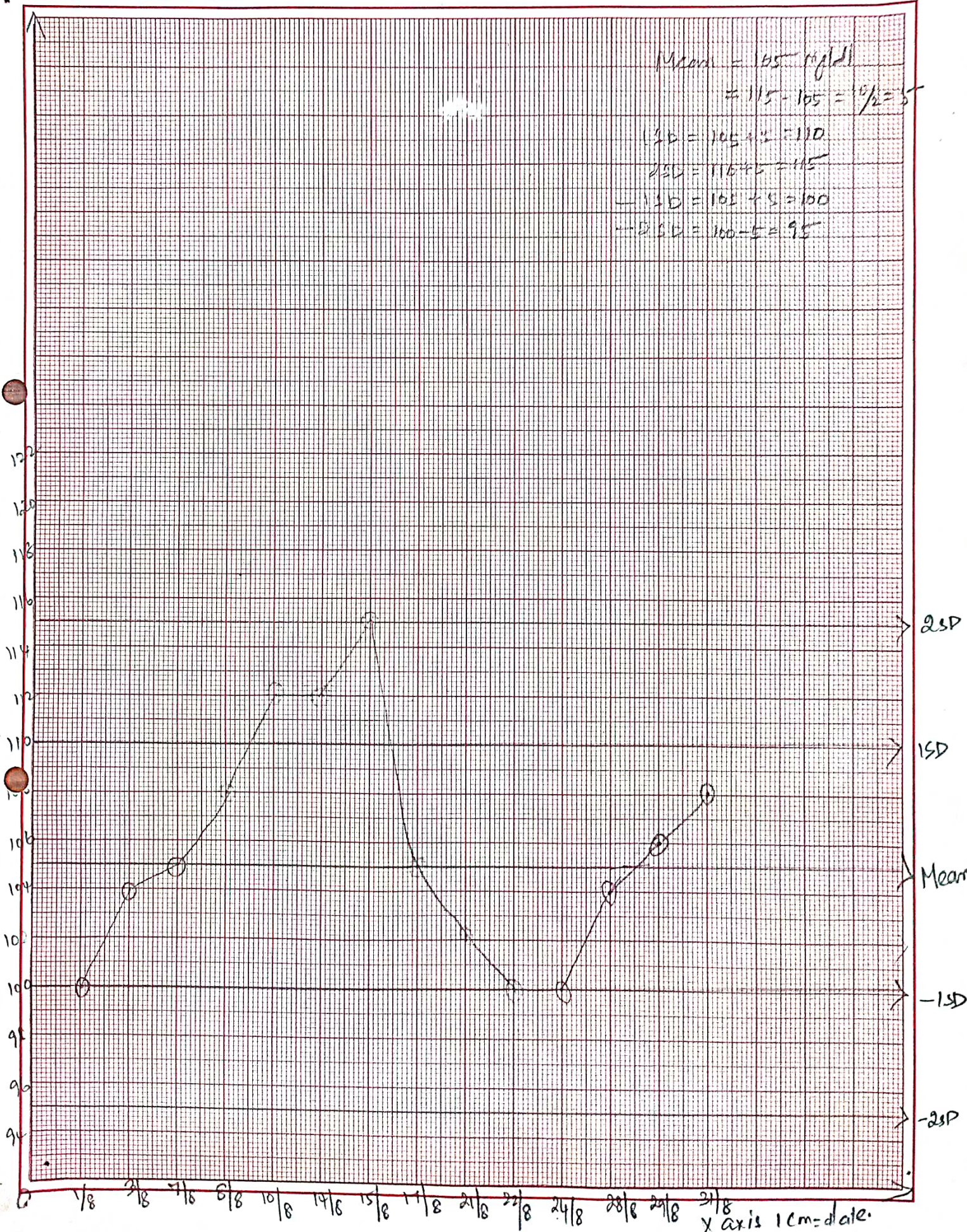
Batch No:

GLUCOSE - AUGUST

Mean = 105 mg/dl.
Range = 95 - 115
Date:

Mean = 105 mg/dl
 $\pm 115 - 105 = \frac{10}{2} = 5$
+1SD = 105 + 5 = 110
+2SD = 110 + 5 = 115
-1SD = 105 - 5 = 100
-2SD = 100 - 5 = 95

Y-axis 1cm = 2unit
Concentration of Glucose.



2SD
1SD
Mean
-1SD
-2SD

X axis 1cm = date.