

Legit Medical Diagnostics

MONTHLY HAEMATOLOGY

CYCLE 16 SAMPLE 7

Explanation of codes used in this report

R - Results removed due to reconstitution error
N - No result returned
C - Result corrected

Authorised by: Sally Picton, RIQAS Manager

Issue No: 1

Issue Date: 12/07/2023

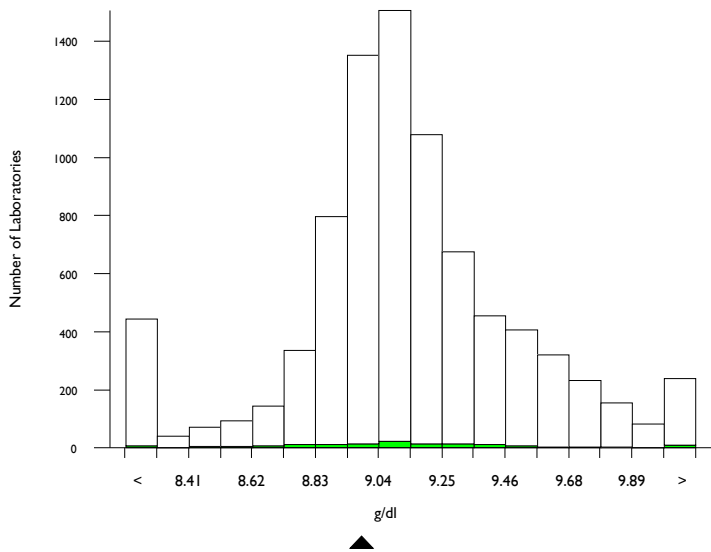
Randox Laboratories Limited
55 Diamond Road
CRUMLIN BT29 4QY
Tel: +44 (0)28 9445 4399
Fax: +44 (0)28 9445 4398
Email: mail@riqas.com

Haemoglobin, g/dl

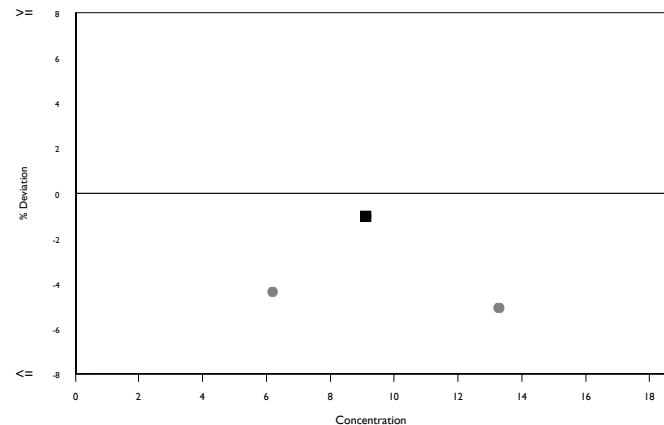
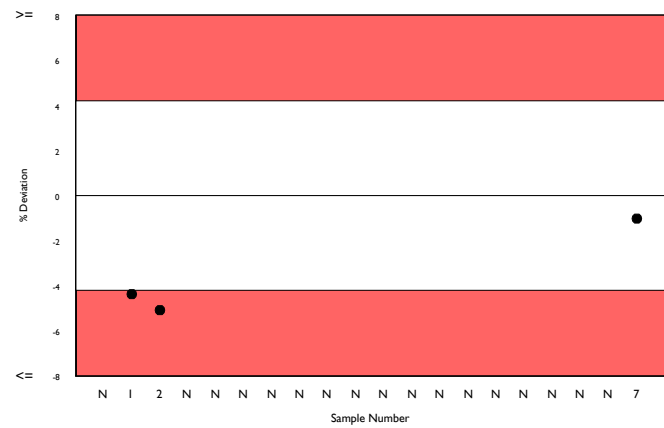
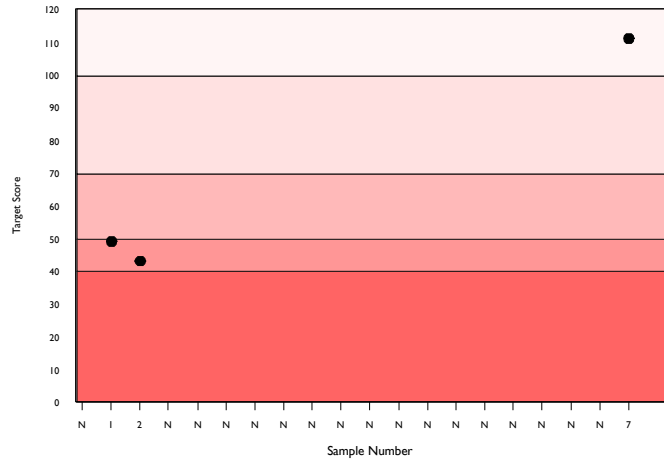
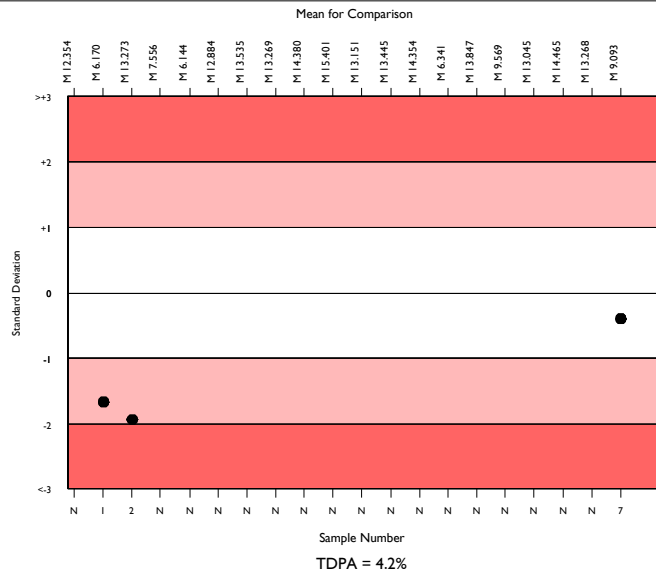
	N	Mean	CV%	U _m	SDPA	Exc.
All Methods	7771	9.153	3.1	0.00	0.23	656
ABX Micros/Minos/ABC VET	135	9.093	3.6	0.03	0.23	15

▲ Your Result	9.000	SDI	-0.40
		RMSDI	Too Few
■ Mean for Comparison	9.093	TS	111
		RMTS	Too Few
		%DEV	-1.0
		RM%DEV	Too Few

Acceptable limits derived from Biological Variation	N/A
Acceptable limits of performance for RIQAS	4.20%



Method	N	Mean	CV%	U _m
Sysmex XN Series	1687	9.093	1.2	0.00
Sysmex XN-L Series (330/350/450/550)	665	8.972	1.1	0.00
Mindray BC-6000/6200/6600/6800/6800Plus	384	9.138	1.4	0.01
Abbott Cell-Dyn Ruby	351	9.470	1.8	0.01
Beckman Coulter DxH 600/800/900 Series	353	9.006	1.1	0.01
Sysmex XP Series	319	9.059	2.2	0.01
Mindray BC 1000/2000/3000 series	297	9.238	2.9	0.02
Nihon Kohden Celltac Alpha/plus	269	9.472	2.9	0.02
Calculated from HCT	246	7.984	3.8	0.02
Sysmex XS series	253	9.040	1.4	0.01
Siemens/Bayer Advia 120/2120	236	9.617	1.7	0.01
Mindray BC 5100/5180/5300/5380/5390	173	9.312	2.0	0.02
Manual Methods	162	8.055	4.8	0.04
Mindray BC 5000/5150/5140/5130/5120	147	9.106	1.6	0.01
ABX Micros/Minos/ABC VET	135	9.093	3.6	0.03
Sysmex XT series	125	9.092	1.2	0.01
Mindray BC 10/20/30	125	9.411	2.3	0.02
Beckman Coulter DxH 500 Series	111	8.705	2.4	0.02
Horiba Yumizen H500/ 550	105	9.066	1.5	0.02
Sysmex KX 21	104	9.057	2.2	0.02
Horiba ABX Pentra 60/80/XLR	99	9.110	1.5	0.02

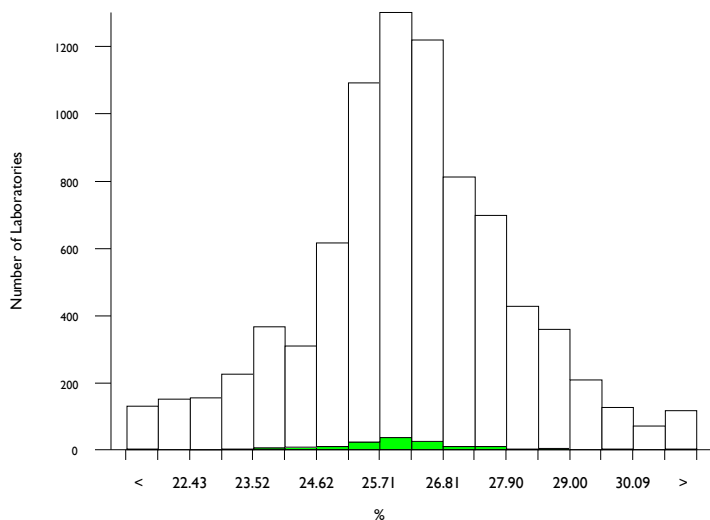


Haematocrit (HCT), %

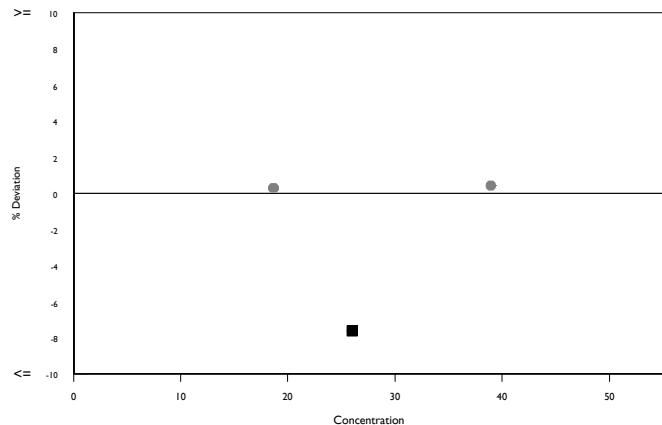
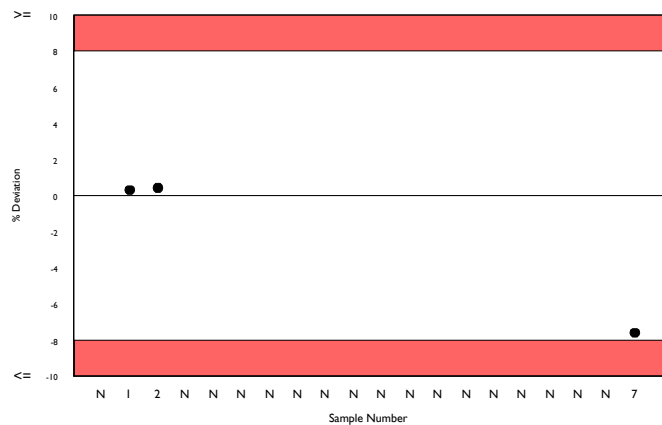
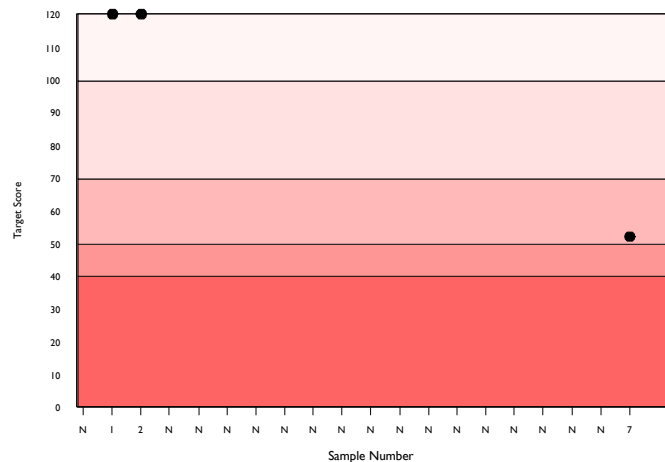
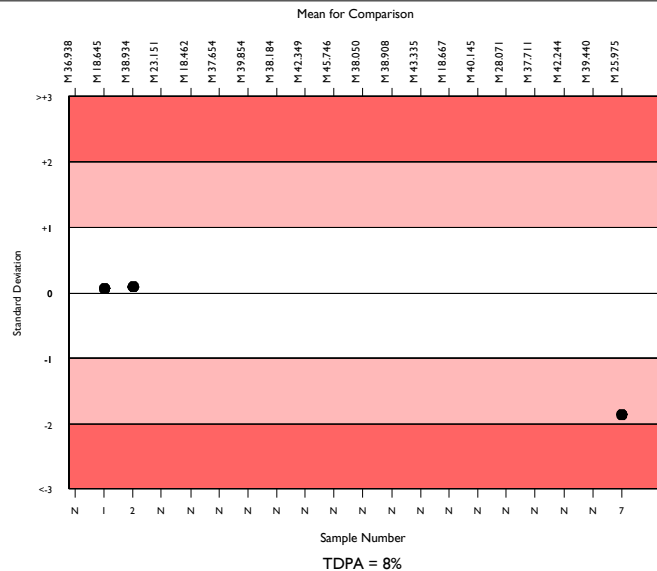
	N	Mean	CV%	U _m	SDPA	Exc.
All Methods	7780	26.264	5.6	0.02	1.07	612
ABX Micros/Minos/ABC VET	133	25.975	3.7	0.11	1.06	16

▲ Your Result	24.000	SDI	-1.86
		RMSDI	Too Few
■ Mean for Comparison	25.975	TS	52
		RMTS	Too Few
		%DEV	-7.6
		RM%DEV	Too Few

Acceptable limits derived from Biological Variation	N/A
Acceptable limits of performance for RIQAS	8.00%



Method	N	Mean	CV%	U _m
Sysmex XN Series	1703	25.989	2.0	0.02
Sysmex XN-L Series (330/350/450/550)	670	25.907	2.2	0.03
Mindray BC-6000/6200/6600/6800/6800Plus	377	28.996	2.0	0.04
Beckman Coulter DxH 600/800/900 Series	348	27.429	1.6	0.03
Abbott Cell-Dyn Ruby	342	22.494	2.8	0.04
Sysmex XP Series	308	24.782	2.6	0.05
Mindray BC 1000/2000/3000 series	292	26.874	3.5	0.07
Microhematocrit Centrifugation	280	24.351	3.1	0.06
Nihon Kohden Celltac Alpha/plus	275	27.624	3.5	0.07
Sysmex XS series	247	26.492	2.4	0.05
Siemens/Bayer Advia 120/2120	231	23.795	2.7	0.05
Mindray BC 5100/5180/5300/5380/5390	160	27.660	2.6	0.07
Manual Methods	167	24.290	3.5	0.08
Mindray BC 5000/5150/5140/5130/5120	151	27.216	2.8	0.08
ABX Micros/Minos/ABC VET	133	25.975	3.7	0.11
Sysmex XT series	130	26.753	2.5	0.07
Mindray BC 10/20/30	121	26.989	2.8	0.09
Beckman Coulter DxH 500 Series	109	26.617	2.5	0.08
Horiba Yumizen H500/ 550	107	25.645	3.0	0.09
Sysmex KX 21	101	25.022	2.7	0.08
Horiba ABX Pentra 60/80/XLR	99	25.263	2.2	0.07

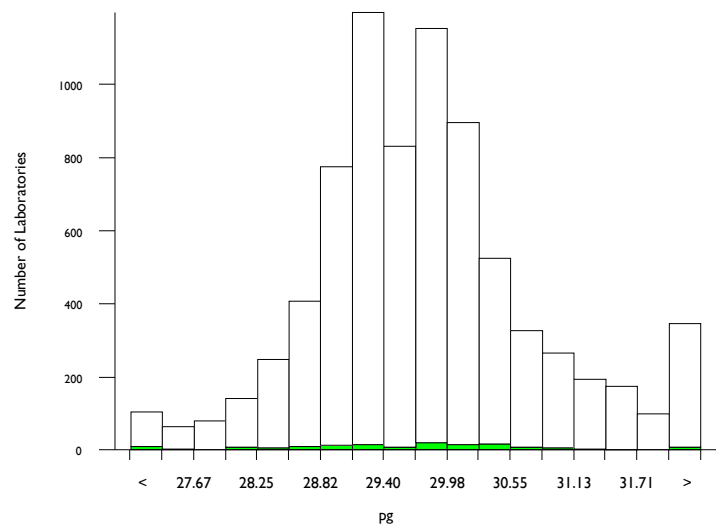
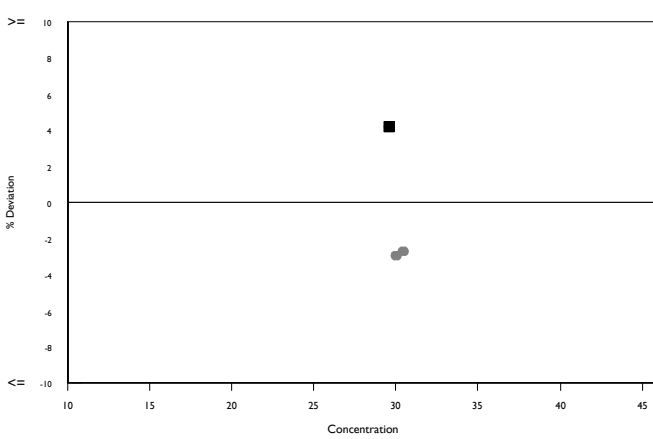
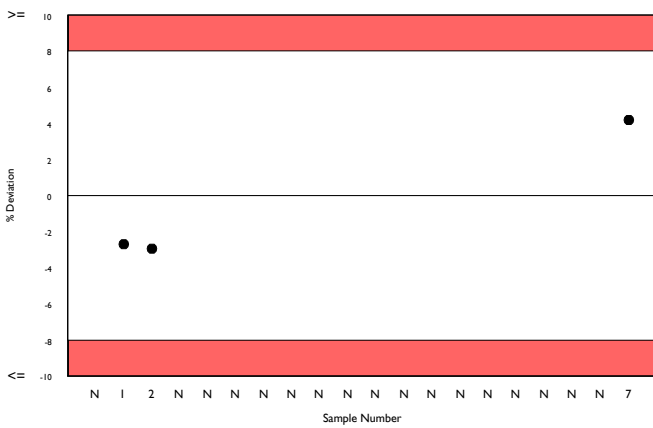
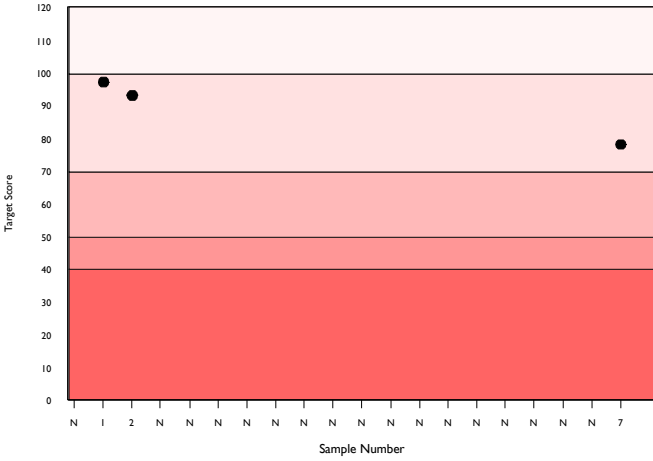
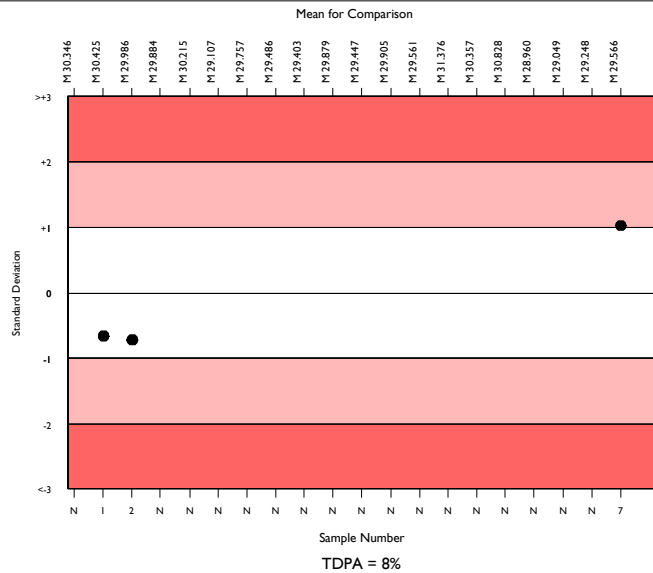


MCH, pg

	N	Mean	CV%	U _m	SDPA	Exc.
All Methods	7186	29.692	2.6	0.01	1.21	631
ABX Micros/Minos/ABC VET	127	29.566	3.1	0.10	1.21	14

▲ Your Result	30.800	SDI	1.02
		RMSDI	Too Few
■ Mean for Comparison	29.566	TS	78
		RMTS	Too Few
		%DEV	4.2
		RM%DEV	Too Few

Acceptable limits derived from Biological Variation	N/A
Acceptable limits of performance for RIQAS	8.00%



Method	N	Mean	CV%	U _m
Sysmex XN Series	1720	29.593	1.4	0.01
Sysmex XN-L Series (330/350/450/550)	663	29.578	1.3	0.02
Mindray BC-6000/6200/6600/6800/6800Plus	378	29.379	1.6	0.03
Beckman Coulter DxH 600/800/900 Series	347	29.172	1.5	0.03
Abbott Cell-Dyn Ruby	347	31.179	2.5	0.05
Sysmex XP Series	313	29.317	2.4	0.05
Mindray BC 1000/2000/3000 series	287	29.385	3.4	0.07
Nihon Kohden Celltac Alpha/plus	267	30.125	3.5	0.08
Sysmex XS series	243	29.574	1.7	0.04
Siemens/Bayer Advia 120/2120	225	30.553	2.0	0.05
Mindray BC 5100/5180/5300/5380/5390	166	30.230	1.9	0.06
Mindray BC 5000/5150/5140/5130/5120	148	29.931	2.4	0.08
ABX Micros/Minos/ABC VET	127	29.566	3.1	0.10
Sysmex XT series	125	29.241	1.5	0.05
Mindray BC 10/20/30	124	30.877	3.3	0.11
Beckman Coulter DxH 500 Series	107	28.339	2.5	0.09
Horiba Yumizen H500/ 550	108	29.405	1.9	0.07
Sysmex KX 21	101	29.500	2.2	0.08
Horiba ABX Pentra 60/80/XLR	96	29.672	1.4	0.05
Boule Medonic/ Swelab 3-part diff	87	31.721	2.1	0.09
Nihon Kohden Celltac E/Es	80	29.980	2.1	0.09

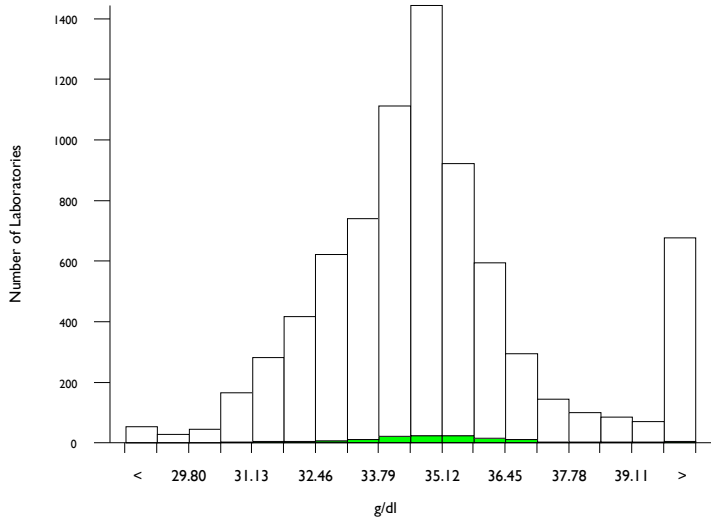


MCHC, g/dl

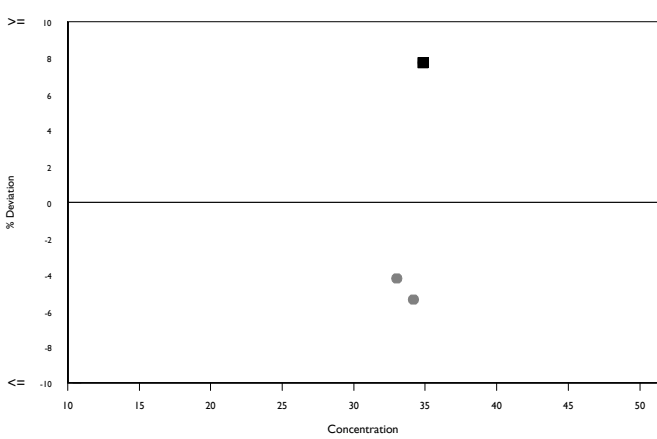
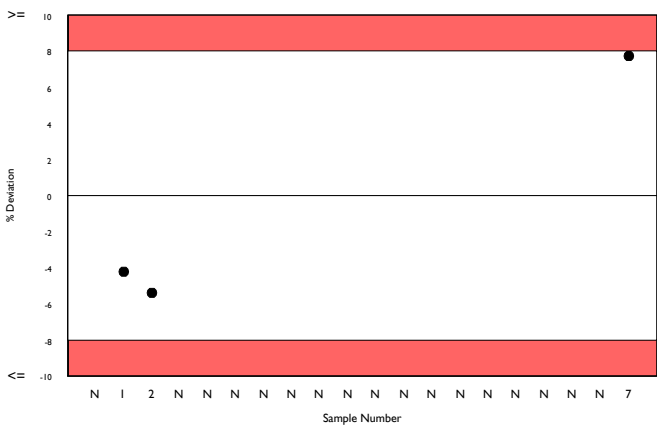
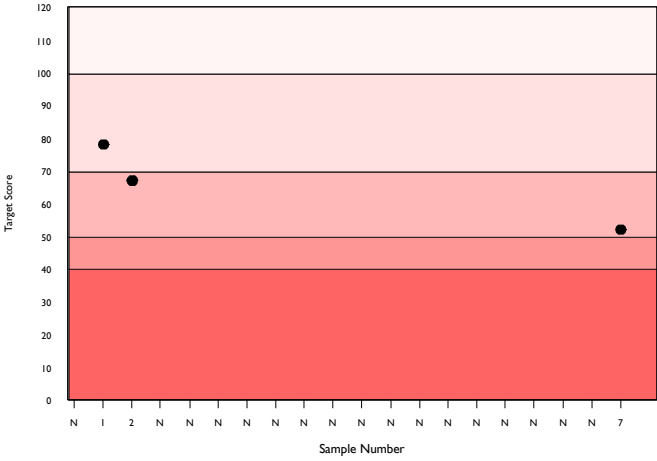
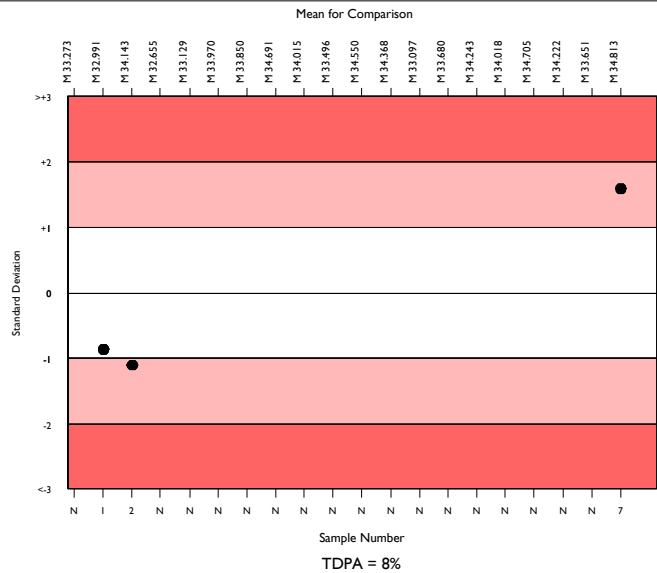
	N	Mean	CV%	U _m	SDPA	Exc.
All Methods	7090	34.459	5.1	0.03	1.68	707
ABX Micros/Minos/ABC VET	126	34.813	4.0	0.15	1.69	14

▲ Your Result	37.500	SDI	1.59
		RMSDI	Too Few
■ Mean for Comparison	34.813	TS	52
		RMTS	Too Few
		%DEV	7.7
		RM%DEV	Too Few

Acceptable limits derived from Biological Variation	N/A
Acceptable limits of performance for RIQAS	8.00%



Method	N	Mean	CV%	U _m
Sysmex XN Series	1704	34.965	2.1	0.02
Sysmex XN-L Series (330/350/450/550)	661	34.594	1.9	0.03
Mindray BC-6000/6200/6600/6800/6800Plus	370	31.481	1.8	0.04
Beckman Coulter DxH 600/800/900 Series	348	32.840	1.8	0.04
Abbott Cell-Dyn Ruby	327	42.118	2.8	0.08
Sysmex XP Series	309	36.487	3.3	0.09
Mindray BC 1000/2000/3000 series	283	34.140	4.0	0.10
Nihon Kohden Celltac Alpha/plus	256	34.287	3.9	0.10
Sysmex XS series	242	34.105	2.4	0.07
Siemens/Bayer Advia 120/2120	218	40.478	2.8	0.10
Mindray BC 5100/5180/5300/5380/5390	166	33.692	2.9	0.09
Mindray BC 5000/5150/5140/5130/5120	146	33.533	2.4	0.08
ABX Micros/Minos/ABC VET	126	34.813	4.0	0.15
Sysmex XT series	128	34.010	2.5	0.09
Mindray BC 10/20/30	122	34.870	3.5	0.14
Beckman Coulter DxH 500 Series	105	32.627	2.6	0.10
Horiba Yumizen H500/ 550	108	35.389	3.0	0.13
Sysmex KX 21	102	36.377	3.5	0.16
Horiba ABX Pentra 60/80/XLR	98	36.000	1.9	0.09
Boule Medonic/ Swelab 3-part diff	89	37.517	3.8	0.19
Nihon Kohden Celltac E/Es	78	33.540	2.3	0.11

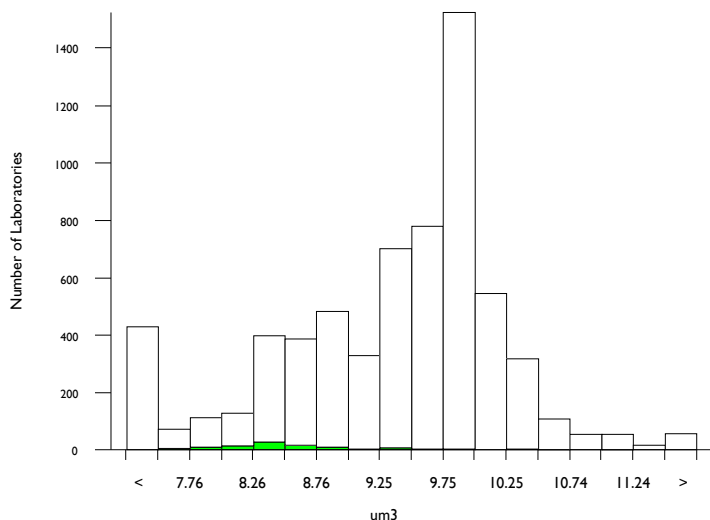


Mean Platelet Volume, um³

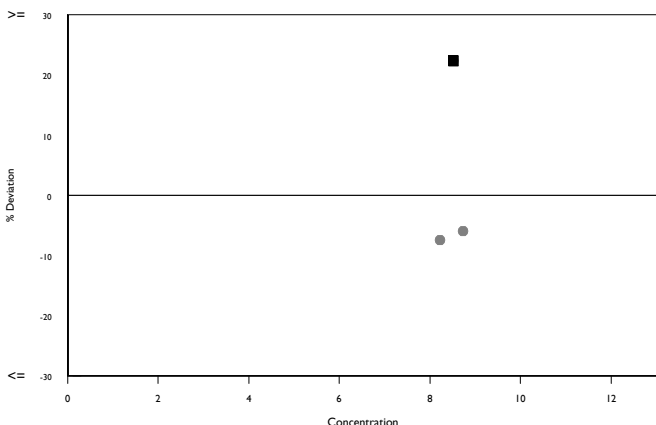
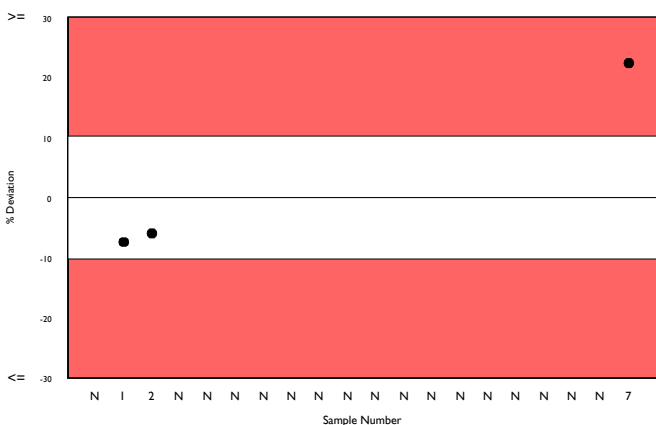
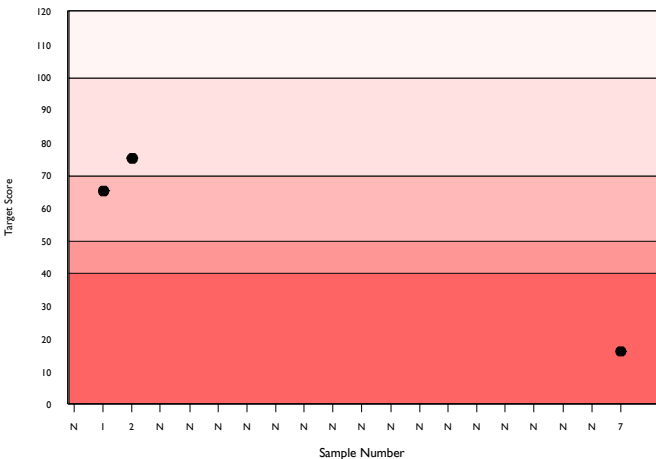
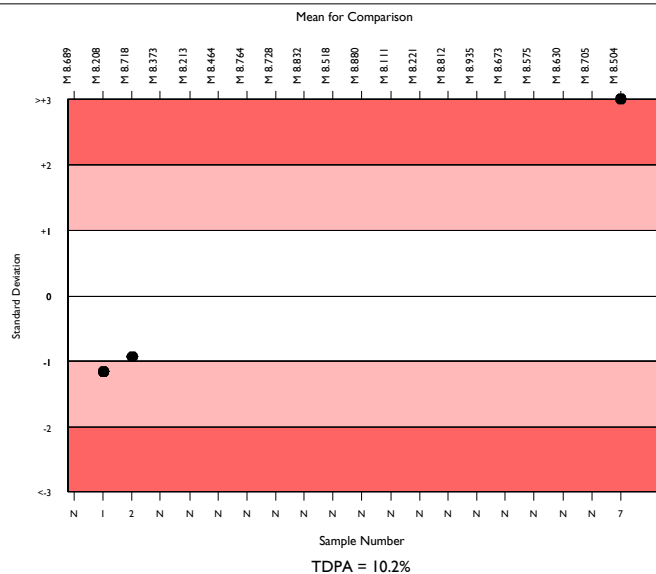
	N	Mean	CV%	U _m	SDPA	Exc.
All Methods	5906	9.507	7.0	0.01	0.59	588
ABX Micros/Minos/ABC VET	95	8.504	5.7	0.06	0.53	8

▲ Your Result	10.400	SDI	3.60
		RMSDI	Too Few
■ Mean for Comparison	8.504	TS	16
		RMTS	Too Few
		%DEV	22.3
		RM%DEV	Too Few

Acceptable limits derived from Biological Variation	N/A
Acceptable limits of performance for RIQAS	10.20%
SDI in bottom 5% of peer group	
TS & %DEV outside limits	



Method	N	Mean	CV%	U _m
Sysmex XN Series	1426	9.848	1.8	0.01
Sysmex XN-L Series (330/350/450/550)	458	9.901	1.9	0.01
Mindray BC-6000/6200/6600/6800/6800Plus	346	10.193	3.7	0.03
Beckman Coulter DxH 600/800/900 Series	281	8.610	2.4	0.02
Sysmex XP Series	258	9.261	2.0	0.01
Mindray BC 1000/2000/3000 series	267	9.044	6.1	0.04
Abbott Cell-Dyn Ruby	261	4.203	7.2	0.02
Nihon Kohden Celltac Alpha/plus	230	8.549	5.6	0.04
Sysmex XS series	207	9.835	2.4	0.02
Siemens/Bayer Advia 120/2120	173	10.790	5.1	0.05
Mindray BC 5000/5150/5140/5130/5120	127	10.116	1.9	0.02
Mindray BC 5100/5180/5300/5380	111	8.916	2.9	0.03
Sysmex XT series	107	9.566	2.5	0.03
Mindray BC 10/20/30	100	9.778	1.9	0.02
ABX Micros/Minos/ABC VET	95	8.504	5.7	0.06
Horiba Yumizen H500/ 550	95	10.147	4.0	0.05
Beckman Coulter DxH 500 Series	93	8.798	2.9	0.03
Sysmex KX 21	80	9.160	2.4	0.03
Horiba ABX Pentra 60/80/XLR	82	9.421	3.0	0.04
Boule Medonic/ Swelab 3-part diff	77	8.761	3.8	0.05
Erba Lachema Elite series	68	9.326	4.2	0.06

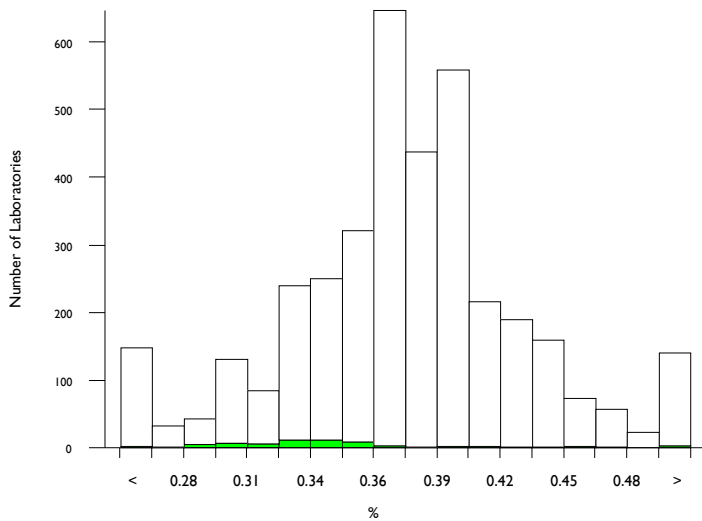


Plateletcrit, %

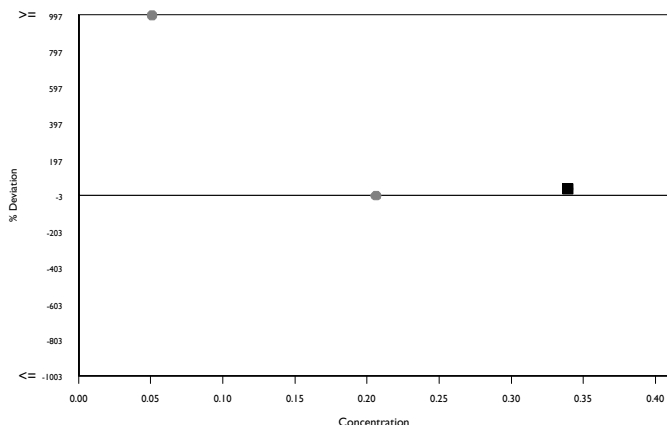
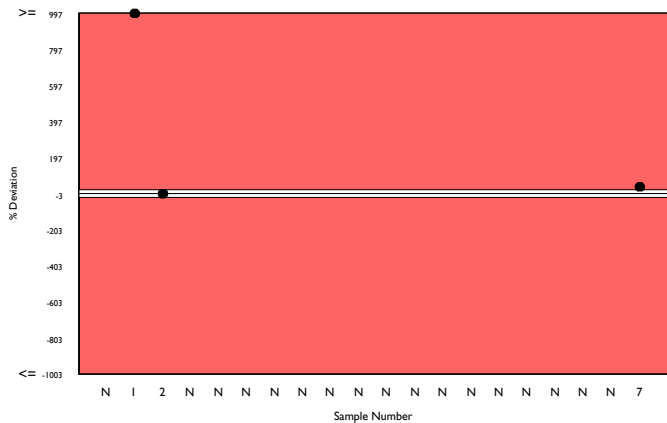
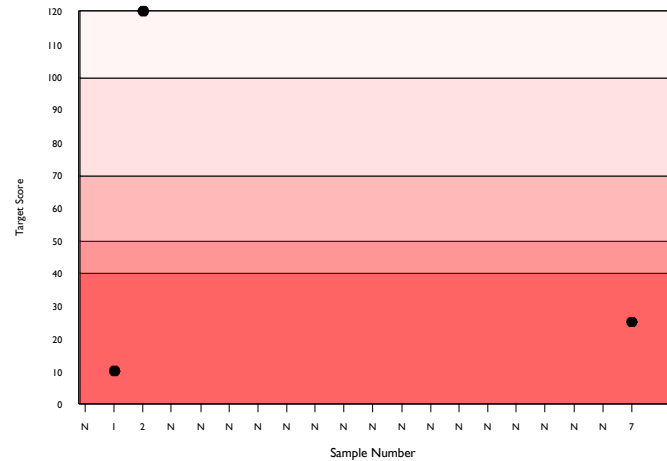
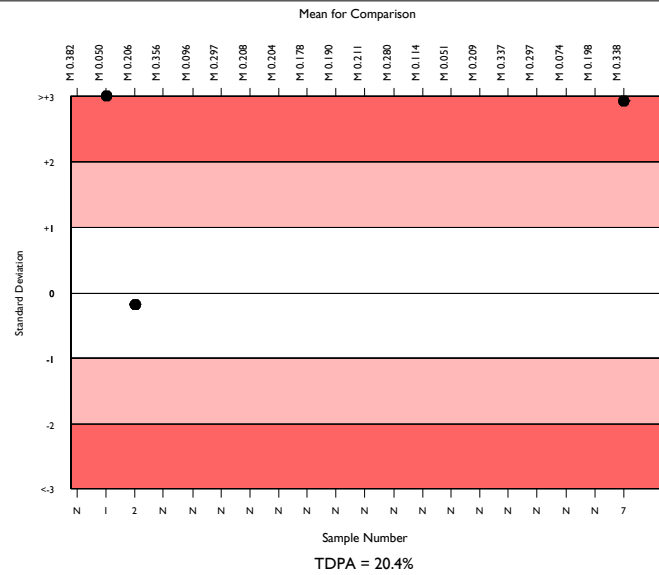
	N	Mean	CV%	U _m	SDPA	Exc.
All Methods	3374	0.383	9.9	0.00	0.05	373
ABX Micros/Minos/ABC VET	61	0.338	9.7	0.01	0.04	9

▲ Your Result	0.461	SDI	2.93
		RMSDI	Too Few
■ Mean for Comparison	0.338	TS	25
		RMTS	Too Few
		%DEV	36.2
		RM%DEV	Too Few

Acceptable limits derived from Biological Variation	N/A
Acceptable limits of performance for RIQAS	20.40%
SDI in bottom 5% of peer group	
TS & %DEV outside limits	



Method	N	Mean	CV%	U _m
Sysmex XN Series	717	0.380	4.7	0.00
Mindray BC-6000/6200/6600/6800/6800Plus	258	0.426	5.5	0.00
Mindray BC 1000/2000/3000 series	239	0.371	9.8	0.00
Sysmex XN-L Series (330/350/450/550)	214	0.385	5.5	0.00
Nihon Kohden Celltac Alpha/plus	216	0.341	10.9	0.00
Sysmex XP Series	144	0.404	5.8	0.00
Mindray BC 5000/5150/5140/5130/5120	115	0.414	6.3	0.00
Sysmex XS series	115	0.397	6.6	0.00
Mindray BC 5100/5180/5300/5380/5390	98	0.383	7.2	0.00
Mindray BC 10/20/30	71	0.399	5.1	0.00
Beckman Coulter DxH 600/800/900 Series	76	0.356	3.4	0.00
Siemens/Bayer Advia 120/2120	71	0.410	7.3	0.00
Sysmex XT series	65	0.383	4.6	0.00
ABX Micros/Minos/ABC VET	61	0.338	9.7	0.01
Abbott Cell-Dyn Ruby	61	0.152	9.8	0.00
Boule Medonic/ Swelab 3-part diff	57	0.357	8.3	0.00
Horiba Yumizen H500/ 550	53	0.419	6.8	0.00
Nihon Kohden Celltac E/Es	55	0.323	8.1	0.00
Erba Lachema Elite series	54	0.406	9.1	0.01
Nihon Kohden Celltac G	43	0.436	7.7	0.01
Human Humacount Series	38	0.363	12.4	0.01

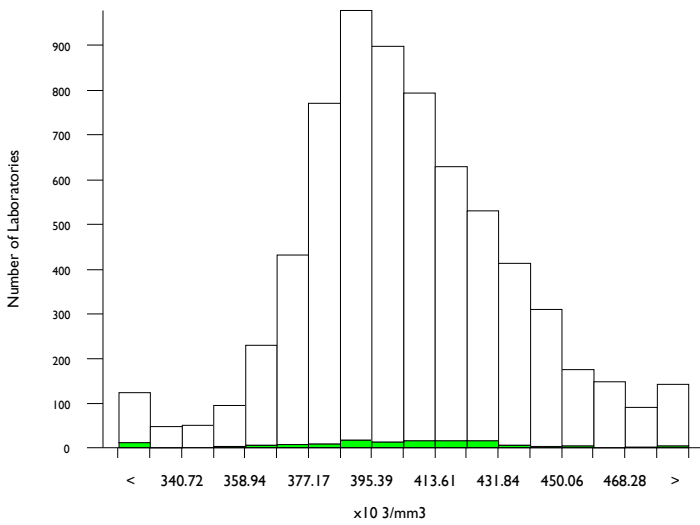


Platelets (Impedance Count), x10³/mm³

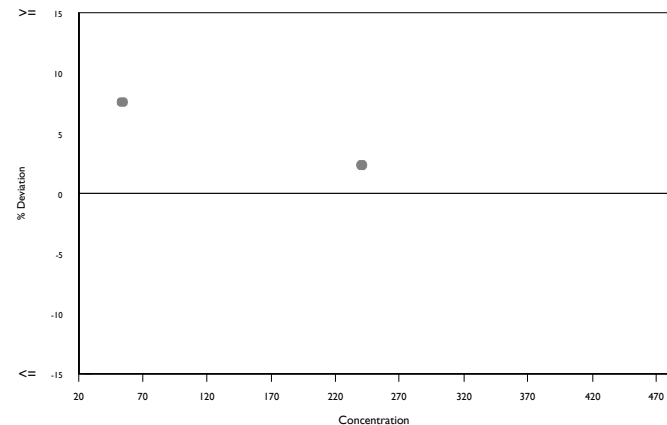
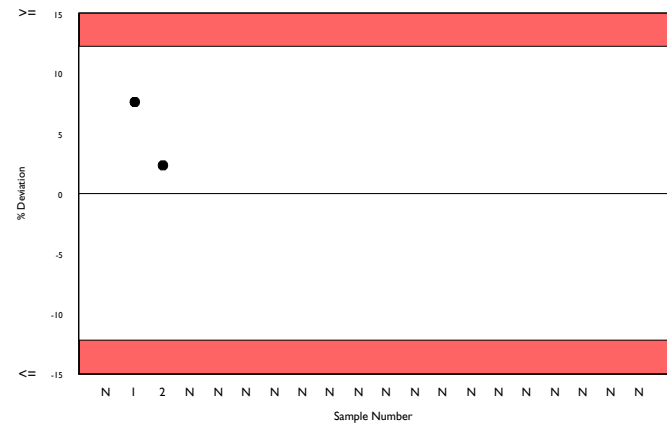
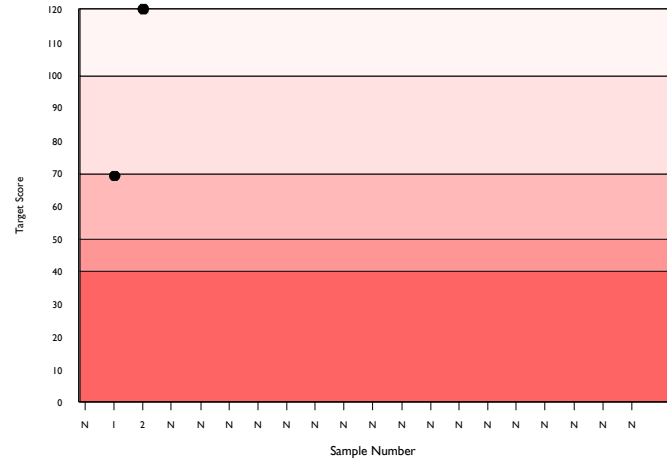
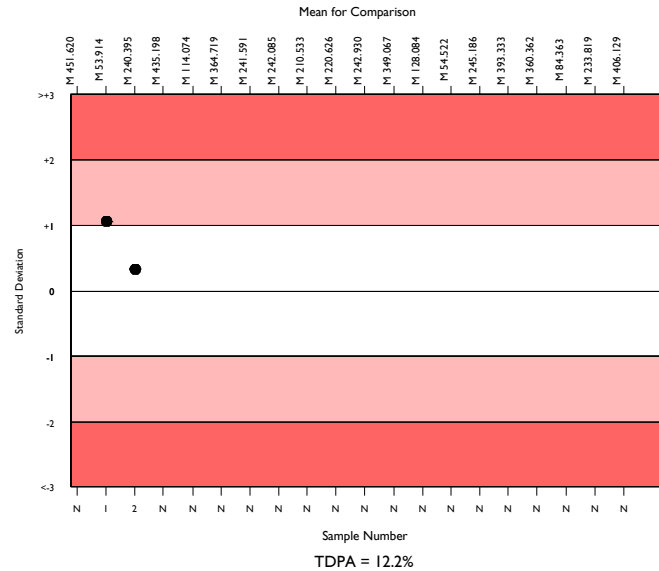
	N	Mean	CV%	U _m	SDPA	Exc.
All Methods	6353	404.506	6.0	0.38	30.00	502
ABX Micros/Minos/ABC VET	122	406.129	6.6	3.01	30.12	17

▲ Your Result	No Result	SDI RMSDI	Too Few
■ Mean for Comparison	406.129	TS RMTS	Too Few
		%DEV RM%DEV	Too Few

Acceptable limits derived from Biological Variation	N/A
Acceptable limits of performance for RIQAS	12.20%



Method	N	Mean	CV%	U _m
Sysmex XN Series	1590	387.245	3.0	0.36
Sysmex XN-L Series (330/350/450/550)	611	391.338	3.4	0.68
Mindray BC-6000/6200/6600/6800/6800Plus	339	418.225	3.6	1.03
Sysmex XP Series	323	434.877	4.8	1.46
Beckman Coulter DxH 600/800/900 Series	321	408.168	2.8	0.79
Mindray BC 1000/2000/3000 series	293	415.084	5.5	1.67
Nihon Kohden Celltac Alpha/plus	270	405.619	6.9	2.12
Sysmex XS series	208	407.920	4.6	1.63
Mindray BC 5100/5180/5300/5380/5390	163	424.806	4.2	1.75
Mindray BC 5000/5150/5140/5130/5120	136	413.772	4.9	2.16
ABX Micros/Minos/ABC VET	122	406.129	6.6	3.01
Mindray BC 10/20/30	116	411.026	4.3	2.07
Sysmex XT series	109	399.509	3.9	1.86
Beckman Coulter DxH 500 Series	104	437.268	5.3	2.82
Sysmex KX 21	97	425.008	5.5	2.96
Horiba Yumizen H500/ 550	94	411.954	5.3	2.80
Boule Medonic/ Swelab 3-part diff	95	401.052	6.2	3.20
Horiba ABX Pentra 60/80/XLR	91	406.727	4.0	2.15
Nihon Kohden Celltac E/Es	83	424.867	5.3	3.09
Erba Lachema Elite series	78	430.358	7.4	4.48
Abbott Cell-Dyn Emerald 22	71	426.930	5.3	3.37

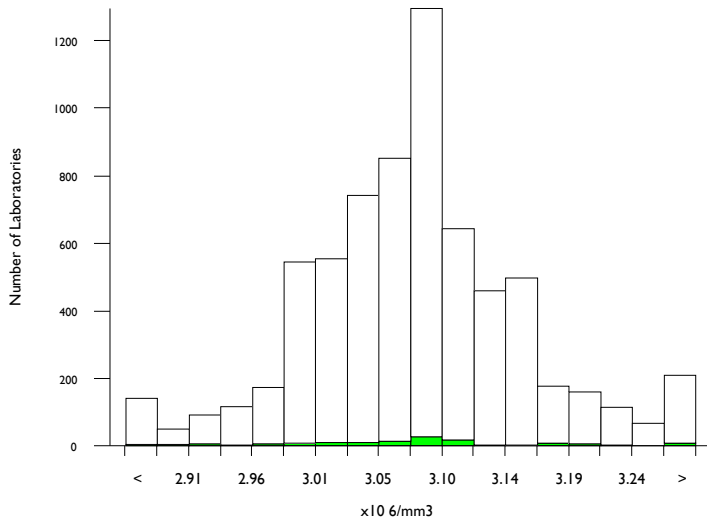


RBC (Impedance Count), x10⁶/mm³

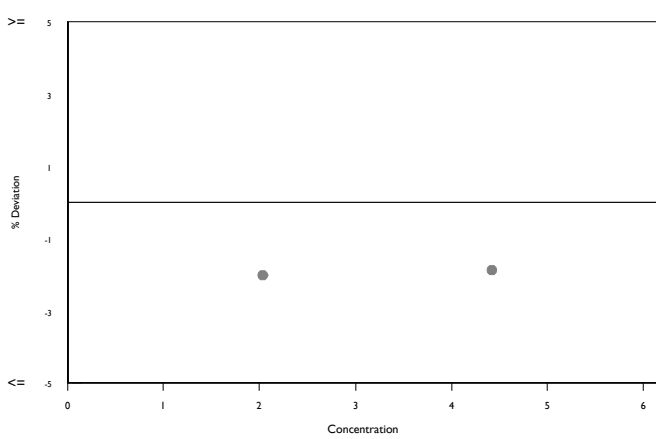
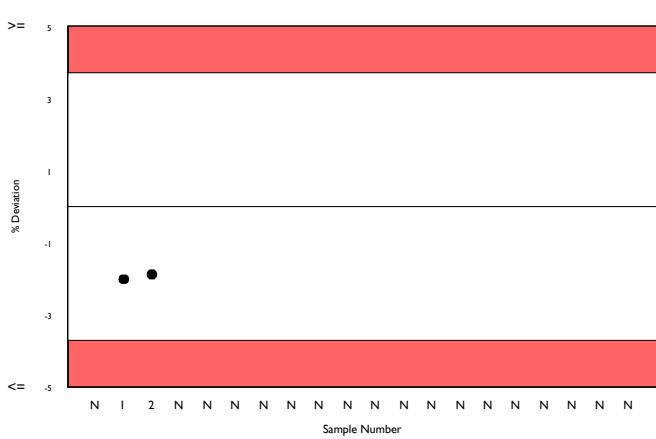
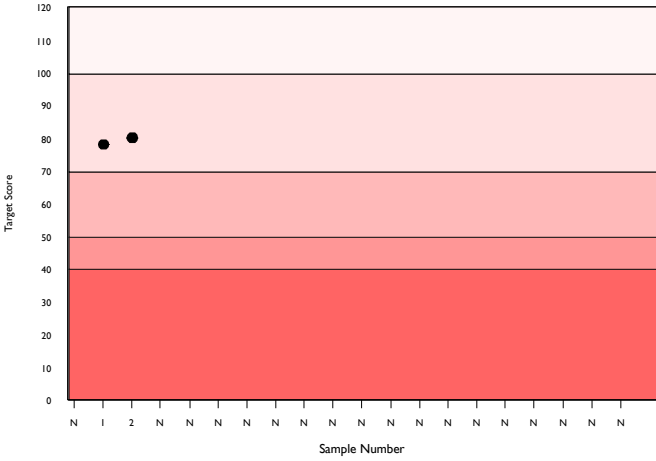
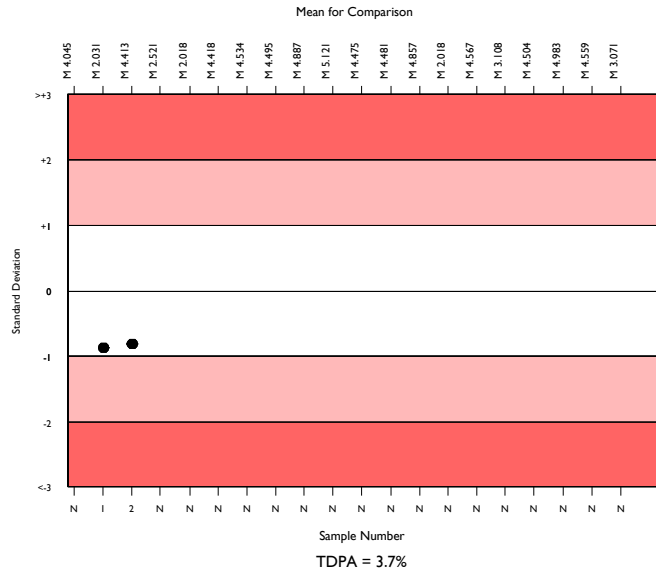
	N	Mean	CV%	U _m	SDPA	Exc.
All Methods	6410	3.080	2.0	0.00	0.07	469
ABX Micros/Minos/ABC VET	131	3.071	2.6	0.01	0.07	12

▲ Your Result	No Result	SDI	Too Few
		RMSDI	Too Few
■ Mean for Comparison	3.071	TS	Too Few
		RMTS	Too Few
		%DEV	Too Few
		RM%DEV	Too Few

Acceptable limits derived from Biological Variation	N/A
Acceptable limits of performance for RIQAS	3.70%



Method	N	Mean	CV%	U _m
Sysmex XN Series	1611	3.074	1.3	0.00
Sysmex XN-L Series (330/350/450/550)	640	3.032	1.3	0.00
Mindray BC-6000/6200/6600/6800/6800Plus	341	3.109	1.4	0.00
Sysmex XP Series	317	3.086	1.4	0.00
Beckman Coulter DxH 600/800/900 Series	330	3.083	1.4	0.00
Mindray BC 1000/2000/3000 series	298	3.138	2.7	0.01
Nihon Kohden Celltac Alpha/plus	272	3.146	2.3	0.01
Sysmex XS series	202	3.057	1.6	0.00
Mindray BC 5100/5180/5300/5380/5390	166	3.083	1.8	0.01
Mindray BC 5000/5150/5140/5130/5120	145	3.040	2.3	0.01
ABX Micros/Minos/ABC VET	131	3.071	2.6	0.01
Mindray BC 10/20/30	121	3.038	2.3	0.01
Sysmex XT series	106	3.117	1.1	0.00
Beckman Coulter DxH 500 Series	103	3.073	2.1	0.01
Sysmex KX 21	94	3.074	1.4	0.01
Horiba Yumizen H500/ 550	93	3.085	2.0	0.01
Horiba ABX Pentra 60/80/XLR	86	3.064	1.3	0.01
Boule Medonic/ Swelab 3-part diff	86	3.057	1.7	0.01
Nihon Kohden Celltac E/Es	85	3.144	1.9	0.01
Erba Lachema Elite series	76	3.114	2.5	0.01
Abbott Cell-Dyn Emerald 22	74	3.044	2.5	0.01

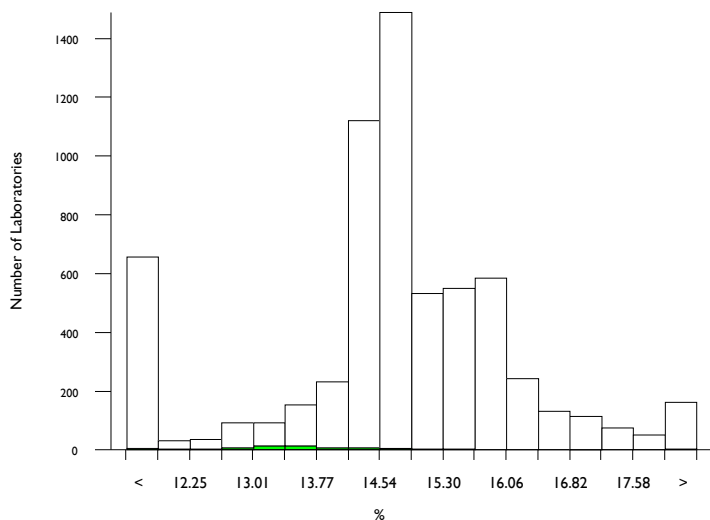


Red Cell Dist. Width CV, %

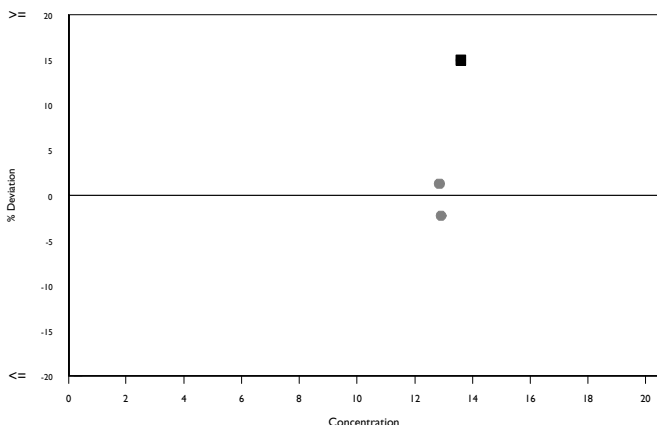
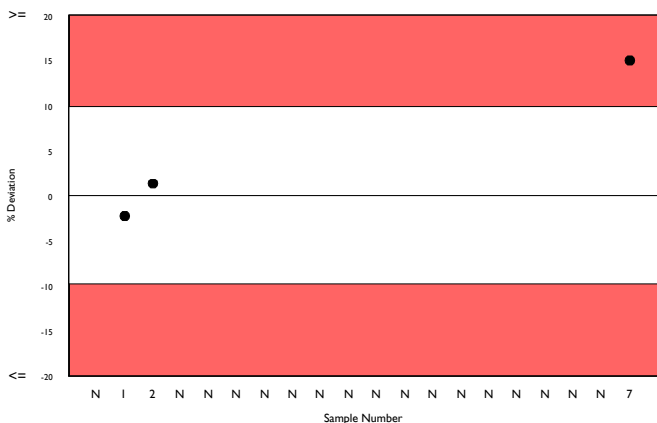
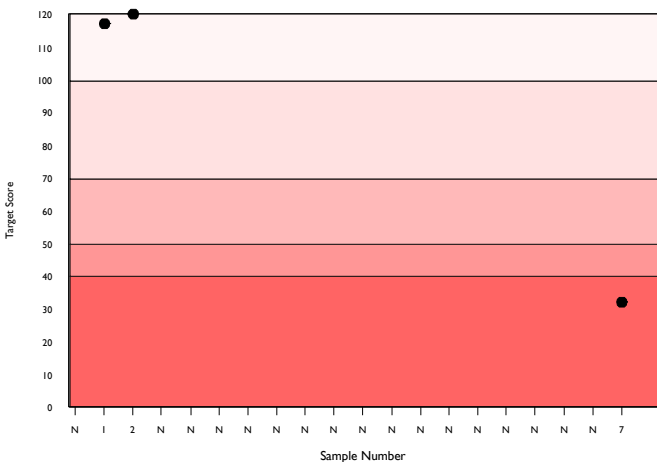
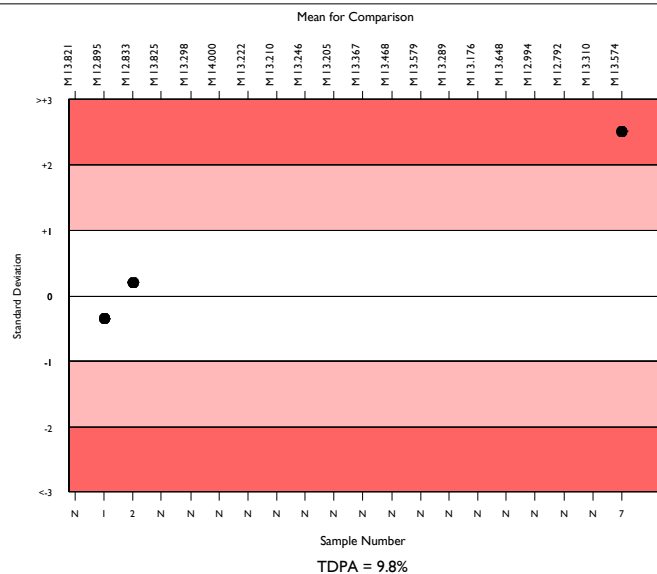
	N	Mean	CV%	U _m	SDPA	Exc.
All Methods	5588	14.922	6.8	0.02	0.89	749
ABX Micros/Minos/ABC VET	60	13.574	5.3	0.12	0.81	9

▲ Your Result	15.600	SDI	2.51
		RMSDI	Too Few
■ Mean for Comparison	13.574	TS	32
		RMTS	Too Few
		%DEV	14.9
		RM%DEV	Too Few

Acceptable limits derived from Biological Variation	N/A
Acceptable limits of performance for RIQAS	9.80%
SDI in bottom 5% of peer group	
TS & %DEV outside limits	



Method	N	Mean	CV%	U _m
Sysmex XN Series	1409	14.603	1.3	0.01
Sysmex XN-L Series (330/350/450/550)	536	14.412	1.9	0.01
Mindray BC-6000/6200/6600/6800/6800Plus	327	15.511	1.5	0.02
Beckman Coulter DxH 600/800/900 Series	266	15.803	1.5	0.02
Sysmex XP Series	249	10.055	4.1	0.03
Abbott Cell-Dyn Ruby	246	10.095	4.6	0.04
Mindray BC 1000/2000/3000 series	238	15.093	4.2	0.05
Nihon Kohden Celltac Alpha/plus	224	15.565	5.4	0.07
Sysmex XS series	201	14.788	1.8	0.02
Siemens/Bayer Advia 120/2120	173	15.804	3.5	0.05
Mindray BC 5100/5180/5300/5380/5390	132	14.682	2.3	0.04
Mindray BC 5000/5150/5140/5130/5120	127	17.335	1.6	0.03
Mindray BC 10/20/30	103	14.799	2.3	0.04
Sysmex XT series	95	14.771	1.7	0.03
Beckman Coulter DxH 500 Series	95	13.147	2.6	0.04
Horiba Yumizen H500/ 550	87	14.194	6.1	0.12
Horiba ABX Pentra 60/80/XLR	74	14.768	5.0	0.11
Nihon Kohden Celltac E/Es	66	16.230	4.8	0.12
Boule Medonic/ Swelab 3-part diff	62	13.233	7.2	0.15
ABX Micros/Minos/ABC VET	60	13.574	5.3	0.12
Erba Lachema Elite series	62	15.086	7.7	0.18

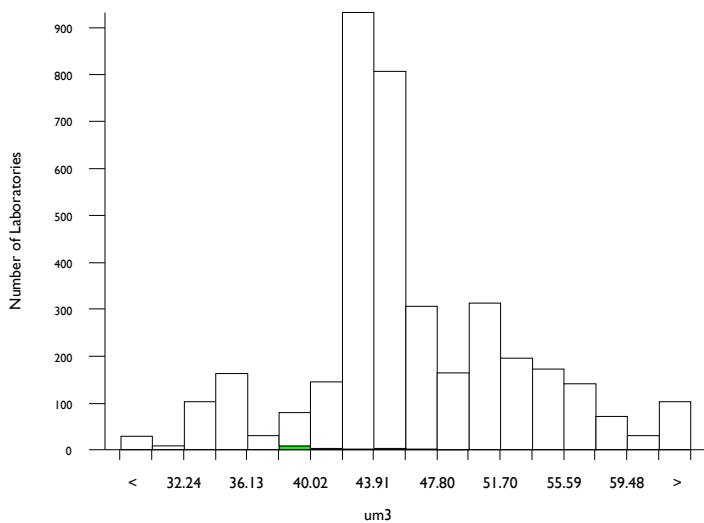


Red Cell Dist. Width SD, um³

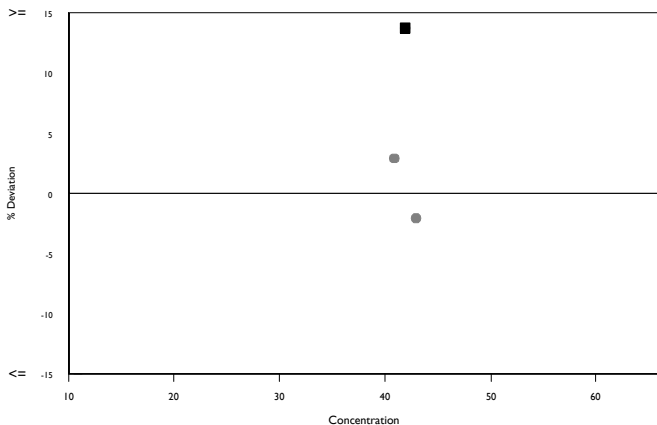
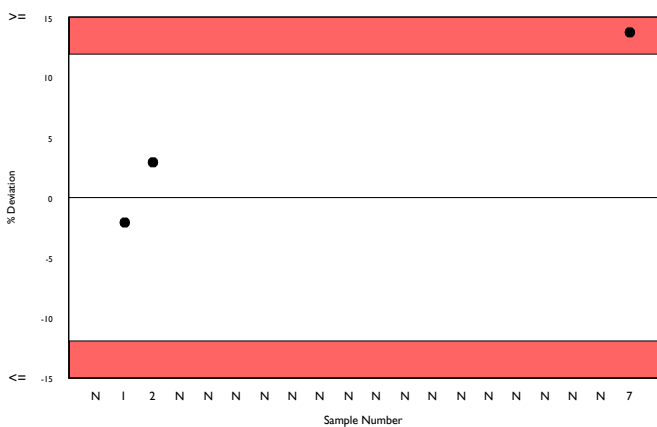
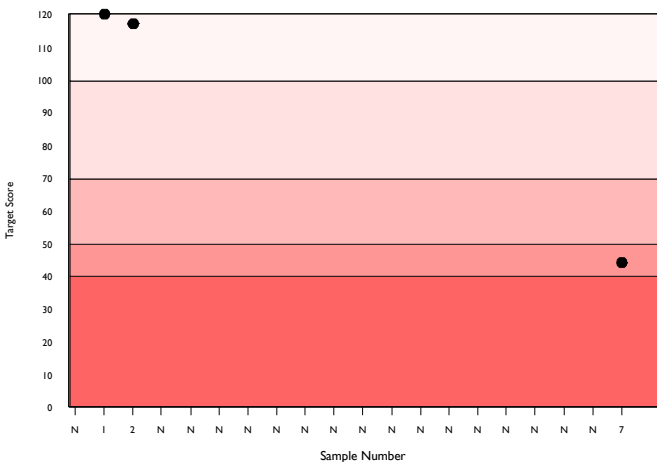
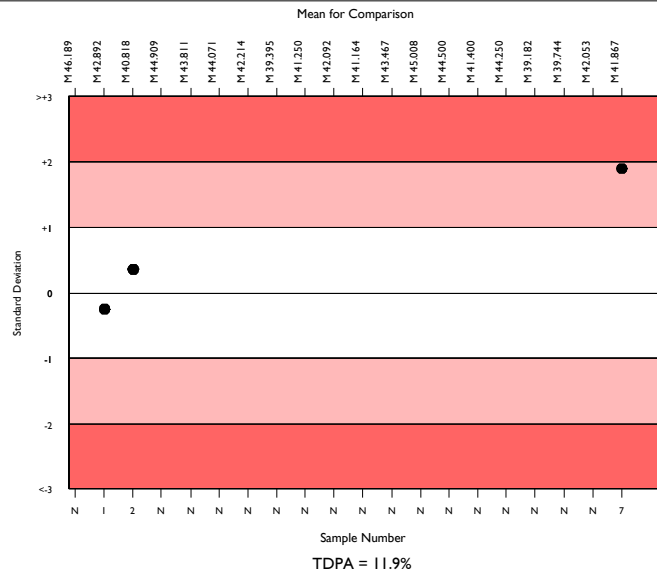
	N	Mean	CV%	U _m	SDPA	Exc.
All Methods	3510	45.864	11.3	0.11	3.32	282
ABX Micros.Minos/ABC VET	18	41.867	6.1	0.75	3.03	1

▲ Your Result	47.600	SDI	1.89
		RMSDI	Too Few
■ Mean for Comparison	41.867	TS	44
		RMTS	Too Few
		%DEV	13.7
		RM%DEV	Too Few

Acceptable limits derived from Biological Variation	N/A
Acceptable limits of performance for RIQAS	11.90%
TS & %DEV outside limits	



Method	N	Mean	CV%	U _m
Sysmex XN Series	991	43.697	2.4	0.04
Sysmex XN-L Series (330/350/450/550)	270	43.926	2.0	0.07
Mindray BC-6000/6200/6600/6800/6800Plus	241	52.288	3.6	0.15
Sysmex XP Series	209	34.248	2.6	0.08
Mindray BC 1000/2000/3000 series	218	42.943	6.3	0.23
Beckman Coulter DxH 600/800/900 Series	178	51.031	1.5	0.07
Sysmex XS series	128	43.768	2.3	0.11
Nihon Kohden Celltac Alpha/plus	112	54.418	5.8	0.37
Mindray BC 5000/5150/5140/5130/5120	93	57.285	1.7	0.13
Mindray BC 10/20/30	79	45.839	2.7	0.17
Mindray BC 5100/5180/5300/5380/5390	84	52.345	6.9	0.49
Sysmex XT series	59	43.529	1.9	0.13
Horiba Yumizen H500/ 550	56	45.857	5.5	0.42
Beckman Coulter DxH 500 Series	51	45.859	3.0	0.24
Sysmex KX 21	48	34.927	3.9	0.24
Boule Medonic/ Swelab 3-part diff	49	52.962	15.1	1.43
Erba Lachema Elite series	46	50.206	7.1	0.66
Nihon Kohden Celltac E/Es	44	59.082	5.6	0.63
Mindray BC 5600/5800	34	46.959	4.4	0.44
Human Humacount Series	30	49.937	10.7	1.22
Nihon Kohden Celltac G	26	64.215	4.8	0.75

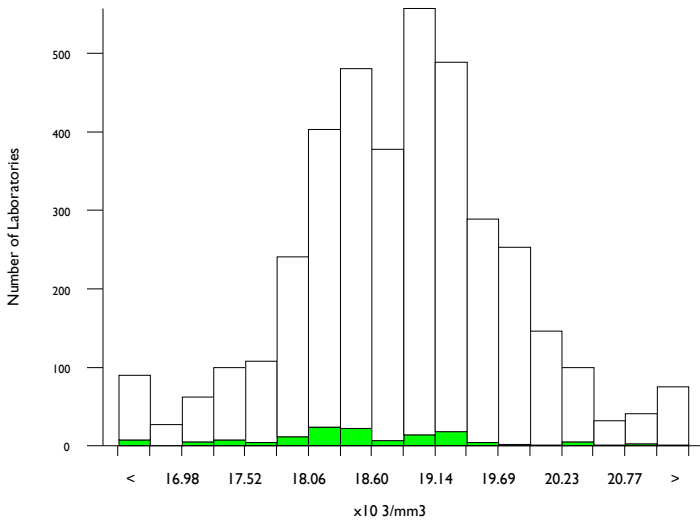


WBC (Impedance Count), x10³/mm³

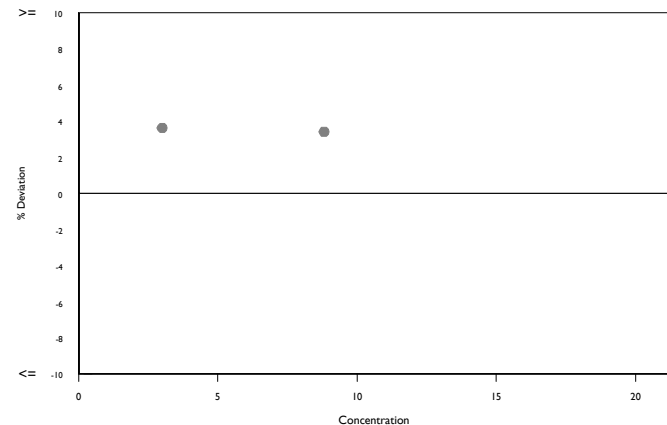
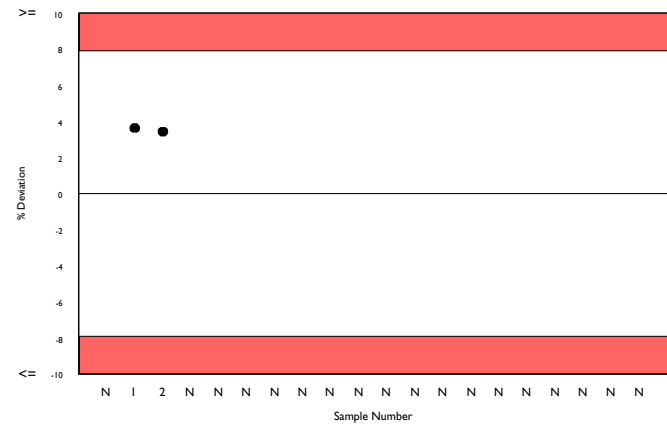
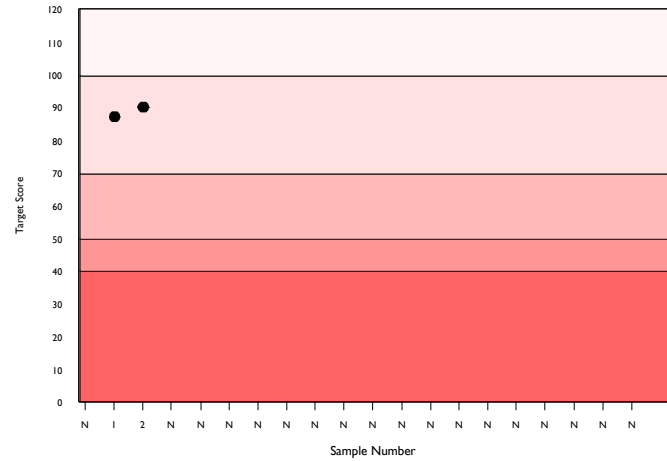
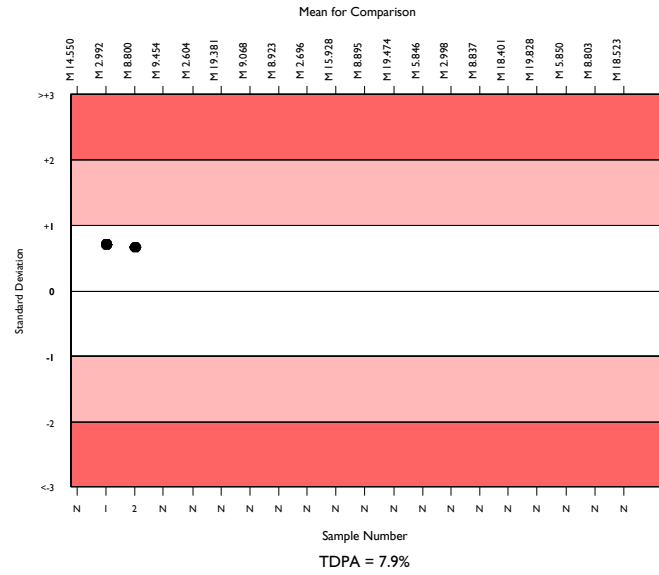
	N	Mean	CV%	U _m	SDPA	Exc.
All Methods	3588	18.878	3.8	0.02	0.91	285
ABX Micros/Minos/ABC VET	124	18.523	3.8	0.08	0.89	15

▲ Your Result	No Result	SDI	RMMSDI	Too Few
▲ Mean for Comparison	18.523	TS	RMMS	Too Few
		%DEV	RM%DEV	Too Few

Acceptable limits derived from Biological Variation	N/A
Acceptable limits of performance for RIQAS	7.90%



Method	N	Mean	CV%	U _m
Sysmex XN-L Series (330/350/450/550)	346	19.132	1.9	0.02
Sysmex XP Series	334	18.254	3.0	0.04
Beckman Coulter DxH 600/800/900 Series	313	19.523	2.3	0.03
Mindray BC 1000/2000/3000 series	303	18.787	2.9	0.04
Nihon Kohden Celltac Alpha/plus	267	18.622	2.6	0.04
Mindray BC 5100/5180/5300/5380/5390	192	19.452	2.9	0.05
ABX Micros/Minos/ABC VET	124	18.523	3.8	0.08
Mindray BC 10/20/30	121	19.401	3.0	0.07
Beckman Coulter DxH 500 Series	94	18.944	2.9	0.07
Sysmex KX 21	92	18.448	2.7	0.06
Boule Medonic/ Swelab 3-part diff	90	19.336	3.2	0.08
Horiba Yumizen H500/ 550	88	18.194	3.0	0.07
Horiba ABX Pentra 60/80/XLR	81	18.838	2.5	0.07
Nihon Kohden Celltac E/Es	82	18.504	2.1	0.05
Erba Lachema Elite series	73	19.022	2.8	0.08
Abbott Cell-Dyn Emerald 22	71	18.423	2.6	0.07
Nihon Kohden Celltac G	60	18.990	1.7	0.05
Human Humacount Series	48	18.338	4.9	0.16
Abbott Cell-Dyn Emerald 18	35	18.117	4.2	0.16
Orphee Mythic 18	31	17.919	2.6	0.11
Orphee Mythic 22	32	18.578	3.8	0.16



Analyte	Mean for Comparison	Your Result	SDI	RMSDI	%DEV	RM%DEV	TS	RMTS	Performance
Haemoglobin	9.093	9.000	-0.40	Too Few	-1.0	Too Few	111	Too Few	
Haematocrit (HCT)	25.975	24.000	-1.86	Too Few	-7.6	Too Few	52	Too Few	
MCH	29.566	30.800	1.02	Too Few	4.2	Too Few	78	Too Few	
MCHC	34.813	37.500	1.59	Too Few	7.7	Too Few	52	Too Few	
MCV	84.319	82.100	-0.64	Too Few	-2.6	Too Few	98	Too Few	
Mean Platelet Volume	8.504	10.400	<u>3.60</u>	Too Few	<u>22.3</u>	Too Few	<u>16</u>	Too Few	▲
Plateletcrit	0.338	0.461	<u>2.93</u>	Too Few	<u>36.2</u>	Too Few	<u>25</u>	Too Few	▲
Platelets (Impedance Count)	406.129	No Result		Too Few		Too Few		Too Few	
RBC (Impedance Count)	3.071	No Result		Too Few		Too Few		Too Few	
Red Cell Dist. Width CV	13.574	15.600	<u>2.51</u>	Too Few	<u>14.9</u>	Too Few	<u>32</u>	Too Few	▲
Red Cell Dist. Width SD	41.867	47.600	1.89	Too Few	<u>13.7</u>	Too Few	<u>44</u>	Too Few	
WBC (Impedance Count)	18.523	No Result		Too Few		Too Few		Too Few	

ORMSDI N/A

ORM%DEV N/A

ORMTS N/A

END OF REPORT