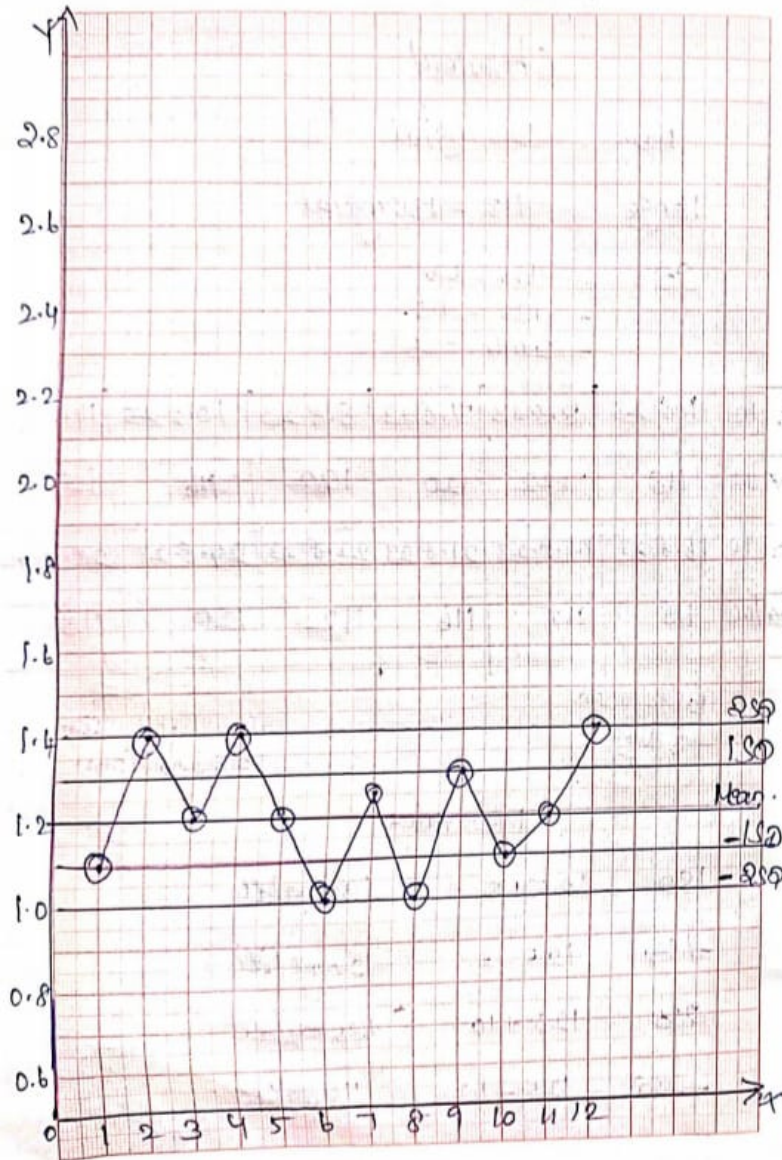


# Creatinine



August month - 2023

# Creatinine

Page No: 29  
Date: 29/8/23

Mean - 1.25 mg/dL

Range - 1.0 to 1.5 mg/dL

SD - HV - LV  
- 1.5 - 1.0  
- 0.5 / 4 = 0.1

Date	1.8.23	3.8.23	7.8.23	8.8.23	10.8.23	14.8.23
Value	1.1	1.4	1.2	1.4	1.2	1.0
Date	16.8.23	17.8.23	21.8.23	22.8.23	24.8.23	28.8.23
Value	1.3	1.0	1.3	1.1	1.2	1.4

Lab Technician  
S. Nagar

MEDICAL OFFICER  
GOVT. PRIMARY HEALTH CENTRE  
ERIYUR  
Sivagangal (Dist)

Mean value

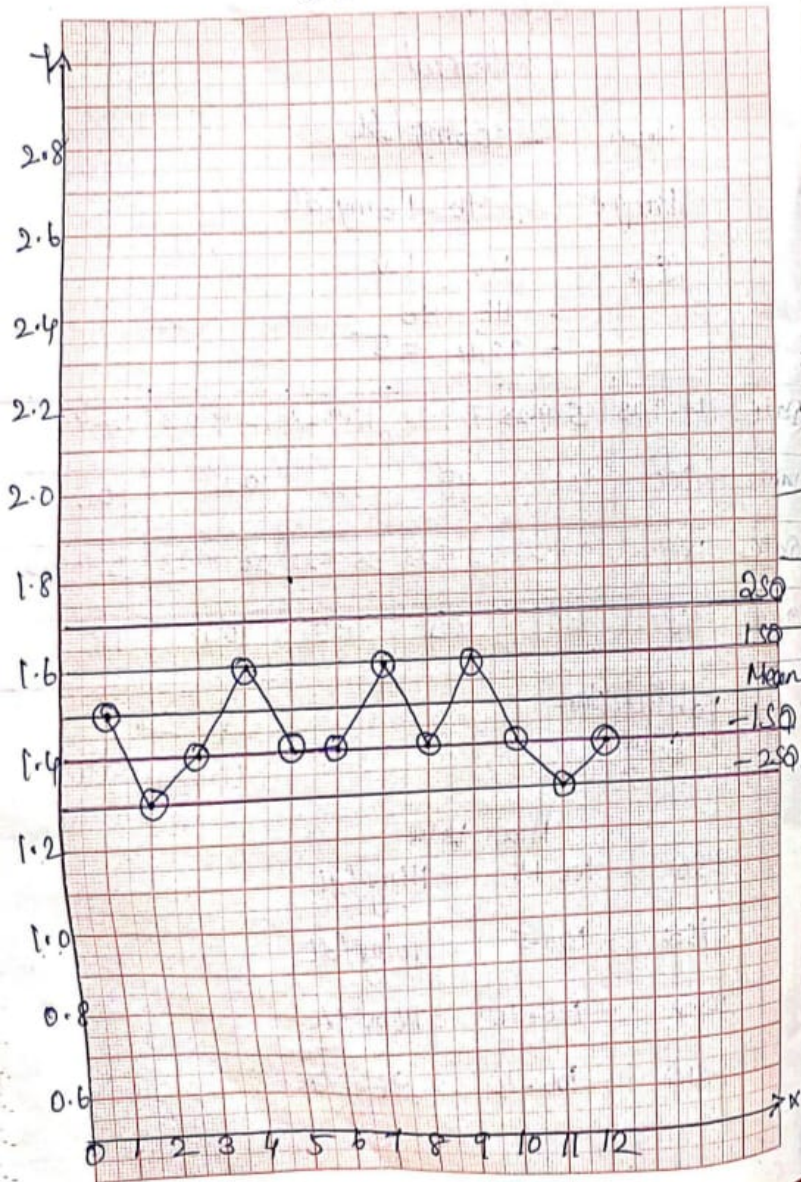
$$1SD - 1.2 + 0.1 = 1.3 \text{ mg/dL}$$

$$-1SD - 1.2 - 0.1 = 1.1 \text{ mg/dL}$$

$$2SD - 1.2 + 0.2 = 1.4 \text{ mg/dL}$$

$$-2SD - 1.2 - 0.2 = 1.0 \text{ mg/dL}$$

# Creatinine



September-2023

# Creatinine

Page No :   
 Date : 20

Mean - 1.5 mg/dl

Range - 1.3 to 1.8 mg/dl.

SD - HV - LV  
 $= \frac{1.8 - 1.3}{4} = 0.1$

Date	4.9.23	5.9.23	7.9.23	11.9.23	12.9.23	14.9.23
Value	1.5	1.3	1.4	1.6	1.4	1.4
Date	18.9.23	19.9.23	21.9.23	25.9.23	26.9.23	28.9.23
Value	1.6	1.4	1.6	1.4	1.3	1.4

Lab Technician  
 S. Deepa

MEDICAL CLERK  
 J.V.T. PRIMARY HEALTH CENTRE  
 ERIYUR  
 Sivagangai (Dist)

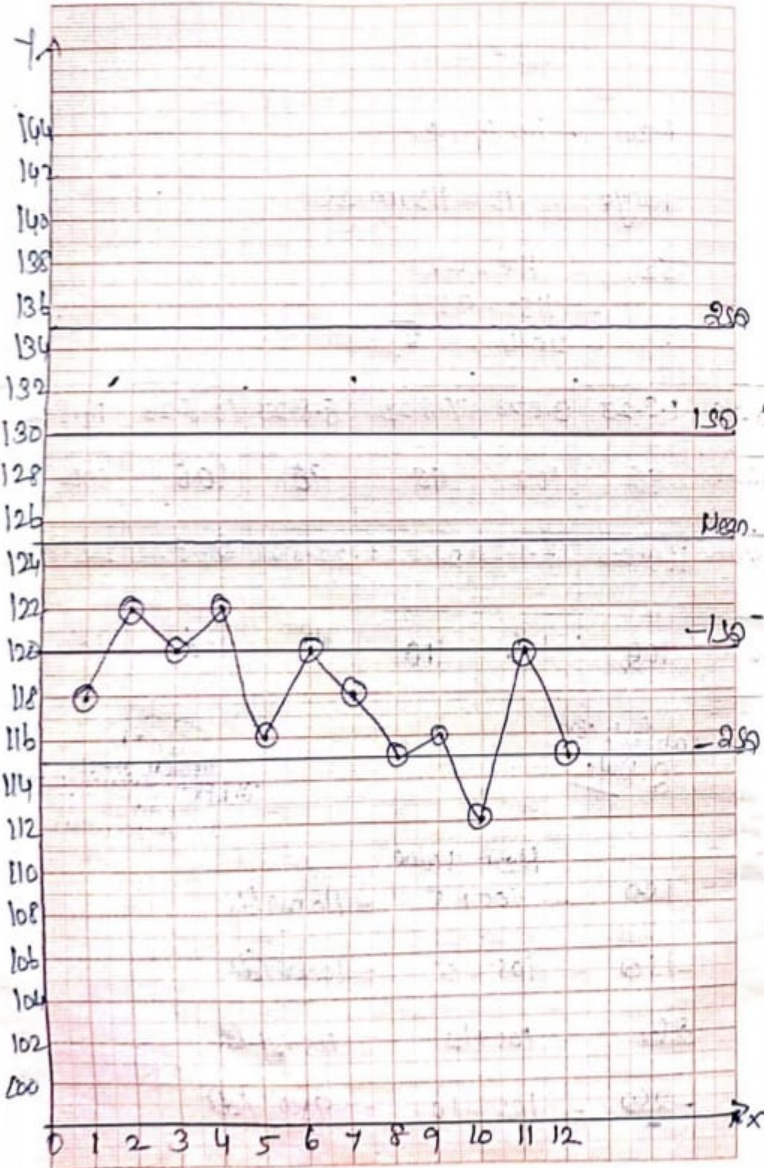
Mean Value

$$-1SD - 1.5 - 0.1 = 1.4 \text{ mg/dl}$$

$$2SD - 1.5 + 0.2 = 1.7 \text{ mg/dl}$$

$$-2SD - 1.5 - 0.2 = 1.3 \text{ mg/dl}$$

# Cholesterol.



August month - 2023.

# Cholesterol.

Mean - 125 mg/dl

Range - 115 - 135 mg/dl

SD - HV - LV  
- 135 - 115  
= 20/4 = 5

Date	1.8.23	3.8.23	7.8.23	8.8.23	10.8.23	14.8.23
Value	118	122	120	122	116	120
Date	16.8.23	17.8.23	21.8.23	22.8.23	24.8.23	28.8.23
Value	118	115	116	112	120	115

Lab technician  
S. Nij...

PRIMARY HEALTH CENTRE  
ERIYUR  
Sivagangai (Dist)

Mean value

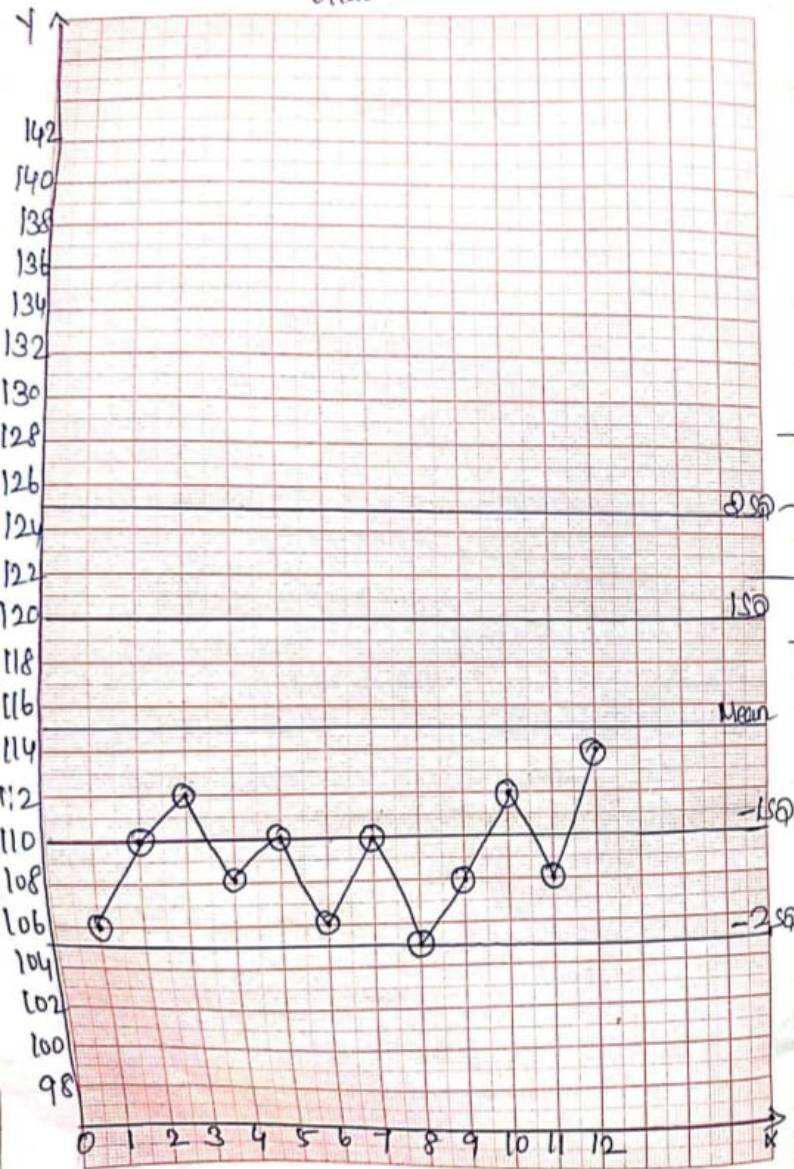
+1SD - 125 + 5 = 130 mg/dl

-1SD - 125 - 5 = 120 mg/dl

+2SD - 125 + 10 = 135 mg/dl

-2SD - 125 - 10 = 115 mg/dl

# Glucose



September month - 2023

## Glucose

Page No:   
 Date: 20/9/23

Mean - 115 mg/dL

Range - 105 - 125 mg/dL

SD - HV - LV  
 - 125 - 105 = 20/4 = 5

Date	4.9.23	5.9.23	7.9.23	11.9.23	12.9.23	14.9.23
Value	106	110	112	108	110	106
Date	18.9.23	19.9.23	21.9.23	25.9.23	26.9.23	28.9.23
Value	110	105	108	112	108	114

Lab Technician

S. M. J.

MEDICAL OFFICER  
 GOVT. PRIMARY HEALTH CELL,  
 ERIVUR  
 Sivagangai (Dist)

Mean value

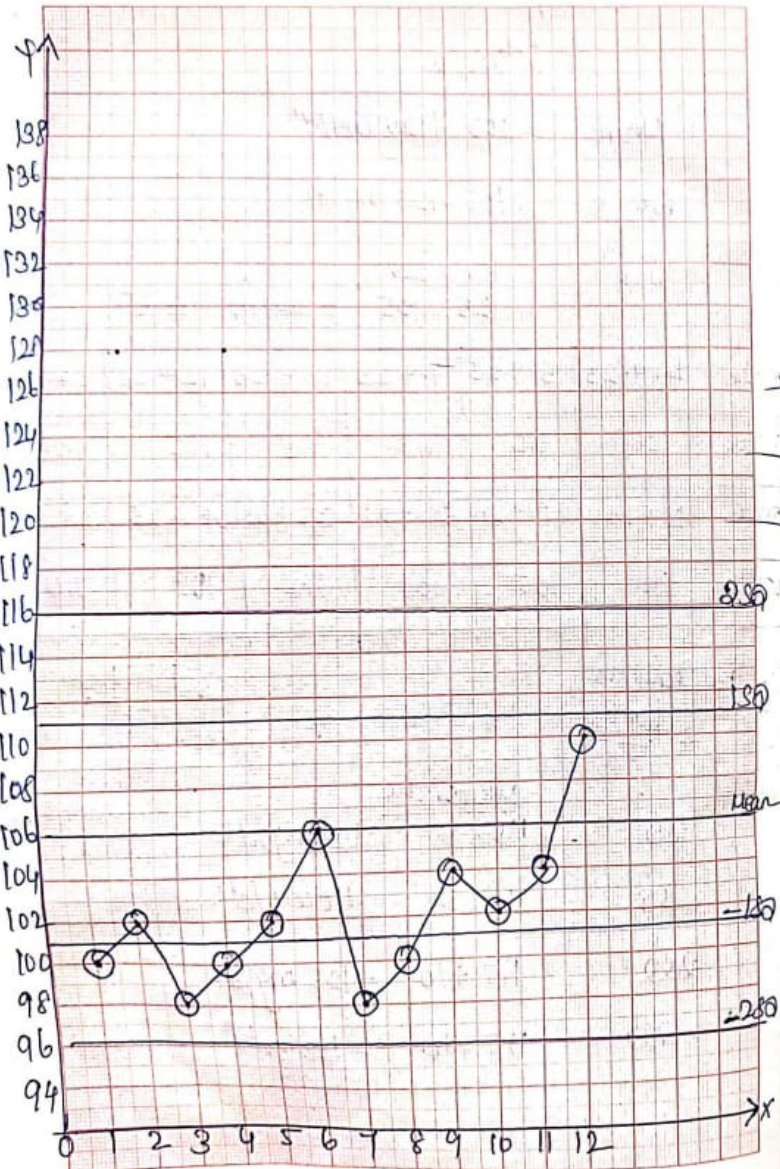
$$1SD - 115 + 5 = 120 \text{ mg/dL}$$

$$-1SD - 115 - 5 = 110 \text{ mg/dL}$$

$$2SD - 115 + 10 = 125 \text{ mg/dL}$$

$$-2SD - 115 - 10 = 105 \text{ mg/dL}$$

# cholesterol.



September - 2023

cholesterol.

Page No:   
 Date: 20/11

Mean - 106mg/dL

Range - 96 - 116 mg/dL

SD - HV - LV

- 116 - 96

- 20 / 4 = 5

Date	4.9.23	5.9.23	7.9.23	11.9.23	12.9.23	14.9.23
Value	100	102	98	100	102	106
Date	18.9.23	19.9.23	21.9.23	25.9.23	26.9.23	28.9.23
Value	98	100	104	102	104	110

Lab Technician

S. M. P.

MEDICAL OFFICER  
T. PRIMARY HEALTH CENT.  
ERIYUR  
Sivagangal (Dist)

Mean Value

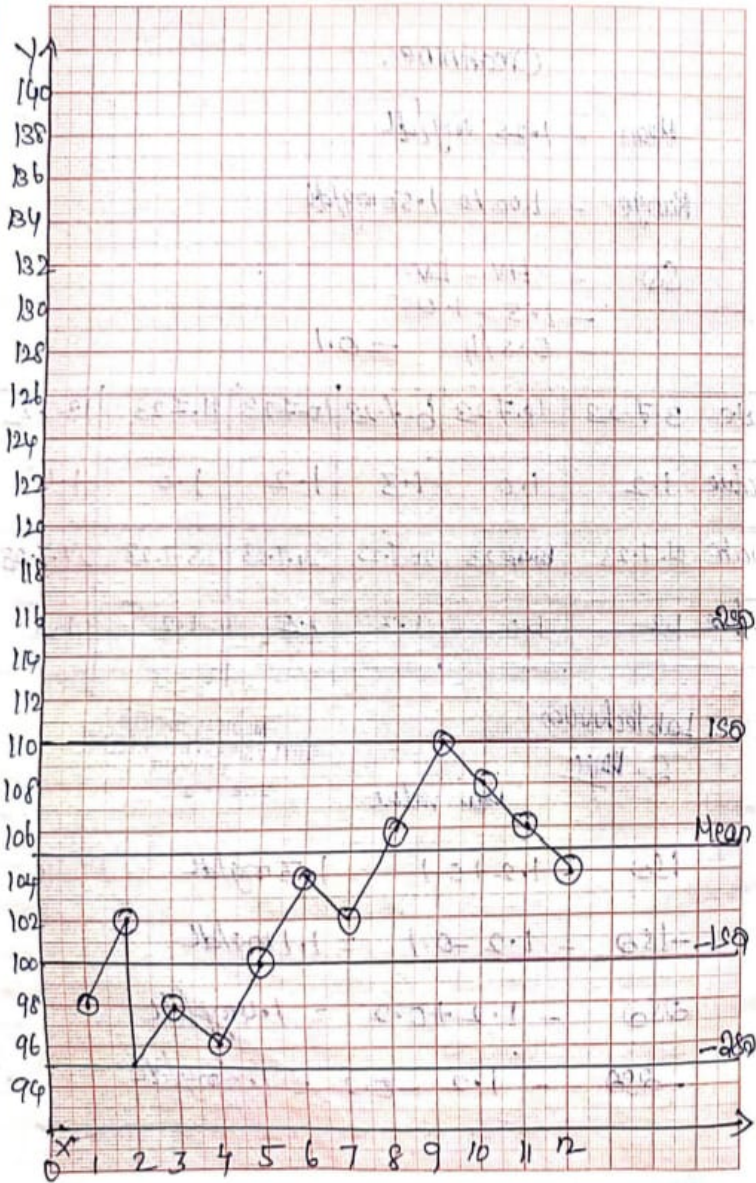
$$+1SD - 106 + 5 = 111 \text{ mg/dL}$$

$$-1SD - 106 - 5 = 101 \text{ mg/dL}$$

$$2SD - 106 + 10 = 116 \text{ mg/dL}$$

$$-2SD - 106 - 10 = 96 \text{ mg/dL}$$

Glucose (mg/dl)



August month - 2023

Glucose

Mean - 105 mg/dl

Range - 95 - 115 mg/dl

SD - HV - LV

- 115 - 95

- 20/4 = 5

Date	1.8.23	3.8.23	7.8.23	8.8.23	10.8.23	14.8.23
Value	98	102	98	96	100	104
Date	16.8.23	17.8.23	21.8.23	22.8.23	24.8.23	28.8.23
Value	108	106	100	108	106	104

Lab technician  
S. Nitya

MEDICAL OFFICER  
GOVT. PRIMARY HEALTH CENTRE  
ERIVUR  
Sivagangai (Dist)

Mean value

$$1SD - 105 + 5 = 110 \text{ mg/dl}$$

$$-1SD - 105 - 5 = 100 \text{ mg/dl}$$

$$2SD - 105 + 10 = 115 \text{ mg/dl}$$

$$-2SD - 105 - 10 = 95 \text{ mg/dl}$$