

Lab : 1034

Cycle No : 230310

Lab Name : KRSNAA DIAGNOSTICS LTD, BATALA

Sample No : 03

Report Date : 19/12/2023

Sample Date : 07/10/2023

Haematology - CBC, Erythrocyte (RBC) Count, mill/cu.mm

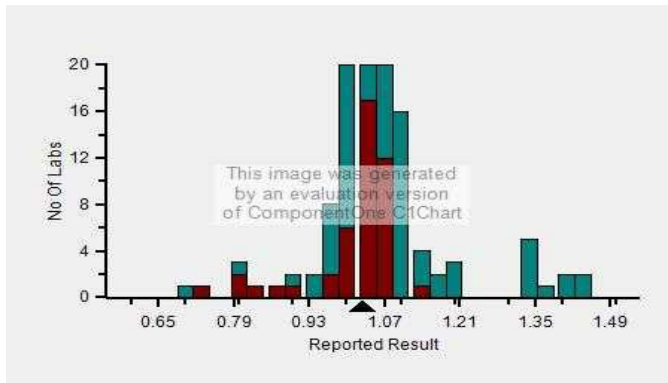
Comparative Statistics

	N	Mean	SD	CV%	Excluded
All Methods	170	1.07	0.14	13.35	7
Impedance - (Your Method)	164	1.07	0.14	13.27	6
Horiba Yumizen H550 - (Your Analyzer)	46	1.02	0.11	10.71	1

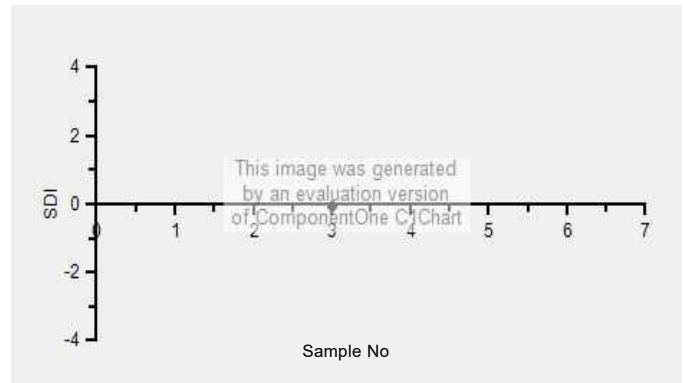
Evaluation Based On - Equipment wise Peer Grouping			
Your Result	1.03	SDI / z-Score	-0.05
Assigned Value	1.04	Average SDI	-0.03
SDPA	0.160	Uncertainty of AV	0.03
Standard Unit Result Val	1.03	%DEV	1.18

Note : # - Not evaluated / Bimodal distribution
X : SDI more than 4

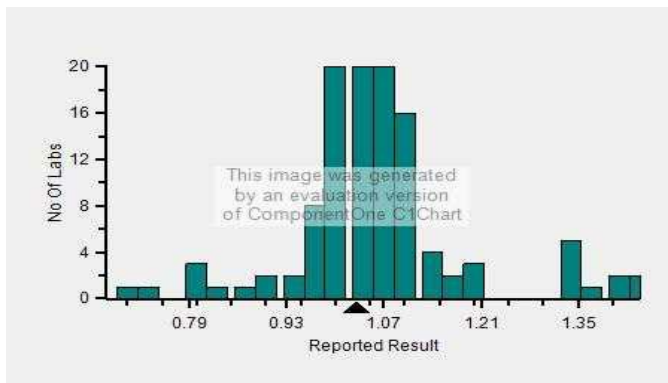
Frequency Histogram



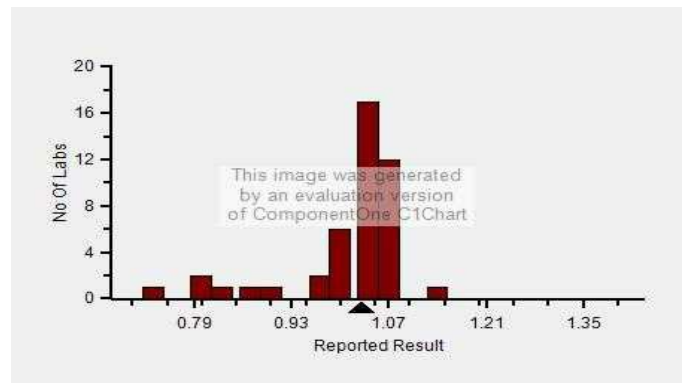
Z-Score Trend - Within Round



Frequency Histogram Your Method



Frequency Histogram Your Analyzer



Lab : 1034

Cycle No : 230310

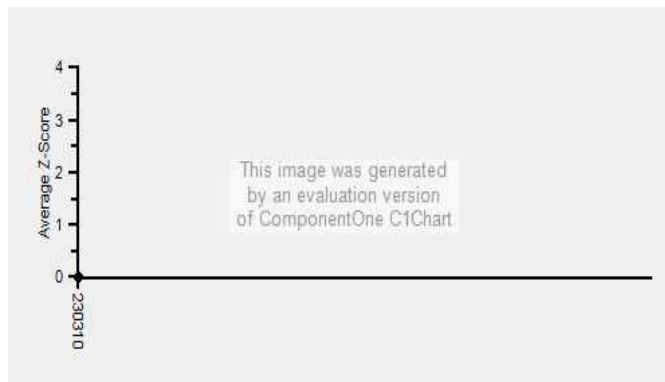
Lab Name : KRSNAA DIAGNOSTICS LTD, BATALA

Sample No : 03

Report Date : 19/12/2023

Sample Date : 07/10/2023

Frequency Histogram Your Method



Note : SDI with * marked are not considered for evaluation

Comments :

Haematology - CBC, Erythrocyte (RBC) Count		N	Mean	SD	CV%	Excluded
	All Analyzer	170	1.07	0.14	13.35	7
Your Analyzer :	Horiba Yumizen H550	46	1.02	0.11	10.71	1
	Horiba Yumizen H500	17	1.08	0.17	15.54	-
	Erba ELite 580	13	1.02	0.03	2.46	-
	Mindray BC-5000	12	1.04	0.04	3.35	-
	Horiba ABX Pentra XL 80	8	1.36	0.16	11.96	-
	Nihon Kohden Celltac Alpha	6	1.09	0.03	2.39	-
	Sysmex XP-100	5	1.21	0.23	18.62	-
	Beckman Coulter DxH 560	5	1.04	0.01	1.06	-

Remarks: Interpretation of your reports

- a) If your SDI lies between +/- 2.0 SDI then your results are well within limits.
- b) If your SDI lies between +/-2.0 to 2.99 SDI then it is a warning alert flag.
- c) If your SDI is +/- 3.0 SDI or more then it is an action alert flag.

Interpretation when an analyte is reported for multiple samples in a Round:

- a) Reported on 2 samples:
 - Two out of two pass - Acceptable performance
 - One out of two pass - Review for random error & take action if appropriate
 - Both failed - Unacceptable performance, Review for systematic error
- b) Reported on 3 samples:
 - All pass - Acceptable performance
 - Two out of three pass - Review for random error & take action if appropriate
 - One out of three pass - Unacceptable performance, Review for systematic error
 - All failed - Unacceptable performance, Review for systematic error



Lab : 1034

Cycle No : 230310

Lab Name : KRSNAA DIAGNOSTICS LTD, BATALA

Sample No : 03

Report Date : 19/12/2023

Sample Date : 07/10/2023

Haematology - CBC, Haemoglobin, %

Comparative Statistics

	N	Mean	SD	CV%	Excluded
All Methods	170	2.86	0.38	13.37	15
Non Cyanide method - (Your Method)	30	2.72	0.15	5.51	2
Horiba Yumizen H550 - (Your Analyzer)	46	2.68	0.07	2.53	2

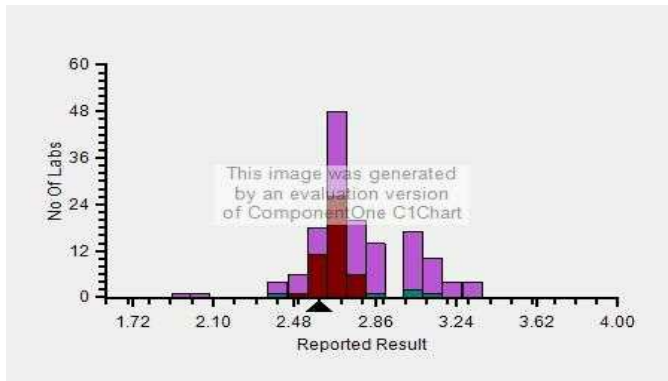
Evaluation Based On - Equipment wise Peer Grouping

Your Result	2.60	SDI / z-Score	-0.42
Assigned Value	2.70	Average SDI	-0.21
SDPA	0.240	Uncertainty of AV	0.04
Standard Unit Result Val	2.60	%DEV	-3.13

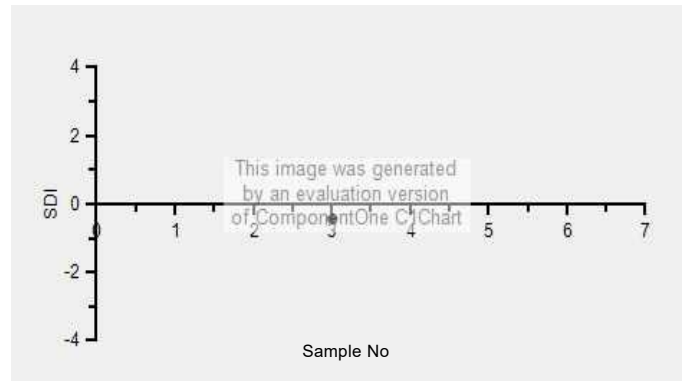
Note : # - Not evaluated / Bimodal distribution

X : SDI more than 4

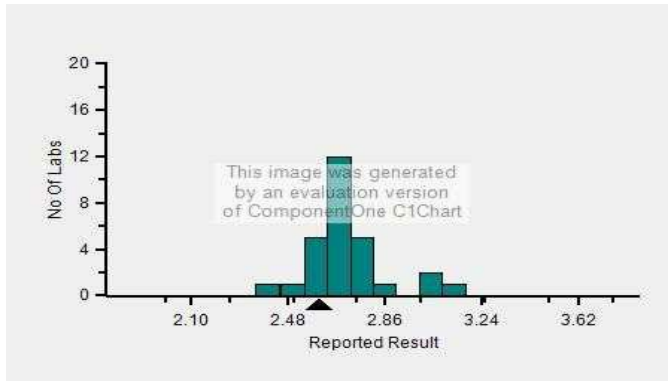
Frequency Histogram



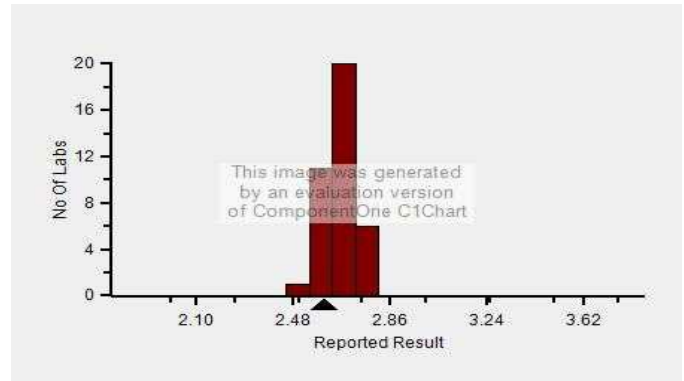
Z-Score Trend - Within Round



Frequency Histogram Your Method



Frequency Histogram Your Analyzer



Lab : 1034

Lab Name : KRSNAA DIAGNOSTICS LTD, BATALA

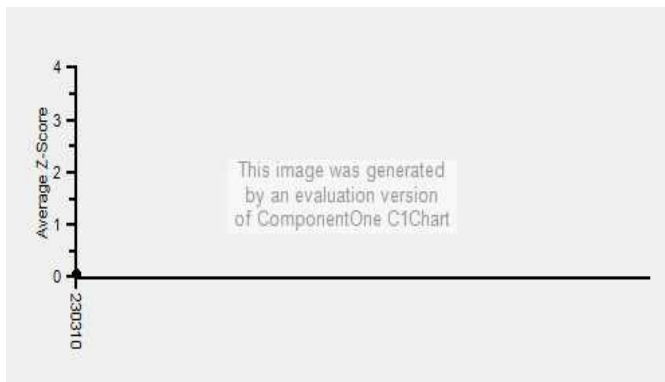
Report Date : 19/12/2023

Cycle No : 230310

Sample No : 03

Sample Date : 07/10/2023

Frequency Histogram Your Method



Note : SDI with * marked are not considered for evaluation

Comments :

Haematology - CBC, Haemoglobin

		N	Mean	SD	CV%	Excluded
	All Analyzer	170	2.86	0.38	13.37	15
Your Analyzer :	Horiba Yumizen H550	46	2.68	0.07	2.53	2
	Horiba Yumizen H500	17	2.71	0.06	2.36	2
	Erba ELite 580	13	2.70	0.06	2.15	-
	Horiba ABX Pentra XL 80	8	4.23	0.08	1.80	1
	Mindray BC 5000	8	3.11	0.06	2.06	-
	Nihon Kohden Celltac Alpha	6	2.90	0.30	10.49	-
	Sysmex XP-100	5	3.08	0.15	4.88	1
	Beckman Coulter DxH 560	5	2.47	0.06	2.59	-

Remarks: Interpretation of your reports

- a) If your SDI lies between +/- 2.0 SDI then your results are well within limits.
- b) If your SDI lies between +/-2.0 to 2.99 SDI then it is a warning alert flag.
- c) If your SDI is +/- 3.0 SDI or more then it is an action alert flag.

Interpretation when an analyte is reported for multiple samples in a Round:

a) Reported on 2 samples:

- Two out of two pass - Acceptable performance
- One out of two pass - Review for random error & take action if appropriate
- Both failed - Unacceptable performance, Review for systematic error

b) Reported on 3 samples:

- All pass - Acceptable performance
- Two out of three pass - Review for random error & take action if appropriate
- One out of three pass - Unacceptable performance, Review for systematic error
- All failed - Unacceptable performance, Review for systematic error



Lab : 1034

Cycle No : 230310

Lab Name : KRSNAA DIAGNOSTICS LTD, BATALA

Sample No : 03

Report Date : 19/12/2023

Sample Date : 07/10/2023

Haematology - CBC, Hematocrit, %

Comparative Statistics

	N	Mean	SD	CV%	Excluded
All Methods	163	13.35	1.61	12.05	9
Calculated - (Your Method)	101	13.11	1.58	12.03	5
Horiba Yumizen H550 - (Your Analyzer)	46	12.66	1.44	11.39	2

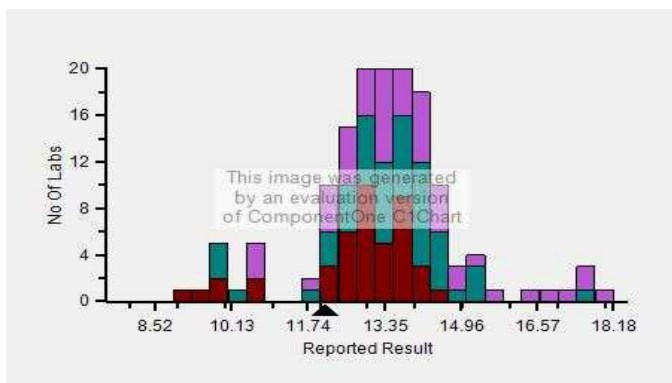
Evaluation Based On - Equipment wise Peer Grouping

Your Result	12.10	SDI / z-Score	-0.63
Assigned Value	13.14	Average SDI	-0.32
SDPA	1.650	Uncertainty of AV	0.28
Standard Unit Result Val	12.10	%DEV	-4.43

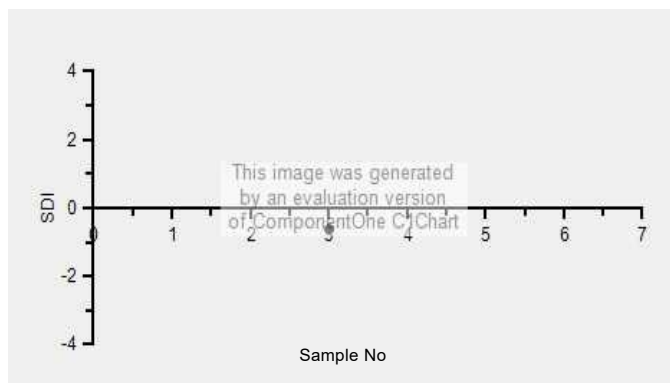
Note : # - Not evaluated / Bimodal distribution

X : SDI more than 4

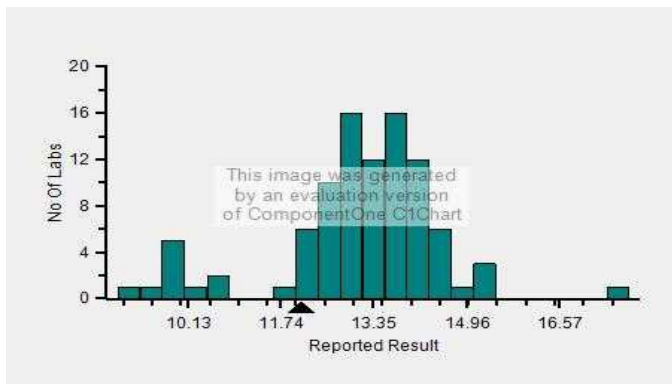
Frequency Histogram



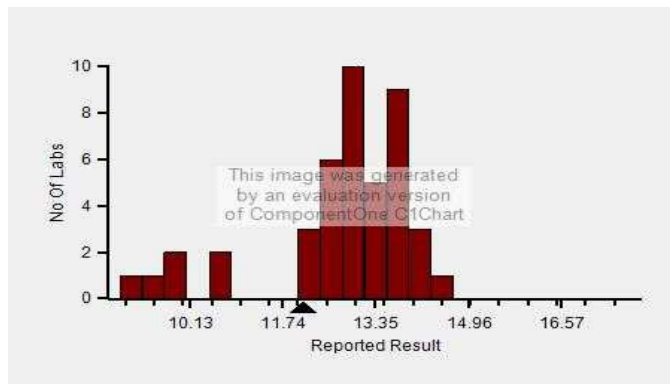
Z-Score Trend - Within Round



Frequency Histogram Your Method



Frequency Histogram Your Analyzer



Lab : 1034

Cycle No : 230310

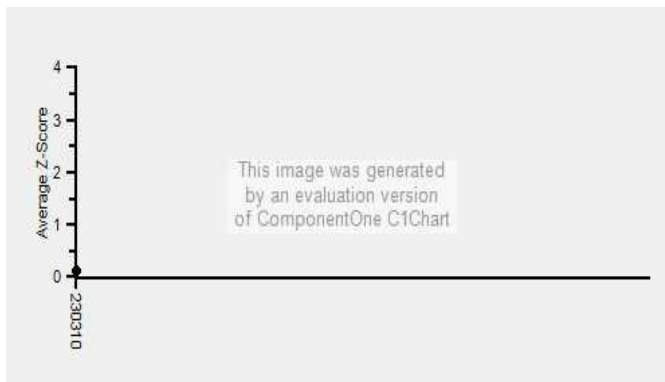
Lab Name : KRSNAA DIAGNOSTICS LTD, BATALA

Sample No : 03

Report Date : 19/12/2023

Sample Date : 07/10/2023

Frequency Histogram Your Method



Note : SDI with * marked are not considered for evaluation

Comments :

Haematology - CBC, Hematocrit		N	Mean	SD	CV%	Excluded
	All Analyzer	163	13.35	1.61	12.05	9
Your Analyzer :	Horiba Yumizen H550	46	12.66	1.44	11.39	2
	Horiba Yumizen H500	17	13.36	1.58	11.79	1
	Erba ELite 580	13	13.54	0.44	3.23	-
	Mindray BC-5000	12	13.98	1.38	9.86	-
	Horiba ABX Pentra XL 80	7	15.42	2.57	16.68	1
	Nihon Kohden Celltac Alpha	6	13.87	1.02	7.35	-
	Beckman Coulter DxH 560	5	13.30	0.27	1.99	-
	Horiba ABX Micros ES 60	5	12.18	0.41	3.38	1

Remarks: Interpretation of your reports

- If your SDI lies between +/- 2.0 SDI then your results are well within limits.
- If your SDI lies between +/-2.0 to 2.99 SDI then it is a warning alert flag.
- If your SDI is +/- 3.0 SDI or more then it is an action alert flag.

Interpretation when an analyte is reported for multiple samples in a Round:

a) Reported on 2 samples:

- Two out of two pass - Acceptable performance
- One out of two pass - Review for random error & take action if appropriate
- Both failed - Unacceptable performance, Review for systematic error

b) Reported on 3 samples:

- All pass - Acceptable performance
- Two out of three pass - Review for random error & take action if appropriate
- One out of three pass - Unacceptable performance, Review for systematic error
- All failed - Unacceptable performance, Review for systematic error



Lab : 1034

Cycle No : 230310

Lab Name : KRSNAA DIAGNOSTICS LTD, BATALA

Sample No : 03

Report Date : 19/12/2023

Sample Date : 07/10/2023

Haematology - CBC, MCH (Mean Corpuscular Hb), pg

Comparative Statistics

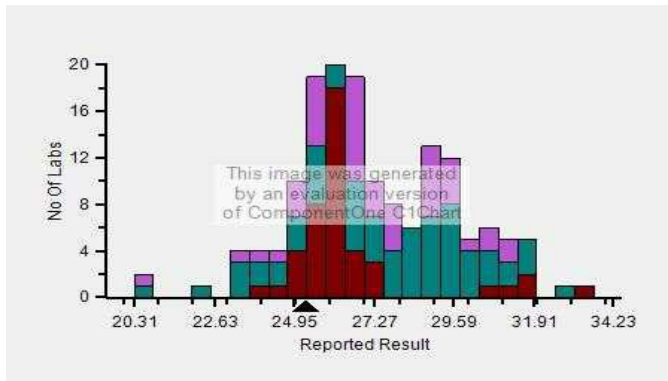
	N	Mean	SD	CV%	Excluded
All Methods	170	27.27	2.32	8.50	4
Calculated - (Your Method)	118	27.28	2.32	8.52	3
Horiba Yumizen H550 - (Your Analyzer)	45	26.65	1.97	7.39	1

Evaluation Based On - Equipment wise Peer Grouping

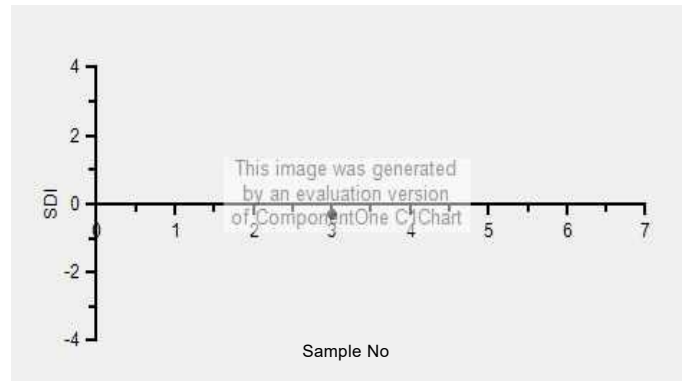
Your Result	25.30	SDI / z-Score	-0.29
Assigned Value	26.03	Average SDI	-0.14
SDPA	2.490	Uncertainty of AV	0.41
Standard Unit Result Val	25.30	%DEV	-5.05

Note : # - Not evaluated / Bimodal distribution
X : SDI more than 4

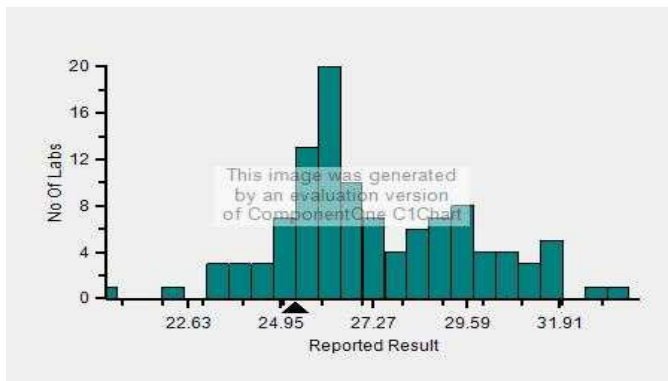
Frequency Histogram



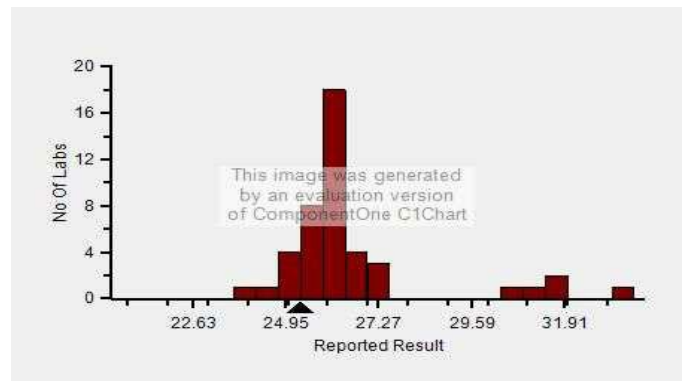
Z-Score Trend - Within Round



Frequency Histogram Your Method



Frequency Histogram Your Analyzer



Lab : 1034

Cycle No : 230310

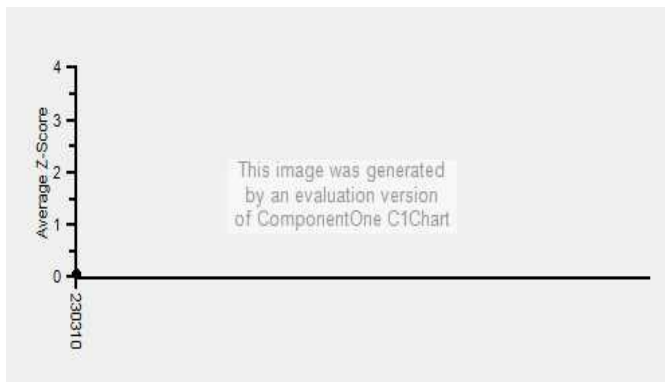
Lab Name : KRSNAA DIAGNOSTICS LTD, BATALA

Sample No : 03

Report Date : 19/12/2023

Sample Date : 07/10/2023

Frequency Histogram Your Method



Note : SDI with * marked are not considered for evaluation

Comments :

Haematology - CBC, MCH (Mean Corpuscular Hb)		N	Mean	SD	CV%	Excluded
	All Analyzer	170	27.27	2.32	8.50	4
Your Analyzer :	Horiba Yumizen H550	45	26.65	1.97	7.39	1
	Horiba Yumizen H500	18	26.51	1.78	6.73	-
	Erba ELite 580	13	26.53	0.45	1.68	-
	Mindray BC-5000	12	29.88	0.96	3.21	-
	Horiba ABX Pentra XL 80	8	28.06	3.43	12.23	1
	Nihon Kohden Celltac Alpha	6	26.71	2.52	9.45	-
	Sysmex XP-100	5	27.55	1.98	7.19	-
	Beckman Coulter DxH 560	5	23.86	0.48	2.00	-

Remarks: Interpretation of your reports

- a) If your SDI lies between +/- 2.0 SDI then your results are well within limits.
- b) If your SDI lies between +/-2.0 to 2.99 SDI then it is a warning alert flag.
- c) If your SDI is +/- 3.0 SDI or more then it is an action alert flag.

Interpretation when an analyte is reported for multiple samples in a Round:

- a) Reported on 2 samples:
 - Two out of two pass - Acceptable performance
 - One out of two pass - Review for random error & take action if appropriate
 - Both failed - Unacceptable performance, Review for systematic error
- b) Reported on 3 samples:
 - All pass - Acceptable performance
 - Two out of three pass - Review for random error & take action if appropriate
 - One out of three pass - Unacceptable performance, Review for systematic error
 - All failed - Unacceptable performance, Review for systematic error



Lab : 1034

Cycle No : 230310

Lab Name : KRSNAA DIAGNOSTICS LTD, BATALA

Sample No : 03

Report Date : 19/12/2023

Sample Date : 07/10/2023

Haematology - CBC, MCHC (Mean Corpuscular Hb Concentration), g/dL

Comparative Statistics

	N	Mean	SD	CV%	Excluded
All Methods	170	21.53	2.56	11.88	6
Calculated - (Your Method)	117	21.22	2.26	10.65	5
Horiba Yumizen H550 - (Your Analyzer)	44	20.97	2.05	9.79	2

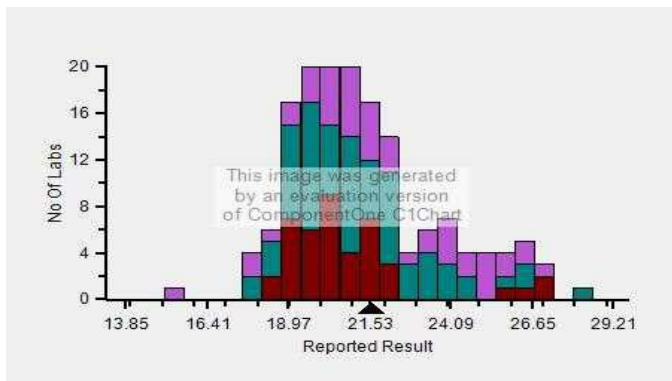
Evaluation Based On - Equipment wise Peer Grouping

Your Result	21.60	SDI / z-Score	0.47
Assigned Value	20.53	Average SDI	0.24
SDPA	2.300	Uncertainty of AV	0.38
Standard Unit Result Val	21.60	%DEV	3.00

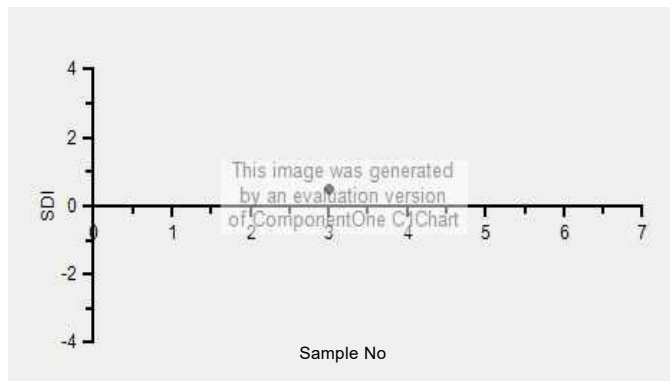
Note : # - Not evaluated / Bimodal distribution

X : SDI more than 4

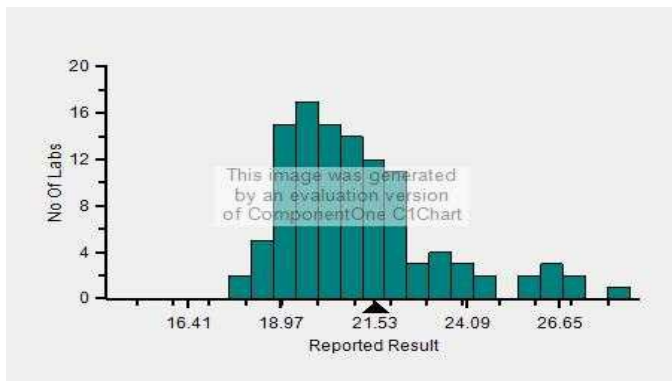
Frequency Histogram



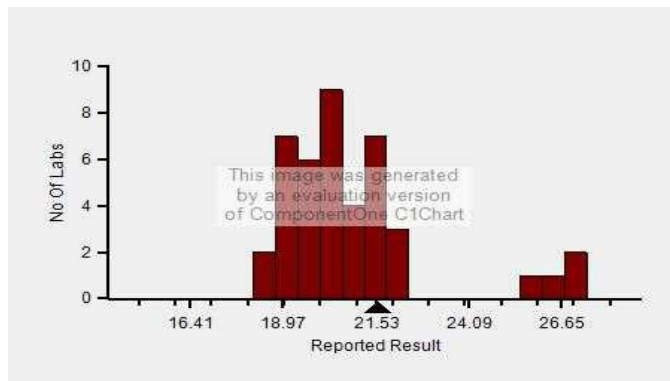
Z-Score Trend - Within Round



Frequency Histogram Your Method



Frequency Histogram Your Analyzer



Lab : 1034

Cycle No : 230310

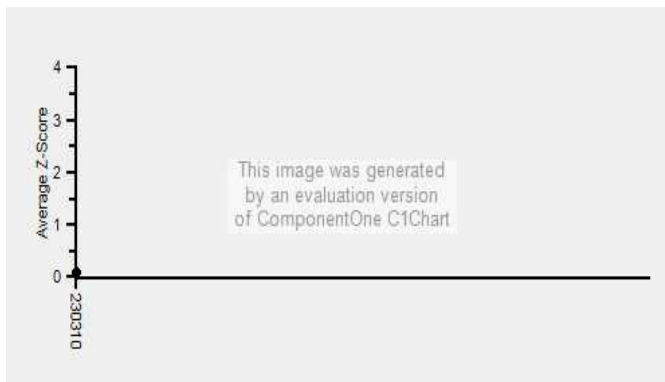
Lab Name : KRSNAA DIAGNOSTICS LTD, BATALA

Sample No : 03

Report Date : 19/12/2023

Sample Date : 07/10/2023

Frequency Histogram Your Method



Note : SDI with * marked are not considered for evaluation

Comments :

Haematology - CBC, MCHC (Mean Corpuscular Hb Concentration)

		N	Mean	SD	CV%	Excluded
	All Analyzer	170	21.53	2.56	11.88	6
Your Analyzer :	Horiba Yumizen H550	44	20.97	2.05	9.79	2
	Horiba Yumizen H500	19	20.98	2.10	9.99	-
	Erba ELite 580	13	19.92	0.57	2.84	-
	Mindray BC-5000	12	21.67	0.81	3.73	1
	Horiba ABX Pentra XL 80	8	26.19	3.24	12.38	-
	Nihon Kohden Celltac Alpha	6	21.10	3.19	15.10	-
	Sysmex XP-100	5	24.28	1.59	6.56	-
	Beckman Coulter DxH 560	5	18.60	0.70	3.74	-

Remarks: Interpretation of your reports

- a) If your SDI lies between +/- 2.0 SDI then your results are well within limits.
- b) If your SDI lies between +/-2.0 to 2.99 SDI then it is a warning alert flag.
- c) If your SDI is +/- 3.0 SDI or more then it is an action alert flag.

Interpretation when an analyte is reported for multiple samples in a Round:

a) Reported on 2 samples:

- Two out of two pass - Acceptable performance
- One out of two pass - Review for random error & take action if appropriate
- Both failed - Unacceptable performance, Review for systematic error

b) Reported on 3 samples:

- All pass - Acceptable performance
- Two out of three pass - Review for random error & take action if appropriate
- One out of three pass - Unacceptable performance, Review for systematic error
- All failed - Unacceptable performance, Review for systematic error



Lab : 1034

Cycle No : 230310

Lab Name : KRSNAA DIAGNOSTICS LTD, BATALA

Sample No : 03

Report Date : 19/12/2023

Sample Date : 07/10/2023

Haematology - CBC, MCV (Mean Corpuscular Volume), fL

Comparative Statistics

	N	Mean	SD	CV%	Excluded
All Methods	170	127.18	10.21	8.03	1
Calculated - (Your Method)	98	128.18	10.24	7.99	--
Horiba Yumizen H550 - (Your Analyzer)	45	125.66	7.74	6.16	--

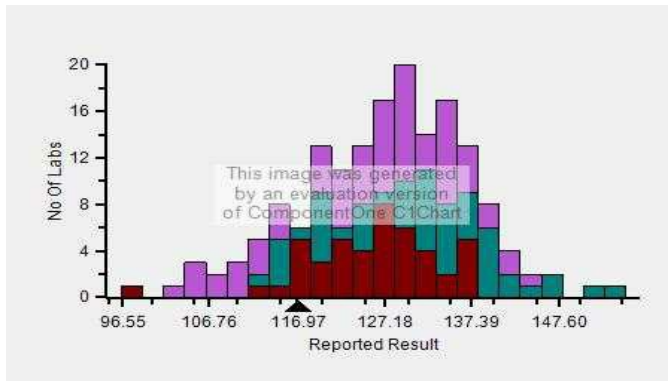
Evaluation Based On - Equipment wise Peer Grouping

Your Result	117.10	SDI / z-Score	-0.69
Assigned Value	126.21	Average SDI	-0.35
SDPA	13.200	Uncertainty of AV	2.02
Standard Unit Result Val	117.10	%DEV	-6.81

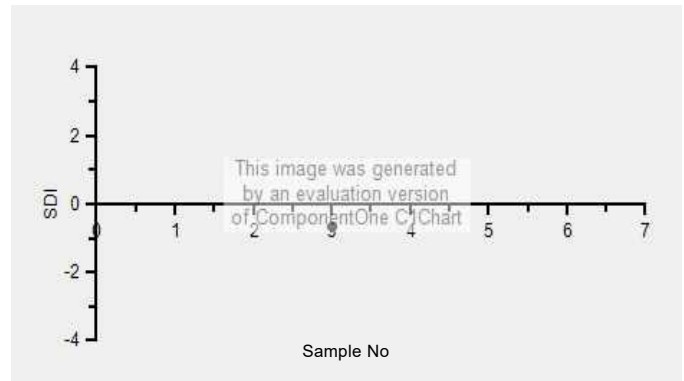
Note : # - Not evaluated / Bimodal distribution

X : SDI more than 4

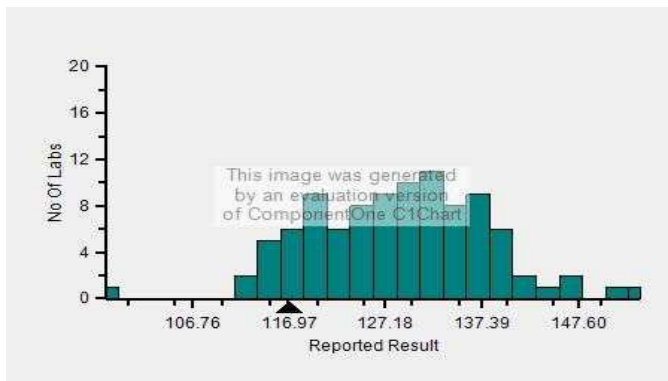
Frequency Histogram



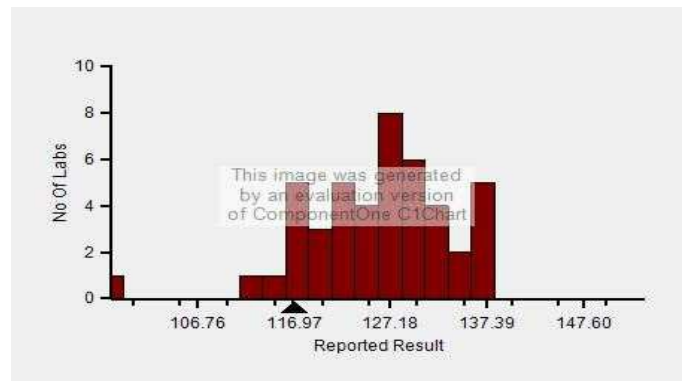
Z-Score Trend - Within Round



Frequency Histogram Your Method



Frequency Histogram Your Analyzer



Lab : 1034

Cycle No : 230310

Lab Name : KRSNAA DIAGNOSTICS LTD, BATALA

Sample No : 03

Report Date : 19/12/2023

Sample Date : 07/10/2023

Haematology - CBC, Platelet Count, 1000/ μ L

Comparative Statistics

	N	Mean	SD	CV%	Excluded
All Methods	170	83.98	16.56	19.71	27
Impedance - (Your Method)	159	83.87	15.70	18.72	26
Horiba Yumizen H550 - (Your Analyzer)	46	87.19	11.88	13.63	4

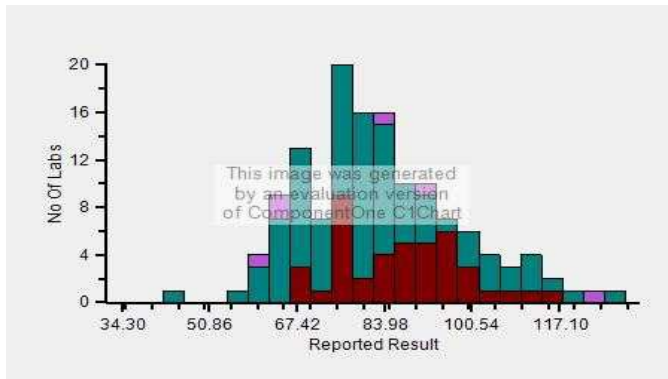
Evaluation Based On - Equipment wise Peer Grouping

Your Result	145.00	SDI / z-Score	4.52
Assigned Value	81.43	Average SDI	2.26
SDPA	14.055	Uncertainty of AV	2.27
Standard Unit Result Val	145.00	%DEV	66.30

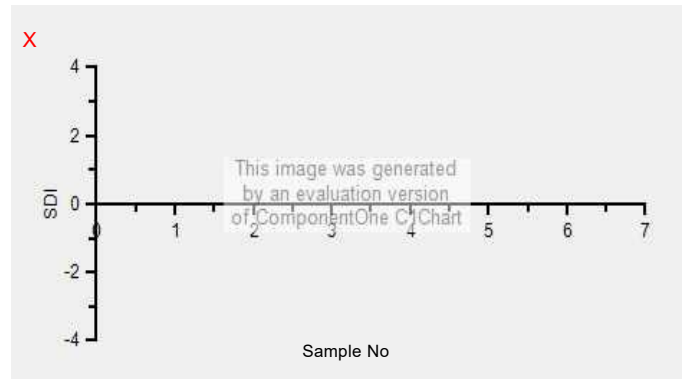
Note : # - Not evaluated / Bimodal distribution

X : SDI more than 4

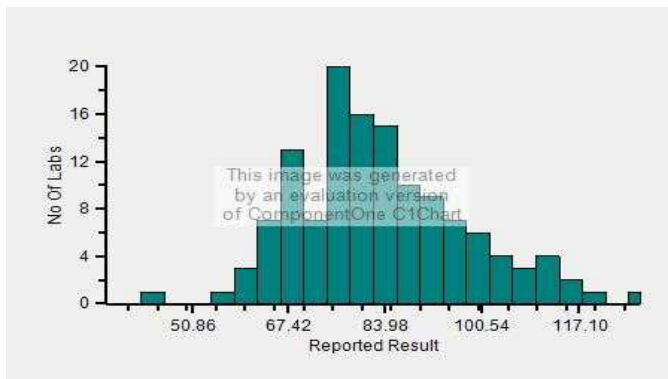
Frequency Histogram



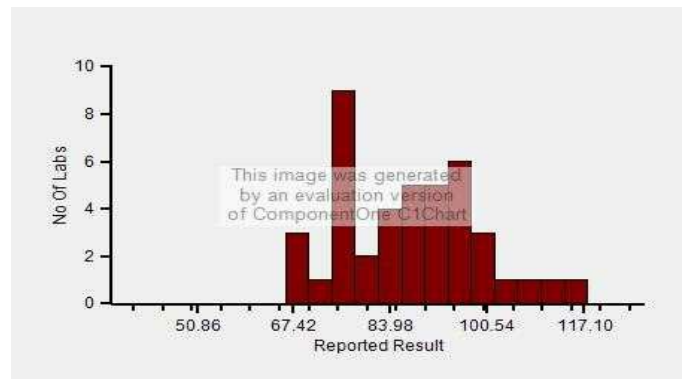
Z-Score Trend - Within Round



Frequency Histogram Your Method



Frequency Histogram Your Analyzer



Lab : 1034

Cycle No : 230310

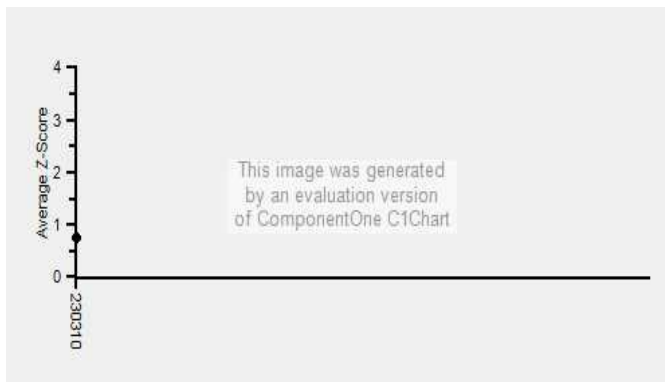
Lab Name : KRSNAA DIAGNOSTICS LTD, BATALA

Sample No : 03

Report Date : 19/12/2023

Sample Date : 07/10/2023

Frequency Histogram Your Method



Note : SDI with * marked are not considered for evaluation

Comments :

Haematology - CBC, Platelet Count						
		N	Mean	SD	CV%	Excluded
	All Analyzer	170	83.98	16.56	19.71	27
Your Analyzer :	Horiba Yumizen H550	46	87.19	11.88	13.63	4
	Horiba Yumizen H500	17	74.44	17.84	23.97	1
	Erba ELite 580	13	80.17	4.71	5.87	1
	Mindray BC-5000	12	79.46	6.02	7.58	1
	Horiba ABX Pentra XL 80	8	134.00	10.86	8.11	4
	Nihon Kohden Celltac Alpha	6	77.93	12.12	15.56	-
	Sysmex XP-100	5	71.25	8.06	11.31	1
	Beckman Coulter DxH 560	5	83.94	3.00	3.58	-

Remarks: Interpretation of your reports

- a) If your SDI lies between +/- 2.0 SDI then your results are well within limits.
- b) If your SDI lies between +/-2.0 to 2.99 SDI then it is a warning alert flag.
- c) If your SDI is +/- 3.0 SDI or more then it is an action alert flag.

Interpretation when an analyte is reported for multiple samples in a Round:

- a) Reported on 2 samples:
 - Two out of two pass - Acceptable performance
 - One out of two pass - Review for random error & take action if appropriate
 - Both failed - Unacceptable performance, Review for systematic error
- b) Reported on 3 samples:
 - All pass - Acceptable performance
 - Two out of three pass - Review for random error & take action if appropriate
 - One out of three pass - Unacceptable performance, Review for systematic error
 - All failed - Unacceptable performance, Review for systematic error



Lab : 1034

Cycle No : 230310

Lab Name : KRSNAA DIAGNOSTICS LTD, BATALA

Sample No : 03

Report Date : 19/12/2023

Sample Date : 07/10/2023

Haematology - CBC, RDW CV%, %

Comparative Statistics

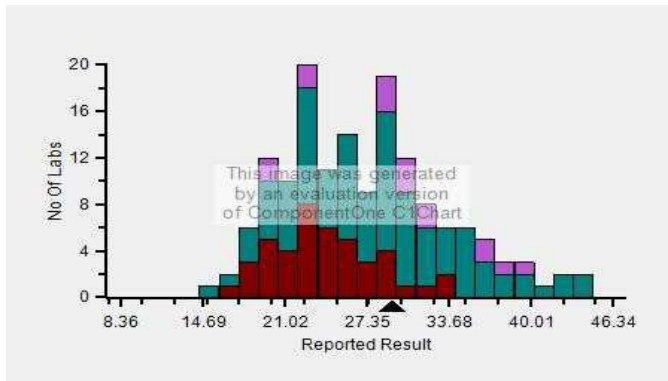
	N	Mean	SD	CV%	Excluded
All Methods	161	27.35	6.33	23.16	8
Calculated - (Your Method)	144	27.07	6.33	23.36	7
Horiba Yumizen H550 - (Your Analyzer)	45	24.07	4.22	17.54	2

Evaluation Based On - Equipment wise Peer Grouping

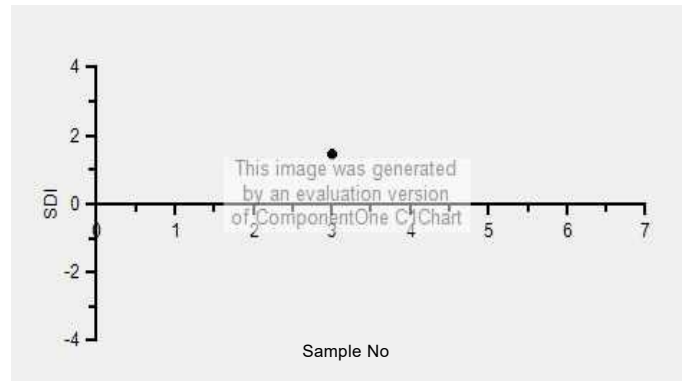
Your Result	29.30	SDI / z-Score	1.46
Assigned Value	23.70	Average SDI	0.73
SDPA	3.830	Uncertainty of AV	0.62
Standard Unit Result Val	29.30	%DEV	21.71

Note : # - Not evaluated / Bimodal distribution
X : SDI more than 4

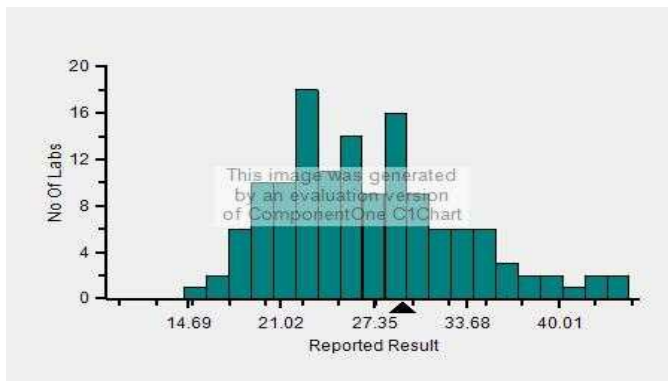
Frequency Histogram



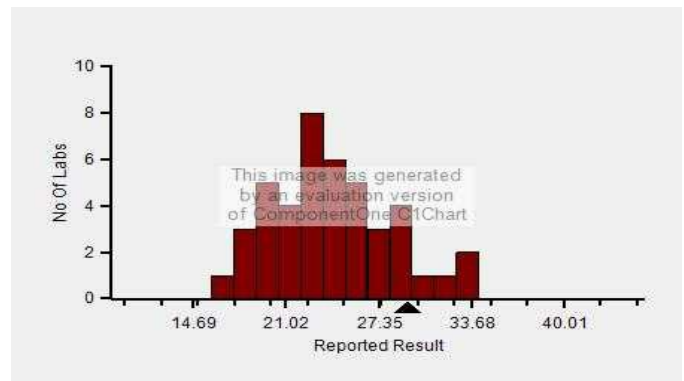
Z-Score Trend - Within Round



Frequency Histogram Your Method



Frequency Histogram Your Analyzer



Lab : 1034

Cycle No : 230310

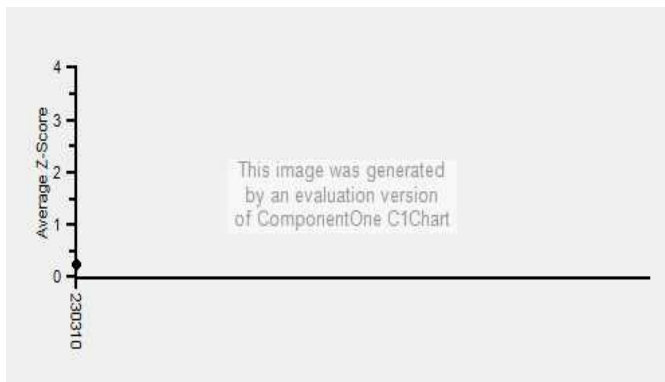
Lab Name : KRSNAA DIAGNOSTICS LTD, BATALA

Sample No : 03

Report Date : 19/12/2023

Sample Date : 07/10/2023

Frequency Histogram Your Method



Note : SDI with * marked are not considered for evaluation

Comments :

Haematology - CBC, RDW CV%		N	Mean	SD	CV%	Excluded
	All Analyzer	161	27.35	6.33	23.16	8
Your Analyzer :	Horiba Yumizen H550	45	24.07	4.22	17.54	2
	Horiba Yumizen H500	18	22.62	3.36	14.86	-
	Erba ELite 580	13	29.67	1.94	6.55	2
	Mindray BC-5000	11	32.21	3.86	11.98	1
	Horiba ABX Pentra XL 80	7	21.04	1.70	8.09	-
	Nihon Kohden Celltac Alpha	6	32.35	5.77	17.84	-
	Beckman Coulter DxH 560	5	35.90	5.39	15.03	-
	Avantor H 33-S	5	30.64	4.32	14.09	-

Remarks: Interpretation of your reports

- a) If your SDI lies between +/- 2.0 SDI then your results are well within limits.
- b) If your SDI lies between +/-2.0 to 2.99 SDI then it is a warning alert flag.
- c) If your SDI is +/- 3.0 SDI or more then it is an action alert flag.

Interpretation when an analyte is reported for multiple samples in a Round:

a) Reported on 2 samples:

- Two out of two pass - Acceptable performance
- One out of two pass - Review for random error & take action if appropriate
- Both failed - Unacceptable performance, Review for systematic error

b) Reported on 3 samples:

- All pass - Acceptable performance
- Two out of three pass - Review for random error & take action if appropriate
- One out of three pass - Unacceptable performance, Review for systematic error
- All failed - Unacceptable performance, Review for systematic error



Lab : 1034

Cycle No : 230310

Lab Name : KRSNAA DIAGNOSTICS LTD, BATALA

Sample No : 03

Report Date : 19/12/2023

Sample Date : 07/10/2023

Haematology - CBC, Total Leucocytes (WBC) count, / μ l

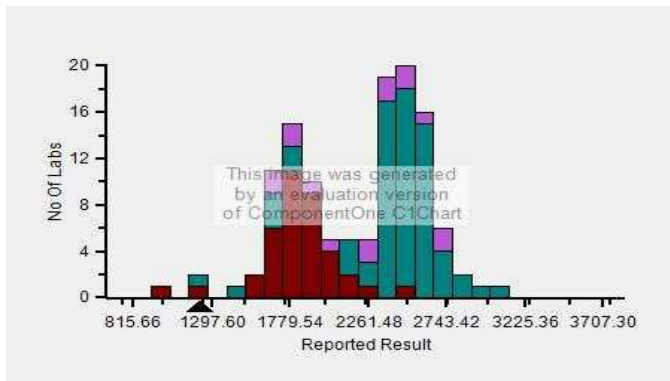
Comparative Statistics

	N	Mean	SD	CV%	Excluded
All Methods	170	2,261.48	481.94	21.31	42
Impedance - (Your Method)	146	2,262.87	500.19	22.10	38
Horiba Yumizen H550 - (Your Analyzer)	45	1,835.53	252.65	13.76	7

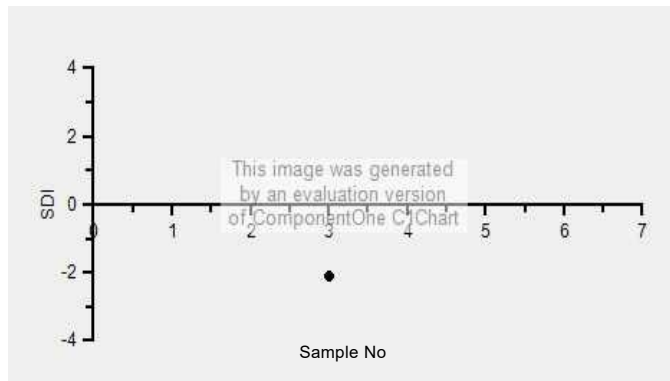
Your Result	1.23	SDI / z-Score	-2.11
Assigned Value	1,834.53	Average SDI	-1.05
SDPA	286.500	Uncertainty of AV	52.80
Standard Unit Result Val	1,230.00	%DEV	-32.99

Note : # - Not evaluated / Bimodal distribution
X : SDI more than 4

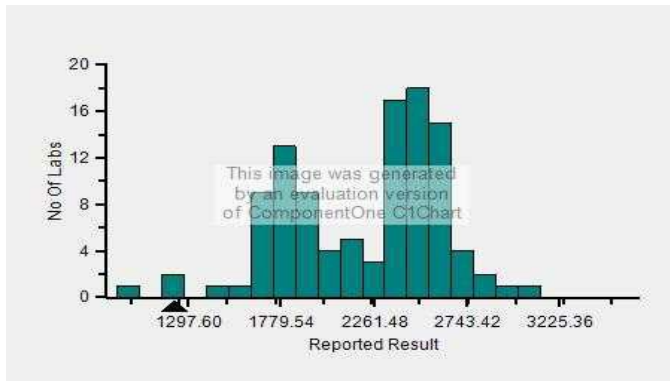
Frequency Histogram



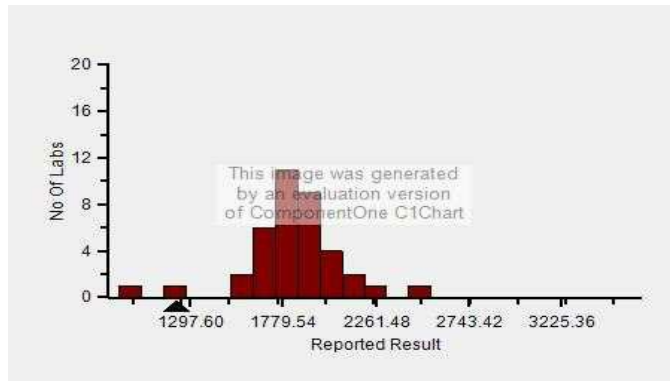
Z-Score Trend - Within Round



Frequency Histogram Your Method



Frequency Histogram Your Analyzer



Lab : 1034

Cycle No : 230310

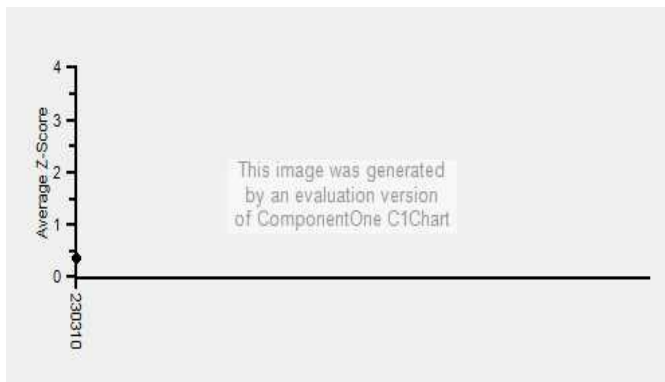
Lab Name : KRSNAA DIAGNOSTICS LTD, BATALA

Sample No : 03

Report Date : 19/12/2023

Sample Date : 07/10/2023

Frequency Histogram Your Method



Note : SDI with * marked are not considered for evaluation

Comments :

Haematology - CBC, Total Leucocytes (WBC) count		N	Mean	SD	CV%	Excluded
	All Analyzer	170	2,261.48	481.94	21.31	42
Your Analyzer :	Horiba Yumizen H550	45	1,835.53	252.65	13.76	7
	Horiba Yumizen H500	18	1,859.29	375.10	20.17	4
	Erba ELite 580	13	2,500.00	58.55	2.34	5
	Mindray BC-5000	12	2,525.46	206.46	8.18	1
	Horiba ABX Pentra XL 80	8	4,400.00	0.00	0.00	6
	Nihon Kohden Celltac Alpha	6	2,548.00	97.57	3.83	1
	Sysmex XP-100	5	2,500.00	264.58	10.58	2
	Beckman Coulter DxH 560	5	2,456.00	69.14	2.82	-

Remarks: Interpretation of your reports

- a) If your SDI lies between +/- 2.0 SDI then your results are well within limits.
- b) If your SDI lies between +/-2.0 to 2.99 SDI then it is a warning alert flag.
- c) If your SDI is +/- 3.0 SDI or more then it is an action alert flag.

Interpretation when an analyte is reported for multiple samples in a Round:

- a) Reported on 2 samples:
 - Two out of two pass - Acceptable performance
 - One out of two pass - Review for random error & take action if appropriate
 - Both failed - Unacceptable performance, Review for systematic error
- b) Reported on 3 samples:
 - All pass - Acceptable performance
 - Two out of three pass - Review for random error & take action if appropriate
 - One out of three pass - Unacceptable performance, Review for systematic error
 - All failed - Unacceptable performance, Review for systematic error

Dr Puneet Kumar Nigam

Dr Puneet Kumar Nigam
PT coordinator & Technical Manager, MHL EQAS
Unit No. 409-416.
Commercial Building - 1A
Kohinoor Mall, Kiro Road, Kurla (W),
Mumbai - 400070

This is a computer generated report hence signature is not required



PC-1022

Lab : 1034

Lab Name : KRSNAA DIAGNOSTICS LTD, BATALA

Report Date : 19/12/2023

Cycle No : 230310

Sample No : 04

Sample Date : 07/10/2023

Haematology - CBC, Erythrocyte (RBC) Count, mill/cu.mm

Comparative Statistics

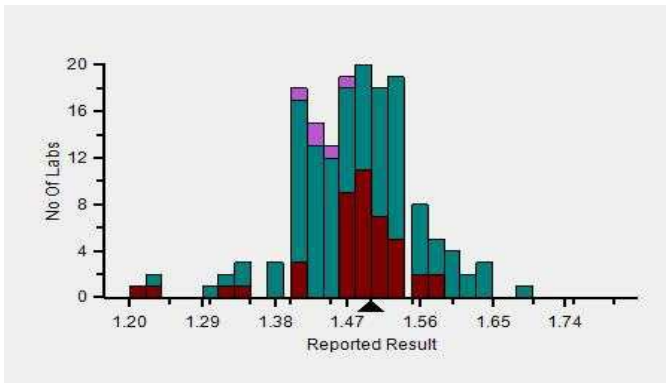
	N	Mean	SD	CV%	Excluded
All Methods	169	1.47	0.09	6.00	6
Impedance - (Your Method)	165	1.47	0.09	6.20	5
Horiba Yumizen H550 - (Your Analyzer)	47	1.45	0.12	8.29	1

Evaluation Based On - Equipment wise Peer Grouping

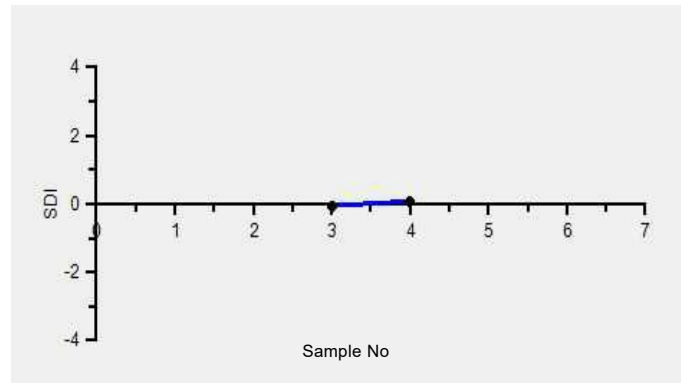
Your Result	1.50	SDI / z-Score	0.08
Assigned Value	1.49	Average SDI	0.02
SDPA	0.160	Uncertainty of AV	0.03
Standard Unit Result Val	1.50	%DEV	3.66

Note : # - Not evaluated / Bimodal distribution
X : SDI more than 4

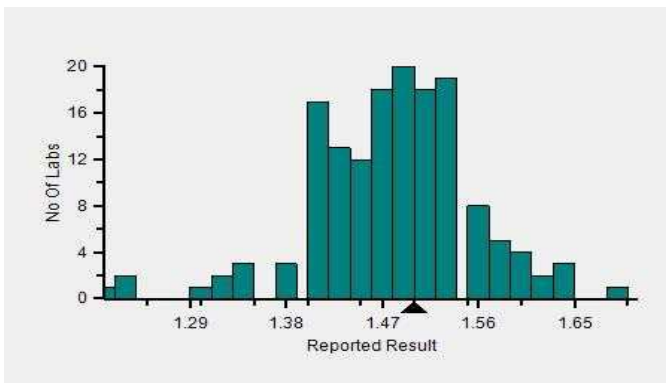
Frequency Histogram



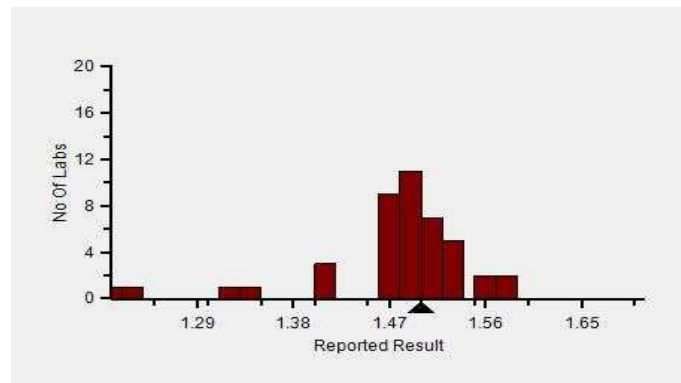
Z-Score Trend - Within Round



Frequency Histogram Your Method



Frequency Histogram Your Analyzer



Lab : 1034

Cycle No : 230310

Lab Name : KRSNAA DIAGNOSTICS LTD, BATALA

Sample No : 04

Report Date : 19/12/2023

Sample Date : 07/10/2023

Frequency Histogram Your Method



Note : SDI with * marked are not considered for evaluation

Comments :

Haematology - CBC, Erythrocyte (RBC) Count						
		N	Mean	SD	CV%	Excluded
	All Analyzer	169	1.47	0.09	6.00	6
Your Analyzer :	Horiba Yumizen H550	47	1.45	0.12	8.29	1
	Horiba Yumizen H500	17	1.46	0.07	4.88	1
	Horiba Yumizen H500	17	1.46	0.07	4.88	1
	Erba ELite 580	13	1.45	0.06	4.21	-
	Mindray BC-5000	12	1.49	0.06	3.89	-
	Horiba ABX Pentra XL 80	9	1.43	0.03	2.38	-
	Nihon Kohden Celltac Alpha	6	1.54	0.06	3.70	-
	Sysmex XP-100	5	1.59	0.04	2.26	-

Remarks: Interpretation of your reports

- a) If your SDI lies between +/- 2.0 SDI then your results are well within limits.
- b) If your SDI lies between +/-2.0 to 2.99 SDI then it is a warning alert flag.
- c) If your SDI is +/- 3.0 SDI or more then it is an action alert flag.

Interpretation when an analyte is reported for multiple samples in a Round:

- a) Reported on 2 samples:
 - Two out of two pass - Acceptable performance
 - One out of two pass - Review for random error & take action if appropriate
 - Both failed - Unacceptable performance, Review for systematic error
- b) Reported on 3 samples:
 - All pass - Acceptable performance
 - Two out of three pass - Review for random error & take action if appropriate
 - One out of three pass - Unacceptable performance, Review for systematic error
 - All failed - Unacceptable performance, Review for systematic error



Lab : 1034

Cycle No : 230310

Lab Name : KRSNAA DIAGNOSTICS LTD, BATALA

Sample No : 04

Report Date : 19/12/2023

Sample Date : 07/10/2023

Haematology - CBC, Haemoglobin, %

Comparative Statistics

	N	Mean	SD	CV%	Excluded
All Methods	169	4.22	0.28	6.52	4
Non Cyanide method - (Your Method)	30	4.12	0.22	5.29	--
Horiba Yumizen H550 - (Your Analyzer)	47	4.05	0.12	2.89	1

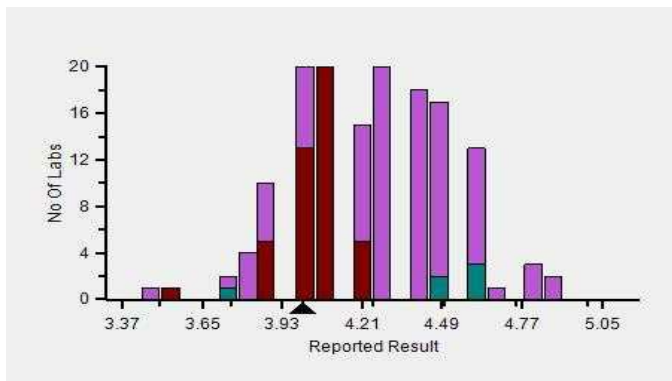
Evaluation Based On - Equipment wise Peer Grouping

Your Result	4.00	SDI / z-Score	-0.26
Assigned Value	4.07	Average SDI	-0.34
SDPA	0.280	Uncertainty of AV	0.04
Standard Unit Result Val	4.00	%DEV	-1.16

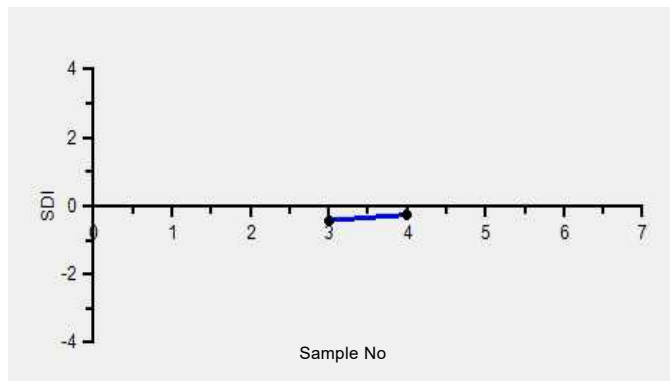
Note : # - Not evaluated / Bimodal distribution

X : SDI more than 4

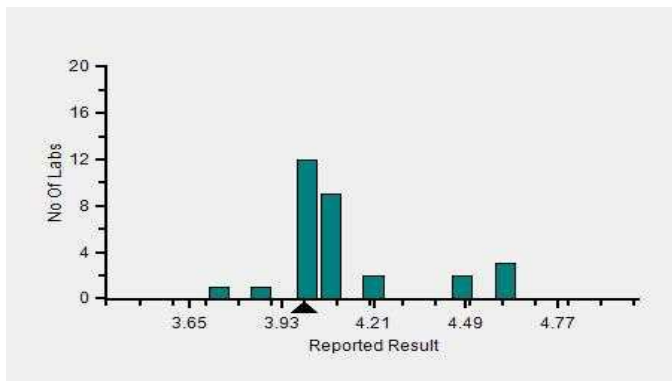
Frequency Histogram



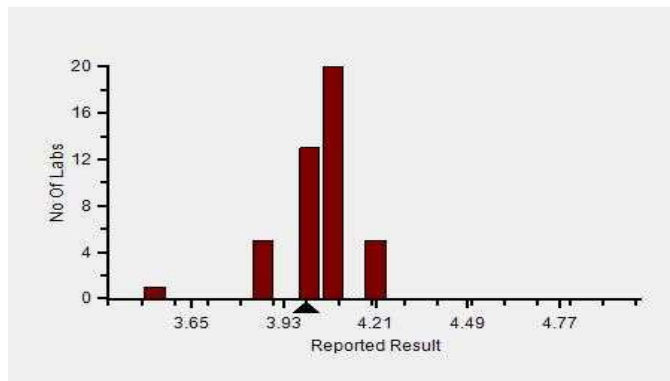
Z-Score Trend - Within Round



Frequency Histogram Your Method



Frequency Histogram Your Analyzer



Lab : 1034

Cycle No : 230310

Lab Name : KRSNAA DIAGNOSTICS LTD, BATALA

Sample No : 04

Report Date : 19/12/2023

Sample Date : 07/10/2023

Frequency Histogram Your Method



Note : SDI with * marked are not considered for evaluation

Comments :

Haematology - CBC, Haemoglobin

		N	Mean	SD	CV%	Excluded
	All Analyzer	169	4.22	0.28	6.52	4
Your Analyzer :	Horiba Yumizen H550	47	4.05	0.12	2.89	1
	Horiba Yumizen H500	17	4.03	0.21	5.24	1
	Horiba Yumizen H500	17	4.03	0.21	5.24	1
	Erba ELite 580	13	4.30	0.20	4.74	-
	Horiba ABX Pentra XL 80	9	4.26	0.12	2.91	-
	Mindray BC 5000	8	4.59	0.06	1.40	-
	Nihon Kohden Celltac Alpha	6	4.39	0.13	3.05	-
	Sysmex XP-100	5	4.46	0.09	2.00	-

Remarks: Interpretation of your reports

- If your SDI lies between +/- 2.0 SDI then your results are well within limits.
- If your SDI lies between +/-2.0 to 2.99 SDI then it is a warning alert flag.
- If your SDI is +/- 3.0 SDI or more then it is an action alert flag.

Interpretation when an analyte is reported for multiple samples in a Round:

a) Reported on 2 samples:

- Two out of two pass - Acceptable performance
- One out of two pass - Review for random error & take action if appropriate
- Both failed - Unacceptable performance, Review for systematic error

b) Reported on 3 samples:

- All pass - Acceptable performance
- Two out of three pass - Review for random error & take action if appropriate
- One out of three pass - Unacceptable performance, Review for systematic error
- All failed - Unacceptable performance, Review for systematic error



Lab : 1034

Cycle No : 230310

Lab Name : KRSNAA DIAGNOSTICS LTD, BATALA

Sample No : 04

Report Date : 19/12/2023

Sample Date : 07/10/2023

Haematology - CBC, Hematocrit, %

Comparative Statistics

	N	Mean	SD	CV%	Excluded
All Methods	162	18.52	2.30	12.42	4
Calculated - (Your Method)	101	18.48	2.45	13.25	2
Horiba Yumizen H550 - (Your Analyzer)	47	17.87	2.29	12.79	--

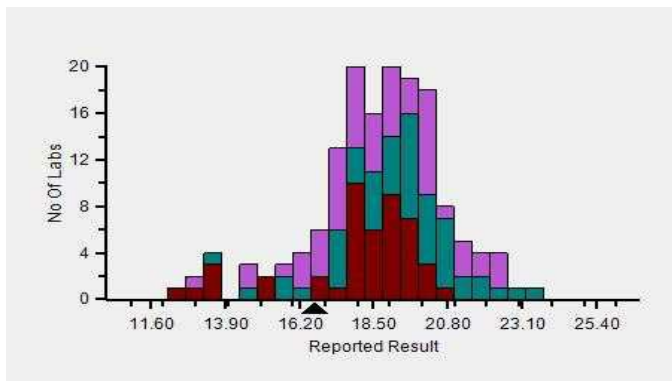
Evaluation Based On - Equipment wise Peer Grouping

Your Result	16.70	SDI / z-Score	-0.65
Assigned Value	18.57	Average SDI	-0.64
SDPA	2.900	Uncertainty of AV	0.47
Standard Unit Result Val	16.70	%DEV	-6.53

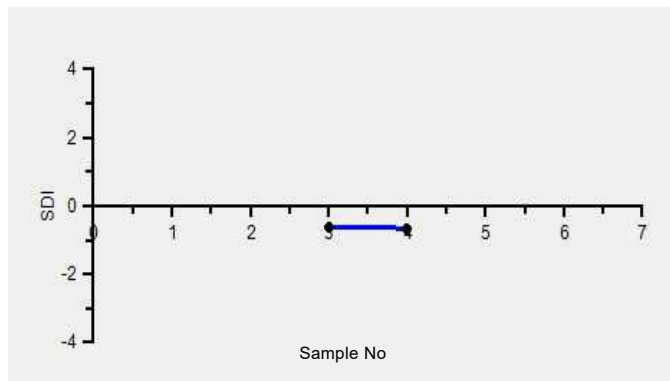
Note : # - Not evaluated / Bimodal distribution

X : SDI more than 4

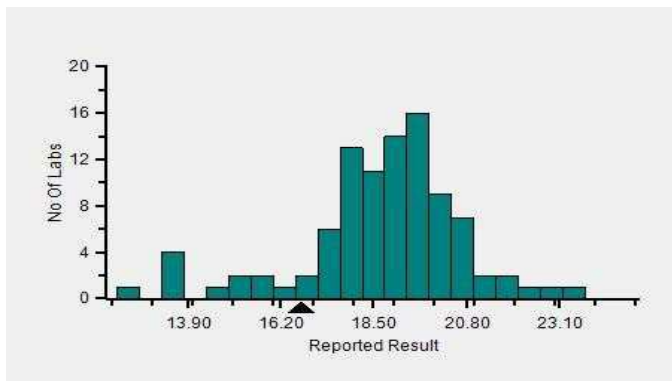
Frequency Histogram



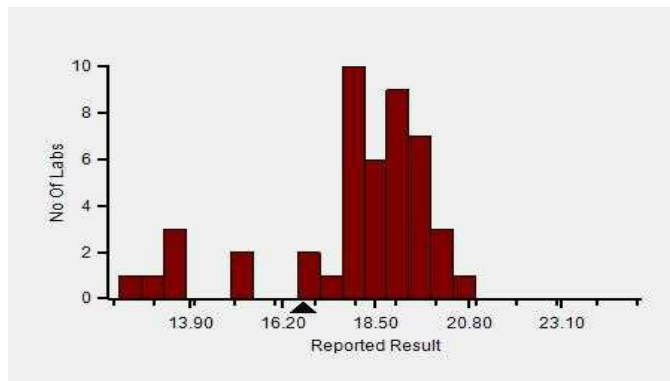
Z-Score Trend - Within Round



Frequency Histogram Your Method



Frequency Histogram Your Analyzer



Lab : 1034

Cycle No : 230310

Lab Name : KRSNAA DIAGNOSTICS LTD, BATALA

Sample No : 04

Report Date : 19/12/2023

Sample Date : 07/10/2023

Frequency Histogram Your Method



Note : SDI with * marked are not considered for evaluation

Comments :

Haematology - CBC, Hematocrit		N	Mean	SD	CV%	Excluded
	All Analyzer	162	18.52	2.30	12.42	4
Your Analyzer :	Horiba Yumizen H550	47	17.87	2.29	12.79	-
	Horiba Yumizen H500	17	17.92	2.09	11.69	-
	Horiba Yumizen H500	17	17.92	2.09	11.69	-
	Erba ELite 580	13	19.59	1.00	5.09	-
	Mindray BC-5000	12	20.68	2.13	10.32	-
	Horiba ABX Pentra XL 80	8	16.31	1.91	11.71	-
	Nihon Kohden Celltac Alpha	6	19.80	1.40	7.05	-
	Sysmex XN 350	5	19.78	1.39	7.05	-

Remarks: Interpretation of your reports

- a) If your SDI lies between +/- 2.0 SDI then your results are well within limits.
- b) If your SDI lies between +/-2.0 to 2.99 SDI then it is a warning alert flag.
- c) If your SDI is +/- 3.0 SDI or more then it is an action alert flag.

Interpretation when an analyte is reported for multiple samples in a Round:

- a) Reported on 2 samples:
 - Two out of two pass - Acceptable performance
 - One out of two pass - Review for random error & take action if appropriate
 - Both failed - Unacceptable performance, Review for systematic error
- b) Reported on 3 samples:
 - All pass - Acceptable performance
 - Two out of three pass - Review for random error & take action if appropriate
 - One out of three pass - Unacceptable performance, Review for systematic error
 - All failed - Unacceptable performance, Review for systematic error



Lab : 1034

Cycle No : 230310

Lab Name : KRSNAA DIAGNOSTICS LTD, BATALA

Sample No : 04

Report Date : 19/12/2023

Sample Date : 07/10/2023

Haematology - CBC, MCH (Mean Corpuscular Hb), pg

Comparative Statistics

	N	Mean	SD	CV%	Excluded
All Methods	169	28.76	2.07	7.18	3
Calculated - (Your Method)	118	28.70	2.10	7.30	3
Horiba Yumizen H550 - (Your Analyzer)	46	27.88	1.91	6.85	1

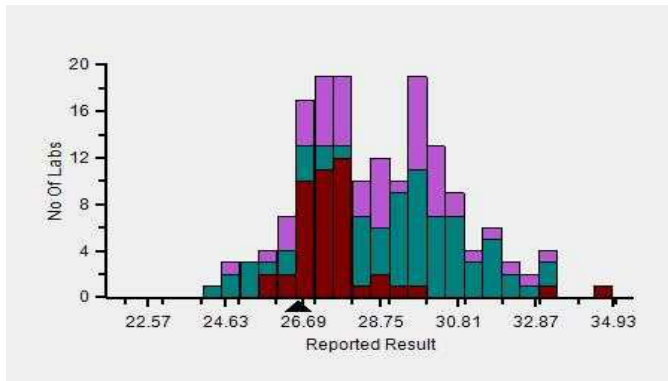
Evaluation Based On - Equipment wise Peer Grouping

Your Result	26.60	SDI / z-Score	-0.29
Assigned Value	27.38	Average SDI	-0.29
SDPA	2.700	Uncertainty of AV	0.44
Standard Unit Result Val	26.60	%DEV	-4.60

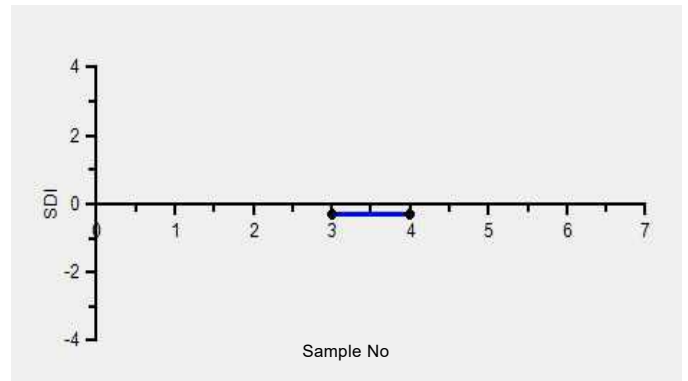
Note : # - Not evaluated / Bimodal distribution

X : SDI more than 4

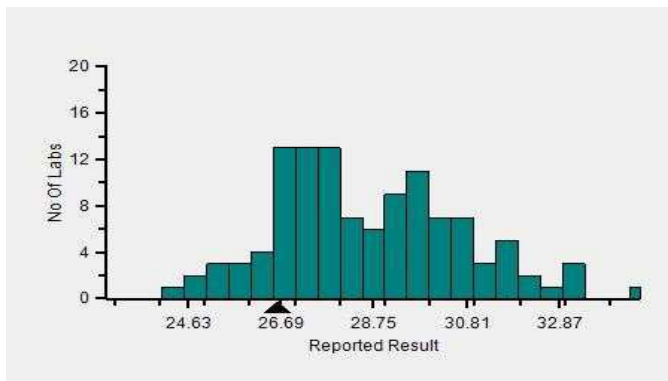
Frequency Histogram



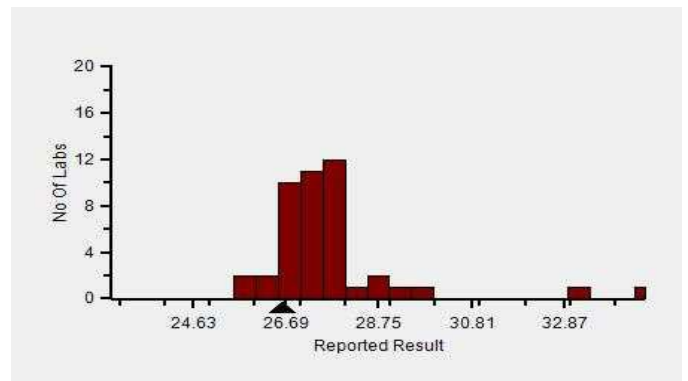
Z-Score Trend - Within Round



Frequency Histogram Your Method



Frequency Histogram Your Analyzer



Lab : 1034

Cycle No : 230310

Lab Name : KRSNAA DIAGNOSTICS LTD, BATALA

Sample No : 04

Report Date : 19/12/2023

Sample Date : 07/10/2023

Frequency Histogram Your Method



Note : SDI with * marked are not considered for evaluation

Comments :

Haematology - CBC, MCH (Mean Corpuscular Hb)						
		N	Mean	SD	CV%	Excluded
	All Analyzer	169	28.76	2.07	7.18	3
Your Analyzer :	Horiba Yumizen H550	46	27.88	1.91	6.85	1
	Horiba Yumizen H500	18	27.75	1.19	4.29	-
	Erba ELite 580	13	29.70	0.71	2.40	-
	Mindray BC-5000	12	30.94	1.13	3.65	-
	Horiba ABX Pentra XL 80	9	29.66	0.31	1.04	-
	Nihon Kohden Celltac Alpha	6	28.47	1.39	4.89	-
	Sysmex XP-100	5	27.96	0.75	2.68	-

Remarks: Interpretation of your reports

- If your SDI lies between +/- 2.0 SDI then your results are well within limits.
- If your SDI lies between +/-2.0 to 2.99 SDI then it is a warning alert flag.
- If your SDI is +/- 3.0 SDI or more then it is an action alert flag.

Interpretation when an analyte is reported for multiple samples in a Round:

- Reported on 2 samples:
 - Two out of two pass - Acceptable performance
 - One out of two pass - Review for random error & take action if appropriate
 - Both failed - Unacceptable performance, Review for systematic error
- Reported on 3 samples:
 - All pass - Acceptable performance
 - Two out of three pass - Review for random error & take action if appropriate
 - One out of three pass - Unacceptable performance, Review for systematic error
 - All failed - Unacceptable performance, Review for systematic error



Lab : 1034

Cycle No : 230310

Lab Name : KRSNAA DIAGNOSTICS LTD, BATALA

Sample No : 04

Report Date : 19/12/2023

Sample Date : 07/10/2023

Haematology - CBC, MCHC (Mean Corpuscular Hb Concentration), g/dL

Comparative Statistics

	N	Mean	SD	CV%	Excluded
All Methods	169	22.66	2.42	10.67	7
Calculated - (Your Method)	117	22.24	2.21	9.95	6
Horiba Yumizen H550 - (Your Analyzer)	45	22.18	2.03	9.13	3

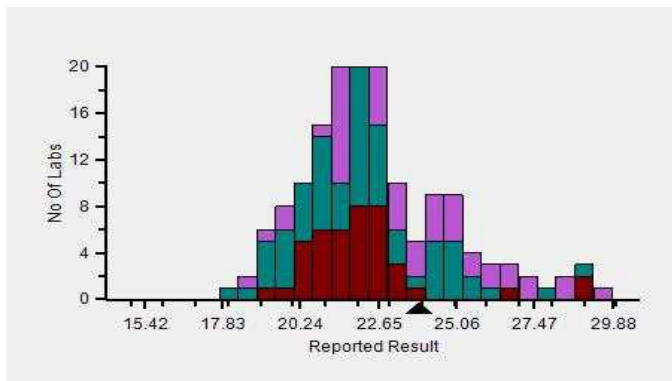
Evaluation Based On - Equipment wise Peer Grouping

Your Result	23.90	SDI / z-Score	0.76
Assigned Value	21.96	Average SDI	0.62
SDPA	2.560	Uncertainty of AV	0.41
Standard Unit Result Val	23.90	%DEV	7.76

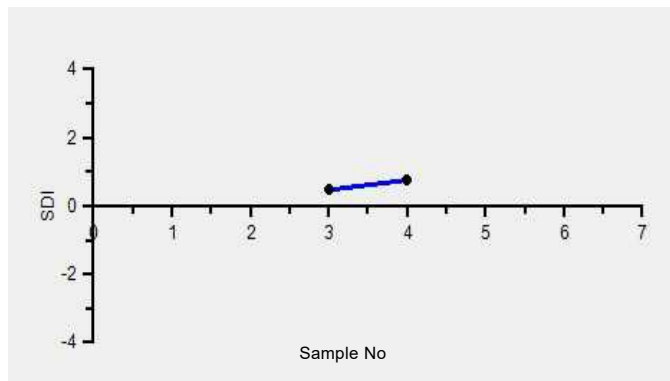
Note : # - Not evaluated / Bimodal distribution

X : SDI more than 4

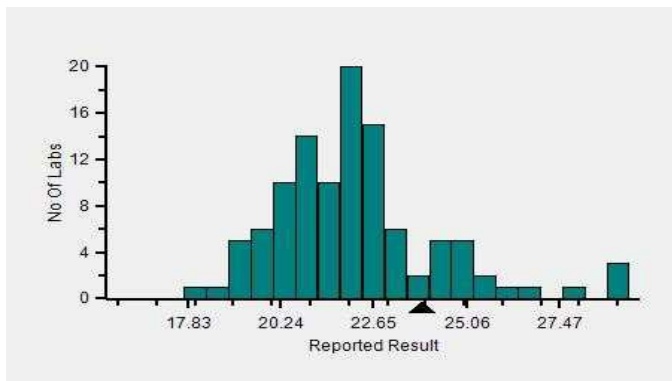
Frequency Histogram



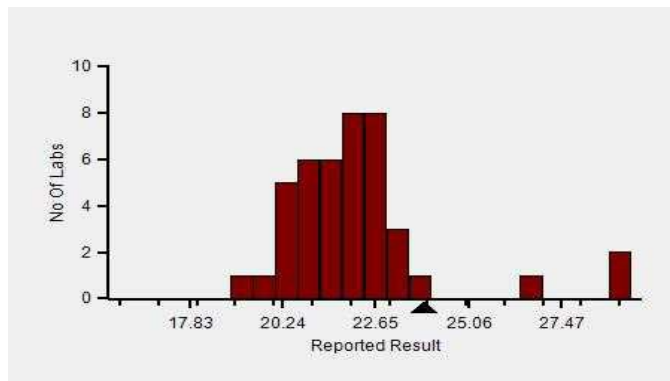
Z-Score Trend - Within Round



Frequency Histogram Your Method



Frequency Histogram Your Analyzer



Lab : 1034

Cycle No : 230310

Lab Name : KRSNAA DIAGNOSTICS LTD, BATALA

Sample No : 04

Report Date : 19/12/2023

Sample Date : 07/10/2023

Frequency Histogram Your Method



Note : SDI with * marked are not considered for evaluation

Comments :

Haematology - CBC, MCHC (Mean Corpuscular Hb Concentration)						
		N	Mean	SD	CV%	Excluded
	All Analyzer	169	22.66	2.42	10.67	7
Your Analyzer :	Horiba Yumizen H550	45	22.18	2.03	9.13	3
	Horiba Yumizen H500	19	22.06	1.25	5.67	-
	Horiba Yumizen H500	19	22.06	1.25	5.67	-
	Erba ELite 580	13	22.03	0.48	2.19	-
	Mindray BC-5000	12	21.72	1.40	6.44	1
	Horiba ABX Pentra XL 80	9	26.74	2.71	10.12	-
	Nihon Kohden Celltac Alpha	6	22.24	1.70	7.64	-
	Sysmex XP-100	5	24.76	0.77	3.10	-

Remarks: Interpretation of your reports

- a) If your SDI lies between +/- 2.0 SDI then your results are well within limits.
- b) If your SDI lies between +/-2.0 to 2.99 SDI then it is a warning alert flag.
- c) If your SDI is +/- 3.0 SDI or more then it is an action alert flag.

Interpretation when an analyte is reported for multiple samples in a Round:

- a) Reported on 2 samples:
 - Two out of two pass - Acceptable performance
 - One out of two pass - Review for random error & take action if appropriate
 - Both failed - Unacceptable performance, Review for systematic error
- b) Reported on 3 samples:
 - All pass - Acceptable performance
 - Two out of three pass - Review for random error & take action if appropriate
 - One out of three pass - Unacceptable performance, Review for systematic error
 - All failed - Unacceptable performance, Review for systematic error



Lab : 1034

Cycle No : 230310

Lab Name : KRSNAA DIAGNOSTICS LTD, BATALA

Sample No : 04

Report Date : 19/12/2023

Sample Date : 07/10/2023

Haematology - CBC, MCV (Mean Corpuscular Volume), fL

Comparative Statistics

	N	Mean	SD	CV%	Excluded
All Methods	169	127.06	12.09	9.52	1
Calculated - (Your Method)	100	128.35	11.91	9.28	--
Horiba Yumizen H550 - (Your Analyzer)	46	124.09	8.71	7.02	--

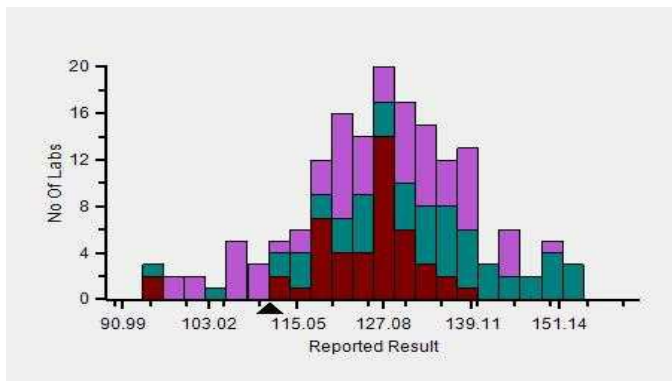
Evaluation Based On - Equipment wise Peer Grouping

Your Result	111.40	SDI / z-Score	-1.17
Assigned Value	125.10	Average SDI	-0.93
SDPA	11.700	Uncertainty of AV	1.81
Standard Unit Result Val	111.40	%DEV	-10.23

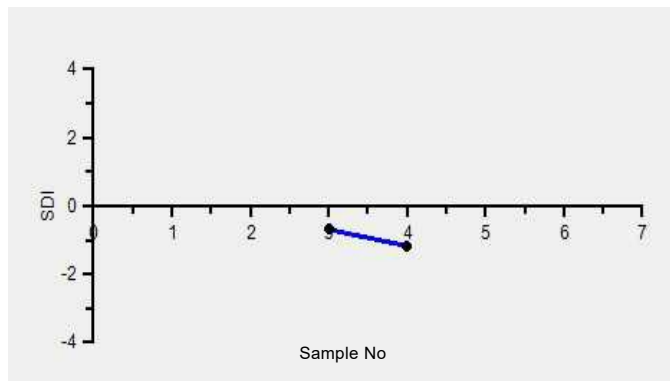
Note : # - Not evaluated / Bimodal distribution

X : SDI more than 4

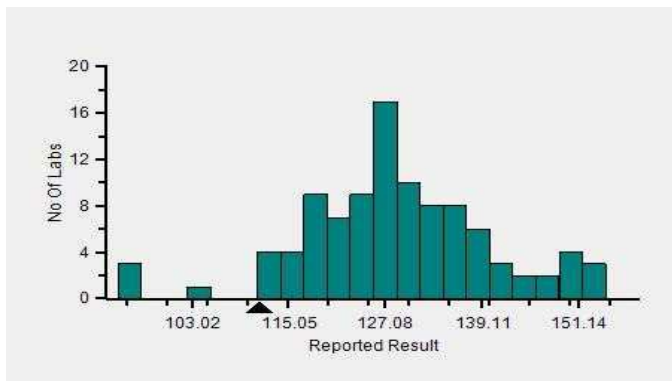
Frequency Histogram



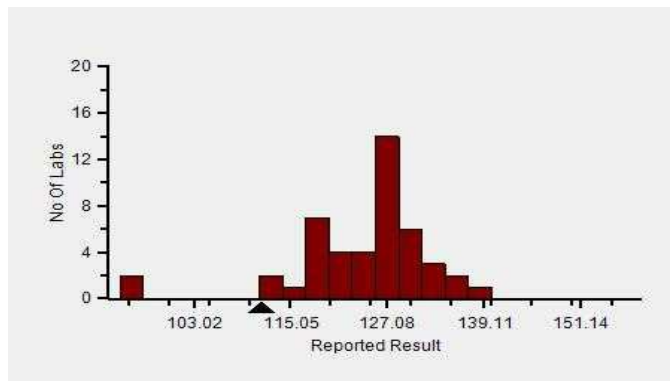
Z-Score Trend - Within Round



Frequency Histogram Your Method



Frequency Histogram Your Analyzer



Lab : 1034

Cycle No : 230310

Lab Name : KRSNAA DIAGNOSTICS LTD, BATALA

Sample No : 04

Report Date : 19/12/2023

Sample Date : 07/10/2023

Frequency Histogram Your Method



Note : SDI with * marked are not considered for evaluation

Comments :

Haematology - CBC, MCV (Mean Corpuscular Volume)		N	Mean	SD	CV%	Excluded
	All Analyzer	169	127.06	12.09	9.52	1
Your Analyzer :	Horiba Yumizen H550	46	124.09	8.71	7.02	-
	Horiba Yumizen H500	18	126.01	3.90	3.10	-
	Horiba Yumizen H500	18	126.01	3.90	3.10	-
	Erba ELite 580	13	134.87	3.18	2.36	-
	Mindray BC-5000	12	142.99	6.67	4.66	1
	Horiba ABX Pentra XL 80	9	111.89	10.48	9.37	-
	Nihon Kohden Celltac Alpha	6	128.57	12.30	9.56	-
	Sysmex XP-100	5	112.84	3.62	3.21	-

Remarks: Interpretation of your reports

- a) If your SDI lies between +/- 2.0 SDI then your results are well within limits.
- b) If your SDI lies between +/-2.0 to 2.99 SDI then it is a warning alert flag.
- c) If your SDI is +/- 3.0 SDI or more then it is an action alert flag.

Interpretation when an analyte is reported for multiple samples in a Round:

a) Reported on 2 samples:

- Two out of two pass - Acceptable performance
- One out of two pass - Review for random error & take action if appropriate
- Both failed - Unacceptable performance, Review for systematic error

b) Reported on 3 samples:

- All pass - Acceptable performance
- Two out of three pass - Review for random error & take action if appropriate
- One out of three pass - Unacceptable performance, Review for systematic error
- All failed - Unacceptable performance, Review for systematic error



Lab : 1034

Cycle No : 230310

Lab Name : KRSNAA DIAGNOSTICS LTD, BATALA

Sample No : 04

Report Date : 19/12/2023

Sample Date : 07/10/2023

Haematology - CBC, Platelet Count, 1000/ μ L

Comparative Statistics

	N	Mean	SD	CV%	Excluded
All Methods	169	145.29	21.38	14.71	13
Impedance - (Your Method)	160	146.50	21.31	14.55	12
Horiba Yumizen H550 - (Your Analyzer)	47	151.44	16.93	11.18	1

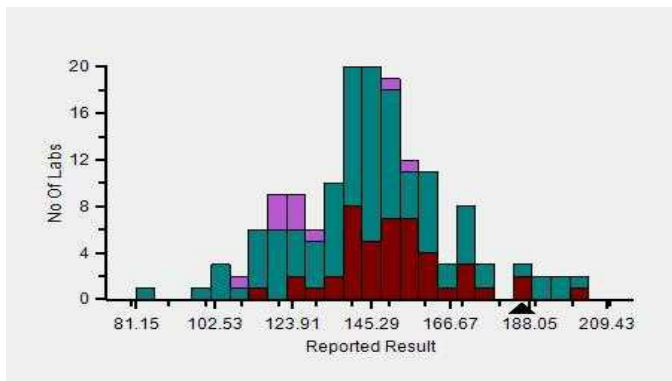
Evaluation Based On - Equipment wise Peer Grouping

Your Result	186.00	SDI / z-Score	2.02
Assigned Value	143.16	Average SDI	3.27
SDPA	21.200	Uncertainty of AV	3.31
Standard Unit Result Val	186.00	%DEV	22.82

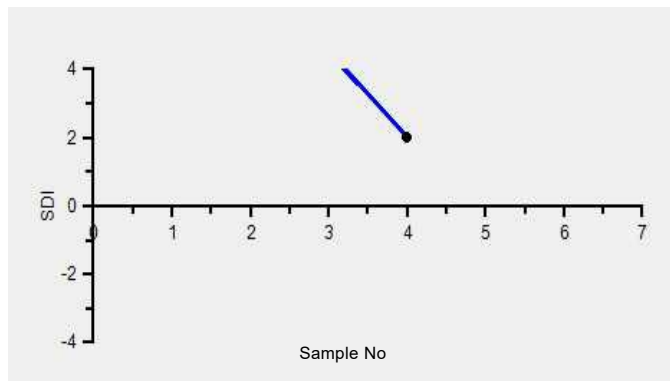
Note : # - Not evaluated / Bimodal distribution

X : SDI more than 4

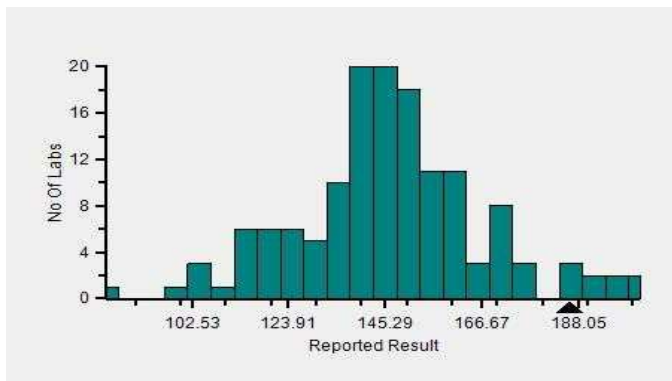
Frequency Histogram



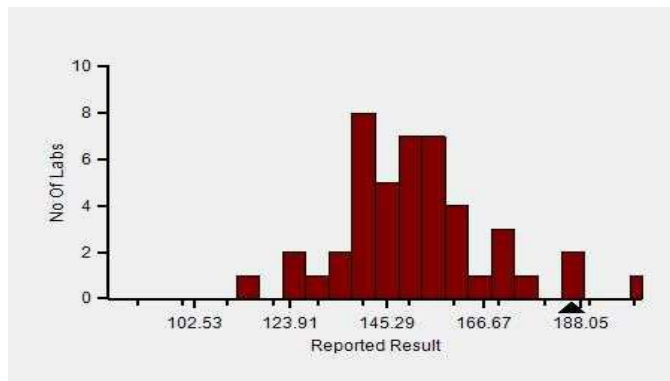
Z-Score Trend - Within Round



Frequency Histogram Your Method



Frequency Histogram Your Analyzer



Lab : 1034

Cycle No : 230310

Lab Name : KRSNAA DIAGNOSTICS LTD, BATALA

Sample No : 04

Report Date : 19/12/2023

Sample Date : 07/10/2023

Frequency Histogram Your Method



Note : SDI with * marked are not considered for evaluation

Comments :

Haematology - CBC, Platelet Count						
		N	Mean	SD	CV%	Excluded
	All Analyzer	169	145.29	21.38	14.71	13
Your Analyzer :	Horiba Yumizen H550	47	151.44	16.93	11.18	1
	Horiba Yumizen H500	17	118.19	18.38	15.55	-
	Horiba Yumizen H500	17	118.19	18.38	15.55	-
	Erba ELite 580	13	146.17	8.39	5.74	1
	Mindray BC-5000	12	145.64	8.88	6.10	1
	Horiba ABX Pentra XL 80	9	155.40	16.55	10.65	4
	Nihon Kohden Celltac Alpha	6	141.67	12.31	8.69	-
	Sysmex XP-100	5	129.40	19.93	15.40	-

Remarks: Interpretation of your reports

- If your SDI lies between +/- 2.0 SDI then your results are well within limits.
- If your SDI lies between +/-2.0 to 2.99 SDI then it is a warning alert flag.
- If your SDI is +/- 3.0 SDI or more then it is an action alert flag.

Interpretation when an analyte is reported for multiple samples in a Round:

- Reported on 2 samples:
 - Two out of two pass - Acceptable performance
 - One out of two pass - Review for random error & take action if appropriate
 - Both failed - Unacceptable performance, Review for systematic error
- Reported on 3 samples:
 - All pass - Acceptable performance
 - Two out of three pass - Review for random error & take action if appropriate
 - One out of three pass - Unacceptable performance, Review for systematic error
 - All failed - Unacceptable performance, Review for systematic error



Lab : 1034

Cycle No : 230310

Lab Name : KRSNAA DIAGNOSTICS LTD, BATALA

Sample No : 04

Report Date : 19/12/2023

Sample Date : 07/10/2023

Haematology - CBC, RDW CV%, %

Comparative Statistics

	N	Mean	SD	CV%	Excluded
All Methods	158	26.95	6.65	24.67	22
Calculated - (Your Method)	143	26.58	6.59	24.77	21
Horiba Yumizen H550 - (Your Analyzer)	46	22.46	2.86	12.72	6

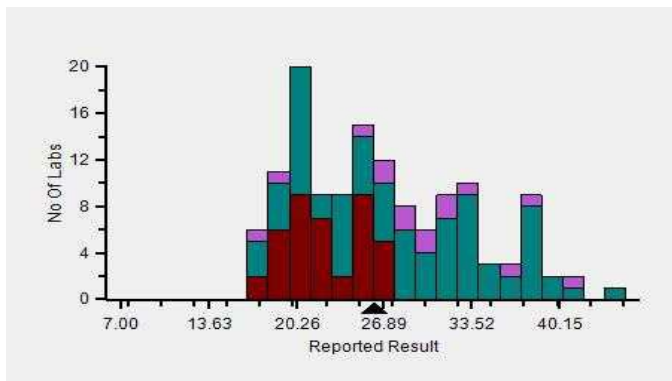
Evaluation Based On - Equipment wise Peer Grouping

Your Result	26.20	SDI / z-Score	1.36
Assigned Value	21.81	Average SDI	1.41
SDPA	3.229	Uncertainty of AV	0.53
Standard Unit Result Val	26.20	%DEV	16.66

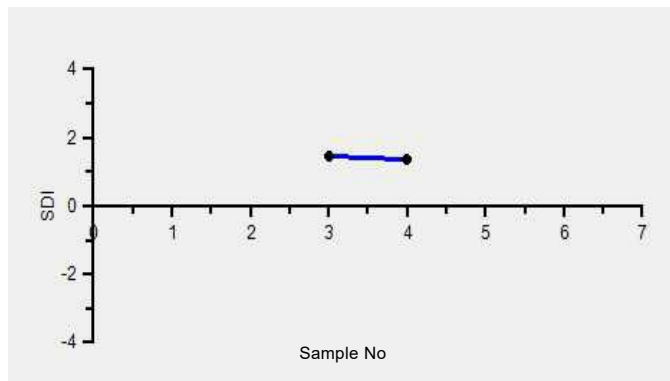
Note : # - Not evaluated / Bimodal distribution

X : SDI more than 4

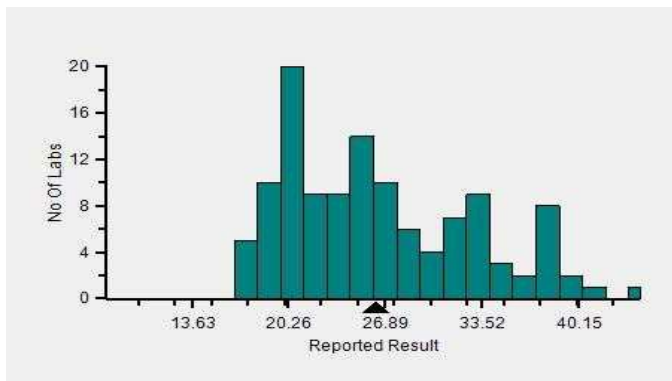
Frequency Histogram



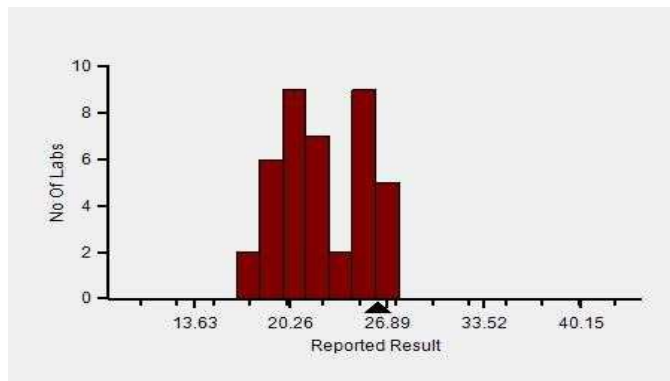
Z-Score Trend - Within Round



Frequency Histogram Your Method



Frequency Histogram Your Analyzer



Lab : 1034

Cycle No : 230310

Lab Name : KRSNAA DIAGNOSTICS LTD, BATALA

Sample No : 04

Report Date : 19/12/2023

Sample Date : 07/10/2023

Frequency Histogram Your Method



Note : SDI with * marked are not considered for evaluation

Comments :

Haematology - CBC, RDW CV%		N	Mean	SD	CV%	Excluded
	All Analyzer	158	26.95	6.65	24.67	22
Your Analyzer :	Horiba Yumizen H550	46	22.46	2.86	12.72	6
	Horiba Yumizen H500	18	20.56	2.30	11.18	-
	Horiba Yumizen H500	18	20.56	2.30	11.18	-
	Erba ELite 580	13	31.88	2.24	7.02	1
	Mindray BC-5000	11	35.84	3.80	10.60	1
	Horiba ABX Pentra XL 80	8	22.44	2.14	9.54	-
	Nihon Kohden Celltac Alpha	6	32.60	5.37	16.46	-
	Beckman Coulter DxH 560	5	28.45	3.66	12.87	1

Remarks: Interpretation of your reports

- a) If your SDI lies between +/- 2.0 SDI then your results are well within limits.
- b) If your SDI lies between +/-2.0 to 2.99 SDI then it is a warning alert flag.
- c) If your SDI is +/- 3.0 SDI or more then it is an action alert flag.

Interpretation when an analyte is reported for multiple samples in a Round:

- a) Reported on 2 samples:
 - Two out of two pass - Acceptable performance
 - One out of two pass - Review for random error & take action if appropriate
 - Both failed - Unacceptable performance, Review for systematic error
- b) Reported on 3 samples:
 - All pass - Acceptable performance
 - Two out of three pass - Review for random error & take action if appropriate
 - One out of three pass - Unacceptable performance, Review for systematic error
 - All failed - Unacceptable performance, Review for systematic error



Lab : 1034

Cycle No : 230310

Lab Name : KRSNAA DIAGNOSTICS LTD, BATALA

Sample No : 04

Report Date : 19/12/2023

Sample Date : 07/10/2023

Haematology - CBC, Total Leucocytes (WBC) count, / μ l

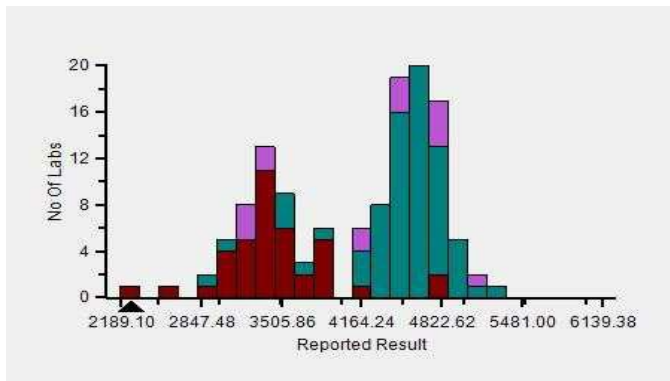
Comparative Statistics

	N	Mean	SD	CV%	Excluded
All Methods	169	4,164.24	658.38	15.81	37
Impedance - (Your Method)	145	4,150.00	663.36	15.99	33
Horiba Yumizen H550 - (Your Analyzer)	46	3,456.41	469.38	13.58	6

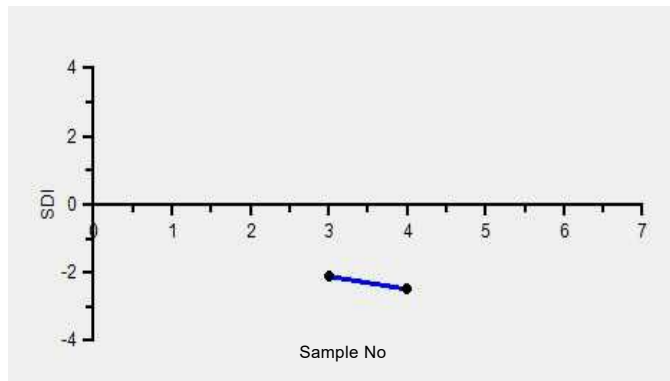
Your Result	2.28	SDI / z-Score	-2.49
Assigned Value	3,456.87	Average SDI	-2.30
SDPA	473.000	Uncertainty of AV	82.27
Standard Unit Result Val	2,280.00	%DEV	-34.04

Note : # - Not evaluated / Bimodal distribution
X : SDI more than 4

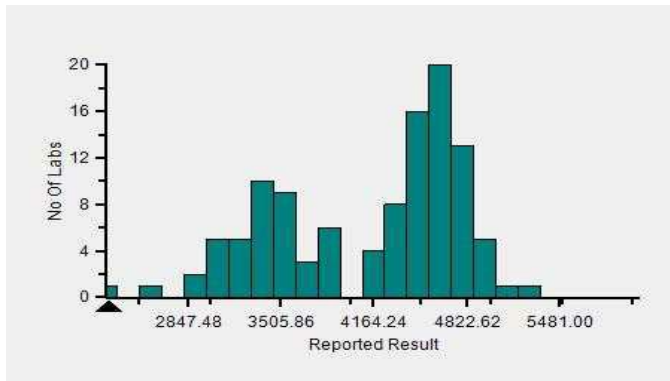
Frequency Histogram



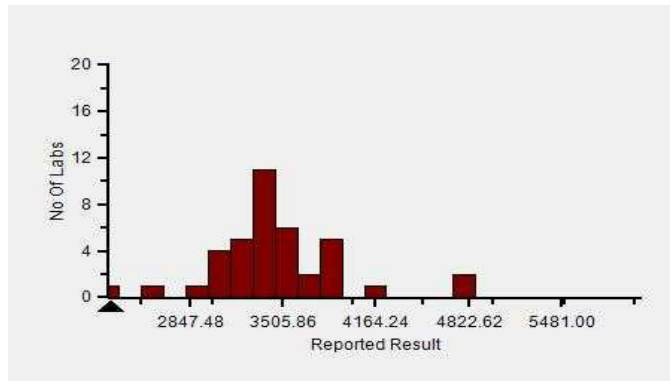
Z-Score Trend - Within Round



Frequency Histogram Your Method



Frequency Histogram Your Analyzer



Lab : 1034

Cycle No : 230310

Lab Name : KRSNAA DIAGNOSTICS LTD, BATALA

Sample No : 04

Report Date : 19/12/2023

Sample Date : 07/10/2023

Frequency Histogram Your Method



Note : SDI with * marked are not considered for evaluation

Comments :

Haematology - CBC, Total Leucocytes (WBC) count						
		N	Mean	SD	CV%	Excluded
	All Analyzer	169	4,164.24	658.38	15.81	37
Your Analyzer :	Horiba Yumizen H550	46	3,456.41	469.38	13.58	6
	Horiba Yumizen H500	18	3,618.46	610.69	16.88	4
	Horiba Yumizen H500	18	3,618.46	610.69	16.88	4
	Erba ELite 580	13	4,745.00	228.72	4.82	5
	Mindray BC-5000	12	4,658.18	110.89	2.38	1
	Horiba ABX Pentra XL 80	9	4,766.67	57.74	1.21	6
	Nihon Kohden Celltac Alpha	6	4,530.00	370.14	8.17	1
	Sysmex XP-100	5	4,475.00	95.74	2.14	1

Remarks: Interpretation of your reports

- a) If your SDI lies between +/- 2.0 SDI then your results are well within limits.
- b) If your SDI lies between +/-2.0 to 2.99 SDI then it is a warning alert flag.
- c) If your SDI is +/- 3.0 SDI or more then it is an action alert flag.

Interpretation when an analyte is reported for multiple samples in a Round:

- a) Reported on 2 samples:
 - Two out of two pass - Acceptable performance
 - One out of two pass - Review for random error & take action if appropriate
 - Both failed - Unacceptable performance, Review for systematic error
- b) Reported on 3 samples:
 - All pass - Acceptable performance
 - Two out of three pass - Review for random error & take action if appropriate
 - One out of three pass - Unacceptable performance, Review for systematic error
 - All failed - Unacceptable performance, Review for systematic error

Dr Puneet Kumar Nigam

Dr Puneet Kumar Nigam
PT coordinator & Technical Manager, MHL EQAS
Unit No. 409-416.
Commercial Building - 1A
Kohinoor Mall, Kiro Road, Kurla (W),
Mumbai - 400070

This is a computer generated report hence signature is not required



PC-1022

Lab : 1034

Lab Name : KRSNAA DIAGNOSTICS LTD, BATALA

Report Date : 19/12/2023

Cycle No : 230310

Sample No : 02

Sample Date : 07/10/2023

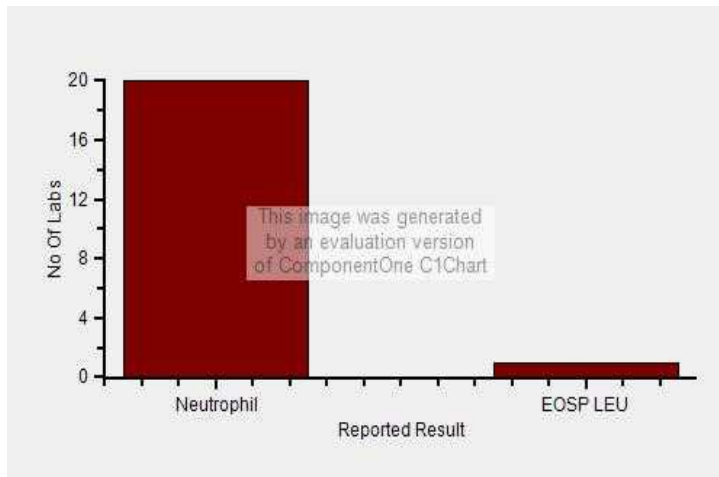
Haematology - Peripheral smear diagnosis, Diagnosis (Slide), -

	N
■ All Methods	33
■ -- (Your Method)	33
■ -- (Your Analyzer)	33

Your Result		Neutrophilic Leucocytosis
Result Expected	#	

Note : # is an indication that this parameter has not been evaluated

Frequency Histogram



Lab : 1034

Lab Name : KRSNAA DIAGNOSTICS LTD, BATALA

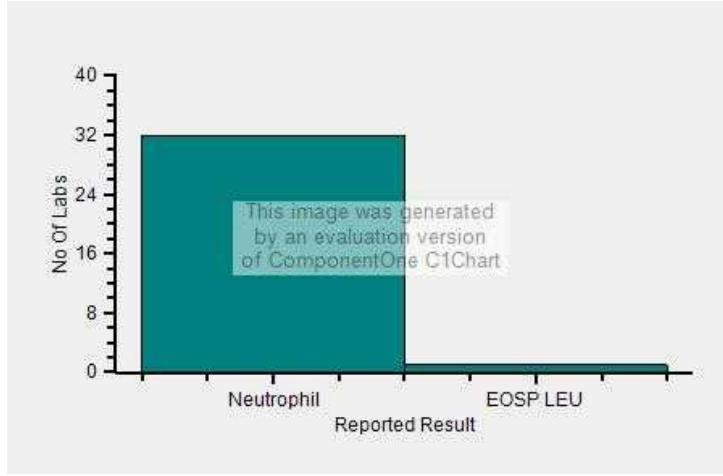
Report Date : 19/12/2023

Cycle No : 230310

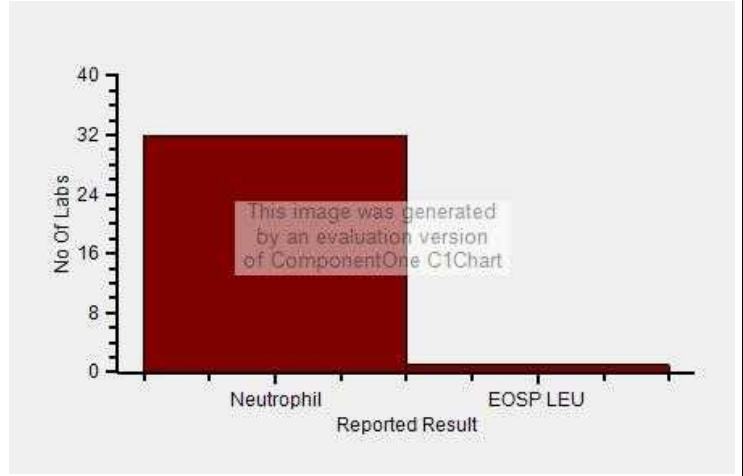
Sample No : 02

Sample Date : 07/10/2023

Frequency Histogram Your Method



Frequency Histogram Your Analyzer



Reported Results Legends :-

- Nor** : Normal
- Abn** : Abnormal
- CLL/ CLD** : CLL/Chronic lymphoproliferative disorder
- MA** : Microcytic hypochromic anaemia
- Eos** : Eosinophilia
- PV** : P. vivax
- Leu** : Leucopenia
- DIMANETH** : Dimorphic Anaemia with Thrombocytopenia
- EOSP LEU** : Eosinophilic leucocytosis
- LEUWTHRO** : Leucopenia with Thrombocytopenia

Comments :

Interpretation when an analyte is reported for multiple samples in a Round:

- a) Reported on 2 samples:
 - Two out of two pass - Acceptable performance
 - One out of two pass - Review for random error & take action if appropriate
 - Both failed - Unacceptable performance, Review for systematic error
- b) Reported on 3 samples:
 - All pass - Acceptable performance
 - Two out of three pass - Review for random error & take action if appropriate
 - One out of three pass - Unacceptable performance, Review for systematic error
 - All failed - Unacceptable performance, Review for systematic error

Dr Puneet Kumar Nigam

Dr Puneet Kumar Nigam
PT coordinator & Technical Manager, MHL EQAS
Unit No. 409-416.
Commercial Building - 1A
Kohinoor Mall, Kiro Road, Kurla (W),
Mumbai - 400070

This is a computer generated report hence signature is not required



PC-1022

Lab : 1034

Lab Name : KRSNAA DIAGNOSTICS LTD, BATALA

Report Date : 19/12/2023

Cycle No : 230310

Sample No : 02

Sample Date : 07/10/2023

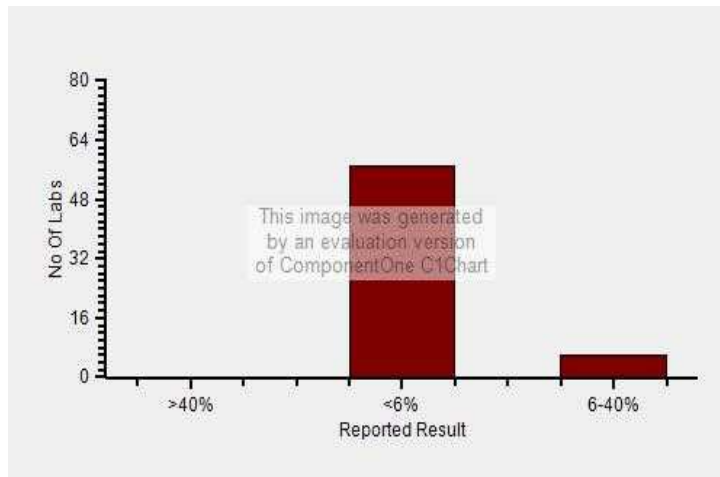
Haematology-PS Slide Count Qualitative, Eosinophil., -

	N
■ All Methods	63
■ Microscopy - (Your Method)	63
■ - - (Your Analyzer)	63

Your Result	6-40%
Result Expected	<6%

Note : # is an indication that this parameter has not been evaluated

Frequency Histogram



Lab : 1034

Lab Name : KRSNAA DIAGNOSTICS LTD, BATALA

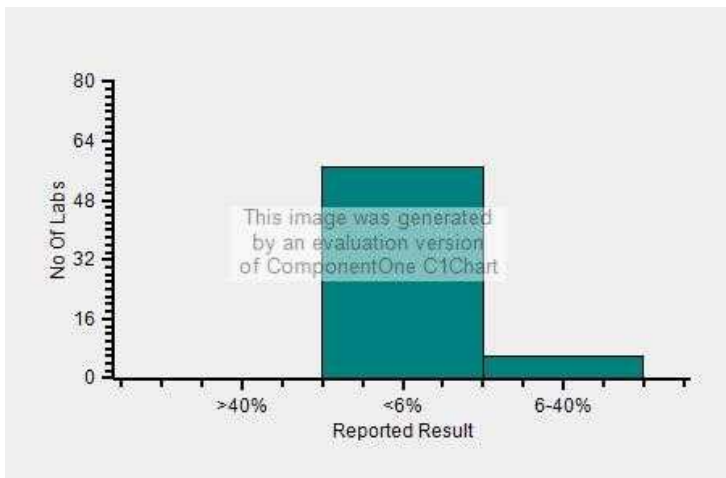
Report Date : 19/12/2023

Cycle No : 230310

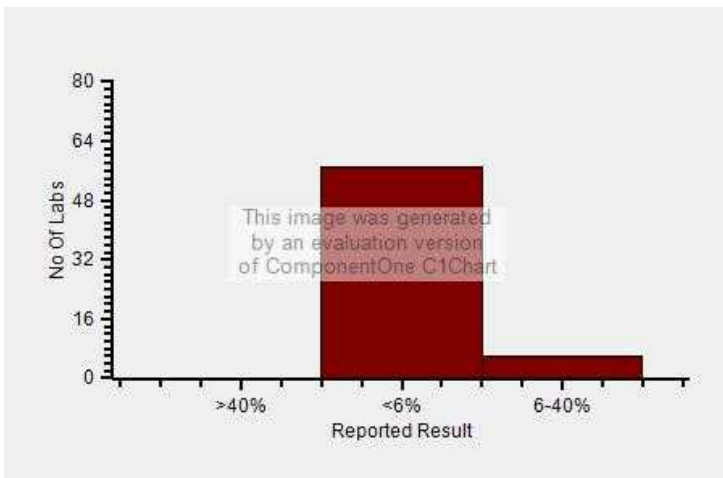
Sample No : 02

Sample Date : 07/10/2023

Frequency Histogram Your Method



Frequency Histogram Your Analyzer



Reported Results Legends :-

>40%	: >40%
<10%	: <10%
<6%	: <6%
<1%	: <1%
6-40%	: 6-40%
1-6%	: 1-6%
>6%	: >6%

Comments :

Interpretation when an analyte is reported for multiple samples in a Round:

a) Reported on 2 samples:

- Two out of two pass - Acceptable performance
- One out of two pass - Review for random error & take action if appropriate
- Both failed - Unacceptable performance, Review for systematic error

b) Reported on 3 samples:

- All pass - Acceptable performance
- Two out of three pass - Review for random error & take action if appropriate
- One out of three pass - Unacceptable performance, Review for systematic error
- All failed - Unacceptable performance, Review for systematic error



Lab : 1034

Lab Name : KRSNAA DIAGNOSTICS LTD, BATALA

Report Date : 19/12/2023

Cycle No : 230310

Sample No : 02

Sample Date : 07/10/2023

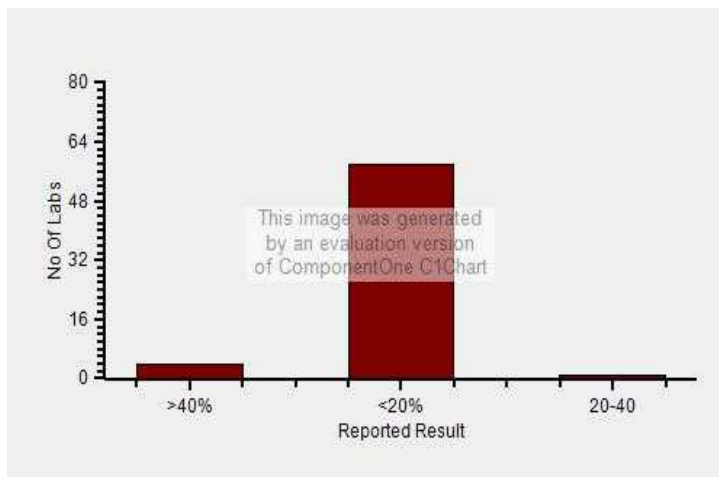
Haematology-PS Slide Count Qualitative, Lymphocyte., -

	N
■ All Methods	63
■ Microscopy - (Your Method)	63
■ - - (Your Analyzer)	63

<table border="0" style="width: 100%;"> <tr> <td style="width: 60%;">Your Result</td> <td style="text-align: right;"><20%</td> </tr> <tr> <td>Result Expected</td> <td style="text-align: right;"><20%</td> </tr> </table>	Your Result	<20%	Result Expected	<20%
Your Result	<20%			
Result Expected	<20%			

Note : # is an indication that this parameter has not been evaluated

Frequency Histogram



Lab : 1034

Cycle No : 230310

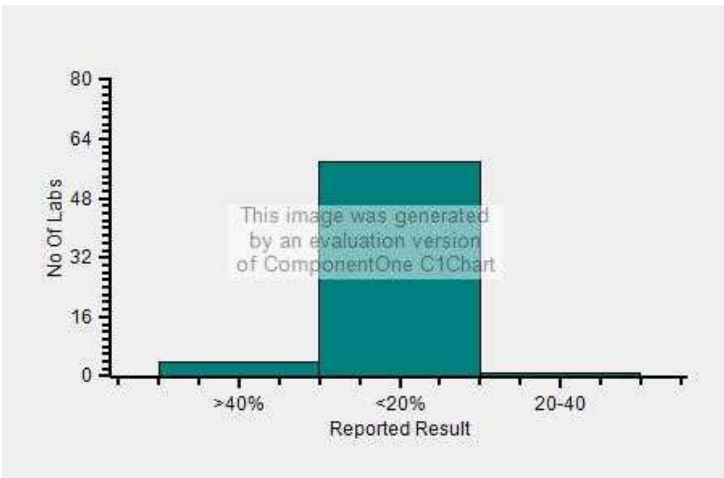
Lab Name : KRSNAA DIAGNOSTICS LTD, BATALA

Sample No : 02

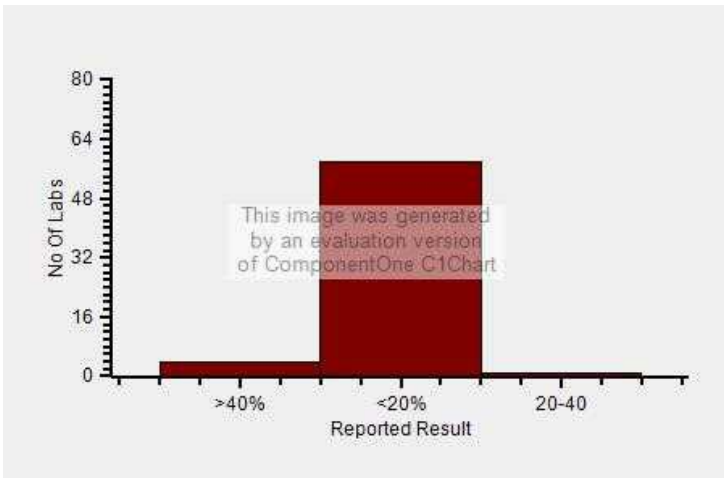
Report Date : 19/12/2023

Sample Date : 07/10/2023

Frequency Histogram Your Method



Frequency Histogram Your Analyzer



Reported Results Legends :-

>40%	: >40%
<20%	: <20%
20-30%	: 20-30%
>25%	: >25%
20-40	: 20-40%
<25%	: <25%
25-50%	: 25-50%

Comments :

Interpretation when an analyte is reported for multiple samples in a Round:

a) Reported on 2 samples:

- Two out of two pass - Acceptable performance
- One out of two pass - Review for random error & take action if appropriate
- Both failed - Unacceptable performance, Review for systematic error

b) Reported on 3 samples:

- All pass - Acceptable performance
- Two out of three pass - Review for random error & take action if appropriate
- One out of three pass - Unacceptable performance, Review for systematic error
- All failed - Unacceptable performance, Review for systematic error



Lab : 1034

Lab Name : KRSNAA DIAGNOSTICS LTD, BATALA

Report Date : 19/12/2023

Cycle No : 230310

Sample No : 02

Sample Date : 07/10/2023

Haematology-PS Slide Count Qualitative, Neutrophil., -

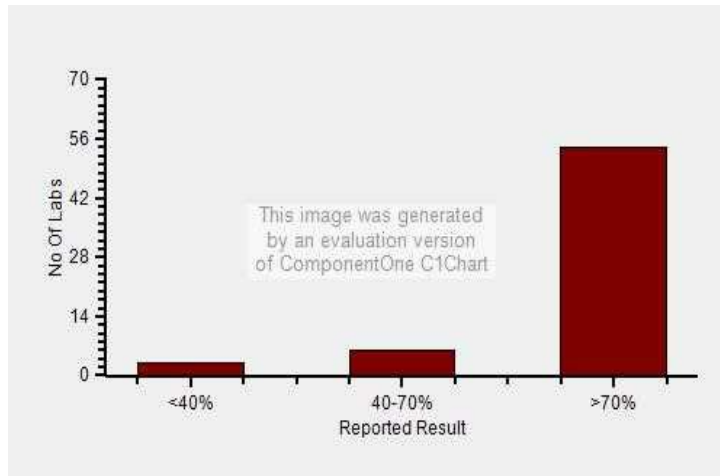
- All Methods
- Microscopy - (Your Method)
- - - (Your Analyzer)

N
63
63
63

Your Result	>70%
Result Expected	>70%

Note : # is an indication that this parameter has not been evaluated

Frequency Histogram



Lab : 1034

Lab Name : KRSNAA DIAGNOSTICS LTD, BATALA

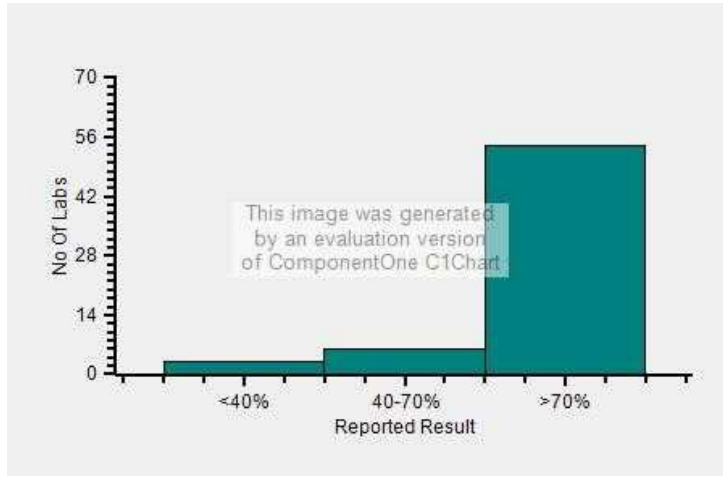
Report Date : 19/12/2023

Cycle No : 230310

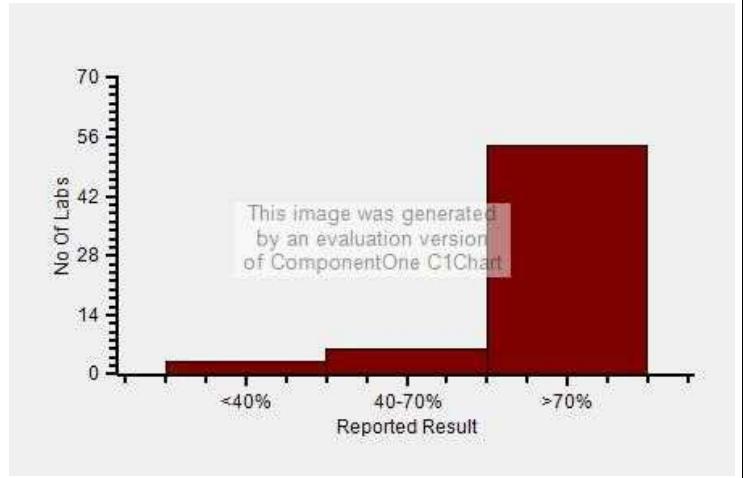
Sample No : 02

Sample Date : 07/10/2023

Frequency Histogram Your Method



Frequency Histogram Your Analyzer



Reported Results Legends :-

- 60-80%** : 60-80%
- <40%** : <40%
- 40-70%** : 40-70%
- >70%** : >70%

Comments :

Interpretation when an analyte is reported for multiple samples in a Round:

a) Reported on 2 samples:

- Two out of two pass - Acceptable performance
- One out of two pass - Review for random error & take action if appropriate
- Both failed - Unacceptable performance, Review for systematic error

b) Reported on 3 samples:

- All pass - Acceptable performance
- Two out of three pass - Review for random error & take action if appropriate
- One out of three pass - Unacceptable performance, Review for systematic error
- All failed - Unacceptable performance, Review for systematic error

Dr Puneet Kumar Nigam

Dr Puneet Kumar Nigam
PT coordinator & Technical Manager, MHL EQAS
Unit No. 409-416.
Commercial Building - 1A
Kohinoor Mall, Kiro Road, Kurla (W),
Mumbai - 400070

This is a computer generated report hence signature is not required



PC-1022