

Lab : 1052

Cycle No : 230310

Lab Name : KRSNAA DIAGNOSTICS LTD, PATHANKOT

Sample No : 01

Report Date : 19/12/2023

Sample Date : 25/11/2023

Biochemistry, Albumin, g/L

Comparative Statistics

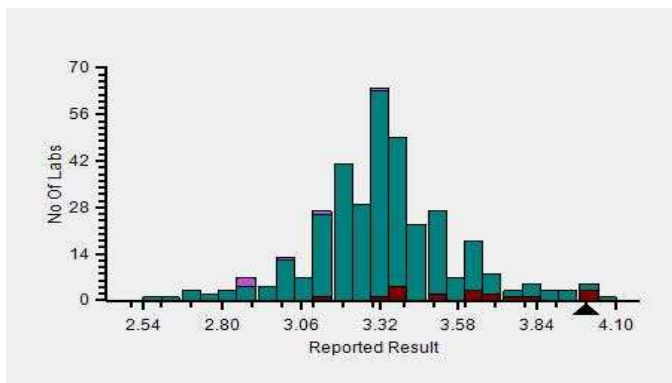
	N	Mean	SD	CV%	Excluded
All Methods	369	3.32	0.26	7.95	11
Bromocresol Green (BCG) - (Your Method)	364	3.33	0.26	7.87	10
Diasys 200 Pro - (Your Analyzer)	22	3.60	0.25	7.01	4

Your Result	4.00	SDI / z-Score	1.88
Assigned Value	3.29	Average SDI	1.95
SDPA	0.380	Uncertainty of AV	0.03
Standard Unit Result Val	4.00	%DEV	11.23

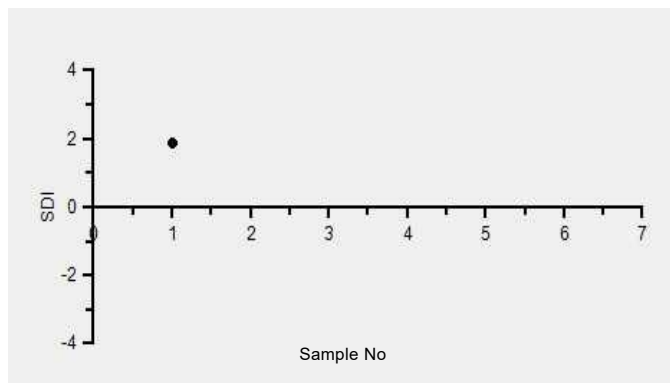
Note : # - Not evaluated / Bimodal distribution

X : SDI more than 4

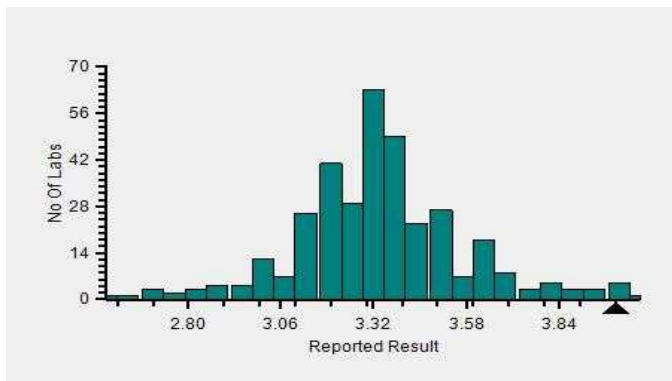
Frequency Histogram



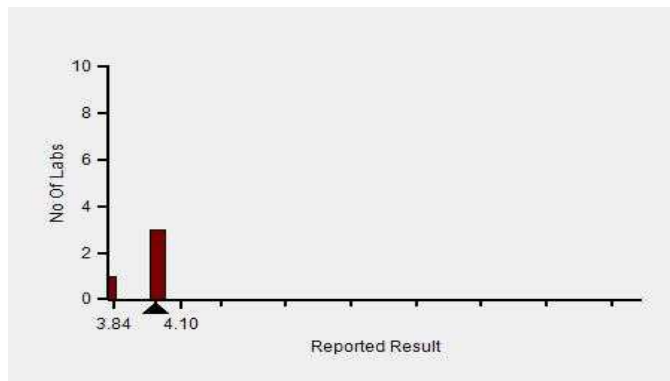
Z-Score Trend - Within Round



Frequency Histogram Your Method



Frequency Histogram Your Analyzer



Lab : 1052

Cycle No : 230310

Lab Name : KRSNAA DIAGNOSTICS LTD, PATHANKOT

Sample No : 01

Report Date : 19/12/2023

Sample Date : 25/11/2023

Frequency Histogram Your Method



Note : SDI with * marked are not considered for evaluation

Comments :

Biochemistry, Albumin		N	Mean	SD	CV%	Excluded
	All Analyzer	369	3.32	0.26	7.95	11
Your Analyzer :	Diasys 200 Pro	22	3.60	0.25	7.01	4
	Erba EM 200	40	3.36	0.24	7.03	-
	Roche cobas c 311	37	3.27	0.16	4.90	-
	Fuji Dri-Chem NX500/i	33	3.48	0.30	8.56	-
	Roche cobas c 111	22	3.36	0.27	7.89	2
	ERBA XL-640	20	3.29	0.22	6.53	-
	Roche cobas 6000	12	3.24	0.14	4.32	-
	Roche cobas INTEGRA	12	3.32	0.27	8.22	-

Remarks: Interpretation of your reports

- a) If your SDI lies between +/- 2.0 SDI then your results are well within limits.
- b) If your SDI lies between +/-2.0 to 2.99 SDI then it is a warning alert flag.
- c) If your SDI is +/- 3.0 SDI or more then it is an action alert flag.

Interpretation when an analyte is reported for multiple samples in a Round:

- a) Reported on 2 samples:
 - Two out of two pass - Acceptable performance
 - One out of two pass - Review for random error & take action if appropriate
 - Both failed - Unacceptable performance, Review for systematic error
- b) Reported on 3 samples:
 - All pass - Acceptable performance
 - Two out of three pass - Review for random error & take action if appropriate
 - One out of three pass - Unacceptable performance, Review for systematic error
 - All failed - Unacceptable performance, Review for systematic error



Lab : 1052

Cycle No : 230310

Lab Name : KRSNAA DIAGNOSTICS LTD, PATHANKOT

Sample No : 01

Report Date : 19/12/2023

Sample Date : 25/11/2023

Biochemistry, ALP, U/L

Comparative Statistics

	N	Mean	SD	CV%	Excluded
All Methods	364	46.31	10.57	22.82	9
IFCC - (Your Method)	70	44.36	7.81	17.61	1
Diasys 200 Pro - (Your Analyzer)	22	43.12	6.70	15.53	1

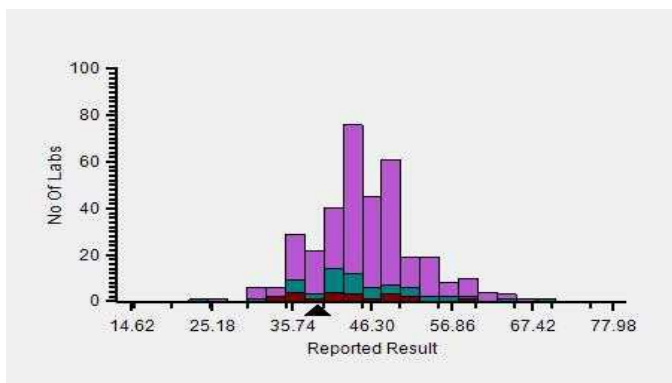
Evaluation Based On - Method wise Peer Grouping

Your Result	39.18	SDI / z-Score	-0.73
Assigned Value	45.29	Average SDI	-1.25
SDPA	8.330	Uncertainty of AV	0.41
Standard Unit Result Val	39.18	%DEV	-9.14

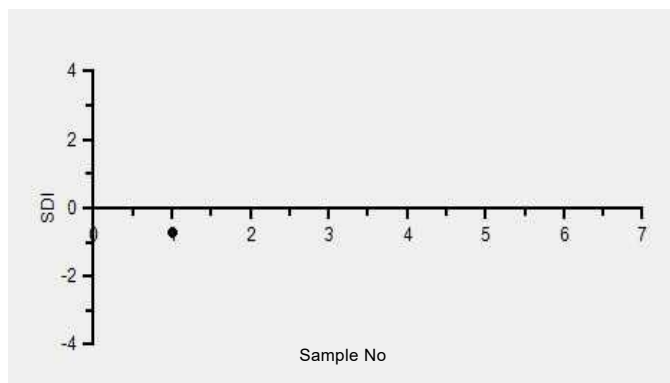
Note : # - Not evaluated / Bimodal distribution

X : SDI more than 4

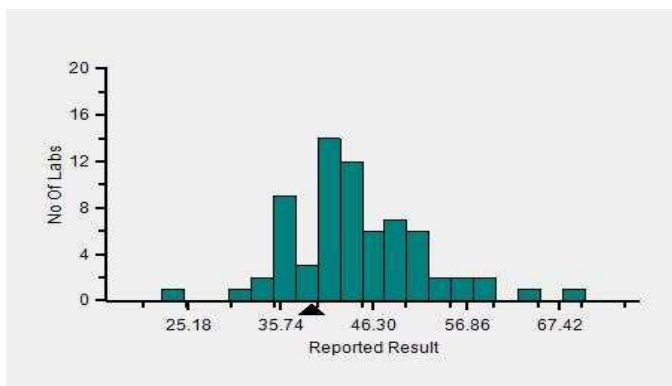
Frequency Histogram



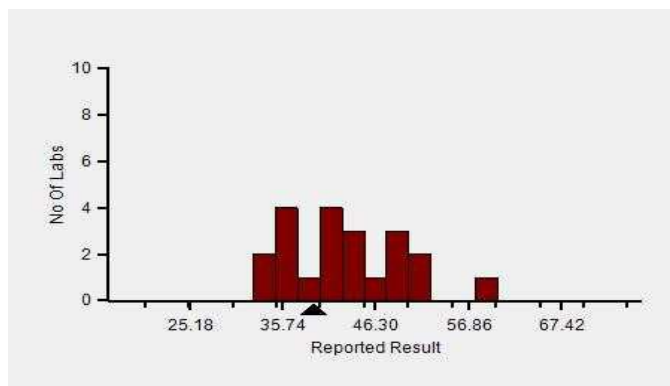
Z-Score Trend - Within Round



Frequency Histogram Your Method



Frequency Histogram Your Analyzer



Lab : 1052

Cycle No : 230310

Lab Name : KRSNAA DIAGNOSTICS LTD, PATHANKOT

Sample No : 01

Report Date : 19/12/2023

Sample Date : 25/11/2023

Frequency Histogram Your Method



Note : SDI with * marked are not considered for evaluation

Comments :

Biochemistry, ALP		N	Mean	SD	CV%	Excluded
	All Analyzer	364	46.31	10.57	22.82	9
Your Analyzer :	Diasys 200 Pro	22	43.12	6.70	15.53	1
	Erba EM 200	37	46.53	7.86	16.89	2
	Roche cobas c 311	36	45.77	3.84	8.40	-
	Fuji Dri-Chem NX500/i	31	49.00	6.28	12.82	-
	Roche cobas c 111	23	42.65	3.58	8.38	1
	ERBA XL-640	21	45.90	6.48	14.12	1
	Roche cobas 6000	12	46.12	3.21	6.96	-
	Roche cobas INTEGRA	12	47.25	5.81	12.29	-

Remarks: Interpretation of your reports

- If your SDI lies between +/- 2.0 SDI then your results are well within limits.
- If your SDI lies between +/-2.0 to 2.99 SDI then it is a warning alert flag.
- If your SDI is +/- 3.0 SDI or more then it is an action alert flag.

Interpretation when an analyte is reported for multiple samples in a Round:

a) Reported on 2 samples:

- Two out of two pass - Acceptable performance
- One out of two pass - Review for random error & take action if appropriate
- Both failed - Unacceptable performance, Review for systematic error

b) Reported on 3 samples:

- All pass - Acceptable performance
- Two out of three pass - Review for random error & take action if appropriate
- One out of three pass - Unacceptable performance, Review for systematic error
- All failed - Unacceptable performance, Review for systematic error



Lab : 1052

Cycle No : 230310

Lab Name : KRSNAA DIAGNOSTICS LTD, PATHANKOT

Sample No : 01

Report Date : 19/12/2023

Sample Date : 25/11/2023

Biochemistry, ALT, U/L

Comparative Statistics

	N	Mean	SD	CV%	Excluded
All Methods	369	15.64	3.33	21.32	12
IFCC - (Your Method)	76	15.00	3.98	26.52	6
Diasys 200 Pro - (Your Analyzer)	22	13.60	2.91	21.38	1

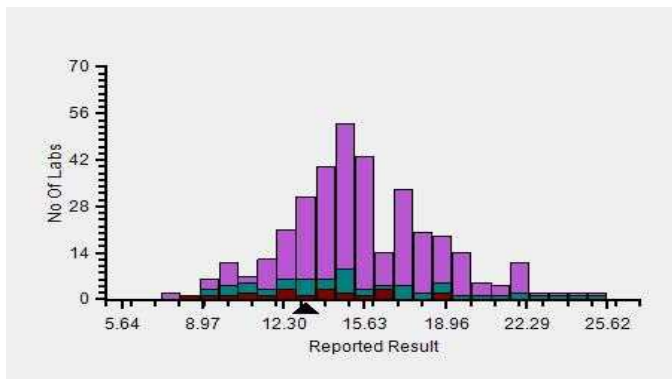
Evaluation Based On - Equipment wise Peer Grouping

Your Result	13.20	SDI / z-Score	-0.16
Assigned Value	13.64	Average SDI	-0.16
SDPA	2.809	Uncertainty of AV	0.69
Standard Unit Result Val	13.20	%DEV	-2.94

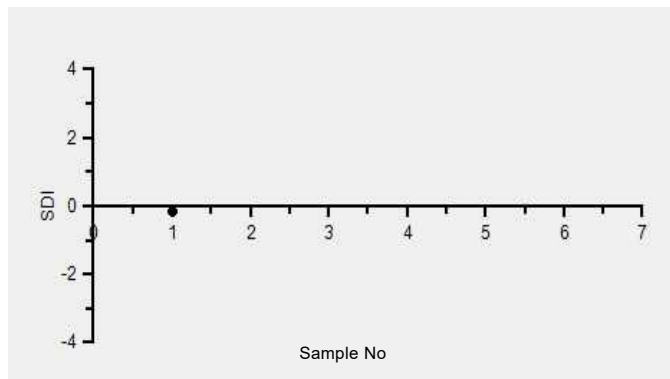
Note : # - Not evaluated / Bimodal distribution

X : SDI more than 4

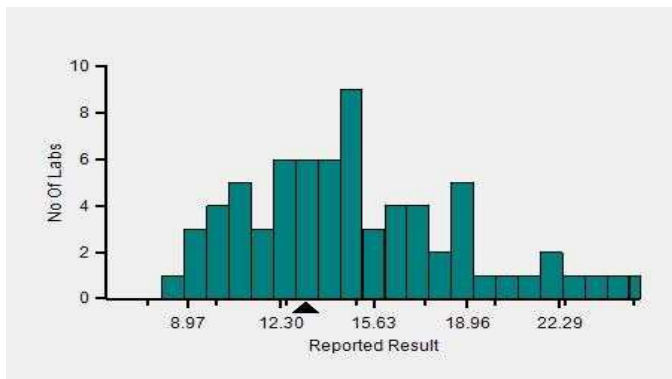
Frequency Histogram



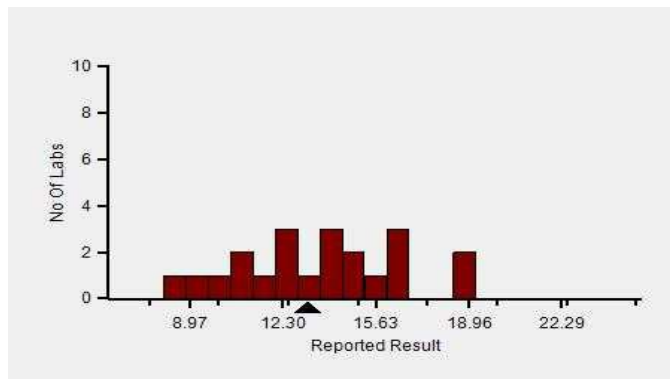
Z-Score Trend - Within Round



Frequency Histogram Your Method



Frequency Histogram Your Analyzer



Lab : 1052

Cycle No : 230310

Lab Name : KRSNAA DIAGNOSTICS LTD, PATHANKOT

Sample No : 01

Report Date : 19/12/2023

Sample Date : 25/11/2023

Frequency Histogram Your Method



Note : SDI with * marked are not considered for evaluation

Comments :

Biochemistry, ALT		N	Mean	SD	CV%	Excluded
	All Analyzer	369	15.64	3.33	21.32	12
Your Analyzer :	Diasys 200 Pro	22	13.60	2.91	21.38	1
	Erba EM 200	41	14.34	3.58	24.93	1
	Roche cobas c 311	37	17.50	2.13	12.18	-
	Fuji Dri-Chem NX500/i	30	16.07	1.76	10.95	-
	Roche cobas c 111	23	15.44	1.97	12.78	-
	ERBA XL-640	21	17.48	4.57	26.12	1
	Roche cobas 6000	12	16.94	1.81	10.70	-
	Roche cobas INTEGRA	12	13.68	1.70	12.45	-

Remarks: Interpretation of your reports

- a) If your SDI lies between +/- 2.0 SDI then your results are well within limits.
- b) If your SDI lies between +/-2.0 to 2.99 SDI then it is a warning alert flag.
- c) If your SDI is +/- 3.0 SDI or more then it is an action alert flag.

Interpretation when an analyte is reported for multiple samples in a Round:

- a) Reported on 2 samples:
 - Two out of two pass - Acceptable performance
 - One out of two pass - Review for random error & take action if appropriate
 - Both failed - Unacceptable performance, Review for systematic error
- b) Reported on 3 samples:
 - All pass - Acceptable performance
 - Two out of three pass - Review for random error & take action if appropriate
 - One out of three pass - Unacceptable performance, Review for systematic error
 - All failed - Unacceptable performance, Review for systematic error



Lab : 1052

Cycle No : 230310

Lab Name : KRSNAA DIAGNOSTICS LTD, PATHANKOT

Sample No : 01

Report Date : 19/12/2023

Sample Date : 25/11/2023

Biochemistry, AST, U/L

Comparative Statistics

	N	Mean	SD	CV%	Excluded
All Methods	365	26.83	4.47	16.65	15
IFCC - (Your Method)	75	25.78	5.29	20.52	5
Diasys 200 Pro - (Your Analyzer)	22	26.37	4.10	15.53	1

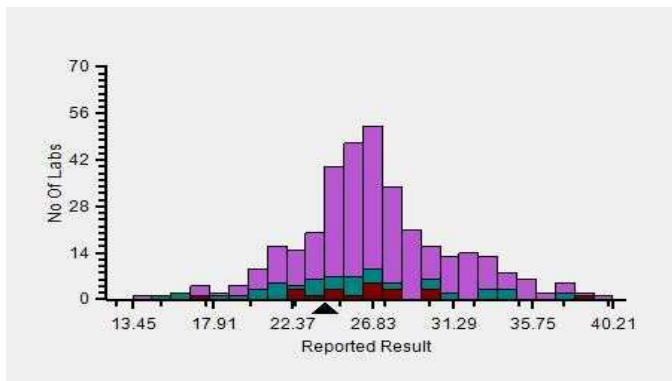
Evaluation Based On - Equipment wise Peer Grouping

Your Result	24.16	SDI / z-Score	-0.34
Assigned Value	25.76	Average SDI	-0.39
SDPA	4.660	Uncertainty of AV	0.88
Standard Unit Result Val	24.16	%DEV	-8.36

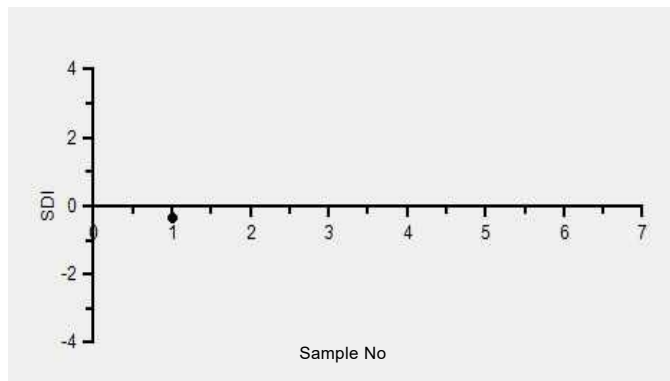
Note : # - Not evaluated / Bimodal distribution

X : SDI more than 4

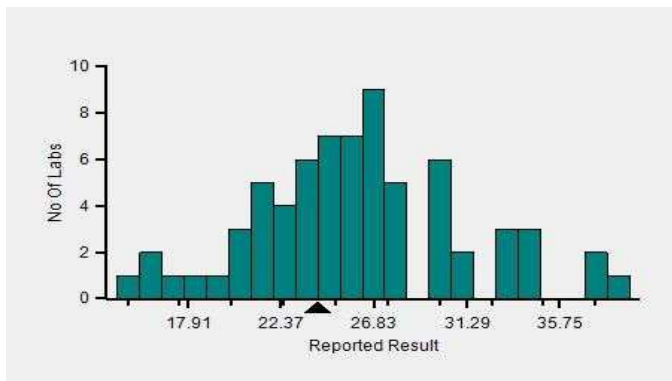
Frequency Histogram



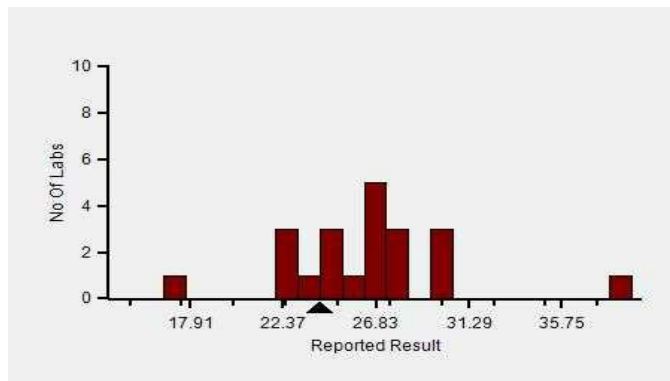
Z-Score Trend - Within Round



Frequency Histogram Your Method



Frequency Histogram Your Analyzer



Lab : 1052

Cycle No : 230310

Lab Name : KRSNAA DIAGNOSTICS LTD, PATHANKOT

Sample No : 01

Report Date : 19/12/2023

Sample Date : 25/11/2023

Frequency Histogram Your Method



Note : SDI with * marked are not considered for evaluation

Comments :

Biochemistry, AST		N	Mean	SD	CV%	Excluded
	All Analyzer	365	26.83	4.47	16.65	15
Your Analyzer :	Diasys 200 Pro	22	26.37	4.10	15.53	1
	Erba EM 200	40	23.55	3.89	16.51	4
	Roche cobas c 311	35	27.77	2.61	9.38	1
	Fuji Dri-Chem NX500/i	31	26.48	1.71	6.46	-
	Roche cobas c 111	22	27.06	3.04	11.22	-
	ERBA XL-640	21	24.56	5.10	20.78	1
	Roche cobas 6000	12	26.46	2.17	8.22	-
	Roche cobas INTEGRA	12	24.39	2.44	10.02	-

Remarks: Interpretation of your reports

- a) If your SDI lies between +/- 2.0 SDI then your results are well within limits.
- b) If your SDI lies between +/-2.0 to 2.99 SDI then it is a warning alert flag.
- c) If your SDI is +/- 3.0 SDI or more then it is an action alert flag.

Interpretation when an analyte is reported for multiple samples in a Round:

- a) Reported on 2 samples:
 - Two out of two pass - Acceptable performance
 - One out of two pass - Review for random error & take action if appropriate
 - Both failed - Unacceptable performance, Review for systematic error
- b) Reported on 3 samples:
 - All pass - Acceptable performance
 - Two out of three pass - Review for random error & take action if appropriate
 - One out of three pass - Unacceptable performance, Review for systematic error
 - All failed - Unacceptable performance, Review for systematic error



Lab : 1052

Cycle No : 230310

Lab Name : KRSNAA DIAGNOSTICS LTD, PATHANKOT

Sample No : 01

Report Date : 19/12/2023

Sample Date : 25/11/2023

Biochemistry, Bilirubin Total, mg/dl

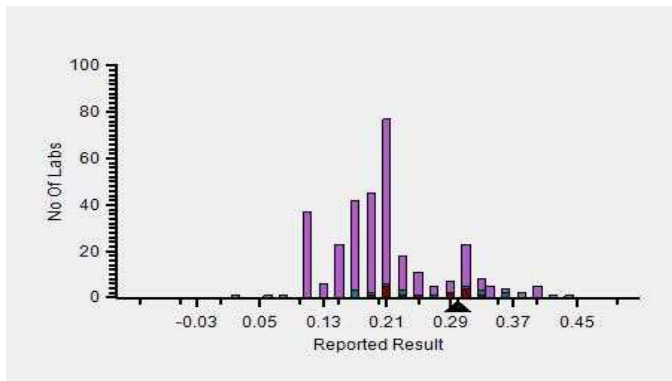
Comparative Statistics

	N	Mean	SD	CV%	Excluded
All Methods	365	0.21	0.08	39.13	37
DCA - (Your Method)	36	0.27	0.10	35.53	5
Diasys 200 Pro - (Your Analyzer)	22	0.29	0.11	37.33	4

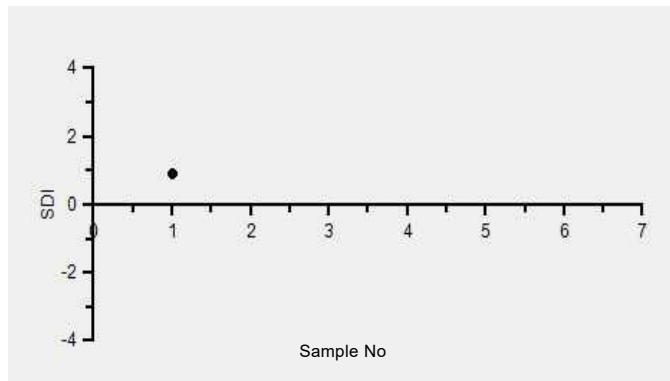
Your Result	0.30	SDI / z-Score	0.90
Assigned Value	0.21	Average SDI	0.14
SDPA	0.105	Uncertainty of AV	0.01
Standard Unit Result Val	0.30	%DEV	2.74

Note : # - Not evaluated / Bimodal distribution
X : SDI more than 4

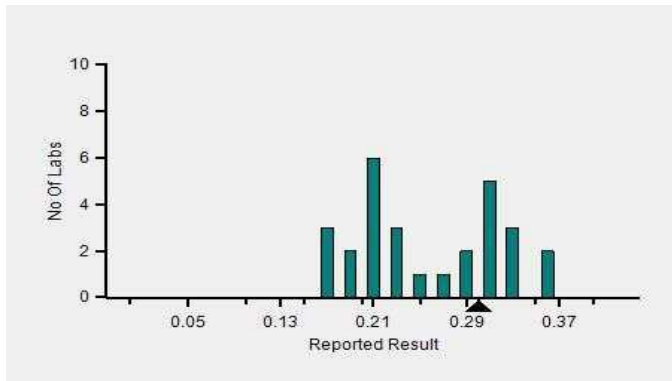
Frequency Histogram



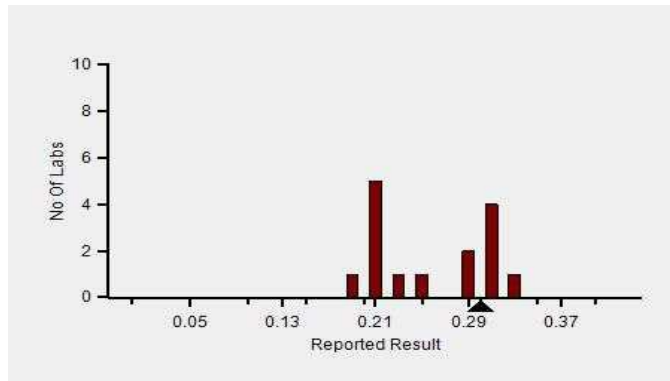
Z-Score Trend - Within Round



Frequency Histogram Your Method



Frequency Histogram Your Analyzer



Lab : 1052

Cycle No : 230310

Lab Name : KRSNAA DIAGNOSTICS LTD, PATHANKOT

Sample No : 01

Report Date : 19/12/2023

Sample Date : 25/11/2023

Frequency Histogram Your Method



Note : SDI with * marked are not considered for evaluation

Comments :

Biochemistry, Bilirubin Total		N	Mean	SD	CV%	Excluded
	All Analyzer	365	0.21	0.08	38.94	37
Your Analyzer :	Diasys 200 Pro	22	0.29	0.11	37.33	4
	Erba EM 200	39	0.19	0.04	22.28	-
	Roche cobas c 311	36	0.17	0.03	15.88	-
	Fuji Dri-Chem NX500/i	32	0.19	0.08	43.92	4
	ERBA XL-640	21	0.18	0.04	22.03	3
	Roche cobas c 111	21	0.16	0.05	33.33	-
	Roche cobas 6000	12	0.17	0.02	12.72	-
	Roche cobas INTEGRA	12	0.18	0.04	19.66	-

Remarks: Interpretation of your reports

- a) If your SDI lies between +/- 2.0 SDI then your results are well within limits.
- b) If your SDI lies between +/-2.0 to 2.99 SDI then it is a warning alert flag.
- c) If your SDI is +/- 3.0 SDI or more then it is an action alert flag.

Interpretation when an analyte is reported for multiple samples in a Round:

a) Reported on 2 samples:

- Two out of two pass - Acceptable performance
- One out of two pass - Review for random error & take action if appropriate
- Both failed - Unacceptable performance, Review for systematic error

b) Reported on 3 samples:

- All pass - Acceptable performance
- Two out of three pass - Review for random error & take action if appropriate
- One out of three pass - Unacceptable performance, Review for systematic error
- All failed - Unacceptable performance, Review for systematic error



Lab : 1052

Cycle No : 230310

Lab Name : KRSNAA DIAGNOSTICS LTD, PATHANKOT

Sample No : 01

Report Date : 19/12/2023

Sample Date : 25/11/2023

Biochemistry, Calcium, mg/dl

Comparative Statistics

	N	Mean	SD	CV%	Excluded
All Methods	313	7.08	0.53	7.41	8
Arsenazo III - (Your Method)	146	7.23	0.53	7.36	3
Diasys 200 Pro - (Your Analyzer)	21	7.36	0.57	7.75	1

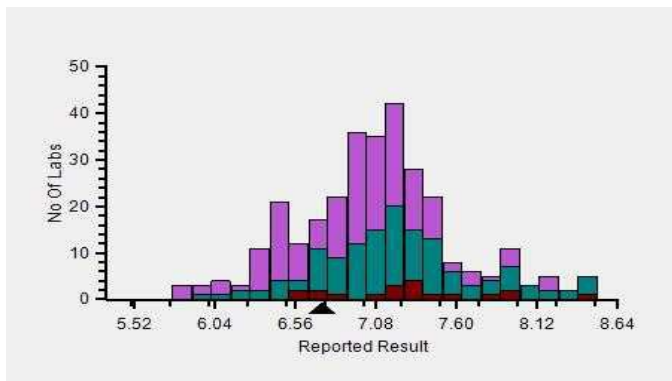
Evaluation Based On - Equipment wise Peer Grouping

Your Result	6.74	SDI / z-Score	-0.86
Assigned Value	7.15	Average SDI	-0.71
SDPA	0.480	Uncertainty of AV	0.05
Standard Unit Result Val	6.74	%DEV	-8.36

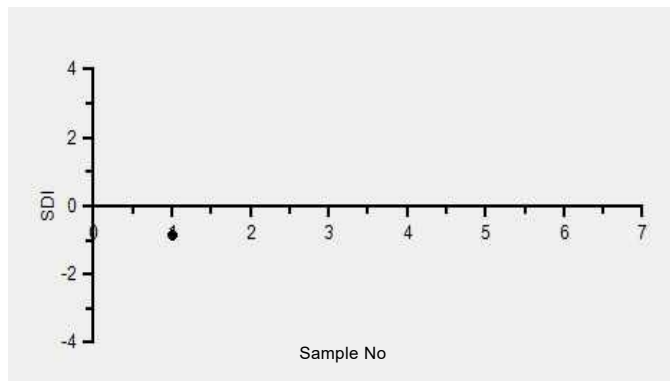
Note : # - Not evaluated / Bimodal distribution

X : SDI more than 4

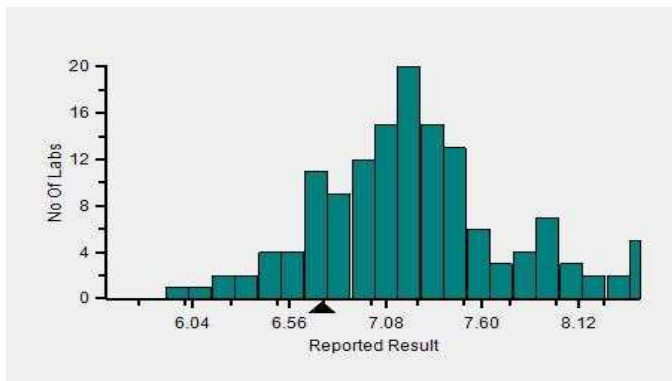
Frequency Histogram



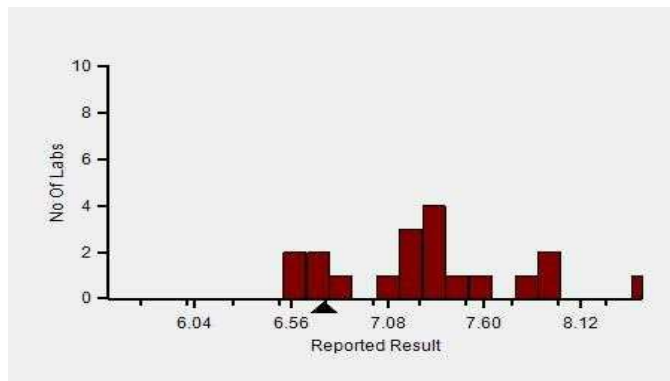
Z-Score Trend - Within Round



Frequency Histogram Your Method



Frequency Histogram Your Analyzer



Lab : 1052

Cycle No : 230310

Lab Name : KRSNAA DIAGNOSTICS LTD, PATHANKOT

Sample No : 01

Report Date : 19/12/2023

Sample Date : 25/11/2023

Frequency Histogram Your Method



Note : SDI with * marked are not considered for evaluation

Comments :

Biochemistry, Calcium		N	Mean	SD	CV%	Excluded
	All Analyzer	313	7.08	0.53	7.41	8
Your Analyzer :	Diasys 200 Pro	21	7.36	0.57	7.75	1
	Roche cobas c 311	37	7.08	0.31	4.44	-
	Erba EM 200	31	7.26	0.55	7.51	-
	Fuji Dri-Chem NX500/i	29	6.50	0.42	6.53	1
	Roche cobas c 111	17	6.95	0.42	5.98	2
	Fuji Dri-Chem NX600	13	6.37	0.34	5.39	-
	Roche cobas 6000	12	6.97	0.25	3.63	-
	Roche cobas INTEGRA	12	7.12	0.32	4.43	-

Remarks: Interpretation of your reports

- a) If your SDI lies between +/- 2.0 SDI then your results are well within limits.
- b) If your SDI lies between +/-2.0 to 2.99 SDI then it is a warning alert flag.
- c) If your SDI is +/- 3.0 SDI or more then it is an action alert flag.

Interpretation when an analyte is reported for multiple samples in a Round:

- a) Reported on 2 samples:
 - Two out of two pass - Acceptable performance
 - One out of two pass - Review for random error & take action if appropriate
 - Both failed - Unacceptable performance, Review for systematic error
- b) Reported on 3 samples:
 - All pass - Acceptable performance
 - Two out of three pass - Review for random error & take action if appropriate
 - One out of three pass - Unacceptable performance, Review for systematic error
 - All failed - Unacceptable performance, Review for systematic error



Lab : 1052

Cycle No : 230310

Lab Name : KRSNAA DIAGNOSTICS LTD, PATHANKOT

Sample No : 01

Report Date : 19/12/2023

Sample Date : 25/11/2023

Biochemistry, Chloride, mmol/L

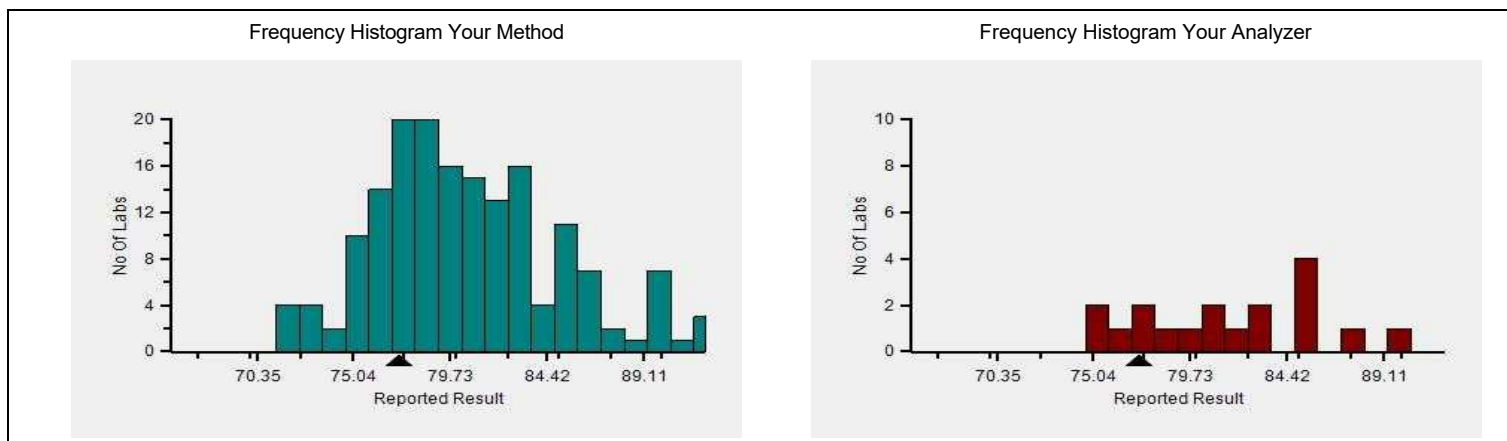
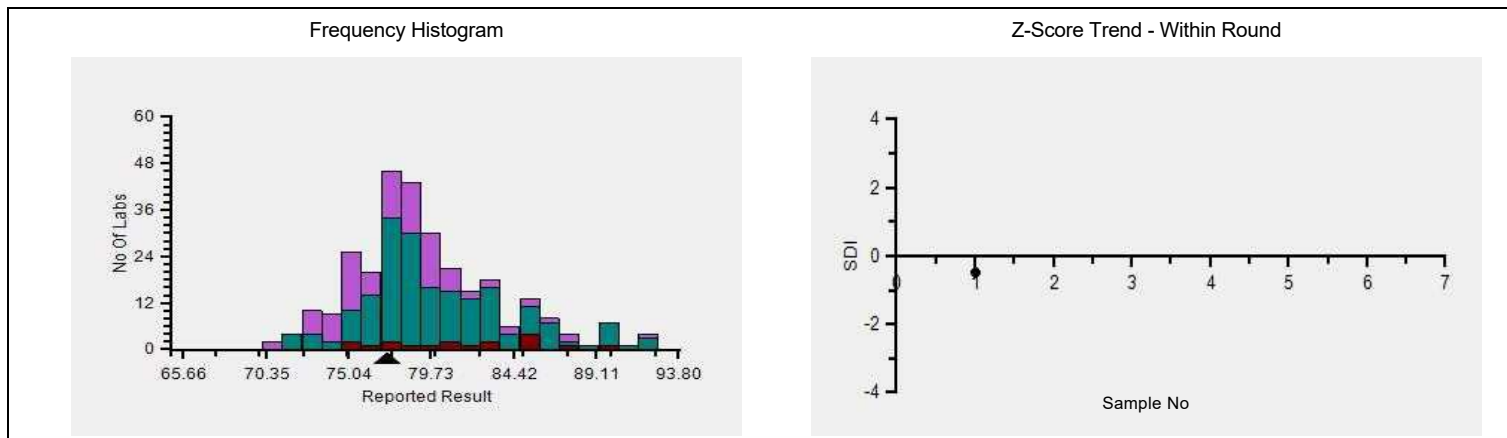
Comparative Statistics

	N	Mean	SD	CV%	Excluded
All Methods	303	79.69	4.66	5.85	12
ISE direct - (Your Method)	209	80.52	4.88	6.06	9
ACCULYTE-3P - (Your Analyzer)	20	81.59	4.28	5.25	2

Evaluation Based On - Method wise Peer Grouping			
Your Result	77.22	SDI / z-Score	-0.47
Assigned Value	79.93	Average SDI	-0.49
SDPA	5.800	Uncertainty of AV	0.36
Standard Unit Result Val	77.22	%DEV	-5.36

Note : # - Not evaluated / Bimodal distribution

X : SDI more than 4



Lab : 1052

Cycle No : 230310

Lab Name : KRSNAA DIAGNOSTICS LTD, PATHANKOT

Sample No : 01

Report Date : 19/12/2023

Sample Date : 25/11/2023

Frequency Histogram Your Method



Note : SDI with * marked are not considered for evaluation

Comments :

Biochemistry, Chloride		N	Mean	SD	CV%	Excluded
	All Analyzer	303	79.69	4.66	5.85	12
Your Analyzer :	ACCULYTE-3P	20	81.59	4.28	5.25	2
	Fuji Dri-Chem NX500/i	34	78.13	2.72	3.48	-
	Roche cobas c 311	27	77.20	3.62	4.69	-
	Fuji Dri-Chem NX600	15	77.87	1.96	2.52	-
	Fuji Dri-Chem 4000i	13	78.46	2.73	3.48	-
	Roche AVL 9180	11	80.32	7.25	9.02	-
	EasyLyte	11	79.28	4.33	5.47	-
	Sensa Core ST200 Aqua	11	85.86	6.38	7.43	1

Remarks: Interpretation of your reports

- a) If your SDI lies between +/- 2.0 SDI then your results are well within limits.
- b) If your SDI lies between +/-2.0 to 2.99 SDI then it is a warning alert flag.
- c) If your SDI is +/- 3.0 SDI or more then it is an action alert flag.

Interpretation when an analyte is reported for multiple samples in a Round:

a) Reported on 2 samples:

- Two out of two pass - Acceptable performance
- One out of two pass - Review for random error & take action if appropriate
- Both failed - Unacceptable performance, Review for systematic error

b) Reported on 3 samples:

- All pass - Acceptable performance
- Two out of three pass - Review for random error & take action if appropriate
- One out of three pass - Unacceptable performance, Review for systematic error
- All failed - Unacceptable performance, Review for systematic error



Lab : 1052

Cycle No : 230310

Lab Name : KRSNAA DIAGNOSTICS LTD, PATHANKOT

Sample No : 01

Report Date : 19/12/2023

Sample Date : 25/11/2023

Biochemistry, Cholesterol, mg/dl

Comparative Statistics

	N	Mean	SD	CV%	Excluded
All Methods	365	127.82	9.52	7.45	9
CHOD-PAP - (Your Method)	113	128.78	10.10	7.85	3
Diasys 200 Pro - (Your Analyzer)	22	130.32	6.25	4.80	1

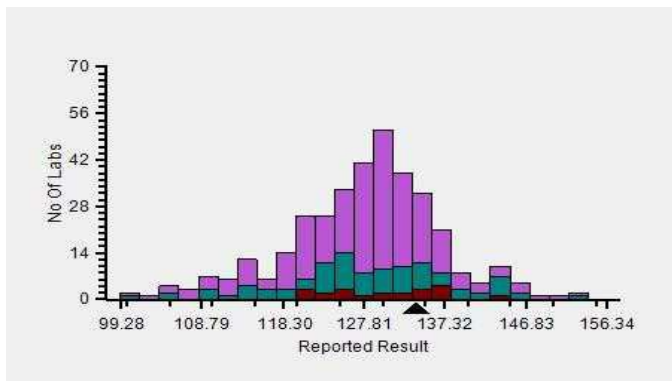
Evaluation Based On - Equipment wise Peer Grouping

Your Result	134.00	SDI / z-Score	0.31
Assigned Value	130.81	Average SDI	0.21
SDPA	10.400	Uncertainty of AV	1.03
Standard Unit Result Val	134.00	%DEV	2.82

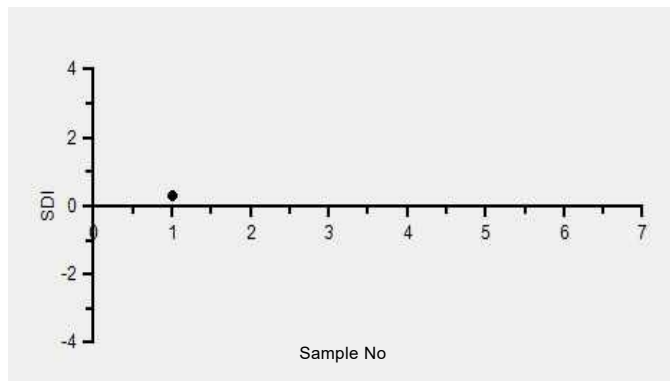
Note : # - Not evaluated / Bimodal distribution

X : SDI more than 4

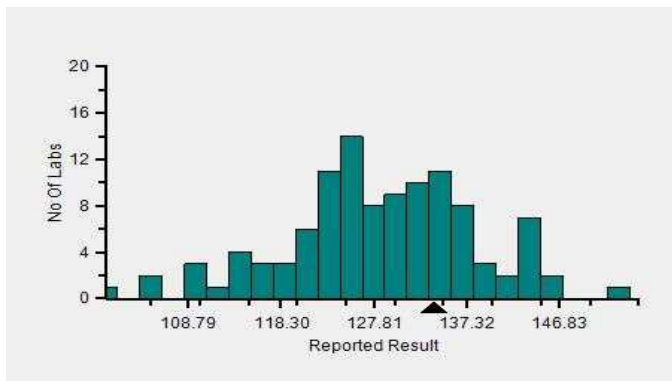
Frequency Histogram



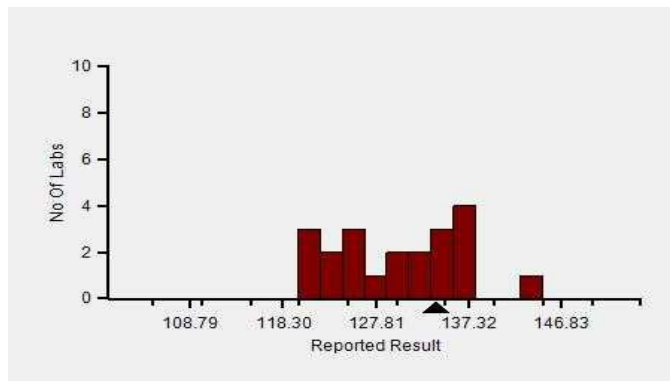
Z-Score Trend - Within Round



Frequency Histogram Your Method



Frequency Histogram Your Analyzer



Lab : 1052

Cycle No : 230310

Lab Name : KRSNAA DIAGNOSTICS LTD, PATHANKOT

Sample No : 01

Report Date : 19/12/2023

Sample Date : 25/11/2023

Frequency Histogram Your Method



Note : SDI with * marked are not considered for evaluation

Comments :

Biochemistry, Cholesterol		N	Mean	SD	CV%	Excluded
	All Analyzer	365	127.82	9.52	7.45	9
Your Analyzer :	Diasys 200 Pro	22	130.32	6.25	4.80	1
	Erba EM 200	37	126.36	12.03	9.52	1
	Roche cobas c 311	37	131.92	6.21	4.71	2
	Fuji Dri-Chem NX500/i	31	124.45	8.18	6.57	-
	Roche cobas c 111	22	130.78	7.40	5.66	2
	ERBA XL-640	21	119.83	10.50	8.76	1
	Roche cobas 6000	12	129.64	3.92	3.02	-
	Roche cobas INTEGRA	12	127.69	4.14	3.24	-

Remarks: Interpretation of your reports

- a) If your SDI lies between +/- 2.0 SDI then your results are well within limits.
- b) If your SDI lies between +/-2.0 to 2.99 SDI then it is a warning alert flag.
- c) If your SDI is +/- 3.0 SDI or more then it is an action alert flag.

Interpretation when an analyte is reported for multiple samples in a Round:

- a) Reported on 2 samples:
 - Two out of two pass - Acceptable performance
 - One out of two pass - Review for random error & take action if appropriate
 - Both failed - Unacceptable performance, Review for systematic error
- b) Reported on 3 samples:
 - All pass - Acceptable performance
 - Two out of three pass - Review for random error & take action if appropriate
 - One out of three pass - Unacceptable performance, Review for systematic error
 - All failed - Unacceptable performance, Review for systematic error



Lab : 1052

Cycle No : 230310

Lab Name : KRSNAA DIAGNOSTICS LTD, PATHANKOT

Sample No : 01

Report Date : 19/12/2023

Sample Date : 25/11/2023

Biochemistry, Creatinine, mg/dl

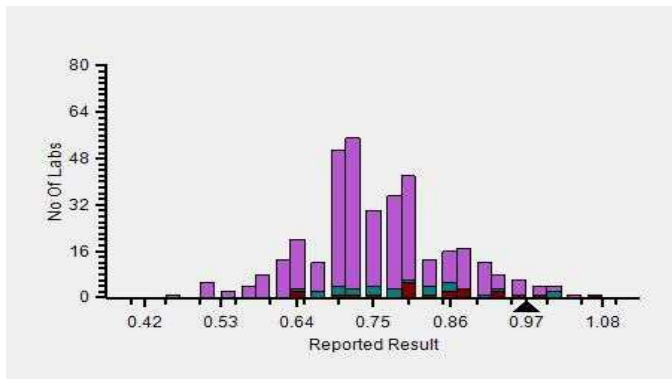
Comparative Statistics

	N	Mean	SD	CV%	Excluded
All Methods	370	0.75	0.11	14.59	5
Jaffe - Alkaline picrate - (Your Method)	48	0.82	0.11	13.62	1
Diasys 200 Pro - (Your Analyzer)	22	0.83	0.11	12.62	1

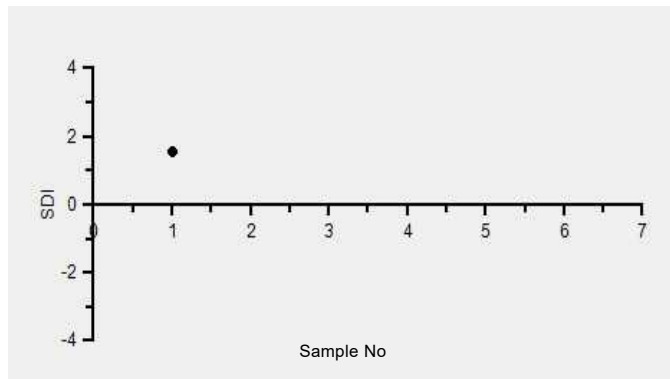
Your Result	0.97	SDI / z-Score	1.56
Assigned Value	0.78	Average SDI	0.60
SDPA	0.124	Uncertainty of AV	0.02
Standard Unit Result Val	0.97	%DEV	16.59

Note : # - Not evaluated / Bimodal distribution
X : SDI more than 4

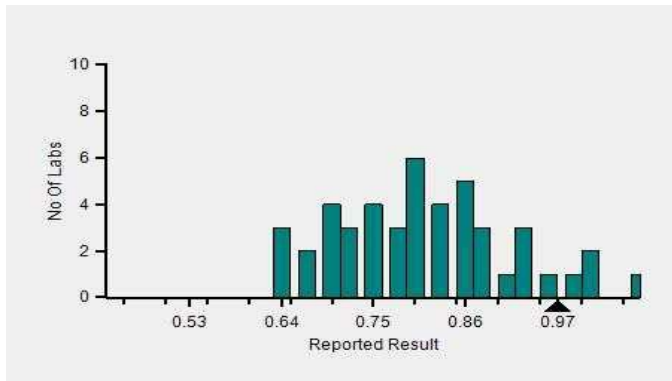
Frequency Histogram



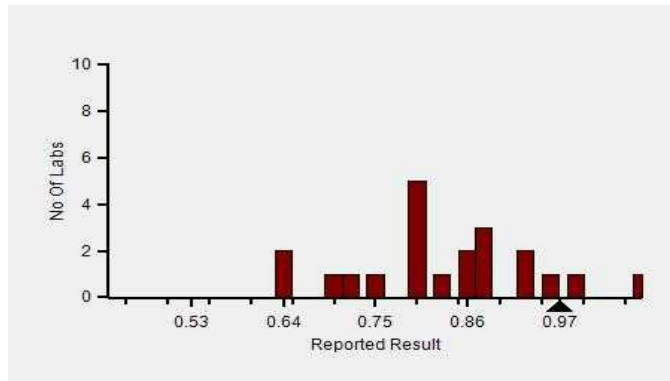
Z-Score Trend - Within Round



Frequency Histogram Your Method



Frequency Histogram Your Analyzer



Lab : 1052

Cycle No : 230310

Lab Name : KRSNAA DIAGNOSTICS LTD, PATHANKOT

Sample No : 01

Report Date : 19/12/2023

Sample Date : 25/11/2023

Frequency Histogram Your Method



Note : SDI with * marked are not considered for evaluation

Comments :

Biochemistry, Creatinine		N	Mean	SD	CV%	Excluded
	All Analyzer	370	0.75	0.11	14.59	5
Your Analyzer :	Diasys 200 Pro	22	0.83	0.11	12.62	1
	Erba EM 200	39	0.70	0.13	17.91	-
	Roche cobas c 311	37	0.74	0.06	7.88	-
	Fuji Dri-Chem NX500/i	30	0.76	0.06	8.47	-
	Roche cobas c 111	23	0.72	0.08	11.53	1
	ERBA XL-640	19	0.84	0.17	20.57	2
	Roche cobas 6000	12	0.74	0.05	6.34	-
	Roche cobas INTEGRA	12	0.74	0.12	15.68	-

Remarks: Interpretation of your reports

- a) If your SDI lies between +/- 2.0 SDI then your results are well within limits.
- b) If your SDI lies between +/-2.0 to 2.99 SDI then it is a warning alert flag.
- c) If your SDI is +/- 3.0 SDI or more then it is an action alert flag.

Interpretation when an analyte is reported for multiple samples in a Round:

- a) Reported on 2 samples:
 - Two out of two pass - Acceptable performance
 - One out of two pass - Review for random error & take action if appropriate
 - Both failed - Unacceptable performance, Review for systematic error
- b) Reported on 3 samples:
 - All pass - Acceptable performance
 - Two out of three pass - Review for random error & take action if appropriate
 - One out of three pass - Unacceptable performance, Review for systematic error
 - All failed - Unacceptable performance, Review for systematic error



Lab : 1052

Cycle No : 230310

Lab Name : KRSNAA DIAGNOSTICS LTD, PATHANKOT

Sample No : 01

Report Date : 19/12/2023

Sample Date : 25/11/2023

Biochemistry, HDL, mg/dl

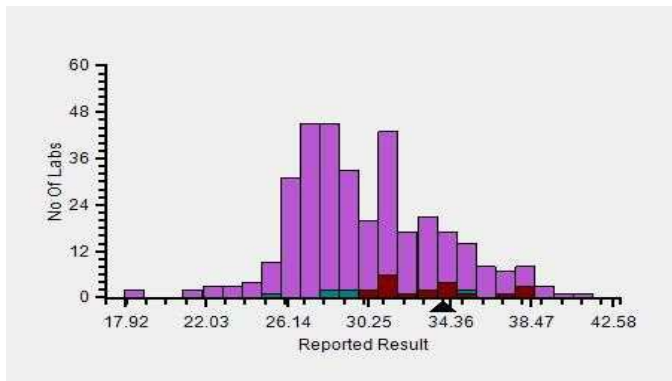
Comparative Statistics

	N	Mean	SD	CV%	Excluded
All Methods	354	30.27	4.11	13.58	11
Direct measure, immunoinhibition - (Your Method)	27	32.40	3.38	10.44	2
Diasys 200 Pro - (Your Analyzer)	22	33.30	2.77	8.33	2

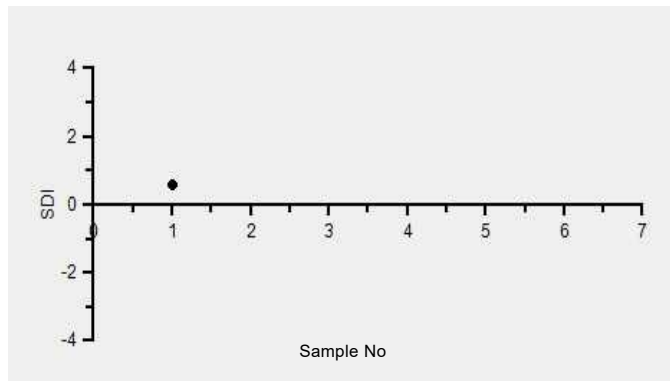
Your Result	34.00	SDI / z-Score	0.59
Assigned Value	31.73	Average SDI	0.22
SDPA	3.848	Uncertainty of AV	0.44
Standard Unit Result Val	34.00	%DEV	2.10

Note : # - Not evaluated / Bimodal distribution
X : SDI more than 4

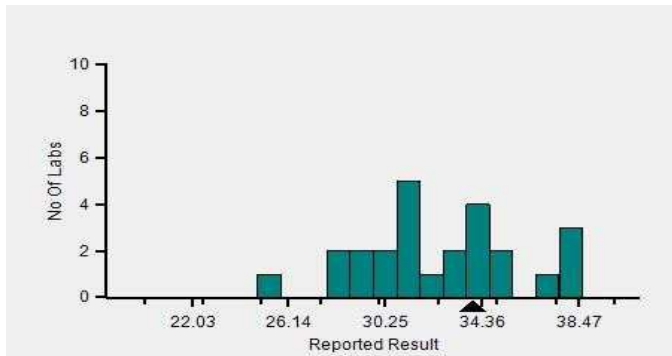
Frequency Histogram



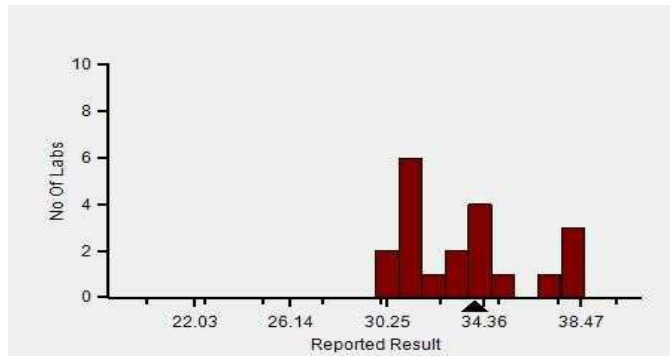
Z-Score Trend - Within Round



Frequency Histogram Your Method



Frequency Histogram Your Analyzer



Lab : 1052

Lab Name : KRSNAA DIAGNOSTICS LTD, PATHANKOT

Report Date : 19/12/2023

Cycle No : 230310

Sample No : 01

Sample Date : 25/11/2023

Frequency Histogram Your Method



Note : SDI with * marked are not considered for evaluation

Comments :

Biochemistry, HDL		N	Mean	SD	CV%	Excluded
	All Analyzer	354	30.27	4.11	13.58	11
Your Analyzer :	Diasys 200 Pro	22	33.30	2.77	8.33	2
	Roche cobas c 311	37	26.99	1.84	6.81	-
	Erba EM 200	35	32.02	4.32	13.48	1
	Fuji Dri-Chem NX500/i	32	29.61	2.17	7.32	-
	Roche cobas c 111	22	27.35	3.34	12.22	-
	ERBA XL-640	21	31.63	6.25	19.76	-
	Roche cobas 6000	12	27.17	0.96	3.52	-
	Roche cobas INTEGRA	11	26.61	1.30	4.87	-

Remarks: Interpretation of your reports

- a) If your SDI lies between +/- 2.0 SDI then your results are well within limits.
- b) If your SDI lies between +/-2.0 to 2.99 SDI then it is a warning alert flag.
- c) If your SDI is +/- 3.0 SDI or more then it is an action alert flag.

Interpretation when an analyte is reported for multiple samples in a Round:

- a) Reported on 2 samples:
 - Two out of two pass - Acceptable performance
 - One out of two pass - Review for random error & take action if appropriate
 - Both failed - Unacceptable performance, Review for systematic error
- b) Reported on 3 samples:
 - All pass - Acceptable performance
 - Two out of three pass - Review for random error & take action if appropriate
 - One out of three pass - Unacceptable performance, Review for systematic error
 - All failed - Unacceptable performance, Review for systematic error



Lab : 1052

Cycle No : 230310

Lab Name : KRSNAA DIAGNOSTICS LTD, PATHANKOT

Sample No : 01

Report Date : 19/12/2023

Sample Date : 25/11/2023

Biochemistry, LDL, mg/dl

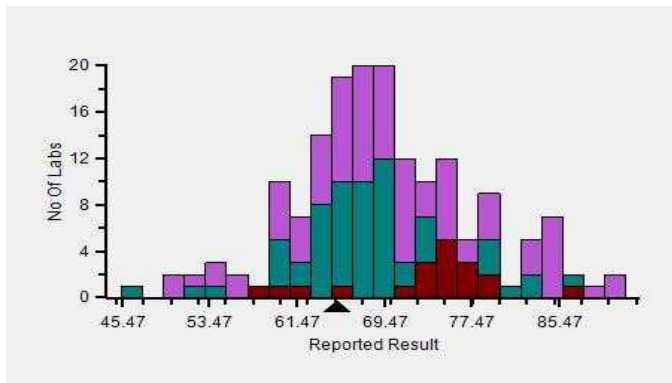
Comparative Statistics

	N	Mean	SD	CV%	Excluded
All Methods	186	69.47	8.00	11.51	8
Direct measure - (Your Method)	87	69.07	7.36	10.66	7
Diasys 200 Pro - (Your Analyzer)	21	73.11	7.36	10.07	2

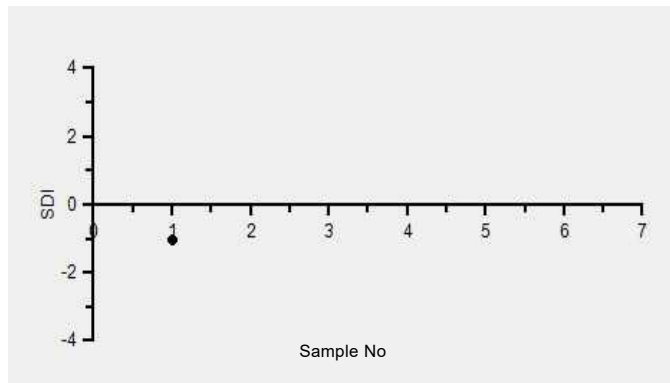
Your Result	65.17	SDI / z-Score	-1.02
Assigned Value	73.39	Average SDI	-1.15
SDPA	8.085	Uncertainty of AV	1.24
Standard Unit Result Val	65.17	%DEV	-10.86

Note : # - Not evaluated / Bimodal distribution
X : SDI more than 4

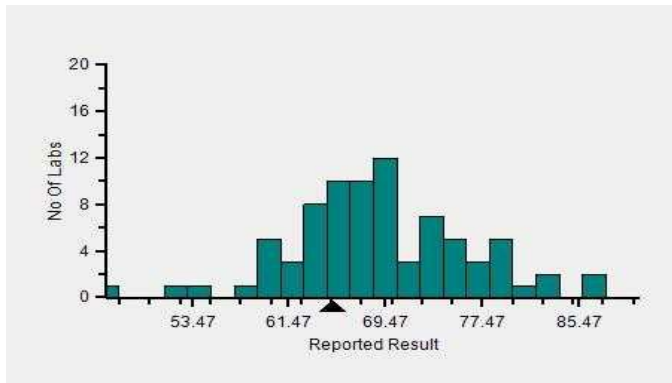
Frequency Histogram



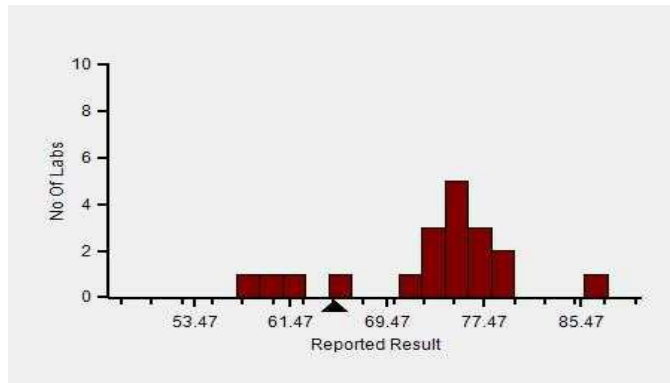
Z-Score Trend - Within Round



Frequency Histogram Your Method



Frequency Histogram Your Analyzer



Lab : 1052

Cycle No : 230310

Lab Name : KRSNAA DIAGNOSTICS LTD, PATHANKOT

Sample No : 01

Report Date : 19/12/2023

Sample Date : 25/11/2023

Frequency Histogram Your Method



Note : SDI with * marked are not considered for evaluation

Comments :

Biochemistry, LDL		N	Mean	SD	CV%	Excluded
	All Analyzer	186	69.47	8.00	11.51	8
Your Analyzer :	Diasys 200 Pro	21	73.11	7.36	10.07	2
	Roche cobas c 311	28	68.50	6.17	9.00	-
	Erba EM 200	16	69.57	11.60	16.68	2
	Roche cobas 6000	12	65.36	2.19	3.36	-
	Beckman Coulter DxC 700 AU	10	76.34	8.65	11.33	-
	ERBA XL-640	8	69.88	5.11	7.32	1
	Roche cobas c 111	8	63.06	9.38	14.87	1
	Roche cobas INTEGRA	7	69.05	2.75	3.99	1

Remarks: Interpretation of your reports

- a) If your SDI lies between +/- 2.0 SDI then your results are well within limits.
- b) If your SDI lies between +/-2.0 to 2.99 SDI then it is a warning alert flag.
- c) If your SDI is +/- 3.0 SDI or more then it is an action alert flag.

Interpretation when an analyte is reported for multiple samples in a Round:

- a) Reported on 2 samples:
 - Two out of two pass - Acceptable performance
 - One out of two pass - Review for random error & take action if appropriate
 - Both failed - Unacceptable performance, Review for systematic error
- b) Reported on 3 samples:
 - All pass - Acceptable performance
 - Two out of three pass - Review for random error & take action if appropriate
 - One out of three pass - Unacceptable performance, Review for systematic error
 - All failed - Unacceptable performance, Review for systematic error



Lab : 1052

Cycle No : 230310

Lab Name : KRSNAA DIAGNOSTICS LTD, PATHANKOT

Sample No : 01

Report Date : 19/12/2023

Sample Date : 25/11/2023

Biochemistry, Potassium, mmol/L

Comparative Statistics

	N	Mean	SD	CV%	Excluded
All Methods	320	3.53	0.20	5.67	5
ISE direct - (Your Method)	227	3.51	0.21	5.93	4
Diasys 200 Pro - (Your Analyzer)	1	--	--	--	--

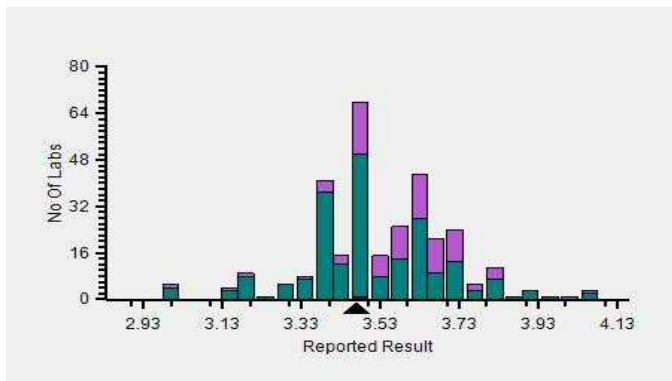
Evaluation Based On - Method wise Peer Grouping

Your Result	3.47	SDI / z-Score	-0.13
Assigned Value	3.51	Average SDI	0.02
SDPA	0.310	Uncertainty of AV	0.03
Standard Unit Result Val	3.47	%DEV	-1.08

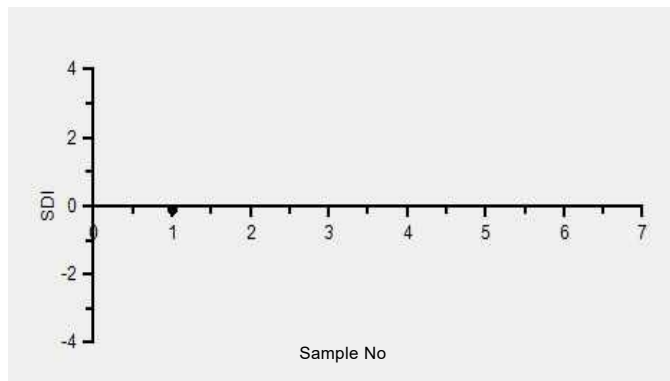
Note : # - Not evaluated / Bimodal distribution

X : SDI more than 4

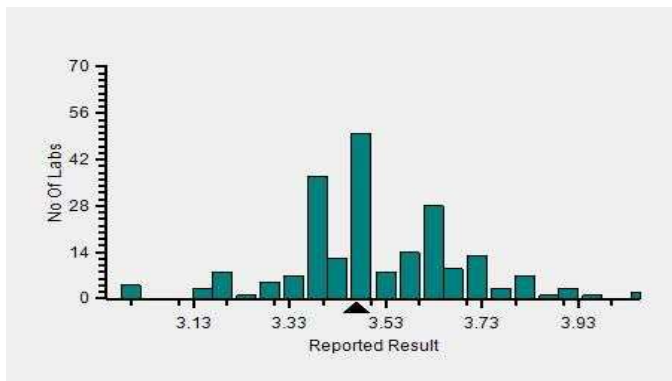
Frequency Histogram



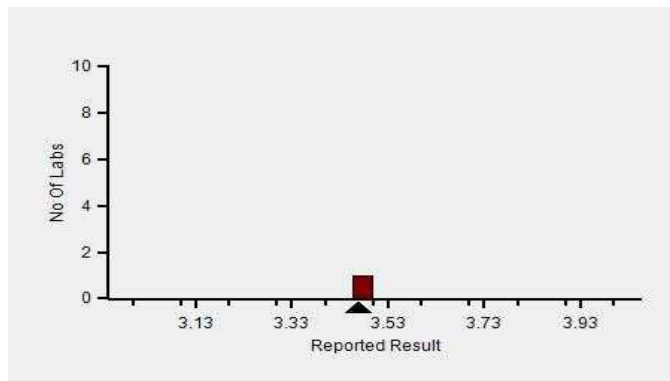
Z-Score Trend - Within Round



Frequency Histogram Your Method



Frequency Histogram Your Analyzer



Lab : 1052

Cycle No : 230310

Lab Name : KRSNAA DIAGNOSTICS LTD, PATHANKOT

Sample No : 01

Report Date : 19/12/2023

Sample Date : 25/11/2023

Frequency Histogram Your Method



Note : SDI with * marked are not considered for evaluation

Comments :

Biochemistry, Potassium		N	Mean	SD	CV%	Excluded
	All Analyzer	320	3.53	0.20	5.67	5
Your Analyzer :	Diasys 200 Pro	1	-	-	-	-
	Fuji Dri-Chem NX500/i	38	3.46	0.11	3.12	-
	Roche cobas c 311	26	3.65	0.10	2.77	-
	ACCULYTE-3P	19	3.48	0.20	5.80	1
	Roche AVL 9180	15	3.53	0.30	8.44	-
	EasyLyte	15	3.53	0.19	5.27	-
	Fuji Dri-Chem 4000i	14	3.49	0.14	3.95	-
	Fuji Dri-Chem NX600	14	3.46	0.12	3.53	-

Remarks: Interpretation of your reports

- a) If your SDI lies between +/- 2.0 SDI then your results are well within limits.
- b) If your SDI lies between +/-2.0 to 2.99 SDI then it is a warning alert flag.
- c) If your SDI is +/- 3.0 SDI or more then it is an action alert flag.

Interpretation when an analyte is reported for multiple samples in a Round:

a) Reported on 2 samples:

- Two out of two pass - Acceptable performance
- One out of two pass - Review for random error & take action if appropriate
- Both failed - Unacceptable performance, Review for systematic error

b) Reported on 3 samples:

- All pass - Acceptable performance
- Two out of three pass - Review for random error & take action if appropriate
- One out of three pass - Unacceptable performance, Review for systematic error
- All failed - Unacceptable performance, Review for systematic error



Lab : 1052

Cycle No : 230310

Lab Name : KRSNAA DIAGNOSTICS LTD, PATHANKOT

Sample No : 01

Report Date : 19/12/2023

Sample Date : 25/11/2023

Biochemistry, Sodium, mmol/L

Comparative Statistics

	N	Mean	SD	CV%	Excluded
All Methods	320	108.76	5.14	4.73	10
ISE direct - (Your Method)	225	108.93	5.57	5.11	8
ACCULYTE-3P - (Your Analyzer)	20	106.54	5.20	4.88	2

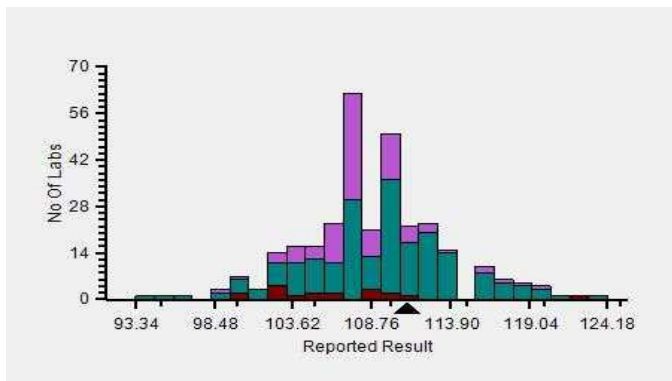
Evaluation Based On - Method wise Peer Grouping

Your Result	111.05	SDI / z-Score	0.26
Assigned Value	109.10	Average SDI	0.25
SDPA	7.400	Uncertainty of AV	0.64
Standard Unit Result Val	111.05	%DEV	4.23

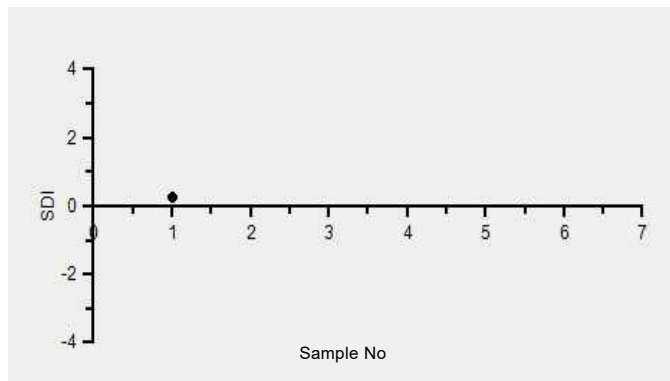
Note : # - Not evaluated / Bimodal distribution

X : SDI more than 4

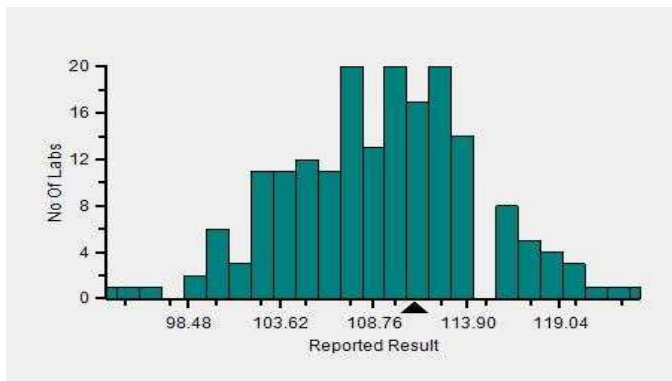
Frequency Histogram



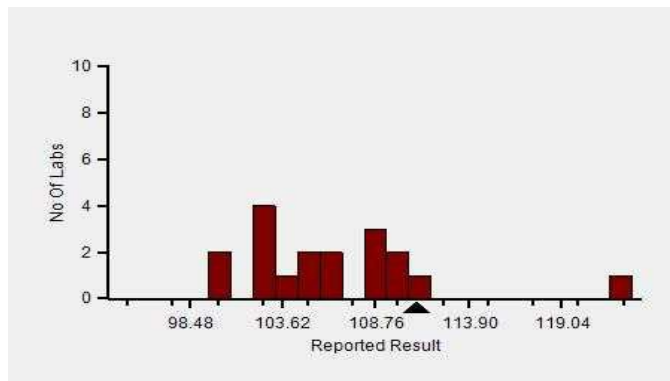
Z-Score Trend - Within Round



Frequency Histogram Your Method



Frequency Histogram Your Analyzer



Lab : 1052

Cycle No : 230310

Lab Name : KRSNAA DIAGNOSTICS LTD, PATHANKOT

Sample No : 01

Report Date : 19/12/2023

Sample Date : 25/11/2023

Frequency Histogram Your Method



Note : SDI with * marked are not considered for evaluation

Comments :

Biochemistry, Sodium		N	Mean	SD	CV%	Excluded
	All Analyzer	320	108.76	5.14	4.73	10
Your Analyzer :	ACCULYTE-3P	20	106.54	5.20	4.88	2
	Fuji Dri-Chem NX500/i	39	109.90	3.02	2.75	-
	Roche cobas c 311	27	107.98	2.95	2.73	-
	Roche AVL 9180	15	106.41	8.55	8.03	-
	EasyLyte	15	107.81	4.51	4.19	-
	Fuji Dri-Chem NX600	14	108.86	3.16	2.90	-
	Fuji Dri-Chem 4000i	13	110.62	3.97	3.59	-
	Sensa Core ST 200 plus	10	111.69	7.13	6.39	-

Remarks: Interpretation of your reports

- a) If your SDI lies between +/- 2.0 SDI then your results are well within limits.
- b) If your SDI lies between +/-2.0 to 2.99 SDI then it is a warning alert flag.
- c) If your SDI is +/- 3.0 SDI or more then it is an action alert flag.

Interpretation when an analyte is reported for multiple samples in a Round:

- a) Reported on 2 samples:
 - Two out of two pass - Acceptable performance
 - One out of two pass - Review for random error & take action if appropriate
 - Both failed - Unacceptable performance, Review for systematic error
- b) Reported on 3 samples:
 - All pass - Acceptable performance
 - Two out of three pass - Review for random error & take action if appropriate
 - One out of three pass - Unacceptable performance, Review for systematic error
 - All failed - Unacceptable performance, Review for systematic error



Lab : 1052

Cycle No : 230310

Lab Name : KRSNAA DIAGNOSTICS LTD, PATHANKOT

Sample No : 01

Report Date : 19/12/2023

Sample Date : 25/11/2023

Biochemistry, Total Protein, g/dL

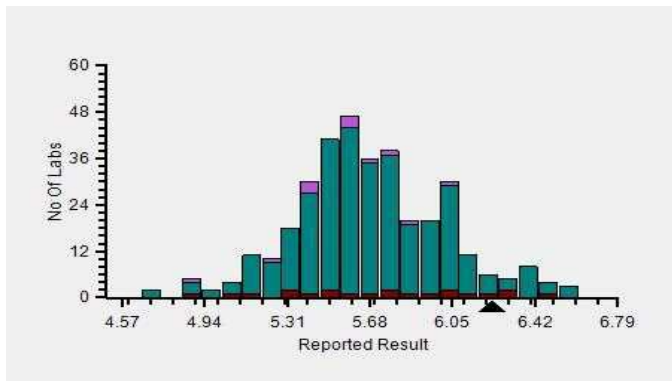
Comparative Statistics

	N	Mean	SD	CV%	Excluded
All Methods	367	5.68	0.37	6.51	10
Biuret - (Your Method)	355	5.68	0.37	6.46	9
Diasys 200 Pro - (Your Analyzer)	22	5.77	0.49	8.54	--

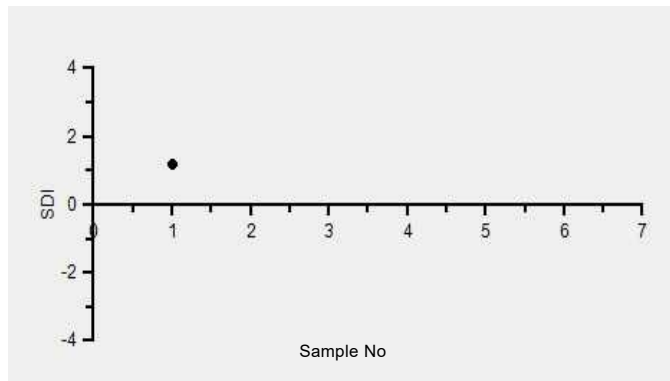
Your Result	6.23	SDI / z-Score	1.20
Assigned Value	5.70	Average SDI	1.05
SDPA	0.442	Uncertainty of AV	0.05
Standard Unit Result Val	6.23	%DEV	7.95

Note : # - Not evaluated / Bimodal distribution
X : SDI more than 4

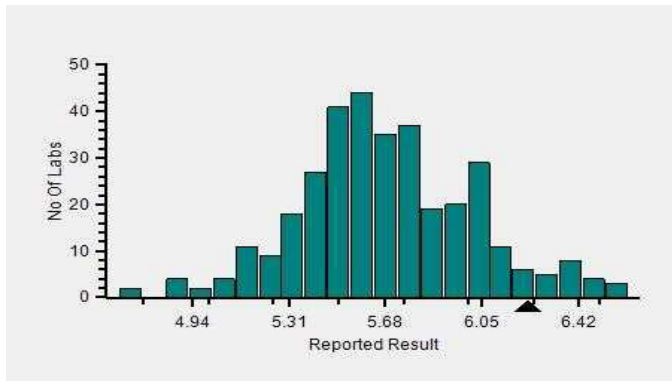
Frequency Histogram



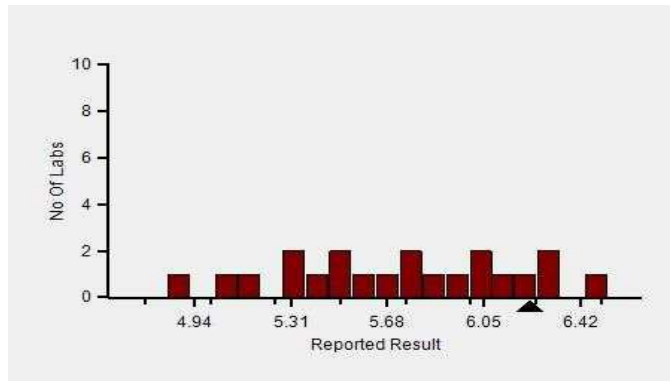
Z-Score Trend - Within Round



Frequency Histogram Your Method



Frequency Histogram Your Analyzer



Lab : 1052

Cycle No : 230310

Lab Name : KRSNAA DIAGNOSTICS LTD, PATHANKOT

Sample No : 01

Report Date : 19/12/2023

Sample Date : 25/11/2023

Frequency Histogram Your Method



Note : SDI with * marked are not considered for evaluation

Comments :

Biochemistry, Total Protein		N	Mean	SD	CV%	Excluded
	All Analyzer	367	5.68	0.37	6.51	10
Your Analyzer :	Diasys 200 Pro	22	5.77	0.49	8.54	-
	Erba EM 200	40	5.56	0.47	8.44	2
	Roche cobas c 311	36	5.61	0.17	3.07	-
	Fuji Dri-Chem NX500/i	32	5.93	0.32	5.43	-
	Roche cobas c 111	23	5.49	0.40	7.34	3
	ERBA XL-640	21	5.86	0.33	5.70	1
	Roche cobas INTEGRA	12	5.41	0.40	7.43	-
	Roche cobas INTEGRA	12	5.41	0.40	7.43	-

Remarks: Interpretation of your reports

- a) If your SDI lies between +/- 2.0 SDI then your results are well within limits.
- b) If your SDI lies between +/-2.0 to 2.99 SDI then it is a warning alert flag.
- c) If your SDI is +/- 3.0 SDI or more then it is an action alert flag.

Interpretation when an analyte is reported for multiple samples in a Round:

a) Reported on 2 samples:

- Two out of two pass - Acceptable performance
- One out of two pass - Review for random error & take action if appropriate
- Both failed - Unacceptable performance, Review for systematic error

b) Reported on 3 samples:

- All pass - Acceptable performance
- Two out of three pass - Review for random error & take action if appropriate
- One out of three pass - Unacceptable performance, Review for systematic error
- All failed - Unacceptable performance, Review for systematic error



Lab : 1052

Cycle No : 230310

Lab Name : KRSNAA DIAGNOSTICS LTD, PATHANKOT

Sample No : 01

Report Date : 19/12/2023

Sample Date : 25/11/2023

Biochemistry, Triglycerides, mg/dl

Comparative Statistics

	N	Mean	SD	CV%	Excluded
All Methods	363	126.49	12.36	9.77	13
Colorimetric enzymatic - GPO - (Your Method)	34	116.35	9.17	7.88	--
Diasys 200 Pro - (Your Analyzer)	22	118.40	6.56	5.54	--

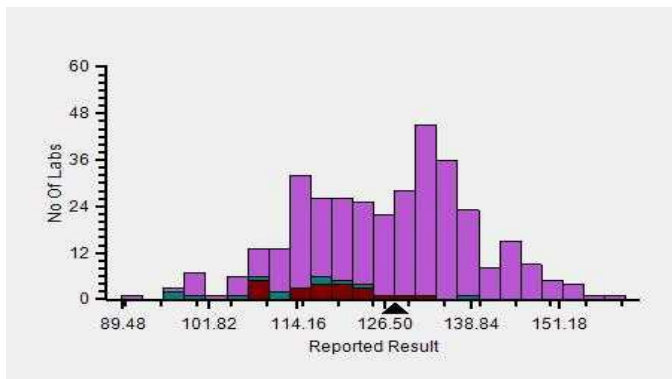
Evaluation Based On - Equipment wise Peer Grouping

Your Result	128.00	SDI / z-Score	0.61
Assigned Value	122.62	Average SDI	0.99
SDPA	8.822	Uncertainty of AV	1.41
Standard Unit Result Val	128.00	%DEV	8.11

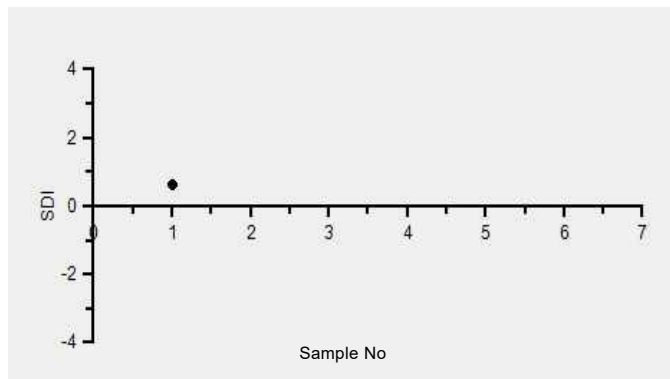
Note : # - Not evaluated / Bimodal distribution

X : SDI more than 4

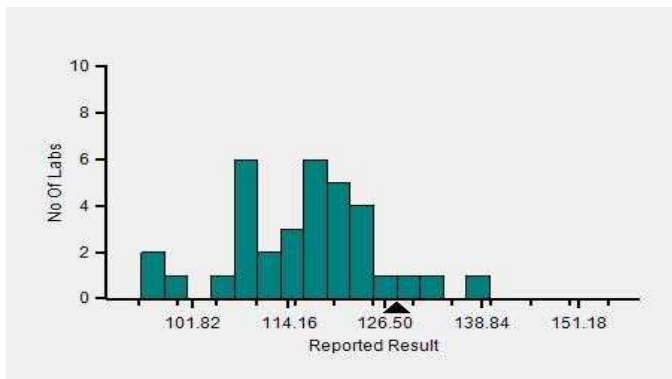
Frequency Histogram



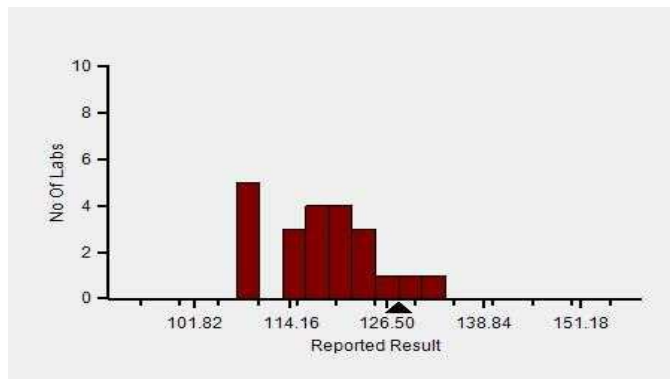
Z-Score Trend - Within Round



Frequency Histogram Your Method



Frequency Histogram Your Analyzer



Lab : 1052

Cycle No : 230310

Lab Name : KRSNAA DIAGNOSTICS LTD, PATHANKOT

Sample No : 01

Report Date : 19/12/2023

Sample Date : 25/11/2023

Frequency Histogram Your Method



Note : SDI with * marked are not considered for evaluation

Comments :

Biochemistry, Triglycerides		N	Mean	SD	CV%	Excluded
	All Analyzer	363	126.49	12.36	9.77	13
Your Analyzer :	Diasys 200 Pro	22	118.40	6.56	5.54	-
	Erba EM 200	37	112.82	10.51	9.31	1
	Roche cobas c 311	37	132.79	5.14	3.87	-
	Fuji Dri-Chem NX500/i	31	141.33	7.25	5.13	-
	Roche cobas c 111	23	134.15	10.29	7.67	1
	ERBA XL-640	20	113.62	10.94	9.63	3
	Roche cobas 6000	12	132.13	4.74	3.59	-
	Roche cobas INTEGRA	12	131.71	6.42	4.87	-

Remarks: Interpretation of your reports

- If your SDI lies between +/- 2.0 SDI then your results are well within limits.
- If your SDI lies between +/-2.0 to 2.99 SDI then it is a warning alert flag.
- If your SDI is +/- 3.0 SDI or more then it is an action alert flag.

Interpretation when an analyte is reported for multiple samples in a Round:

- Reported on 2 samples:
 - Two out of two pass - Acceptable performance
 - One out of two pass - Review for random error & take action if appropriate
 - Both failed - Unacceptable performance, Review for systematic error
- Reported on 3 samples:
 - All pass - Acceptable performance
 - Two out of three pass - Review for random error & take action if appropriate
 - One out of three pass - Unacceptable performance, Review for systematic error
 - All failed - Unacceptable performance, Review for systematic error



Lab : 1052

Cycle No : 230310

Lab Name : KRSNAA DIAGNOSTICS LTD, PATHANKOT

Sample No : 01

Report Date : 19/12/2023

Sample Date : 25/11/2023

Biochemistry, Urea, mg/dl

Comparative Statistics

	N	Mean	SD	CV%	Excluded
All Methods	367	20.11	2.23	11.08	11
Urease, UV - (Your Method)	85	20.59	2.62	12.71	3
Diasys 200 Pro - (Your Analyzer)	22	20.69	3.53	17.08	1

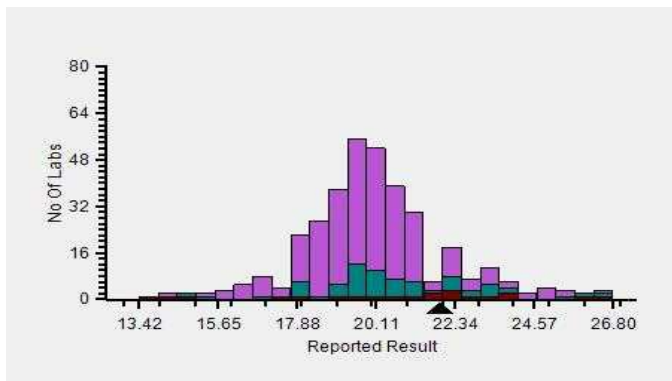
Evaluation Based On - Equipment wise Peer Grouping

Your Result	21.90	SDI / z-Score	
Assigned Value	#	Average SDI	0.00
SDPA	#	Uncertainty of AV	
Standard Unit Result Val	21.90 #	%DEV	5.85

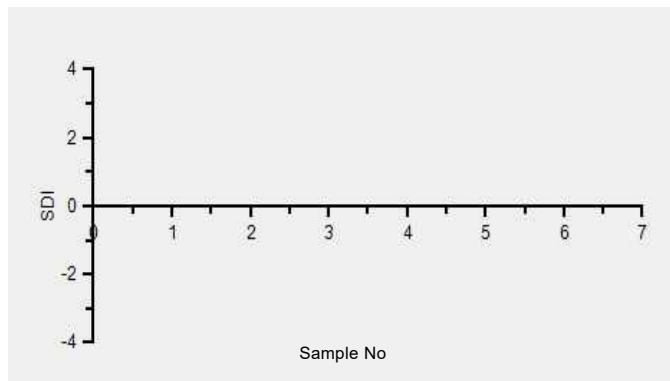
Note : # - Not evaluated / Bimodal distribution

X : SDI more than 4

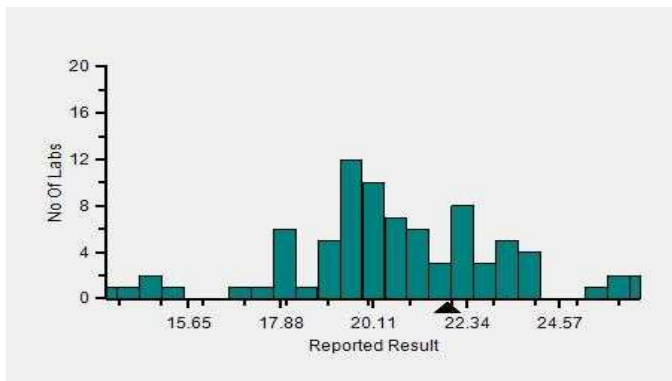
Frequency Histogram



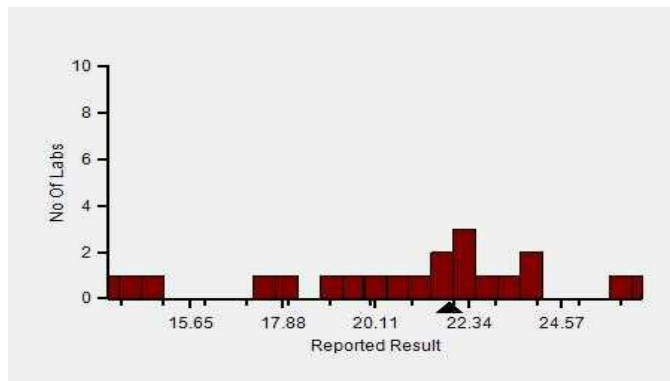
Z-Score Trend - Within Round



Frequency Histogram Your Method



Frequency Histogram Your Analyzer



Lab : 1052

Cycle No : 230310

Lab Name : KRSNAA DIAGNOSTICS LTD, PATHANKOT

Sample No : 01

Report Date : 19/12/2023

Sample Date : 25/11/2023

Frequency Histogram Your Method



Note : SDI with * marked are not considered for evaluation

Comments :

Biochemistry, Urea		N	Mean	SD	CV%	Excluded
	All Analyzer	367	20.11	2.23	11.08	11
Your Analyzer :	Diasys 200 Pro	22	20.69	3.53	17.08	1
	Erba EM 200	40	19.98	2.21	11.05	-
	Roche cobas c 311	37	20.11	1.12	5.56	1
	Fuji Dri-Chem NX500/i	31	19.87	0.87	4.40	1
	Roche cobas c 111	23	19.18	2.03	10.60	-
	ERBA XL-640	21	20.25	1.90	9.38	-
	Roche cobas 6000	12	19.89	0.90	4.52	-
	Roche cobas INTEGRA	12	19.25	1.35	7.00	-

Remarks: Interpretation of your reports

- a) If your SDI lies between +/- 2.0 SDI then your results are well within limits.
- b) If your SDI lies between +/-2.0 to 2.99 SDI then it is a warning alert flag.
- c) If your SDI is +/- 3.0 SDI or more then it is an action alert flag.

Interpretation when an analyte is reported for multiple samples in a Round:

- a) Reported on 2 samples:
 - Two out of two pass - Acceptable performance
 - One out of two pass - Review for random error & take action if appropriate
 - Both failed - Unacceptable performance, Review for systematic error
- b) Reported on 3 samples:
 - All pass - Acceptable performance
 - Two out of three pass - Review for random error & take action if appropriate
 - One out of three pass - Unacceptable performance, Review for systematic error
 - All failed - Unacceptable performance, Review for systematic error



Lab : 1052

Cycle No : 230310

Lab Name : KRSNAA DIAGNOSTICS LTD, PATHANKOT

Sample No : 01

Report Date : 19/12/2023

Sample Date : 25/11/2023

Biochemistry, Uric Acid, mg/dl

Comparative Statistics

	N	Mean	SD	CV%	Excluded
All Methods	364	3.95	0.43	10.82	8
Uricase - (Your Method)	83	3.89	0.40	10.15	2
Diasys 200 Pro - (Your Analyzer)	22	3.73	0.37	9.78	--

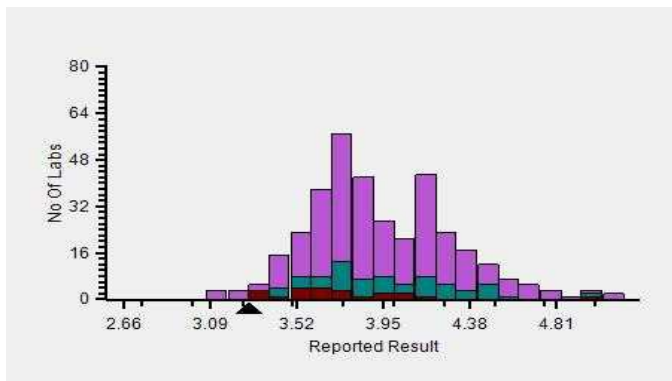
Evaluation Based On - Equipment wise Peer Grouping

Your Result	3.28	SDI / z-Score	-1.32
Assigned Value	4.04	Average SDI	-1.48
SDPA	0.570	Uncertainty of AV	0.09
Standard Unit Result Val	3.28	%DEV	-12.16

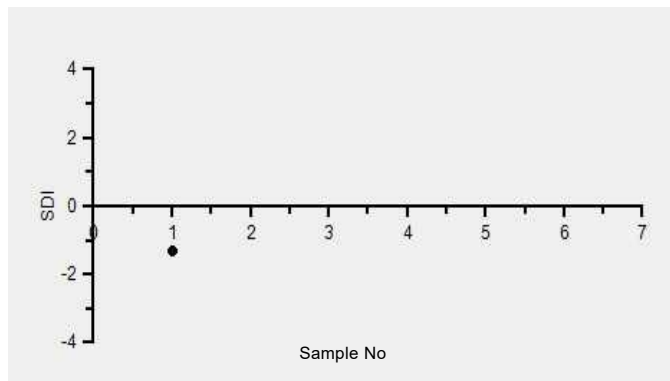
Note : # - Not evaluated / Bimodal distribution

X : SDI more than 4

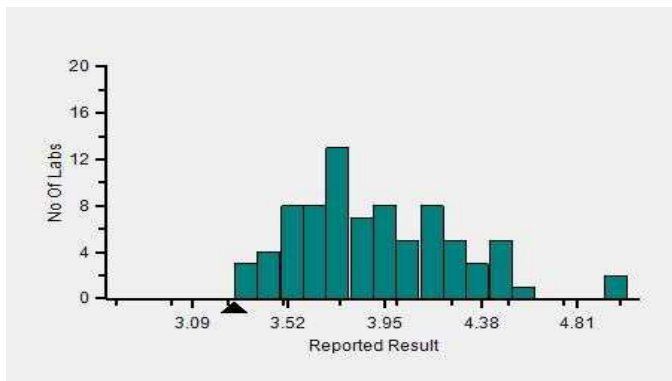
Frequency Histogram



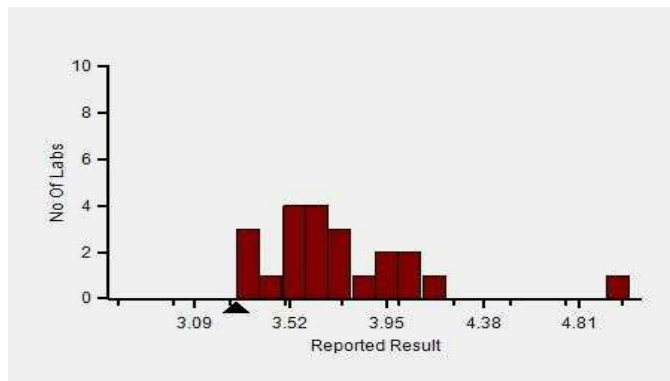
Z-Score Trend - Within Round



Frequency Histogram Your Method



Frequency Histogram Your Analyzer



Lab : 1052

Cycle No : 230310

Lab Name : KRSNAA DIAGNOSTICS LTD, PATHANKOT

Sample No : 01

Report Date : 19/12/2023

Sample Date : 25/11/2023

Frequency Histogram Your Method



Note : SDI with * marked are not considered for evaluation

Comments :

Biochemistry, Uric Acid		N	Mean	SD	CV%	Excluded
	All Analyzer	364	3.95	0.43	10.82	8
Your Analyzer :	Diasys 200 Pro	22	3.73	0.37	9.78	-
	Erba EM 200	37	4.11	0.38	9.22	1
	Roche cobas c 311	36	3.69	0.16	4.33	-
	Fuji Dri-Chem NX500/i	31	4.22	0.26	6.09	-
	Roche cobas c 111	22	3.73	0.29	7.84	1
	ERBA XL-640	21	4.10	0.53	12.87	2
	Roche cobas 6000	12	3.70	0.11	3.05	-
	Roche cobas INTEGRA	12	3.80	0.14	3.71	-

Remarks: Interpretation of your reports

- a) If your SDI lies between +/- 2.0 SDI then your results are well within limits.
- b) If your SDI lies between +/-2.0 to 2.99 SDI then it is a warning alert flag.
- c) If your SDI is +/- 3.0 SDI or more then it is an action alert flag.

Interpretation when an analyte is reported for multiple samples in a Round:

- a) Reported on 2 samples:
 - Two out of two pass - Acceptable performance
 - One out of two pass - Review for random error & take action if appropriate
 - Both failed - Unacceptable performance, Review for systematic error
- b) Reported on 3 samples:
 - All pass - Acceptable performance
 - Two out of three pass - Review for random error & take action if appropriate
 - One out of three pass - Unacceptable performance, Review for systematic error
 - All failed - Unacceptable performance, Review for systematic error

Dr Puneet Kumar Nigam

Dr Puneet Kumar Nigam
PT coordinator & Technical Manager, MHL EQAS
Unit No. 409-416.
Commercial Building - 1A
Kohinoor Mall, Kiro Road, Kurla (W),
Mumbai - 400070

This is a computer generated report hence signature is not required



PC-1022