

Lab : 1052

Cycle No : 230310

Lab Name : KRSNAA DIAGNOSTICS LTD, PATHANKOT

Sample No : 03

Report Date : 19/12/2023

Sample Date : 07/10/2023

Haematology - CBC, Erythrocyte (RBC) Count, mill/cu.mm

Comparative Statistics

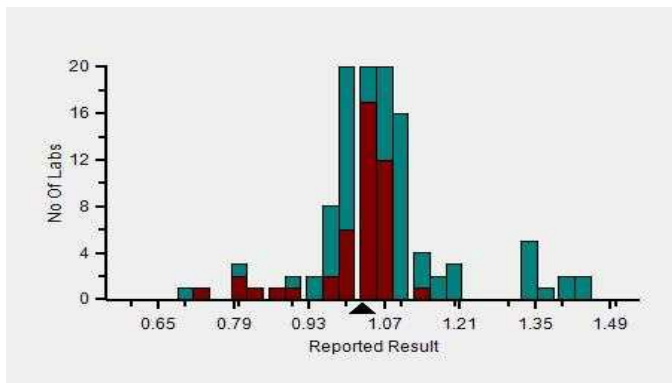
| | N | Mean | SD | CV% | Excluded |
|---------------------------------------|-----|------|------|-------|----------|
| All Methods | 170 | 1.07 | 0.14 | 13.35 | 7 |
| Impedance - (Your Method) | 164 | 1.07 | 0.14 | 13.27 | 6 |
| Horiba Yumizen H550 - (Your Analyzer) | 46 | 1.02 | 0.11 | 10.71 | 1 |

Evaluation Based On - Equipment wise Peer Grouping

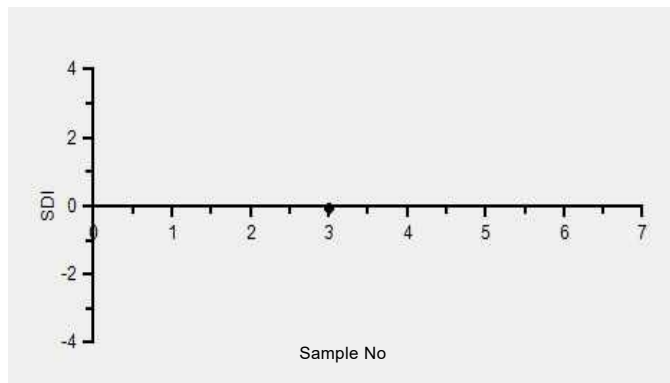
| | | | |
|--------------------------|-------|-------------------|-------|
| Your Result | 1.03 | SDI / z-Score | -0.05 |
| Assigned Value | 1.04 | Average SDI | -0.02 |
| SDPA | 0.160 | Uncertainty of AV | 0.03 |
| Standard Unit Result Val | 1.03 | %DEV | 1.18 |

Note : # - Not evaluated / Bimodal distribution
X : SDI more than 4

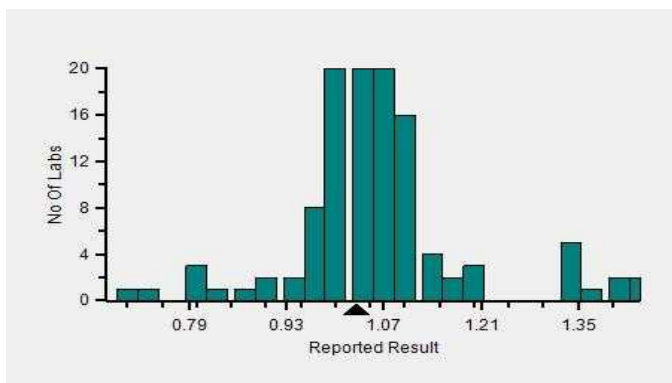
Frequency Histogram



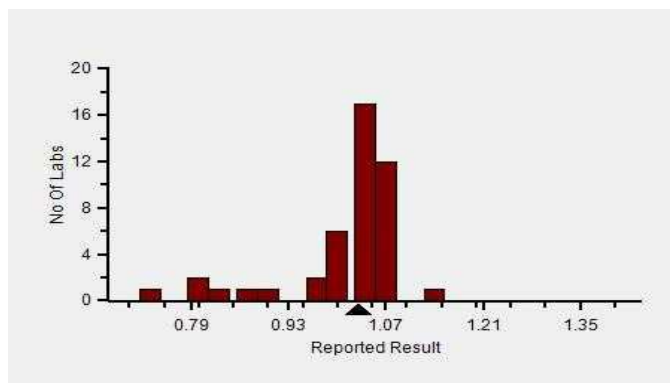
Z-Score Trend - Within Round



Frequency Histogram Your Method



Frequency Histogram Your Analyzer



Lab : 1052

Cycle No : 230310

Lab Name : KRSNAA DIAGNOSTICS LTD, PATHANKOT

Sample No : 03

Report Date : 19/12/2023

Sample Date : 07/10/2023

Frequency Histogram Your Method



Note : SDI with * marked are not considered for evaluation

Comments :

| Haematology - CBC, Erythrocyte (RBC) Count | | N | Mean | SD | CV% | Excluded |
|--|----------------------------|-----------|-------------|-------------|--------------|----------|
| | All Analyzer | 170 | 1.07 | 0.14 | 13.35 | 7 |
| Your Analyzer : | Horiba Yumizen H550 | 46 | 1.02 | 0.11 | 10.71 | 1 |
| | Horiba Yumizen H500 | 17 | 1.08 | 0.17 | 15.54 | - |
| | Erba ELite 580 | 13 | 1.02 | 0.03 | 2.46 | - |
| | Mindray BC-5000 | 12 | 1.04 | 0.04 | 3.35 | - |
| | Horiba ABX Pentra XL 80 | 8 | 1.36 | 0.16 | 11.96 | - |
| | Nihon Kohden Celltac Alpha | 6 | 1.09 | 0.03 | 2.39 | - |
| | Sysmex XP-100 | 5 | 1.21 | 0.23 | 18.62 | - |
| | Beckman Coulter DxH 560 | 5 | 1.04 | 0.01 | 1.06 | - |

Remarks: Interpretation of your reports

- a) If your SDI lies between +/- 2.0 SDI then your results are well within limits.
- b) If your SDI lies between +/-2.0 to 2.99 SDI then it is a warning alert flag.
- c) If your SDI is +/- 3.0 SDI or more then it is an action alert flag.

Interpretation when an analyte is reported for multiple samples in a Round:

- a) Reported on 2 samples:
 - Two out of two pass - Acceptable performance
 - One out of two pass - Review for random error & take action if appropriate
 - Both failed - Unacceptable performance, Review for systematic error
- b) Reported on 3 samples:
 - All pass - Acceptable performance
 - Two out of three pass - Review for random error & take action if appropriate
 - One out of three pass - Unacceptable performance, Review for systematic error
 - All failed - Unacceptable performance, Review for systematic error



Lab : 1052

Cycle No : 230310

Lab Name : KRSNAA DIAGNOSTICS LTD, PATHANKOT

Sample No : 03

Report Date : 19/12/2023

Sample Date : 07/10/2023

Haematology - CBC, Haemoglobin, g/dL

Comparative Statistics

| | N | Mean | SD | CV% | Excluded |
|---------------------------------------|-----|------|------|-------|----------|
| All Methods | 170 | 2.86 | 0.38 | 13.37 | 15 |
| Photometric - (Your Method) | 44 | 2.87 | 0.46 | 16.14 | 4 |
| Horiba Yumizen H550 - (Your Analyzer) | 46 | 2.68 | 0.07 | 2.53 | 2 |

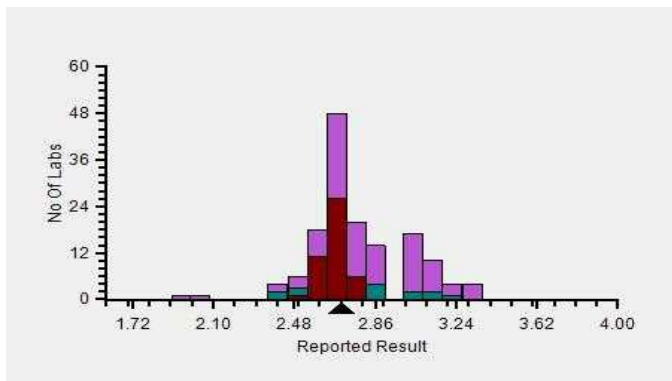
Evaluation Based On - Equipment wise Peer Grouping

| | | | |
|--------------------------|-------|-------------------|------|
| Your Result | 2.70 | SDI / z-Score | 0.00 |
| Assigned Value | 2.70 | Average SDI | 0.05 |
| SDPA | 0.240 | Uncertainty of AV | 0.04 |
| Standard Unit Result Val | 2.70 | %DEV | 0.60 |

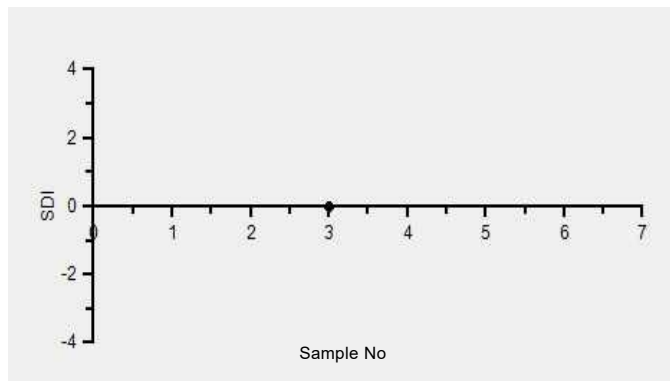
Note : # - Not evaluated / Bimodal distribution

X : SDI more than 4

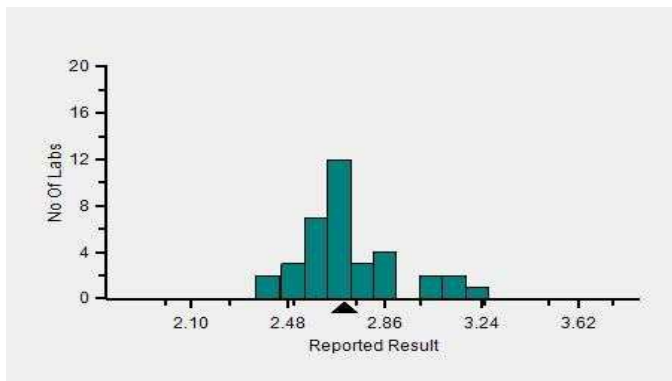
Frequency Histogram



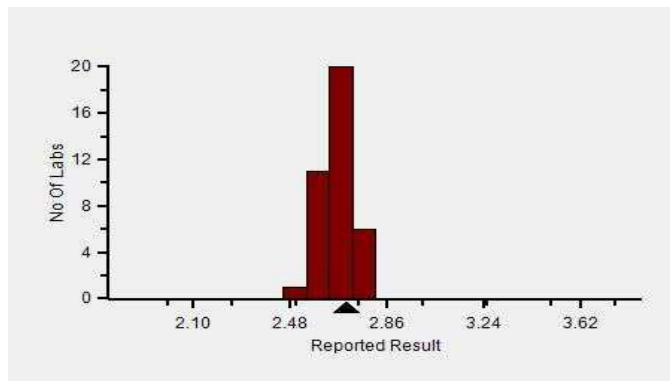
Z-Score Trend - Within Round



Frequency Histogram Your Method



Frequency Histogram Your Analyzer



Lab : 1052

Cycle No : 230310

Lab Name : KRSNAA DIAGNOSTICS LTD, PATHANKOT

Sample No : 03

Report Date : 19/12/2023

Sample Date : 07/10/2023

Frequency Histogram Your Method



Note : SDI with * marked are not considered for evaluation

Comments :

| Haematology - CBC, Haemoglobin | | N | Mean | SD | CV% | Excluded |
|--------------------------------|----------------------------|-----------|-------------|-------------|-------------|----------|
| | All Analyzer | 170 | 2.86 | 0.38 | 13.37 | 15 |
| Your Analyzer : | Horiba Yumizen H550 | 46 | 2.68 | 0.07 | 2.53 | 2 |
| | Horiba Yumizen H500 | 17 | 2.71 | 0.06 | 2.36 | 2 |
| | Erba ELite 580 | 13 | 2.70 | 0.06 | 2.15 | - |
| | Horiba ABX Pentra XL 80 | 8 | 4.23 | 0.08 | 1.80 | 1 |
| | Mindray BC 5000 | 8 | 3.11 | 0.06 | 2.06 | - |
| | Nihon Kohden Celltac Alpha | 6 | 2.90 | 0.30 | 10.49 | - |
| | Sysmex XP-100 | 5 | 3.08 | 0.15 | 4.88 | 1 |
| | Beckman Coulter DxH 560 | 5 | 2.47 | 0.06 | 2.59 | - |

Remarks: Interpretation of your reports

- a) If your SDI lies between +/- 2.0 SDI then your results are well within limits.
- b) If your SDI lies between +/-2.0 to 2.99 SDI then it is a warning alert flag.
- c) If your SDI is +/- 3.0 SDI or more then it is an action alert flag.

Interpretation when an analyte is reported for multiple samples in a Round:

a) Reported on 2 samples:

- Two out of two pass - Acceptable performance
- One out of two pass - Review for random error & take action if appropriate
- Both failed - Unacceptable performance, Review for systematic error

b) Reported on 3 samples:

- All pass - Acceptable performance
- Two out of three pass - Review for random error & take action if appropriate
- One out of three pass - Unacceptable performance, Review for systematic error
- All failed - Unacceptable performance, Review for systematic error



Lab : 1052

Cycle No : 230310

Lab Name : KRSNAA DIAGNOSTICS LTD, PATHANKOT

Sample No : 03

Report Date : 19/12/2023

Sample Date : 07/10/2023

Haematology - CBC, Hematocrit, %

Comparative Statistics

| | N | Mean | SD | CV% | Excluded |
|---------------------------------------|-----|-------|------|-------|----------|
| All Methods | 163 | 13.35 | 1.61 | 12.05 | 9 |
| Calculated - (Your Method) | 101 | 13.11 | 1.58 | 12.03 | 5 |
| Horiba Yumizen H550 - (Your Analyzer) | 46 | 12.66 | 1.44 | 11.39 | 2 |

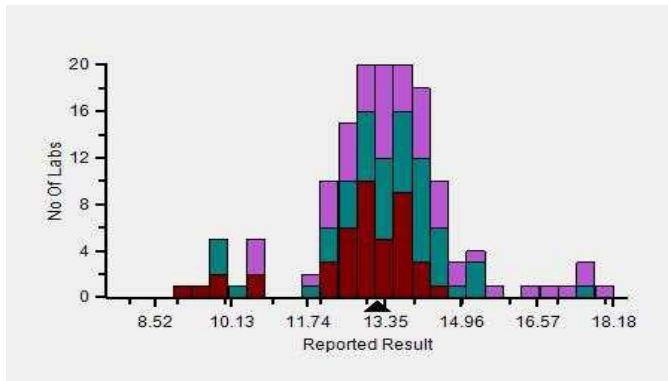
Evaluation Based On - Equipment wise Peer Grouping

| | | | |
|--------------------------|-------|-------------------|------|
| Your Result | 13.20 | SDI / z-Score | 0.03 |
| Assigned Value | 13.14 | Average SDI | 0.11 |
| SDPA | 1.650 | Uncertainty of AV | 0.28 |
| Standard Unit Result Val | 13.20 | %DEV | 4.26 |

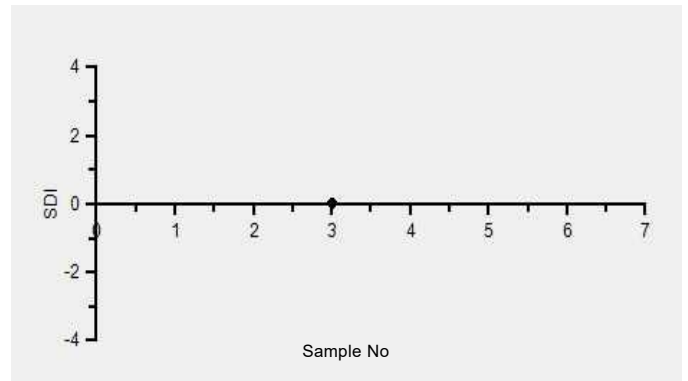
Note : # - Not evaluated / Bimodal distribution

X : SDI more than 4

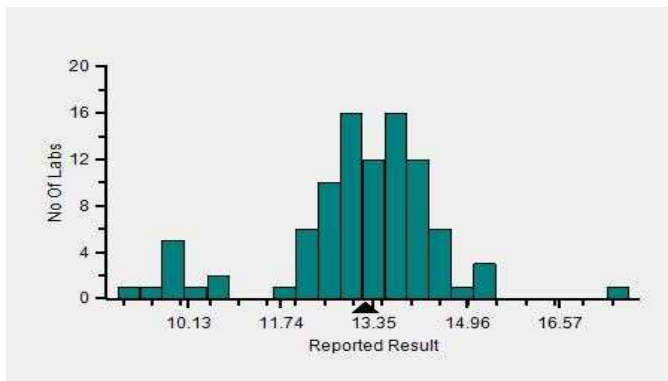
Frequency Histogram



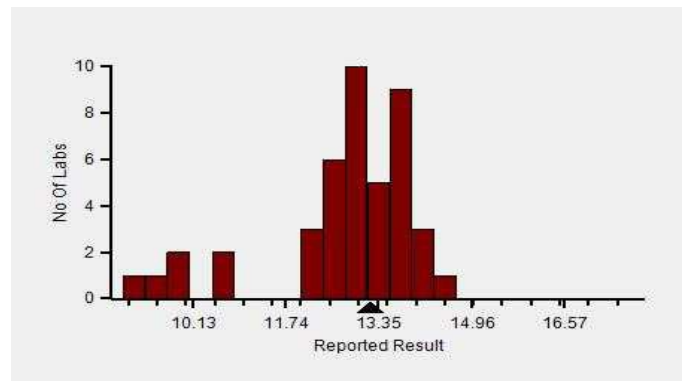
Z-Score Trend - Within Round



Frequency Histogram Your Method



Frequency Histogram Your Analyzer



Lab : 1052

Cycle No : 230310

Lab Name : KRSNAA DIAGNOSTICS LTD, PATHANKOT

Sample No : 03

Report Date : 19/12/2023

Sample Date : 07/10/2023

Frequency Histogram Your Method



Note : SDI with * marked are not considered for evaluation

Comments :

Haematology - CBC, Hematocrit

| | | N | Mean | SD | CV% | Excluded |
|------------------------|----------------------------|-----------|--------------|-------------|--------------|----------|
| | All Analyzer | 163 | 13.35 | 1.61 | 12.05 | 9 |
| Your Analyzer : | Horiba Yumizen H550 | 46 | 12.66 | 1.44 | 11.39 | 2 |
| | Horiba Yumizen H500 | 17 | 13.36 | 1.58 | 11.79 | 1 |
| | Erba ELite 580 | 13 | 13.54 | 0.44 | 3.23 | - |
| | Mindray BC-5000 | 12 | 13.98 | 1.38 | 9.86 | - |
| | Horiba ABX Pentra XL 80 | 7 | 15.42 | 2.57 | 16.68 | 1 |
| | Nihon Kohden Celltac Alpha | 6 | 13.87 | 1.02 | 7.35 | - |
| | Beckman Coulter DxH 560 | 5 | 13.30 | 0.27 | 1.99 | - |
| | Horiba ABX Micros ES 60 | 5 | 12.18 | 0.41 | 3.38 | 1 |

Remarks: Interpretation of your reports

- If your SDI lies between +/- 2.0 SDI then your results are well within limits.
- If your SDI lies between +/-2.0 to 2.99 SDI then it is a warning alert flag.
- If your SDI is +/- 3.0 SDI or more then it is an action alert flag.

Interpretation when an analyte is reported for multiple samples in a Round:

a) Reported on 2 samples:

- Two out of two pass - Acceptable performance
- One out of two pass - Review for random error & take action if appropriate
- Both failed - Unacceptable performance, Review for systematic error

b) Reported on 3 samples:

- All pass - Acceptable performance
- Two out of three pass - Review for random error & take action if appropriate
- One out of three pass - Unacceptable performance, Review for systematic error
- All failed - Unacceptable performance, Review for systematic error



Lab : 1052

Cycle No : 230310

Lab Name : KRSNAA DIAGNOSTICS LTD, PATHANKOT

Sample No : 03

Report Date : 19/12/2023

Sample Date : 07/10/2023

Haematology - CBC, MCH (Mean Corpuscular Hb), pg

Comparative Statistics

| | N | Mean | SD | CV% | Excluded |
|---------------------------------------|-----|-------|------|------|----------|
| All Methods | 170 | 27.27 | 2.32 | 8.50 | 4 |
| Calculated - (Your Method) | 118 | 27.28 | 2.32 | 8.52 | 3 |
| Horiba Yumizen H550 - (Your Analyzer) | 45 | 26.65 | 1.97 | 7.39 | 1 |

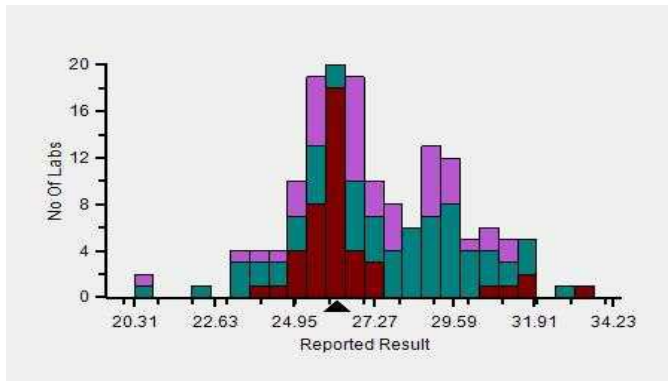
Evaluation Based On - Equipment wise Peer Grouping

| | | | |
|--------------------------|-------|-------------------|-------|
| Your Result | 26.20 | SDI / z-Score | 0.07 |
| Assigned Value | 26.03 | Average SDI | 0.04 |
| SDPA | 2.490 | Uncertainty of AV | 0.41 |
| Standard Unit Result Val | 26.20 | %DEV | -1.67 |

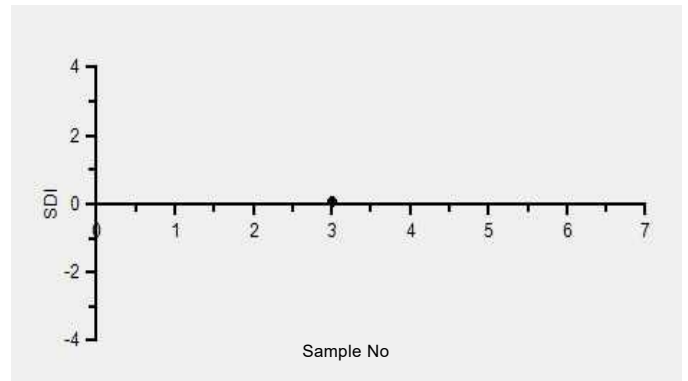
Note : # - Not evaluated / Bimodal distribution

X : SDI more than 4

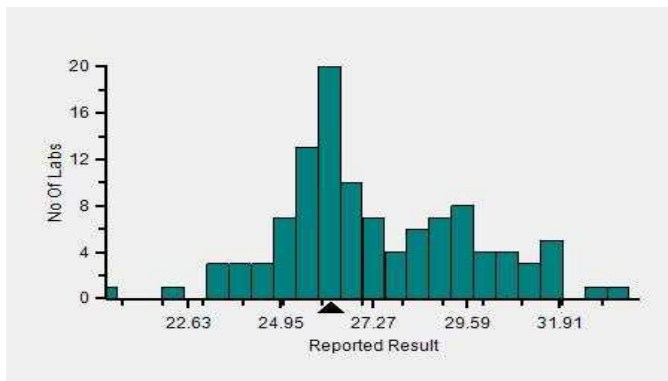
Frequency Histogram



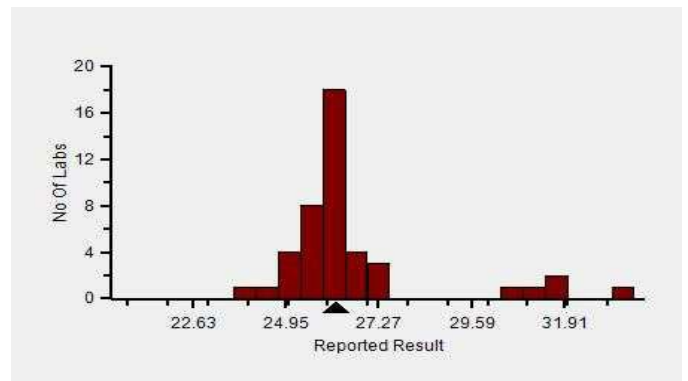
Z-Score Trend - Within Round



Frequency Histogram Your Method



Frequency Histogram Your Analyzer



Lab : 1052

Cycle No : 230310

Lab Name : KRSNAA DIAGNOSTICS LTD, PATHANKOT

Sample No : 03

Report Date : 19/12/2023

Sample Date : 07/10/2023

Frequency Histogram Your Method



Note : SDI with * marked are not considered for evaluation

Comments :

| Haematology - CBC, MCH (Mean Corpuscular Hb) | | | | | | |
|--|----------------------------|-----------|--------------|-------------|-------------|----------|
| | | N | Mean | SD | CV% | Excluded |
| | All Analyzer | 170 | 27.27 | 2.32 | 8.50 | 4 |
| Your Analyzer : | Horiba Yumizen H550 | 45 | 26.65 | 1.97 | 7.39 | 1 |
| | Horiba Yumizen H500 | 18 | 26.51 | 1.78 | 6.73 | - |
| | Erba ELite 580 | 13 | 26.53 | 0.45 | 1.68 | - |
| | Mindray BC-5000 | 12 | 29.88 | 0.96 | 3.21 | - |
| | Horiba ABX Pentra XL 80 | 8 | 28.06 | 3.43 | 12.23 | 1 |
| | Nihon Kohden Celltac Alpha | 6 | 26.71 | 2.52 | 9.45 | - |
| | Sysmex XP-100 | 5 | 27.55 | 1.98 | 7.19 | - |
| | Beckman Coulter DxH 560 | 5 | 23.86 | 0.48 | 2.00 | - |

Remarks: Interpretation of your reports

- a) If your SDI lies between +/- 2.0 SDI then your results are well within limits.
- b) If your SDI lies between +/-2.0 to 2.99 SDI then it is a warning alert flag.
- c) If your SDI is +/- 3.0 SDI or more then it is an action alert flag.

Interpretation when an analyte is reported for multiple samples in a Round:

- a) Reported on 2 samples:
 - Two out of two pass - Acceptable performance
 - One out of two pass - Review for random error & take action if appropriate
 - Both failed - Unacceptable performance, Review for systematic error
- b) Reported on 3 samples:
 - All pass - Acceptable performance
 - Two out of three pass - Review for random error & take action if appropriate
 - One out of three pass - Unacceptable performance, Review for systematic error
 - All failed - Unacceptable performance, Review for systematic error



Lab : 1052

Cycle No : 230310

Lab Name : KRSNAA DIAGNOSTICS LTD, PATHANKOT

Sample No : 03

Report Date : 19/12/2023

Sample Date : 07/10/2023

Haematology - CBC, MCHC (Mean Corpuscular Hb Concentration), g/dL

Comparative Statistics

| | N | Mean | SD | CV% | Excluded |
|---------------------------------------|-----|-------|------|-------|----------|
| All Methods | 170 | 21.53 | 2.56 | 11.88 | 6 |
| Calculated - (Your Method) | 117 | 21.22 | 2.26 | 10.65 | 5 |
| Horiba Yumizen H550 - (Your Analyzer) | 44 | 20.97 | 2.05 | 9.79 | 2 |

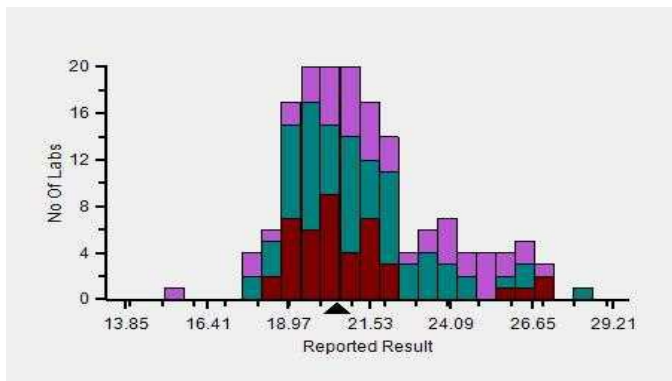
Evaluation Based On - Equipment wise Peer Grouping

| | | | |
|--------------------------|-------|-------------------|-------|
| Your Result | 20.50 | SDI / z-Score | -0.01 |
| Assigned Value | 20.53 | Average SDI | -0.12 |
| SDPA | 2.300 | Uncertainty of AV | 0.38 |
| Standard Unit Result Val | 20.50 | %DEV | -2.25 |

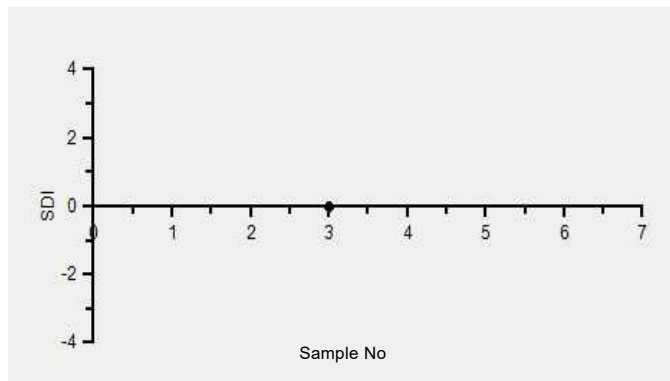
Note : # - Not evaluated / Bimodal distribution

X : SDI more than 4

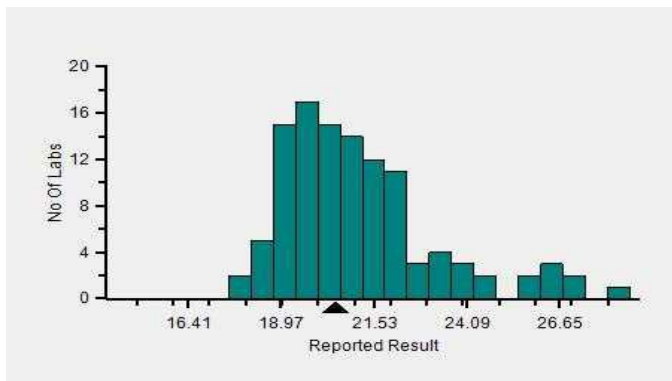
Frequency Histogram



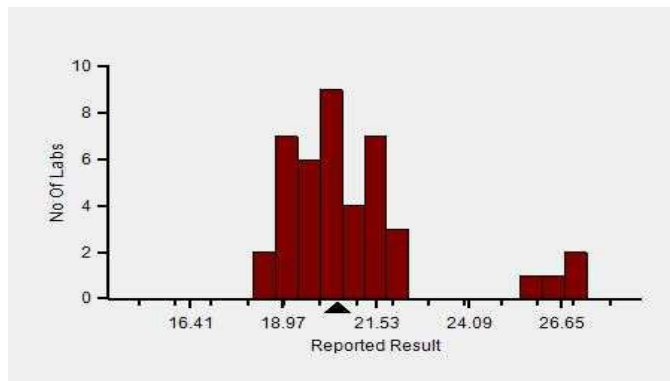
Z-Score Trend - Within Round



Frequency Histogram Your Method



Frequency Histogram Your Analyzer



Lab : 1052

Cycle No : 230310

Lab Name : KRSNAA DIAGNOSTICS LTD, PATHANKOT

Sample No : 03

Report Date : 19/12/2023

Sample Date : 07/10/2023

Frequency Histogram Your Method



Note : SDI with * marked are not considered for evaluation

Comments :

| Haematology - CBC, MCHC (Mean Corpuscular Hb Concentration) | | | | | | |
|---|----------------------------|-----------|--------------|-------------|-------------|----------|
| | | N | Mean | SD | CV% | Excluded |
| | All Analyzer | 170 | 21.53 | 2.56 | 11.88 | 6 |
| Your Analyzer : | Horiba Yumizen H550 | 44 | 20.97 | 2.05 | 9.79 | 2 |
| | Horiba Yumizen H500 | 19 | 20.98 | 2.10 | 9.99 | - |
| | Erba ELite 580 | 13 | 19.92 | 0.57 | 2.84 | - |
| | Mindray BC-5000 | 12 | 21.67 | 0.81 | 3.73 | 1 |
| | Horiba ABX Pentra XL 80 | 8 | 26.19 | 3.24 | 12.38 | - |
| | Nihon Kohden Celltac Alpha | 6 | 21.10 | 3.19 | 15.10 | - |
| | Sysmex XP-100 | 5 | 24.28 | 1.59 | 6.56 | - |
| | Beckman Coulter DxH 560 | 5 | 18.60 | 0.70 | 3.74 | - |

Remarks: Interpretation of your reports

- a) If your SDI lies between +/- 2.0 SDI then your results are well within limits.
- b) If your SDI lies between +/-2.0 to 2.99 SDI then it is a warning alert flag.
- c) If your SDI is +/- 3.0 SDI or more then it is an action alert flag.

Interpretation when an analyte is reported for multiple samples in a Round:

- a) Reported on 2 samples:
 - Two out of two pass - Acceptable performance
 - One out of two pass - Review for random error & take action if appropriate
 - Both failed - Unacceptable performance, Review for systematic error
- b) Reported on 3 samples:
 - All pass - Acceptable performance
 - Two out of three pass - Review for random error & take action if appropriate
 - One out of three pass - Unacceptable performance, Review for systematic error
 - All failed - Unacceptable performance, Review for systematic error



Lab : 1052

Cycle No : 230310

Lab Name : KRSNAA DIAGNOSTICS LTD, PATHANKOT

Sample No : 03

Report Date : 19/12/2023

Sample Date : 07/10/2023

Haematology - CBC, MCV (Mean Corpuscular Volume), fL

Comparative Statistics

| | N | Mean | SD | CV% | Excluded |
|---------------------------------------|-----|--------|-------|------|----------|
| All Methods | 170 | 127.18 | 10.21 | 8.03 | 1 |
| Calculated - (Your Method) | 98 | 128.18 | 10.24 | 7.99 | -- |
| Horiba Yumizen H550 - (Your Analyzer) | 45 | 125.66 | 7.74 | 6.16 | -- |

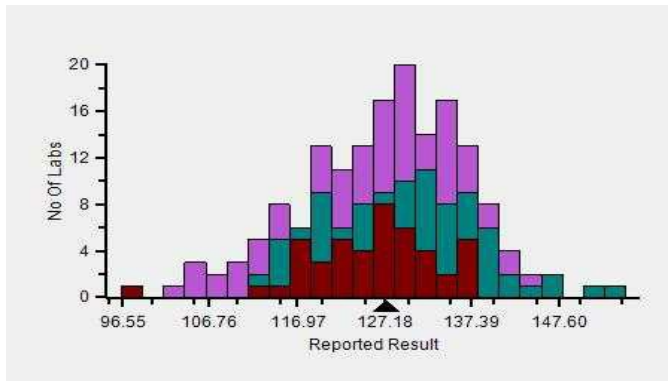
Evaluation Based On - Equipment wise Peer Grouping

| | | | |
|---------------------------------|--------|--------------------------|------|
| Your Result | 127.40 | SDI / z-Score | 0.09 |
| Assigned Value | 126.21 | Average SDI | 0.16 |
| SDPA | 13.200 | Uncertainty of AV | 2.02 |
| Standard Unit Result Val | 127.40 | %DEV | 1.38 |

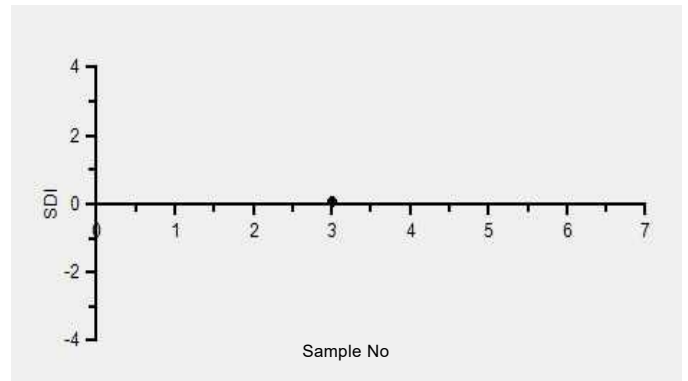
Note : # - Not evaluated / Bimodal distribution

X : SDI more than 4

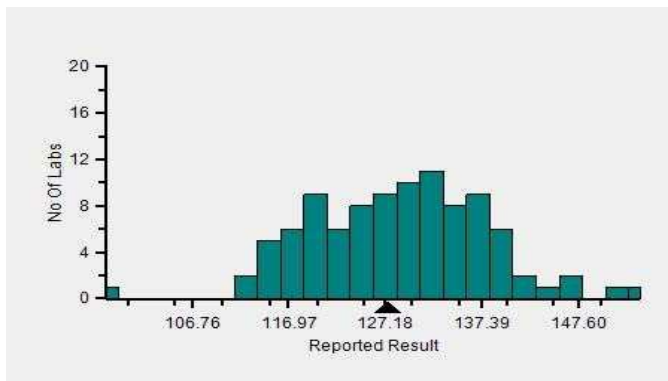
Frequency Histogram



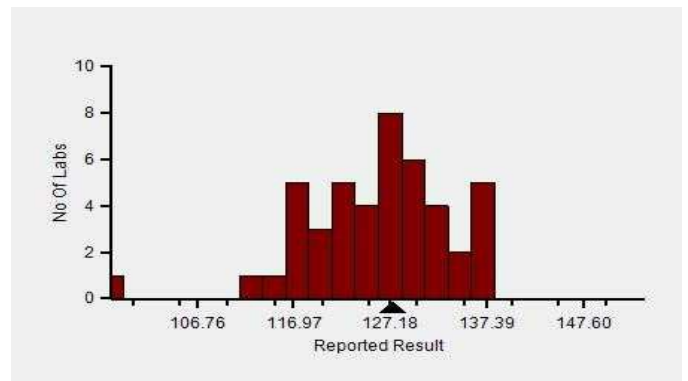
Z-Score Trend - Within Round



Frequency Histogram Your Method



Frequency Histogram Your Analyzer



Lab : 1052

Cycle No : 230310

Lab Name : KRSNAA DIAGNOSTICS LTD, PATHANKOT

Sample No : 03

Report Date : 19/12/2023

Sample Date : 07/10/2023

Frequency Histogram Your Method



Note : SDI with * marked are not considered for evaluation

Comments :

| Haematology - CBC, MCV (Mean Corpuscular Volume) | | N | Mean | SD | CV% | Excluded |
|--|----------------------------|-----------|---------------|-------------|-------------|----------|
| | All Analyzer | 170 | 127.18 | 10.21 | 8.03 | 1 |
| Your Analyzer : | Horiba Yumizen H550 | 45 | 125.66 | 7.74 | 6.16 | - |
| | Horiba Yumizen H500 | 18 | 128.24 | 4.71 | 3.67 | - |
| | Erba ELite 580 | 13 | 133.26 | 3.51 | 2.63 | - |
| | Mindray BC-5000 | 12 | 138.14 | 3.63 | 2.63 | 1 |
| | Horiba ABX Pentra XL 80 | 8 | 113.75 | 8.57 | 7.53 | - |
| | Nihon Kohden Celltac Alpha | 6 | 127.61 | 9.28 | 7.27 | - |
| | Sysmex XP-100 | 5 | 113.34 | 2.03 | 1.79 | - |
| | Beckman Coulter DxH 560 | 5 | 128.64 | 2.23 | 1.73 | - |

Remarks: Interpretation of your reports

- If your SDI lies between +/- 2.0 SDI then your results are well within limits.
- If your SDI lies between +/-2.0 to 2.99 SDI then it is a warning alert flag.
- If your SDI is +/- 3.0 SDI or more then it is an action alert flag.

Interpretation when an analyte is reported for multiple samples in a Round:

- Reported on 2 samples:
 - Two out of two pass - Acceptable performance
 - One out of two pass - Review for random error & take action if appropriate
 - Both failed - Unacceptable performance, Review for systematic error
- Reported on 3 samples:
 - All pass - Acceptable performance
 - Two out of three pass - Review for random error & take action if appropriate
 - One out of three pass - Unacceptable performance, Review for systematic error
 - All failed - Unacceptable performance, Review for systematic error



Lab : 1052

Cycle No : 230310

Lab Name : KRSNAA DIAGNOSTICS LTD, PATHANKOT

Sample No : 03

Report Date : 19/12/2023

Sample Date : 07/10/2023

Haematology - CBC, Platelet Count, 1000/ μ L

Comparative Statistics

| | N | Mean | SD | CV% | Excluded |
|---------------------------------------|-----|-------|-------|-------|----------|
| All Methods | 170 | 83.98 | 16.56 | 19.71 | 27 |
| Impedance - (Your Method) | 159 | 83.87 | 15.70 | 18.72 | 26 |
| Horiba Yumizen H550 - (Your Analyzer) | 46 | 87.19 | 11.88 | 13.63 | 4 |

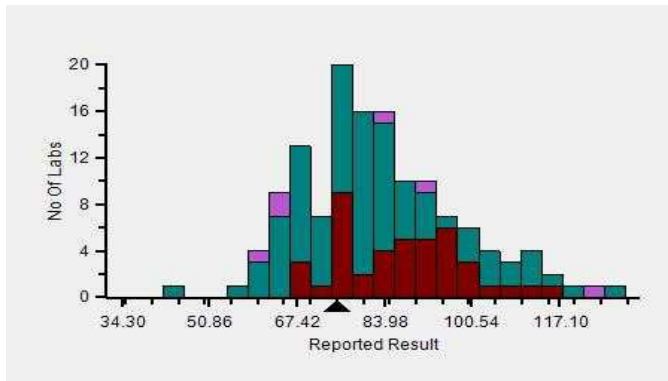
Evaluation Based On - Equipment wise Peer Grouping

| | | | |
|--------------------------|--------|-------------------|--------|
| Your Result | 75.00 | SDI / z-Score | -0.46 |
| Assigned Value | 81.43 | Average SDI | -0.24 |
| SDPA | 14.055 | Uncertainty of AV | 2.27 |
| Standard Unit Result Val | 75.00 | %DEV | -13.98 |

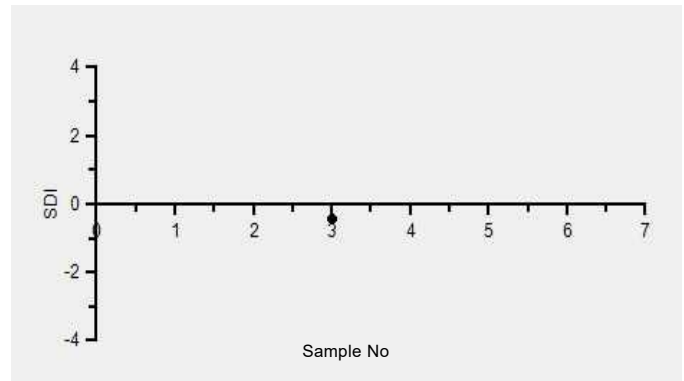
Note : # - Not evaluated / Bimodal distribution

X : SDI more than 4

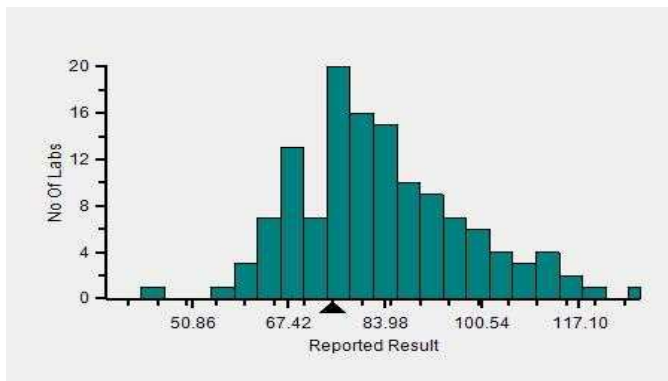
Frequency Histogram



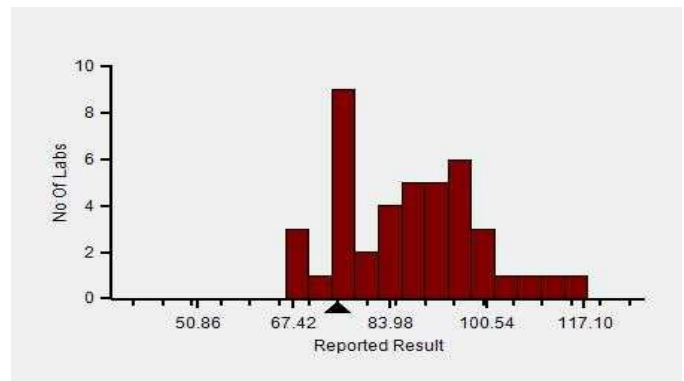
Z-Score Trend - Within Round



Frequency Histogram Your Method



Frequency Histogram Your Analyzer



Lab : 1052

Cycle No : 230310

Lab Name : KRSNAA DIAGNOSTICS LTD, PATHANKOT

Sample No : 03

Report Date : 19/12/2023

Sample Date : 07/10/2023

Frequency Histogram Your Method



Note : SDI with * marked are not considered for evaluation

Comments :

| Haematology - CBC, Platelet Count | | | | | | |
|-----------------------------------|----------------------------|-----------|--------------|--------------|--------------|----------|
| | | N | Mean | SD | CV% | Excluded |
| | All Analyzer | 170 | 83.98 | 16.56 | 19.71 | 27 |
| Your Analyzer : | Horiba Yumizen H550 | 46 | 87.19 | 11.88 | 13.63 | 4 |
| | Horiba Yumizen H500 | 17 | 74.44 | 17.84 | 23.97 | 1 |
| | Erba ELite 580 | 13 | 80.17 | 4.71 | 5.87 | 1 |
| | Mindray BC-5000 | 12 | 79.46 | 6.02 | 7.58 | 1 |
| | Horiba ABX Pentra XL 80 | 8 | 134.00 | 10.86 | 8.11 | 4 |
| | Nihon Kohden Celltac Alpha | 6 | 77.93 | 12.12 | 15.56 | - |
| | Sysmex XP-100 | 5 | 71.25 | 8.06 | 11.31 | 1 |
| | Beckman Coulter DxH 560 | 5 | 83.94 | 3.00 | 3.58 | - |

Remarks: Interpretation of your reports

- a) If your SDI lies between +/- 2.0 SDI then your results are well within limits.
- b) If your SDI lies between +/-2.0 to 2.99 SDI then it is a warning alert flag.
- c) If your SDI is +/- 3.0 SDI or more then it is an action alert flag.

Interpretation when an analyte is reported for multiple samples in a Round:

- a) Reported on 2 samples:
 - Two out of two pass - Acceptable performance
 - One out of two pass - Review for random error & take action if appropriate
 - Both failed - Unacceptable performance, Review for systematic error
- b) Reported on 3 samples:
 - All pass - Acceptable performance
 - Two out of three pass - Review for random error & take action if appropriate
 - One out of three pass - Unacceptable performance, Review for systematic error
 - All failed - Unacceptable performance, Review for systematic error



Lab : 1052

Cycle No : 230310

Lab Name : KRSNAA DIAGNOSTICS LTD, PATHANKOT

Sample No : 03

Report Date : 19/12/2023

Sample Date : 07/10/2023

Haematology - CBC, RDW CV%, %

Comparative Statistics

| | N | Mean | SD | CV% | Excluded |
|---------------------------------------|-----|-------|------|-------|----------|
| All Methods | 161 | 27.35 | 6.33 | 23.16 | 8 |
| Calculated - (Your Method) | 144 | 27.07 | 6.33 | 23.36 | 7 |
| Horiba Yumizen H550 - (Your Analyzer) | 45 | 24.07 | 4.22 | 17.54 | 2 |

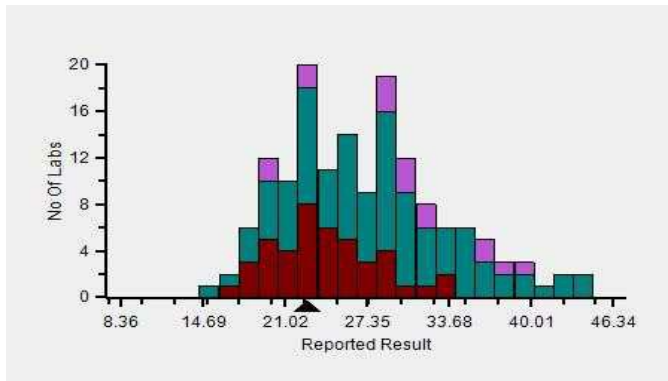
Evaluation Based On - Equipment wise Peer Grouping

| | | | |
|--------------------------|-------|-------------------|-------|
| Your Result | 22.70 | SDI / z-Score | -0.26 |
| Assigned Value | 23.70 | Average SDI | -0.38 |
| SDPA | 3.830 | Uncertainty of AV | 0.62 |
| Standard Unit Result Val | 22.70 | %DEV | -5.71 |

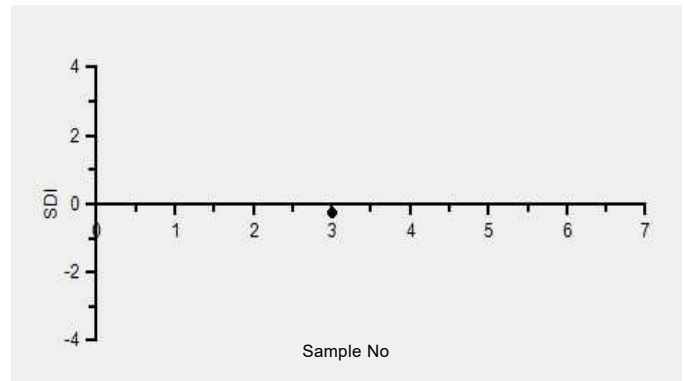
Note : # - Not evaluated / Bimodal distribution

X : SDI more than 4

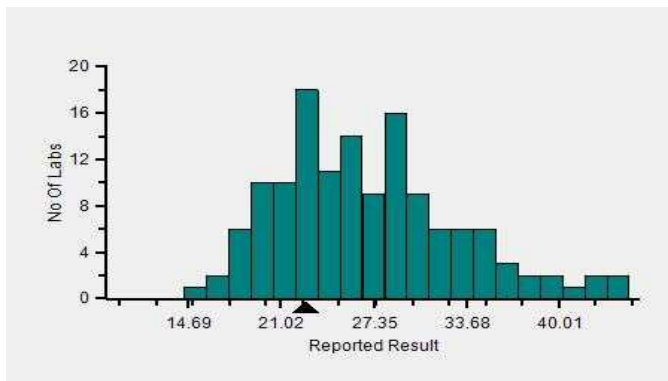
Frequency Histogram



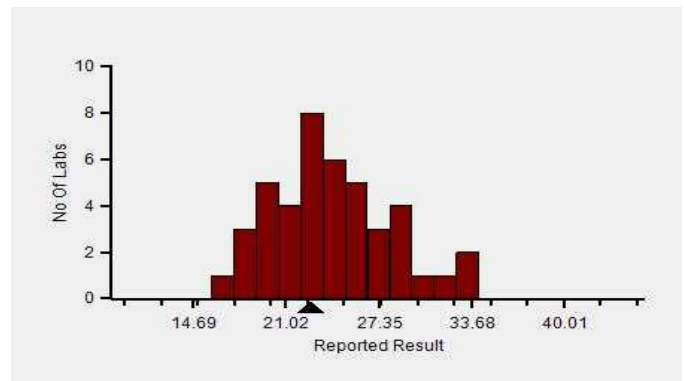
Z-Score Trend - Within Round



Frequency Histogram Your Method



Frequency Histogram Your Analyzer



Lab : 1052

Cycle No : 230310

Lab Name : KRSNAA DIAGNOSTICS LTD, PATHANKOT

Sample No : 03

Report Date : 19/12/2023

Sample Date : 07/10/2023

Frequency Histogram Your Method



Note : SDI with * marked are not considered for evaluation

Comments :

| Haematology - CBC, RDW CV% | | N | Mean | SD | CV% | Excluded |
|----------------------------|----------------------------|-----------|--------------|-------------|--------------|----------|
| | All Analyzer | 161 | 27.35 | 6.33 | 23.16 | 8 |
| Your Analyzer : | Horiba Yumizen H550 | 45 | 24.07 | 4.22 | 17.54 | 2 |
| | Horiba Yumizen H500 | 18 | 22.62 | 3.36 | 14.86 | - |
| | Erba ELite 580 | 13 | 29.67 | 1.94 | 6.55 | 2 |
| | Mindray BC-5000 | 11 | 32.21 | 3.86 | 11.98 | 1 |
| | Horiba ABX Pentra XL 80 | 7 | 21.04 | 1.70 | 8.09 | - |
| | Nihon Kohden Celltac Alpha | 6 | 32.35 | 5.77 | 17.84 | - |
| | Beckman Coulter DxH 560 | 5 | 35.90 | 5.39 | 15.03 | - |
| | Avantor H 33-S | 5 | 30.64 | 4.32 | 14.09 | - |

Remarks: Interpretation of your reports

- a) If your SDI lies between +/- 2.0 SDI then your results are well within limits.
- b) If your SDI lies between +/-2.0 to 2.99 SDI then it is a warning alert flag.
- c) If your SDI is +/- 3.0 SDI or more then it is an action alert flag.

Interpretation when an analyte is reported for multiple samples in a Round:

- a) Reported on 2 samples:
 - Two out of two pass - Acceptable performance
 - One out of two pass - Review for random error & take action if appropriate
 - Both failed - Unacceptable performance, Review for systematic error
- b) Reported on 3 samples:
 - All pass - Acceptable performance
 - Two out of three pass - Review for random error & take action if appropriate
 - One out of three pass - Unacceptable performance, Review for systematic error
 - All failed - Unacceptable performance, Review for systematic error



Lab : 1052

Cycle No : 230310

Lab Name : KRSNAA DIAGNOSTICS LTD, PATHANKOT

Sample No : 03

Report Date : 19/12/2023

Sample Date : 07/10/2023

Haematology - CBC, Total Leucocytes (WBC) count, / μ l

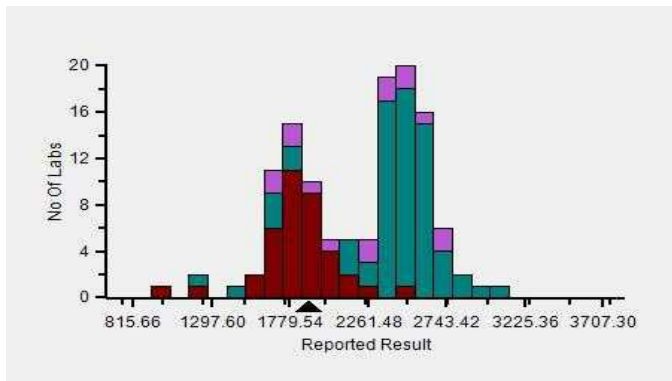
Comparative Statistics

| | N | Mean | SD | CV% | Excluded |
|---------------------------------------|-----|----------|--------|-------|----------|
| All Methods | 170 | 2,261.48 | 481.94 | 21.31 | 42 |
| Impedance - (Your Method) | 146 | 2,262.87 | 500.19 | 22.10 | 38 |
| Horiba Yumizen H550 - (Your Analyzer) | 45 | 1,835.53 | 252.65 | 13.76 | 7 |

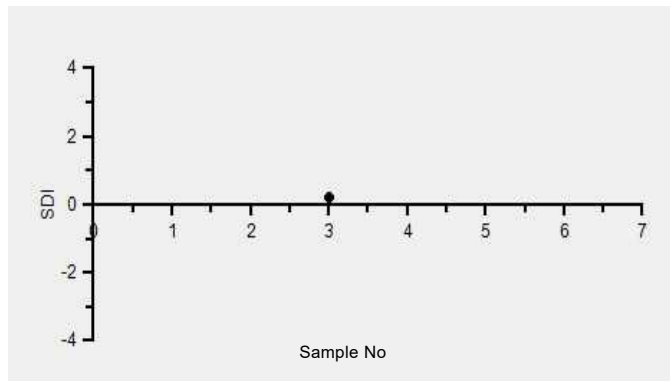
| | | | |
|---------------------------------|----------|--------------------------|-------|
| Your Result | 1.90 | SDI / z-Score | 0.23 |
| Assigned Value | 1,834.53 | Average SDI | 0.46 |
| SDPA | 286.500 | Uncertainty of AV | 52.80 |
| Standard Unit Result Val | 1,900.00 | %DEV | 3.51 |

Note : # - Not evaluated / Bimodal distribution
X : SDI more than 4

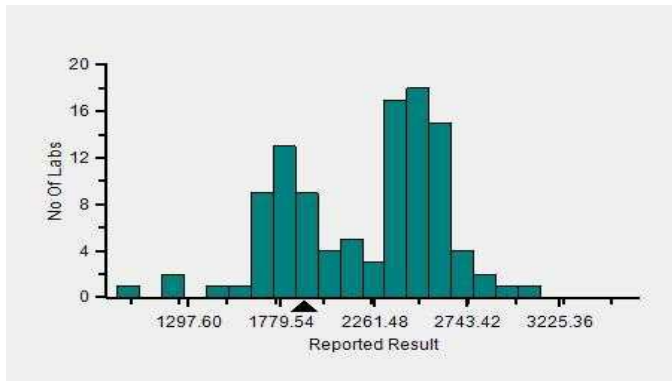
Frequency Histogram



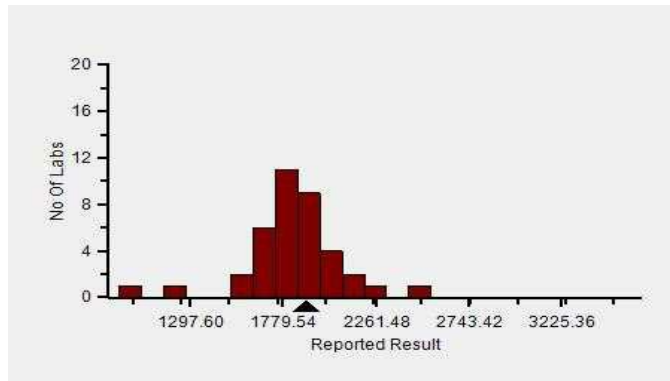
Z-Score Trend - Within Round



Frequency Histogram Your Method



Frequency Histogram Your Analyzer



Lab : 1052

Cycle No : 230310

Lab Name : KRSNAA DIAGNOSTICS LTD, PATHANKOT

Sample No : 03

Report Date : 19/12/2023

Sample Date : 07/10/2023

Frequency Histogram Your Method



Note : SDI with * marked are not considered for evaluation

Comments :

| Haematology - CBC, Total Leucocytes (WBC) count | | | | | | |
|---|----------------------------|-----------|-----------------|---------------|--------------|----------|
| | | N | Mean | SD | CV% | Excluded |
| | All Analyzer | 170 | 2,261.48 | 481.94 | 21.31 | 42 |
| Your Analyzer : | Horiba Yumizen H550 | 45 | 1,835.53 | 252.65 | 13.76 | 7 |
| | Horiba Yumizen H500 | 18 | 1,859.29 | 375.10 | 20.17 | 4 |
| | Erba ELite 580 | 13 | 2,500.00 | 58.55 | 2.34 | 5 |
| | Mindray BC-5000 | 12 | 2,525.46 | 206.46 | 8.18 | 1 |
| | Horiba ABX Pentra XL 80 | 8 | 4,400.00 | 0.00 | 0.00 | 6 |
| | Nihon Kohden Celltac Alpha | 6 | 2,548.00 | 97.57 | 3.83 | 1 |
| | Sysmex XP-100 | 5 | 2,500.00 | 264.58 | 10.58 | 2 |
| | Beckman Coulter DxH 560 | 5 | 2,456.00 | 69.14 | 2.82 | - |

Remarks: Interpretation of your reports

- a) If your SDI lies between +/- 2.0 SDI then your results are well within limits.
- b) If your SDI lies between +/-2.0 to 2.99 SDI then it is a warning alert flag.
- c) If your SDI is +/- 3.0 SDI or more then it is an action alert flag.

Interpretation when an analyte is reported for multiple samples in a Round:

- a) Reported on 2 samples:
 - Two out of two pass - Acceptable performance
 - One out of two pass - Review for random error & take action if appropriate
 - Both failed - Unacceptable performance, Review for systematic error
- b) Reported on 3 samples:
 - All pass - Acceptable performance
 - Two out of three pass - Review for random error & take action if appropriate
 - One out of three pass - Unacceptable performance, Review for systematic error
 - All failed - Unacceptable performance, Review for systematic error

Dr. Puneet Kumar Nigam

Dr Puneet Kumar Nigam
PT coordinator & Technical Manager, MHL EQAS
Unit No. 409-416.
Commercial Building - 1A
Kohinoor Mall, Kirol Road, Kurla (W),
Mumbai - 400070

This is a computer generated report hence signature is not required



PC-1022

Lab : 1052

Cycle No : 230310

Lab Name : KRSNAA DIAGNOSTICS LTD, PATHANKOT

Sample No : 04

Report Date : 19/12/2023

Sample Date : 07/10/2023

Haematology - CBC, Erythrocyte (RBC) Count, mill/cu.mm

Comparative Statistics

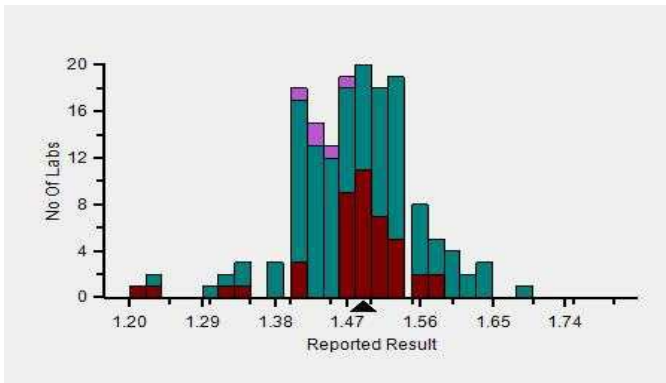
| | N | Mean | SD | CV% | Excluded |
|---------------------------------------|-----|------|------|------|----------|
| All Methods | 169 | 1.47 | 0.09 | 6.00 | 6 |
| Impedance - (Your Method) | 165 | 1.47 | 0.09 | 6.20 | 5 |
| Horiba Yumizen H550 - (Your Analyzer) | 47 | 1.45 | 0.12 | 8.29 | 1 |

Evaluation Based On - Equipment wise Peer Grouping

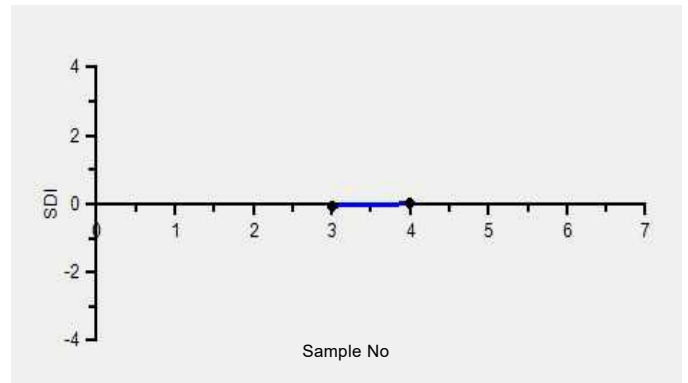
| | | | |
|--------------------------|-------|-------------------|-------|
| Your Result | 1.49 | SDI / z-Score | 0.01 |
| Assigned Value | 1.49 | Average SDI | -0.02 |
| SDPA | 0.160 | Uncertainty of AV | 0.03 |
| Standard Unit Result Val | 1.49 | %DEV | 2.97 |

Note : # - Not evaluated / Bimodal distribution
X : SDI more than 4

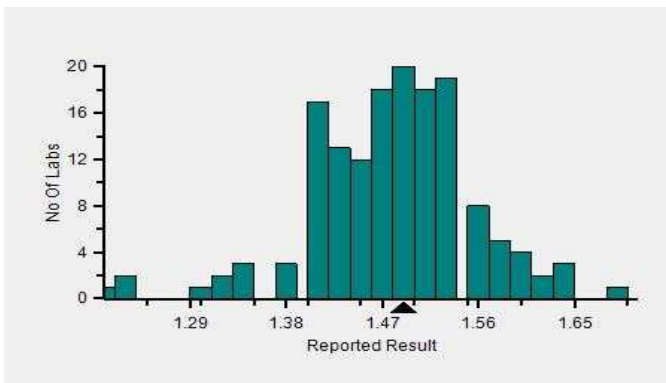
Frequency Histogram



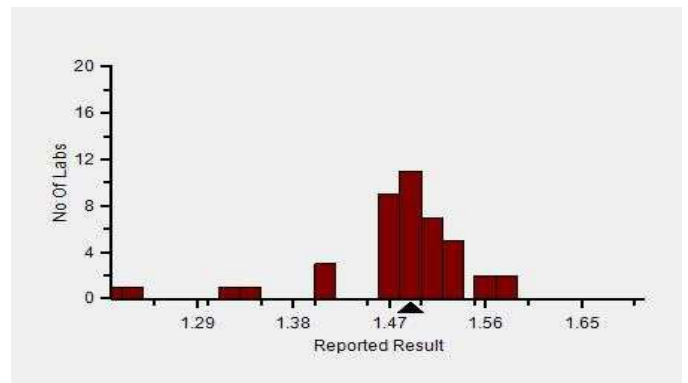
Z-Score Trend - Within Round



Frequency Histogram Your Method



Frequency Histogram Your Analyzer



Lab : 1052

Cycle No : 230310

Lab Name : KRSNAA DIAGNOSTICS LTD, PATHANKOT

Sample No : 04

Report Date : 19/12/2023

Sample Date : 07/10/2023

Frequency Histogram Your Method



Note : SDI with * marked are not considered for evaluation

Comments :

| Haematology - CBC, Erythrocyte (RBC) Count | | | | | | |
|--|----------------------------|-----------|-------------|-------------|-------------|----------|
| | | N | Mean | SD | CV% | Excluded |
| | All Analyzer | 169 | 1.47 | 0.09 | 6.00 | 6 |
| Your Analyzer : | Horiba Yumizen H550 | 47 | 1.45 | 0.12 | 8.29 | 1 |
| | Horiba Yumizen H500 | 17 | 1.46 | 0.07 | 4.88 | 1 |
| | Horiba Yumizen H500 | 17 | 1.46 | 0.07 | 4.88 | 1 |
| | Erba ELite 580 | 13 | 1.45 | 0.06 | 4.21 | - |
| | Mindray BC-5000 | 12 | 1.49 | 0.06 | 3.89 | - |
| | Horiba ABX Pentra XL 80 | 9 | 1.43 | 0.03 | 2.38 | - |
| | Nihon Kohden Celltac Alpha | 6 | 1.54 | 0.06 | 3.70 | - |
| | Sysmex XP-100 | 5 | 1.59 | 0.04 | 2.26 | - |

Remarks: Interpretation of your reports

- a) If your SDI lies between +/- 2.0 SDI then your results are well within limits.
- b) If your SDI lies between +/-2.0 to 2.99 SDI then it is a warning alert flag.
- c) If your SDI is +/- 3.0 SDI or more then it is an action alert flag.

Interpretation when an analyte is reported for multiple samples in a Round:

- a) Reported on 2 samples:
 - Two out of two pass - Acceptable performance
 - One out of two pass - Review for random error & take action if appropriate
 - Both failed - Unacceptable performance, Review for systematic error
- b) Reported on 3 samples:
 - All pass - Acceptable performance
 - Two out of three pass - Review for random error & take action if appropriate
 - One out of three pass - Unacceptable performance, Review for systematic error
 - All failed - Unacceptable performance, Review for systematic error



Lab : 1052

Cycle No : 230310

Lab Name : KRSNAA DIAGNOSTICS LTD, PATHANKOT

Sample No : 04

Report Date : 19/12/2023

Sample Date : 07/10/2023

Haematology - CBC, Haemoglobin, g/dL

Comparative Statistics

| | N | Mean | SD | CV% | Excluded |
|---------------------------------------|-----|------|------|------|----------|
| All Methods | 169 | 4.22 | 0.28 | 6.52 | 4 |
| Photometric - (Your Method) | 45 | 4.11 | 0.29 | 7.03 | 3 |
| Horiba Yumizen H550 - (Your Analyzer) | 47 | 4.05 | 0.12 | 2.89 | 1 |

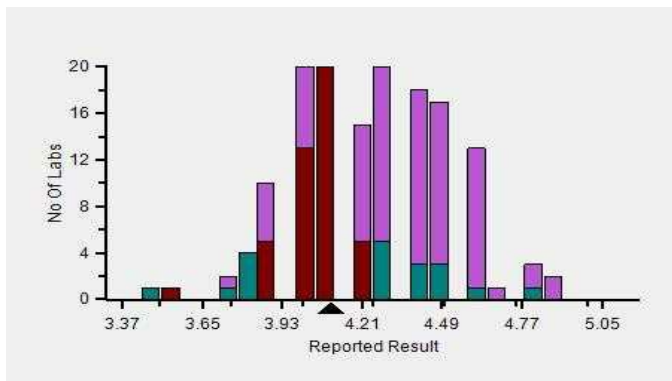
Evaluation Based On - Equipment wise Peer Grouping

| | | | |
|--------------------------|-------|-------------------|------|
| Your Result | 4.10 | SDI / z-Score | 0.10 |
| Assigned Value | 4.07 | Average SDI | 0.05 |
| SDPA | 0.280 | Uncertainty of AV | 0.04 |
| Standard Unit Result Val | 4.10 | %DEV | 1.31 |

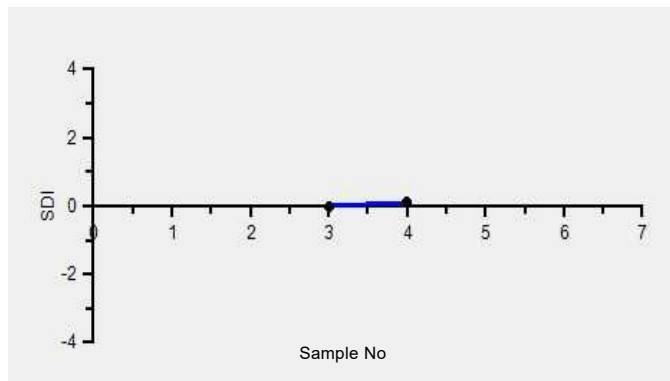
Note : # - Not evaluated / Bimodal distribution

X : SDI more than 4

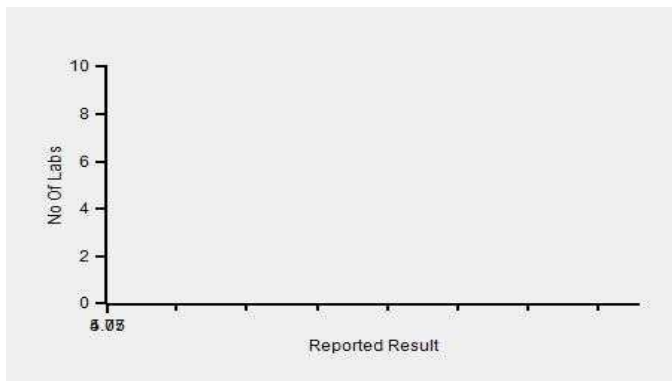
Frequency Histogram



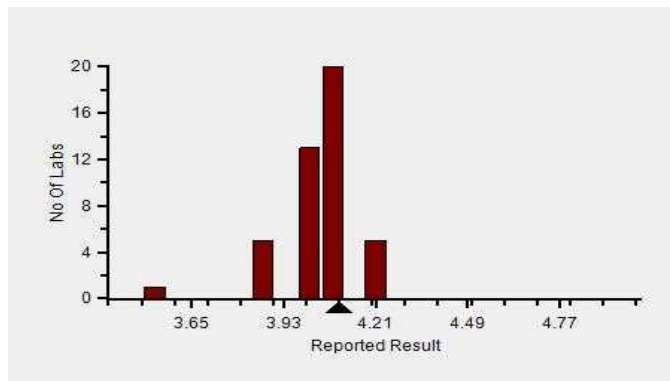
Z-Score Trend - Within Round



Frequency Histogram Your Method



Frequency Histogram Your Analyzer



Lab : 1052

Cycle No : 230310

Lab Name : KRSNAA DIAGNOSTICS LTD, PATHANKOT

Sample No : 04

Report Date : 19/12/2023

Sample Date : 07/10/2023

Frequency Histogram Your Method



Note : SDI with * marked are not considered for evaluation

Comments :

Haematology - CBC, Haemoglobin

| | | N | Mean | SD | CV% | Excluded |
|------------------------|----------------------------|-----------|-------------|-------------|-------------|----------|
| | All Analyzer | 169 | 4.22 | 0.28 | 6.52 | 4 |
| Your Analyzer : | Horiba Yumizen H550 | 47 | 4.05 | 0.12 | 2.89 | 1 |
| | Horiba Yumizen H500 | 17 | 4.03 | 0.21 | 5.24 | 1 |
| | Horiba Yumizen H500 | 17 | 4.03 | 0.21 | 5.24 | 1 |
| | Erba ELite 580 | 13 | 4.30 | 0.20 | 4.74 | - |
| | Horiba ABX Pentra XL 80 | 9 | 4.26 | 0.12 | 2.91 | - |
| | Mindray BC 5000 | 8 | 4.59 | 0.06 | 1.40 | - |
| | Nihon Kohden Celltac Alpha | 6 | 4.39 | 0.13 | 3.05 | - |
| | Sysmex XP-100 | 5 | 4.46 | 0.09 | 2.00 | - |

Remarks: Interpretation of your reports

- a) If your SDI lies between +/- 2.0 SDI then your results are well within limits.
- b) If your SDI lies between +/-2.0 to 2.99 SDI then it is a warning alert flag.
- c) If your SDI is +/- 3.0 SDI or more then it is an action alert flag.

Interpretation when an analyte is reported for multiple samples in a Round:

a) Reported on 2 samples:

- Two out of two pass - Acceptable performance
- One out of two pass - Review for random error & take action if appropriate
- Both failed - Unacceptable performance, Review for systematic error

b) Reported on 3 samples:

- All pass - Acceptable performance
- Two out of three pass - Review for random error & take action if appropriate
- One out of three pass - Unacceptable performance, Review for systematic error
- All failed - Unacceptable performance, Review for systematic error



Lab : 1052

Lab Name : KRSNAA DIAGNOSTICS LTD, PATHANKOT

Report Date : 19/12/2023

Cycle No : 230310

Sample No : 04

Sample Date : 07/10/2023

Haematology - CBC, Hematocrit, %

Comparative Statistics

| | N | Mean | SD | CV% | Excluded |
|---------------------------------------|-----|-------|------|-------|----------|
| All Methods | 162 | 18.52 | 2.30 | 12.42 | 4 |
| Calculated - (Your Method) | 101 | 18.48 | 2.45 | 13.25 | 2 |
| Horiba Yumizen H550 - (Your Analyzer) | 47 | 17.87 | 2.29 | 12.79 | -- |

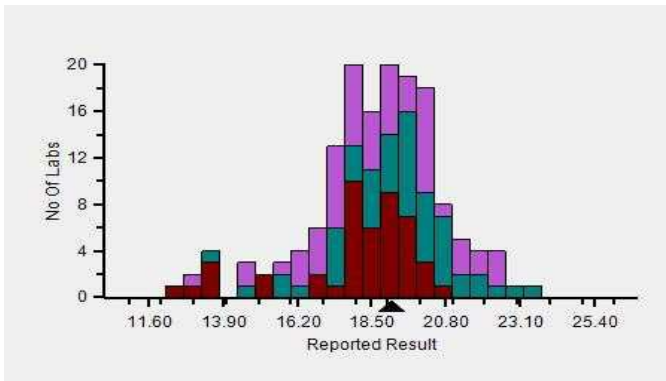
Evaluation Based On - Equipment wise Peer Grouping

| | | | |
|--------------------------|-------|-------------------|------|
| Your Result | 19.10 | SDI / z-Score | 0.18 |
| Assigned Value | 18.57 | Average SDI | 0.11 |
| SDPA | 2.900 | Uncertainty of AV | 0.47 |
| Standard Unit Result Val | 19.10 | %DEV | 6.91 |

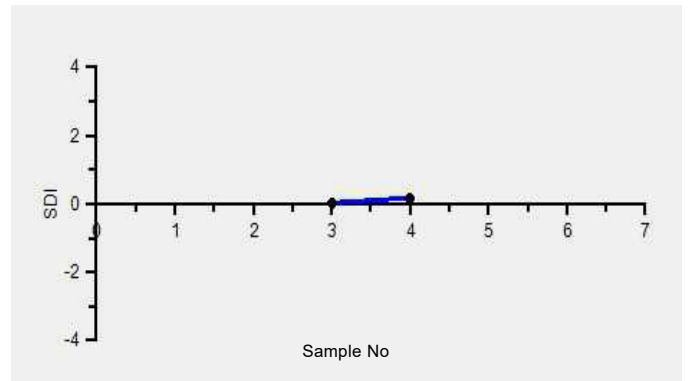
Note : # - Not evaluated / Bimodal distribution

X : SDI more than 4

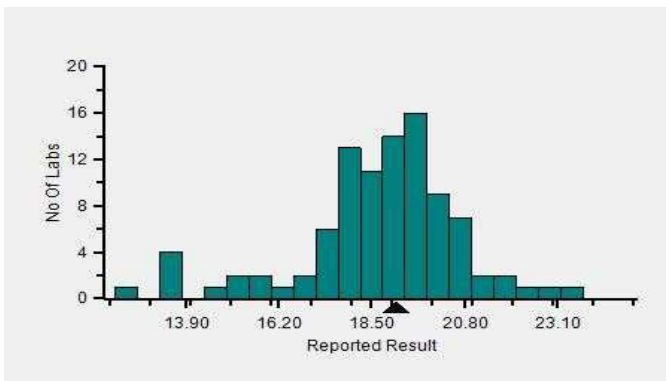
Frequency Histogram



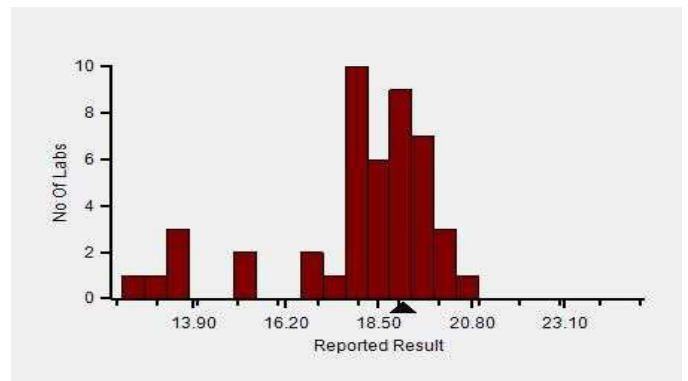
Z-Score Trend - Within Round



Frequency Histogram Your Method



Frequency Histogram Your Analyzer



Lab : 1052

Cycle No : 230310

Lab Name : KRSNAA DIAGNOSTICS LTD, PATHANKOT

Sample No : 04

Report Date : 19/12/2023

Sample Date : 07/10/2023

Frequency Histogram Your Method



Note : SDI with * marked are not considered for evaluation

Comments :

Haematology - CBC, Hematocrit

| | | N | Mean | SD | CV% | Excluded |
|------------------------|----------------------------|-----------|--------------|-------------|--------------|----------|
| | All Analyzer | 162 | 18.52 | 2.30 | 12.42 | 4 |
| Your Analyzer : | Horiba Yumizen H550 | 47 | 17.87 | 2.29 | 12.79 | - |
| | Horiba Yumizen H500 | 17 | 17.92 | 2.09 | 11.69 | - |
| | Horiba Yumizen H500 | 17 | 17.92 | 2.09 | 11.69 | - |
| | Erba ELite 580 | 13 | 19.59 | 1.00 | 5.09 | - |
| | Mindray BC-5000 | 12 | 20.68 | 2.13 | 10.32 | - |
| | Horiba ABX Pentra XL 80 | 8 | 16.31 | 1.91 | 11.71 | - |
| | Nihon Kohden Celltac Alpha | 6 | 19.80 | 1.40 | 7.05 | - |
| | Sysmex XN 350 | 5 | 19.78 | 1.39 | 7.05 | - |

Remarks: Interpretation of your reports

- a) If your SDI lies between +/- 2.0 SDI then your results are well within limits.
- b) If your SDI lies between +/-2.0 to 2.99 SDI then it is a warning alert flag.
- c) If your SDI is +/- 3.0 SDI or more then it is an action alert flag.

Interpretation when an analyte is reported for multiple samples in a Round:

- a) Reported on 2 samples:
 - Two out of two pass - Acceptable performance
 - One out of two pass - Review for random error & take action if appropriate
 - Both failed - Unacceptable performance, Review for systematic error
- b) Reported on 3 samples:
 - All pass - Acceptable performance
 - Two out of three pass - Review for random error & take action if appropriate
 - One out of three pass - Unacceptable performance, Review for systematic error
 - All failed - Unacceptable performance, Review for systematic error



Lab : 1052

Cycle No : 230310

Lab Name : KRSNAA DIAGNOSTICS LTD, PATHANKOT

Sample No : 04

Report Date : 19/12/2023

Sample Date : 07/10/2023

Haematology - CBC, MCH (Mean Corpuscular Hb), pg

Comparative Statistics

| | N | Mean | SD | CV% | Excluded |
|---------------------------------------|-----|-------|------|------|----------|
| All Methods | 169 | 28.76 | 2.07 | 7.18 | 3 |
| Calculated - (Your Method) | 118 | 28.70 | 2.10 | 7.30 | 3 |
| Horiba Yumizen H550 - (Your Analyzer) | 46 | 27.88 | 1.91 | 6.85 | 1 |

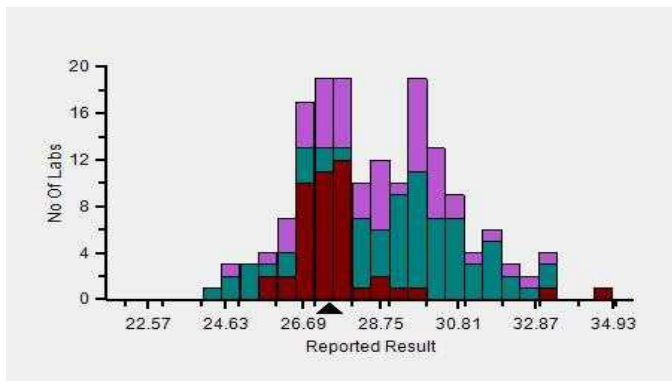
Evaluation Based On - Equipment wise Peer Grouping

| | | | |
|--------------------------|-------|-------------------|-------|
| Your Result | 27.40 | SDI / z-Score | 0.01 |
| Assigned Value | 27.38 | Average SDI | 0.04 |
| SDPA | 2.700 | Uncertainty of AV | 0.44 |
| Standard Unit Result Val | 27.40 | %DEV | -1.73 |

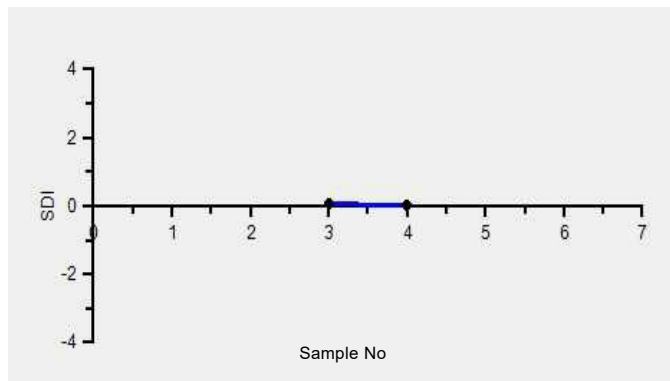
Note : # - Not evaluated / Bimodal distribution

X : SDI more than 4

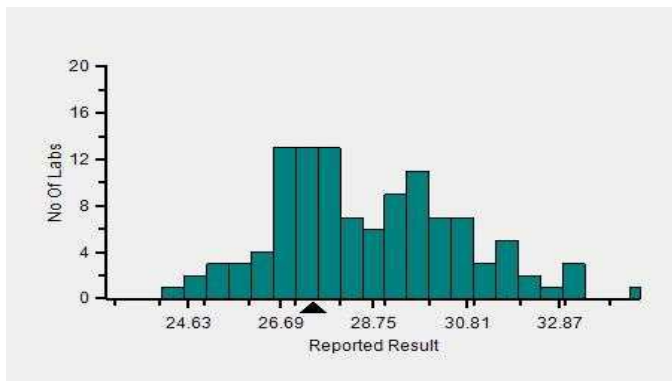
Frequency Histogram



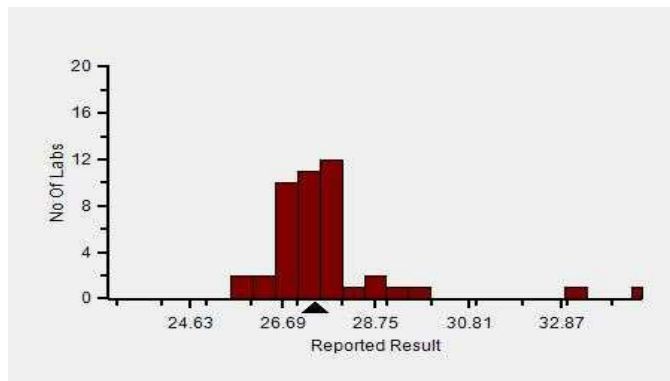
Z-Score Trend - Within Round



Frequency Histogram Your Method



Frequency Histogram Your Analyzer



Lab : 1052

Cycle No : 230310

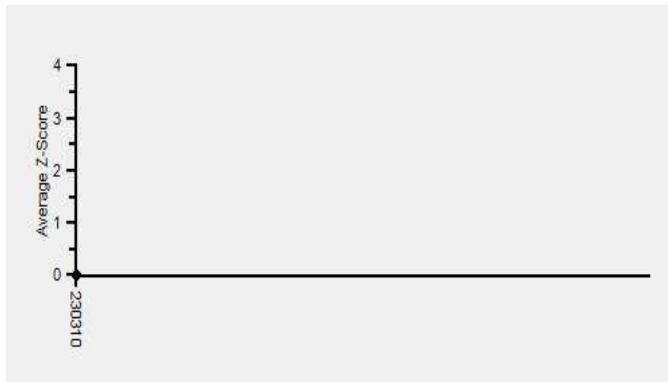
Lab Name : KRSNAA DIAGNOSTICS LTD, PATHANKOT

Sample No : 04

Report Date : 19/12/2023

Sample Date : 07/10/2023

Frequency Histogram Your Method



Note : SDI with * marked are not considered for evaluation

Comments :

| Haematology - CBC, MCH (Mean Corpuscular Hb) | | | | | | |
|--|----------------------------|-----------|--------------|-------------|-------------|----------|
| | | N | Mean | SD | CV% | Excluded |
| | All Analyzer | 169 | 28.76 | 2.07 | 7.18 | 3 |
| Your Analyzer : | Horiba Yumizen H550 | 46 | 27.88 | 1.91 | 6.85 | 1 |
| | Horiba Yumizen H500 | 18 | 27.75 | 1.19 | 4.29 | - |
| | Horiba Yumizen H500 | 18 | 27.75 | 1.19 | 4.29 | - |
| | Erba ELite 580 | 13 | 29.70 | 0.71 | 2.40 | - |
| | Mindray BC-5000 | 12 | 30.94 | 1.13 | 3.65 | - |
| | Horiba ABX Pentra XL 80 | 9 | 29.66 | 0.31 | 1.04 | - |
| | Nihon Kohden Celltac Alpha | 6 | 28.47 | 1.39 | 4.89 | - |
| | Sysmex XP-100 | 5 | 27.96 | 0.75 | 2.68 | - |

Remarks: Interpretation of your reports

- a) If your SDI lies between +/- 2.0 SDI then your results are well within limits.
- b) If your SDI lies between +/-2.0 to 2.99 SDI then it is a warning alert flag.
- c) If your SDI is +/- 3.0 SDI or more then it is an action alert flag.

Interpretation when an analyte is reported for multiple samples in a Round:

- a) Reported on 2 samples:
 - Two out of two pass - Acceptable performance
 - One out of two pass - Review for random error & take action if appropriate
 - Both failed - Unacceptable performance, Review for systematic error
- b) Reported on 3 samples:
 - All pass - Acceptable performance
 - Two out of three pass - Review for random error & take action if appropriate
 - One out of three pass - Unacceptable performance, Review for systematic error
 - All failed - Unacceptable performance, Review for systematic error



Lab : 1052

Cycle No : 230310

Lab Name : KRSNAA DIAGNOSTICS LTD, PATHANKOT

Sample No : 04

Report Date : 19/12/2023

Sample Date : 07/10/2023

Haematology - CBC, MCHC (Mean Corpuscular Hb Concentration), g/dL

Comparative Statistics

| | N | Mean | SD | CV% | Excluded |
|---------------------------------------|-----|-------|------|-------|----------|
| All Methods | 169 | 22.66 | 2.42 | 10.67 | 7 |
| Calculated - (Your Method) | 117 | 22.24 | 2.21 | 9.95 | 6 |
| Horiba Yumizen H550 - (Your Analyzer) | 45 | 22.18 | 2.03 | 9.13 | 3 |

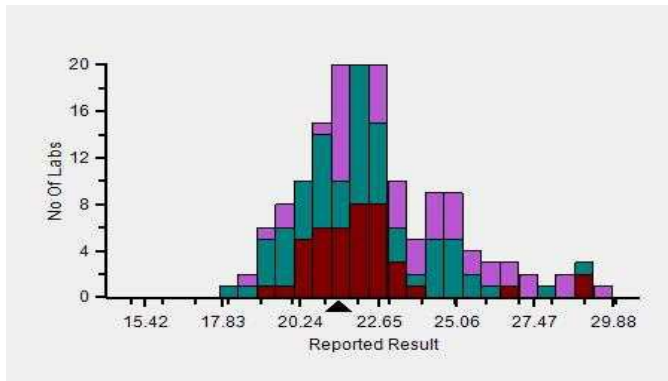
Evaluation Based On - Equipment wise Peer Grouping

| | | | |
|--------------------------|-------|-------------------|-------|
| Your Result | 21.40 | SDI / z-Score | -0.22 |
| Assigned Value | 21.96 | Average SDI | -0.12 |
| SDPA | 2.560 | Uncertainty of AV | 0.41 |
| Standard Unit Result Val | 21.40 | %DEV | -3.51 |

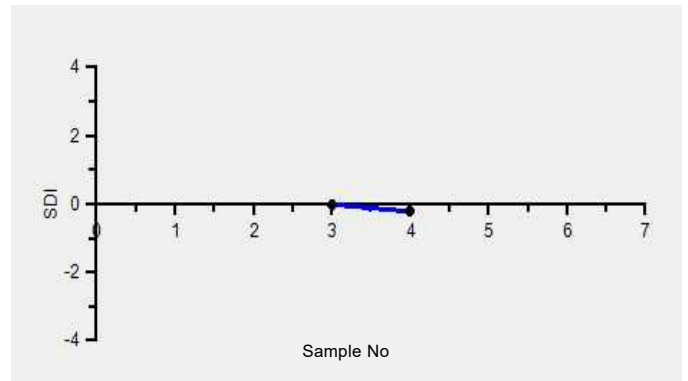
Note : # - Not evaluated / Bimodal distribution

X : SDI more than 4

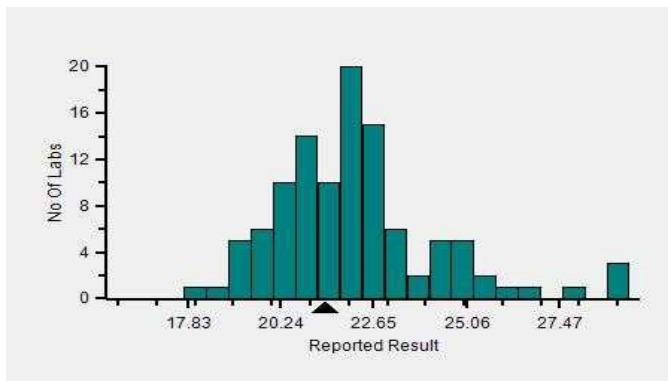
Frequency Histogram



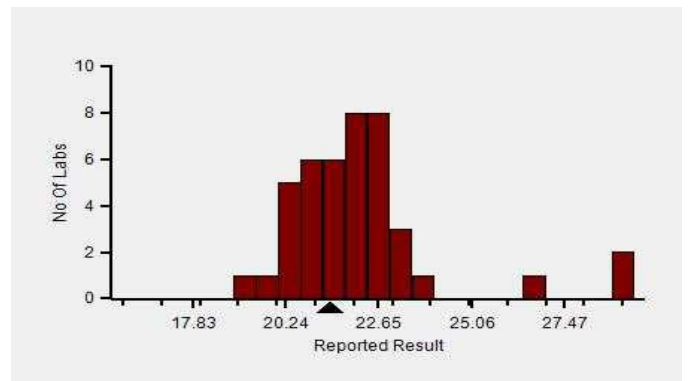
Z-Score Trend - Within Round



Frequency Histogram Your Method



Frequency Histogram Your Analyzer



Lab : 1052

Cycle No : 230310

Lab Name : KRSNAA DIAGNOSTICS LTD, PATHANKOT

Sample No : 04

Report Date : 19/12/2023

Sample Date : 07/10/2023

Frequency Histogram Your Method



Note : SDI with * marked are not considered for evaluation

Comments :

| Haematology - CBC, MCHC (Mean Corpuscular Hb Concentration) | | | | | | |
|---|----------------------------|-----------|--------------|-------------|-------------|----------|
| | | N | Mean | SD | CV% | Excluded |
| | All Analyzer | 169 | 22.66 | 2.42 | 10.67 | 7 |
| Your Analyzer : | Horiba Yumizen H550 | 45 | 22.18 | 2.03 | 9.13 | 3 |
| | Horiba Yumizen H500 | 19 | 22.06 | 1.25 | 5.67 | - |
| | Horiba Yumizen H500 | 19 | 22.06 | 1.25 | 5.67 | - |
| | Erba ELite 580 | 13 | 22.03 | 0.48 | 2.19 | - |
| | Mindray BC-5000 | 12 | 21.72 | 1.40 | 6.44 | 1 |
| | Horiba ABX Pentra XL 80 | 9 | 26.74 | 2.71 | 10.12 | - |
| | Nihon Kohden Celltac Alpha | 6 | 22.24 | 1.70 | 7.64 | - |
| | Sysmex XP-100 | 5 | 24.76 | 0.77 | 3.10 | - |

Remarks: Interpretation of your reports

- a) If your SDI lies between +/- 2.0 SDI then your results are well within limits.
- b) If your SDI lies between +/-2.0 to 2.99 SDI then it is a warning alert flag.
- c) If your SDI is +/- 3.0 SDI or more then it is an action alert flag.

Interpretation when an analyte is reported for multiple samples in a Round:

- a) Reported on 2 samples:
 - Two out of two pass - Acceptable performance
 - One out of two pass - Review for random error & take action if appropriate
 - Both failed - Unacceptable performance, Review for systematic error
- b) Reported on 3 samples:
 - All pass - Acceptable performance
 - Two out of three pass - Review for random error & take action if appropriate
 - One out of three pass - Unacceptable performance, Review for systematic error
 - All failed - Unacceptable performance, Review for systematic error



Lab : 1052

Cycle No : 230310

Lab Name : KRSNAA DIAGNOSTICS LTD, PATHANKOT

Sample No : 04

Report Date : 19/12/2023

Sample Date : 07/10/2023

Haematology - CBC, MCV (Mean Corpuscular Volume), fL

Comparative Statistics

| | N | Mean | SD | CV% | Excluded |
|---------------------------------------|-----|--------|-------|------|----------|
| All Methods | 169 | 127.06 | 12.09 | 9.52 | 1 |
| Calculated - (Your Method) | 100 | 128.35 | 11.91 | 9.28 | -- |
| Horiba Yumizen H550 - (Your Analyzer) | 46 | 124.09 | 8.71 | 7.02 | -- |

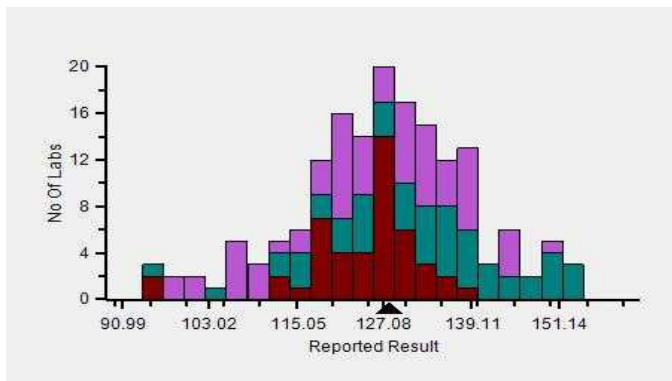
Evaluation Based On - Equipment wise Peer Grouping

| | | | |
|--------------------------|--------|-------------------|------|
| Your Result | 127.90 | SDI / z-Score | 0.24 |
| Assigned Value | 125.10 | Average SDI | 0.16 |
| SDPA | 11.700 | Uncertainty of AV | 1.81 |
| Standard Unit Result Val | 127.90 | %DEV | 3.07 |

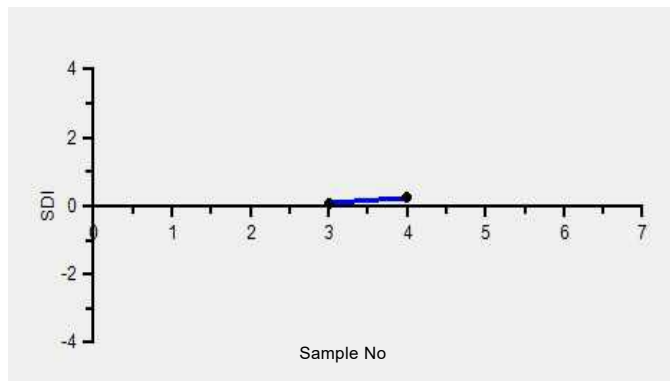
Note : # - Not evaluated / Bimodal distribution

X : SDI more than 4

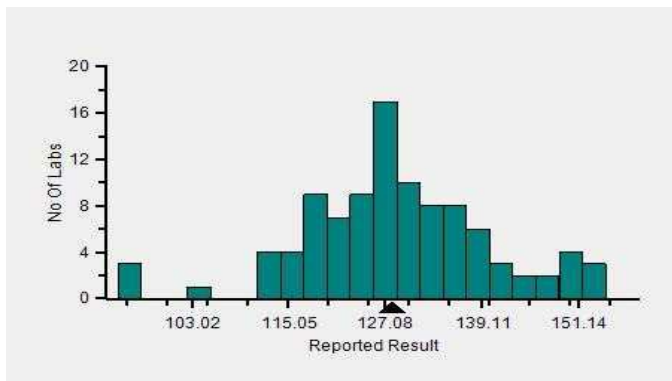
Frequency Histogram



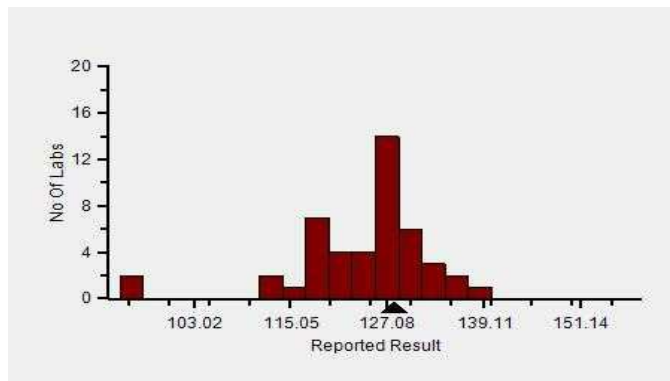
Z-Score Trend - Within Round



Frequency Histogram Your Method



Frequency Histogram Your Analyzer



Lab : 1052

Cycle No : 230310

Lab Name : KRSNAA DIAGNOSTICS LTD, PATHANKOT

Sample No : 04

Report Date : 19/12/2023

Sample Date : 07/10/2023

Frequency Histogram Your Method



Note : SDI with * marked are not considered for evaluation

Comments :

| Haematology - CBC, MCV (Mean Corpuscular Volume) | | N | Mean | SD | CV% | Excluded |
|--|----------------------------|-----------|---------------|-------------|-------------|----------|
| | All Analyzer | 169 | 127.06 | 12.09 | 9.52 | 1 |
| Your Analyzer : | Horiba Yumizen H550 | 46 | 124.09 | 8.71 | 7.02 | - |
| | Horiba Yumizen H500 | 18 | 126.01 | 3.90 | 3.10 | - |
| | Horiba Yumizen H500 | 18 | 126.01 | 3.90 | 3.10 | - |
| | Erba ELite 580 | 13 | 134.87 | 3.18 | 2.36 | - |
| | Mindray BC-5000 | 12 | 142.99 | 6.67 | 4.66 | 1 |
| | Horiba ABX Pentra XL 80 | 9 | 111.89 | 10.48 | 9.37 | - |
| | Nihon Kohden Celltac Alpha | 6 | 128.57 | 12.30 | 9.56 | - |
| | Sysmex XP-100 | 5 | 112.84 | 3.62 | 3.21 | - |

Remarks: Interpretation of your reports

- If your SDI lies between +/- 2.0 SDI then your results are well within limits.
- If your SDI lies between +/-2.0 to 2.99 SDI then it is a warning alert flag.
- If your SDI is +/- 3.0 SDI or more then it is an action alert flag.

Interpretation when an analyte is reported for multiple samples in a Round:

- Reported on 2 samples:
 - Two out of two pass - Acceptable performance
 - One out of two pass - Review for random error & take action if appropriate
 - Both failed - Unacceptable performance, Review for systematic error
- Reported on 3 samples:
 - All pass - Acceptable performance
 - Two out of three pass - Review for random error & take action if appropriate
 - One out of three pass - Unacceptable performance, Review for systematic error
 - All failed - Unacceptable performance, Review for systematic error



Lab : 1052

Cycle No : 230310

Lab Name : KRSNAA DIAGNOSTICS LTD, PATHANKOT

Sample No : 04

Report Date : 19/12/2023

Sample Date : 07/10/2023

Haematology - CBC, Platelet Count, 1000/ μ L

Comparative Statistics

| | N | Mean | SD | CV% | Excluded |
|---------------------------------------|-----|--------|-------|-------|----------|
| All Methods | 169 | 145.29 | 21.38 | 14.71 | 13 |
| Impedance - (Your Method) | 160 | 146.50 | 21.31 | 14.55 | 12 |
| Horiba Yumizen H550 - (Your Analyzer) | 47 | 151.44 | 16.93 | 11.18 | 1 |

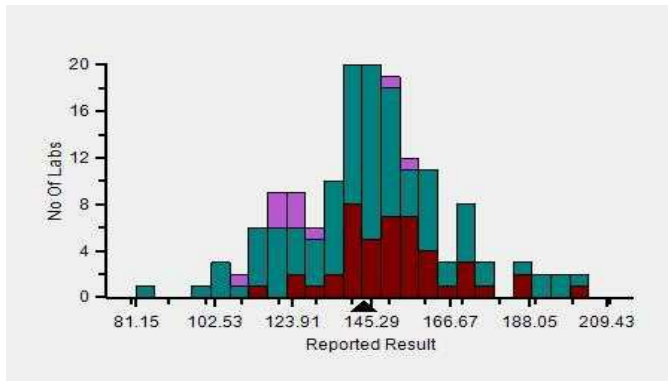
Evaluation Based On - Equipment wise Peer Grouping

| | | | |
|--------------------------|--------|-------------------|-------|
| Your Result | 143.00 | SDI / z-Score | -0.01 |
| Assigned Value | 143.16 | Average SDI | -0.24 |
| SDPA | 21.200 | Uncertainty of AV | 3.31 |
| Standard Unit Result Val | 143.00 | %DEV | -5.58 |

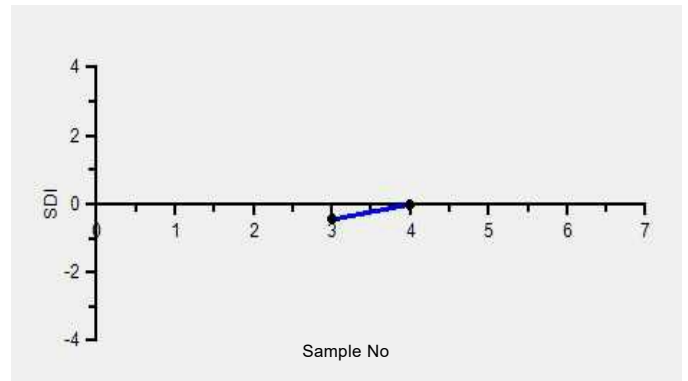
Note : # - Not evaluated / Bimodal distribution

X : SDI more than 4

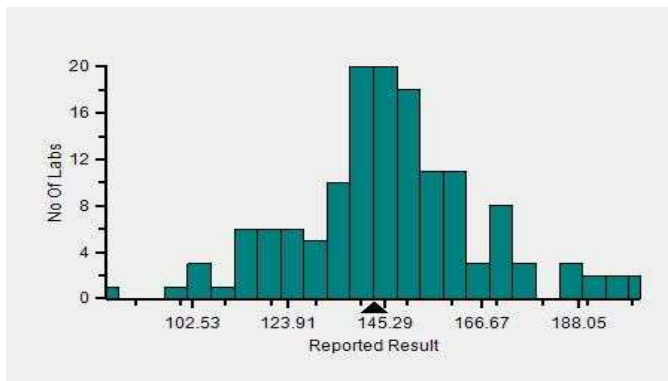
Frequency Histogram



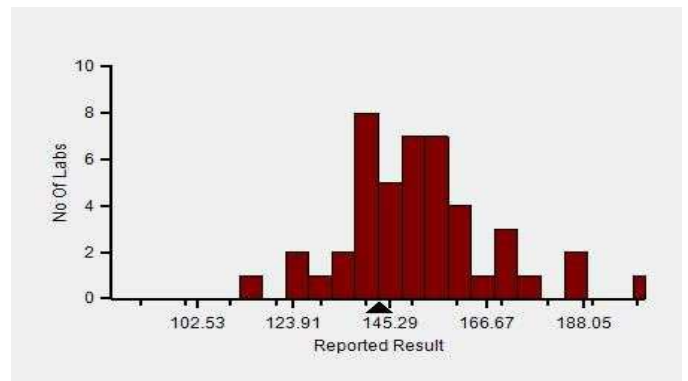
Z-Score Trend - Within Round



Frequency Histogram Your Method



Frequency Histogram Your Analyzer



Lab : 1052

Cycle No : 230310

Lab Name : KRSNAA DIAGNOSTICS LTD, PATHANKOT

Sample No : 04

Report Date : 19/12/2023

Sample Date : 07/10/2023

Frequency Histogram Your Method



Note : SDI with * marked are not considered for evaluation

Comments :

| Haematology - CBC, Platelet Count | | | | | | |
|-----------------------------------|----------------------------|-----------|---------------|--------------|--------------|----------|
| | | N | Mean | SD | CV% | Excluded |
| | All Analyzer | 169 | 145.29 | 21.38 | 14.71 | 13 |
| Your Analyzer : | Horiba Yumizen H550 | 47 | 151.44 | 16.93 | 11.18 | 1 |
| | Horiba Yumizen H500 | 17 | 118.19 | 18.38 | 15.55 | - |
| | Horiba Yumizen H500 | 17 | 118.19 | 18.38 | 15.55 | - |
| | Erba ELite 580 | 13 | 146.17 | 8.39 | 5.74 | 1 |
| | Mindray BC-5000 | 12 | 145.64 | 8.88 | 6.10 | 1 |
| | Horiba ABX Pentra XL 80 | 9 | 155.40 | 16.55 | 10.65 | 4 |
| | Nihon Kohden Celltac Alpha | 6 | 141.67 | 12.31 | 8.69 | - |
| | Sysmex XP-100 | 5 | 129.40 | 19.93 | 15.40 | - |

Remarks: Interpretation of your reports

- a) If your SDI lies between +/- 2.0 SDI then your results are well within limits.
- b) If your SDI lies between +/-2.0 to 2.99 SDI then it is a warning alert flag.
- c) If your SDI is +/- 3.0 SDI or more then it is an action alert flag.

Interpretation when an analyte is reported for multiple samples in a Round:

- a) Reported on 2 samples:
 - Two out of two pass - Acceptable performance
 - One out of two pass - Review for random error & take action if appropriate
 - Both failed - Unacceptable performance, Review for systematic error
- b) Reported on 3 samples:
 - All pass - Acceptable performance
 - Two out of three pass - Review for random error & take action if appropriate
 - One out of three pass - Unacceptable performance, Review for systematic error
 - All failed - Unacceptable performance, Review for systematic error



Lab : 1052

Cycle No : 230310

Lab Name : KRSNAA DIAGNOSTICS LTD, PATHANKOT

Sample No : 04

Report Date : 19/12/2023

Sample Date : 07/10/2023

Haematology - CBC, RDW CV%, %

Comparative Statistics

| | N | Mean | SD | CV% | Excluded |
|---------------------------------------|-----|-------|------|-------|----------|
| All Methods | 158 | 26.95 | 6.65 | 24.67 | 22 |
| Calculated - (Your Method) | 143 | 26.58 | 6.59 | 24.77 | 21 |
| Horiba Yumizen H550 - (Your Analyzer) | 46 | 22.46 | 2.86 | 12.72 | 6 |

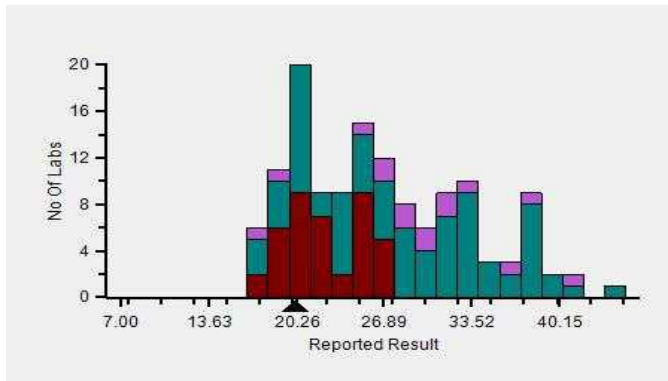
Evaluation Based On - Equipment wise Peer Grouping

| | | | |
|--------------------------|-------|-------------------|--------|
| Your Result | 20.20 | SDI / z-Score | -0.50 |
| Assigned Value | 21.81 | Average SDI | -0.38 |
| SDPA | 3.229 | Uncertainty of AV | 0.53 |
| Standard Unit Result Val | 20.20 | %DEV | -10.05 |

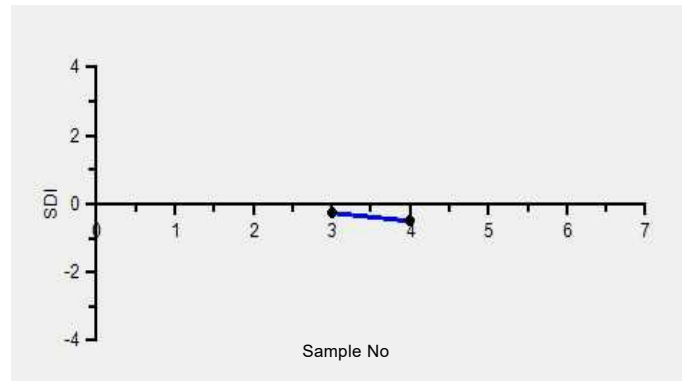
Note : # - Not evaluated / Bimodal distribution

X : SDI more than 4

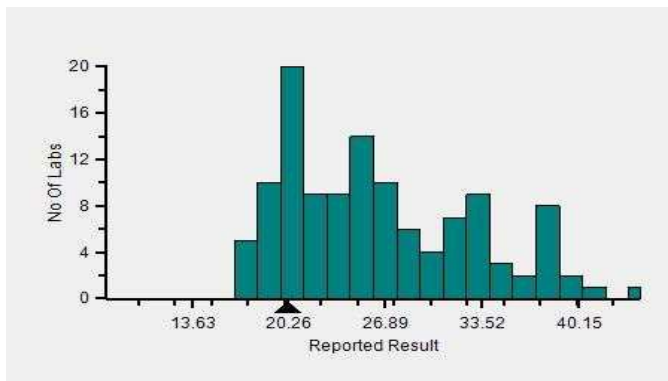
Frequency Histogram



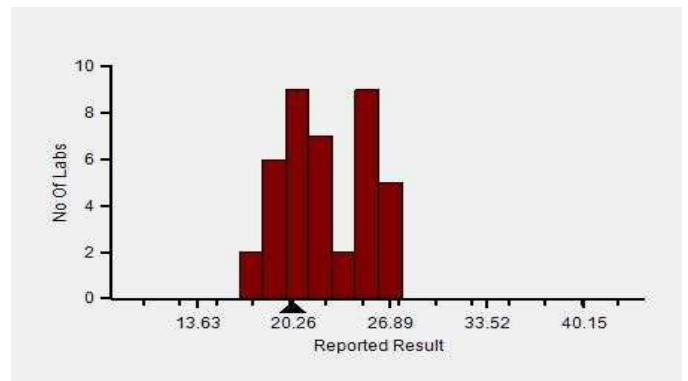
Z-Score Trend - Within Round



Frequency Histogram Your Method



Frequency Histogram Your Analyzer



Lab : 1052

Cycle No : 230310

Lab Name : KRSNAA DIAGNOSTICS LTD, PATHANKOT

Sample No : 04

Report Date : 19/12/2023

Sample Date : 07/10/2023

Frequency Histogram Your Method



Note : SDI with * marked are not considered for evaluation

Comments :

| Haematology - CBC, RDW CV% | | N | Mean | SD | CV% | Excluded |
|----------------------------|----------------------------|-----------|--------------|-------------|--------------|----------|
| | All Analyzer | 158 | 26.95 | 6.65 | 24.67 | 22 |
| Your Analyzer : | Horiba Yumizen H550 | 46 | 22.46 | 2.86 | 12.72 | 6 |
| | Horiba Yumizen H500 | 18 | 20.56 | 2.30 | 11.18 | - |
| | Horiba Yumizen H500 | 18 | 20.56 | 2.30 | 11.18 | - |
| | Erba ELite 580 | 13 | 31.88 | 2.24 | 7.02 | 1 |
| | Mindray BC-5000 | 11 | 35.84 | 3.80 | 10.60 | 1 |
| | Horiba ABX Pentra XL 80 | 8 | 22.44 | 2.14 | 9.54 | - |
| | Nihon Kohden Celltac Alpha | 6 | 32.60 | 5.37 | 16.46 | - |
| | Beckman Coulter DxH 560 | 5 | 28.45 | 3.66 | 12.87 | 1 |

Remarks: Interpretation of your reports

- a) If your SDI lies between +/- 2.0 SDI then your results are well within limits.
- b) If your SDI lies between +/-2.0 to 2.99 SDI then it is a warning alert flag.
- c) If your SDI is +/- 3.0 SDI or more then it is an action alert flag.

Interpretation when an analyte is reported for multiple samples in a Round:

- a) Reported on 2 samples:
 - Two out of two pass - Acceptable performance
 - One out of two pass - Review for random error & take action if appropriate
 - Both failed - Unacceptable performance, Review for systematic error
- b) Reported on 3 samples:
 - All pass - Acceptable performance
 - Two out of three pass - Review for random error & take action if appropriate
 - One out of three pass - Unacceptable performance, Review for systematic error
 - All failed - Unacceptable performance, Review for systematic error



Lab : 1052

Cycle No : 230310

Lab Name : KRSNAA DIAGNOSTICS LTD, PATHANKOT

Sample No : 04

Report Date : 19/12/2023

Sample Date : 07/10/2023

Haematology - CBC, Total Leucocytes (WBC) count, / μ l

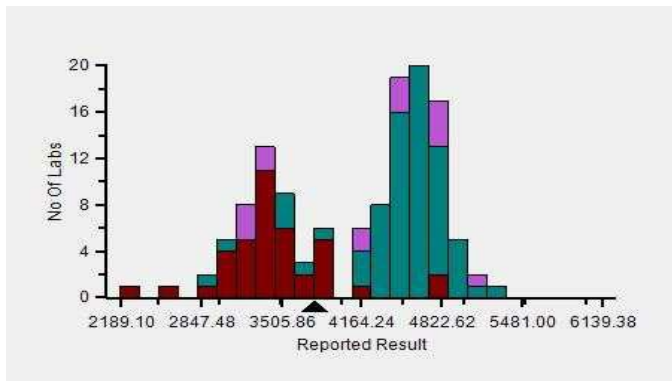
Comparative Statistics

| | N | Mean | SD | CV% | Excluded |
|---------------------------------------|-----|----------|--------|-------|----------|
| All Methods | 169 | 4,164.24 | 658.38 | 15.81 | 37 |
| Impedance - (Your Method) | 145 | 4,150.00 | 663.36 | 15.99 | 33 |
| Horiba Yumizen H550 - (Your Analyzer) | 46 | 3,456.41 | 469.38 | 13.58 | 6 |

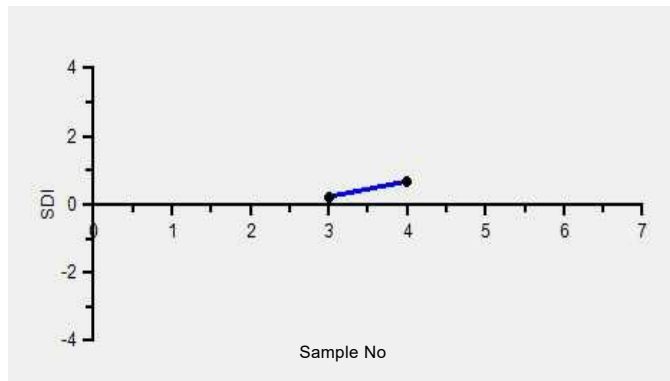
| | | | |
|---------------------------------|----------|--------------------------|-------|
| Your Result | 3.78 | SDI / z-Score | 0.68 |
| Assigned Value | 3,456.87 | Average SDI | 0.46 |
| SDPA | 473.000 | Uncertainty of AV | 82.27 |
| Standard Unit Result Val | 3,780.00 | %DEV | 9.36 |

Note : # - Not evaluated / Bimodal distribution
X : SDI more than 4

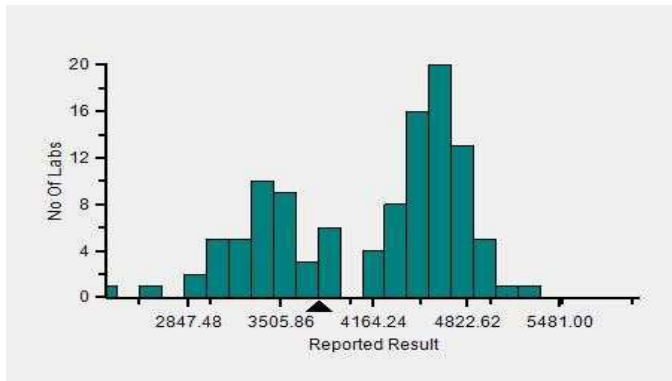
Frequency Histogram



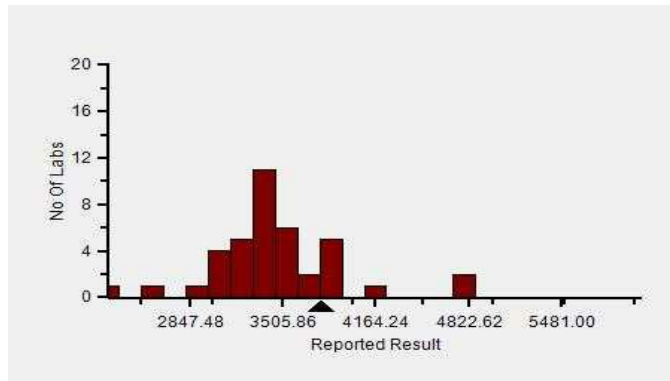
Z-Score Trend - Within Round



Frequency Histogram Your Method



Frequency Histogram Your Analyzer



Lab : 1052

Cycle No : 230310

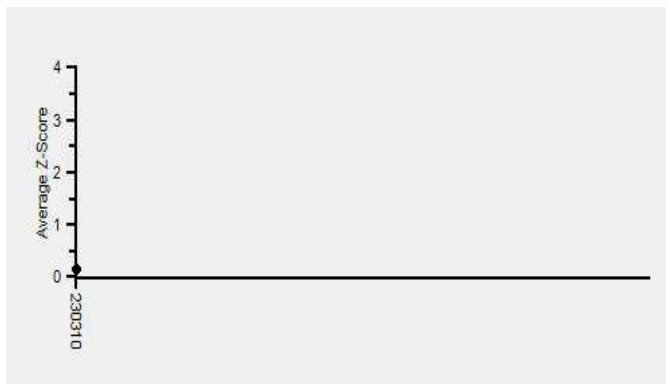
Lab Name : KRSNAA DIAGNOSTICS LTD, PATHANKOT

Sample No : 04

Report Date : 19/12/2023

Sample Date : 07/10/2023

Frequency Histogram Your Method



Note : SDI with * marked are not considered for evaluation

Comments :

| Haematology - CBC, Total Leucocytes (WBC) count | | | | | | |
|---|----------------------------|-----------|-----------------|---------------|--------------|----------|
| | | N | Mean | SD | CV% | Excluded |
| | All Analyzer | 169 | 4,164.24 | 658.38 | 15.81 | 37 |
| Your Analyzer : | Horiba Yumizen H550 | 46 | 3,456.41 | 469.38 | 13.58 | 6 |
| | Horiba Yumizen H500 | 18 | 3,618.46 | 610.69 | 16.88 | 4 |
| | Horiba Yumizen H500 | 18 | 3,618.46 | 610.69 | 16.88 | 4 |
| | Erba ELite 580 | 13 | 4,745.00 | 228.72 | 4.82 | 5 |
| | Mindray BC-5000 | 12 | 4,658.18 | 110.89 | 2.38 | 1 |
| | Horiba ABX Pentra XL 80 | 9 | 4,766.67 | 57.74 | 1.21 | 6 |
| | Nihon Kohden Celltac Alpha | 6 | 4,530.00 | 370.14 | 8.17 | 1 |
| | Sysmex XP-100 | 5 | 4,475.00 | 95.74 | 2.14 | 1 |

Remarks: Interpretation of your reports

- a) If your SDI lies between +/- 2.0 SDI then your results are well within limits.
- b) If your SDI lies between +/-2.0 to 2.99 SDI then it is a warning alert flag.
- c) If your SDI is +/- 3.0 SDI or more then it is an action alert flag.

Interpretation when an analyte is reported for multiple samples in a Round:

- a) Reported on 2 samples:
 - Two out of two pass - Acceptable performance
 - One out of two pass - Review for random error & take action if appropriate
 - Both failed - Unacceptable performance, Review for systematic error
- b) Reported on 3 samples:
 - All pass - Acceptable performance
 - Two out of three pass - Review for random error & take action if appropriate
 - One out of three pass - Unacceptable performance, Review for systematic error
 - All failed - Unacceptable performance, Review for systematic error

Dr Puneet Kumar Nigam

Dr Puneet Kumar Nigam
PT coordinator & Technical Manager, MHL EQAS
Unit No. 409-416.
Commercial Building - 1A
Kohinoor Mall, Kirol Road, Kurla (W),
Mumbai - 400070

This is a computer generated report hence signature is not required



PC-1022

Lab : 1052

Lab Name : KRSNAA DIAGNOSTICS LTD, PATHANKOT

Report Date : 19/12/2023

Cycle No : 230310

Sample No : 02

Sample Date : 07/10/2023

Haematology - Peripheral smear diagnosis, Diagnosis (Slide), -

■ All Methods

■ -- (Your Method)

■ -- (Your Analyzer)

N

33

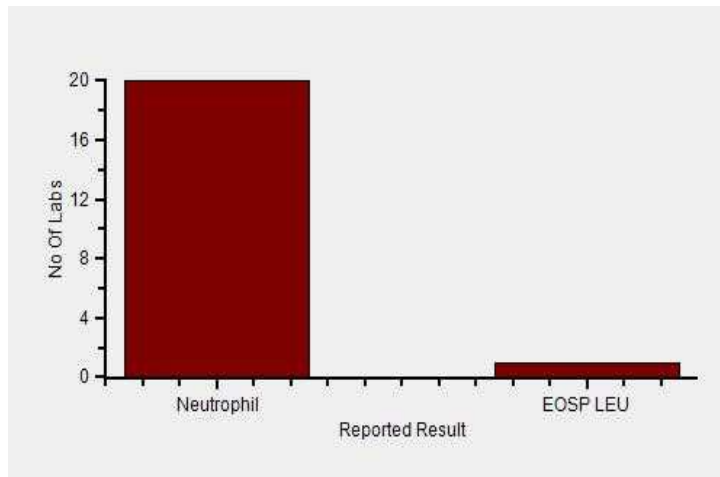
33

33

| | |
|------------------------|---------------------------|
| Your Result | Neutrophilic Leucocytosis |
| Result Expected | # |

Note : # is an indication that this parameter has not been evaluated

Frequency Histogram



Lab : 1052

Lab Name : KRSNAA DIAGNOSTICS LTD, PATHANKOT

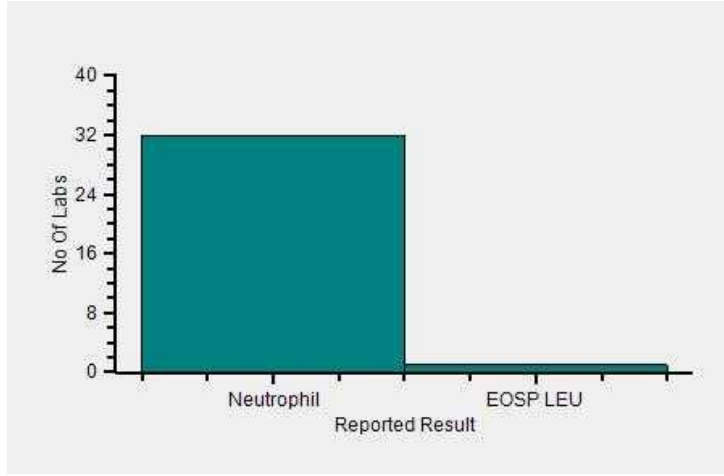
Report Date : 19/12/2023

Cycle No : 230310

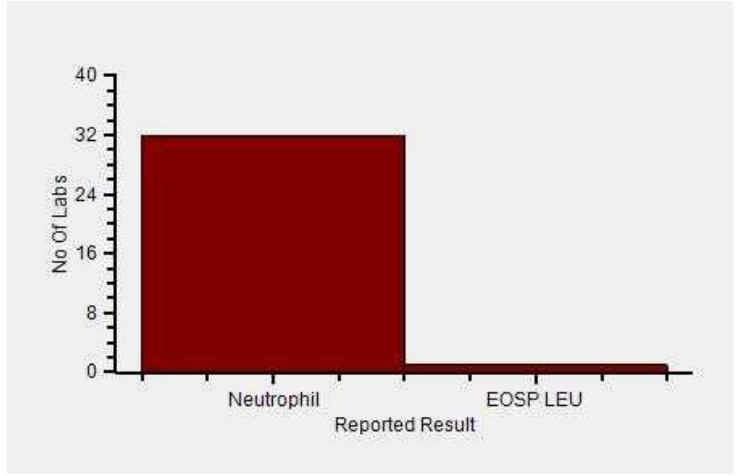
Sample No : 02

Sample Date : 07/10/2023

Frequency Histogram Your Method



Frequency Histogram Your Analyzer



Reported Results Legends :-

- Nor** : Normal
- Abn** : Abnormal
- CLL/ CLD** : CLL/Chronic lymphoproliferative disorder
- MA** : Microcytic hypochromic anaemia
- Eos** : Eosinophilia
- PV** : P. vivax
- Leu** : Leucopenia
- DIMANETH** : Dimorphic Anaemia with Thrombocytopenia
- EOSP LEU** : Eosinophilic leucocytosis
- LEUWTHRO** : Leucopenia with Thrombocytopenia

Comments :

Interpretation when an analyte is reported for multiple samples in a Round:

- a) Reported on 2 samples:
 - Two out of two pass - Acceptable performance
 - One out of two pass - Review for random error & take action if appropriate
 - Both failed - Unacceptable performance, Review for systematic error
- b) Reported on 3 samples:
 - All pass - Acceptable performance
 - Two out of three pass - Review for random error & take action if appropriate
 - One out of three pass - Unacceptable performance, Review for systematic error
 - All failed - Unacceptable performance, Review for systematic error

Dr Puneet Kumar Nigam

Dr Puneet Kumar Nigam
PT coordinator & Technical Manager, MHL EQAS
Unit No. 409-416.
Commercial Building - 1A
Kohinoor Mall, Kirool Road, Kurla (W),
Mumbai - 400070

This is a computer generated report hence signature is not required



PC-1022

Lab : 1052

Cycle No : 230310

Lab Name : KRSNAA DIAGNOSTICS LTD, PATHANKOT

Sample No : 02

Report Date : 19/12/2023

Sample Date : 07/10/2023

Haematology-PS Slide Count Qualitative, Eosinophil., -

■ All Methods

■ Microscopy - (Your Method)

■ - - (Your Analyzer)

N

63

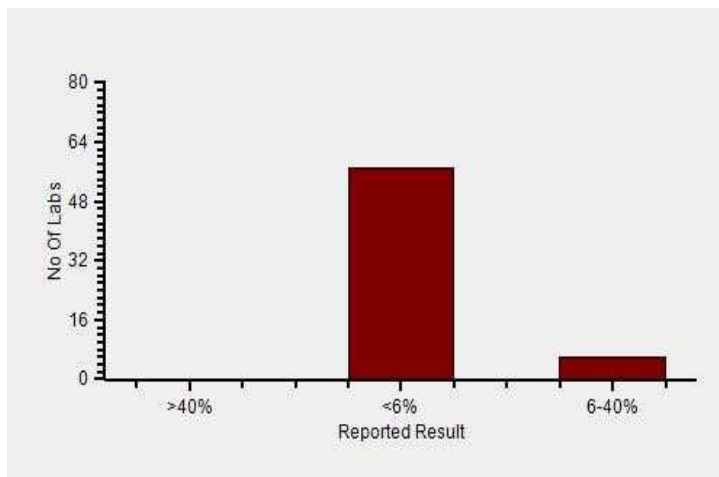
63

63

| | |
|------------------------|-----|
| Your Result | <6% |
| Result Expected | <6% |

Note : # is an indication that this parameter has not been evaluated

Frequency Histogram



Lab : 1052

Cycle No : 230310

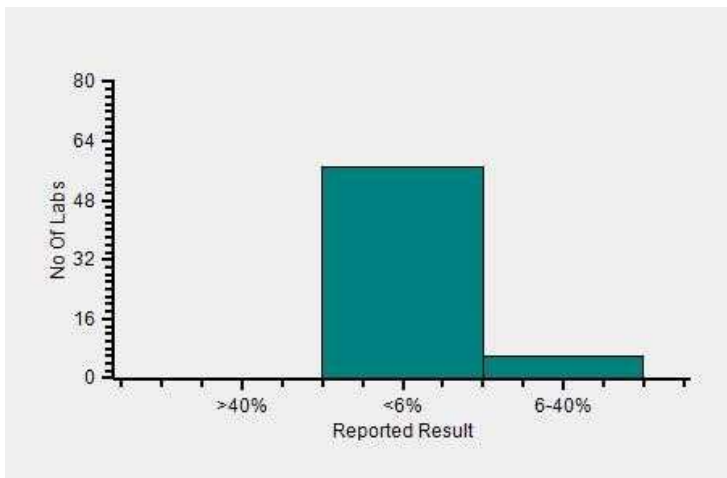
Lab Name : KRSNAA DIAGNOSTICS LTD, PATHANKOT

Sample No : 02

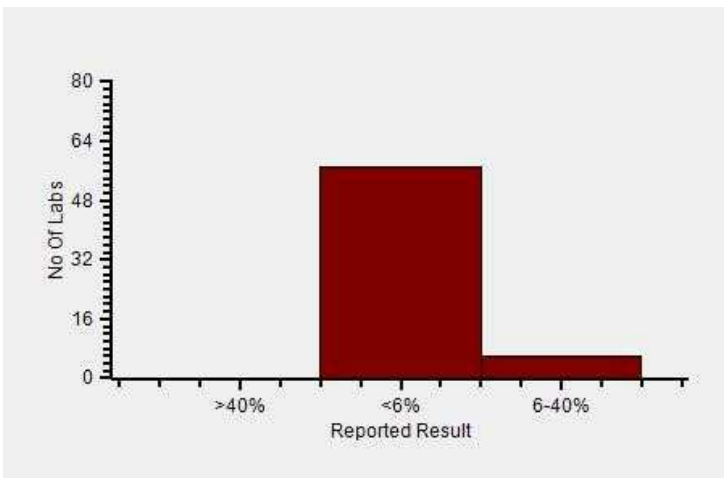
Report Date : 19/12/2023

Sample Date : 07/10/2023

Frequency Histogram Your Method



Frequency Histogram Your Analyzer



Reported Results Legends :-

| | |
|-------|---------|
| >40% | : >40% |
| <10% | : <10% |
| <6% | : <6% |
| <1% | : <1% |
| 6-40% | : 6-40% |
| 1-6% | : 1-6% |
| >6% | : >6% |

Comments :

Interpretation when an analyte is reported for multiple samples in a Round:

a) Reported on 2 samples:

- Two out of two pass - Acceptable performance
- One out of two pass - Review for random error & take action if appropriate
- Both failed - Unacceptable performance, Review for systematic error

b) Reported on 3 samples:

- All pass - Acceptable performance
- Two out of three pass - Review for random error & take action if appropriate
- One out of three pass - Unacceptable performance, Review for systematic error
- All failed - Unacceptable performance, Review for systematic error



Lab : 1052

Cycle No : 230310

Lab Name : KRSNAA DIAGNOSTICS LTD, PATHANKOT

Sample No : 02

Report Date : 19/12/2023

Sample Date : 07/10/2023

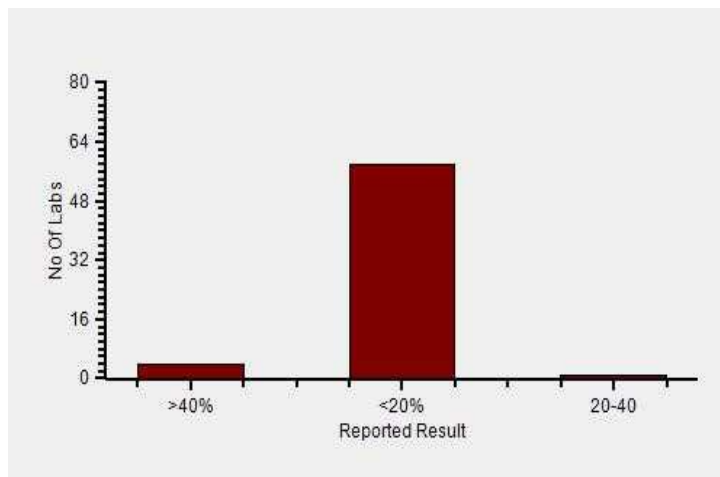
Haematology-PS Slide Count Qualitative, Lymphocyte., -

| | |
|---|---|
| <p>■ All Methods</p> <p>■ Microscopy - (Your Method)</p> <p>■ - - (Your Analyzer)</p> | <p>N</p> <p>63</p> <p>63</p> <p>63</p> |
|---|---|

| | | | | |
|---|--------------------|----------------|------------------------|----------------|
| <table style="width: 100%; border: none;"> <tr> <td style="width: 60%;">Your Result</td> <td style="text-align: right;"><20%</td> </tr> <tr> <td>Result Expected</td> <td style="text-align: right;"><20%</td> </tr> </table> | Your Result | <20% | Result Expected | <20% |
| Your Result | <20% | | | |
| Result Expected | <20% | | | |

Note : # is an indication that this parameter has not been evaluated

Frequency Histogram



Lab : 1052

Cycle No : 230310

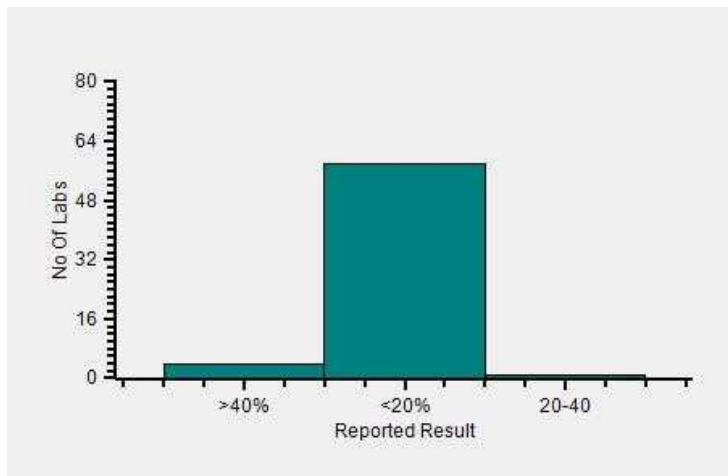
Lab Name : KRSNAA DIAGNOSTICS LTD, PATHANKOT

Sample No : 02

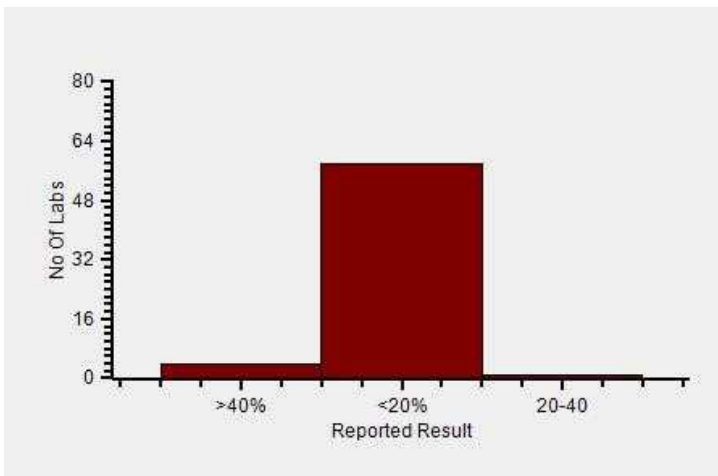
Report Date : 19/12/2023

Sample Date : 07/10/2023

Frequency Histogram Your Method



Frequency Histogram Your Analyzer



Reported Results Legends :-

| | |
|--------|----------|
| >40% | : >40% |
| <20% | : <20% |
| 20-30% | : 20-30% |
| >25% | : >25% |
| 20-40 | : 20-40% |
| <25% | : <25% |
| 25-50% | : 25-50% |

Comments :

Interpretation when an analyte is reported for multiple samples in a Round:

a) Reported on 2 samples:

- Two out of two pass - Acceptable performance
- One out of two pass - Review for random error & take action if appropriate
- Both failed - Unacceptable performance, Review for systematic error

b) Reported on 3 samples:

- All pass - Acceptable performance
- Two out of three pass - Review for random error & take action if appropriate
- One out of three pass - Unacceptable performance, Review for systematic error
- All failed - Unacceptable performance, Review for systematic error



Lab : 1052

Cycle No : 230310

Lab Name : KRSNAA DIAGNOSTICS LTD, PATHANKOT

Sample No : 02

Report Date : 19/12/2023

Sample Date : 07/10/2023

Haematology-PS Slide Count Qualitative, Neutrophil., -

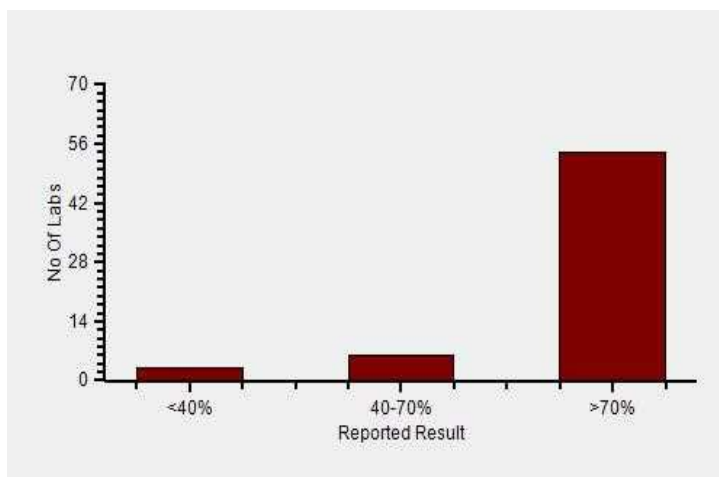
- All Methods
- Microscopy - (Your Method)
- - - (Your Analyzer)

N
63
63
63

| | |
|------------------------|------|
| Your Result | >70% |
| Result Expected | >70% |

Note : # is an indication that this parameter has not been evaluated

Frequency Histogram



Lab : 1052

Cycle No : 230310

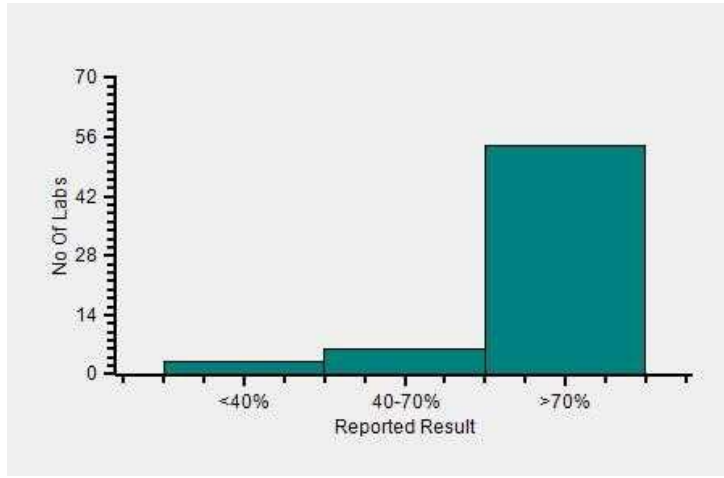
Lab Name : KRSNAA DIAGNOSTICS LTD, PATHANKOT

Sample No : 02

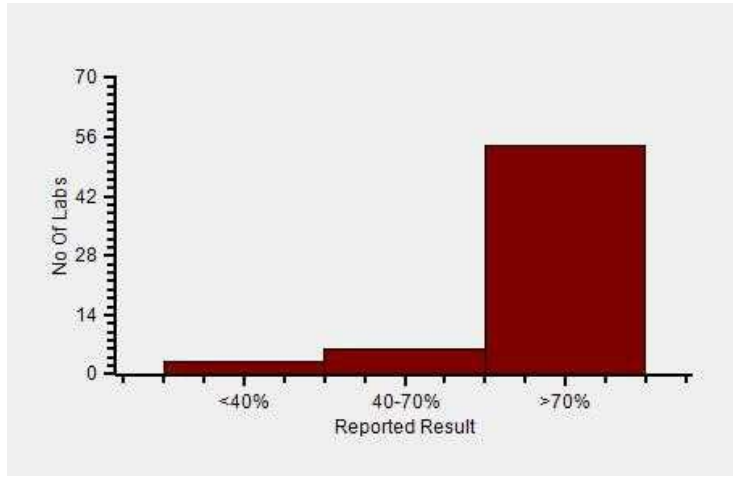
Report Date : 19/12/2023

Sample Date : 07/10/2023

Frequency Histogram Your Method



Frequency Histogram Your Analyzer



Reported Results Legends :-

| | |
|----------------|----------|
| 60-80% | : 60-80% |
| <40% | : <40% |
| 40-70% | : 40-70% |
| >70% | : >70% |

Comments :

Interpretation when an analyte is reported for multiple samples in a Round:

a) Reported on 2 samples:

- Two out of two pass - Acceptable performance
- One out of two pass - Review for random error & take action if appropriate
- Both failed - Unacceptable performance, Review for systematic error

b) Reported on 3 samples:

- All pass - Acceptable performance
- Two out of three pass - Review for random error & take action if appropriate
- One out of three pass - Unacceptable performance, Review for systematic error
- All failed - Unacceptable performance, Review for systematic error

Dr Puneet Kumar Nigam

Dr Puneet Kumar Nigam
PT coordinator & Technical Manager, MHL EQAS

Unit No. 409-416.
Commercial Building - 1A
Kohinoor Mall, Kiro Road, Kurla (W),
Mumbai - 400070

This is a computer generated report hence signature is not required



PC-1022