

Lab : 1053

Cycle No : 230310

Lab Name : KRSNAA DIAGNOSTICS LTD, RAJPURA

Sample No : 03

Report Date : 19/12/2023

Sample Date : 07/10/2023

**Haematology - CBC, Erythrocyte (RBC) Count, mill/cu.mm**

**Comparative Statistics**

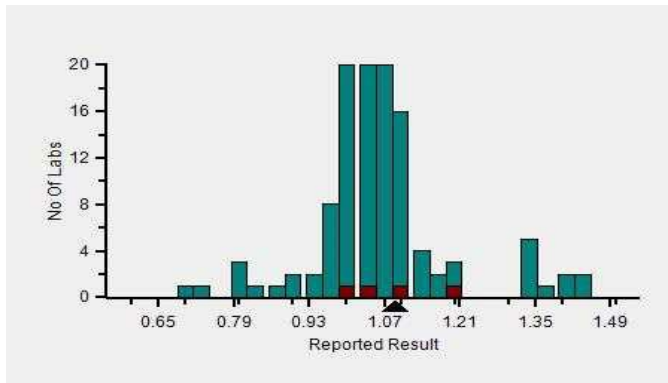
	N	Mean	SD	CV%	Excluded
All Methods	170	1.07	0.14	13.35	7
Impedance - (Your Method)	164	1.07	0.14	13.27	6
Horiba ABX Micros ES 60 - (Your Analyzer)	5	1.07	0.09	8.30	1

**Evaluation Based On - Equipment wise Peer Grouping**

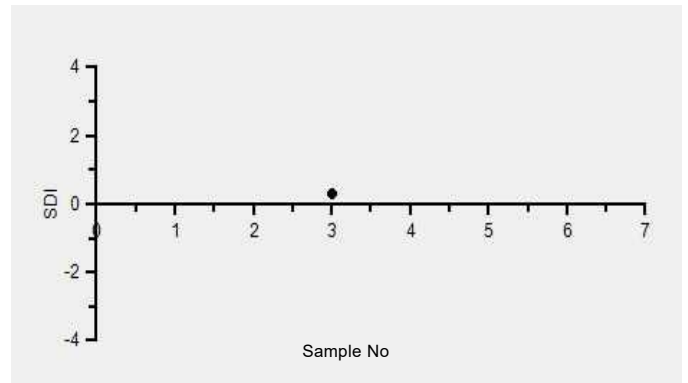
Your Result	1.09	SDI / z-Score	0.29
Assigned Value	1.05	Average SDI	0.31
SDPA	0.150	Uncertainty of AV	0.04
Standard Unit Result Val	1.09	%DEV	1.58

Note : # - Not evaluated / Bimodal distribution  
X : SDI more than 4

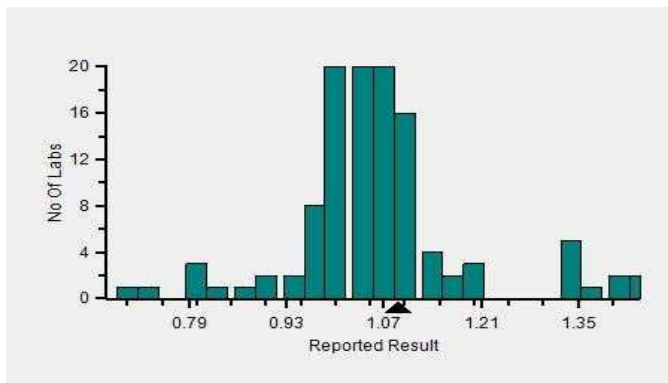
Frequency Histogram



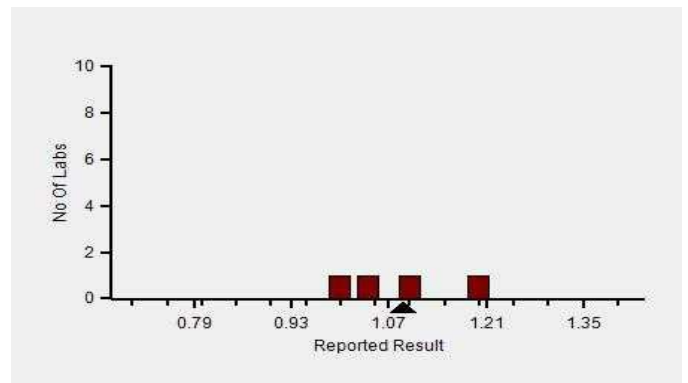
Z-Score Trend - Within Round



Frequency Histogram Your Method



Frequency Histogram Your Analyzer



Lab : 1053

Cycle No : 230310

Lab Name : KRSNAA DIAGNOSTICS LTD, RAJPURA

Sample No : 03

Report Date : 19/12/2023

Sample Date : 07/10/2023

Frequency Histogram Your Method



**Note :** SDI with \* marked are not considered for evaluation

**Comments :**

**Haematology - CBC, Erythrocyte (RBC) Count**

		N	Mean	SD	CV%	Excluded
	All Analyzer	170	1.07	0.14	13.35	7
<b>Your Analyzer :</b>	<b>Horiba ABX Micros ES 60</b>	<b>5</b>	<b>1.07</b>	<b>0.09</b>	<b>8.30</b>	<b>1</b>
	Horiba Yumizen H550	46	1.02	0.11	10.71	1
	Horiba Yumizen H500	17	1.08	0.17	15.54	-
	Erba ELite 580	13	1.02	0.03	2.46	-
	Mindray BC-5000	12	1.04	0.04	3.35	-
	Horiba ABX Pentra XL 80	8	1.36	0.16	11.96	-
	Nihon Kohden Celltac Alpha	6	1.09	0.03	2.39	-
	Sysmex XP-100	5	1.21	0.23	18.62	-

Remarks: Interpretation of your reports

- If your SDI lies between +/- 2.0 SDI then your results are well within limits.
- If your SDI lies between +/-2.0 to 2.99 SDI then it is a warning alert flag.
- If your SDI is +/- 3.0 SDI or more then it is an action alert flag.

Interpretation when an analyte is reported for multiple samples in a Round:

a) Reported on 2 samples:

- Two out of two pass - Acceptable performance
- One out of two pass - Review for random error & take action if appropriate
- Both failed - Unacceptable performance, Review for systematic error

b) Reported on 3 samples:

- All pass - Acceptable performance
- Two out of three pass - Review for random error & take action if appropriate
- One out of three pass - Unacceptable performance, Review for systematic error
- All failed - Unacceptable performance, Review for systematic error



Lab : 1053

Cycle No : 230310

Lab Name : KRSNAA DIAGNOSTICS LTD, RAJPURA

Sample No : 03

Report Date : 19/12/2023

Sample Date : 07/10/2023

**Haematology - CBC, Haemoglobin, g/dL**

**Comparative Statistics**

	N	Mean	SD	CV%	Excluded
All Methods	170	2.86	0.38	13.37	15
Photometric - (Your Method)	44	2.87	0.46	16.14	4
Horiba ABX Micros ES 60 - (Your Analyzer)	5	2.83	0.10	3.40	1

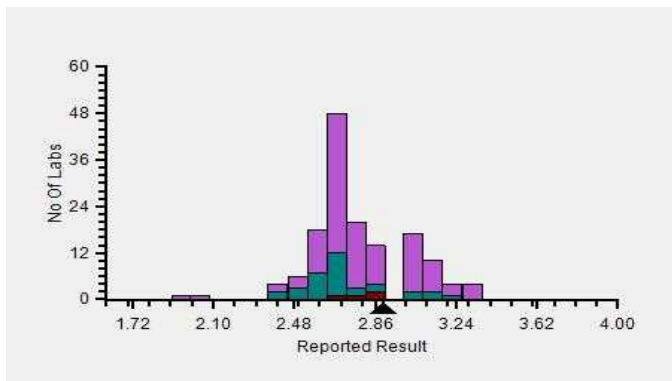
**Evaluation Based On - Equipment wise Peer Grouping**

Your Result	2.90	SDI / z-Score	0.83
Assigned Value	2.70	Average SDI	0.82
SDPA	0.240	Uncertainty of AV	0.04
Standard Unit Result Val	2.90	%DEV	2.65

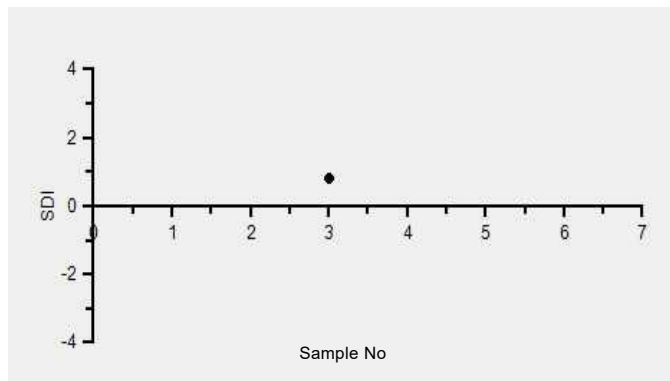
Note : # - Not evaluated / Bimodal distribution

X : SDI more than 4

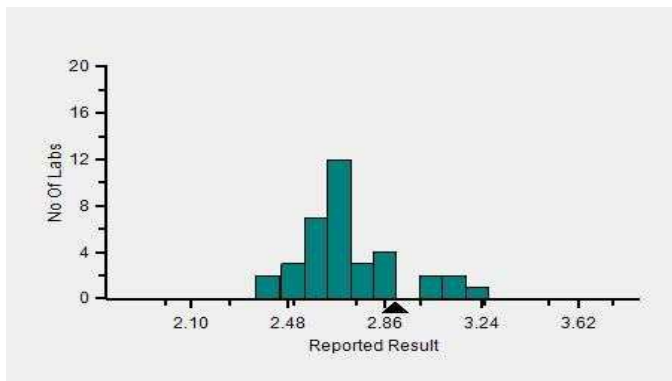
Frequency Histogram



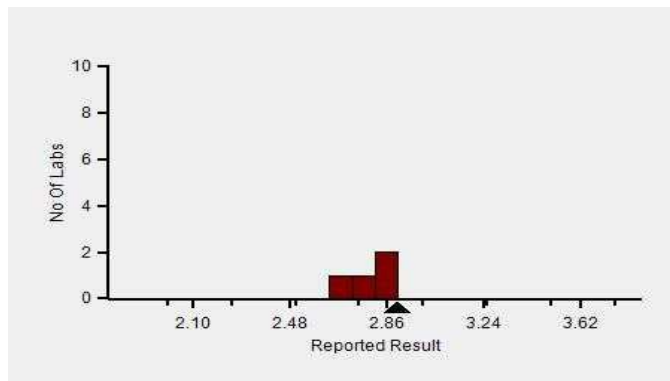
Z-Score Trend - Within Round



Frequency Histogram Your Method



Frequency Histogram Your Analyzer



Lab : 1053

Cycle No : 230310

Lab Name : KRSNAA DIAGNOSTICS LTD, RAJPURA

Sample No : 03

Report Date : 19/12/2023

Sample Date : 07/10/2023

Frequency Histogram Your Method



**Note :** SDI with \* marked are not considered for evaluation

**Comments :**

Haematology - CBC, Haemoglobin		N	Mean	SD	CV%	Excluded
	All Analyzer	170	2.86	0.38	13.37	15
<b>Your Analyzer :</b>	<b>Horiba ABX Micros ES 60</b>	<b>5</b>	<b>2.83</b>	<b>0.10</b>	<b>3.40</b>	<b>1</b>
	Horiba Yumizen H550	46	2.68	0.07	2.53	2
	Horiba Yumizen H500	17	2.71	0.06	2.36	2
	Erba ELite 580	13	2.70	0.06	2.15	-
	Horiba ABX Pentra XL 80	8	4.23	0.08	1.80	1
	Mindray BC 5000	8	3.11	0.06	2.06	-
	Nihon Kohden Celltac Alpha	6	2.90	0.30	10.49	-
	Sysmex XP-100	5	3.08	0.15	4.88	1

Remarks: Interpretation of your reports

- a) If your SDI lies between +/- 2.0 SDI then your results are well within limits.
- b) If your SDI lies between +/-2.0 to 2.99 SDI then it is a warning alert flag.
- c) If your SDI is +/- 3.0 SDI or more then it is an action alert flag.

Interpretation when an analyte is reported for multiple samples in a Round:

- a) Reported on 2 samples:
  - Two out of two pass - Acceptable performance
  - One out of two pass - Review for random error & take action if appropriate
  - Both failed - Unacceptable performance, Review for systematic error
- b) Reported on 3 samples:
  - All pass - Acceptable performance
  - Two out of three pass - Review for random error & take action if appropriate
  - One out of three pass - Unacceptable performance, Review for systematic error
  - All failed - Unacceptable performance, Review for systematic error



Lab : 1053

Cycle No : 230310

Lab Name : KRSNAA DIAGNOSTICS LTD, RAJPURA

Sample No : 03

Report Date : 19/12/2023

Sample Date : 07/10/2023

**Haematology - CBC, Hematocrit, %**

**Comparative Statistics**

	N	Mean	SD	CV%	Excluded
All Methods	163	13.35	1.61	12.05	9
Calculated - (Your Method)	101	13.11	1.58	12.03	5
Horiba ABX Micros ES 60 - (Your Analyzer)	5	12.18	0.41	3.38	1

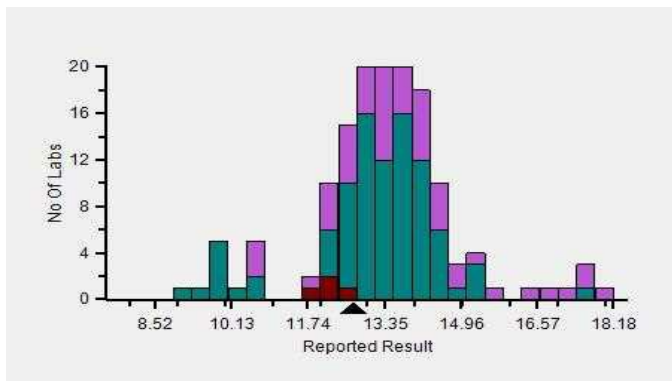
**Evaluation Based On - Equipment wise Peer Grouping**

Your Result	12.70	SDI / z-Score	-0.27
Assigned Value	13.14	Average SDI	-0.22
SDPA	1.650	Uncertainty of AV	0.28
Standard Unit Result Val	12.70	%DEV	4.31

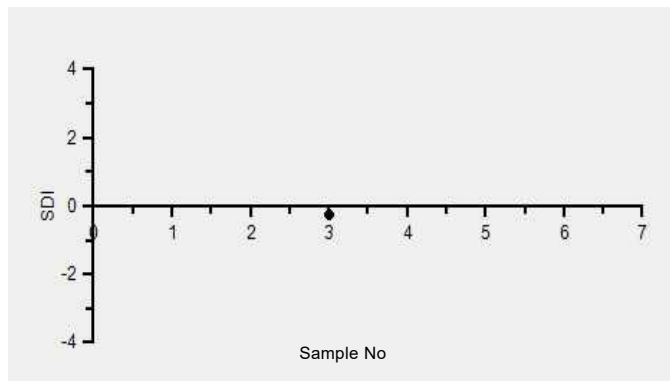
Note : # - Not evaluated / Bimodal distribution

X : SDI more than 4

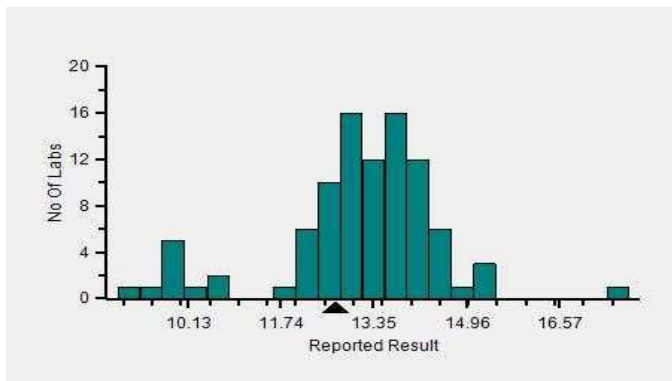
Frequency Histogram



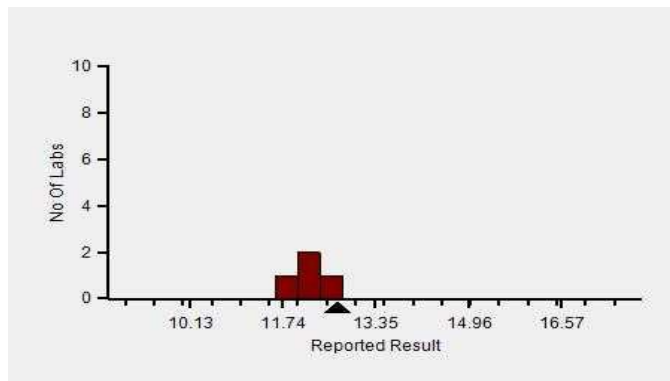
Z-Score Trend - Within Round



Frequency Histogram Your Method



Frequency Histogram Your Analyzer



Lab : 1053

Cycle No : 230310

Lab Name : KRSNAA DIAGNOSTICS LTD, RAJPURA

Sample No : 03

Report Date : 19/12/2023

Sample Date : 07/10/2023

Frequency Histogram Your Method



**Note :** SDI with \* marked are not considered for evaluation

**Comments :**

Haematology - CBC, Hematocrit		N	Mean	SD	CV%	Excluded
	All Analyzer	163	13.35	1.61	12.05	9
<b>Your Analyzer :</b>	<b>Horiba ABX Micros ES 60</b>	<b>5</b>	<b>12.18</b>	<b>0.41</b>	<b>3.38</b>	<b>1</b>
	Horiba Yumizen H550	46	12.66	1.44	11.39	2
	Horiba Yumizen H500	17	13.36	1.58	11.79	1
	Erba ELite 580	13	13.54	0.44	3.23	-
	Mindray BC-5000	12	13.98	1.38	9.86	-
	Horiba ABX Pentra XL 80	7	15.42	2.57	16.68	1
	Nihon Kohden Celltac Alpha	6	13.87	1.02	7.35	-
	Beckman Coulter DxH 560	5	13.30	0.27	1.99	-

Remarks: Interpretation of your reports

- a) If your SDI lies between +/- 2.0 SDI then your results are well within limits.
- b) If your SDI lies between +/-2.0 to 2.99 SDI then it is a warning alert flag.
- c) If your SDI is +/- 3.0 SDI or more then it is an action alert flag.

Interpretation when an analyte is reported for multiple samples in a Round:

- a) Reported on 2 samples:
  - Two out of two pass - Acceptable performance
  - One out of two pass - Review for random error & take action if appropriate
  - Both failed - Unacceptable performance, Review for systematic error
- b) Reported on 3 samples:
  - All pass - Acceptable performance
  - Two out of three pass - Review for random error & take action if appropriate
  - One out of three pass - Unacceptable performance, Review for systematic error
  - All failed - Unacceptable performance, Review for systematic error



Lab : 1053

Lab Name : KRSNAA DIAGNOSTICS LTD, RAJPURA

Report Date : 19/12/2023

Cycle No : 230310

Sample No : 03

Sample Date : 07/10/2023

**Haematology - CBC, MCH (Mean Corpuscular Hb), pg**

**Comparative Statistics**

	N	Mean	SD	CV%	Excluded
All Methods	170	27.27	2.32	8.50	4
Calculated - (Your Method)	118	27.28	2.32	8.52	3
Horiba ABX Micros ES 60 - (Your Analyzer)	5	27.74	2.80	10.08	--

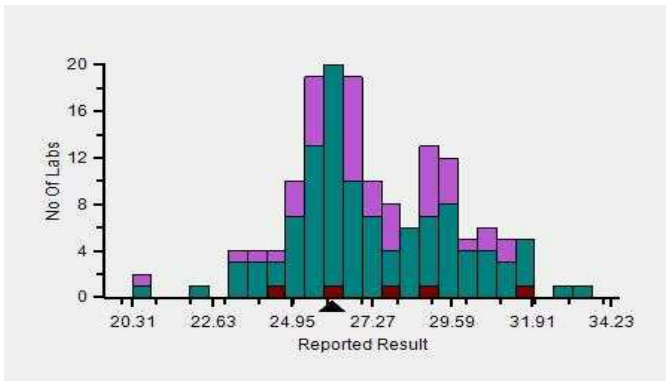
**Evaluation Based On - Equipment wise Peer Grouping**

Your Result	26.10	SDI / z-Score	0.03
Assigned Value	26.03	Average SDI	0.13
SDPA	2.490	Uncertainty of AV	0.41
Standard Unit Result Val	26.10	%DEV	-5.91

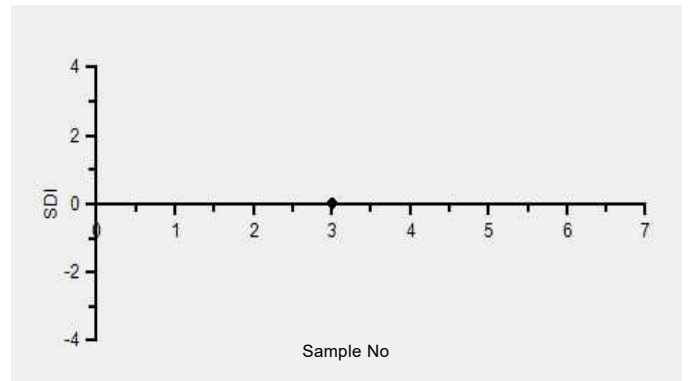
Note : # - Not evaluated / Bimodal distribution

X : SDI more than 4

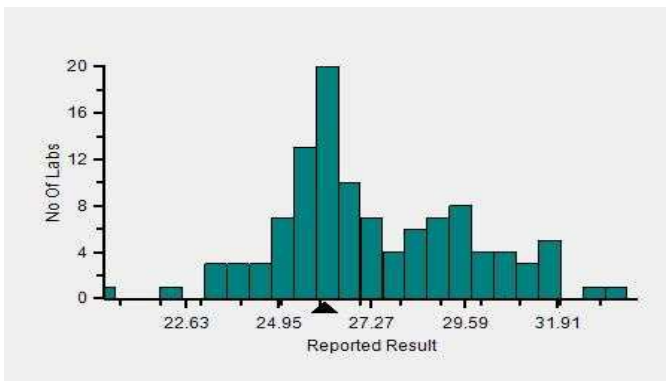
Frequency Histogram



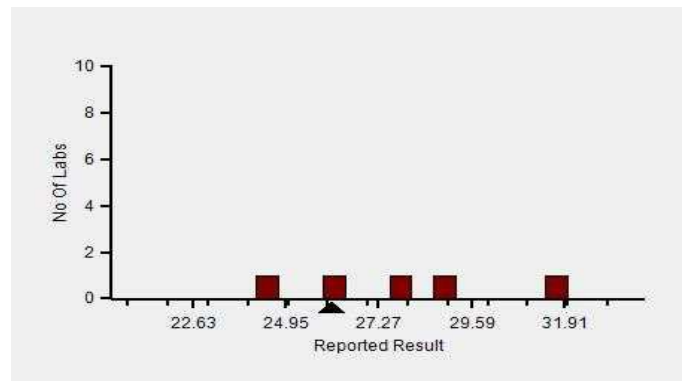
Z-Score Trend - Within Round



Frequency Histogram Your Method



Frequency Histogram Your Analyzer



Lab : 1053

Cycle No : 230310

Lab Name : KRSNAA DIAGNOSTICS LTD, RAJPURA

Sample No : 03

Report Date : 19/12/2023

Sample Date : 07/10/2023

Frequency Histogram Your Method



**Note :** SDI with \* marked are not considered for evaluation

**Comments :**

Haematology - CBC, MCH (Mean Corpuscular Hb)						
		N	Mean	SD	CV%	Excluded
	All Analyzer	170	27.27	2.32	8.50	4
<b>Your Analyzer :</b>	<b>Horiba ABX Micros ES 60</b>	<b>5</b>	<b>27.74</b>	<b>2.80</b>	<b>10.08</b>	-
	Horiba Yumizen H550	45	26.65	1.97	7.39	1
	Horiba Yumizen H500	18	26.51	1.78	6.73	-
	Erba ELite 580	13	26.53	0.45	1.68	-
	Mindray BC-5000	12	29.88	0.96	3.21	-
	Horiba ABX Pentra XL 80	8	28.06	3.43	12.23	1
	Nihon Kohden Celltac Alpha	6	26.71	2.52	9.45	-
	Sysmex XP-100	5	27.55	1.98	7.19	-

Remarks: Interpretation of your reports

- If your SDI lies between +/- 2.0 SDI then your results are well within limits.
- If your SDI lies between +/-2.0 to 2.99 SDI then it is a warning alert flag.
- If your SDI is +/- 3.0 SDI or more then it is an action alert flag.

Interpretation when an analyte is reported for multiple samples in a Round:

a) Reported on 2 samples:

- Two out of two pass - Acceptable performance
- One out of two pass - Review for random error & take action if appropriate
- Both failed - Unacceptable performance, Review for systematic error

b) Reported on 3 samples:

- All pass - Acceptable performance
- Two out of three pass - Review for random error & take action if appropriate
- One out of three pass - Unacceptable performance, Review for systematic error
- All failed - Unacceptable performance, Review for systematic error





Lab : 1053

Cycle No : 230310

Lab Name : KRSNAA DIAGNOSTICS LTD, RAJPURA

Sample No : 03

Report Date : 19/12/2023

Sample Date : 07/10/2023

**Haematology - CBC, MCHC (Mean Corpuscular Hb Concentration), g/dL**

**Comparative Statistics**

	N	Mean	SD	CV%	Excluded
All Methods	170	21.53	2.56	11.88	6
Calculated - (Your Method)	117	21.22	2.26	10.65	5
Horiba ABX Micros ES 60 - (Your Analyzer)	5	23.10	0.92	3.98	1

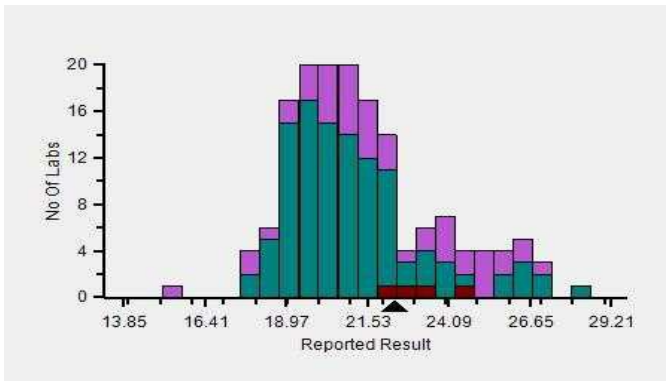
**Evaluation Based On - Equipment wise Peer Grouping**

Your Result	22.40	SDI / z-Score	0.81
Assigned Value	20.53	Average SDI	0.77
SDPA	2.300	Uncertainty of AV	0.38
Standard Unit Result Val	22.40	%DEV	-3.03

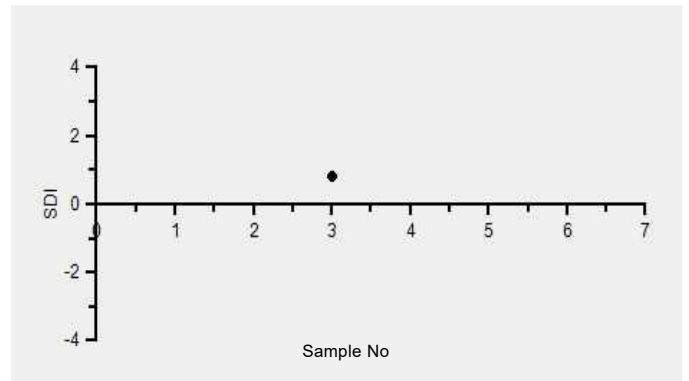
Note : # - Not evaluated / Bimodal distribution

X : SDI more than 4

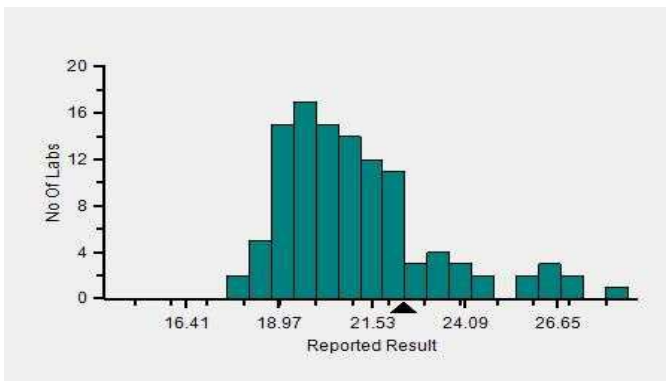
Frequency Histogram



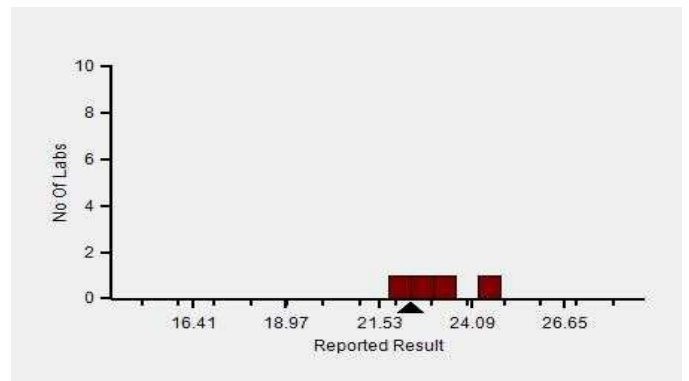
Z-Score Trend - Within Round



Frequency Histogram Your Method



Frequency Histogram Your Analyzer



Lab : 1053

Cycle No : 230310

Lab Name : KRSNAA DIAGNOSTICS LTD, RAJPURA

Sample No : 03

Report Date : 19/12/2023

Sample Date : 07/10/2023

Frequency Histogram Your Method



**Note :** SDI with \* marked are not considered for evaluation

**Comments :**

Haematology - CBC, MCHC (Mean Corpuscular Hb Concentration)						
		N	Mean	SD	CV%	Excluded
	All Analyzer	170	21.53	2.56	11.88	6
<b>Your Analyzer :</b>	<b>Horiba ABX Micros ES 60</b>	<b>5</b>	<b>23.10</b>	<b>0.92</b>	<b>3.98</b>	<b>1</b>
	Horiba Yumizen H550	44	20.97	2.05	9.79	2
	Horiba Yumizen H500	19	20.98	2.10	9.99	-
	Erba ELite 580	13	19.92	0.57	2.84	-
	Mindray BC-5000	12	21.67	0.81	3.73	1
	Horiba ABX Pentra XL 80	8	26.19	3.24	12.38	-
	Nihon Kohden Celltac Alpha	6	21.10	3.19	15.10	-
	Sysmex XP-100	5	24.28	1.59	6.56	-

Remarks: Interpretation of your reports

- a) If your SDI lies between +/- 2.0 SDI then your results are well within limits.
- b) If your SDI lies between +/-2.0 to 2.99 SDI then it is a warning alert flag.
- c) If your SDI is +/- 3.0 SDI or more then it is an action alert flag.

Interpretation when an analyte is reported for multiple samples in a Round:

- a) Reported on 2 samples:
  - Two out of two pass - Acceptable performance
  - One out of two pass - Review for random error & take action if appropriate
  - Both failed - Unacceptable performance, Review for systematic error
- b) Reported on 3 samples:
  - All pass - Acceptable performance
  - Two out of three pass - Review for random error & take action if appropriate
  - One out of three pass - Unacceptable performance, Review for systematic error
  - All failed - Unacceptable performance, Review for systematic error



Lab : 1053

Cycle No : 230310

Lab Name : KRSNAA DIAGNOSTICS LTD, RAJPURA

Sample No : 03

Report Date : 19/12/2023

Sample Date : 07/10/2023

**Haematology - CBC, MCV (Mean Corpuscular Volume), fL**

**Comparative Statistics**

	N	Mean	SD	CV%	Excluded
All Methods	170	127.18	10.21	8.03	1
Calculated - (Your Method)	98	128.18	10.24	7.99	--
Horiba ABX Micros ES 60 - (Your Analyzer)	5	110.70	13.76	12.43	--

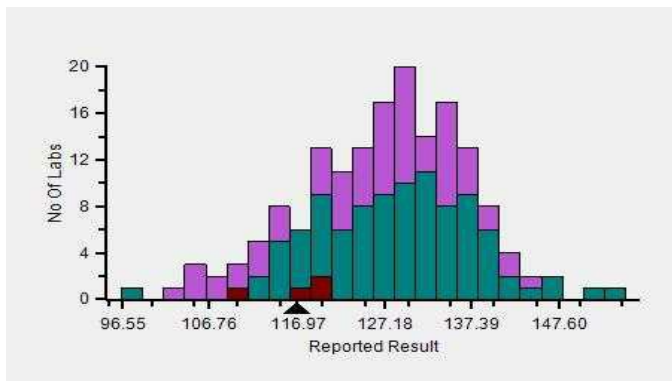
**Evaluation Based On - Equipment wise Peer Grouping**

Your Result	117.00	SDI / z-Score	-0.70
Assigned Value	126.21	Average SDI	-0.70
SDPA	13.200	Uncertainty of AV	2.02
Standard Unit Result Val	117.00	%DEV	5.69

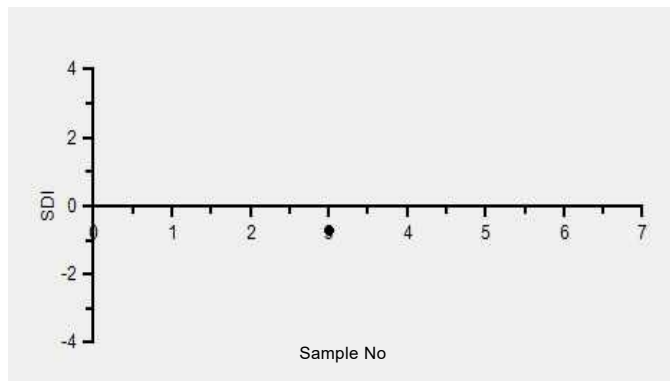
Note : # - Not evaluated / Bimodal distribution

X : SDI more than 4

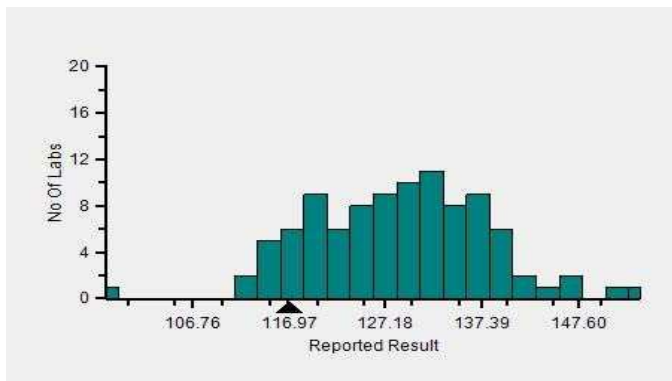
Frequency Histogram



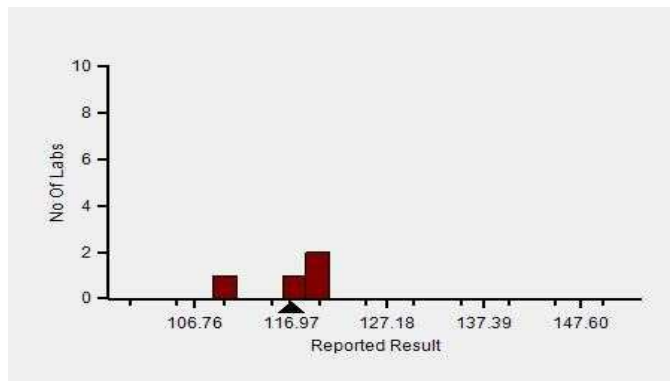
Z-Score Trend - Within Round



Frequency Histogram Your Method



Frequency Histogram Your Analyzer



Lab : 1053

Cycle No : 230310

Lab Name : KRSNAA DIAGNOSTICS LTD, RAJPURA

Sample No : 03

Report Date : 19/12/2023

Sample Date : 07/10/2023

Frequency Histogram Your Method



**Note :** SDI with \* marked are not considered for evaluation

**Comments :**

Haematology - CBC, MCV (Mean Corpuscular Volume)						
		N	Mean	SD	CV%	Excluded
	All Analyzer	170	127.18	10.21	8.03	1
<b>Your Analyzer :</b>	<b>Horiba ABX Micros ES 60</b>	<b>5</b>	<b>110.70</b>	<b>13.76</b>	<b>12.43</b>	-
	Horiba Yumizen H550	45	125.66	7.74	6.16	-
	Horiba Yumizen H500	18	128.24	4.71	3.67	-
	Erba ELite 580	13	133.26	3.51	2.63	-
	Mindray BC-5000	12	138.14	3.63	2.63	1
	Horiba ABX Pentra XL 80	8	113.75	8.57	7.53	-
	Nihon Kohden Celltac Alpha	6	127.61	9.28	7.27	-
	Sysmex XP-100	5	113.34	2.03	1.79	-

Remarks: Interpretation of your reports

- a) If your SDI lies between +/- 2.0 SDI then your results are well within limits.
- b) If your SDI lies between +/-2.0 to 2.99 SDI then it is a warning alert flag.
- c) If your SDI is +/- 3.0 SDI or more then it is an action alert flag.

Interpretation when an analyte is reported for multiple samples in a Round:

- a) Reported on 2 samples:
  - Two out of two pass - Acceptable performance
  - One out of two pass - Review for random error & take action if appropriate
  - Both failed - Unacceptable performance, Review for systematic error
- b) Reported on 3 samples:
  - All pass - Acceptable performance
  - Two out of three pass - Review for random error & take action if appropriate
  - One out of three pass - Unacceptable performance, Review for systematic error
  - All failed - Unacceptable performance, Review for systematic error



Lab : 1053

Cycle No : 230310

Lab Name : KRSNAA DIAGNOSTICS LTD, RAJPURA

Sample No : 03

Report Date : 19/12/2023

Sample Date : 07/10/2023

**Haematology - CBC, Platelet Count, 1000/  $\mu$ L**

**Comparative Statistics**

	N	Mean	SD	CV%	Excluded
All Methods	170	83.98	16.56	19.71	27
Impedance - (Your Method)	159	83.87	15.70	18.72	26
Horiba ABX Micros ES 60 - (Your Analyzer)	5	84.80	13.83	16.31	--

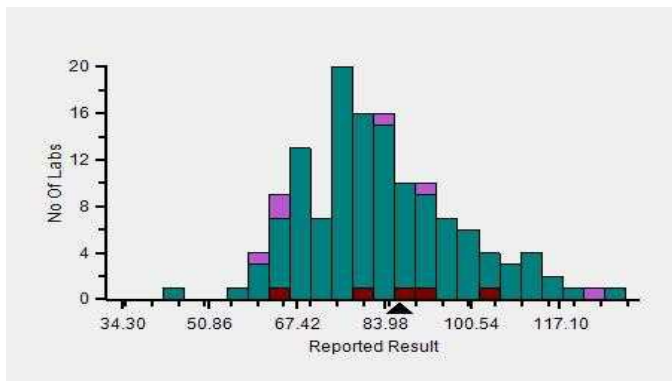
**Evaluation Based On - Equipment wise Peer Grouping**

<b>Your Result</b>	87.00	<b>SDI / z-Score</b>	0.40
<b>Assigned Value</b>	81.43	<b>Average SDI</b>	-0.07
<b>SDPA</b>	14.055	<b>Uncertainty of AV</b>	2.27
<b>Standard Unit Result Val</b>	87.00	<b>%DEV</b>	2.59

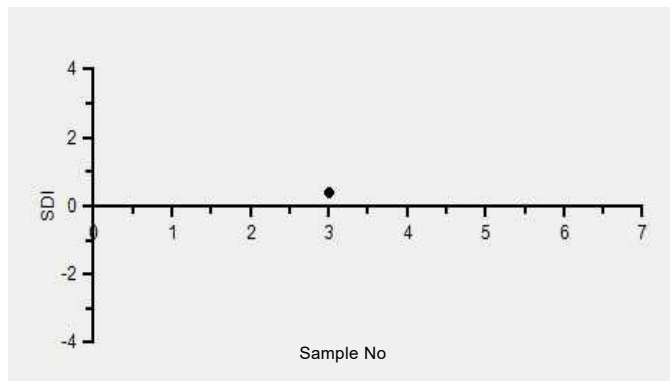
Note : # - Not evaluated / Bimodal distribution

X : SDI more than 4

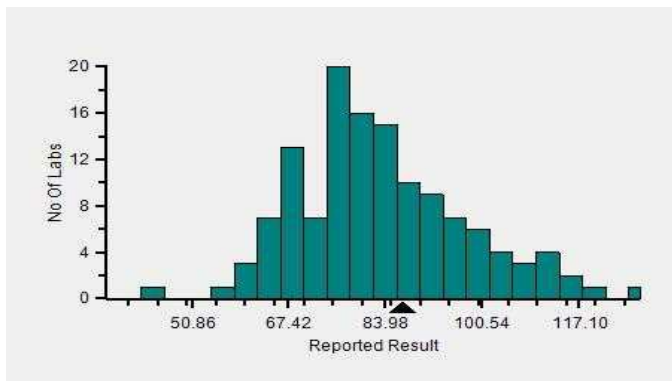
Frequency Histogram



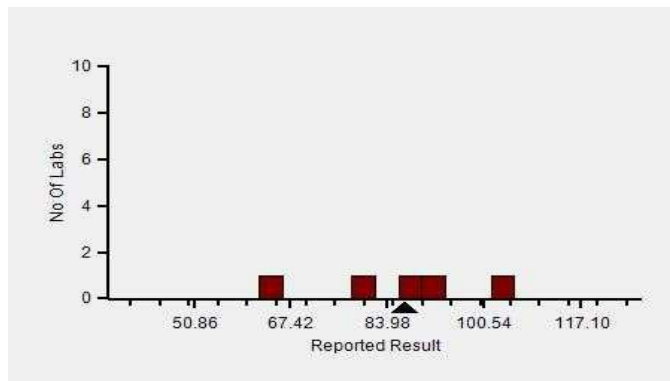
Z-Score Trend - Within Round



Frequency Histogram Your Method



Frequency Histogram Your Analyzer



Lab : 1053

Cycle No : 230310

Lab Name : KRSNAA DIAGNOSTICS LTD, RAJPURA

Sample No : 03

Report Date : 19/12/2023

Sample Date : 07/10/2023

Frequency Histogram Your Method



**Note :** SDI with \* marked are not considered for evaluation

**Comments :**

Haematology - CBC, Platelet Count		N	Mean	SD	CV%	Excluded
	All Analyzer	170	83.98	16.56	19.71	27
<b>Your Analyzer :</b>	<b>Horiba ABX Micros ES 60</b>	<b>5</b>	<b>84.80</b>	<b>13.83</b>	<b>16.31</b>	<b>-</b>
	Horiba Yumizen H550	46	87.19	11.88	13.63	4
	Horiba Yumizen H500	17	74.44	17.84	23.97	1
	Erba ELite 580	13	80.17	4.71	5.87	1
	Mindray BC-5000	12	79.46	6.02	7.58	1
	Horiba ABX Pentra XL 80	8	134.00	10.86	8.11	4
	Nihon Kohden Celltac Alpha	6	77.93	12.12	15.56	-
	Sysmex XP-100	5	71.25	8.06	11.31	1

Remarks: Interpretation of your reports

- If your SDI lies between +/- 2.0 SDI then your results are well within limits.
- If your SDI lies between +/-2.0 to 2.99 SDI then it is a warning alert flag.
- If your SDI is +/- 3.0 SDI or more then it is an action alert flag.

Interpretation when an analyte is reported for multiple samples in a Round:

a) Reported on 2 samples:

- Two out of two pass - Acceptable performance
- One out of two pass - Review for random error & take action if appropriate
- Both failed - Unacceptable performance, Review for systematic error

b) Reported on 3 samples:

- All pass - Acceptable performance
- Two out of three pass - Review for random error & take action if appropriate
- One out of three pass - Unacceptable performance, Review for systematic error
- All failed - Unacceptable performance, Review for systematic error



Lab : 1053

Cycle No : 230310

Lab Name : KRSNAA DIAGNOSTICS LTD, RAJPURA

Sample No : 03

Report Date : 19/12/2023

Sample Date : 07/10/2023

**Haematology - CBC, RDW CV%, %**

**Comparative Statistics**

	N	Mean	SD	CV%	Excluded
All Methods	161	27.35	6.33	23.16	8
Calculated - (Your Method)	144	27.07	6.33	23.36	7
Horiba ABX Micros ES 60 - (Your Analyzer)	5	26.08	6.08	23.30	--

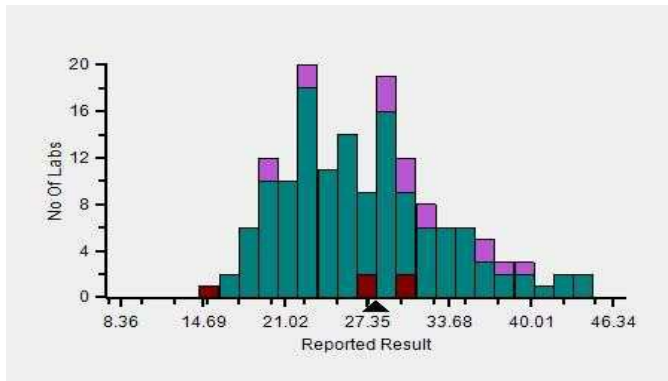
**Evaluation Based On - Equipment wise Peer Grouping**

Your Result	28.00	SDI / z-Score	1.12
Assigned Value	23.70	Average SDI	1.41
SDPA	3.830	Uncertainty of AV	0.62
Standard Unit Result Val	28.00	%DEV	7.36

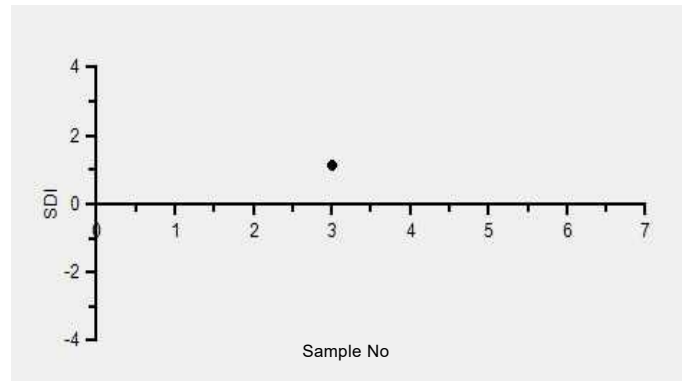
Note : # - Not evaluated / Bimodal distribution

X : SDI more than 4

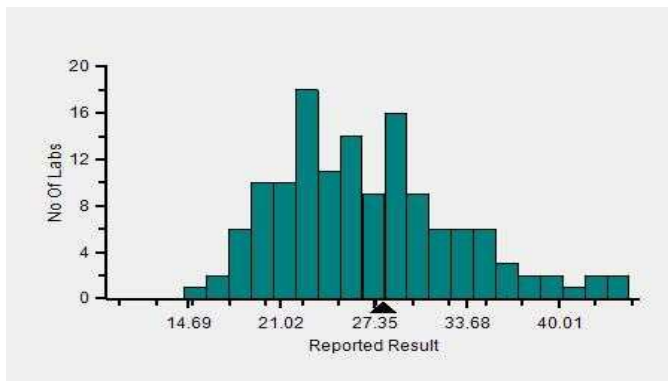
Frequency Histogram



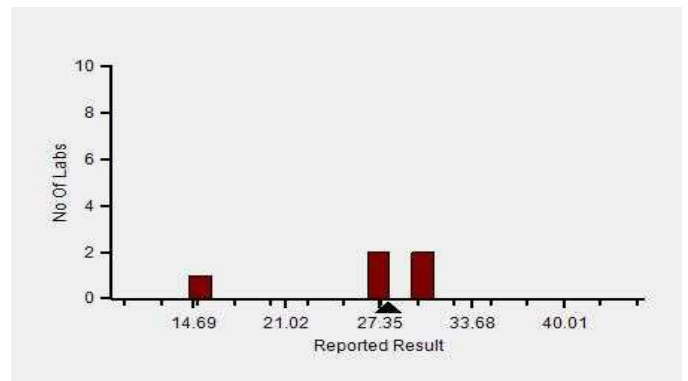
Z-Score Trend - Within Round



Frequency Histogram Your Method



Frequency Histogram Your Analyzer



Lab : 1053

Cycle No : 230310

Lab Name : KRSNAA DIAGNOSTICS LTD, RAJPURA

Sample No : 03

Report Date : 19/12/2023

Sample Date : 07/10/2023

Frequency Histogram Your Method



**Note :** SDI with \* marked are not considered for evaluation

**Comments :**

Haematology - CBC, RDW CV%		N	Mean	SD	CV%	Excluded
	All Analyzer	161	27.35	6.33	23.16	8
<b>Your Analyzer :</b>	<b>Horiba ABX Micros ES 60</b>	<b>5</b>	<b>26.08</b>	<b>6.08</b>	<b>23.30</b>	-
	Horiba Yumizen H550	45	24.07	4.22	17.54	2
	Horiba Yumizen H500	18	22.62	3.36	14.86	-
	Erba ELite 580	13	29.67	1.94	6.55	2
	Mindray BC-5000	11	32.21	3.86	11.98	1
	Horiba ABX Pentra XL 80	7	21.04	1.70	8.09	-
	Nihon Kohden Celltac Alpha	6	32.35	5.77	17.84	-
	Beckman Coulter DxH 560	5	35.90	5.39	15.03	-

Remarks: Interpretation of your reports

- If your SDI lies between +/- 2.0 SDI then your results are well within limits.
- If your SDI lies between +/-2.0 to 2.99 SDI then it is a warning alert flag.
- If your SDI is +/- 3.0 SDI or more then it is an action alert flag.

Interpretation when an analyte is reported for multiple samples in a Round:

- Reported on 2 samples:
  - Two out of two pass - Acceptable performance
  - One out of two pass - Review for random error & take action if appropriate
  - Both failed - Unacceptable performance, Review for systematic error
- Reported on 3 samples:
  - All pass - Acceptable performance
  - Two out of three pass - Review for random error & take action if appropriate
  - One out of three pass - Unacceptable performance, Review for systematic error
  - All failed - Unacceptable performance, Review for systematic error





Lab : 1053

Cycle No : 230310

Lab Name : KRSNAA DIAGNOSTICS LTD, RAJPURA

Sample No : 03

Report Date : 19/12/2023

Sample Date : 07/10/2023

**Haematology - CBC, Total Leucocytes (WBC) count, 1000/  $\mu$ L**

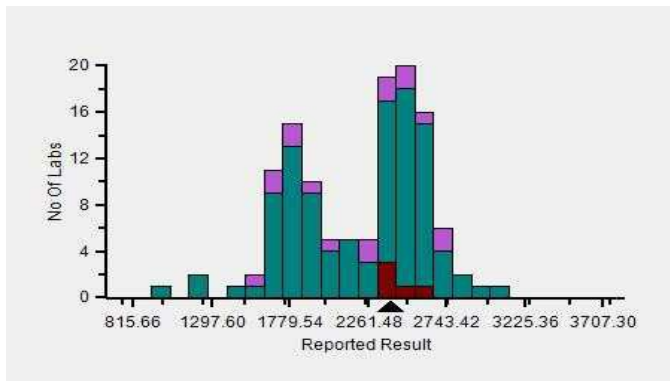
**Comparative Statistics**

	N	Mean	SD	CV%	Excluded
All Methods	170	2,261.48	481.94	21.31	42
Impedance - (Your Method)	146	2,262.87	500.19	22.10	38
Horiba ABX Micros ES 60 - (Your Analyzer)	5	2,460.00	89.44	3.64	--

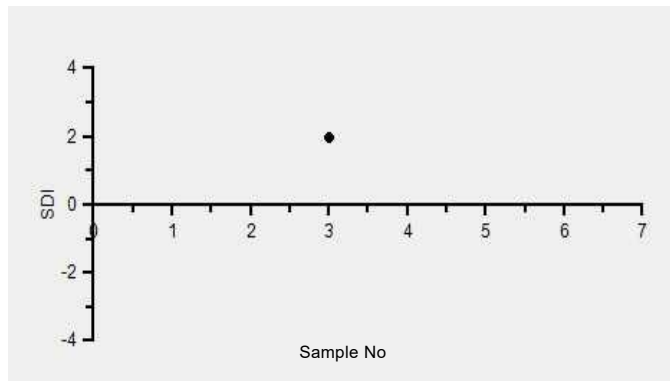
<b>Your Result</b>	2.40	<b>SDI / z-Score</b>	1.97
<b>Assigned Value</b>	1,834.53	<b>Average SDI</b>	1.88
<b>SDPA</b>	286.500	<b>Uncertainty of AV</b>	52.80
<b>Standard Unit Result Val</b>	2,400.00	<b>%DEV</b>	-2.44

Note : # - Not evaluated / Bimodal distribution  
X : SDI more than 4

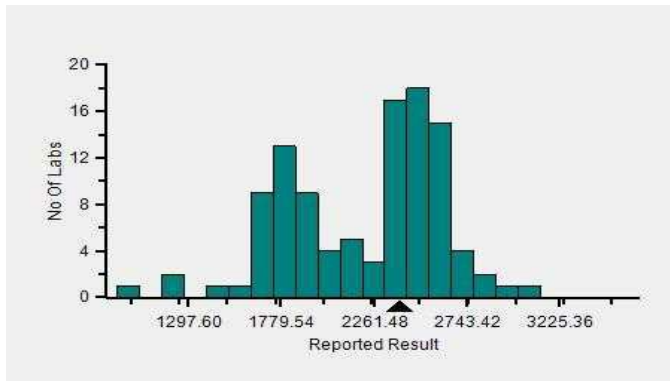
Frequency Histogram



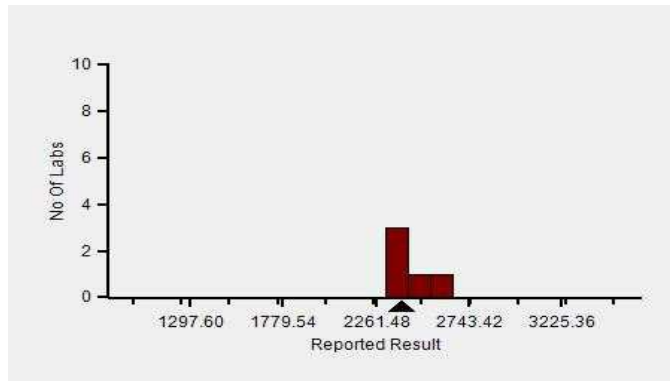
Z-Score Trend - Within Round



Frequency Histogram Your Method



Frequency Histogram Your Analyzer



Lab : 1053

Cycle No : 230310

Lab Name : KRSNAA DIAGNOSTICS LTD, RAJPURA

Sample No : 03

Report Date : 19/12/2023

Sample Date : 07/10/2023

Frequency Histogram Your Method



**Note :** SDI with \* marked are not considered for evaluation

**Comments :**

**Haematology - CBC, Total Leucocytes (WBC) count**

	N	Mean	SD	CV%	Excluded
All Analyzer	170	2,261.48	481.94	21.31	42
<b>Your Analyzer :</b> <b>Horiba ABX Micros ES 60</b>	<b>5</b>	<b>2,460.00</b>	<b>89.44</b>	<b>3.64</b>	<b>-</b>
Horiba Yumizen H550	45	1,835.53	252.65	13.76	7
Horiba Yumizen H500	18	1,859.29	375.10	20.17	4
Erba ELite 580	13	2,500.00	58.55	2.34	5
Mindray BC-5000	12	2,525.46	206.46	8.18	1
Horiba ABX Pentra XL 80	8	4,400.00	0.00	0.00	6
Nihon Kohden Celltac Alpha	6	2,548.00	97.57	3.83	1
Sysmex XP-100	5	2,500.00	264.58	10.58	2

Remarks: Interpretation of your reports

- a) If your SDI lies between +/- 2.0 SDI then your results are well within limits.
- b) If your SDI lies between +/-2.0 to 2.99 SDI then it is a warning alert flag.
- c) If your SDI is +/- 3.0 SDI or more then it is an action alert flag.

Interpretation when an analyte is reported for multiple samples in a Round:

- a) Reported on 2 samples:
  - Two out of two pass - Acceptable performance
  - One out of two pass - Review for random error & take action if appropriate
  - Both failed - Unacceptable performance, Review for systematic error
- b) Reported on 3 samples:
  - All pass - Acceptable performance
  - Two out of three pass - Review for random error & take action if appropriate
  - One out of three pass - Unacceptable performance, Review for systematic error
  - All failed - Unacceptable performance, Review for systematic error

*Dr Puneet Kumar Nigam*

**Dr Puneet Kumar Nigam**  
**PT coordinator & Technical Manager, MHL EQAS**  
Unit No. 409-416.  
Commercial Building - 1A  
Kohinoor Mall, Kirool Road, Kurla (W),  
Mumbai - 400070

This is a computer generated report hence signature is not required



PC-1022

Lab : 1053

Cycle No : 230310

Lab Name : KRSNAA DIAGNOSTICS LTD, RAJPURA

Sample No : 04

Report Date : 19/12/2023

Sample Date : 07/10/2023

**Haematology - CBC, Erythrocyte (RBC) Count, mill/cu.mm**

**Comparative Statistics**

	N	Mean	SD	CV%	Excluded
All Methods	169	1.47	0.09	6.00	6
Impedance - (Your Method)	165	1.47	0.09	6.20	5
Horiba ABX Micros ES 60 - (Your Analyzer)	5	1.50	0.06	3.88	1

**Evaluation Based On - Equipment wise Peer Grouping**

Your Result	1.54	SDI / z-Score	0.33
Assigned Value	1.49	Average SDI	0.31
SDPA	0.160	Uncertainty of AV	0.03
Standard Unit Result Val	1.54	%DEV	3.01

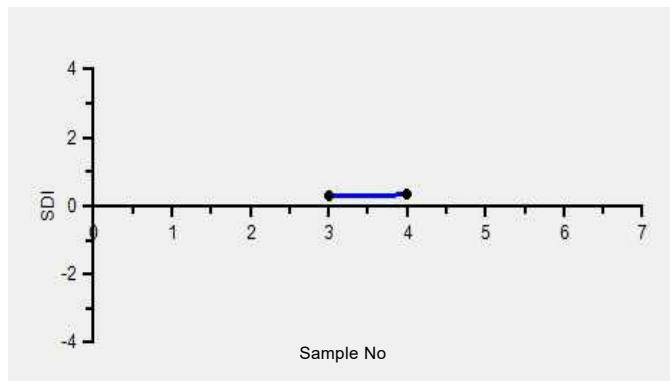
Note : # - Not evaluated / Bimodal distribution

X : SDI more than 4

Frequency Histogram



Z-Score Trend - Within Round



Frequency Histogram Your Method



Frequency Histogram Your Analyzer



Lab : 1053

Cycle No : 230310

Lab Name : KRSNAA DIAGNOSTICS LTD, RAJPURA

Sample No : 04

Report Date : 19/12/2023

Sample Date : 07/10/2023

Frequency Histogram Your Method



**Note :** SDI with \* marked are not considered for evaluation

**Comments :**

**Haematology - CBC, Erythrocyte (RBC) Count**

		N	Mean	SD	CV%	Excluded
	All Analyzer	169	1.47	0.09	6.00	6
<b>Your Analyzer :</b>	<b>Horiba ABX Micros ES 60</b>	<b>5</b>	<b>1.50</b>	<b>0.06</b>	<b>3.88</b>	<b>1</b>
	Horiba Yumizen H550	47	1.45	0.12	8.29	1
	Horiba Yumizen H550	47	1.45	0.12	8.29	1
	Horiba Yumizen H500	17	1.46	0.07	4.88	1
	Horiba Yumizen H500	17	1.46	0.07	4.88	1
	Erba ELite 580	13	1.45	0.06	4.21	-
	Mindray BC-5000	12	1.49	0.06	3.89	-
	Horiba ABX Pentra XL 80	9	1.43	0.03	2.38	-

Remarks: Interpretation of your reports

- If your SDI lies between +/- 2.0 SDI then your results are well within limits.
- If your SDI lies between +/-2.0 to 2.99 SDI then it is a warning alert flag.
- If your SDI is +/- 3.0 SDI or more then it is an action alert flag.

Interpretation when an analyte is reported for multiple samples in a Round:

a) Reported on 2 samples:

- Two out of two pass - Acceptable performance
- One out of two pass - Review for random error & take action if appropriate
- Both failed - Unacceptable performance, Review for systematic error

b) Reported on 3 samples:

- All pass - Acceptable performance
- Two out of three pass - Review for random error & take action if appropriate
- One out of three pass - Unacceptable performance, Review for systematic error
- All failed - Unacceptable performance, Review for systematic error



Lab : 1053

Cycle No : 230310

Lab Name : KRSNAA DIAGNOSTICS LTD, RAJPURA

Sample No : 04

Report Date : 19/12/2023

Sample Date : 07/10/2023

**Haematology - CBC, Haemoglobin, g/dL**

**Comparative Statistics**

	N	Mean	SD	CV%	Excluded
All Methods	169	4.22	0.28	6.52	4
Photometric - (Your Method)	45	4.11	0.29	7.03	3
Horiba ABX Micros ES 60 - (Your Analyzer)	5	4.30	0.08	1.91	1

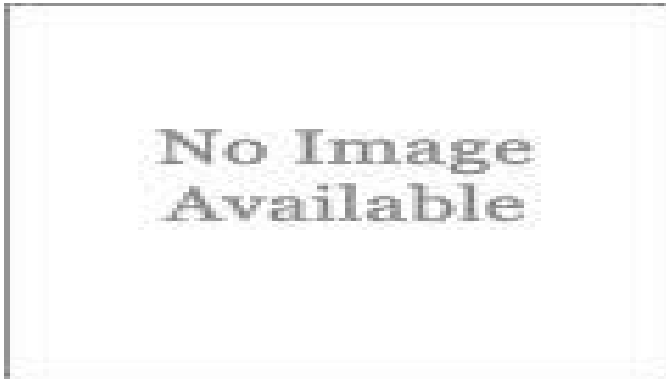
**Evaluation Based On - Equipment wise Peer Grouping**

Your Result	4.30	SDI / z-Score	0.81
Assigned Value	4.07	Average SDI	0.82
SDPA	0.280	Uncertainty of AV	0.04
Standard Unit Result Val	4.30	%DEV	

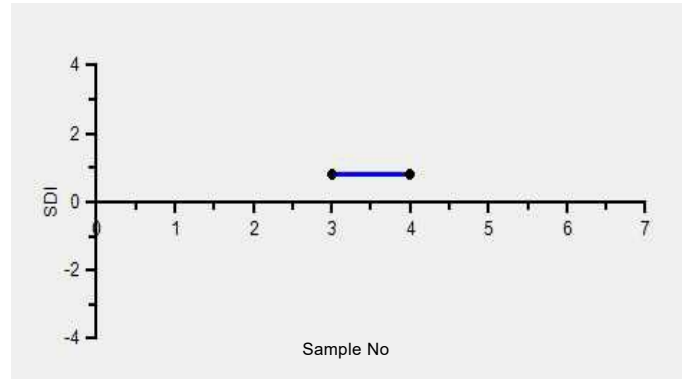
Note : # - Not evaluated / Bimodal distribution

X : SDI more than 4

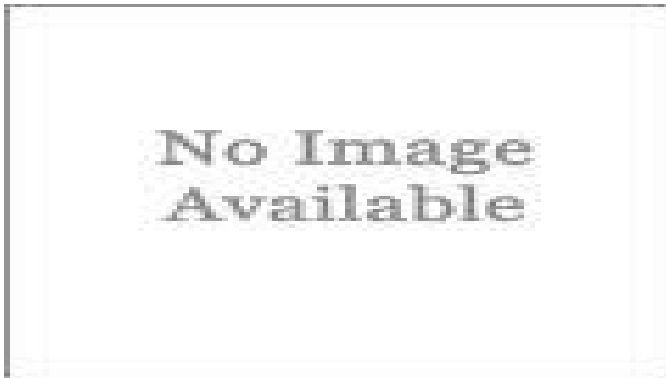
Frequency Histogram



Z-Score Trend - Within Round



Frequency Histogram Your Method



Frequency Histogram Your Analyzer



Lab : 1053

Cycle No : 230310

Lab Name : KRSNAA DIAGNOSTICS LTD, RAJPURA

Sample No : 04

Report Date : 19/12/2023

Sample Date : 07/10/2023

Frequency Histogram Your Method



**Note :** SDI with \* marked are not considered for evaluation

**Comments :**

Haematology - CBC, Haemoglobin		N	Mean	SD	CV%	Excluded
	All Analyzer	169	4.22	0.28	6.52	4
<b>Your Analyzer :</b>	<b>Horiba ABX Micros ES 60</b>	<b>5</b>	<b>4.30</b>	<b>0.08</b>	<b>1.91</b>	<b>1</b>
	Horiba Yumizen H550	47	4.05	0.12	2.89	1
	Horiba Yumizen H550	47	4.05	0.12	2.89	1
	Horiba Yumizen H500	17	4.03	0.21	5.24	1
	Horiba Yumizen H500	17	4.03	0.21	5.24	1
	Erba ELite 580	13	4.30	0.20	4.74	-
	Horiba ABX Pentra XL 80	9	4.26	0.12	2.91	-
	Mindray BC 5000	8	4.59	0.06	1.40	-

Remarks: Interpretation of your reports

- If your SDI lies between +/- 2.0 SDI then your results are well within limits.
- If your SDI lies between +/-2.0 to 2.99 SDI then it is a warning alert flag.
- If your SDI is +/- 3.0 SDI or more then it is an action alert flag.

Interpretation when an analyte is reported for multiple samples in a Round:

- Reported on 2 samples:
  - Two out of two pass - Acceptable performance
  - One out of two pass - Review for random error & take action if appropriate
  - Both failed - Unacceptable performance, Review for systematic error
- Reported on 3 samples:
  - All pass - Acceptable performance
  - Two out of three pass - Review for random error & take action if appropriate
  - One out of three pass - Unacceptable performance, Review for systematic error
  - All failed - Unacceptable performance, Review for systematic error



Lab : 1053

Cycle No : 230310

Lab Name : KRSNAA DIAGNOSTICS LTD, RAJPURA

Sample No : 04

Report Date : 19/12/2023

Sample Date : 07/10/2023

**Haematology - CBC, Hematocrit, %**

**Comparative Statistics**

	N	Mean	SD	CV%	Excluded
All Methods	162	18.52	2.30	12.42	4
Calculated - (Your Method)	101	18.48	2.45	13.25	2
Horiba ABX Micros ES 60 - (Your Analyzer)	5	17.50	0.81	4.64	1

**Evaluation Based On - Equipment wise Peer Grouping**

Your Result	18.10	SDI / z-Score	-0.16
Assigned Value	18.57	Average SDI	-0.22
SDPA	2.900	Uncertainty of AV	0.47
Standard Unit Result Val	18.10	%DEV	3.43

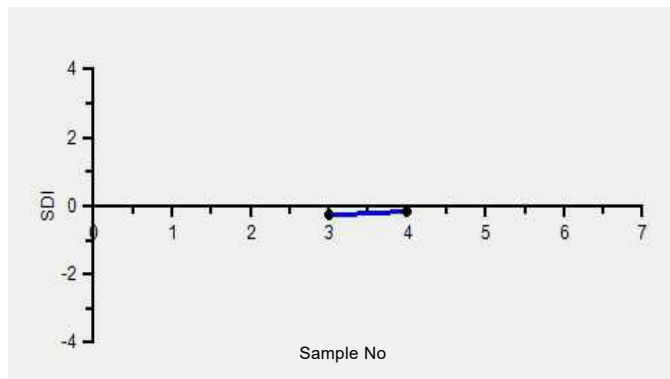
Note : # - Not evaluated / Bimodal distribution

X : SDI more than 4

Frequency Histogram



Z-Score Trend - Within Round



Frequency Histogram Your Method



Frequency Histogram Your Analyzer



Lab : 1053

Cycle No : 230310

Lab Name : KRSNAA DIAGNOSTICS LTD, RAJPURA

Sample No : 04

Report Date : 19/12/2023

Sample Date : 07/10/2023

Frequency Histogram Your Method



**Note :** SDI with \* marked are not considered for evaluation

**Comments :**

Haematology - CBC, Hematocrit						
		N	Mean	SD	CV%	Excluded
	All Analyzer	162	18.52	2.30	12.42	4
<b>Your Analyzer :</b>	<b>Horiba ABX Micros ES 60</b>	<b>5</b>	<b>17.50</b>	<b>0.81</b>	<b>4.64</b>	<b>1</b>
	Horiba Yumizen H550	47	17.87	2.29	12.79	-
	Horiba Yumizen H550	47	17.87	2.29	12.79	-
	Horiba Yumizen H500	17	17.92	2.09	11.69	-
	Horiba Yumizen H500	17	17.92	2.09	11.69	-
	Erba ELite 580	13	19.59	1.00	5.09	-
	Mindray BC-5000	12	20.68	2.13	10.32	-
	Horiba ABX Pentra XL 80	8	16.31	1.91	11.71	-

Remarks: Interpretation of your reports

- If your SDI lies between +/- 2.0 SDI then your results are well within limits.
- If your SDI lies between +/-2.0 to 2.99 SDI then it is a warning alert flag.
- If your SDI is +/- 3.0 SDI or more then it is an action alert flag.

Interpretation when an analyte is reported for multiple samples in a Round:

- Reported on 2 samples:
  - Two out of two pass - Acceptable performance
  - One out of two pass - Review for random error & take action if appropriate
  - Both failed - Unacceptable performance, Review for systematic error
- Reported on 3 samples:
  - All pass - Acceptable performance
  - Two out of three pass - Review for random error & take action if appropriate
  - One out of three pass - Unacceptable performance, Review for systematic error
  - All failed - Unacceptable performance, Review for systematic error





Lab : 1053

Cycle No : 230310

Lab Name : KRSNAA DIAGNOSTICS LTD, RAJPURA

Sample No : 04

Report Date : 19/12/2023

Sample Date : 07/10/2023

**Haematology - CBC, MCH (Mean Corpuscular Hb), pg**

**Comparative Statistics**

	N	Mean	SD	CV%	Excluded
All Methods	169	28.76	2.07	7.18	3
Calculated - (Your Method)	118	28.70	2.10	7.30	3
Horiba ABX Micros ES 60 - (Your Analyzer)	5	29.30	2.58	8.81	--

**Evaluation Based On - Equipment wise Peer Grouping**

Your Result	28.00	SDI / z-Score	0.23
Assigned Value	27.38	Average SDI	0.13
SDPA	2.700	Uncertainty of AV	0.44
Standard Unit Result Val	28.00	%DEV	-4.44

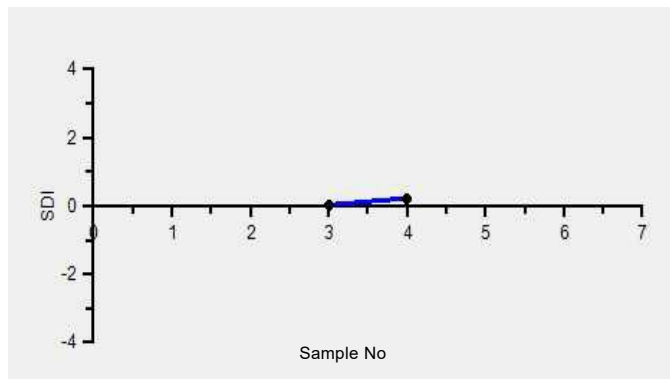
Note : # - Not evaluated / Bimodal distribution

X : SDI more than 4

Frequency Histogram



Z-Score Trend - Within Round



Frequency Histogram Your Method



Frequency Histogram Your Analyzer



Lab : 1053

Cycle No : 230310

Lab Name : KRSNAA DIAGNOSTICS LTD, RAJPURA

Sample No : 04

Report Date : 19/12/2023

Sample Date : 07/10/2023

Frequency Histogram Your Method



**Note :** SDI with \* marked are not considered for evaluation

**Comments :**

Haematology - CBC, MCH (Mean Corpuscular Hb)						
		N	Mean	SD	CV%	Excluded
	All Analyzer	169	28.76	2.07	7.18	3
<b>Your Analyzer :</b>	<b>Horiba ABX Micros ES 60</b>	<b>5</b>	<b>29.30</b>	<b>2.58</b>	<b>8.81</b>	-
	Horiba Yumizen H550	46	27.88	1.91	6.85	1
	Horiba Yumizen H550	46	27.88	1.91	6.85	1
	Horiba Yumizen H500	18	27.75	1.19	4.29	-
	Horiba Yumizen H500	18	27.75	1.19	4.29	-
	Erba ELite 580	13	29.70	0.71	2.40	-
	Mindray BC-5000	12	30.94	1.13	3.65	-
	Horiba ABX Pentra XL 80	9	29.66	0.31	1.04	-

Remarks: Interpretation of your reports

- a) If your SDI lies between +/- 2.0 SDI then your results are well within limits.
- b) If your SDI lies between +/-2.0 to 2.99 SDI then it is a warning alert flag.
- c) If your SDI is +/- 3.0 SDI or more then it is an action alert flag.

Interpretation when an analyte is reported for multiple samples in a Round:

- a) Reported on 2 samples:
  - Two out of two pass - Acceptable performance
  - One out of two pass - Review for random error & take action if appropriate
  - Both failed - Unacceptable performance, Review for systematic error
- b) Reported on 3 samples:
  - All pass - Acceptable performance
  - Two out of three pass - Review for random error & take action if appropriate
  - One out of three pass - Unacceptable performance, Review for systematic error
  - All failed - Unacceptable performance, Review for systematic error



Lab : 1053

Cycle No : 230310

Lab Name : KRSNAA DIAGNOSTICS LTD, RAJPURA

Sample No : 04

Report Date : 19/12/2023

Sample Date : 07/10/2023

**Haematology - CBC, MCHC (Mean Corpuscular Hb Concentration), g/dL**

**Comparative Statistics**

	N	Mean	SD	CV%	Excluded
All Methods	169	22.66	2.42	10.67	7
Calculated - (Your Method)	117	22.24	2.21	9.95	6
Horiba ABX Micros ES 60 - (Your Analyzer)	5	24.10	0.54	2.22	1

**Evaluation Based On - Equipment wise Peer Grouping**

Your Result	23.80	SDI / z-Score	0.72
Assigned Value	21.96	Average SDI	0.77
SDPA	2.560	Uncertainty of AV	0.41
Standard Unit Result Val	23.80	%DEV	-1.24

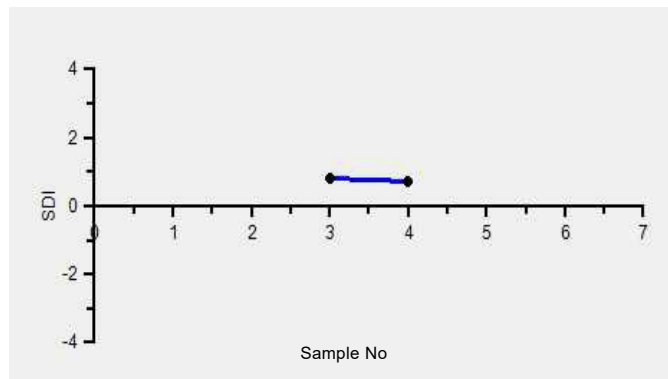
Note : # - Not evaluated / Bimodal distribution

X : SDI more than 4

Frequency Histogram



Z-Score Trend - Within Round



Frequency Histogram Your Method



Frequency Histogram Your Analyzer



Lab : 1053

Cycle No : 230310

Lab Name : KRSNAA DIAGNOSTICS LTD, RAJPURA

Sample No : 04

Report Date : 19/12/2023

Sample Date : 07/10/2023

Frequency Histogram Your Method



**Note :** SDI with \* marked are not considered for evaluation

**Comments :**

Haematology - CBC, MCHC (Mean Corpuscular Hb Concentration)						
		N	Mean	SD	CV%	Excluded
	All Analyzer	169	22.66	2.42	10.67	7
<b>Your Analyzer :</b>	<b>Horiba ABX Micros ES 60</b>	<b>5</b>	<b>24.10</b>	<b>0.54</b>	<b>2.22</b>	<b>1</b>
	Horiba Yumizen H550	45	22.18	2.03	9.13	3
	Horiba Yumizen H550	45	22.18	2.03	9.13	3
	Horiba Yumizen H500	19	22.06	1.25	5.67	-
	Horiba Yumizen H500	19	22.06	1.25	5.67	-
	Erba ELite 580	13	22.03	0.48	2.19	-
	Mindray BC-5000	12	21.72	1.40	6.44	1
	Horiba ABX Pentra XL 80	9	26.74	2.71	10.12	-

Remarks: Interpretation of your reports

- a) If your SDI lies between +/- 2.0 SDI then your results are well within limits.
- b) If your SDI lies between +/-2.0 to 2.99 SDI then it is a warning alert flag.
- c) If your SDI is +/- 3.0 SDI or more then it is an action alert flag.

Interpretation when an analyte is reported for multiple samples in a Round:

- a) Reported on 2 samples:
  - Two out of two pass - Acceptable performance
  - One out of two pass - Review for random error & take action if appropriate
  - Both failed - Unacceptable performance, Review for systematic error
- b) Reported on 3 samples:
  - All pass - Acceptable performance
  - Two out of three pass - Review for random error & take action if appropriate
  - One out of three pass - Unacceptable performance, Review for systematic error
  - All failed - Unacceptable performance, Review for systematic error



Lab : 1053

Cycle No : 230310

Lab Name : KRSNAA DIAGNOSTICS LTD, RAJPURA

Sample No : 04

Report Date : 19/12/2023

Sample Date : 07/10/2023

**Haematology - CBC, MCV (Mean Corpuscular Volume), fL**

**Comparative Statistics**

	N	Mean	SD	CV%	Excluded
All Methods	169	127.06	12.09	9.52	1
Calculated - (Your Method)	100	128.35	11.91	9.28	--
Horiba ABX Micros ES 60 - (Your Analyzer)	5	113.20	12.48	11.02	--

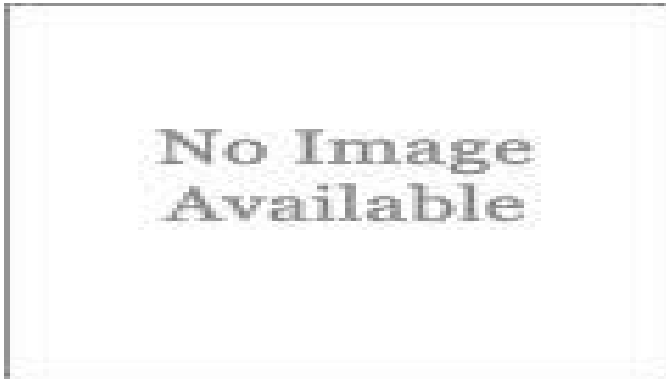
**Evaluation Based On - Equipment wise Peer Grouping**

Your Result	117.00	SDI / z-Score	-0.69
Assigned Value	125.10	Average SDI	-0.70
SDPA	11.700	Uncertainty of AV	1.81
Standard Unit Result Val	117.00	%DEV	3.36

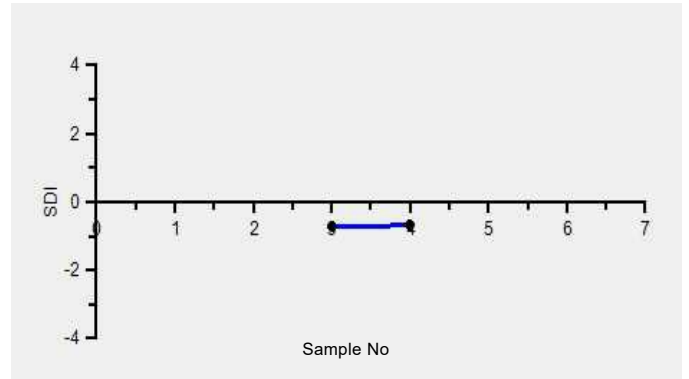
Note : # - Not evaluated / Bimodal distribution

X : SDI more than 4

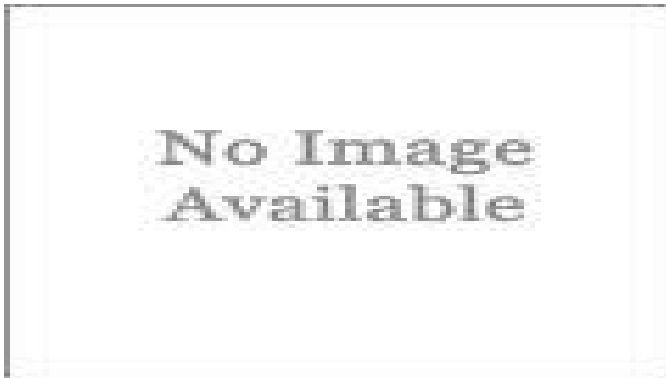
Frequency Histogram



Z-Score Trend - Within Round



Frequency Histogram Your Method



Frequency Histogram Your Analyzer



Lab : 1053

Cycle No : 230310

Lab Name : KRSNAA DIAGNOSTICS LTD, RAJPURA

Sample No : 04

Report Date : 19/12/2023

Sample Date : 07/10/2023

Frequency Histogram Your Method



**Note :** SDI with \* marked are not considered for evaluation

**Comments :**

Haematology - CBC, MCV (Mean Corpuscular Volume)		N	Mean	SD	CV%	Excluded
	All Analyzer	169	127.06	12.09	9.52	1
<b>Your Analyzer :</b>	<b>Horiba ABX Micros ES 60</b>	<b>5</b>	<b>113.20</b>	<b>12.48</b>	<b>11.02</b>	-
	Horiba Yumizen H550	46	124.09	8.71	7.02	-
	Horiba Yumizen H550	46	124.09	8.71	7.02	-
	Horiba Yumizen H500	18	126.01	3.90	3.10	-
	Horiba Yumizen H500	18	126.01	3.90	3.10	-
	Erba ELite 580	13	134.87	3.18	2.36	-
	Mindray BC-5000	12	142.99	6.67	4.66	1
	Horiba ABX Pentra XL 80	9	111.89	10.48	9.37	-

Remarks: Interpretation of your reports

- a) If your SDI lies between +/- 2.0 SDI then your results are well within limits.
- b) If your SDI lies between +/-2.0 to 2.99 SDI then it is a warning alert flag.
- c) If your SDI is +/- 3.0 SDI or more then it is an action alert flag.

Interpretation when an analyte is reported for multiple samples in a Round:

- a) Reported on 2 samples:
  - Two out of two pass - Acceptable performance
  - One out of two pass - Review for random error & take action if appropriate
  - Both failed - Unacceptable performance, Review for systematic error
- b) Reported on 3 samples:
  - All pass - Acceptable performance
  - Two out of three pass - Review for random error & take action if appropriate
  - One out of three pass - Unacceptable performance, Review for systematic error
  - All failed - Unacceptable performance, Review for systematic error



Lab : 1053

Cycle No : 230310

Lab Name : KRSNAA DIAGNOSTICS LTD, RAJPURA

Sample No : 04

Report Date : 19/12/2023

Sample Date : 07/10/2023

**Haematology - CBC, Platelet Count, 1000/  $\mu$ L**

**Comparative Statistics**

	N	Mean	SD	CV%	Excluded
All Methods	169	145.29	21.38	14.71	13
Impedance - (Your Method)	160	146.50	21.31	14.55	12
Horiba ABX Micros ES 60 - (Your Analyzer)	5	145.80	11.52	7.90	--

**Evaluation Based On - Equipment wise Peer Grouping**

Your Result	132.00	SDI / z-Score	-0.53
Assigned Value	143.16	Average SDI	-0.07
SDPA	21.200	Uncertainty of AV	3.31
Standard Unit Result Val	132.00	%DEV	-9.47

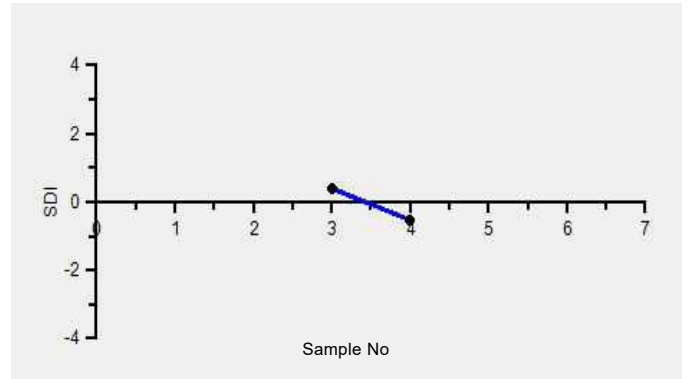
Note : # - Not evaluated / Bimodal distribution

X : SDI more than 4

Frequency Histogram



Z-Score Trend - Within Round



Frequency Histogram Your Method



Frequency Histogram Your Analyzer



Lab : 1053

Cycle No : 230310

Lab Name : KRSNAA DIAGNOSTICS LTD, RAJPURA

Sample No : 04

Report Date : 19/12/2023

Sample Date : 07/10/2023

Frequency Histogram Your Method



**Note :** SDI with \* marked are not considered for evaluation

**Comments :**

Haematology - CBC, Platelet Count		N	Mean	SD	CV%	Excluded
	All Analyzer	169	145.29	21.38	14.71	13
<b>Your Analyzer :</b>	<b>Horiba ABX Micros ES 60</b>	<b>5</b>	<b>145.80</b>	<b>11.52</b>	<b>7.90</b>	-
	Horiba Yumizen H550	47	151.44	16.93	11.18	1
	Horiba Yumizen H550	47	151.44	16.93	11.18	1
	Horiba Yumizen H500	17	118.19	18.38	15.55	-
	Horiba Yumizen H500	17	118.19	18.38	15.55	-
	Erba ELite 580	13	146.17	8.39	5.74	1
	Mindray BC-5000	12	145.64	8.88	6.10	1
	Horiba ABX Pentra XL 80	9	155.40	16.55	10.65	4

Remarks: Interpretation of your reports

- a) If your SDI lies between +/- 2.0 SDI then your results are well within limits.
- b) If your SDI lies between +/-2.0 to 2.99 SDI then it is a warning alert flag.
- c) If your SDI is +/- 3.0 SDI or more then it is an action alert flag.

Interpretation when an analyte is reported for multiple samples in a Round:

- a) Reported on 2 samples:
  - Two out of two pass - Acceptable performance
  - One out of two pass - Review for random error & take action if appropriate
  - Both failed - Unacceptable performance, Review for systematic error
- b) Reported on 3 samples:
  - All pass - Acceptable performance
  - Two out of three pass - Review for random error & take action if appropriate
  - One out of three pass - Unacceptable performance, Review for systematic error
  - All failed - Unacceptable performance, Review for systematic error





Lab : 1053

Cycle No : 230310

Lab Name : KRSNAA DIAGNOSTICS LTD, RAJPURA

Sample No : 04

Report Date : 19/12/2023

Sample Date : 07/10/2023

**Haematology - CBC, RDW CV%, %**

**Comparative Statistics**

	N	Mean	SD	CV%	Excluded
All Methods	158	26.95	6.65	24.67	22
Calculated - (Your Method)	143	26.58	6.59	24.77	21
Horiba ABX Micros ES 60 - (Your Analyzer)	5	22.30	7.07	31.71	3

**Evaluation Based On - Equipment wise Peer Grouping**

Your Result	27.30	SDI / z-Score	1.70
Assigned Value	21.81	Average SDI	1.41
SDPA	3.229	Uncertainty of AV	0.53
Standard Unit Result Val	27.30	%DEV	22.42

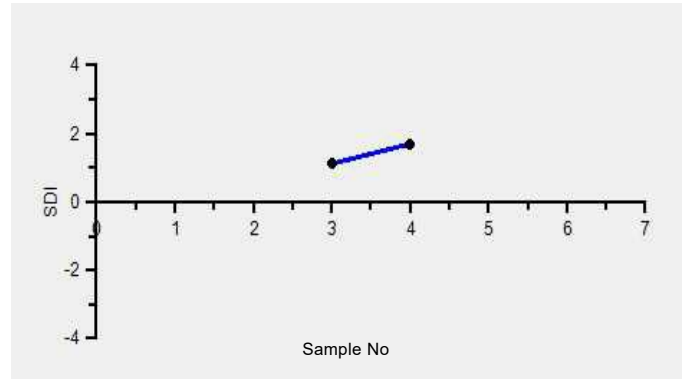
Note : # - Not evaluated / Bimodal distribution

X : SDI more than 4

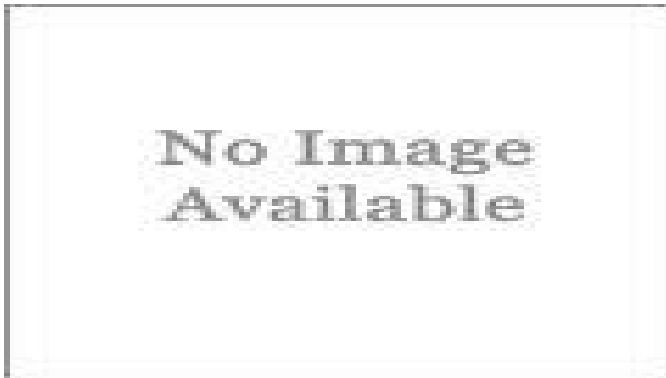
Frequency Histogram



Z-Score Trend - Within Round



Frequency Histogram Your Method



Frequency Histogram Your Analyzer



Lab : 1053

Cycle No : 230310

Lab Name : KRSNAA DIAGNOSTICS LTD, RAJPURA

Sample No : 04

Report Date : 19/12/2023

Sample Date : 07/10/2023

Frequency Histogram Your Method



**Note :** SDI with \* marked are not considered for evaluation

**Comments :**

Haematology - CBC, RDW CV%						
		N	Mean	SD	CV%	Excluded
	All Analyzer	158	26.95	6.65	24.67	22
<b>Your Analyzer :</b>	<b>Horiba ABX Micros ES 60</b>	<b>5</b>	<b>22.30</b>	<b>7.07</b>	<b>31.71</b>	<b>3</b>
	Horiba Yumizen H550	46	22.46	2.86	12.72	6
	Horiba Yumizen H550	46	22.46	2.86	12.72	6
	Horiba Yumizen H500	18	20.56	2.30	11.18	-
	Horiba Yumizen H500	18	20.56	2.30	11.18	-
	Erba ELite 580	13	31.88	2.24	7.02	1
	Mindray BC-5000	11	35.84	3.80	10.60	1
	Horiba ABX Pentra XL 80	8	22.44	2.14	9.54	-

Remarks: Interpretation of your reports

- If your SDI lies between +/- 2.0 SDI then your results are well within limits.
- If your SDI lies between +/-2.0 to 2.99 SDI then it is a warning alert flag.
- If your SDI is +/- 3.0 SDI or more then it is an action alert flag.

Interpretation when an analyte is reported for multiple samples in a Round:

- Reported on 2 samples:
  - Two out of two pass - Acceptable performance
  - One out of two pass - Review for random error & take action if appropriate
  - Both failed - Unacceptable performance, Review for systematic error
- Reported on 3 samples:
  - All pass - Acceptable performance
  - Two out of three pass - Review for random error & take action if appropriate
  - One out of three pass - Unacceptable performance, Review for systematic error
  - All failed - Unacceptable performance, Review for systematic error



Lab : 1053

Cycle No : 230310

Lab Name : KRSNAA DIAGNOSTICS LTD, RAJPURA

Sample No : 04

Report Date : 19/12/2023

Sample Date : 07/10/2023

**Haematology - CBC, Total Leucocytes (WBC) count, 1000/  $\mu$ L**

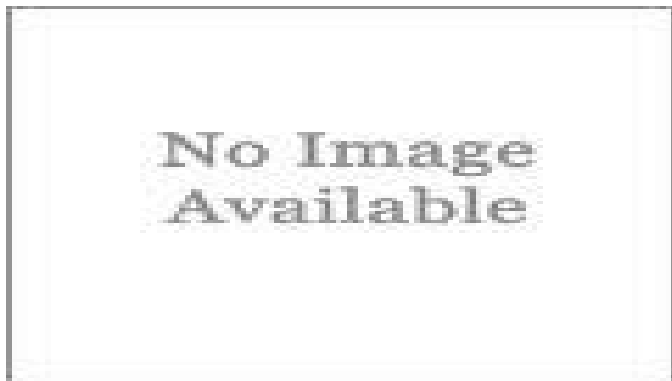
**Comparative Statistics**

	N	Mean	SD	CV%	Excluded
All Methods	169	4,164.24	658.38	15.81	37
Impedance - (Your Method)	145	4,150.00	663.36	15.99	33
Horiba ABX Micros ES 60 - (Your Analyzer)	5	4,400.00	70.71	1.61	--

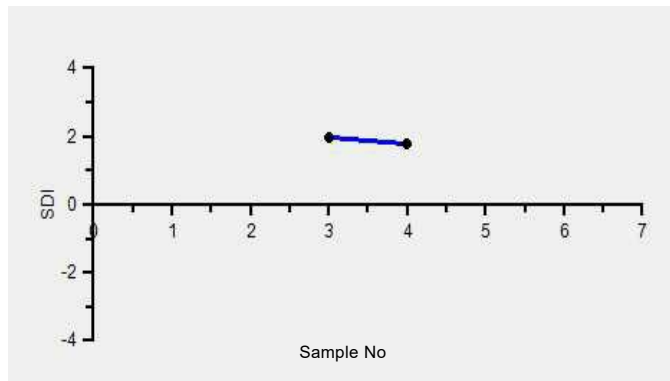
<b>Your Result</b>	4.30	<b>SDI / z-Score</b>	1.78
<b>Assigned Value</b>	3,456.87	<b>Average SDI</b>	1.88
<b>SDPA</b>	473.000	<b>Uncertainty of AV</b>	82.27
<b>Standard Unit Result Val</b>	4,300.00	<b>%DEV</b>	-2.27

Note : # - Not evaluated / Bimodal distribution  
X : SDI more than 4

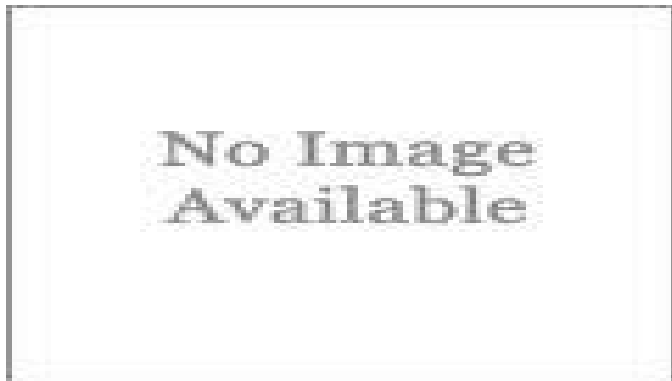
Frequency Histogram



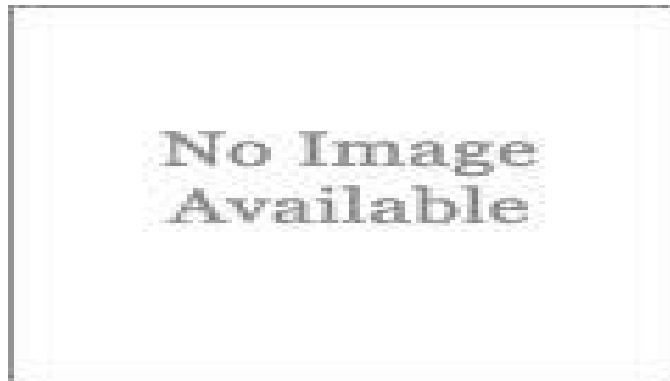
Z-Score Trend - Within Round



Frequency Histogram Your Method



Frequency Histogram Your Analyzer



Lab : 1053

Cycle No : 230310

Lab Name : KRSNAA DIAGNOSTICS LTD, RAJPURA

Sample No : 04

Report Date : 19/12/2023

Sample Date : 07/10/2023

Frequency Histogram Your Method



**Note :** SDI with \* marked are not considered for evaluation

**Comments :**

Haematology - CBC, Total Leucocytes (WBC) count						
		N	Mean	SD	CV%	Excluded
	All Analyzer	169	4,164.24	658.38	15.81	37
<b>Your Analyzer :</b>	<b>Horiba ABX Micros ES 60</b>	<b>5</b>	<b>4,400.00</b>	<b>70.71</b>	<b>1.61</b>	<b>-</b>
	Horiba Yumizen H550	46	3,456.41	469.38	13.58	6
	Horiba Yumizen H550	46	3,456.41	469.38	13.58	6
	Horiba Yumizen H500	18	3,618.46	610.69	16.88	4
	Horiba Yumizen H500	18	3,618.46	610.69	16.88	4
	Erba ELite 580	13	4,745.00	228.72	4.82	5
	Mindray BC-5000	12	4,658.18	110.89	2.38	1
	Horiba ABX Pentra XL 80	9	4,766.67	57.74	1.21	6

Remarks: Interpretation of your reports

- a) If your SDI lies between +/- 2.0 SDI then your results are well within limits.
- b) If your SDI lies between +/-2.0 to 2.99 SDI then it is a warning alert flag.
- c) If your SDI is +/- 3.0 SDI or more then it is an action alert flag.

Interpretation when an analyte is reported for multiple samples in a Round:

- a) Reported on 2 samples:
  - Two out of two pass - Acceptable performance
  - One out of two pass - Review for random error & take action if appropriate
  - Both failed - Unacceptable performance, Review for systematic error
- b) Reported on 3 samples:
  - All pass - Acceptable performance
  - Two out of three pass - Review for random error & take action if appropriate
  - One out of three pass - Unacceptable performance, Review for systematic error
  - All failed - Unacceptable performance, Review for systematic error

*Dr Puneet Kumar Nigam*

**Dr Puneet Kumar Nigam**  
**PT coordinator & Technical Manager, MHL EQAS**  
Unit No. 409-416.  
Commercial Building - 1A  
Kohinoor Mall, Kiro Road, Kurla (W),  
Mumbai - 400070

This is a computer generated report hence signature is not required



PC-1022

Lab : 1053

Lab Name : KRSNAA DIAGNOSTICS LTD, RAJPURA

Report Date : 19/12/2023

Cycle No : 230310

Sample No : 02

Sample Date : 07/10/2023

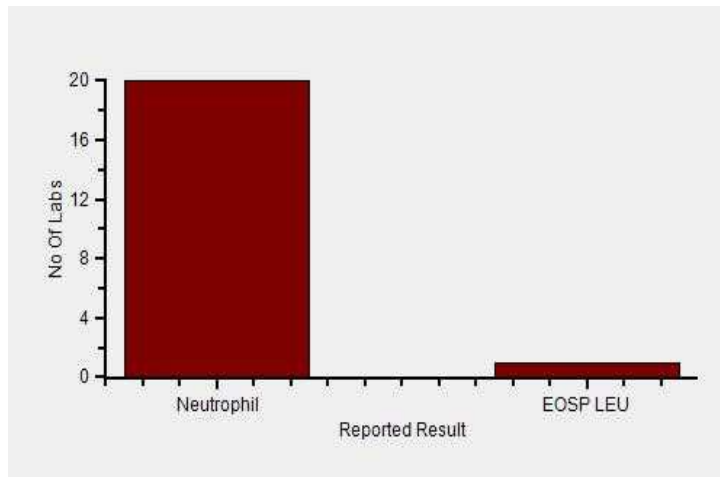
**Haematology - Peripheral smear diagnosis, Diagnosis (Slide), -**

■ All Methods	N
■ -- (Your Method)	33
■ -- (Your Analyzer)	33

<b>Your Result</b>	Neutrophilic Leucocytosis
<b>Result Expected</b>	#

**Note :** # is an indication that this parameter has not been evaluated

Frequency Histogram



Lab : 1053

Lab Name : KRSNAA DIAGNOSTICS LTD, RAJPURA

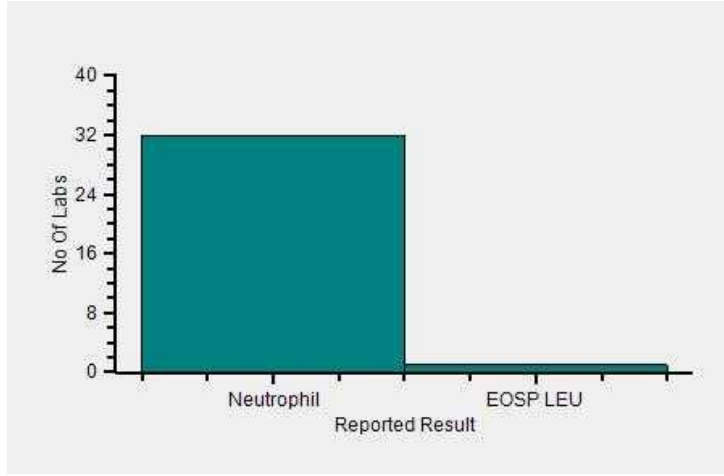
Report Date : 19/12/2023

Cycle No : 230310

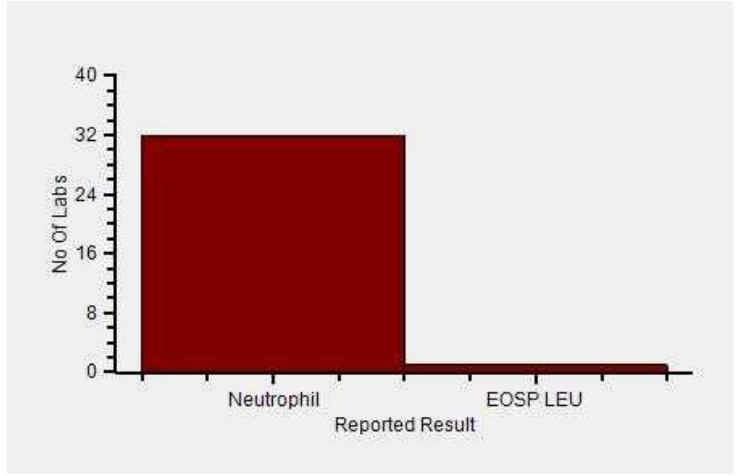
Sample No : 02

Sample Date : 07/10/2023

Frequency Histogram Your Method



Frequency Histogram Your Analyzer



**Reported Results Legends :-**

- Nor** : Normal
- Abn** : Abnormal
- CLL/ CLD** : CLL/Chronic lymphoproliferative disorder
- MA** : Microcytic hypochromic anaemia
- Eos** : Eosinophilia
- PV** : P. vivax
- Leu** : Leucopenia
- DIMANETH** : Dimorphic Anaemia with Thrombocytopenia
- EOSP LEU** : Eosinophilic leucocytosis
- LEUWTHRO** : Leucopenia with Thrombocytopenia

**Comments :**

Interpretation when an analyte is reported for multiple samples in a Round:

- a) Reported on 2 samples:
  - Two out of two pass - Acceptable performance
  - One out of two pass - Review for random error & take action if appropriate
  - Both failed - Unacceptable performance, Review for systematic error
- b) Reported on 3 samples:
  - All pass - Acceptable performance
  - Two out of three pass - Review for random error & take action if appropriate
  - One out of three pass - Unacceptable performance, Review for systematic error
  - All failed - Unacceptable performance, Review for systematic error

*Dr Puneet Kumar Nigam*

**Dr Puneet Kumar Nigam**  
**PT coordinator & Technical Manager, MHL EQAS**  
Unit No. 409-416.  
Commercial Building - 1A  
Kohinoor Mall, Kirool Road, Kurla (W),  
Mumbai - 400070

This is a computer generated report hence signature is not required



PC-1022

Lab : 1053

Cycle No : 230310

Lab Name : KRSNAA DIAGNOSTICS LTD, RAJPURA

Sample No : 02

Report Date : 19/12/2023

Sample Date : 07/10/2023

**Haematology-PS Slide Count Qualitative, Eosinophil., -**

■ All Methods

■ Microscopy - (Your Method)

■ - - (Your Analyzer)

**N**

63

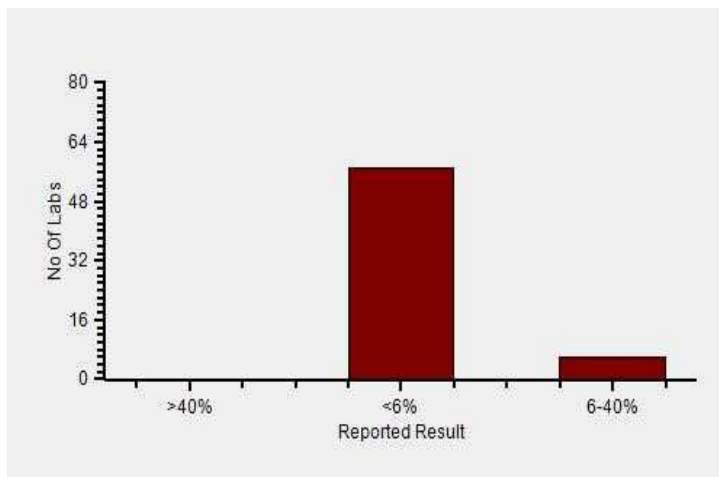
63

63

<b>Your Result</b>	<6%
<b>Result Expected</b>	<6%

**Note :** # is an indication that this parameter has not been evaluated

Frequency Histogram



Lab : 1053

Cycle No : 230310

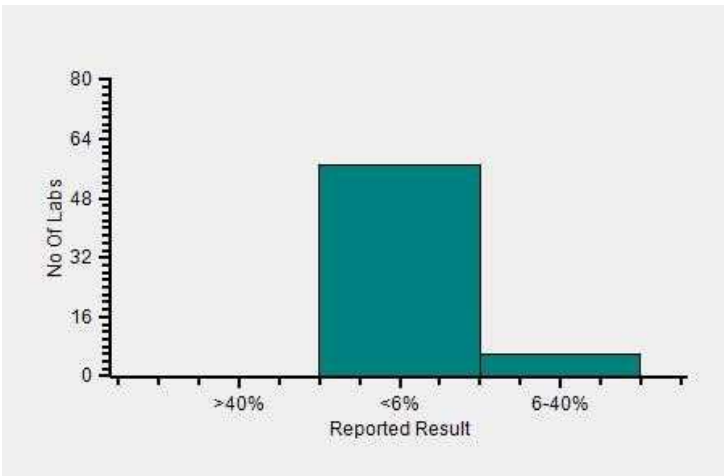
Lab Name : KRSNAA DIAGNOSTICS LTD, RAJPURA

Sample No : 02

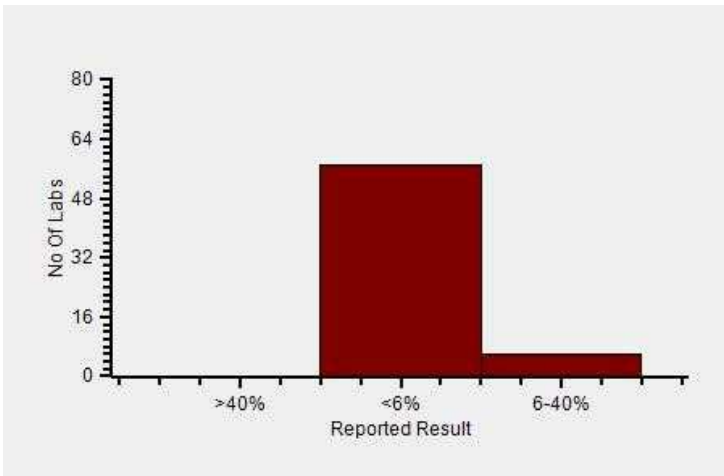
Report Date : 19/12/2023

Sample Date : 07/10/2023

Frequency Histogram Your Method



Frequency Histogram Your Analyzer



**Reported Results Legends :-**

>40%	: >40%
<10%	: <10%
<6%	: <6%
<1%	: <1%
6-40%	: 6-40%
1-6%	: 1-6%
>6%	: >6%

**Comments :**

Interpretation when an analyte is reported for multiple samples in a Round:

a) Reported on 2 samples:

- Two out of two pass - Acceptable performance
- One out of two pass - Review for random error & take action if appropriate
- Both failed - Unacceptable performance, Review for systematic error

b) Reported on 3 samples:

- All pass - Acceptable performance
- Two out of three pass - Review for random error & take action if appropriate
- One out of three pass - Unacceptable performance, Review for systematic error
- All failed - Unacceptable performance, Review for systematic error





Lab : 1053

Lab Name : KRSNAA DIAGNOSTICS LTD, RAJPURA

Report Date : 19/12/2023

Cycle No : 230310

Sample No : 02

Sample Date : 07/10/2023

Haematology-PS Slide Count Qualitative, Lymphocyte., -

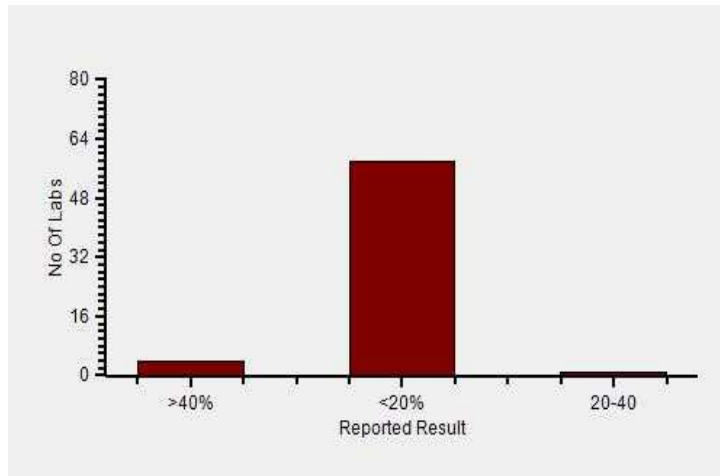
- All Methods
- Microscopy - (Your Method)
- - - (Your Analyzer)

**N**  
63  
63  
63

<b>Your Result</b>	<20%
<b>Result Expected</b>	<20%

**Note :** # is an indication that this parameter has not been evaluated

Frequency Histogram



Lab : 1053

Cycle No : 230310

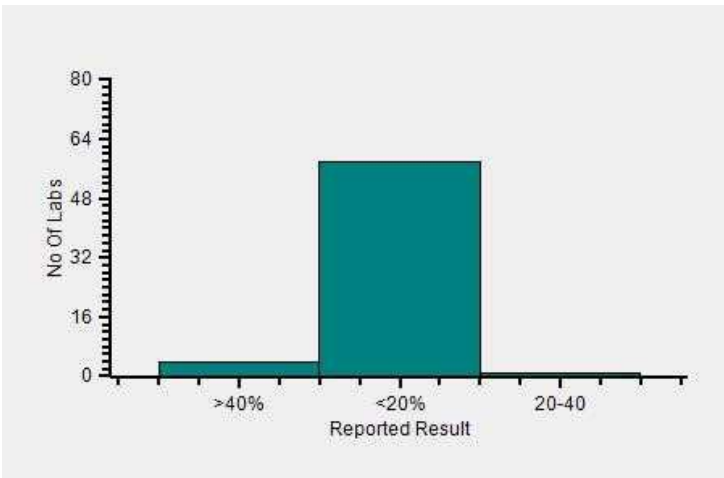
Lab Name : KRSNAA DIAGNOSTICS LTD, RAJPURA

Sample No : 02

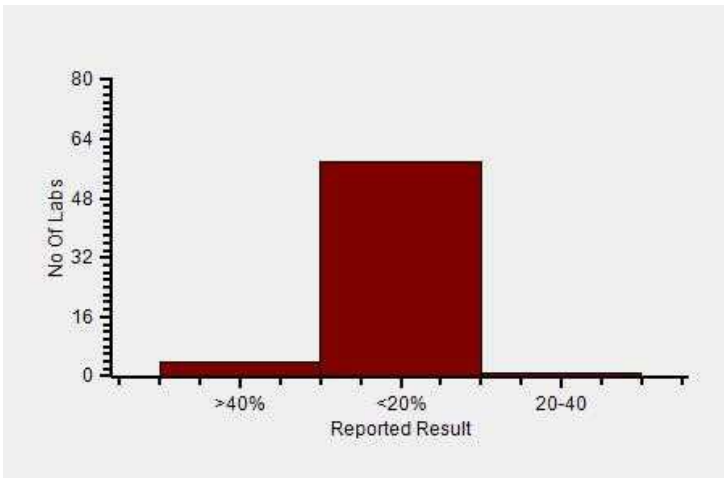
Report Date : 19/12/2023

Sample Date : 07/10/2023

Frequency Histogram Your Method



Frequency Histogram Your Analyzer



**Reported Results Legends :-**

>40%	: >40%
<20%	: <20%
20-30%	: 20-30%
>25%	: >25%
20-40	: 20-40%
<25%	: <25%
25-50%	: 25-50%

**Comments :**

Interpretation when an analyte is reported for multiple samples in a Round:

a) Reported on 2 samples:

- Two out of two pass - Acceptable performance
- One out of two pass - Review for random error & take action if appropriate
- Both failed - Unacceptable performance, Review for systematic error

b) Reported on 3 samples:

- All pass - Acceptable performance
- Two out of three pass - Review for random error & take action if appropriate
- One out of three pass - Unacceptable performance, Review for systematic error
- All failed - Unacceptable performance, Review for systematic error



Lab : 1053

Lab Name : KRSNAA DIAGNOSTICS LTD, RAJPURA

Report Date : 19/12/2023

Cycle No : 230310

Sample No : 02

Sample Date : 07/10/2023

**Haematology-PS Slide Count Qualitative, Neutrophil., -**

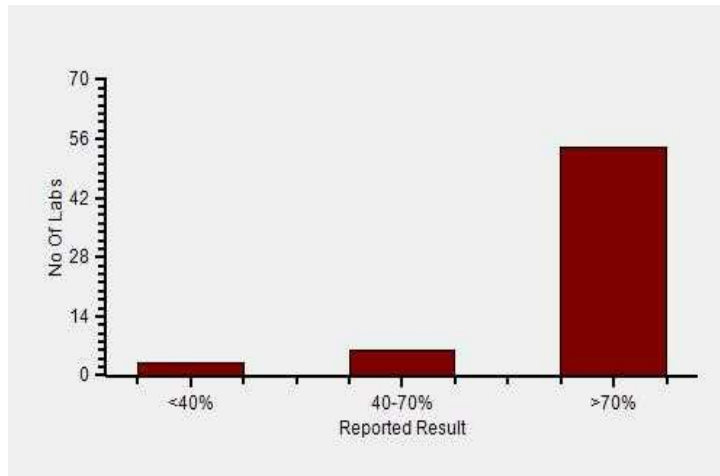
- All Methods
- Microscopy - (Your Method)
- - - (Your Analyzer)

**N**  
63  
63  
63

<b>Your Result</b>	>70%
<b>Result Expected</b>	>70%

**Note :** # is an indication that this parameter has not been evaluated

Frequency Histogram



Lab : 1053

Cycle No : 230310

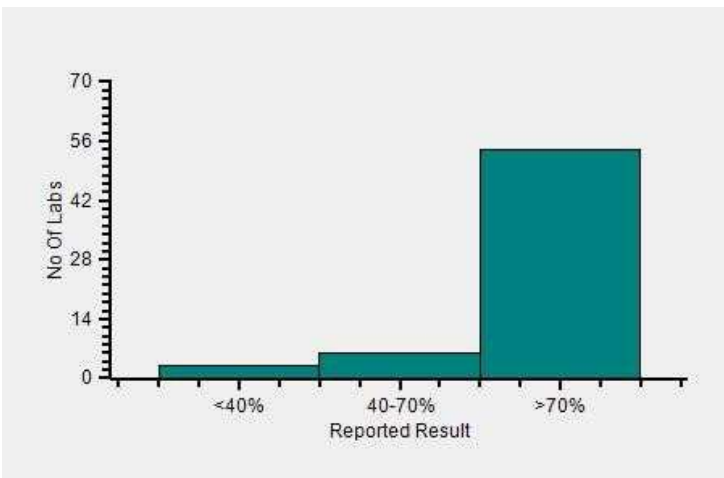
Lab Name : KRSNAA DIAGNOSTICS LTD, RAJPURA

Sample No : 02

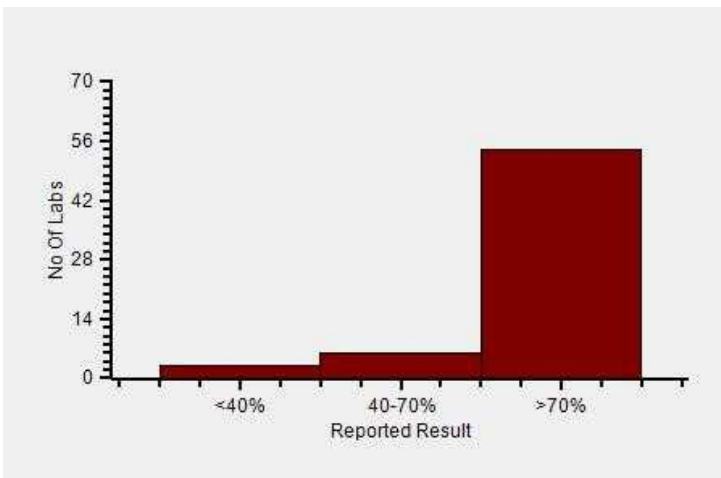
Report Date : 19/12/2023

Sample Date : 07/10/2023

Frequency Histogram Your Method



Frequency Histogram Your Analyzer



**Reported Results Legends :-**

<b>60-80%</b>	: 60-80%
<b>&lt;40%</b>	: <40%
<b>40-70%</b>	: 40-70%
<b>&gt;70%</b>	: >70%

**Comments :**

Interpretation when an analyte is reported for multiple samples in a Round:

a) Reported on 2 samples:

- Two out of two pass - Acceptable performance
- One out of two pass - Review for random error & take action if appropriate
- Both failed - Unacceptable performance, Review for systematic error

b) Reported on 3 samples:

- All pass - Acceptable performance
- Two out of three pass - Review for random error & take action if appropriate
- One out of three pass - Unacceptable performance, Review for systematic error
- All failed - Unacceptable performance, Review for systematic error

*Dr Puneet Kumar Nigam*

**Dr Puneet Kumar Nigam**  
**PT coordinator & Technical Manager, MHL EQAS**

Unit No. 409-416.

Commercial Building - 1A  
Kohinoor Mall, Kirool Road, Kurla (W),  
Mumbai - 400070

This is a computer generated report hence signature is not required



PC-1022