

Lab : 1042

Cycle No : 230412

Lab Name : KRSNAA DIAGNOSTICS LTD, TARNTARAN

Sample No : 03

Report Date : 13/02/2024

Sample Date : 23/12/2023

Haematology - CBC, Erythrocyte (RBC) Count, mill/cu.mm

Comparative Statistics

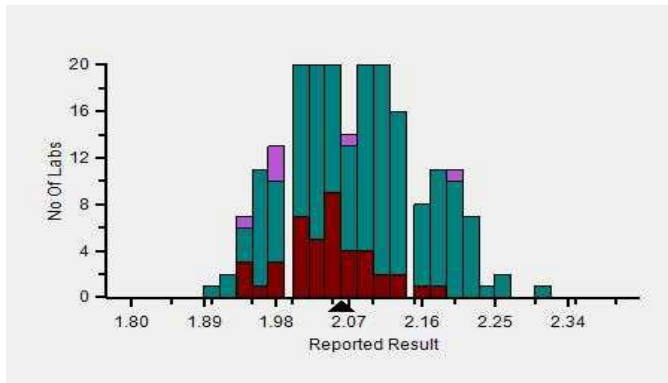
	N	Mean	SD	CV%	Excluded
All Methods	222	2.07	0.09	4.11	8
Impedance - (Your Method)	218	2.07	0.09	4.11	7
Horiba Yumizen H550 - (Your Analyzer)	44	2.03	0.07	3.55	1

Evaluation Based On - Equipment wise Peer Grouping

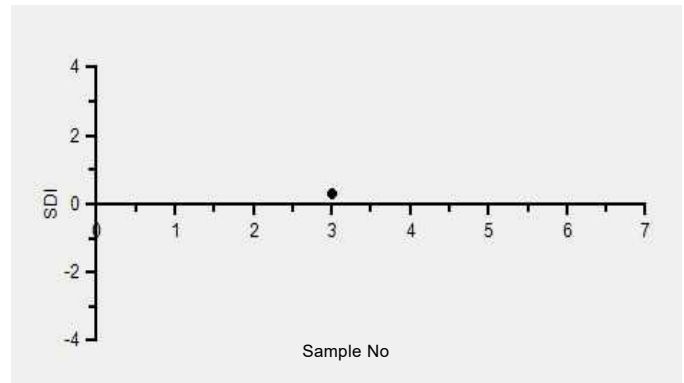
Your Result	2.06	SDI / z-Score	0.32
Assigned Value	2.03	Average SDI	-2.82
SDPA	0.099	Uncertainty of AV	0.01
Standard Unit Result Val	2.06	%DEV	1.43

Note : # - Not evaluated / Bimodal distribution
X : SDI more than 4

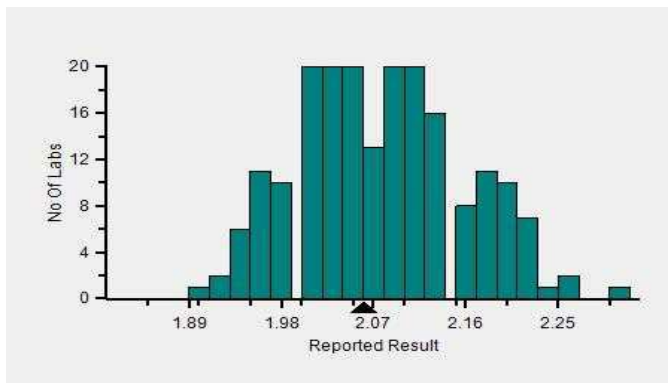
Frequency Histogram



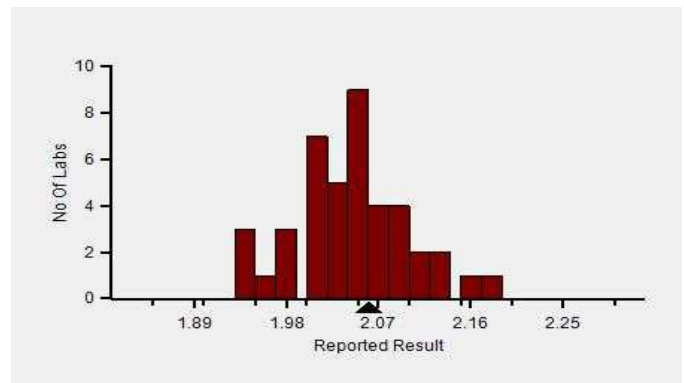
Z-Score Trend - Within Round



Frequency Histogram Your Method



Frequency Histogram Your Analyzer



Lab : 1042

Cycle No : 230412

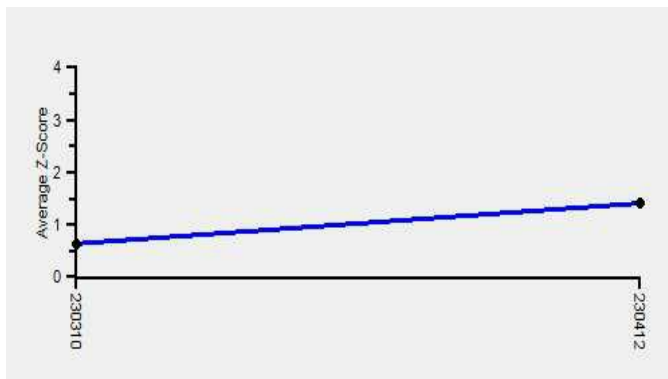
Lab Name : KRSNAA DIAGNOSTICS LTD, TARNTARAN

Sample No : 03

Report Date : 13/02/2024

Sample Date : 23/12/2023

Frequency Histogram Your Method



Note : SDI with * marked are not considered for evaluation

Comments :

Haematology - CBC, Erythrocyte (RBC) Count						
		N	Mean	SD	CV%	Excluded
	All Analyzer	222	2.07	0.09	4.11	8
Your Analyzer :	Horiba Yumizen H550	44	2.03	0.07	3.55	1
	Systemx XP-100	24	2.17	0.07	3.10	-
	Horiba Yumizen H500	22	2.01	0.08	4.19	-
	Nihon Kohden Celltac Alpha	21	2.12	0.06	2.83	-
	Erba ELite 580	14	2.04	0.07	3.38	-
	Mindray BC-5000	14	2.03	0.07	3.20	-
	Horiba ABX Micros ES 60	10	2.03	0.07	3.31	-
	Systemx XN-550	9	2.01	0.02	0.85	1

Remarks: Interpretation of your reports

- a) If your SDI lies between +/- 2.0 SDI then your results are well within limits.
- b) If your SDI lies between +/-2.0 to 2.99 SDI then it is a warning alert flag.
- c) If your SDI is +/- 3.0 SDI or more then it is an action alert flag.

Interpretation when an analyte is reported for multiple samples in a Round:

- a) Reported on 2 samples:
 - Two out of two pass - Acceptable performance
 - One out of two pass - Review for random error & take action if appropriate
 - Both failed - Unacceptable performance, Review for systematic error
- b) Reported on 3 samples:
 - All pass - Acceptable performance
 - Two out of three pass - Review for random error & take action if appropriate
 - One out of three pass - Unacceptable performance, Review for systematic error
 - All failed - Unacceptable performance, Review for systematic error



Lab : 1042

Cycle No : 230412

Lab Name : KRSNAA DIAGNOSTICS LTD, TARNTARAN

Sample No : 03

Report Date : 13/02/2024

Sample Date : 23/12/2023

Haematology - CBC, Haemoglobin, g/dL

Comparative Statistics

	N	Mean	SD	CV%	Excluded
All Methods	222	5.85	0.33	5.59	3
Photometric - (Your Method)	58	5.77	0.34	5.97	1
Horiba Yumizen H550 - (Your Analyzer)	44	5.47	0.12	2.27	1

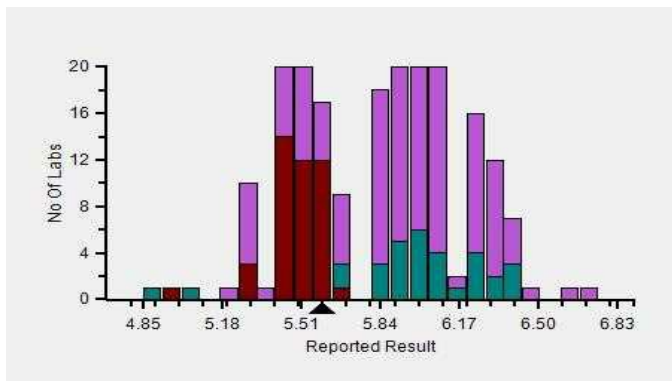
Evaluation Based On - Equipment wise Peer Grouping

Your Result	5.60	SDI / z-Score	0.47
Assigned Value	5.49	Average SDI	-2.87
SDPA	0.240	Uncertainty of AV	0.02
Standard Unit Result Val	5.60	%DEV	2.30

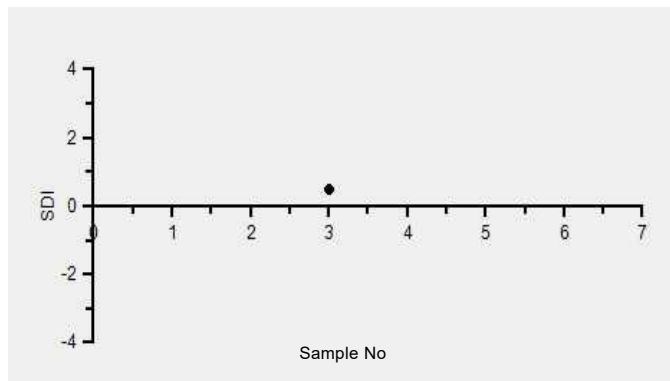
Note : # - Not evaluated / Bimodal distribution

X : SDI more than 4

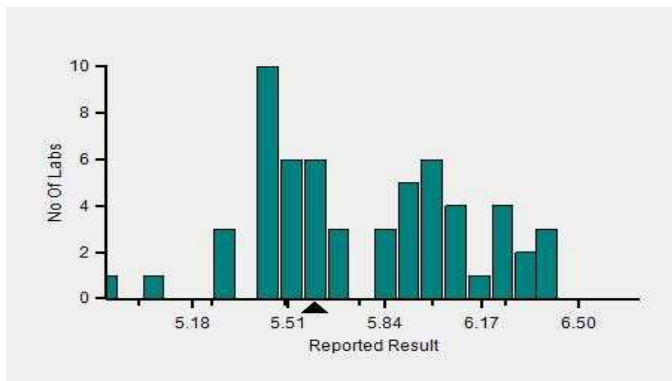
Frequency Histogram



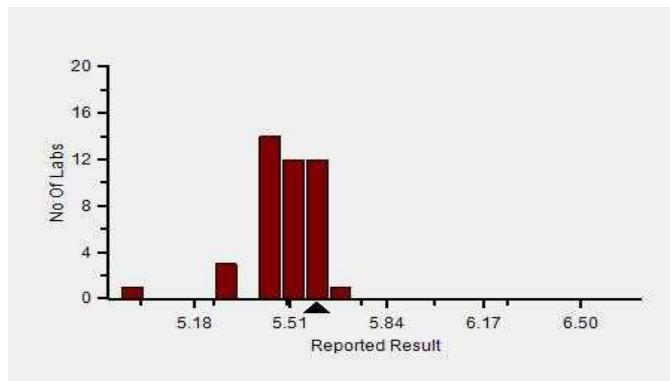
Z-Score Trend - Within Round



Frequency Histogram Your Method



Frequency Histogram Your Analyzer



Lab : 1042

Cycle No : 230412

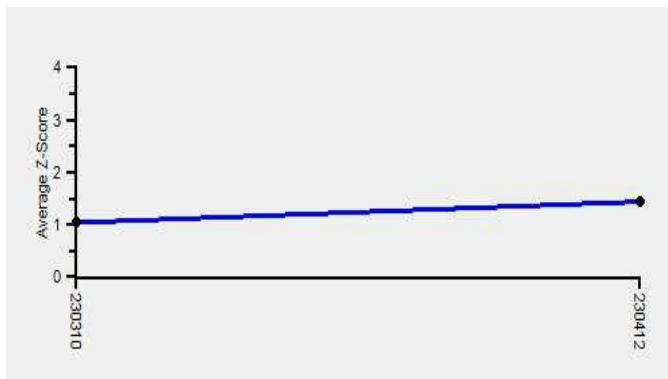
Lab Name : KRSNAA DIAGNOSTICS LTD, TARNTARAN

Sample No : 03

Report Date : 13/02/2024

Sample Date : 23/12/2023

Frequency Histogram Your Method



Note : SDI with * marked are not considered for evaluation

Comments :

Haematology - CBC, Haemoglobin

		N	Mean	SD	CV%	Excluded
	All Analyzer	222	5.85	0.33	5.59	3
Your Analyzer :	Horiba Yumizen H550	44	5.47	0.12	2.27	1
	Sysmex XP-100	25	6.02	0.28	4.70	-
	Horiba Yumizen H500	22	5.47	0.19	3.49	-
	Nihon Kohden Celltac Alpha	21	5.95	0.11	1.92	-
	Erba ELite 580	13	5.95	0.15	2.54	-
	Horiba ABX Micros ES 60	10	5.65	0.19	3.36	-
	Sysmex XN-550	9	6.07	0.07	1.17	-
	Mindray BC-5000	7	6.23	0.18	2.89	-

Remarks: Interpretation of your reports

- a) If your SDI lies between +/- 2.0 SDI then your results are well within limits.
- b) If your SDI lies between +/-2.0 to 2.99 SDI then it is a warning alert flag.
- c) If your SDI is +/- 3.0 SDI or more then it is an action alert flag.

Interpretation when an analyte is reported for multiple samples in a Round:

a) Reported on 2 samples:

- Two out of two pass - Acceptable performance
- One out of two pass - Review for random error & take action if appropriate
- Both failed - Unacceptable performance, Review for systematic error

b) Reported on 3 samples:

- All pass - Acceptable performance
- Two out of three pass - Review for random error & take action if appropriate
- One out of three pass - Unacceptable performance, Review for systematic error
- All failed - Unacceptable performance, Review for systematic error



Lab : 1042

Cycle No : 230412

Lab Name : KRSNAA DIAGNOSTICS LTD, TARNTARAN

Sample No : 03

Report Date : 13/02/2024

Sample Date : 23/12/2023

Haematology - CBC, Hematocrit, %

Comparative Statistics

	N	Mean	SD	CV%	Excluded
All Methods	205	26.14	2.75	10.52	10
Calculated - (Your Method)	135	25.98	2.78	10.68	4
Horiba Yumizen H550 - (Your Analyzer)	42	23.76	1.01	4.27	2

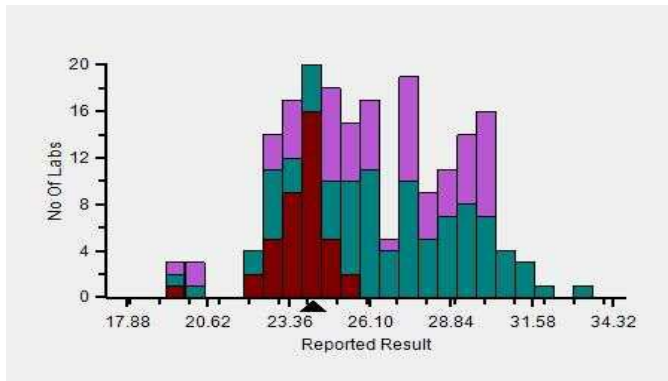
Evaluation Based On - Equipment wise Peer Grouping

Your Result	24.20	SDI / z-Score	0.19
Assigned Value	23.85	Average SDI	-1.80
SDPA	1.820	Uncertainty of AV	0.13
Standard Unit Result Val	24.20	%DEV	1.86

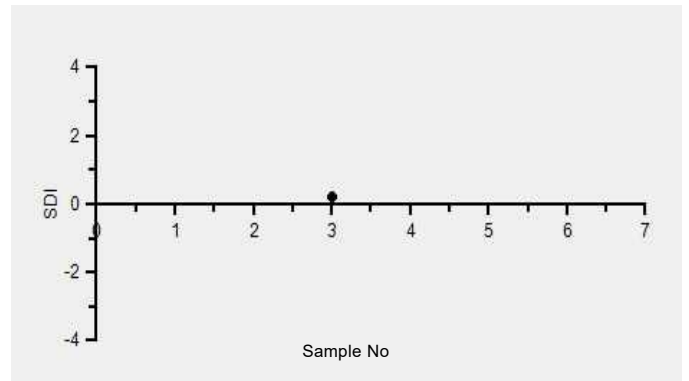
Note : # - Not evaluated / Bimodal distribution

X : SDI more than 4

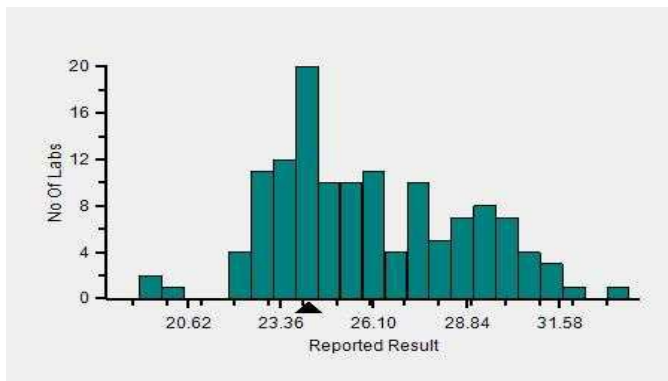
Frequency Histogram



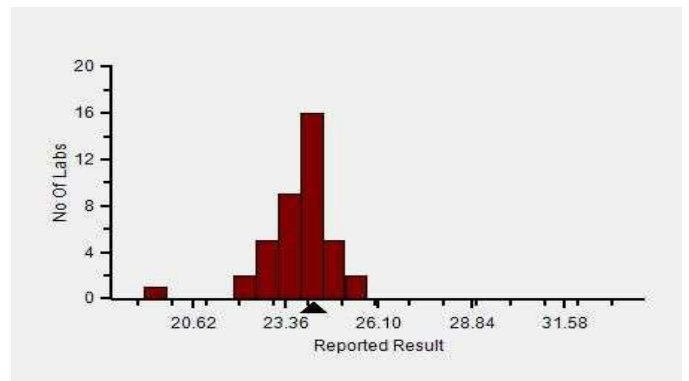
Z-Score Trend - Within Round



Frequency Histogram Your Method



Frequency Histogram Your Analyzer



Lab : 1042

Cycle No : 230412

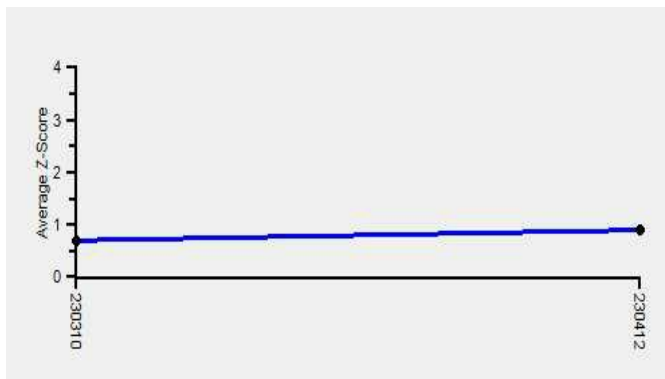
Lab Name : KRSNAA DIAGNOSTICS LTD, TARNTARAN

Sample No : 03

Report Date : 13/02/2024

Sample Date : 23/12/2023

Frequency Histogram Your Method



Note : SDI with * marked are not considered for evaluation

Comments :

Haematology - CBC, Hematocrit		N	Mean	SD	CV%	Excluded
	All Analyzer	205	26.14	2.75	10.52	10
Your Analyzer :	Horiba Yumizen H550	42	23.76	1.01	4.27	2
	Systemx XP-100	23	24.71	1.47	5.96	2
	Horiba Yumizen H500	22	23.65	1.15	4.87	-
	Nihon Kohden Celltac Alpha	20	28.64	2.18	7.62	-
	Mindray BC-5000	14	29.52	1.11	3.77	-
	Erba ELite 580	13	27.81	1.02	3.68	-
	Horiba ABX Micros ES 60	8	23.06	1.44	6.23	1
	Systemx XN-550	8	26.29	0.55	2.08	-

Remarks: Interpretation of your reports

- a) If your SDI lies between +/- 2.0 SDI then your results are well within limits.
- b) If your SDI lies between +/-2.0 to 2.99 SDI then it is a warning alert flag.
- c) If your SDI is +/- 3.0 SDI or more then it is an action alert flag.

Interpretation when an analyte is reported for multiple samples in a Round:

- a) Reported on 2 samples:
 - Two out of two pass - Acceptable performance
 - One out of two pass - Review for random error & take action if appropriate
 - Both failed - Unacceptable performance, Review for systematic error
- b) Reported on 3 samples:
 - All pass - Acceptable performance
 - Two out of three pass - Review for random error & take action if appropriate
 - One out of three pass - Unacceptable performance, Review for systematic error
 - All failed - Unacceptable performance, Review for systematic error



Lab : 1042

Cycle No : 230412

Lab Name : KRSNAA DIAGNOSTICS LTD, TARNTARAN

Sample No : 03

Report Date : 13/02/2024

Sample Date : 23/12/2023

Haematology - CBC, MCH (Mean Corpuscular Hb), pg

Comparative Statistics

	N	Mean	SD	CV%	Excluded
All Methods	220	28.29	1.64	5.79	4
Calculated - (Your Method)	152	28.33	1.70	5.99	4
Horiba Yumizen H550 - (Your Analyzer)	43	26.96	0.95	3.52	--

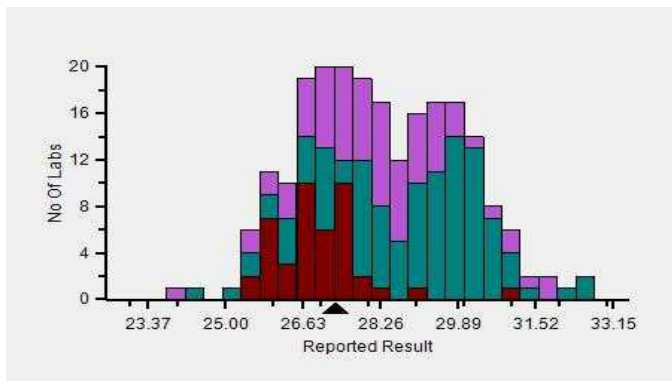
Evaluation Based On - Equipment wise Peer Grouping

Your Result	27.30	SDI / z-Score	0.22
Assigned Value	26.99	Average SDI	0.12
SDPA	1.380	Uncertainty of AV	0.12
Standard Unit Result Val	27.30	%DEV	1.28

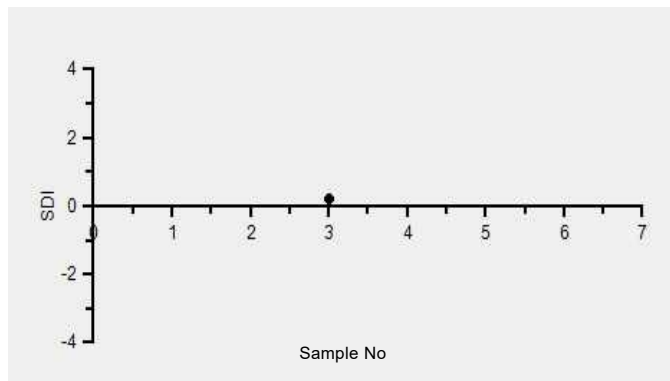
Note : # - Not evaluated / Bimodal distribution

X : SDI more than 4

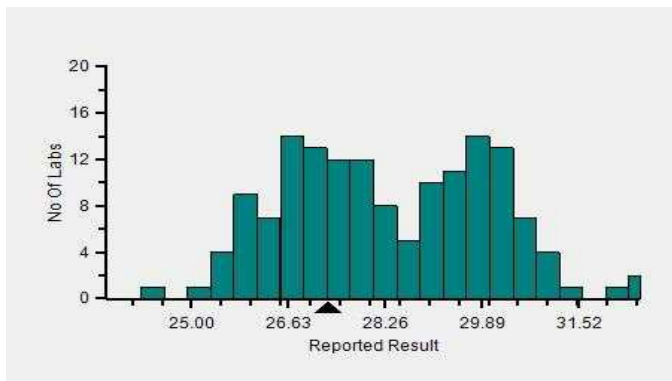
Frequency Histogram



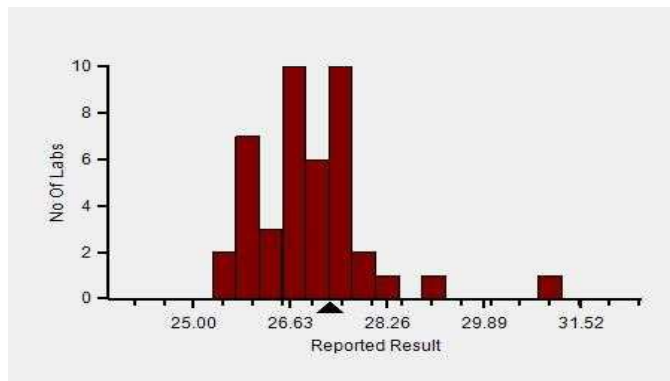
Z-Score Trend - Within Round



Frequency Histogram Your Method



Frequency Histogram Your Analyzer



Lab : 1042

Cycle No : 230412

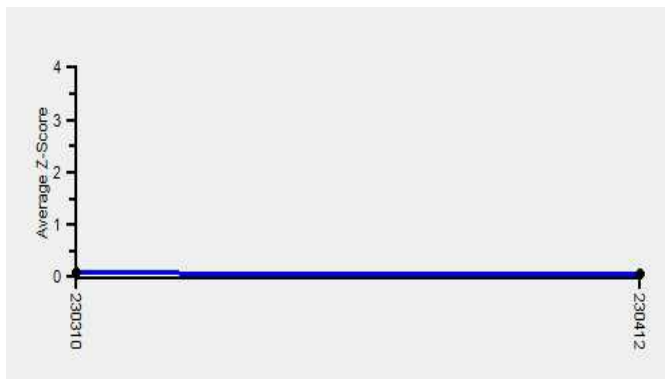
Lab Name : KRSNAA DIAGNOSTICS LTD, TARNTARAN

Sample No : 03

Report Date : 13/02/2024

Sample Date : 23/12/2023

Frequency Histogram Your Method



Note : SDI with * marked are not considered for evaluation

Comments :

Haematology - CBC, MCH (Mean Corpuscular Hb)						
		N	Mean	SD	CV%	Excluded
	All Analyzer	220	28.29	1.64	5.79	4
Your Analyzer :	Horiba Yumizen H550	43	26.96	0.95	3.52	-
	Sysmex XP-100	25	27.81	1.22	4.37	-
	Horiba Yumizen H500	23	27.21	1.07	3.95	-
	Nihon Kohden Celltac Alpha	20	28.17	0.94	3.32	-
	Mindray BC-5000	14	30.54	0.84	2.73	-
	Erba ELite 580	13	29.35	0.43	1.46	-
	Horiba ABX Micros ES 60	10	28.05	1.35	4.82	-
	Sysmex XN-550	9	30.17	0.50	1.64	-

Remarks: Interpretation of your reports

- a) If your SDI lies between +/- 2.0 SDI then your results are well within limits.
- b) If your SDI lies between +/-2.0 to 2.99 SDI then it is a warning alert flag.
- c) If your SDI is +/- 3.0 SDI or more then it is an action alert flag.

Interpretation when an analyte is reported for multiple samples in a Round:

- a) Reported on 2 samples:
 - Two out of two pass - Acceptable performance
 - One out of two pass - Review for random error & take action if appropriate
 - Both failed - Unacceptable performance, Review for systematic error
- b) Reported on 3 samples:
 - All pass - Acceptable performance
 - Two out of three pass - Review for random error & take action if appropriate
 - One out of three pass - Unacceptable performance, Review for systematic error
 - All failed - Unacceptable performance, Review for systematic error



Lab : 1042

Cycle No : 230412

Lab Name : KRSNAA DIAGNOSTICS LTD, TARNTARAN

Sample No : 03

Report Date : 13/02/2024

Sample Date : 23/12/2023

Haematology - CBC, MCHC (Mean Corpuscular Hb Concentration), g/dL

Comparative Statistics

	N	Mean	SD	CV%	Excluded
All Methods	220	22.50	1.92	8.52	11
Calculated - (Your Method)	150	22.48	1.65	7.34	9
Horiba Yumizen H550 - (Your Analyzer)	42	23.00	1.21	5.27	1

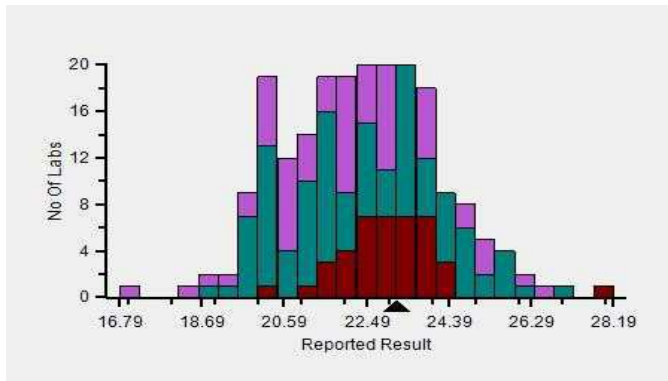
Evaluation Based On - Equipment wise Peer Grouping

Your Result	23.20	SDI / z-Score	0.06
Assigned Value	23.10	Average SDI	0.11
SDPA	1.670	Uncertainty of AV	0.13
Standard Unit Result Val	23.20	%DEV	0.88

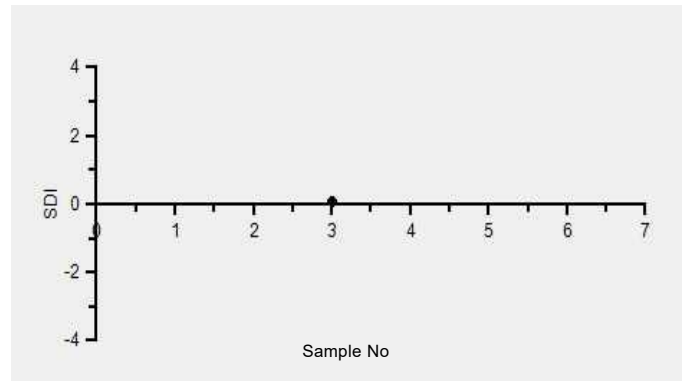
Note : # - Not evaluated / Bimodal distribution

X : SDI more than 4

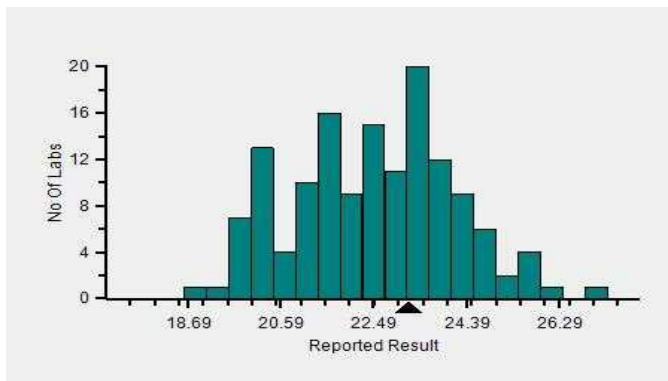
Frequency Histogram



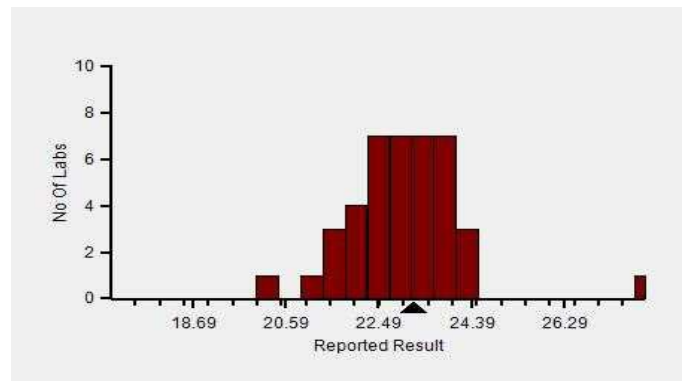
Z-Score Trend - Within Round



Frequency Histogram Your Method



Frequency Histogram Your Analyzer



Lab : 1042

Lab Name : KRSNAA DIAGNOSTICS LTD, TARNTARAN

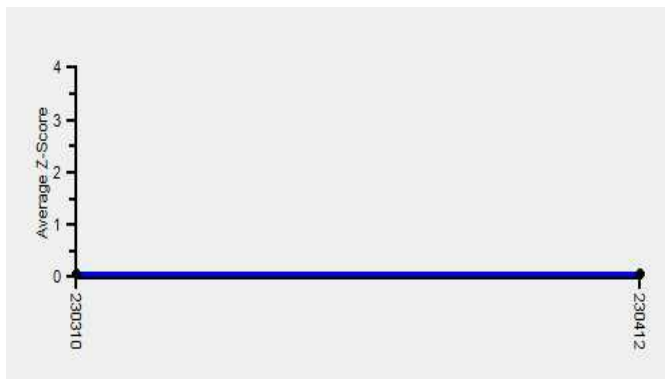
Report Date : 13/02/2024

Cycle No : 230412

Sample No : 03

Sample Date : 23/12/2023

Frequency Histogram Your Method



Note : SDI with * marked are not considered for evaluation

Comments :

Haematology - CBC, MCHC (Mean Corpuscular Hb Concentration)

	N	Mean	SD	CV%	Excluded
All Analyzer	220	22.50	1.92	8.52	11
Your Analyzer : Horiba Yumizen H550	42	23.00	1.21	5.27	1
Sysmex XP-100	25	24.44	1.59	6.50	1
Horiba Yumizen H500	24	23.10	1.09	4.72	-
Nihon Kohden Celltac Alpha	20	20.57	0.97	4.70	1
Mindray BC-5000	14	20.98	0.99	4.73	-
Erba ELite 580	13	21.45	0.50	2.33	-
Horiba ABX Micros ES 60	10	23.99	0.76	3.19	1
Sysmex XN-550	9	22.79	1.12	4.92	-

Remarks: Interpretation of your reports

- a) If your SDI lies between +/- 2.0 SDI then your results are well within limits.
- b) If your SDI lies between +/-2.0 to 2.99 SDI then it is a warning alert flag.
- c) If your SDI is +/- 3.0 SDI or more then it is an action alert flag.

Interpretation when an analyte is reported for multiple samples in a Round:

- a) Reported on 2 samples:
 - Two out of two pass - Acceptable performance
 - One out of two pass - Review for random error & take action if appropriate
 - Both failed - Unacceptable performance, Review for systematic error
- b) Reported on 3 samples:
 - All pass - Acceptable performance
 - Two out of three pass - Review for random error & take action if appropriate
 - One out of three pass - Unacceptable performance, Review for systematic error
 - All failed - Unacceptable performance, Review for systematic error



Lab : 1042

Cycle No : 230412

Lab Name : KRSNAA DIAGNOSTICS LTD, TARNTARAN

Sample No : 03

Report Date : 13/02/2024

Sample Date : 23/12/2023

Haematology - CBC, MCV (Mean Corpuscular Volume), fL

Comparative Statistics

	N	Mean	SD	CV%	Excluded
All Methods	221	125.77	13.25	10.54	3
Calculated - (Your Method)	132	125.63	12.41	9.88	2
Horiba Yumizen H550 - (Your Analyzer)	43	117.12	4.60	3.93	1

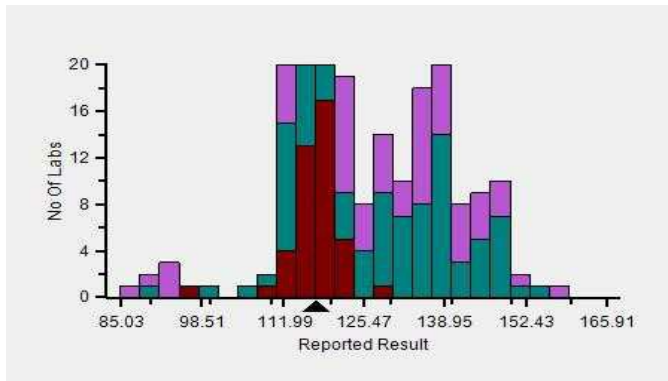
Evaluation Based On - Equipment wise Peer Grouping

Your Result	117.60	SDI / z-Score	0.00
Assigned Value	117.58	Average SDI	-0.13
SDPA	8.600	Uncertainty of AV	0.50
Standard Unit Result Val	117.60	%DEV	0.41

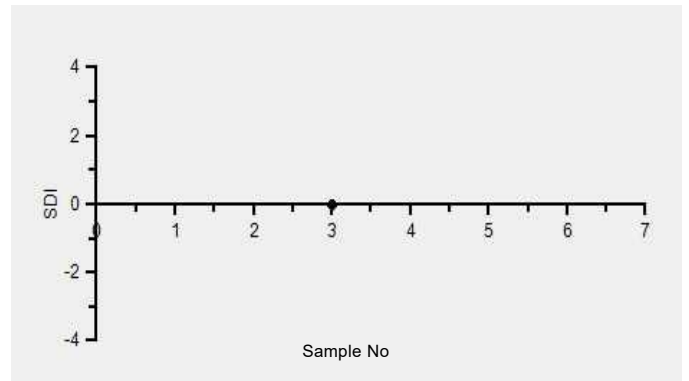
Note : # - Not evaluated / Bimodal distribution

X : SDI more than 4

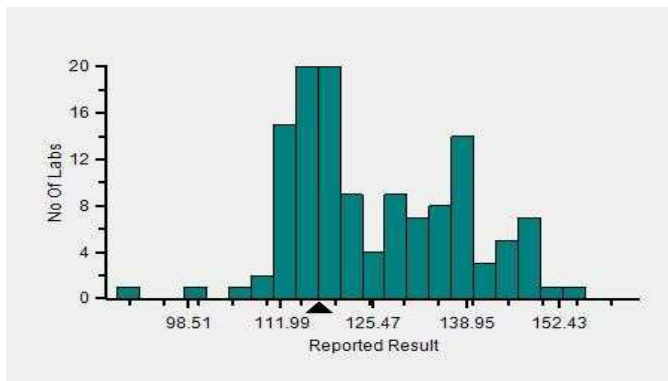
Frequency Histogram



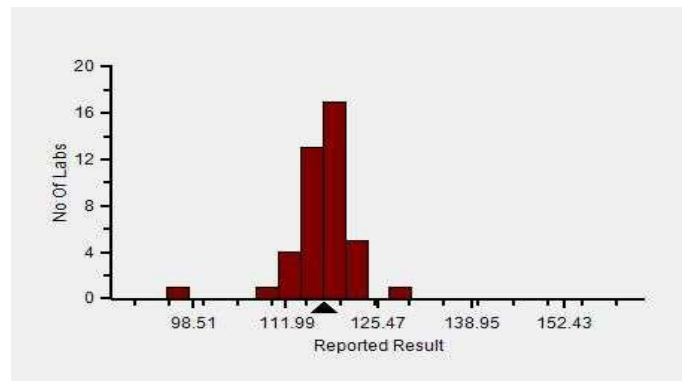
Z-Score Trend - Within Round



Frequency Histogram Your Method



Frequency Histogram Your Analyzer



Lab : 1042

Cycle No : 230412

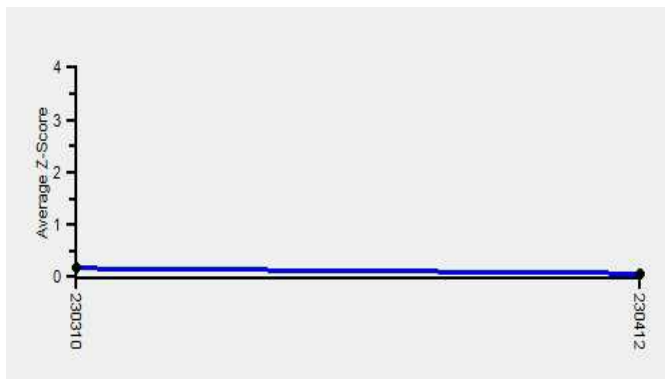
Lab Name : KRSNAA DIAGNOSTICS LTD, TARNTARAN

Sample No : 03

Report Date : 13/02/2024

Sample Date : 23/12/2023

Frequency Histogram Your Method



Note : SDI with * marked are not considered for evaluation

Comments :

Haematology - CBC, MCV (Mean Corpuscular Volume)						
		N	Mean	SD	CV%	Excluded
	All Analyzer	221	125.77	13.25	10.54	3
Your Analyzer :	Horiba Yumizen H550	43	117.12	4.60	3.93	1
	Sysmex XP-100	25	112.33	7.02	6.25	-
	Horiba Yumizen H500	23	117.78	3.13	2.66	-
	Nihon Kohden Celltac Alpha	20	135.54	9.13	6.74	-
	Mindray BC-5000	14	145.71	5.09	3.49	-
	Erba ELite 580	13	136.92	2.04	1.49	-
	Horiba ABX Micros ES 60	10	117.78	4.06	3.44	1
	Sysmex XN-550	9	130.87	2.89	2.21	-

Remarks: Interpretation of your reports

- a) If your SDI lies between +/- 2.0 SDI then your results are well within limits.
- b) If your SDI lies between +/-2.0 to 2.99 SDI then it is a warning alert flag.
- c) If your SDI is +/- 3.0 SDI or more then it is an action alert flag.

Interpretation when an analyte is reported for multiple samples in a Round:

- a) Reported on 2 samples:
 - Two out of two pass - Acceptable performance
 - One out of two pass - Review for random error & take action if appropriate
 - Both failed - Unacceptable performance, Review for systematic error
- b) Reported on 3 samples:
 - All pass - Acceptable performance
 - Two out of three pass - Review for random error & take action if appropriate
 - One out of three pass - Unacceptable performance, Review for systematic error
 - All failed - Unacceptable performance, Review for systematic error



Lab : 1042

Cycle No : 230412

Lab Name : KRSNAA DIAGNOSTICS LTD, TARNTARAN

Sample No : 03

Report Date : 13/02/2024

Sample Date : 23/12/2023

Haematology - CBC, Platelet Count, 1000/ μ L

Comparative Statistics

	N	Mean	SD	CV%	Excluded
All Methods	221	116.06	16.69	14.38	18
Impedance - (Your Method)	212	116.74	16.42	14.06	15
Horiba Yumizen H550 - (Your Analyzer)	44	130.07	17.99	13.83	2

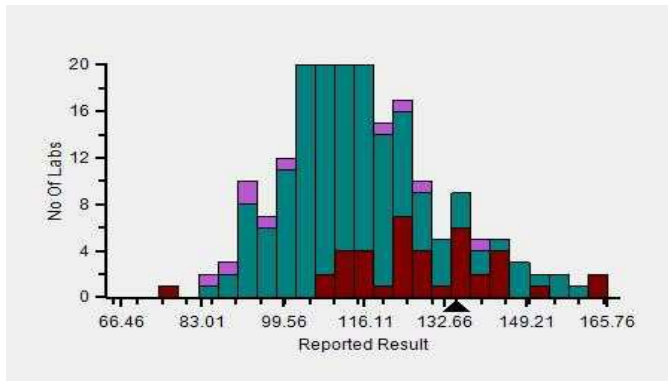
Evaluation Based On - Equipment wise Peer Grouping

Your Result	135.00	SDI / z-Score	0.75
Assigned Value	123.18	Average SDI	-1.47
SDPA	15.679	Uncertainty of AV	2.43
Standard Unit Result Val	135.00	%DEV	3.79

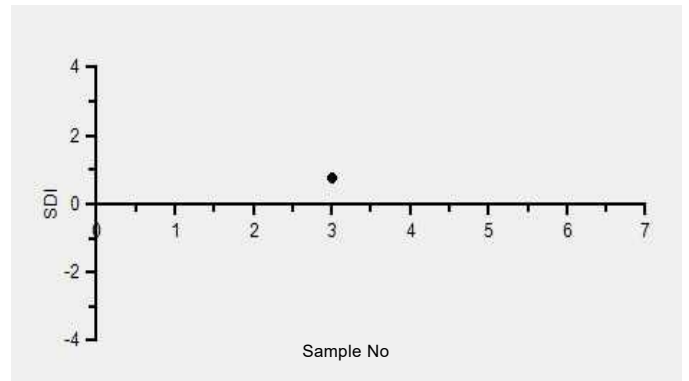
Note : # - Not evaluated / Bimodal distribution

X : SDI more than 4

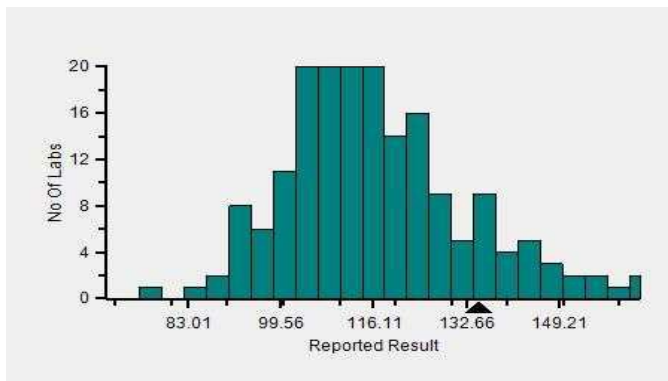
Frequency Histogram



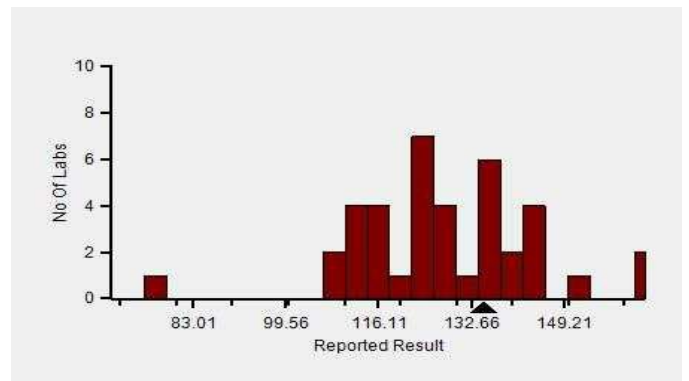
Z-Score Trend - Within Round



Frequency Histogram Your Method



Frequency Histogram Your Analyzer



Lab : 1042

Cycle No : 230412

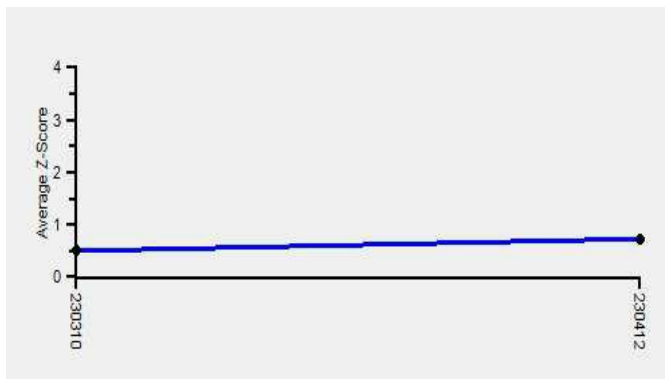
Lab Name : KRSNAA DIAGNOSTICS LTD, TARNTARAN

Sample No : 03

Report Date : 13/02/2024

Sample Date : 23/12/2023

Frequency Histogram Your Method



Note : SDI with * marked are not considered for evaluation

Comments :

Haematology - CBC, Platelet Count						
		N	Mean	SD	CV%	Excluded
	All Analyzer	221	116.06	16.69	14.38	18
Your Analyzer :	Horiba Yumizen H550	44	130.07	17.99	13.83	2
	Sysmex XP-100	25	106.80	11.62	10.88	-
	Horiba Yumizen H500	22	117.90	16.56	14.04	2
	Nihon Kohden Celltac Alpha	21	118.91	12.83	10.79	-
	Mindray BC-5000	14	112.46	7.84	6.97	1
	Erba ELite 580	13	113.92	7.44	6.53	1
	Horiba ABX Micros ES 60	10	119.50	16.31	13.65	-
	Sysmex XN-550	8	101.00	12.55	12.42	-

Remarks: Interpretation of your reports

- a) If your SDI lies between +/- 2.0 SDI then your results are well within limits.
- b) If your SDI lies between +/-2.0 to 2.99 SDI then it is a warning alert flag.
- c) If your SDI is +/- 3.0 SDI or more then it is an action alert flag.

Interpretation when an analyte is reported for multiple samples in a Round:

- a) Reported on 2 samples:
 - Two out of two pass - Acceptable performance
 - One out of two pass - Review for random error & take action if appropriate
 - Both failed - Unacceptable performance, Review for systematic error
- b) Reported on 3 samples:
 - All pass - Acceptable performance
 - Two out of three pass - Review for random error & take action if appropriate
 - One out of three pass - Unacceptable performance, Review for systematic error
 - All failed - Unacceptable performance, Review for systematic error



Lab : 1042

Lab Name : KRSNAA DIAGNOSTICS LTD, TARNTARAN

Report Date : 13/02/2024

Cycle No : 230412

Sample No : 03

Sample Date : 23/12/2023

Haematology - CBC, RDW CV%, %

Comparative Statistics

	N	Mean	SD	CV%	Excluded
All Methods	191	21.26	3.00	14.13	10
Calculated - (Your Method)	184	21.26	3.07	14.42	5
Horiba Yumizen H550 - (Your Analyzer)	41	19.25	1.69	8.79	2

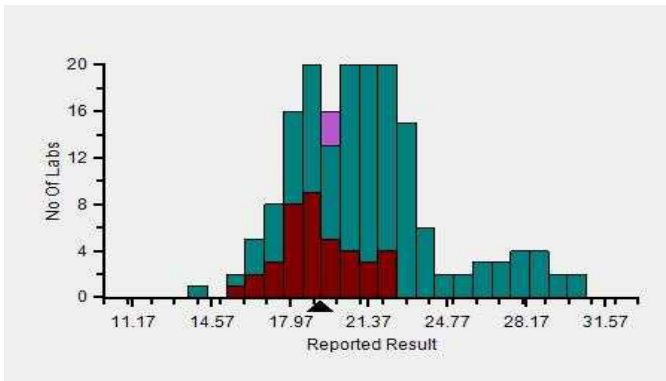
Evaluation Based On - Equipment wise Peer Grouping

Your Result	19.30	SDI / z-Score	0.12
Assigned Value	19.10	Average SDI	0.52
SDPA	1.698	Uncertainty of AV	0.27
Standard Unit Result Val	19.30	%DEV	0.25

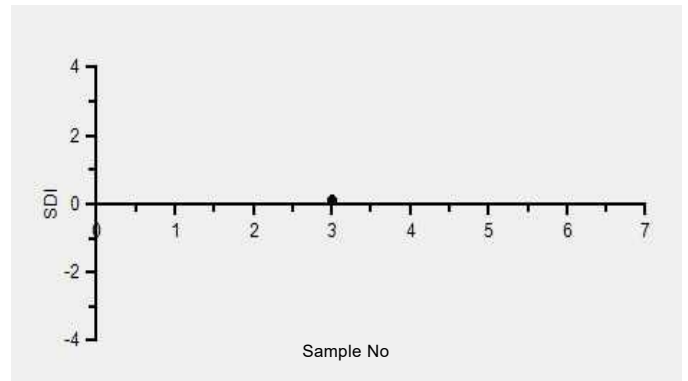
Note : # - Not evaluated / Bimodal distribution

X : SDI more than 4

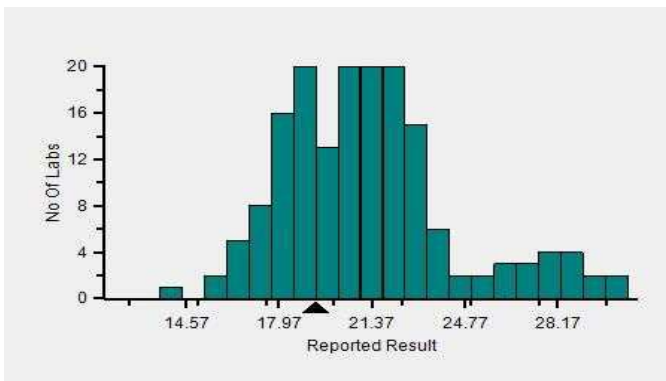
Frequency Histogram



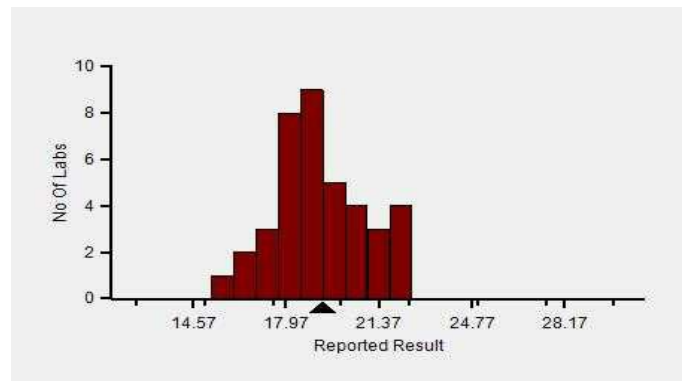
Z-Score Trend - Within Round



Frequency Histogram Your Method



Frequency Histogram Your Analyzer



Lab : 1042

Cycle No : 230412

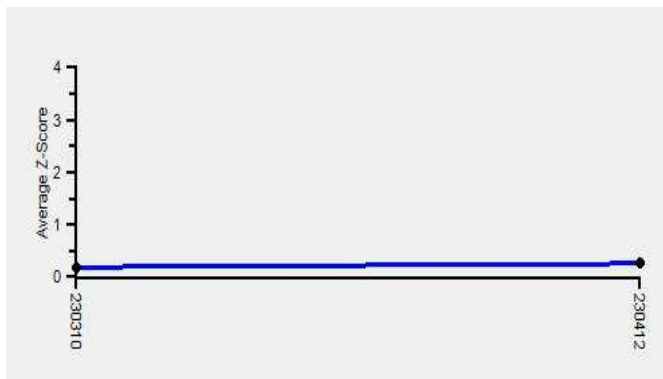
Lab Name : KRSNAA DIAGNOSTICS LTD, TARNTARAN

Sample No : 03

Report Date : 13/02/2024

Sample Date : 23/12/2023

Frequency Histogram Your Method



Note : SDI with * marked are not considered for evaluation

Comments :

Haematology - CBC, RDW CV%						
		N	Mean	SD	CV%	Excluded
	All Analyzer	191	21.26	3.00	14.13	10
Your Analyzer :	Horiba Yumizen H550	41	19.25	1.69	8.79	2
	Systemx XP-100	23	21.45	2.01	9.38	2
	Horiba Yumizen H500	22	19.08	1.54	8.07	-
	Nihon Kohden Celltac Alpha	19	22.65	1.68	7.41	-
	Erba ELite 580	13	21.45	0.73	3.38	-
	Mindray BC-5000	13	27.75	1.39	5.02	-
	Systemx XN-550	8	20.78	1.37	6.59	-
	Horiba ABX Micros ES 60	6	18.04	1.20	6.64	1

Remarks: Interpretation of your reports

- a) If your SDI lies between +/- 2.0 SDI then your results are well within limits.
- b) If your SDI lies between +/-2.0 to 2.99 SDI then it is a warning alert flag.
- c) If your SDI is +/- 3.0 SDI or more then it is an action alert flag.

Interpretation when an analyte is reported for multiple samples in a Round:

- a) Reported on 2 samples:
 - Two out of two pass - Acceptable performance
 - One out of two pass - Review for random error & take action if appropriate
 - Both failed - Unacceptable performance, Review for systematic error
- b) Reported on 3 samples:
 - All pass - Acceptable performance
 - Two out of three pass - Review for random error & take action if appropriate
 - One out of three pass - Unacceptable performance, Review for systematic error
 - All failed - Unacceptable performance, Review for systematic error



Lab : 1042

Cycle No : 230412

Lab Name : KRSNAA DIAGNOSTICS LTD, TARNTARAN

Sample No : 03

Report Date : 13/02/2024

Sample Date : 23/12/2023

Haematology - CBC, Total Leucocytes (WBC) count, / μ l

Comparative Statistics

	N	Mean	SD	CV%	Excluded
All Methods	219	3,226.20	791.90	24.55	40
Impedance - (Your Method)	188	3,184.16	813.06	25.54	31
Horiba Yumizen H550 - (Your Analyzer)	43	2,047.65	278.94	13.62	8

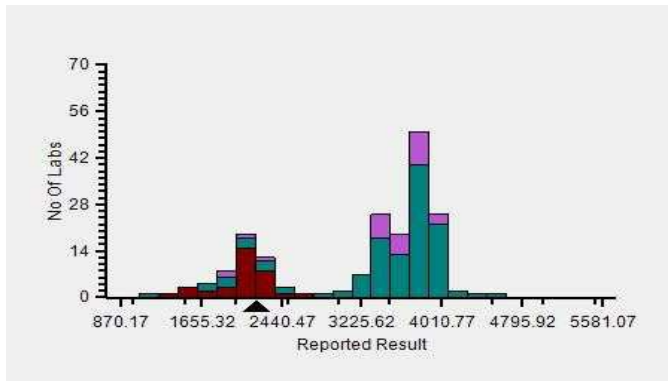
Evaluation Based On - Equipment wise Peer Grouping

Your Result	2.20	SDI / z-Score	0.31
Assigned Value	2,097.73	Average SDI	-1.05
SDPA	333.000	Uncertainty of AV	37.25
Standard Unit Result Val	2,200.00	%DEV	7.44

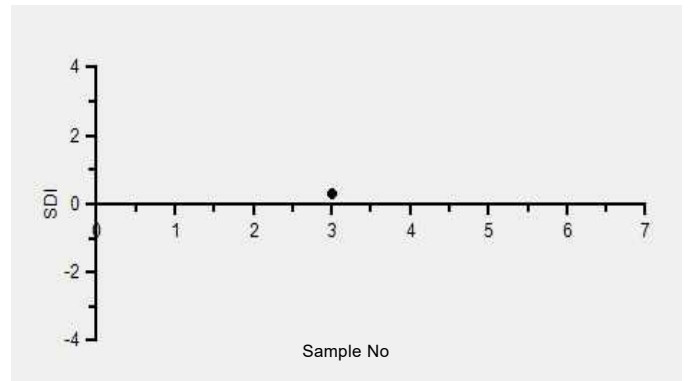
Note : # - Not evaluated / Bimodal distribution

X : SDI more than 4

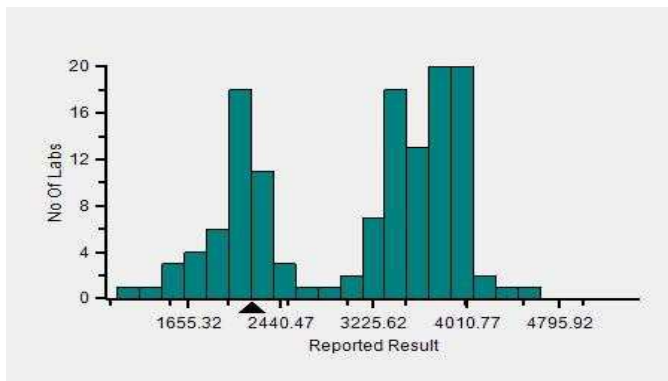
Frequency Histogram



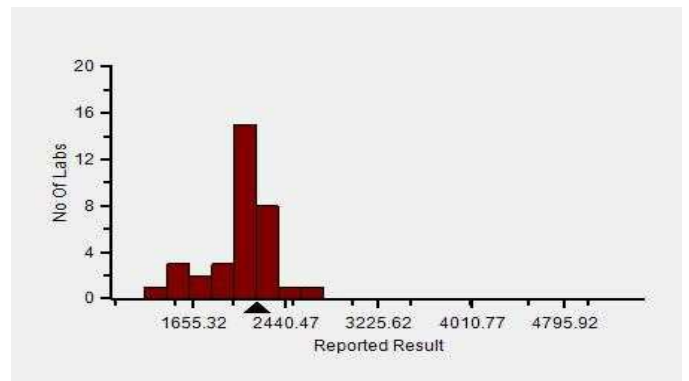
Z-Score Trend - Within Round



Frequency Histogram Your Method



Frequency Histogram Your Analyzer



Lab : 1042

Cycle No : 230412

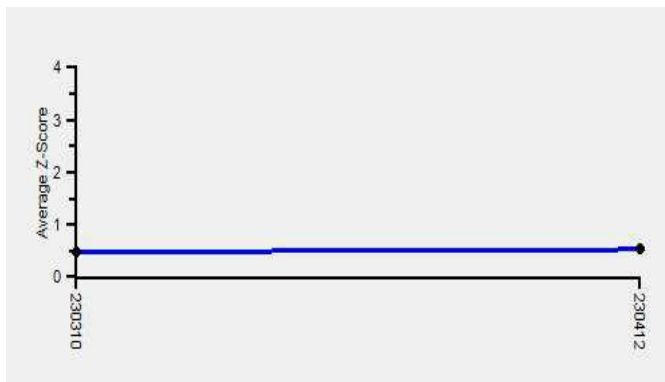
Lab Name : KRSNAA DIAGNOSTICS LTD, TARNTARAN

Sample No : 03

Report Date : 13/02/2024

Sample Date : 23/12/2023

Frequency Histogram Your Method



Note : SDI with * marked are not considered for evaluation

Comments :

Haematology - CBC, Total Leucocytes (WBC) count						
		N	Mean	SD	CV%	Excluded
	All Analyzer	219	3,226.20	791.90	24.55	40
Your Analyzer :	Horiba Yumizen H550	43	2,047.65	278.94	13.62	8
	Sysmex XP-100	25	3,639.13	258.91	7.12	2
	Horiba Yumizen H500	22	2,040.00	310.39	15.22	3
	Nihon Kohden Celltac Alpha	21	3,788.13	142.23	3.76	5
	Erba ELite 580	14	3,810.00	119.50	3.14	3
	Mindray BC-5000	14	3,822.73	139.65	3.65	3
	Horiba ABX Micros ES 60	10	3,510.00	152.39	4.34	-
	Sysmex XN-550	9	3,816.67	107.83	2.83	3

Remarks: Interpretation of your reports

- a) If your SDI lies between +/- 2.0 SDI then your results are well within limits.
- b) If your SDI lies between +/-2.0 to 2.99 SDI then it is a warning alert flag.
- c) If your SDI is +/- 3.0 SDI or more then it is an action alert flag.

Interpretation when an analyte is reported for multiple samples in a Round:

- a) Reported on 2 samples:
 - Two out of two pass - Acceptable performance
 - One out of two pass - Review for random error & take action if appropriate
 - Both failed - Unacceptable performance, Review for systematic error
- b) Reported on 3 samples:
 - All pass - Acceptable performance
 - Two out of three pass - Review for random error & take action if appropriate
 - One out of three pass - Unacceptable performance, Review for systematic error
 - All failed - Unacceptable performance, Review for systematic error

Dr Puneet Kumar Nigam

Dr Puneet Kumar Nigam
PT coordinator & Technical Manager, MHL EQAS
Unit No. 409-416.
Commercial Building - 1A
Kohinoor Mall, Kiro Road, Kurla (W),
Mumbai - 400070

This is a computer generated report hence signature is not required



PC-1022



Metropolis Healthcare Ltd., EQAS

KRSNAA DIAGNOSTICS LTD, TARNTARAN (1042)

Outlier And Analyte Summary Report

Outlier Details For Cycle No 230412 and Sample No 03

Report Date : 13/02/2024

Analyte	Instrument	Result Value	Standard Unit	Z-Score
No Outlier				
Legend @ : z score \leq 2.0 - Acceptable ! : 2.0 < z score < 3.0 - Warning X : z score \geq 3 - Unacceptable # : Not Evaluated ⌚ : Delayed Result Entry * : Not considered for evaluation.				

Problem Classification: _____

Corrective Action: _____

Reviewed by: _____

Dated: _____

Instrument : Horiba Yumizen H550

Analyte	Standard Unit	Result Value	Mean	Z-Score	RMZ
@ Erythrocyte (RBC) Count	mill/cu.mm	2.06	2.03	0.32	-2.37
@ Total Leucocytes (WBC) count	/c.mm	2200.00	2047.65	0.31	-1.25
@ Haemoglobin	g/dL	5.60	5.47	0.47	-2.99
@ MCV (Mean Corpuscular Volume)	fL	117.60	117.12	0.00	0.19
@ MCH (Mean Corpuscular Hb)	pg	27.30	26.96	0.22	0.18
@ MCHC (Mean Corpuscular Hb Concentration)	g/dL	23.20	23.00	0.06	-0.04
@ Platelet Count	1000/ μ L	135.00	130.07	0.75	-1.49
@ Hematocrit	%	24.20	23.76	0.19	-1.95
@ RDW CV%	%	19.30	19.25	0.12	-0.03

Legend @ : Acceptable

! : 2.0 < z score < 3.0 - Warning

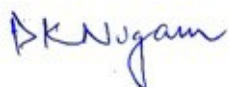
X : z score \geq 3 - Unacceptable

: Not Evaluated

⌚ : Delayed Result Entry

* : Not considered for evaluation.

Total Parameters	9
Not Evaluated Parameters	0
Evaluated Parameters	9
Outlier Parameters (X)	0
EQAS Score Haematology - CBC	100.00 %



Dr Puneet Kumar Nigam
PT coordinator & Technical Manager, MHL EQAS

Unit No. 409-416.

Commercial Building - 1A

Kohinoor Mall, Kirol Road, Kurla (W),

Mumbai - 400070

Lab : 1042

Cycle No : 230412

Lab Name : KRSNAA DIAGNOSTICS LTD, TARNTARAN

Sample No : 04

Report Date : 13/02/2024

Sample Date : 23/12/2023

Haematology - CBC, Erythrocyte (RBC) Count, mill/cu.mm

Comparative Statistics

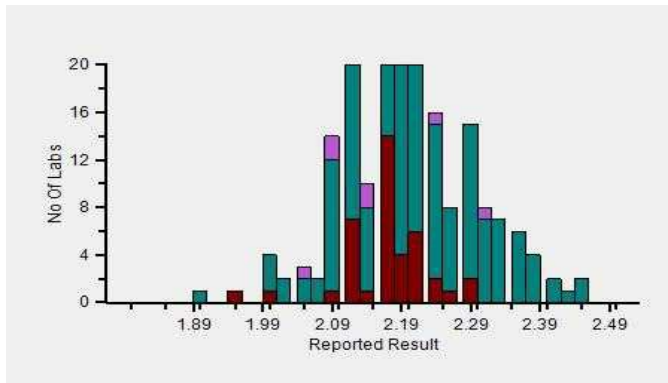
	N	Mean	SD	CV%	Excluded
All Methods	223	2.19	0.10	4.52	6
Impedance - (Your Method)	219	2.19	0.10	4.57	5
Horiba Yumizen H550 - (Your Analyzer)	44	2.14	0.10	4.57	2

Evaluation Based On - Equipment wise Peer Grouping

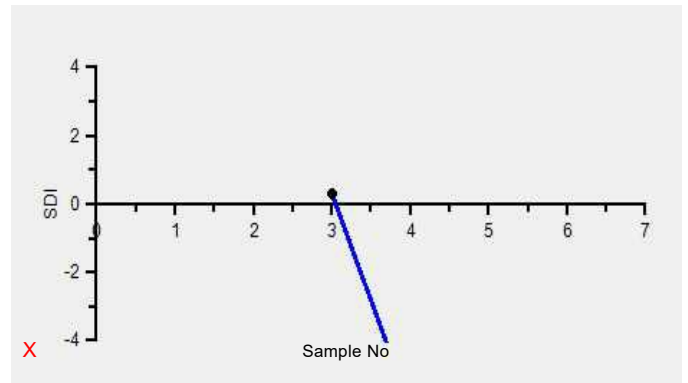
Your Result	1.33	SDI / z-Score	-5.96
Assigned Value	2.16	Average SDI	-2.82
SDPA	0.140	Uncertainty of AV	0.01
Standard Unit Result Val	1.33	%DEV	-37.94

Note : # - Not evaluated / Bimodal distribution
X : SDI more than 4

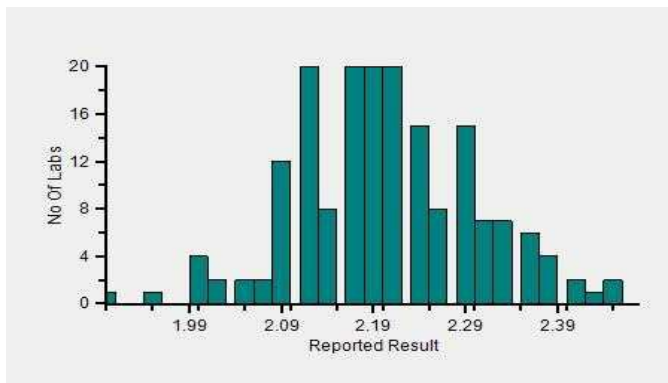
Frequency Histogram



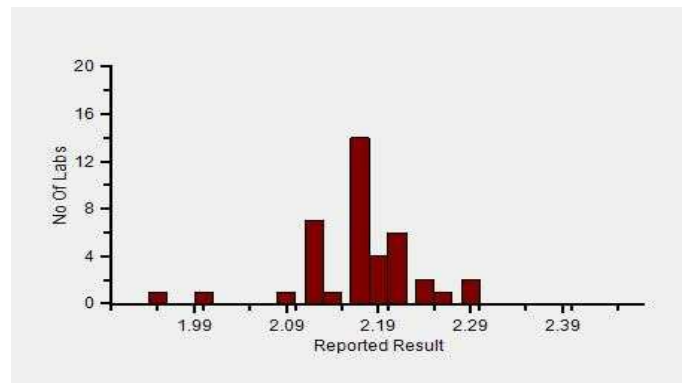
Z-Score Trend - Within Round



Frequency Histogram Your Method



Frequency Histogram Your Analyzer



Lab : 1042

Cycle No : 230412

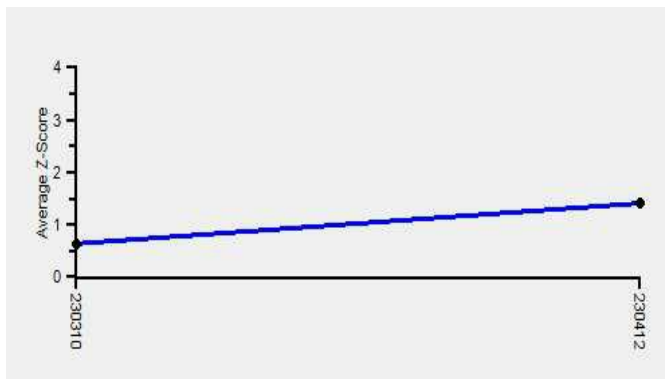
Lab Name : KRSNAA DIAGNOSTICS LTD, TARNTARAN

Sample No : 04

Report Date : 13/02/2024

Sample Date : 23/12/2023

Frequency Histogram Your Method



Note : SDI with * marked are not considered for evaluation

Comments :

Haematology - CBC, Erythrocyte (RBC) Count		N	Mean	SD	CV%	Excluded
	All Analyzer	223	2.19	0.10	4.52	6
Your Analyzer :	Horiba Yumizen H550	44	2.14	0.10	4.57	2
	Sysmex XP-100	24	2.30	0.08	3.35	-
	Horiba Yumizen H500	22	2.16	0.06	2.83	1
	Nihon Kohden Celltac Alpha	21	2.24	0.06	2.68	-
	Erba ELite 580	14	2.16	0.07	3.06	-
	Mindray BC-5000	14	2.16	0.08	3.53	-
	Horiba ABX Micros ES 60	10	2.14	0.13	6.16	-
	Sysmex XN-550	9	2.11	0.06	2.70	-

Remarks: Interpretation of your reports

- a) If your SDI lies between +/- 2.0 SDI then your results are well within limits.
- b) If your SDI lies between +/-2.0 to 2.99 SDI then it is a warning alert flag.
- c) If your SDI is +/- 3.0 SDI or more then it is an action alert flag.

Interpretation when an analyte is reported for multiple samples in a Round:

a) Reported on 2 samples:

- Two out of two pass - Acceptable performance
- One out of two pass - Review for random error & take action if appropriate
- Both failed - Unacceptable performance, Review for systematic error

b) Reported on 3 samples:

- All pass - Acceptable performance
- Two out of three pass - Review for random error & take action if appropriate
- One out of three pass - Unacceptable performance, Review for systematic error
- All failed - Unacceptable performance, Review for systematic error



Lab : 1042

Cycle No : 230412

Lab Name : KRSNAA DIAGNOSTICS LTD, TARNTARAN

Sample No : 04

Report Date : 13/02/2024

Sample Date : 23/12/2023

Haematology - CBC, Haemoglobin, g/dL

Comparative Statistics

	N	Mean	SD	CV%	Excluded
All Methods	224	6.72	0.41	6.08	4
Photometric - (Your Method)	58	6.59	0.42	6.42	2
Horiba Yumizen H550 - (Your Analyzer)	44	6.22	0.17	2.70	2

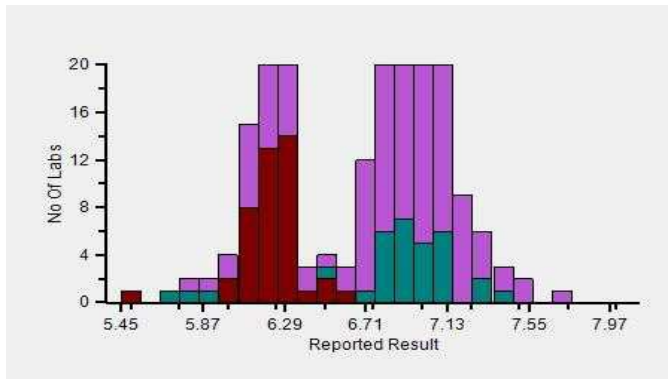
Evaluation Based On - Equipment wise Peer Grouping

Your Result	3.80	SDI / z-Score	-6.21
Assigned Value	6.22	Average SDI	-2.87
SDPA	0.390	Uncertainty of AV	0.02
Standard Unit Result Val	3.80	%DEV	-38.88

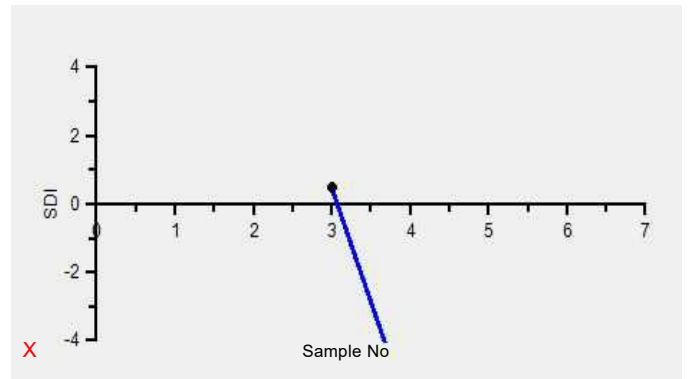
Note : # - Not evaluated / Bimodal distribution

X : SDI more than 4

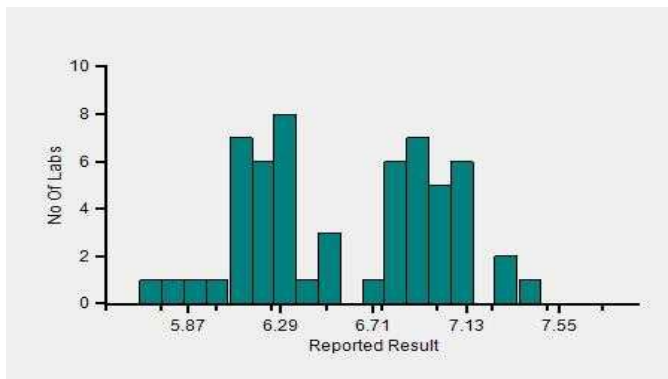
Frequency Histogram



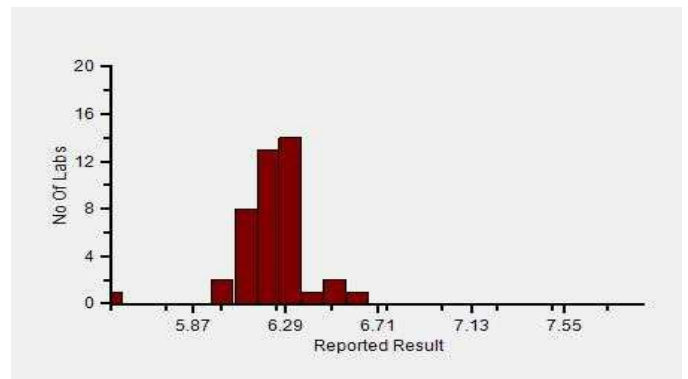
Z-Score Trend - Within Round



Frequency Histogram Your Method



Frequency Histogram Your Analyzer



Lab : 1042

Cycle No : 230412

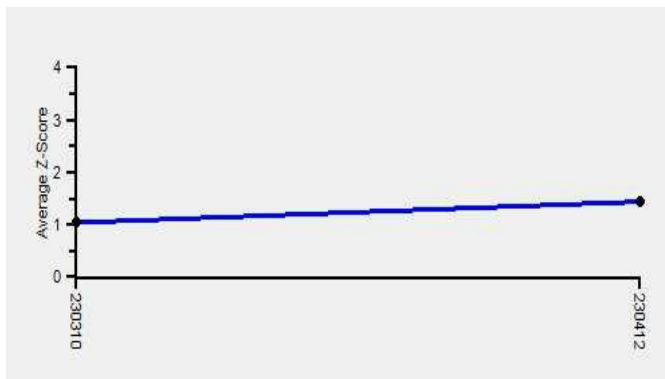
Lab Name : KRSNAA DIAGNOSTICS LTD, TARNTARAN

Sample No : 04

Report Date : 13/02/2024

Sample Date : 23/12/2023

Frequency Histogram Your Method



Note : SDI with * marked are not considered for evaluation

Comments :

Haematology - CBC, Haemoglobin

		N	Mean	SD	CV%	Excluded
	All Analyzer	224	6.72	0.41	6.08	4
Your Analyzer :	Horiba Yumizen H550	44	6.22	0.17	2.70	2
	Sysmex XP-100	25	6.91	0.30	4.37	-
	Horiba Yumizen H500	23	6.20	0.10	1.53	-
	Nihon Kohden Celltac Alpha	21	6.94	0.20	2.85	-
	Erba ELite 580	13	6.83	0.19	2.83	-
	Horiba ABX Micros ES 60	10	6.48	0.40	6.13	-
	Sysmex XN-550	9	7.04	0.10	1.43	-
	Mindray BC-5000	7	7.11	0.27	3.75	-

Remarks: Interpretation of your reports

- a) If your SDI lies between +/- 2.0 SDI then your results are well within limits.
- b) If your SDI lies between +/-2.0 to 2.99 SDI then it is a warning alert flag.
- c) If your SDI is +/- 3.0 SDI or more then it is an action alert flag.

Interpretation when an analyte is reported for multiple samples in a Round:

a) Reported on 2 samples:

- Two out of two pass - Acceptable performance
- One out of two pass - Review for random error & take action if appropriate
- Both failed - Unacceptable performance, Review for systematic error

b) Reported on 3 samples:

- All pass - Acceptable performance
- Two out of three pass - Review for random error & take action if appropriate
- One out of three pass - Unacceptable performance, Review for systematic error
- All failed - Unacceptable performance, Review for systematic error



Lab : 1042

Cycle No : 230412

Lab Name : KRSNAA DIAGNOSTICS LTD, TARNTARAN

Sample No : 04

Report Date : 13/02/2024

Sample Date : 23/12/2023

Haematology - CBC, Hematocrit, %

Comparative Statistics

	N	Mean	SD	CV%	Excluded
All Methods	206	29.07	3.67	12.62	8
Calculated - (Your Method)	135	28.95	3.49	12.05	5
Horiba Yumizen H550 - (Your Analyzer)	42	26.07	2.07	7.94	1

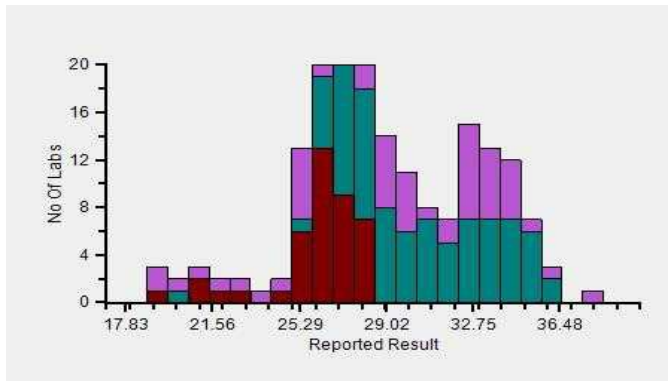
Evaluation Based On - Equipment wise Peer Grouping

Your Result	16.10	SDI / z-Score	-3.78
Assigned Value	26.85	Average SDI	-1.80
SDPA	2.840	Uncertainty of AV	0.17
Standard Unit Result Val	16.10	%DEV	-38.25

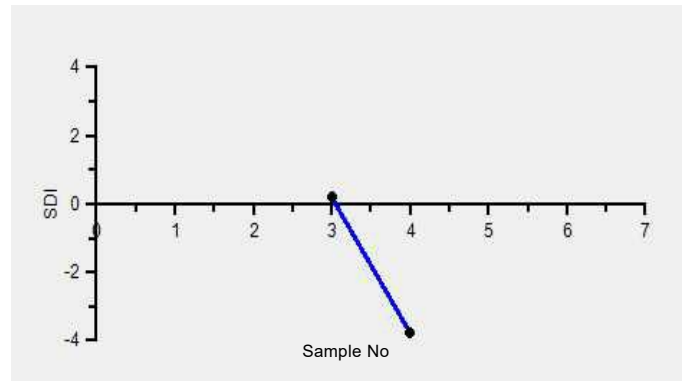
Note : # - Not evaluated / Bimodal distribution

X : SDI more than 4

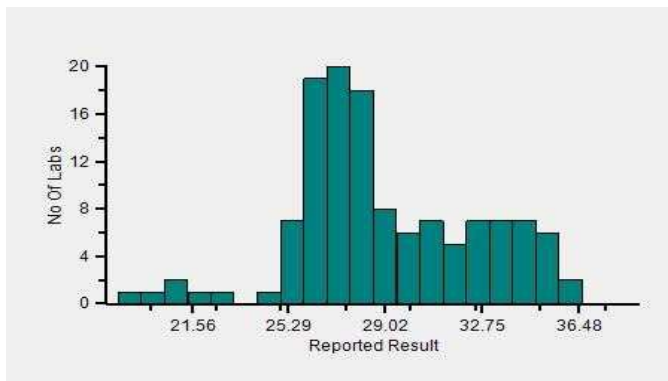
Frequency Histogram



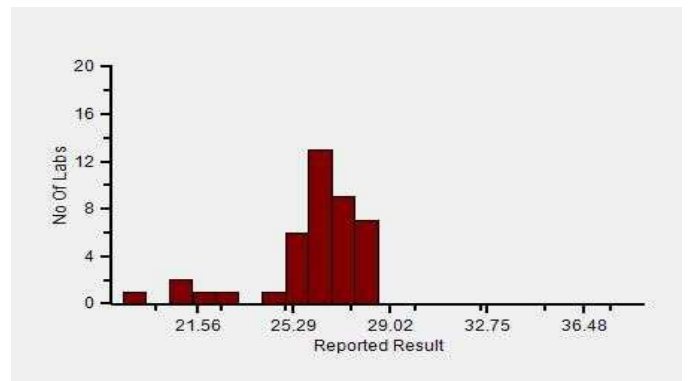
Z-Score Trend - Within Round



Frequency Histogram Your Method



Frequency Histogram Your Analyzer



Lab : 1042

Cycle No : 230412

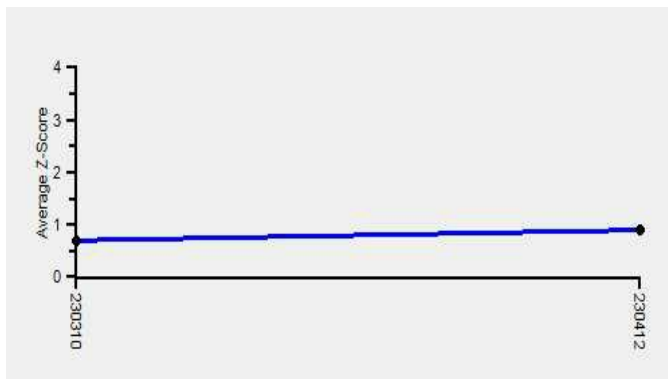
Lab Name : KRSNAA DIAGNOSTICS LTD, TARNTARAN

Sample No : 04

Report Date : 13/02/2024

Sample Date : 23/12/2023

Frequency Histogram Your Method



Note : SDI with * marked are not considered for evaluation

Comments :

Haematology - CBC, Hematocrit		N	Mean	SD	CV%	Excluded
	All Analyzer	206	29.07	3.67	12.62	8
Your Analyzer :	Horiba Yumizen H550	42	26.07	2.07	7.94	1
	Systemx XP-100	23	26.76	1.89	7.05	1
	Horiba Yumizen H500	22	26.65	1.73	6.50	-
	Nihon Kohden Celltac Alpha	20	33.10	2.30	6.95	1
	Mindray BC-5000	14	34.47	1.56	4.51	-
	Erba ELite 580	13	30.58	1.04	3.39	-
	Horiba ABX Micros ES 60	8	26.23	1.41	5.36	1
	Systemx XN-550	8	28.91	1.84	6.36	-

Remarks: Interpretation of your reports

- a) If your SDI lies between +/- 2.0 SDI then your results are well within limits.
- b) If your SDI lies between +/-2.0 to 2.99 SDI then it is a warning alert flag.
- c) If your SDI is +/- 3.0 SDI or more then it is an action alert flag.

Interpretation when an analyte is reported for multiple samples in a Round:

- a) Reported on 2 samples:
 - Two out of two pass - Acceptable performance
 - One out of two pass - Review for random error & take action if appropriate
 - Both failed - Unacceptable performance, Review for systematic error
- b) Reported on 3 samples:
 - All pass - Acceptable performance
 - Two out of three pass - Review for random error & take action if appropriate
 - One out of three pass - Unacceptable performance, Review for systematic error
 - All failed - Unacceptable performance, Review for systematic error



Lab : 1042

Cycle No : 230412

Lab Name : KRSNAA DIAGNOSTICS LTD, TARNTARAN

Sample No : 04

Report Date : 13/02/2024

Sample Date : 23/12/2023

Haematology - CBC, MCH (Mean Corpuscular Hb), pg

Comparative Statistics

	N	Mean	SD	CV%	Excluded
All Methods	221	30.65	1.96	6.38	3
Calculated - (Your Method)	153	30.80	2.09	6.77	3
Horiba Yumizen H550 - (Your Analyzer)	43	29.02	1.53	5.27	--

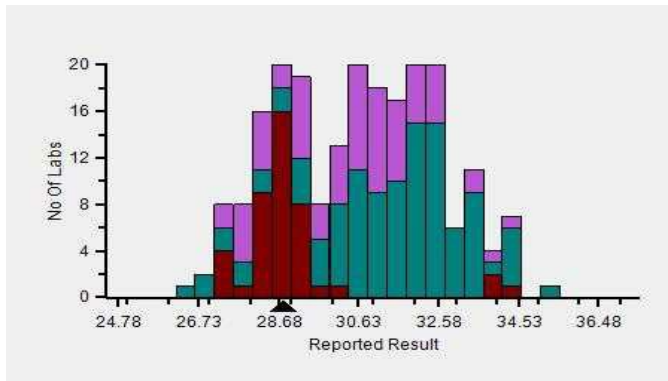
Evaluation Based On - Equipment wise Peer Grouping

Your Result	28.80	SDI / z-Score	0.01
Assigned Value	28.79	Average SDI	0.12
SDPA	1.900	Uncertainty of AV	0.11
Standard Unit Result Val	28.80	%DEV	-0.75

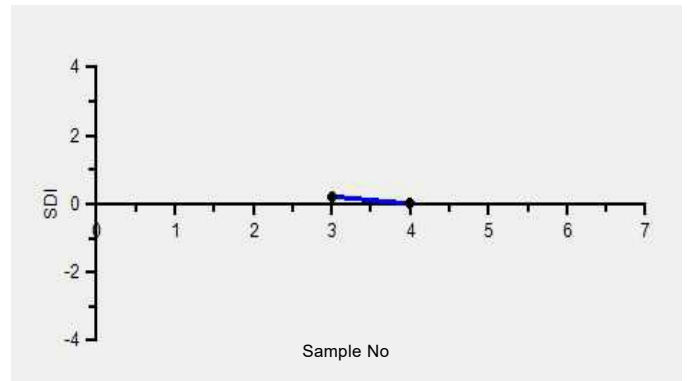
Note : # - Not evaluated / Bimodal distribution

X : SDI more than 4

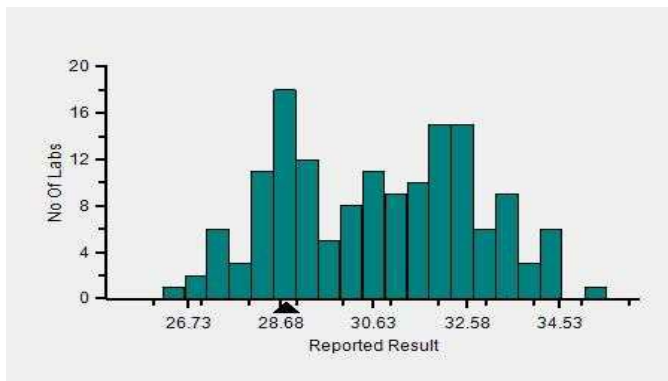
Frequency Histogram



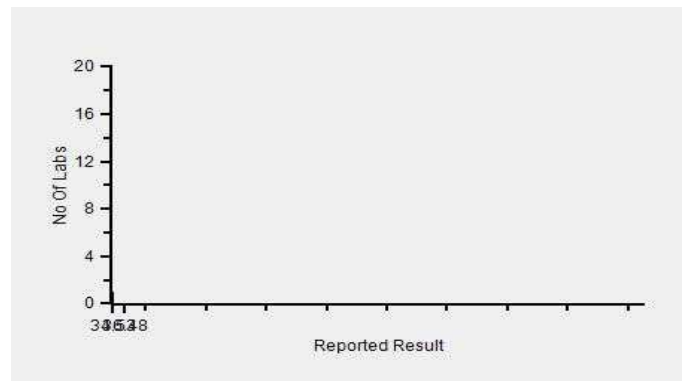
Z-Score Trend - Within Round



Frequency Histogram Your Method



Frequency Histogram Your Analyzer



Lab : 1042

Cycle No : 230412

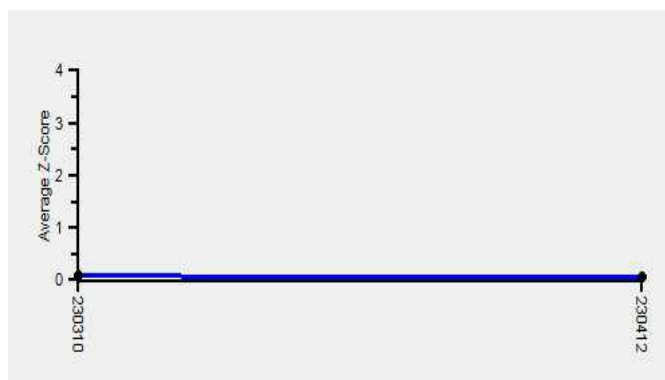
Lab Name : KRSNAA DIAGNOSTICS LTD, TARNTARAN

Sample No : 04

Report Date : 13/02/2024

Sample Date : 23/12/2023

Frequency Histogram Your Method



Note : SDI with * marked are not considered for evaluation

Comments :

Haematology - CBC, MCH (Mean Corpuscular Hb)						
		N	Mean	SD	CV%	Excluded
	All Analyzer	221	30.65	1.96	6.38	3
Your Analyzer :	Horiba Yumizen H550	43	29.02	1.53	5.27	-
	Systemx XP-100	25	29.94	1.40	4.66	-
	Horiba Yumizen H500	23	28.75	0.85	2.96	1
	Nihon Kohden Celltac Alpha	20	31.01	0.86	2.77	-
	Mindray BC-5000	14	32.87	1.04	3.15	-
	Erba ELite 580	13	31.70	0.83	2.63	-
	Horiba ABX Micros ES 60	10	30.19	1.21	3.99	-
	Systemx XN-550	9	33.09	0.54	1.63	-

Remarks: Interpretation of your reports

- a) If your SDI lies between +/- 2.0 SDI then your results are well within limits.
- b) If your SDI lies between +/-2.0 to 2.99 SDI then it is a warning alert flag.
- c) If your SDI is +/- 3.0 SDI or more then it is an action alert flag.

Interpretation when an analyte is reported for multiple samples in a Round:

a) Reported on 2 samples:

- Two out of two pass - Acceptable performance
- One out of two pass - Review for random error & take action if appropriate
- Both failed - Unacceptable performance, Review for systematic error

b) Reported on 3 samples:

- All pass - Acceptable performance
- Two out of three pass - Review for random error & take action if appropriate
- One out of three pass - Unacceptable performance, Review for systematic error
- All failed - Unacceptable performance, Review for systematic error



Lab : 1042

Cycle No : 230412

Lab Name : KRSNAA DIAGNOSTICS LTD, TARNTARAN

Sample No : 04

Report Date : 13/02/2024

Sample Date : 23/12/2023

Haematology - CBC, MCHC (Mean Corpuscular Hb Concentration), g/dL

Comparative Statistics

	N	Mean	SD	CV%	Excluded
All Methods	221	23.20	2.35	10.13	11
Calculated - (Your Method)	151	23.24	2.23	9.60	7
Horiba Yumizen H550 - (Your Analyzer)	42	23.71	1.96	8.25	--

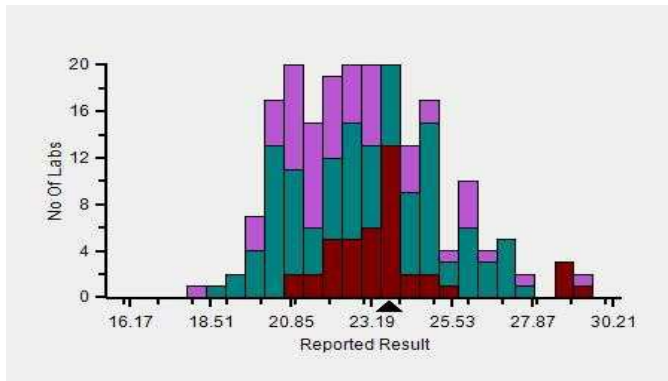
Evaluation Based On - Equipment wise Peer Grouping

Your Result	23.70	SDI / z-Score	0.16
Assigned Value	23.32	Average SDI	0.11
SDPA	2.300	Uncertainty of AV	0.16
Standard Unit Result Val	23.70	%DEV	-0.06

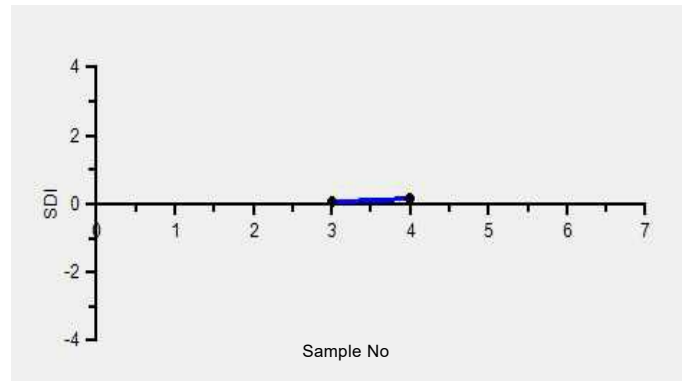
Note : # - Not evaluated / Bimodal distribution

X : SDI more than 4

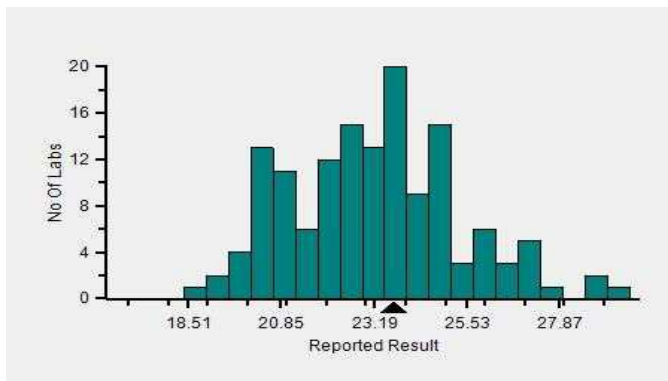
Frequency Histogram



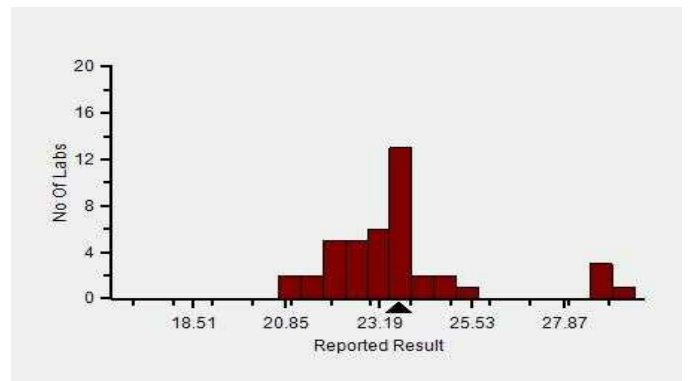
Z-Score Trend - Within Round



Frequency Histogram Your Method



Frequency Histogram Your Analyzer



Lab : 1042

Cycle No : 230412

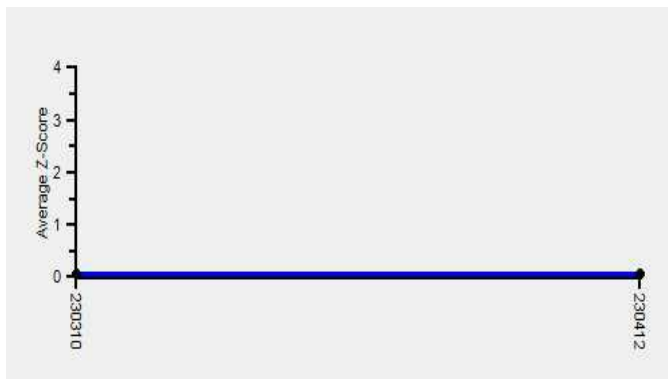
Lab Name : KRSNAA DIAGNOSTICS LTD, TARNTARAN

Sample No : 04

Report Date : 13/02/2024

Sample Date : 23/12/2023

Frequency Histogram Your Method



Note : SDI with * marked are not considered for evaluation

Comments :

Haematology - CBC, MCHC (Mean Corpuscular Hb Concentration)						
		N	Mean	SD	CV%	Excluded
	All Analyzer	221	23.20	2.35	10.13	11
Your Analyzer :	Horiba Yumizen H550	42	23.71	1.96	8.25	-
	Systemx XP-100	25	25.92	2.20	8.49	-
	Horiba Yumizen H500	24	23.04	0.88	3.84	1
	Nihon Kohden Celltac Alpha	20	21.05	1.06	5.04	1
	Mindray BC-5000	14	20.59	1.04	5.03	-
	Erba ELite 580	13	22.27	0.64	2.86	1
	Horiba ABX Micros ES 60	10	24.52	0.74	3.03	1
	Systemx XN-550	9	24.40	1.49	6.09	-

Remarks: Interpretation of your reports

- a) If your SDI lies between +/- 2.0 SDI then your results are well within limits.
- b) If your SDI lies between +/-2.0 to 2.99 SDI then it is a warning alert flag.
- c) If your SDI is +/- 3.0 SDI or more then it is an action alert flag.

Interpretation when an analyte is reported for multiple samples in a Round:

- a) Reported on 2 samples:
 - Two out of two pass - Acceptable performance
 - One out of two pass - Review for random error & take action if appropriate
 - Both failed - Unacceptable performance, Review for systematic error
- b) Reported on 3 samples:
 - All pass - Acceptable performance
 - Two out of three pass - Review for random error & take action if appropriate
 - One out of three pass - Unacceptable performance, Review for systematic error
 - All failed - Unacceptable performance, Review for systematic error



Lab : 1042

Cycle No : 230412

Lab Name : KRSNAA DIAGNOSTICS LTD, TARNTARAN

Sample No : 04

Report Date : 13/02/2024

Sample Date : 23/12/2023

Haematology - CBC, MCV (Mean Corpuscular Volume), fL

Comparative Statistics

	N	Mean	SD	CV%	Excluded
All Methods	222	132.37	15.71	11.87	2
Calculated - (Your Method)	133	132.20	14.77	11.17	1
Horiba Yumizen H550 - (Your Analyzer)	43	122.79	5.76	4.69	--

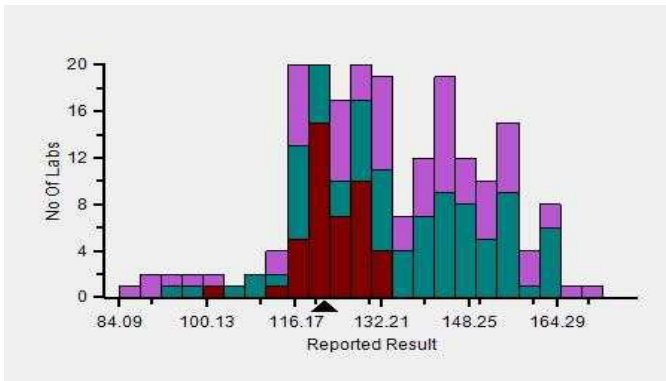
Evaluation Based On - Equipment wise Peer Grouping

Your Result	121.60	SDI / z-Score	-0.26
Assigned Value	123.81	Average SDI	-0.13
SDPA	8.600	Uncertainty of AV	0.71
Standard Unit Result Val	121.60	%DEV	-0.97

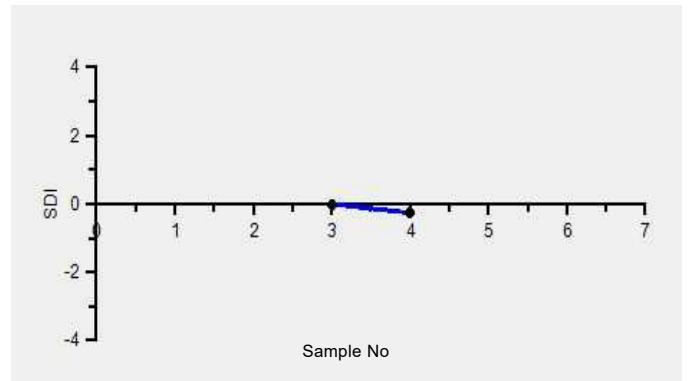
Note : # - Not evaluated / Bimodal distribution

X : SDI more than 4

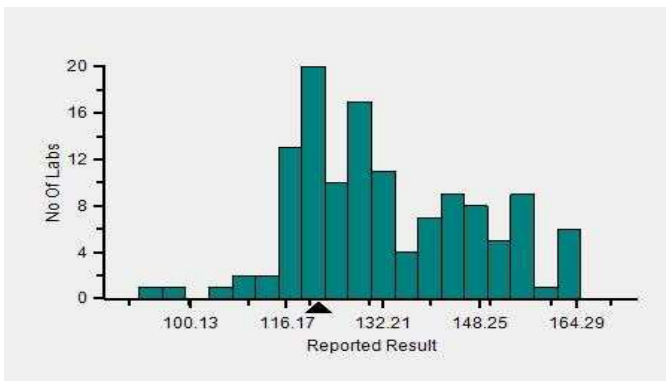
Frequency Histogram



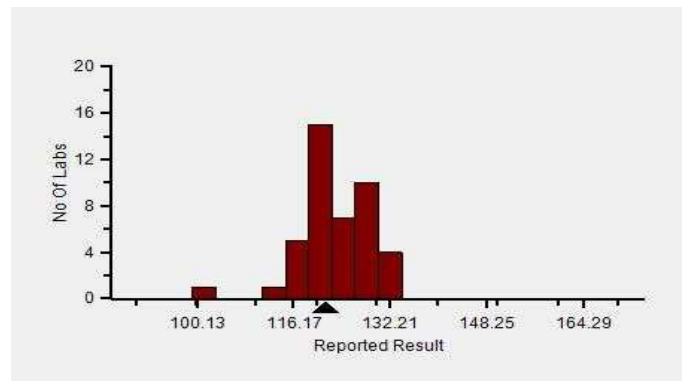
Z-Score Trend - Within Round



Frequency Histogram Your Method



Frequency Histogram Your Analyzer



Lab : 1042

Cycle No : 230412

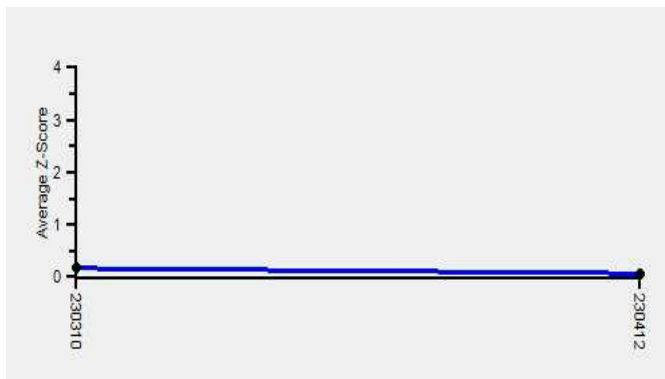
Lab Name : KRSNAA DIAGNOSTICS LTD, TARNTARAN

Sample No : 04

Report Date : 13/02/2024

Sample Date : 23/12/2023

Frequency Histogram Your Method



Note : SDI with * marked are not considered for evaluation

Comments :

Haematology - CBC, MCV (Mean Corpuscular Volume)						
		N	Mean	SD	CV%	Excluded
	All Analyzer	222	132.37	15.71	11.87	2
Your Analyzer :	Horiba Yumizen H550	43	122.79	5.76	4.69	-
	Sysmex XP-100	25	115.63	6.78	5.87	-
	Horiba Yumizen H500	23	124.58	4.09	3.29	-
	Nihon Kohden Celltac Alpha	20	145.37	13.90	9.56	-
	Mindray BC-5000	14	159.79	4.64	2.90	-
	Erba ELite 580	13	142.82	1.81	1.27	-
	Horiba ABX Micros ES 60	10	124.00	5.34	4.31	1
	Sysmex XN-550	9	134.09	3.32	2.48	-

Remarks: Interpretation of your reports

- a) If your SDI lies between +/- 2.0 SDI then your results are well within limits.
- b) If your SDI lies between +/-2.0 to 2.99 SDI then it is a warning alert flag.
- c) If your SDI is +/- 3.0 SDI or more then it is an action alert flag.

Interpretation when an analyte is reported for multiple samples in a Round:

- a) Reported on 2 samples:
 - Two out of two pass - Acceptable performance
 - One out of two pass - Review for random error & take action if appropriate
 - Both failed - Unacceptable performance, Review for systematic error
- b) Reported on 3 samples:
 - All pass - Acceptable performance
 - Two out of three pass - Review for random error & take action if appropriate
 - One out of three pass - Unacceptable performance, Review for systematic error
 - All failed - Unacceptable performance, Review for systematic error



Lab : 1042

Cycle No : 230412

Lab Name : KRSNAA DIAGNOSTICS LTD, TARNTARAN

Sample No : 04

Report Date : 13/02/2024

Sample Date : 23/12/2023

Haematology - CBC, Platelet Count, 1000/ μ L

Comparative Statistics

	N	Mean	SD	CV%	Excluded
All Methods	222	218.96	22.67	10.35	24
Impedance - (Your Method)	212	220.01	22.47	10.21	21
Horiba Yumizen H550 - (Your Analyzer)	44	227.36	18.07	7.95	4

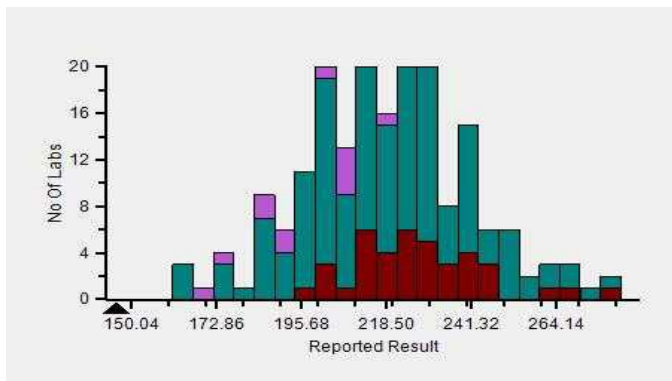
Evaluation Based On - Equipment wise Peer Grouping

Your Result	146.00	SDI / z-Score	-3.68
Assigned Value	224.79	Average SDI	-1.47
SDPA	21.400	Uncertainty of AV	2.29
Standard Unit Result Val	146.00	%DEV	-35.78

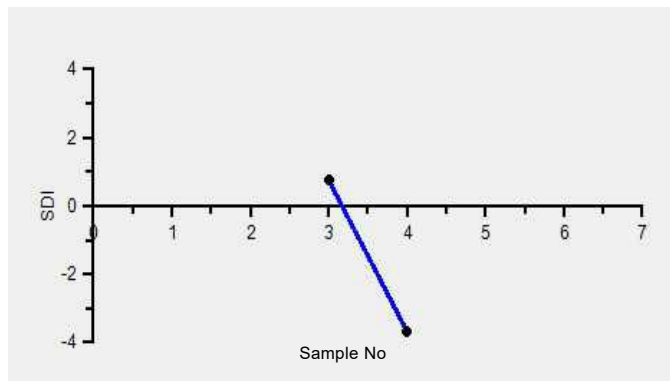
Note : # - Not evaluated / Bimodal distribution

X : SDI more than 4

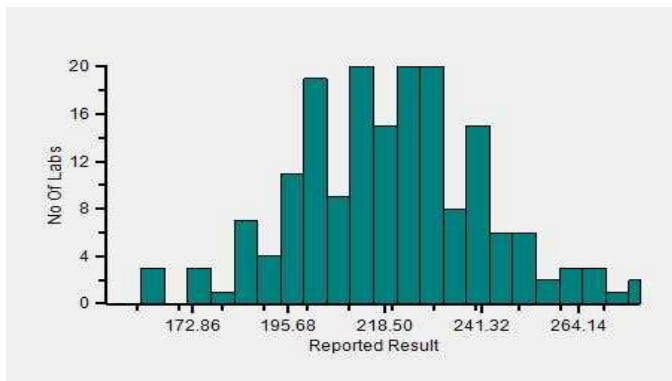
Frequency Histogram



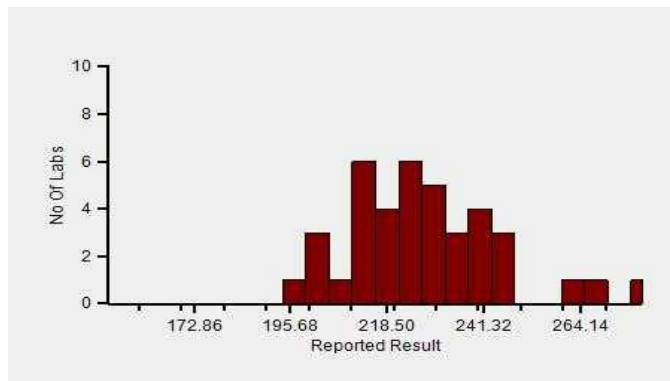
Z-Score Trend - Within Round



Frequency Histogram Your Method



Frequency Histogram Your Analyzer



Lab : 1042

Cycle No : 230412

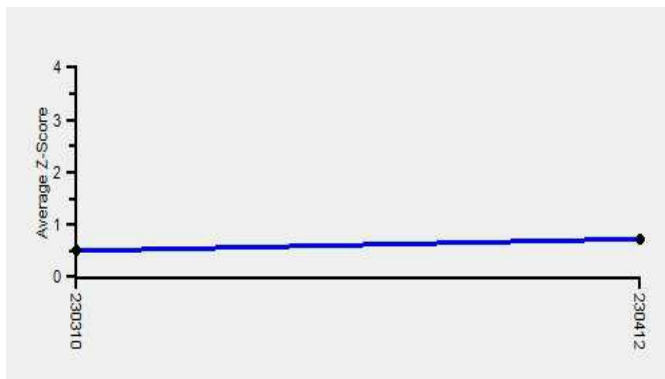
Lab Name : KRSNAA DIAGNOSTICS LTD, TARNTARAN

Sample No : 04

Report Date : 13/02/2024

Sample Date : 23/12/2023

Frequency Histogram Your Method



Note : SDI with * marked are not considered for evaluation

Comments :

Haematology - CBC, Platelet Count						
		N	Mean	SD	CV%	Excluded
	All Analyzer	222	218.96	22.67	10.35	24
Your Analyzer :	Horiba Yumizen H550	44	227.36	18.07	7.95	4
	Sysmex XP-100	25	208.48	17.77	8.53	2
	Horiba Yumizen H500	22	216.30	20.15	9.31	2
	Nihon Kohden Celltac Alpha	21	236.35	21.55	9.12	-
	Mindray BC-5000	14	216.77	9.71	4.48	1
	Erba ELite 580	13	218.33	10.94	5.01	1
	Horiba ABX Micros ES 60	10	221.70	23.84	10.75	-
	Sysmex XN-550	8	201.13	11.69	5.81	-

Remarks: Interpretation of your reports

- a) If your SDI lies between +/- 2.0 SDI then your results are well within limits.
- b) If your SDI lies between +/-2.0 to 2.99 SDI then it is a warning alert flag.
- c) If your SDI is +/- 3.0 SDI or more then it is an action alert flag.

Interpretation when an analyte is reported for multiple samples in a Round:

- a) Reported on 2 samples:
 - Two out of two pass - Acceptable performance
 - One out of two pass - Review for random error & take action if appropriate
 - Both failed - Unacceptable performance, Review for systematic error
- b) Reported on 3 samples:
 - All pass - Acceptable performance
 - Two out of three pass - Review for random error & take action if appropriate
 - One out of three pass - Unacceptable performance, Review for systematic error
 - All failed - Unacceptable performance, Review for systematic error



Lab : 1042

Cycle No : 230412

Lab Name : KRSNAA DIAGNOSTICS LTD, TARNTARAN

Sample No : 04

Report Date : 13/02/2024

Sample Date : 23/12/2023

Haematology - CBC, RDW CV%, %

Comparative Statistics

	N	Mean	SD	CV%	Excluded
All Methods	190	22.08	4.44	20.09	8
Calculated - (Your Method)	183	21.87	4.26	19.46	6
Horiba Yumizen H550 - (Your Analyzer)	41	18.24	1.80	9.85	2

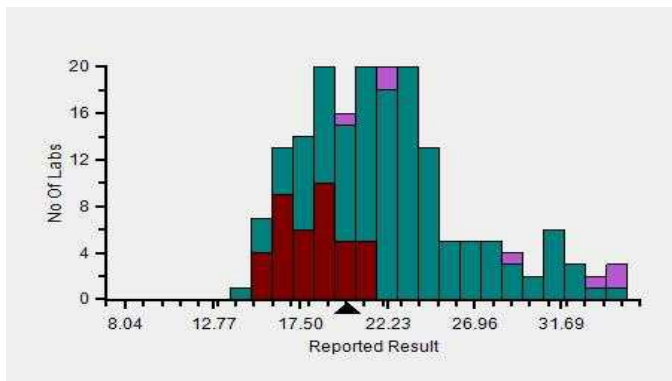
Evaluation Based On - Equipment wise Peer Grouping

Your Result	20.10	SDI / z-Score	0.91
Assigned Value	18.37	Average SDI	0.52
SDPA	1.893	Uncertainty of AV	0.30
Standard Unit Result Val	20.10	%DEV	10.21

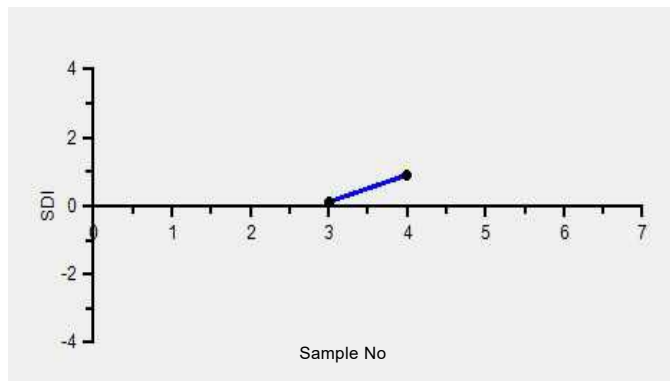
Note : # - Not evaluated / Bimodal distribution

X : SDI more than 4

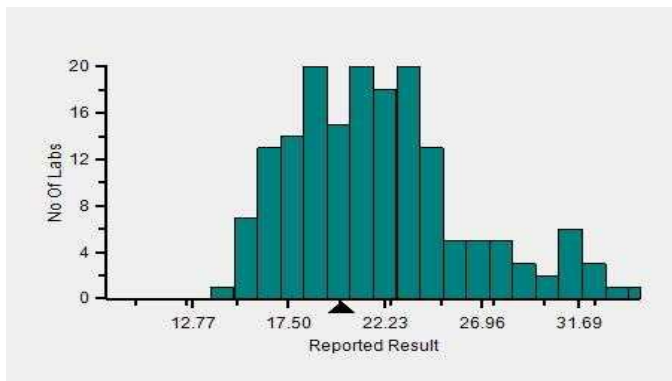
Frequency Histogram



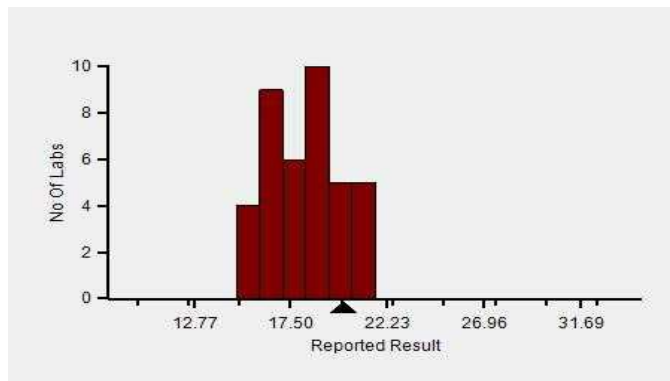
Z-Score Trend - Within Round



Frequency Histogram Your Method



Frequency Histogram Your Analyzer



Lab : 1042

Cycle No : 230412

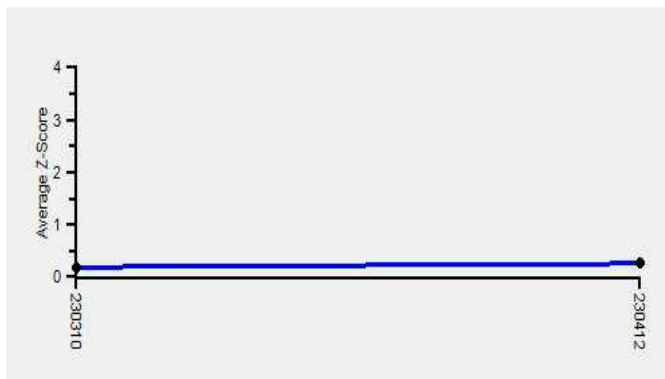
Lab Name : KRSNAA DIAGNOSTICS LTD, TARNTARAN

Sample No : 04

Report Date : 13/02/2024

Sample Date : 23/12/2023

Frequency Histogram Your Method



Note : SDI with * marked are not considered for evaluation

Comments :

Haematology - CBC, RDW CV%						
		N	Mean	SD	CV%	Excluded
	All Analyzer	190	22.08	4.44	20.09	8
Your Analyzer :	Horiba Yumizen H550	41	18.24	1.80	9.85	2
	System XP-100	23	23.55	4.21	17.89	-
	Horiba Yumizen H500	22	18.44	1.76	9.53	-
	Nihon Kohden Celltac Alpha	19	24.71	1.91	7.73	-
	Erba ELite 580	13	21.48	0.91	4.23	-
	Mindray BC-5000	13	30.62	2.28	7.45	1
	System XN-550	8	21.89	4.07	18.61	-
	Horiba ABX Micros ES 60	6	18.88	0.86	4.54	1

Remarks: Interpretation of your reports

- a) If your SDI lies between +/- 2.0 SDI then your results are well within limits.
- b) If your SDI lies between +/-2.0 to 2.99 SDI then it is a warning alert flag.
- c) If your SDI is +/- 3.0 SDI or more then it is an action alert flag.

Interpretation when an analyte is reported for multiple samples in a Round:

- a) Reported on 2 samples:
 - Two out of two pass - Acceptable performance
 - One out of two pass - Review for random error & take action if appropriate
 - Both failed - Unacceptable performance, Review for systematic error
- b) Reported on 3 samples:
 - All pass - Acceptable performance
 - Two out of three pass - Review for random error & take action if appropriate
 - One out of three pass - Unacceptable performance, Review for systematic error
 - All failed - Unacceptable performance, Review for systematic error



Lab : 1042

Cycle No : 230412

Lab Name : KRSNAA DIAGNOSTICS LTD, TARNTARAN

Sample No : 04

Report Date : 13/02/2024

Sample Date : 23/12/2023

Haematology - CBC, Total Leucocytes (WBC) count, / μ l

Comparative Statistics

	N	Mean	SD	CV%	Excluded
All Methods	220	7,277.89	1,145.02	15.73	35
Impedance - (Your Method)	188	7,228.61	1,183.51	16.37	28
Horiba Yumizen H550 - (Your Analyzer)	43	5,806.22	1,103.90	19.01	5

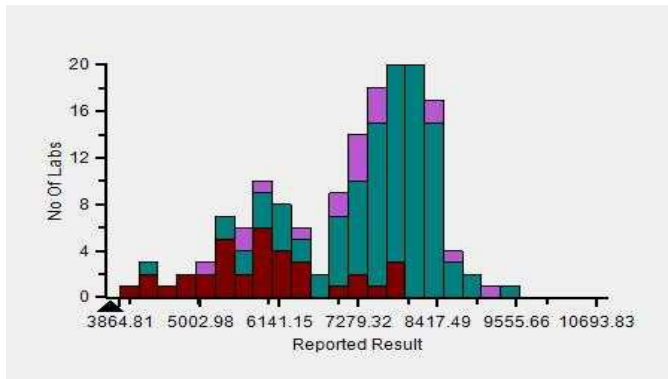
Evaluation Based On - Equipment wise Peer Grouping

Your Result	3.72	SDI / z-Score	-2.41
Assigned Value	6,017.66	Average SDI	-1.05
SDPA	952.966	Uncertainty of AV	165.19
Standard Unit Result Val	3,720.00	%DEV	-35.93

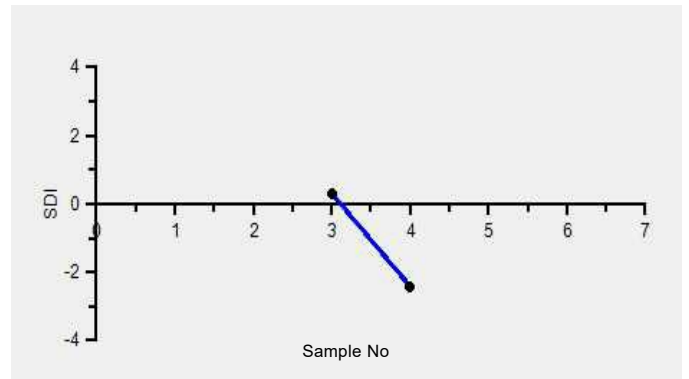
Note : # - Not evaluated / Bimodal distribution

X : SDI more than 4

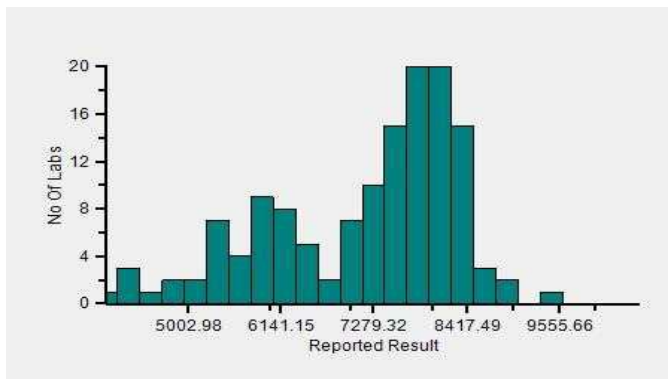
Frequency Histogram



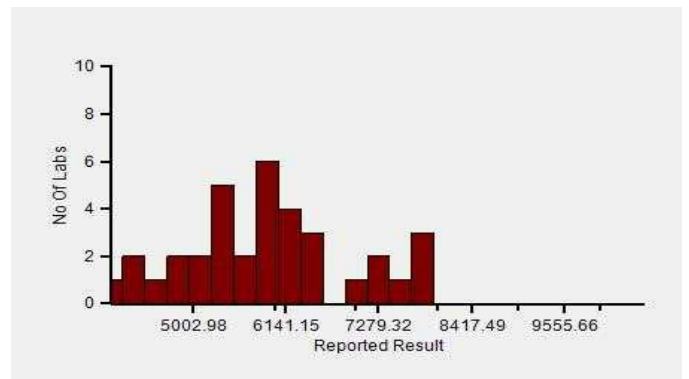
Z-Score Trend - Within Round



Frequency Histogram Your Method



Frequency Histogram Your Analyzer



Lab : 1042

Cycle No : 230412

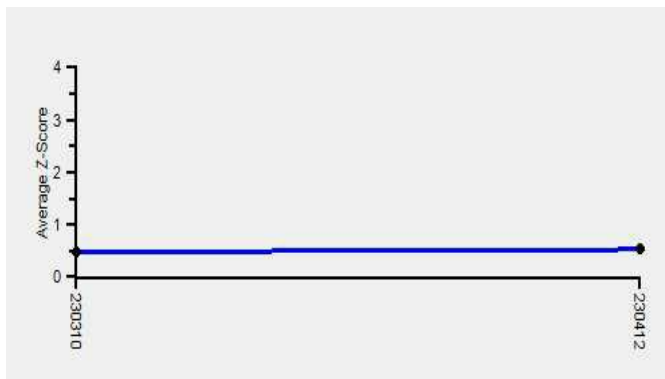
Lab Name : KRSNAA DIAGNOSTICS LTD, TARNTARAN

Sample No : 04

Report Date : 13/02/2024

Sample Date : 23/12/2023

Frequency Histogram Your Method



Note : SDI with * marked are not considered for evaluation

Comments :

Haematology - CBC, Total Leucocytes (WBC) count		N	Mean	SD	CV%	Excluded
	All Analyzer	220	7,277.89	1,145.02	15.73	35
Your Analyzer :	Horiba Yumizen H550	43	5,806.22	1,103.90	19.01	5
	Systemx XP-100	25	7,616.00	632.25	8.30	-
	Horiba Yumizen H500	22	5,897.65	716.64	12.15	5
	Nihon Kohden Celltac Alpha	21	7,947.50	231.36	2.91	5
	Erba ELite 580	14	8,336.36	305.20	3.66	3
	Mindray BC-5000	14	7,907.50	299.88	3.79	2
	Horiba ABX Micros ES 60	10	7,640.00	416.87	5.46	-
	Systemx XN-550	9	8,105.00	262.05	3.23	3

Remarks: Interpretation of your reports

- a) If your SDI lies between +/- 2.0 SDI then your results are well within limits.
- b) If your SDI lies between +/-2.0 to 2.99 SDI then it is a warning alert flag.
- c) If your SDI is +/- 3.0 SDI or more then it is an action alert flag.

Interpretation when an analyte is reported for multiple samples in a Round:

- a) Reported on 2 samples:
 - Two out of two pass - Acceptable performance
 - One out of two pass - Review for random error & take action if appropriate
 - Both failed - Unacceptable performance, Review for systematic error
- b) Reported on 3 samples:
 - All pass - Acceptable performance
 - Two out of three pass - Review for random error & take action if appropriate
 - One out of three pass - Unacceptable performance, Review for systematic error
 - All failed - Unacceptable performance, Review for systematic error

Dr. Puneet Kumar Nigam

Dr Puneet Kumar Nigam
PT coordinator & Technical Manager, MHL EQAS
Unit No. 409-416.
Commercial Building - 1A
Kohinoor Mall, Kirool Road, Kurla (W),
Mumbai - 400070

This is a computer generated report hence signature is not required



PC-1022

Analyte	Instrument	Result Value	Standard Unit	Z-Score
X Erythrocyte (RBC) Count	Horiba Yumizen H550	1.33	10 ⁶ /μL	-5.96
! Total Leucocytes (WBC) count	Horiba Yumizen H550	3720.00	1000/ μL	-2.41
X Haemoglobin	Horiba Yumizen H550	3.80	g/dL	-6.21
X Platelet Count	Horiba Yumizen H550	146.00	1000/ μL	-3.68
X Hematocrit	Horiba Yumizen H550	16.10	%	-3.78

Legend @ : z score ≤ 2.0 - Acceptable
 ! : 2.0 < z score < 3.0 - Warning
 X : z score ≥ 3 - Unacceptable
 # : Not Evaluated
 ⊖ : Delayed Result Entry
 * : Not considered for evaluation.

Problem Classification: _____

Corrective Action: _____

Reviewed by: _____

Dated: _____

Instrument : Horiba Yumizen H550

Analyte	Standard Unit	Result Value	Mean	Z-Score	RMZ
X Erythrocyte (RBC) Count	mill/cu.mm	1.33	2.14	-5.96	-2.37
! Total Leucocytes (WBC) count	/c.mm	3720.00	5806.22	-2.41	-1.25
X Haemoglobin	g/dL	3.80	6.22	-6.21	-2.99
@ MCV (Mean Corpuscular Volume)	fL	121.60	122.79	-0.26	0.19
@ MCH (Mean Corpuscular Hb)	pg	28.80	29.02	0.01	0.18
@ MCHC (Mean Corpuscular Hb Concentration)	g/dL	23.70	23.71	0.16	-0.04
X Platelet Count	1000/ μ L	146.00	227.36	-3.68	-1.49
X Hematocrit	%	16.10	26.07	-3.78	-1.95
@ RDW CV%	%	20.10	18.24	0.91	-0.03

Legend **@** : Acceptable

! : 2.0 < z score < 3.0 - Warning

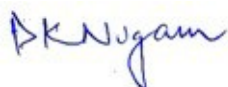
X : z score \geq 3 - Unacceptable

: Not Evaluated

⌚ : Delayed Result Entry

***** : Not considered for evaluation.

Total Parameters	9
Not Evaluated Parameters	0
Evaluated Parameters	9
Outlier Parameters (X)	4
EQAS Score Haematology - CBC	55.56 %



Dr Puneet Kumar Nigam
PT coordinator & Technical Manager, MHL EQAS

Unit No. 409-416.

Commercial Building - 1A

Kohinoor Mall, Kirol Road, Kurla (W),

Mumbai - 400070

Lab : 1042

Lab Name : KRSNAA DIAGNOSTICS LTD, TARNTARAN

Report Date : 13/02/2024

Cycle No : 230412

Sample No : 02

Sample Date : 23/12/2023

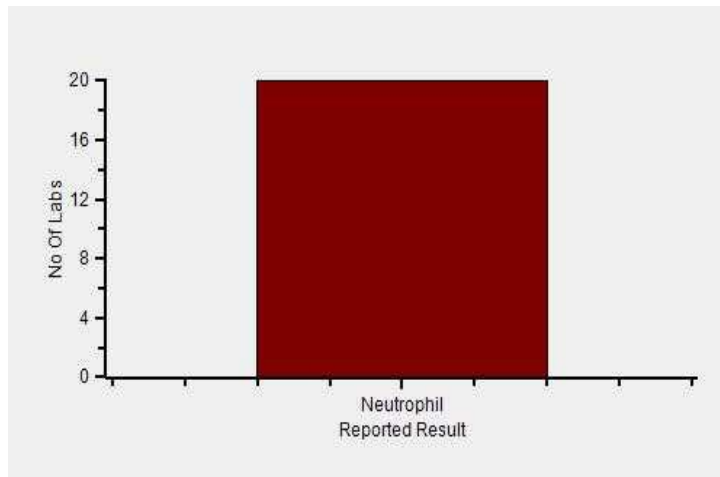
Haematology - Peripheral smear diagnosis, Diagnosis (Slide), -

	N
■ All Methods	29
■ -- (Your Method)	29
■ -- (Your Analyzer)	29

Your Result	Neutrophilic Leucocytosis
Result Expected	#

Note : # is an indication that this parameter has not been evaluated

Frequency Histogram



Lab : 1042

Lab Name : KRSNAA DIAGNOSTICS LTD, TARNTARAN

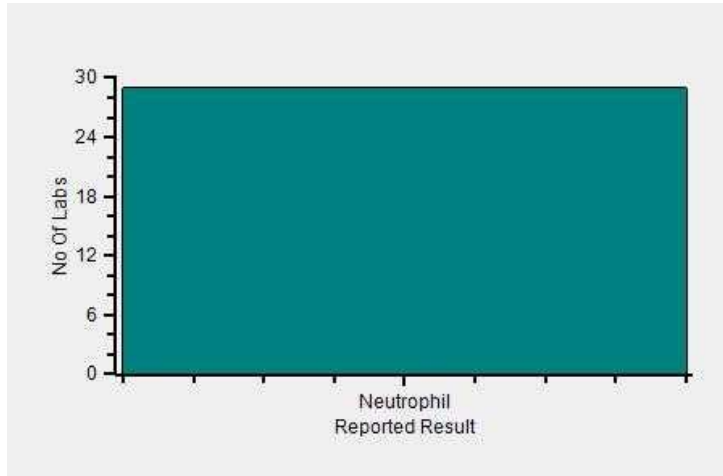
Report Date : 13/02/2024

Cycle No : 230412

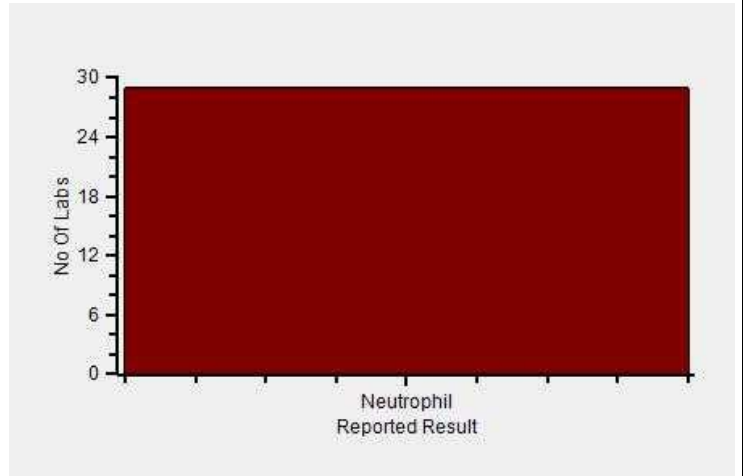
Sample No : 02

Sample Date : 23/12/2023

Frequency Histogram Your Method



Frequency Histogram Your Analyzer



Reported Results Legends :-

Nor	: Normal
Abn	: Abnormal
CLL/ CLD	: CLL/Chronic lymphoproliferative disorder
MA	: Microcytic hypochromic anaemia
Eos	: Eosinophilia
PV	: P. vivax
Leu	: Leucopenia
DIMANETH	: Dimorphic Anaemia with Thrombocytopenia
EOSP LEU	: Eosinophilic leucocytosis
LEUWTHRO	: Leucopenia with Thrombocytopenia
PPVSN	: P. falciparum and P. vivax seen

Comments :

Interpretation when an analyte is reported for multiple samples in a Round:

- a) Reported on 2 samples:
 - Two out of two pass - Acceptable performance
 - One out of two pass - Review for random error & take action if appropriate
 - Both failed - Unacceptable performance, Review for systematic error
- b) Reported on 3 samples:
 - All pass - Acceptable performance
 - Two out of three pass - Review for random error & take action if appropriate
 - One out of three pass - Unacceptable performance, Review for systematic error
 - All failed - Unacceptable performance, Review for systematic error

Dr Puneet Kumar Nigam

Dr Puneet Kumar Nigam
PT coordinator & Technical Manager, MHL EQAS
Unit No. 409-416.
Commercial Building - 1A
Kohinoor Mall, Kiro Road, Kurla (W),
Mumbai - 400070

This is a computer generated report hence signature is not required



PC-1022



Metropolis Healthcare Ltd., EQAS

KRSNAA DIAGNOSTICS LTD, TARNTARAN (1042)

Outlier And Analyte Summary Report

Outlier Details For Cycle No 230412 and Sample No 02

Report Date : 13/02/2024

Analyte	Instrument	Result Value	Standard Unit
No Outlier			
Legend @ : Acceptable X : Unacceptable # : Not Evaluated ⌚ : Delayed Result Entry			

Problem Classification: _____

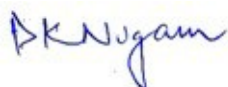
Corrective Action: _____

Reviewed by: _____

Dated: _____

Instrument : -

Analyte	Standard Unit	Result Value	Accepted Value
@ Diagnosis (Slide)	-	Neutrophilic Leucocytosis	Neutrophilic Leucocytosis
Legend @ : Acceptable		Total Parameters	1
@ : Acceptable		Not Evaluated Parameters	0
X : Unacceptable		Evaluated Parameters	1
# : Not Evaluated		Outlier Parameters (X)	0
Ⓞ : Delayed Result Entry		EQAS Score Haematology- Peripheral smear diagnosis	100.00 %



Dr Puneet Kumar Nigam
PT coordinator & Technical Manager, MHL EQAS
Unit No. 409-416.
Commercial Building - 1A
Kohinoor Mall, Kiroil Road, Kurla (W),
Mumbai - 400070

Lab : 1042

Cycle No : 230412

Lab Name : KRSNAA DIAGNOSTICS LTD, TARNTARAN

Sample No : 02

Report Date : 13/02/2024

Sample Date : 23/12/2023

Haematology-PS Slide Count Qualitative, Eosinophil., -

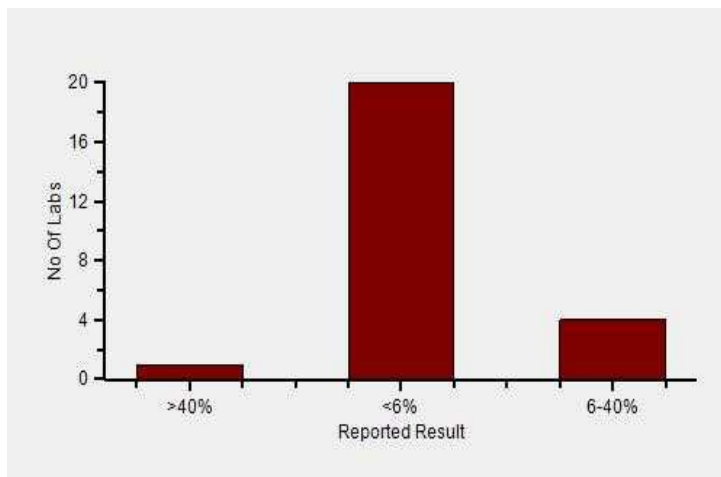
- All Methods
- Microscopy - (Your Method)
- - - (Your Analyzer)

N
42
42
42

Your Result	<6%
Result Expected	<6%

Note : # is an indication that this parameter has not been evaluated

Frequency Histogram



Lab : 1042

Cycle No : 230412

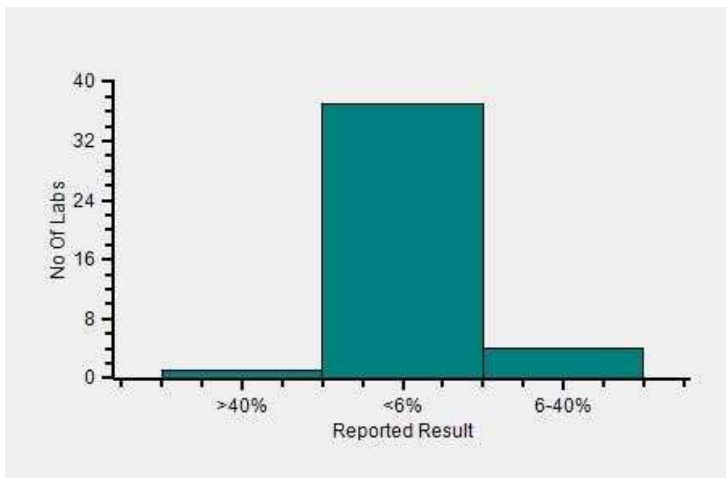
Lab Name : KRSNAA DIAGNOSTICS LTD, TARNTARAN

Sample No : 02

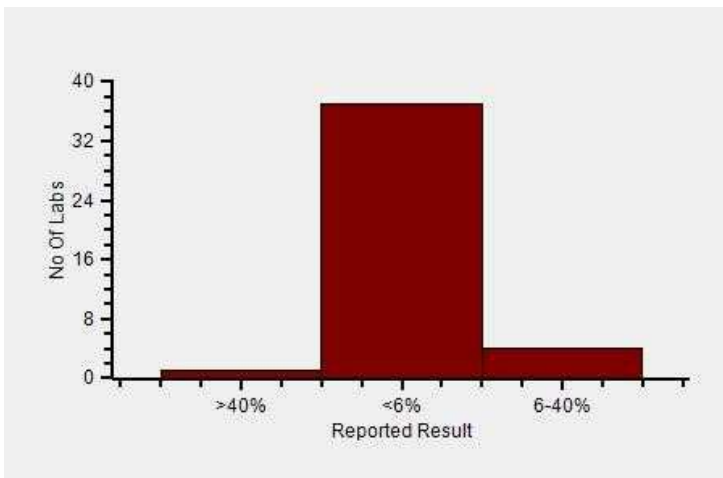
Report Date : 13/02/2024

Sample Date : 23/12/2023

Frequency Histogram Your Method



Frequency Histogram Your Analyzer



Reported Results Legends :-

>40%	: >40%
<10%	: <10%
<6%	: <6%
<1%	: <1%
6-40%	: 6-40%
1-6%	: 1-6%
>6%	: >6%

Comments :

Interpretation when an analyte is reported for multiple samples in a Round:

a) Reported on 2 samples:

- Two out of two pass - Acceptable performance
- One out of two pass - Review for random error & take action if appropriate
- Both failed - Unacceptable performance, Review for systematic error

b) Reported on 3 samples:

- All pass - Acceptable performance
- Two out of three pass - Review for random error & take action if appropriate
- One out of three pass - Unacceptable performance, Review for systematic error
- All failed - Unacceptable performance, Review for systematic error



Lab : 1042

Cycle No : 230412

Lab Name : KRSNAA DIAGNOSTICS LTD, TARNTARAN

Sample No : 02

Report Date : 13/02/2024

Sample Date : 23/12/2023

Haematology-PS Slide Count Qualitative, Lymphocyte., -

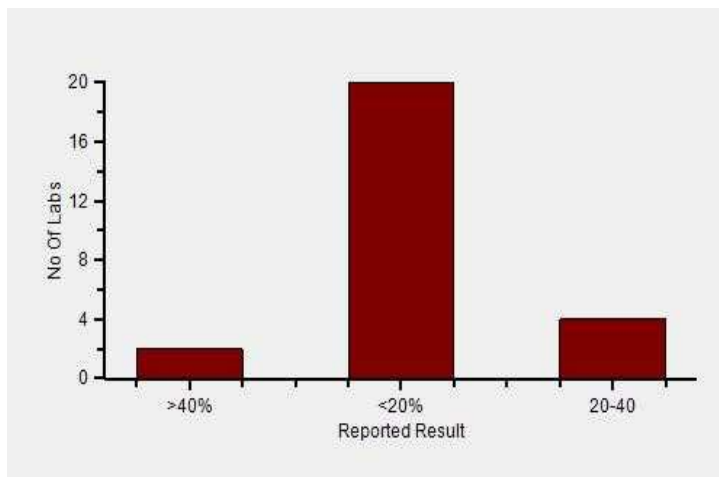
- All Methods
- Microscopy - (Your Method)
- - - (Your Analyzer)

N
42
42
42

Your Result	<20%
Result Expected	<20%

Note : # is an indication that this parameter has not been evaluated

Frequency Histogram



Lab : 1042

Cycle No : 230412

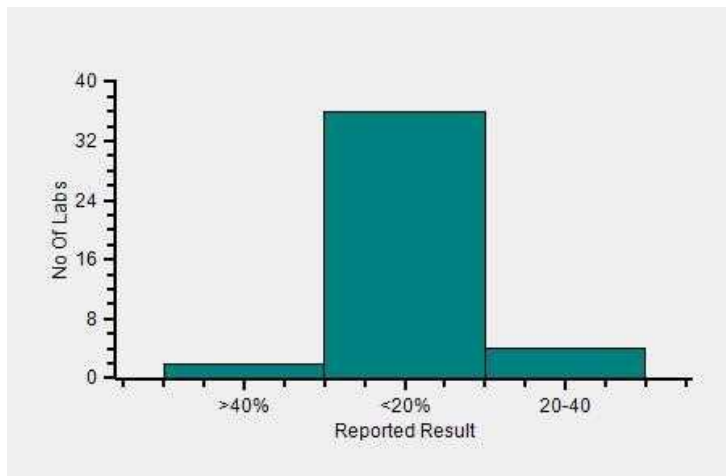
Lab Name : KRSNAA DIAGNOSTICS LTD, TARNTARAN

Sample No : 02

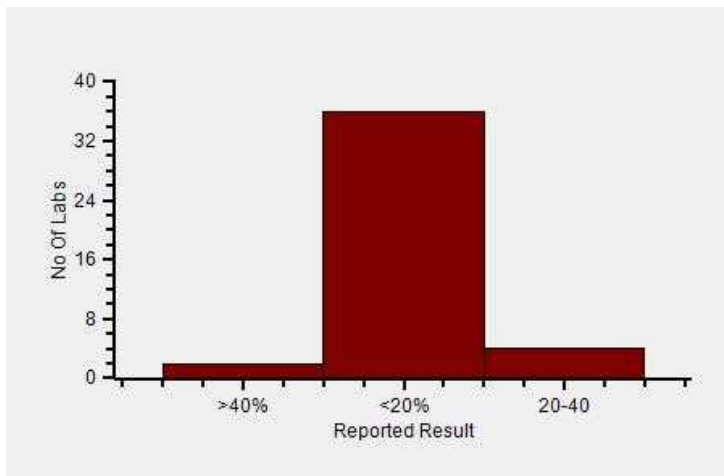
Report Date : 13/02/2024

Sample Date : 23/12/2023

Frequency Histogram Your Method



Frequency Histogram Your Analyzer



Reported Results Legends :-

>40%	: >40%
<20%	: <20%
20-30%	: 20-30%
>25%	: >25%
20-40	: 20-40%
<25%	: <25%
25-50%	: 25-50%

Comments :

Interpretation when an analyte is reported for multiple samples in a Round:

a) Reported on 2 samples:

- Two out of two pass - Acceptable performance
- One out of two pass - Review for random error & take action if appropriate
- Both failed - Unacceptable performance, Review for systematic error

b) Reported on 3 samples:

- All pass - Acceptable performance
- Two out of three pass - Review for random error & take action if appropriate
- One out of three pass - Unacceptable performance, Review for systematic error
- All failed - Unacceptable performance, Review for systematic error



Lab : 1042

Cycle No : 230412

Lab Name : KRSNAA DIAGNOSTICS LTD, TARNTARAN

Sample No : 02

Report Date : 13/02/2024

Sample Date : 23/12/2023

Haematology-PS Slide Count Qualitative, Neutrophil., -

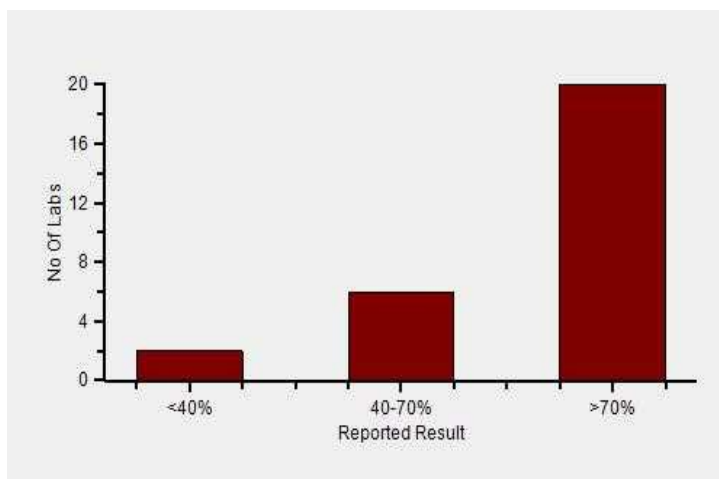
- All Methods
- Microscopy - (Your Method)
- - - (Your Analyzer)

N
42
42
42

Your Result	>70%
Result Expected	>70%

Note : # is an indication that this parameter has not been evaluated

Frequency Histogram



Lab : 1042

Lab Name : KRSNAA DIAGNOSTICS LTD, TARNTARAN

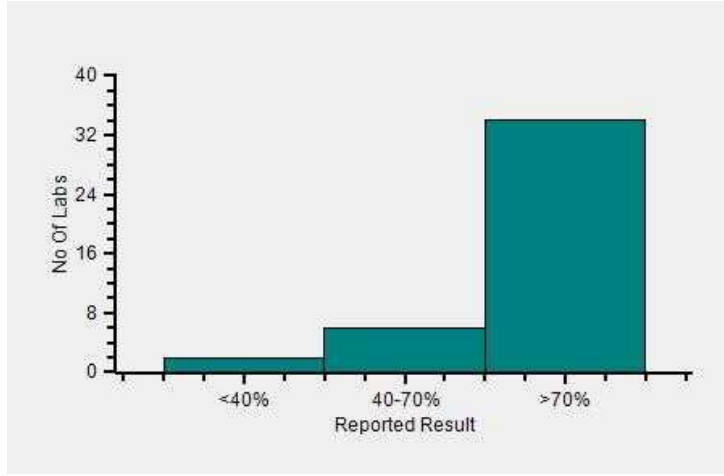
Report Date : 13/02/2024

Cycle No : 230412

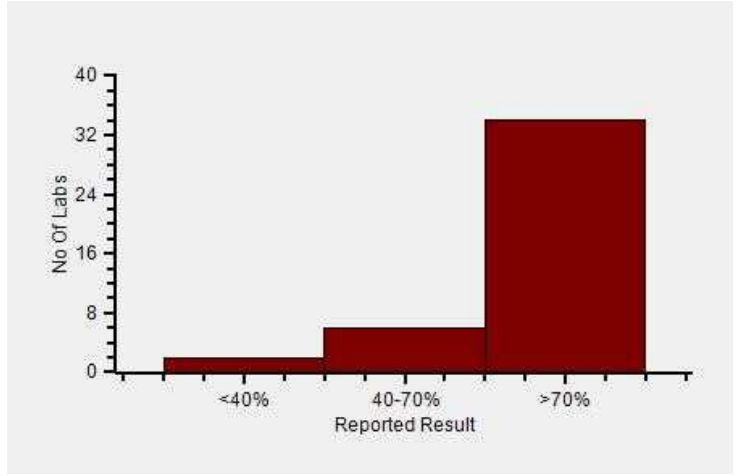
Sample No : 02

Sample Date : 23/12/2023

Frequency Histogram Your Method



Frequency Histogram Your Analyzer



Reported Results Legends :-

60-80%	: 60-80%
<40%	: <40%
40-70%	: 40-70%
>70%	: >70%

Comments :

Interpretation when an analyte is reported for multiple samples in a Round:

a) Reported on 2 samples:

- Two out of two pass - Acceptable performance
- One out of two pass - Review for random error & take action if appropriate
- Both failed - Unacceptable performance, Review for systematic error

b) Reported on 3 samples:

- All pass - Acceptable performance
- Two out of three pass - Review for random error & take action if appropriate
- One out of three pass - Unacceptable performance, Review for systematic error
- All failed - Unacceptable performance, Review for systematic error

Dr Puneet Kumar Nigam

Dr Puneet Kumar Nigam
PT coordinator & Technical Manager, MHL EQAS

Unit No. 409-416.

Commercial Building - 1A
Kohinoor Mall, Kirool Road, Kurla (W),
Mumbai - 400070

This is a computer generated report hence signature
is not required



PC-1022



Metropolis Healthcare Ltd., EQAS

KRSNAA DIAGNOSTICS LTD, TARNTARAN (1042)

Outlier And Analyte Summary Report

Outlier Details For Cycle No 230412 and Sample No 02

Report Date : 13/02/2024

Analyte	Instrument	Result Value	Standard Unit
No Outlier			
Legend @ : Acceptable X : Unacceptable # : Not Evaluated ⌚ : Delayed Result Entry			

Problem Classification: _____

Corrective Action: _____

Reviewed by: _____

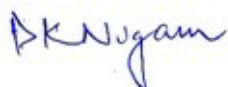
Dated: _____

Instrument : -

Analyte	Standard Unit	Result Value	Accepted Value
@ Neutrophil.	-	>70%	>70%
@ Lymphocyte.	-	<20%	<20%
@ Eosinophil.	-	<6%	<6%

Legend @ : Acceptable
 @ : Acceptable
 X : Unacceptable
 # : Not Evaluated
 ⌚ : Delayed Result Entry

Total Parameters	3
Not Evaluated Parameters	0
Evaluated Parameters	3
Outlier Parameters (X)	0
EQAS Score Haematology-PS Slide Count Qualitative	100.00 %



Dr Puneet Kumar Nigam
 PT coordinator & Technical Manager, MHL EQAS
 Unit No. 409-416.
 Commercial Building - 1A
 Kohinoor Mall, Kiroi Road, Kurla (W),
 Mumbai - 400070