

January - 24
 Calucosa.

Meanvalue - 110 mg/dl
 Range - 100 - 120
 120 - 100 = 20 20/1.5

Month	1st week	2nd week	3rd week	4th week
Jan - 24	110	106	104	115
	108	108	111	

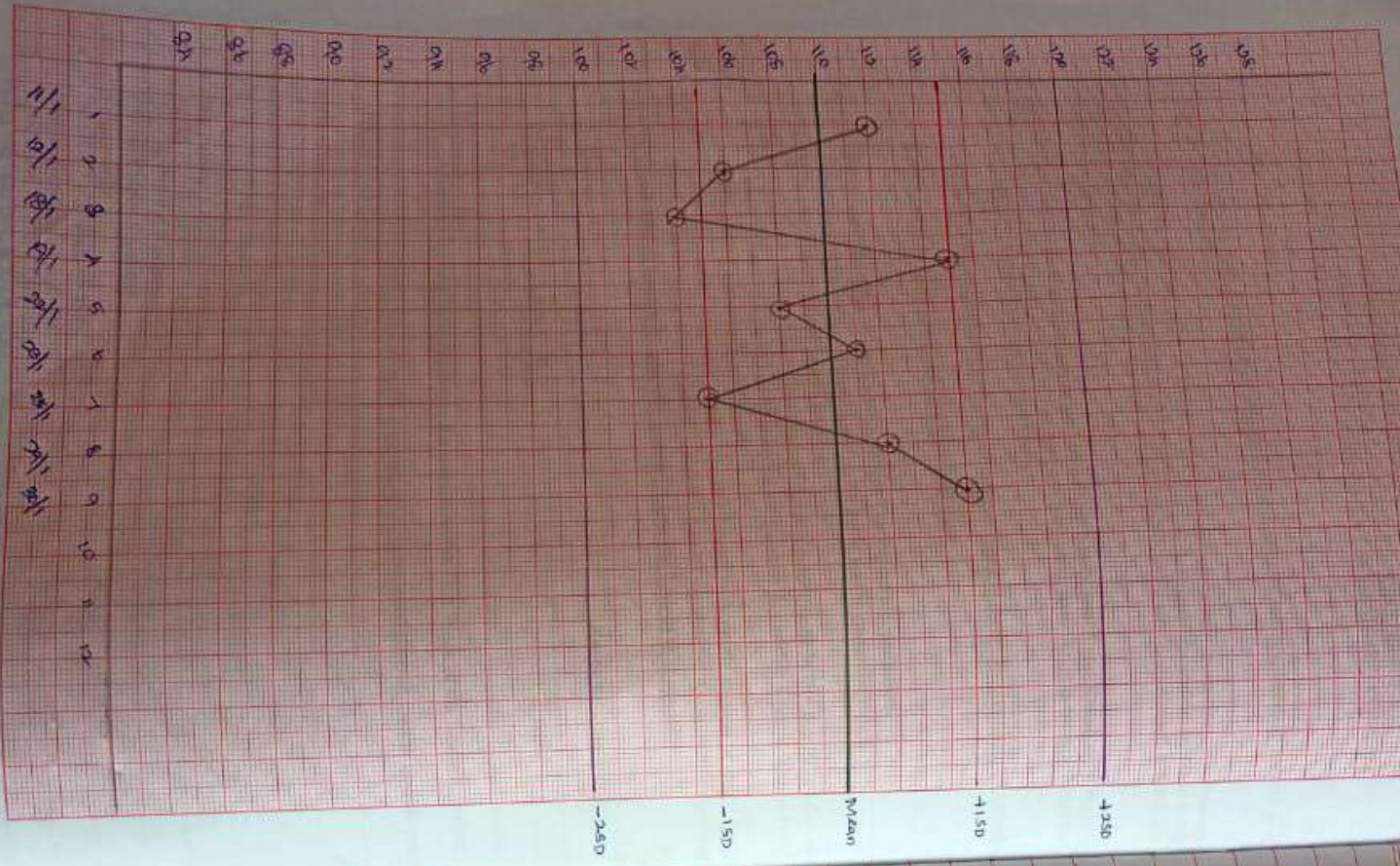
25-1-24	29-1-24	30-1-24		
105	112	115		

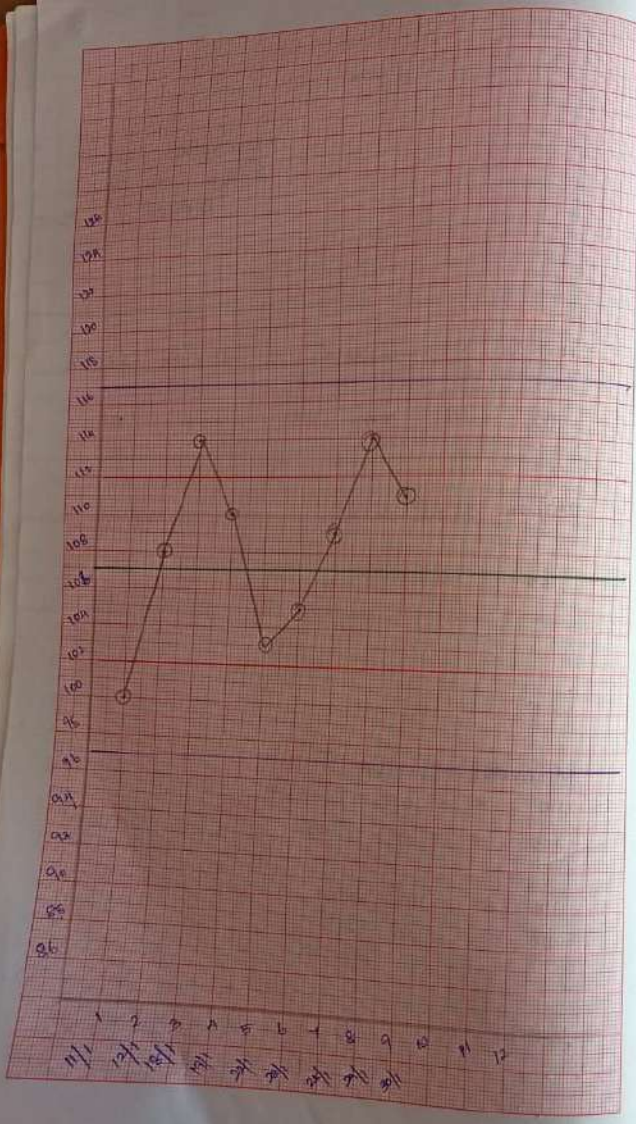
Meanvalue - SDvalue -
 110 - 5 = 105 - 1SD
 105 - 5 = 100 - 2SD

110 + 5 = 115 + 1SD
 115 + 5 = 120 + 2SD

Lab. Technician : - Sg.

MEDICAL OFFICER
 Govt. Primary Health Centre,
 Munsiventri
 Sivagangal Dist.





January - 24
Cholesterol

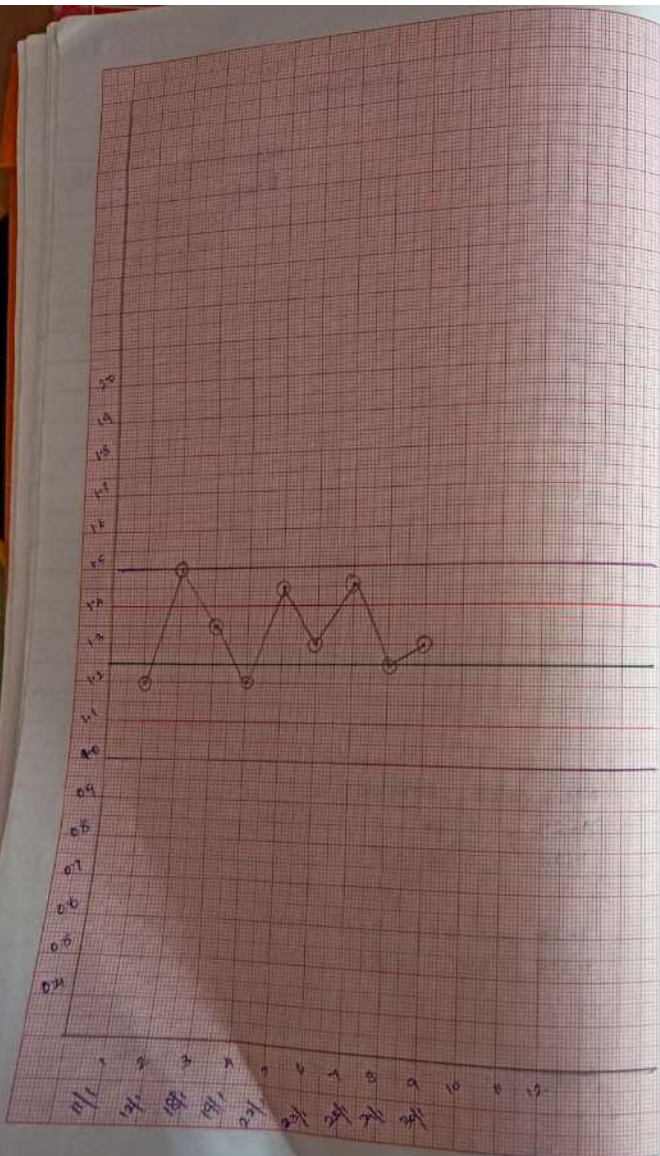
Mean value - 107
Range - 97 - 117
 $117 - 97 = 80 \div 2 = 40$

Month	1st week			2nd week		
	11.1.24	12.1.24	18.1.24	19.1.24	22.1.24	23.1.24
Jan-24	100	108	114	110	103	105.4
	3rd week			4th week		
	25.1.24	29.1.24	30.1.24			
	109	114	111			

Mean value - SD value -
 $107 - 5 = 102 - 1SD$
 $102 - 5 = 97 - 2SD$
 $107 + 5 = 112 + 1SD$
 $112 + 5 = 117 + 2SD$

MEDICAL OFFICER
Govt. Primary Health Centre
Musalvestri
Sivagangal Dist.

Lab. Technician :- S.



January - 2

Creatinine

Mean value = 1.25 mg/dl
 Range = 1.00 - 1.50
 $1.50 - 1.00 = 0.5$
 $0.5 / 4 = 0.125$

I st week			II nd week		
11-1-24	12-1-24	18-1-24	19-1-24	22-1-24	23-1-24
1.2	1.5	1.35	1.2	1.45	1.32
III rd week			IV th week		
25-1-24	29-1-24	30-1-24			
1.45	1.25	1.3			

Mean value - SD value -
 $1.25 - 0.125 = 1.125$
 $1.25 + 0.125 = 1.375$

$1.25 + 0.125 = 1.375$
 $1.375 - 0.125 = 1.25$

MEDICAL OFFICER
 Govt. Primary Health C.
 Munalventri
 Sivagangal Dist

Lab. Technician :- *[Signature]*