

Lab : 856

Cycle No : 230412

Lab Name : CLINICAL BIOCHEMISTRY LABORATORY

Sample No : 01

Report Date : 13/02/2024

Sample Date : 23/12/2023

Biochemistry, Albumin, g/dL

Comparative Statistics

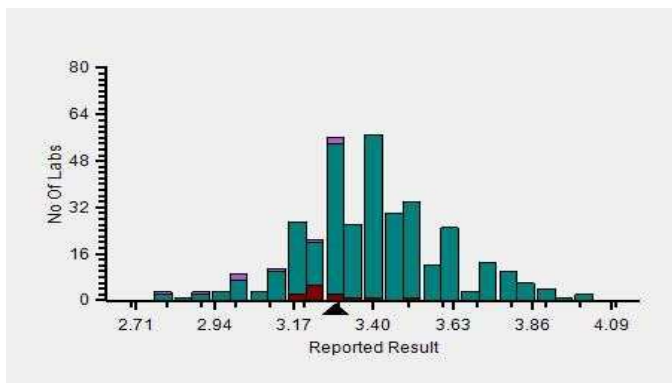
	N	Mean	SD	CV%	Excluded
All Methods	353	3.39	0.22	6.54	2
Bromocresol Green (BCG) - (Your Method)	355	3.40	0.22	6.41	2
Beckman Coulter DxC 700 AU - (Your Analyzer)	12	3.27	0.10	2.96	--

Your Result	3.29	SDI / z-Score	-0.26
Assigned Value	3.37	Average SDI	-0.21
SDPA	0.289	Uncertainty of AV	0.03
Standard Unit Result Val	3.29	%DEV	0.52

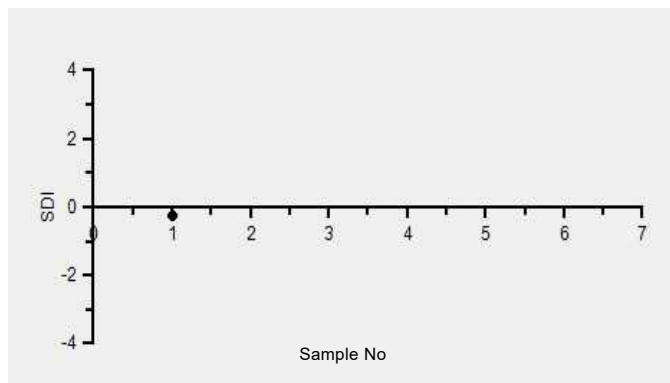
Note : # - Not evaluated / Bimodal distribution

X : SDI more than 4

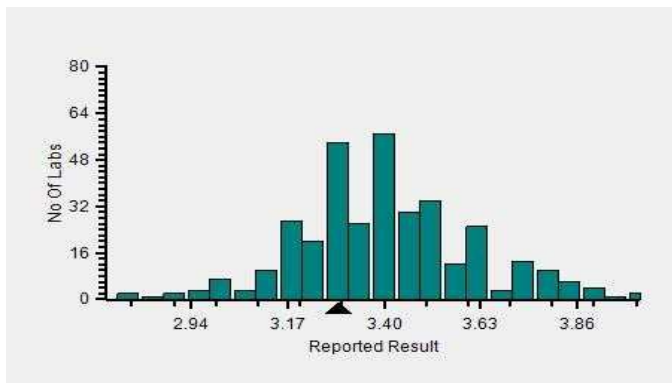
Frequency Histogram



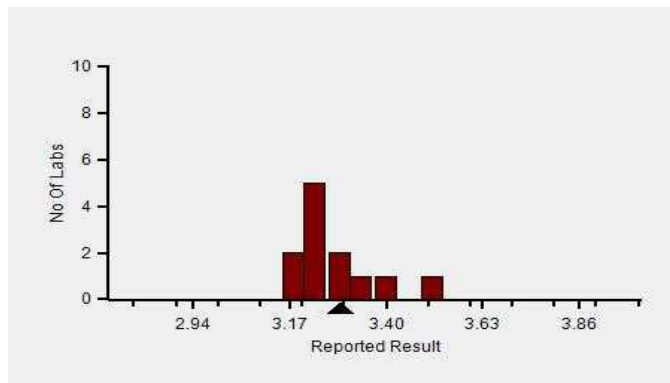
Z-Score Trend - Within Round



Frequency Histogram Your Method



Frequency Histogram Your Analyzer



Lab : 856

Cycle No : 230412

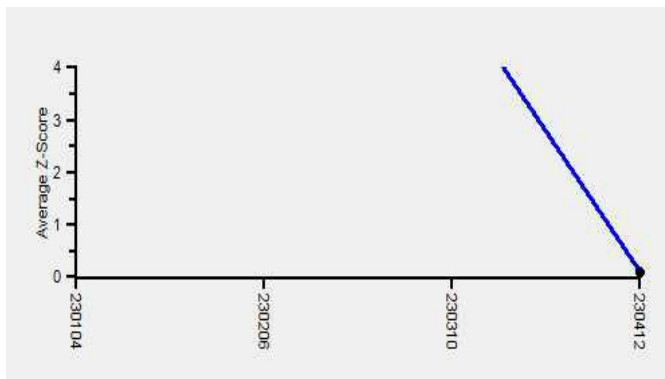
Lab Name : CLINICAL BIOCHEMISTRY LABORATORY

Sample No : 01

Report Date : 13/02/2024

Sample Date : 23/12/2023

Frequency Histogram Your Method



Note : SDI with * marked are not considered for evaluation

Comments :

Biochemistry, Albumin		N	Mean	SD	CV%	Excluded
	All Analyzer	353	3.39	0.22	6.54	2
Your Analyzer :	Beckman Coulter DxC 700 AU	12	3.27	0.10	2.96	-
	Erba EM 200	42	3.38	0.16	4.67	-
	Erba EM 200	41	3.38	0.16	4.70	-
	Roche cobas c 311	39	3.35	0.14	4.21	-
	Roche cobas c 311	38	3.35	0.14	4.27	-
	Fuji Dri-Chem NX500/i	30	3.48	0.26	7.55	-
	Diasys 200 Pro	25	3.62	0.30	8.34	1
	Roche cobas c 111	24	3.40	0.15	4.44	-

Remarks: Interpretation of your reports

- a) If your SDI lies between +/- 2.0 SDI then your results are well within limits.
- b) If your SDI lies between +/-2.0 to 2.99 SDI then it is a warning alert flag.
- c) If your SDI is +/- 3.0 SDI or more then it is an action alert flag.

Interpretation when an analyte is reported for multiple samples in a Round:

- a) Reported on 2 samples:
 - Two out of two pass - Acceptable performance
 - One out of two pass - Review for random error & take action if appropriate
 - Both failed - Unacceptable performance, Review for systematic error
- b) Reported on 3 samples:
 - All pass - Acceptable performance
 - Two out of three pass - Review for random error & take action if appropriate
 - One out of three pass - Unacceptable performance, Review for systematic error
 - All failed - Unacceptable performance, Review for systematic error



Lab : 856

Cycle No : 230412

Lab Name : CLINICAL BIOCHEMISTRY LABORATORY

Sample No : 01

Report Date : 13/02/2024

Sample Date : 23/12/2023

Biochemistry, ALP, U/L

Comparative Statistics

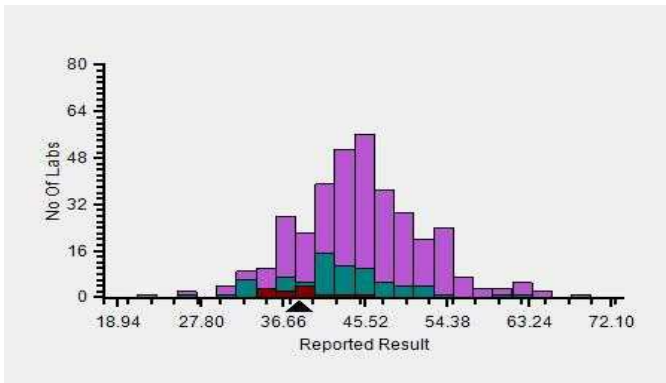
	N	Mean	SD	CV%	Excluded
All Methods	349	45.54	8.84	19.42	9
IFCC - (Your Method)	77	42.59	6.51	15.28	5
Beckman Coulter DxC 700 AU - (Your Analyzer)	12	38.76	3.29	8.48	--

Evaluation Based On - Method wise Peer Grouping

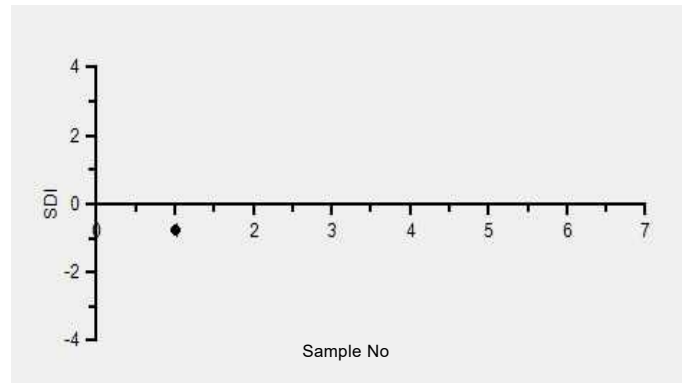
Your Result	38.50	SDI / z-Score	-0.78
Assigned Value	44.79	Average SDI	-0.66
SDPA	8.100	Uncertainty of AV	0.40
Standard Unit Result Val	38.50	%DEV	-0.68

Note : # - Not evaluated / Bimodal distribution
X : SDI more than 4

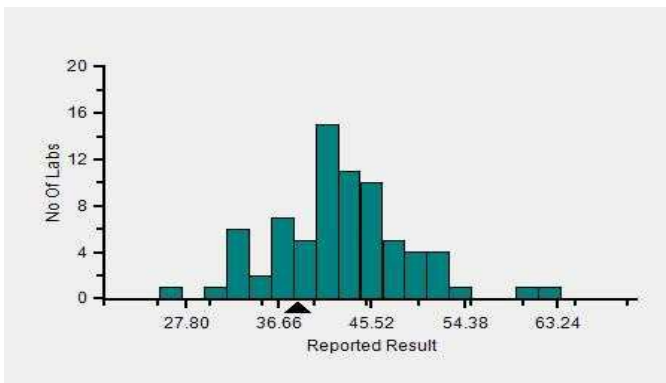
Frequency Histogram



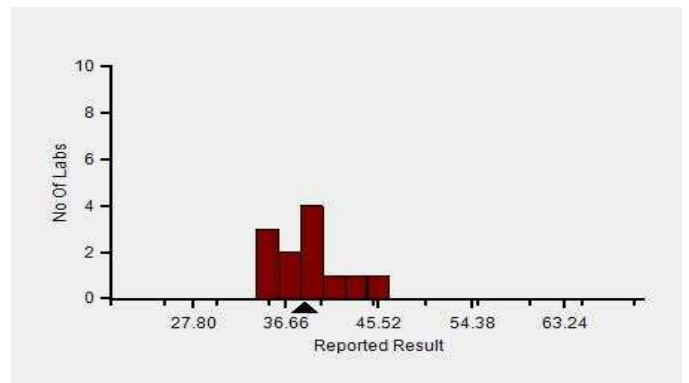
Z-Score Trend - Within Round



Frequency Histogram Your Method



Frequency Histogram Your Analyzer



Lab : 856

Cycle No : 230412

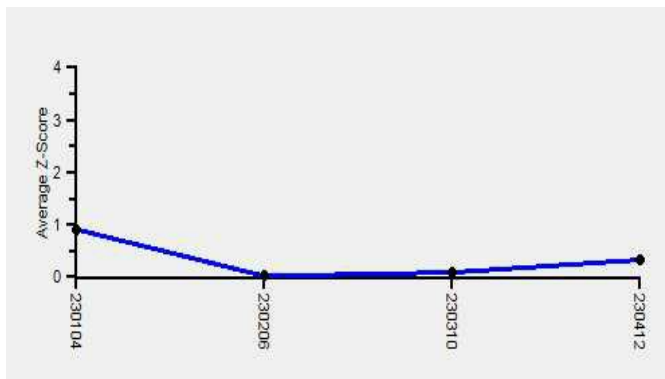
Lab Name : CLINICAL BIOCHEMISTRY LABORATORY

Sample No : 01

Report Date : 13/02/2024

Sample Date : 23/12/2023

Frequency Histogram Your Method



Note : SDI with * marked are not considered for evaluation

Comments :

Biochemistry, ALP		N	Mean	SD	CV%	Excluded
	All Analyzer	349	45.54	8.84	19.42	9
Your Analyzer :	Beckman Coulter DxC 700 AU	12	38.76	3.29	8.48	-
	Erba EM 200	41	45.57	6.76	14.83	2
	Erba EM 200	40	45.48	6.82	15.01	2
	Roche cobas c 311	38	46.68	4.23	9.05	-
	Roche cobas c 311	37	46.81	4.21	9.00	-
	Fuji Dri-Chem NX500/i	31	47.32	7.45	15.73	-
	Fuji Dri-Chem NX500/i	30	47.20	7.54	15.98	-
	Diasys 200 Pro	25	42.48	7.82	18.42	1

Remarks: Interpretation of your reports

- a) If your SDI lies between +/- 2.0 SDI then your results are well within limits.
- b) If your SDI lies between +/-2.0 to 2.99 SDI then it is a warning alert flag.
- c) If your SDI is +/- 3.0 SDI or more then it is an action alert flag.

Interpretation when an analyte is reported for multiple samples in a Round:

- a) Reported on 2 samples:
 - Two out of two pass - Acceptable performance
 - One out of two pass - Review for random error & take action if appropriate
 - Both failed - Unacceptable performance, Review for systematic error
- b) Reported on 3 samples:
 - All pass - Acceptable performance
 - Two out of three pass - Review for random error & take action if appropriate
 - One out of three pass - Unacceptable performance, Review for systematic error
 - All failed - Unacceptable performance, Review for systematic error



Lab : 856

Cycle No : 230412

Lab Name : CLINICAL BIOCHEMISTRY LABORATORY

Sample No : 01

Report Date : 13/02/2024

Sample Date : 23/12/2023

Biochemistry, ALT, U/L

Comparative Statistics

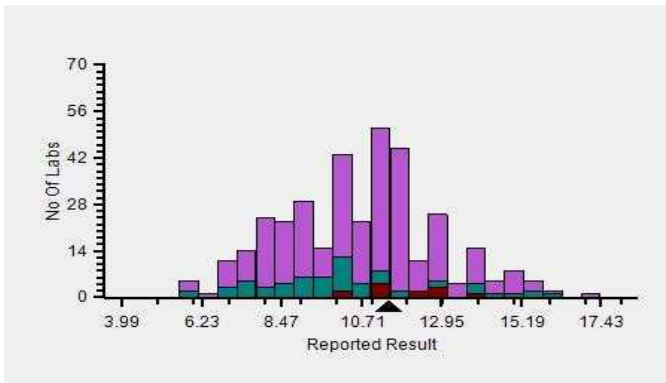
	N	Mean	SD	CV%	Excluded
All Methods	355	10.70	2.25	21.01	10
IFCC - UV without P5P - (Your Method)	70	10.35	2.34	22.60	1
Beckman Coulter DxC 700 AU - (Your Analyzer)	12	11.87	1.24	10.45	--

Evaluation Based On - Equipment wise Peer Grouping

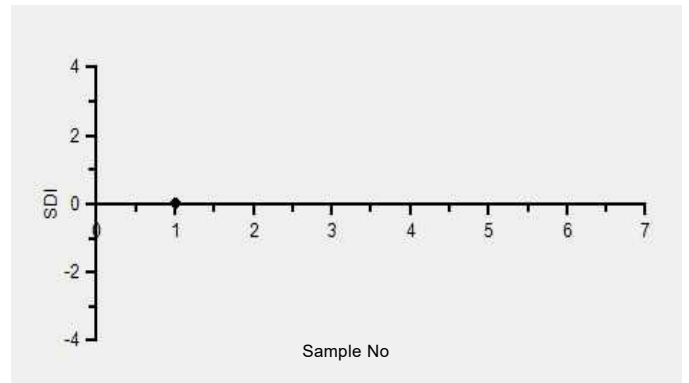
Your Result	11.50	SDI / z-Score	0.03
Assigned Value	11.47	Average SDI	0.03
SDPA	1.235	Uncertainty of AV	0.32
Standard Unit Result Val	11.50	%DEV	-3.08

Note : # - Not evaluated / Bimodal distribution
X : SDI more than 4

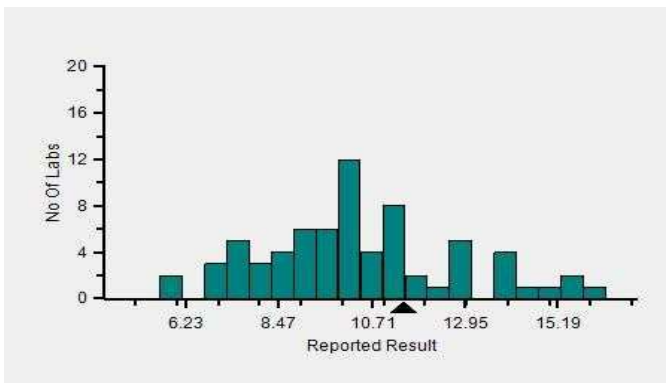
Frequency Histogram



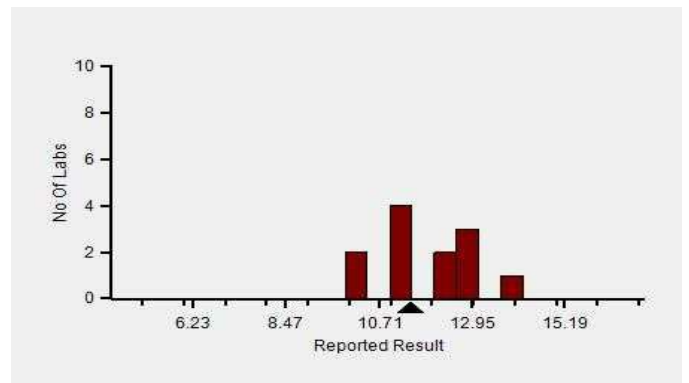
Z-Score Trend - Within Round



Frequency Histogram Your Method



Frequency Histogram Your Analyzer



Lab : 856

Cycle No : 230412

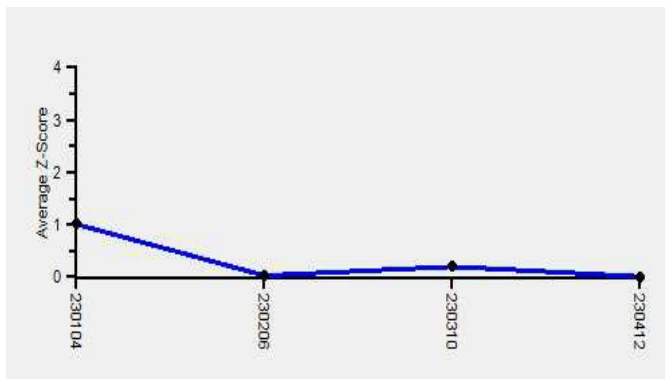
Lab Name : CLINICAL BIOCHEMISTRY LABORATORY

Sample No : 01

Report Date : 13/02/2024

Sample Date : 23/12/2023

Frequency Histogram Your Method



Note : SDI with * marked are not considered for evaluation

Comments :

Biochemistry, ALT		N	Mean	SD	CV%	Excluded
	All Analyzer	355	10.70	2.25	21.01	10
Your Analyzer :	Beckman Coulter DxC 700 AU	12	11.87	1.24	10.45	-
	Erba EM 200	43	9.38	2.07	22.04	1
	Erba EM 200	42	9.42	2.08	22.14	1
	Roche cobas c 311	38	10.61	1.87	17.64	-
	Roche cobas c 311	37	10.61	1.87	17.64	-
	Fuji Dri-Chem NX500/i	30	12.53	1.43	11.43	-
	Fuji Dri-Chem NX500/i	29	12.62	1.37	10.89	-
	Diasys 200 Pro	25	11.68	1.81	15.47	1

Remarks: Interpretation of your reports

- a) If your SDI lies between +/- 2.0 SDI then your results are well within limits.
- b) If your SDI lies between +/-2.0 to 2.99 SDI then it is a warning alert flag.
- c) If your SDI is +/- 3.0 SDI or more then it is an action alert flag.

Interpretation when an analyte is reported for multiple samples in a Round:

a) Reported on 2 samples:

- Two out of two pass - Acceptable performance
- One out of two pass - Review for random error & take action if appropriate
- Both failed - Unacceptable performance, Review for systematic error

b) Reported on 3 samples:

- All pass - Acceptable performance
- Two out of three pass - Review for random error & take action if appropriate
- One out of three pass - Unacceptable performance, Review for systematic error
- All failed - Unacceptable performance, Review for systematic error



Lab : 856

Cycle No : 230412

Lab Name : CLINICAL BIOCHEMISTRY LABORATORY

Sample No : 01

Report Date : 13/02/2024

Sample Date : 23/12/2023

Biochemistry, Amylase, U/L

Comparative Statistics

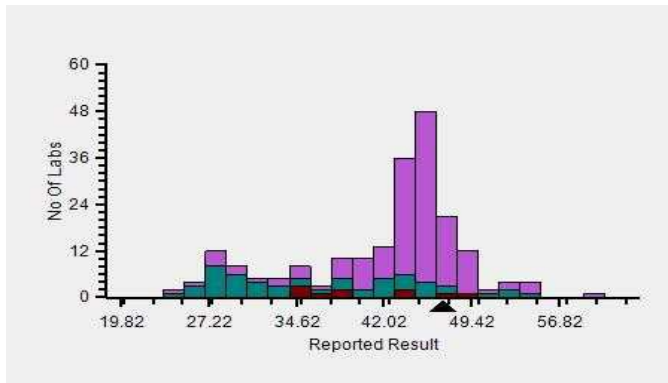
	N	Mean	SD	CV%	Excluded
All Methods	200	41.83	7.31	17.48	3
CNP-triose/CNPG3 - (Your Method)	63	37.20	8.00	21.52	1
Beckman Coulter DxC 700 AU - (Your Analyzer)	10	40.18	5.29	13.17	--

Evaluation Based On - Equipment wise Peer Grouping

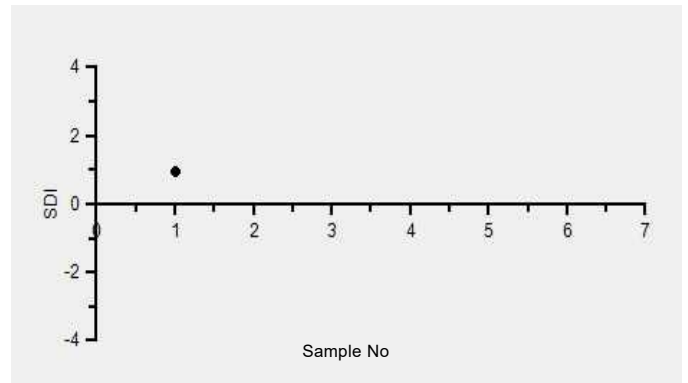
Your Result	47.00	SDI / z-Score	0.94
Assigned Value	40.90	Average SDI	1.45
SDPA	6.474	Uncertainty of AV	1.59
Standard Unit Result Val	47.00	%DEV	16.98

Note : # - Not evaluated / Bimodal distribution
X : SDI more than 4

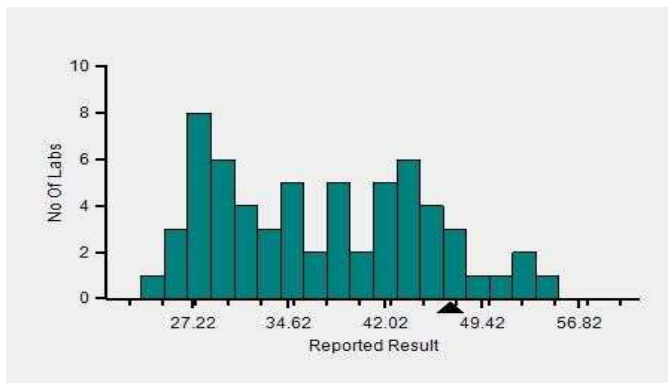
Frequency Histogram



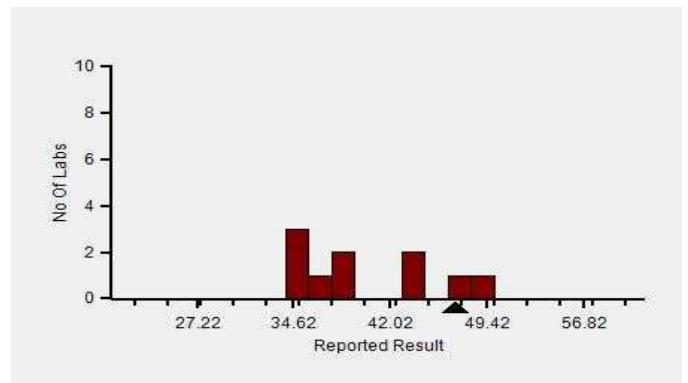
Z-Score Trend - Within Round



Frequency Histogram Your Method



Frequency Histogram Your Analyzer



Lab : 856

Cycle No : 230412

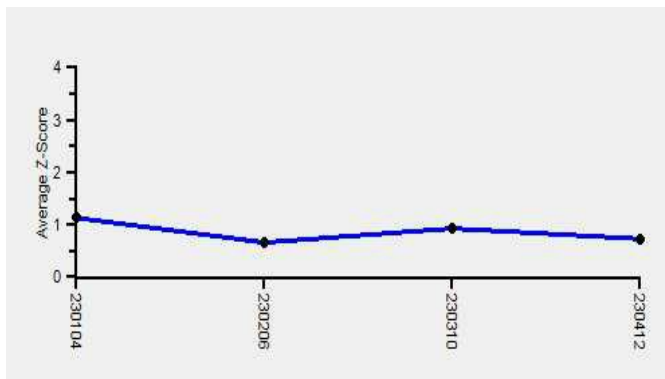
Lab Name : CLINICAL BIOCHEMISTRY LABORATORY

Sample No : 01

Report Date : 13/02/2024

Sample Date : 23/12/2023

Frequency Histogram Your Method



Note : SDI with * marked are not considered for evaluation

Comments :

Biochemistry, Amylase		N	Mean	SD	CV%	Excluded
	All Analyzer	200	41.83	7.31	17.48	3
Your Analyzer :	Beckman Coulter DxC 700 AU	10	40.18	5.29	13.17	-
	Fuji Dri-Chem NX500/i	30	45.60	3.27	7.16	-
	Erba EM 200	20	30.84	5.71	18.51	1
	Roche cobas c 311	20	44.84	2.16	4.82	-
	Roche cobas c 311	19	44.72	2.16	4.83	-
	Fuji Dri-Chem 4000i	12	44.67	2.27	5.08	-
	Roche cobas 6000	10	44.04	1.40	3.18	-
	Roche cobas c 111	8	44.39	3.79	8.53	-

Remarks: Interpretation of your reports

- a) If your SDI lies between +/- 2.0 SDI then your results are well within limits.
- b) If your SDI lies between +/-2.0 to 2.99 SDI then it is a warning alert flag.
- c) If your SDI is +/- 3.0 SDI or more then it is an action alert flag.

Interpretation when an analyte is reported for multiple samples in a Round:

- a) Reported on 2 samples:
 - Two out of two pass - Acceptable performance
 - One out of two pass - Review for random error & take action if appropriate
 - Both failed - Unacceptable performance, Review for systematic error
- b) Reported on 3 samples:
 - All pass - Acceptable performance
 - Two out of three pass - Review for random error & take action if appropriate
 - One out of three pass - Unacceptable performance, Review for systematic error
 - All failed - Unacceptable performance, Review for systematic error



Lab : 856

Cycle No : 230412

Lab Name : CLINICAL BIOCHEMISTRY LABORATORY

Sample No : 01

Report Date : 13/02/2024

Sample Date : 23/12/2023

Biochemistry, AST, U/L

Comparative Statistics

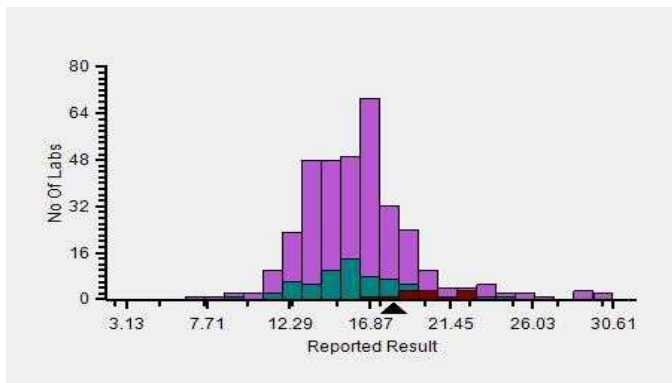
	N	Mean	SD	CV%	Excluded
All Methods	354	16.88	4.54	26.87	16
IFCC - UV without P5P - (Your Method)	66	16.40	3.62	22.09	2
Beckman Coulter DxC 700 AU - (Your Analyzer)	12	19.87	1.79	9.01	--

Evaluation Based On - Equipment wise Peer Grouping

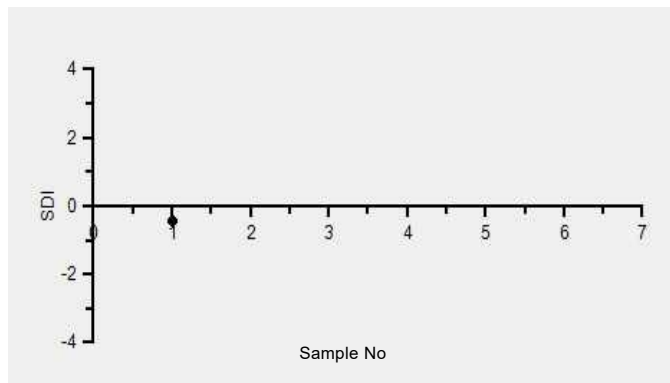
Your Result	18.20	SDI / z-Score	-0.44
Assigned Value	19.47	Average SDI	-0.44
SDPA	2.870	Uncertainty of AV	0.51
Standard Unit Result Val	18.20	%DEV	-8.41

Note : # - Not evaluated / Bimodal distribution
X : SDI more than 4

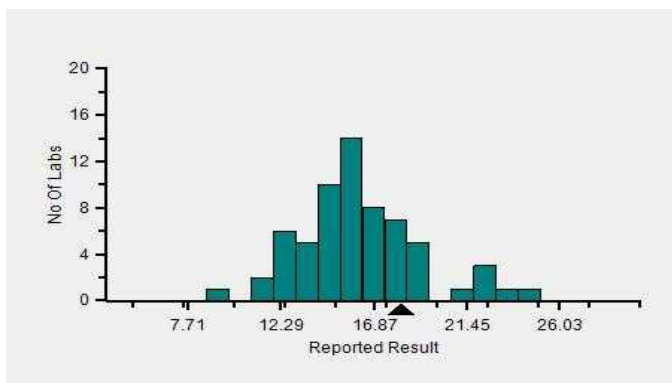
Frequency Histogram



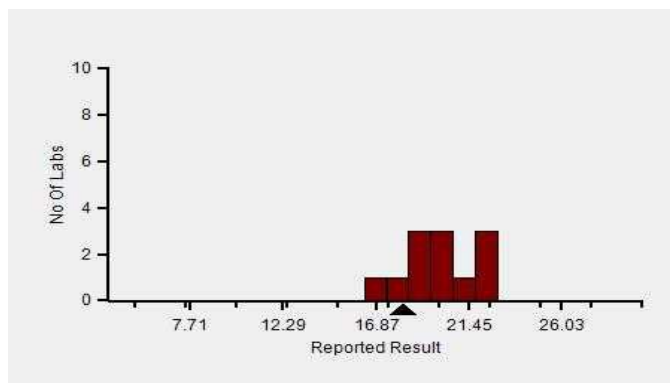
Z-Score Trend - Within Round



Frequency Histogram Your Method



Frequency Histogram Your Analyzer



Lab : 856

Cycle No : 230412

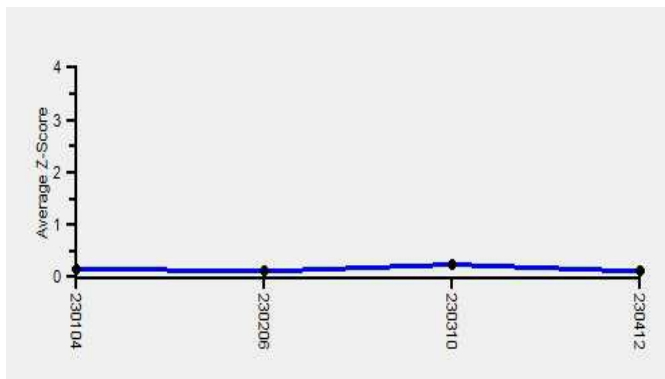
Lab Name : CLINICAL BIOCHEMISTRY LABORATORY

Sample No : 01

Report Date : 13/02/2024

Sample Date : 23/12/2023

Frequency Histogram Your Method



Note : SDI with * marked are not considered for evaluation

Comments :

Biochemistry, AST		N	Mean	SD	CV%	Excluded
	All Analyzer	354	16.88	4.54	26.87	16
Your Analyzer :	Beckman Coulter DxC 700 AU	12	19.87	1.79	9.01	-
	Erba EM 200	42	14.89	2.99	20.06	1
	Erba EM 200	41	14.83	3.00	20.23	1
	Roche cobas c 311	37	15.78	1.72	10.88	-
	Roche cobas c 311	36	15.73	1.71	10.89	-
	Fuji Dri-Chem NX500/i	30	17.12	0.82	4.77	4
	Fuji Dri-Chem NX500/i	29	17.12	0.83	4.87	4
	Roche cobas c 111	25	14.32	1.66	11.56	1

Remarks: Interpretation of your reports

- a) If your SDI lies between +/- 2.0 SDI then your results are well within limits.
- b) If your SDI lies between +/-2.0 to 2.99 SDI then it is a warning alert flag.
- c) If your SDI is +/- 3.0 SDI or more then it is an action alert flag.

Interpretation when an analyte is reported for multiple samples in a Round:

- a) Reported on 2 samples:
 - Two out of two pass - Acceptable performance
 - One out of two pass - Review for random error & take action if appropriate
 - Both failed - Unacceptable performance, Review for systematic error
- b) Reported on 3 samples:
 - All pass - Acceptable performance
 - Two out of three pass - Review for random error & take action if appropriate
 - One out of three pass - Unacceptable performance, Review for systematic error
 - All failed - Unacceptable performance, Review for systematic error



Lab : 856

Cycle No : 230412

Lab Name : CLINICAL BIOCHEMISTRY LABORATORY

Sample No : 01

Report Date : 13/02/2024

Sample Date : 23/12/2023

Biochemistry, Bilirubin Total, mg/dl

Comparative Statistics

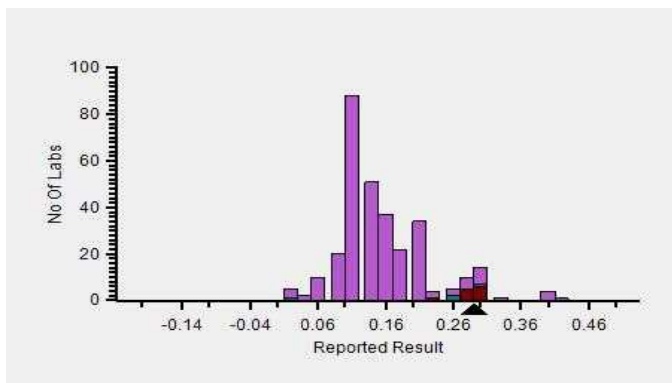
	N	Mean	SD	CV%	Excluded
All Methods	350	0.16	0.10	60.90	52
DPD - (Your Method)	17	0.29	0.12	40.56	--
Beckman Coulter DxC 700 AU - (Your Analyzer)	12	0.28	0.02	7.09	--

Your Result	0.29	SDI / z-Score	0.11
Assigned Value	0.28	Average SDI	0.26
SDPA	0.057	Uncertainty of AV	0.01
Standard Unit Result Val	0.29	%DEV	2.84

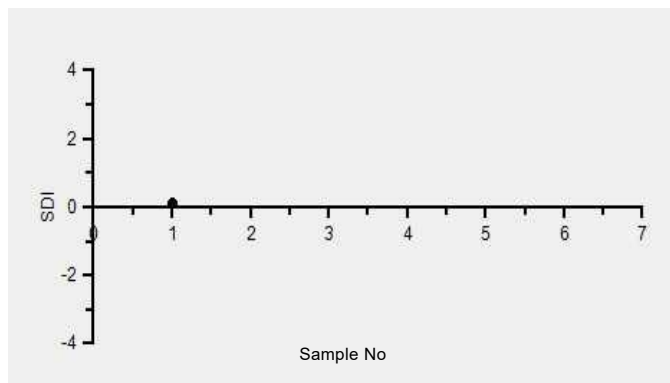
Note : # - Not evaluated / Bimodal distribution

X : SDI more than 4

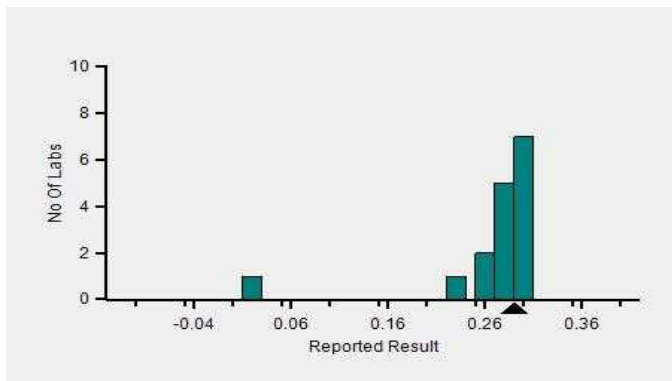
Frequency Histogram



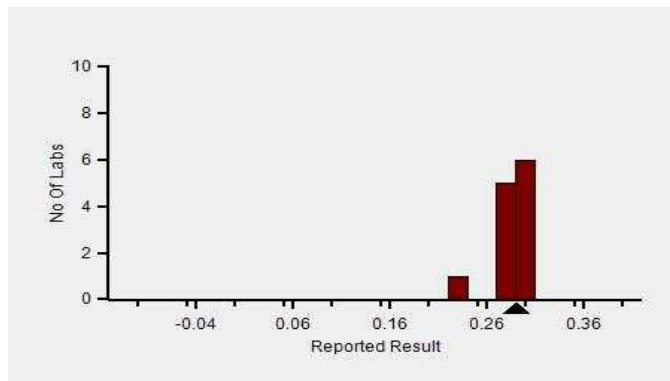
Z-Score Trend - Within Round



Frequency Histogram Your Method



Frequency Histogram Your Analyzer



Lab : 856

Cycle No : 230412

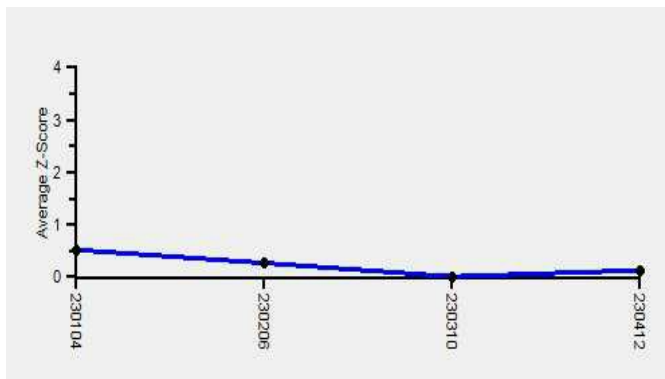
Lab Name : CLINICAL BIOCHEMISTRY LABORATORY

Sample No : 01

Report Date : 13/02/2024

Sample Date : 23/12/2023

Frequency Histogram Your Method



Note : SDI with * marked are not considered for evaluation

Comments :

Biochemistry, Bilirubin Total		N	Mean	SD	CV%	Excluded
	All Analyzer	350	0.16	0.10	60.51	52
Your Analyzer :	Beckman Coulter DxC 700 AU	12	0.28	0.02	7.09	-
	Erba EM 200	41	0.13	0.04	29.55	2
	Erba EM 200	40	0.13	0.04	29.55	2
	Roche cobas c 311	38	0.12	0.03	27.87	2
	Roche cobas c 311	37	0.12	0.04	28.69	2
	Fuji Dri-Chem NX500/i	29	0.15	0.05	33.11	3
	Diasys 200 Pro	25	0.63	0.00	0.00	24
	Diasys 200 Pro	24	-	-	-	24

Remarks: Interpretation of your reports

- a) If your SDI lies between +/- 2.0 SDI then your results are well within limits.
- b) If your SDI lies between +/-2.0 to 2.99 SDI then it is a warning alert flag.
- c) If your SDI is +/- 3.0 SDI or more then it is an action alert flag.

Interpretation when an analyte is reported for multiple samples in a Round:

- a) Reported on 2 samples:
 - Two out of two pass - Acceptable performance
 - One out of two pass - Review for random error & take action if appropriate
 - Both failed - Unacceptable performance, Review for systematic error
- b) Reported on 3 samples:
 - All pass - Acceptable performance
 - Two out of three pass - Review for random error & take action if appropriate
 - One out of three pass - Unacceptable performance, Review for systematic error
 - All failed - Unacceptable performance, Review for systematic error



Lab : 856

Cycle No : 230412

Lab Name : CLINICAL BIOCHEMISTRY LABORATORY

Sample No : 01

Report Date : 13/02/2024

Sample Date : 23/12/2023

Biochemistry, Calcium, mg/dl

Comparative Statistics

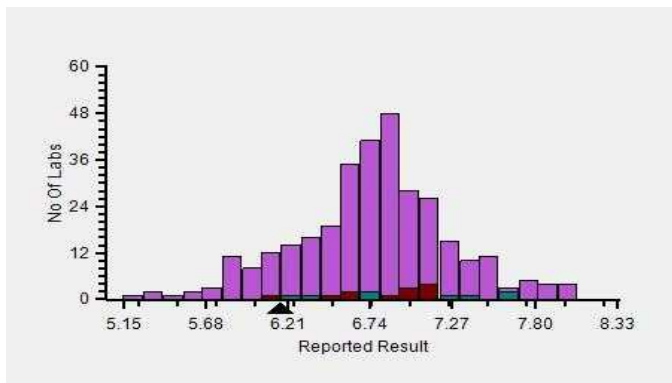
	N	Mean	SD	CV%	Excluded
All Methods	322	6.74	0.53	7.92	5
o-cresolphthalein complexone - (Your Method)	19	6.94	0.55	7.97	2
Beckman Coulter DxC 700 AU - (Your Analyzer)	12	6.85	0.32	4.73	--

Evaluation Based On - Equipment wise Peer Grouping

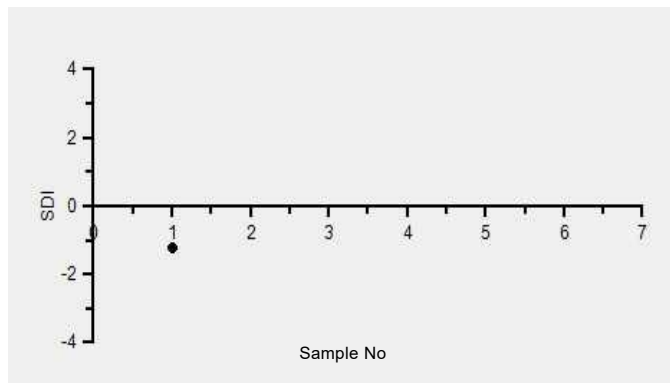
Your Result	6.16	SDI / z-Score	-1.22
Assigned Value	6.83	Average SDI	-0.73
SDPA	0.550	Uncertainty of AV	0.04
Standard Unit Result Val	6.16	%DEV	-10.10

Note : # - Not evaluated / Bimodal distribution
X : SDI more than 4

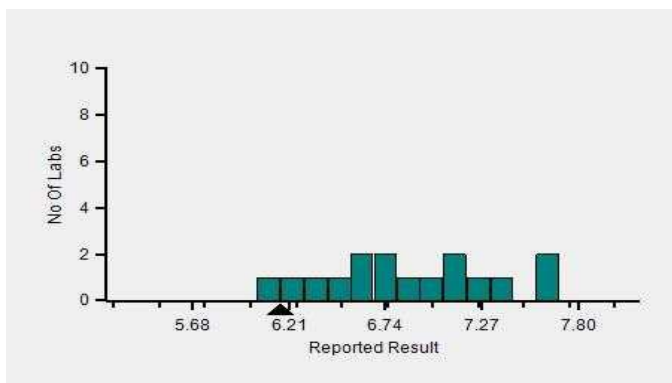
Frequency Histogram



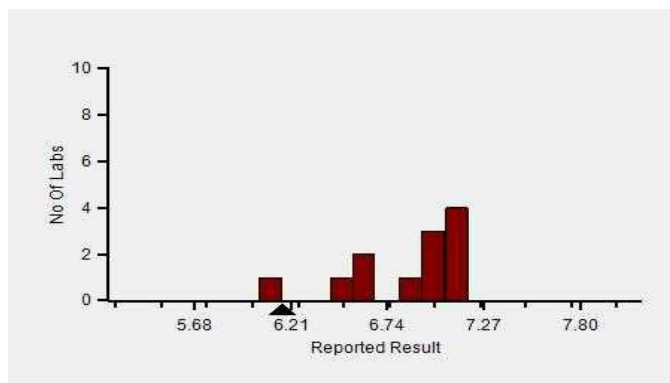
Z-Score Trend - Within Round



Frequency Histogram Your Method



Frequency Histogram Your Analyzer



Lab : 856

Cycle No : 230412

Lab Name : CLINICAL BIOCHEMISTRY LABORATORY

Sample No : 01

Report Date : 13/02/2024

Sample Date : 23/12/2023

Frequency Histogram Your Method



Note : SDI with * marked are not considered for evaluation

Comments :

Biochemistry, Calcium		N	Mean	SD	CV%	Excluded
	All Analyzer	322	6.74	0.53	7.92	5
Your Analyzer :	Beckman Coulter DxC 700 AU	12	6.85	0.32	4.73	-
	Roche cobas c 311	39	6.79	0.28	4.10	-
	Roche cobas c 311	38	6.79	0.28	4.14	-
	Erba EM 200	36	6.93	0.53	7.69	2
	Fuji Dri-Chem NX500/i	26	6.09	0.50	8.26	-
	Diasys 200 Pro	24	6.84	0.69	10.14	-
	Roche cobas c 111	19	6.73	0.41	6.05	-
	Erba XL-200	13	6.92	0.61	8.85	-

Remarks: Interpretation of your reports

- a) If your SDI lies between +/- 2.0 SDI then your results are well within limits.
- b) If your SDI lies between +/-2.0 to 2.99 SDI then it is a warning alert flag.
- c) If your SDI is +/- 3.0 SDI or more then it is an action alert flag.

Interpretation when an analyte is reported for multiple samples in a Round:

a) Reported on 2 samples:

- Two out of two pass - Acceptable performance
- One out of two pass - Review for random error & take action if appropriate
- Both failed - Unacceptable performance, Review for systematic error

b) Reported on 3 samples:

- All pass - Acceptable performance
- Two out of three pass - Review for random error & take action if appropriate
- One out of three pass - Unacceptable performance, Review for systematic error
- All failed - Unacceptable performance, Review for systematic error



Lab : 856

Cycle No : 230412

Lab Name : CLINICAL BIOCHEMISTRY LABORATORY

Sample No : 01

Report Date : 13/02/2024

Sample Date : 23/12/2023

Biochemistry, Chloride, mEq/L

Comparative Statistics

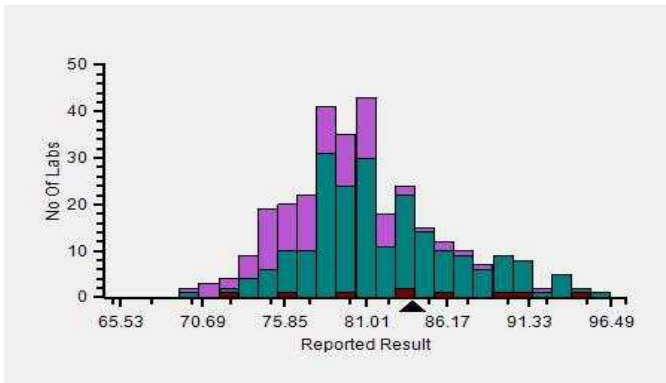
	N	Mean	SD	CV%	Excluded
All Methods	310	81.04	5.22	6.44	7
ISE direct - (Your Method)	218	82.21	5.24	6.37	3
ST 200 plus Electrolyte analyser - (Your Analyzer)	9	84.27	7.12	8.45	--

Evaluation Based On - Method wise Peer Grouping

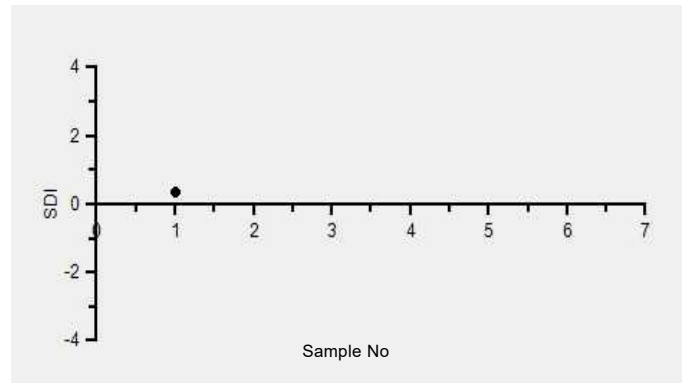
Your Result	84.00	SDI / z-Score	0.33
Assigned Value	82.08	Average SDI	0.13
SDPA	5.760	Uncertainty of AV	0.43
Standard Unit Result Val	84.00	%DEV	-0.32

Note : # - Not evaluated / Bimodal distribution
X : SDI more than 4

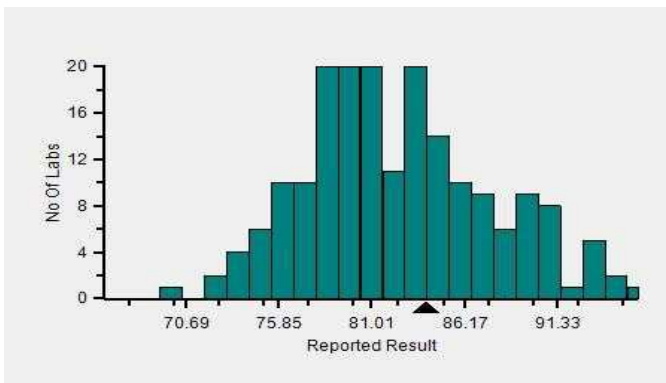
Frequency Histogram



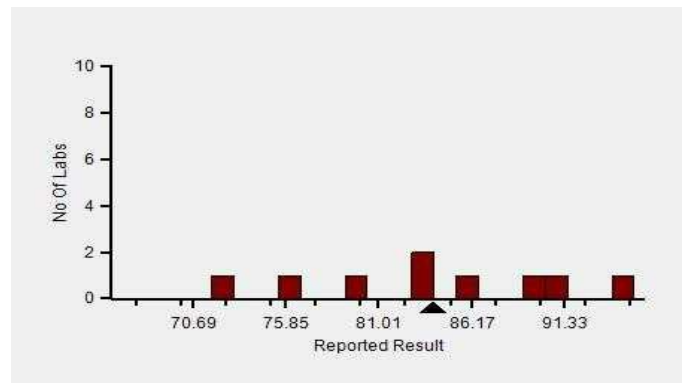
Z-Score Trend - Within Round



Frequency Histogram Your Method



Frequency Histogram Your Analyzer



Lab : 856

Cycle No : 230412

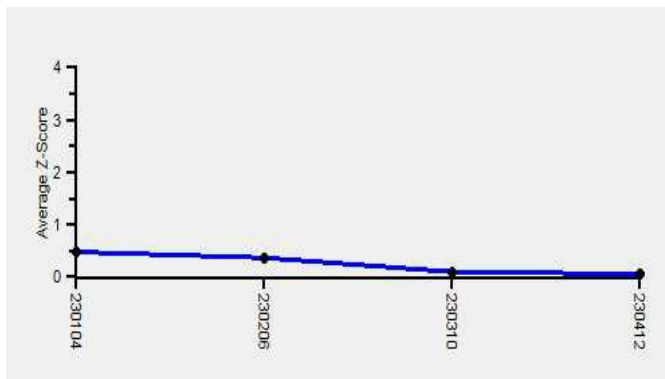
Lab Name : CLINICAL BIOCHEMISTRY LABORATORY

Sample No : 01

Report Date : 13/02/2024

Sample Date : 23/12/2023

Frequency Histogram Your Method



Note : SDI with * marked are not considered for evaluation

Comments :

Biochemistry, Chloride		N	Mean	SD	CV%	Excluded
	All Analyzer	310	81.04	5.22	6.44	7
Your Analyzer :	ST 200 plus Electrolyte analyser	9	84.27	7.12	8.45	-
	Fuji Dri-Chem NX500/i	31	79.77	1.71	2.14	-
	Roche cobas c 311	29	77.08	2.23	2.90	-
	Roche cobas c 311	28	76.91	2.06	2.68	-
	ACCULYTE-3P	20	83.97	4.45	5.30	-
	Fuji Dri-Chem NX600	18	79.19	5.47	6.90	-
	Sensa Core ST200 Aqua	15	85.44	5.72	6.70	3
	Fuji Dri-Chem 4000i	13	77.56	3.49	4.49	-

Remarks: Interpretation of your reports

- a) If your SDI lies between +/- 2.0 SDI then your results are well within limits.
- b) If your SDI lies between +/-2.0 to 2.99 SDI then it is a warning alert flag.
- c) If your SDI is +/- 3.0 SDI or more then it is an action alert flag.

Interpretation when an analyte is reported for multiple samples in a Round:

- a) Reported on 2 samples:
 - Two out of two pass - Acceptable performance
 - One out of two pass - Review for random error & take action if appropriate
 - Both failed - Unacceptable performance, Review for systematic error
- b) Reported on 3 samples:
 - All pass - Acceptable performance
 - Two out of three pass - Review for random error & take action if appropriate
 - One out of three pass - Unacceptable performance, Review for systematic error
 - All failed - Unacceptable performance, Review for systematic error



Lab : 856

Cycle No : 230412

Lab Name : CLINICAL BIOCHEMISTRY LABORATORY

Sample No : 01

Report Date : 13/02/2024

Sample Date : 23/12/2023

Biochemistry, Cholesterol, mg/dl

Comparative Statistics

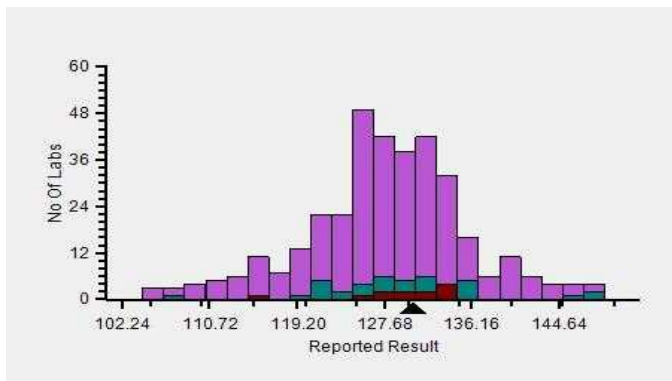
	N	Mean	SD	CV%	Excluded
All Methods	349	127.67	8.33	6.53	8
CHOD-POD - (Your Method)	40	129.57	7.55	5.83	--
Beckman Coulter DxC 700 AU - (Your Analyzer)	12	129.53	5.35	4.13	--

Evaluation Based On - Equipment wise Peer Grouping

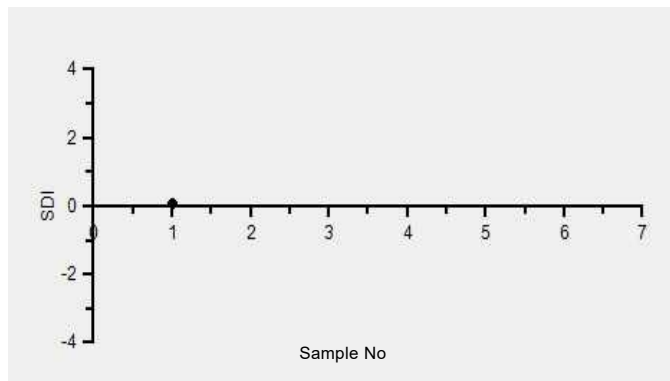
Your Result	130.50	SDI / z-Score	0.06
Assigned Value	130.00	Average SDI	0.03
SDPA	8.600	Uncertainty of AV	1.03
Standard Unit Result Val	130.50	%DEV	0.75

Note : # - Not evaluated / Bimodal distribution
X : SDI more than 4

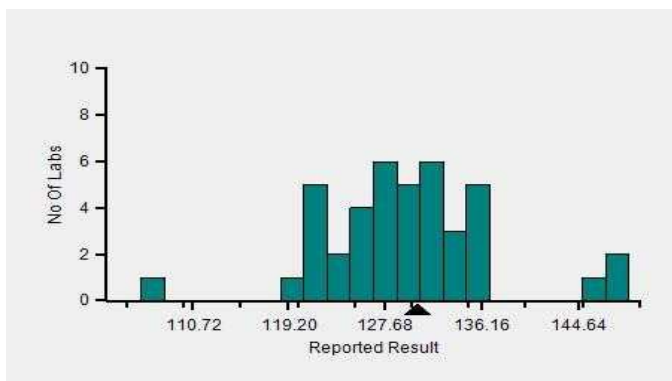
Frequency Histogram



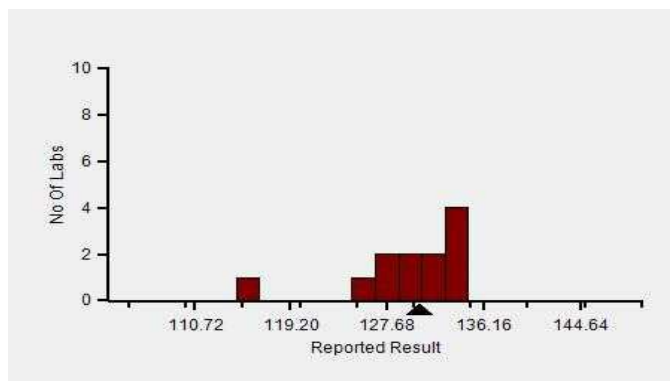
Z-Score Trend - Within Round



Frequency Histogram Your Method



Frequency Histogram Your Analyzer



Lab : 856

Cycle No : 230412

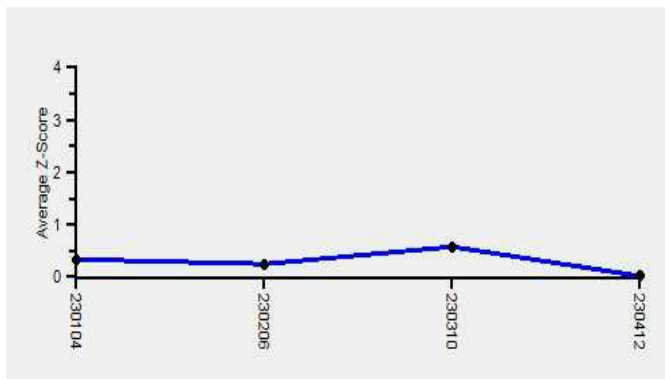
Lab Name : CLINICAL BIOCHEMISTRY LABORATORY

Sample No : 01

Report Date : 13/02/2024

Sample Date : 23/12/2023

Frequency Histogram Your Method



Note : SDI with * marked are not considered for evaluation

Comments :

Biochemistry, Cholesterol		N	Mean	SD	CV%	Excluded
	All Analyzer	349	127.67	8.33	6.53	8
Your Analyzer :	Beckman Coulter DxC 700 AU	12	129.53	5.35	4.13	-
	Erba EM 200	40	127.58	8.73	6.84	-
	Erba EM 200	39	127.72	8.79	6.88	-
	Roche cobas c 311	39	129.47	4.75	3.67	1
	Roche cobas c 311	38	129.29	4.69	3.63	1
	Fuji Dri-Chem NX500/i	30	124.99	7.61	6.09	-
	Diasys 200 Pro	24	130.74	6.55	5.01	1
	Roche cobas c 111	23	127.62	4.27	3.34	1

Remarks: Interpretation of your reports

- a) If your SDI lies between +/- 2.0 SDI then your results are well within limits.
- b) If your SDI lies between +/-2.0 to 2.99 SDI then it is a warning alert flag.
- c) If your SDI is +/- 3.0 SDI or more then it is an action alert flag.

Interpretation when an analyte is reported for multiple samples in a Round:

- a) Reported on 2 samples:
 - Two out of two pass - Acceptable performance
 - One out of two pass - Review for random error & take action if appropriate
 - Both failed - Unacceptable performance, Review for systematic error
- b) Reported on 3 samples:
 - All pass - Acceptable performance
 - Two out of three pass - Review for random error & take action if appropriate
 - One out of three pass - Unacceptable performance, Review for systematic error
 - All failed - Unacceptable performance, Review for systematic error



Lab : 856

Cycle No : 230412

Lab Name : CLINICAL BIOCHEMISTRY LABORATORY

Sample No : 01

Report Date : 13/02/2024

Sample Date : 23/12/2023

Biochemistry, CK, U/L

Comparative Statistics

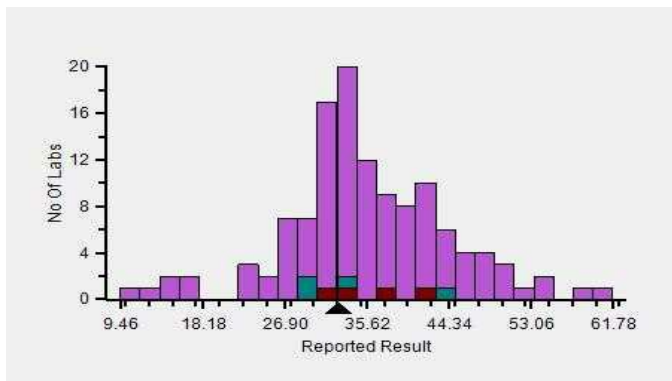
	N	Mean	SD	CV%	Excluded
All Methods	124	35.61	8.77	24.64	3
NAC Activated - IFCC Ref. Proc., Calibrated - (Your Method)	6	33.15	5.59	16.85	--
Beckman Coulter DxC 700 AU - (Your Analyzer)	4	35.95	4.77	13.28	--

Evaluation Based On - Equipment wise Peer Grouping

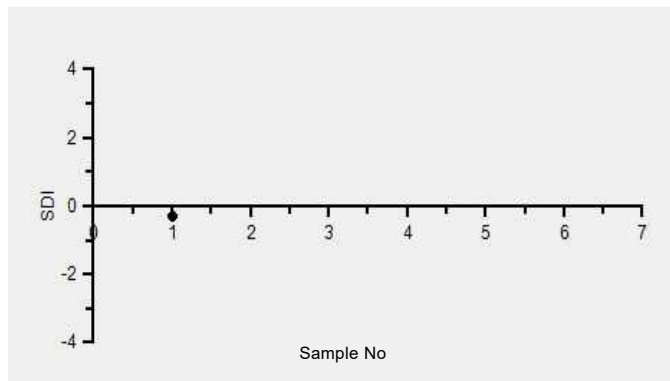
Your Result	32.60	SDI / z-Score	-0.28
Assigned Value	34.92	Average SDI	-0.24
SDPA	8.230	Uncertainty of AV	1.36
Standard Unit Result Val	32.60	%DEV	-1.67

Note : # - Not evaluated / Bimodal distribution
X : SDI more than 4

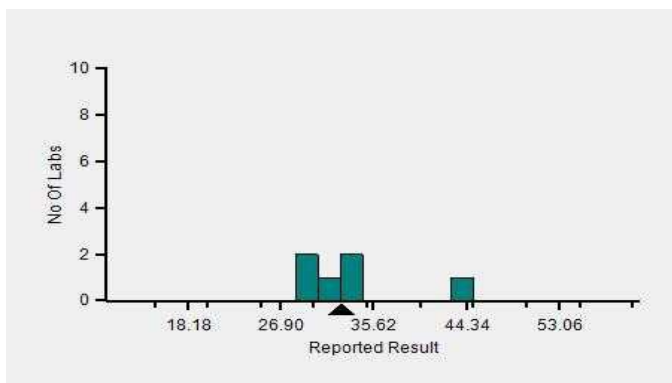
Frequency Histogram



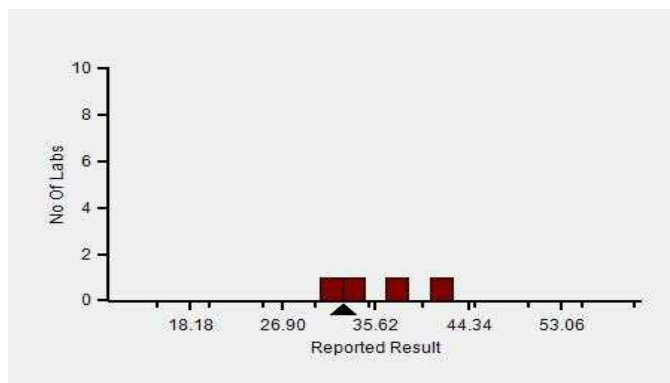
Z-Score Trend - Within Round



Frequency Histogram Your Method



Frequency Histogram Your Analyzer



Lab : 856

Cycle No : 230412

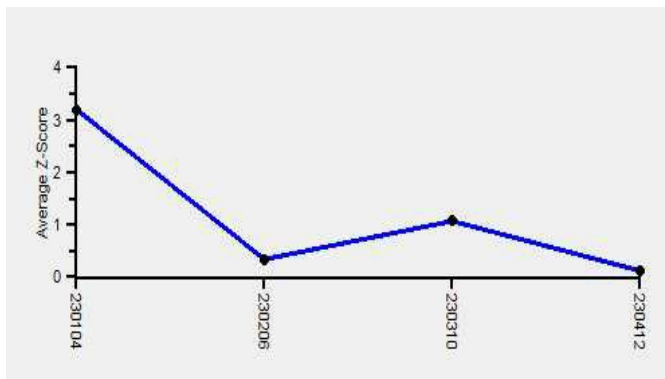
Lab Name : CLINICAL BIOCHEMISTRY LABORATORY

Sample No : 01

Report Date : 13/02/2024

Sample Date : 23/12/2023

Frequency Histogram Your Method



Note : SDI with * marked are not considered for evaluation

Comments :

Biochemistry, CK		N	Mean	SD	CV%	Excluded
	All Analyzer	124	35.61	8.77	24.64	3
Your Analyzer :	Beckman Coulter DxC 700 AU	4	35.95	4.77	13.28	-
	Fuji Dri-Chem NX500/i	20	43.55	7.49	17.19	-
	Roche cobas c 311	15	32.08	5.29	16.50	-
	Fuji Dri-Chem 4000i	10	43.00	9.12	21.20	-
	Roche cobas 6000	10	31.49	2.27	7.21	-
	Erba EM 200	8	41.16	3.34	8.11	-
	Roche cobas 8000	6	32.78	2.76	8.43	-
	Erba Chem 7	5	27.75	11.72	42.21	-

Remarks: Interpretation of your reports

- a) If your SDI lies between +/- 2.0 SDI then your results are well within limits.
- b) If your SDI lies between +/-2.0 to 2.99 SDI then it is a warning alert flag.
- c) If your SDI is +/- 3.0 SDI or more then it is an action alert flag.

Interpretation when an analyte is reported for multiple samples in a Round:

- a) Reported on 2 samples:
 - Two out of two pass - Acceptable performance
 - One out of two pass - Review for random error & take action if appropriate
 - Both failed - Unacceptable performance, Review for systematic error
- b) Reported on 3 samples:
 - All pass - Acceptable performance
 - Two out of three pass - Review for random error & take action if appropriate
 - One out of three pass - Unacceptable performance, Review for systematic error
 - All failed - Unacceptable performance, Review for systematic error



Lab : 856

Cycle No : 230412

Lab Name : CLINICAL BIOCHEMISTRY LABORATORY

Sample No : 01

Report Date : 13/02/2024

Sample Date : 23/12/2023

Biochemistry, Creatinine, mg/dl

Comparative Statistics

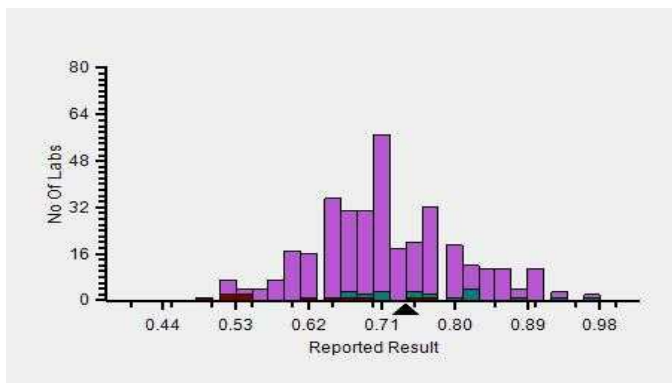
	N	Mean	SD	CV%	Excluded
All Methods	354	0.71	0.09	13.06	13
Modified Jaffe - (Your Method)	26	0.75	0.10	13.66	3
Beckman Coulter DxC 700 AU - (Your Analyzer)	11	0.61	0.10	16.67	--

Your Result	0.74	SDI / z-Score	0.00
Assigned Value	0.74	Average SDI	0.11
SDPA	0.124	Uncertainty of AV	0.02
Standard Unit Result Val	0.74	%DEV	22.11

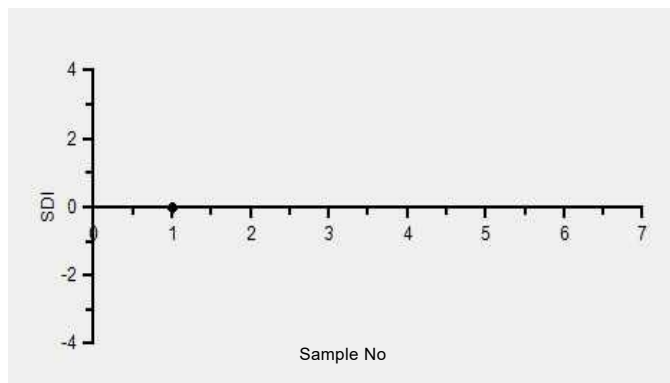
Note : # - Not evaluated / Bimodal distribution

X : SDI more than 4

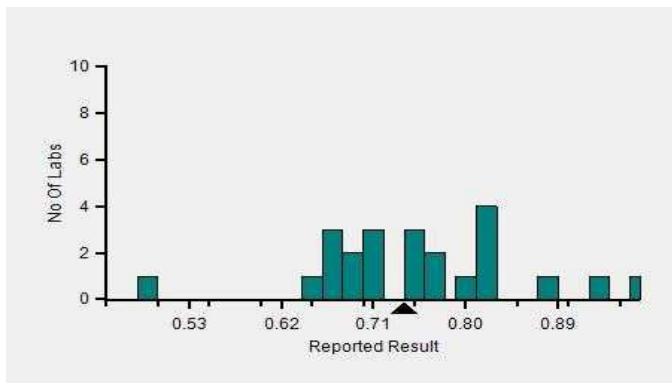
Frequency Histogram



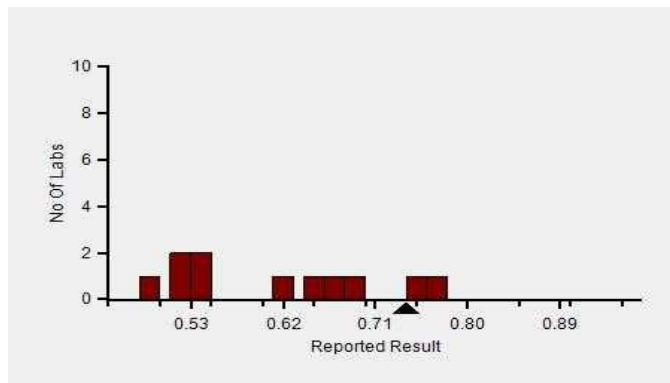
Z-Score Trend - Within Round



Frequency Histogram Your Method



Frequency Histogram Your Analyzer



Lab : 856

Cycle No : 230412

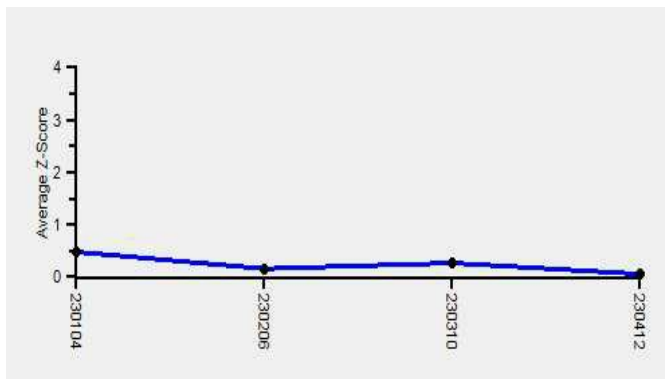
Lab Name : CLINICAL BIOCHEMISTRY LABORATORY

Sample No : 01

Report Date : 13/02/2024

Sample Date : 23/12/2023

Frequency Histogram Your Method



Note : SDI with * marked are not considered for evaluation

Comments :

Biochemistry, Creatinine		N	Mean	SD	CV%	Excluded
	All Analyzer	354	0.71	0.09	13.06	13
Your Analyzer :	Beckman Coulter DxC 700 AU	11	0.61	0.10	16.67	-
	Erba EM 200	42	0.71	0.09	12.52	2
	Erba EM 200	41	0.71	0.09	12.31	2
	Roche cobas c 311	39	0.67	0.05	7.90	-
	Roche cobas c 311	38	0.67	0.05	7.89	-
	Fuji Dri-Chem NX500/i	28	0.78	0.06	7.59	1
	Roche cobas c 111	24	0.67	0.09	13.41	-
	Diasys 200 Pro	24	0.79	0.11	13.44	-

Remarks: Interpretation of your reports

- a) If your SDI lies between +/- 2.0 SDI then your results are well within limits.
- b) If your SDI lies between +/-2.0 to 2.99 SDI then it is a warning alert flag.
- c) If your SDI is +/- 3.0 SDI or more then it is an action alert flag.

Interpretation when an analyte is reported for multiple samples in a Round:

- a) Reported on 2 samples:
 - Two out of two pass - Acceptable performance
 - One out of two pass - Review for random error & take action if appropriate
 - Both failed - Unacceptable performance, Review for systematic error
- b) Reported on 3 samples:
 - All pass - Acceptable performance
 - Two out of three pass - Review for random error & take action if appropriate
 - One out of three pass - Unacceptable performance, Review for systematic error
 - All failed - Unacceptable performance, Review for systematic error



Lab : 856

Cycle No : 230412

Lab Name : CLINICAL BIOCHEMISTRY LABORATORY

Sample No : 01

Report Date : 13/02/2024

Sample Date : 23/12/2023

Biochemistry, GGT, U/L

Comparative Statistics

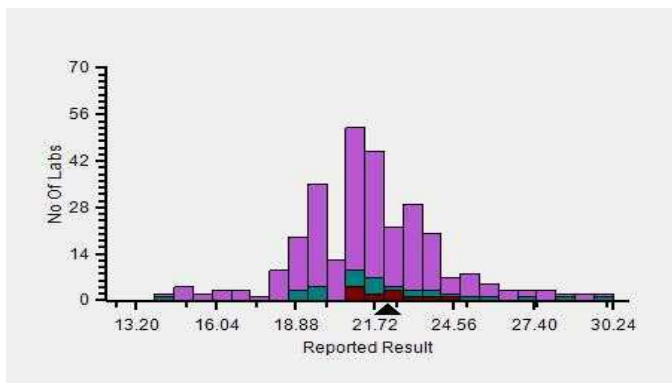
	N	Mean	SD	CV%	Excluded
All Methods	290	21.70	2.80	12.90	5
IFCC - (Your Method)	40	22.09	2.69	12.17	1
Beckman Coulter DxC 700 AU - (Your Analyzer)	12	22.14	1.11	5.01	--

Your Result	22.20	SDI / z-Score	-0.18
Assigned Value	22.73	Average SDI	-0.09
SDPA	2.996	Uncertainty of AV	0.44
Standard Unit Result Val	22.20	%DEV	0.27

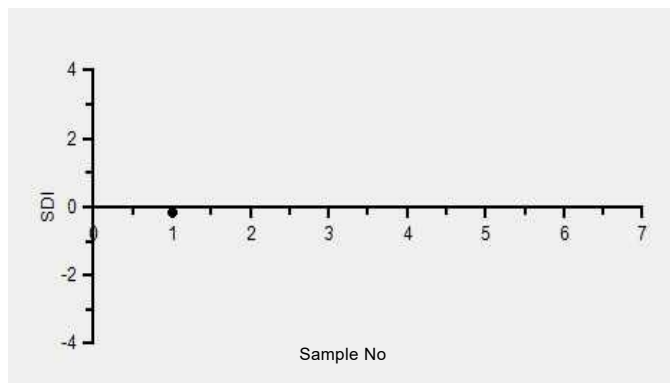
Note : # - Not evaluated / Bimodal distribution

X : SDI more than 4

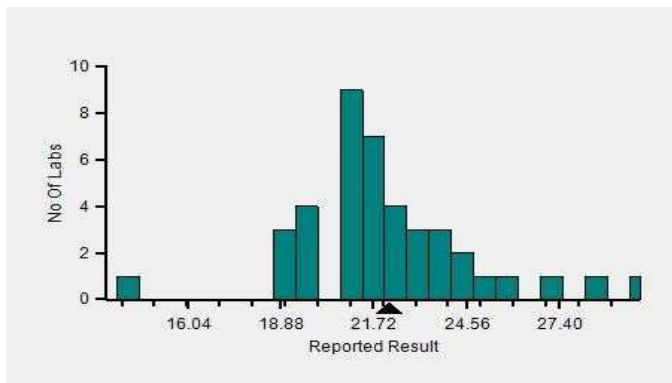
Frequency Histogram



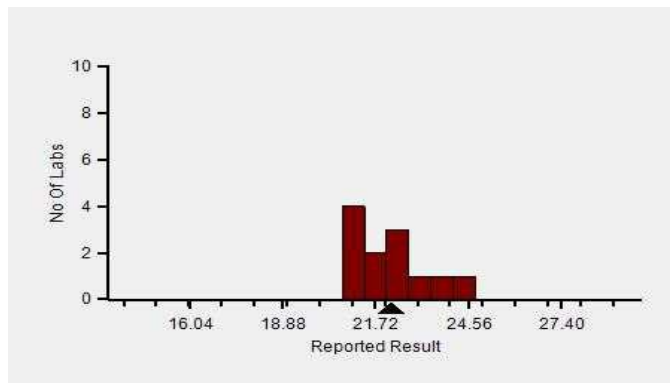
Z-Score Trend - Within Round



Frequency Histogram Your Method



Frequency Histogram Your Analyzer



Lab : 856

Cycle No : 230412

Lab Name : CLINICAL BIOCHEMISTRY LABORATORY

Sample No : 01

Report Date : 13/02/2024

Sample Date : 23/12/2023

Frequency Histogram Your Method



Note : SDI with * marked are not considered for evaluation

Comments :

Biochemistry, GGT		N	Mean	SD	CV%	Excluded
	All Analyzer	290	21.70	2.80	12.90	5
Your Analyzer :	Beckman Coulter DxC 700 AU	12	22.14	1.11	5.01	-
	Roche cobas c 311	38	21.18	1.60	7.54	2
	Roche cobas c 311	37	21.13	1.59	7.52	2
	Fuji Dri-Chem NX500/i	31	22.48	1.65	7.34	-
	Erba EM 200	30	21.29	3.11	14.60	-
	Fuji Dri-Chem NX500/i	30	22.50	1.68	7.45	-
	Roche cobas c 111	22	19.64	2.21	11.23	1
	Erba XL-200	16	23.04	2.93	12.70	-

Remarks: Interpretation of your reports

- a) If your SDI lies between +/- 2.0 SDI then your results are well within limits.
- b) If your SDI lies between +/-2.0 to 2.99 SDI then it is a warning alert flag.
- c) If your SDI is +/- 3.0 SDI or more then it is an action alert flag.

Interpretation when an analyte is reported for multiple samples in a Round:

- a) Reported on 2 samples:
 - Two out of two pass - Acceptable performance
 - One out of two pass - Review for random error & take action if appropriate
 - Both failed - Unacceptable performance, Review for systematic error
- b) Reported on 3 samples:
 - All pass - Acceptable performance
 - Two out of three pass - Review for random error & take action if appropriate
 - One out of three pass - Unacceptable performance, Review for systematic error
 - All failed - Unacceptable performance, Review for systematic error



Lab : 856

Cycle No : 230412

Lab Name : CLINICAL BIOCHEMISTRY LABORATORY

Sample No : 01

Report Date : 13/02/2024

Sample Date : 23/12/2023

Biochemistry, HDL, mg/dl

Comparative Statistics

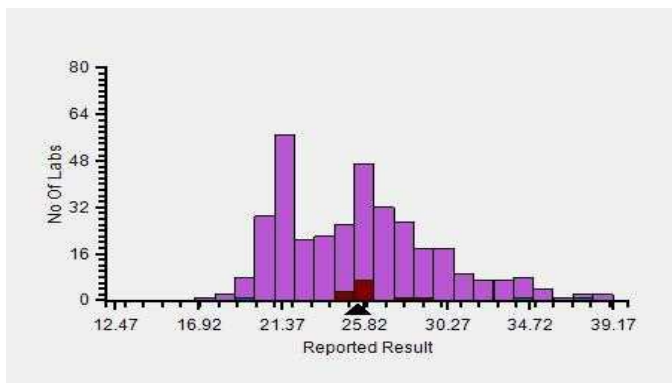
	N	Mean	SD	CV%	Excluded
All Methods	339	25.65	4.22	16.46	3
Direct Immunoinhibition - (Your Method)	7	27.54	6.25	22.68	--
Beckman Coulter DxC 700 AU - (Your Analyzer)	12	25.87	1.35	5.20	--

Your Result	25.50	SDI / z-Score	-0.30
Assigned Value	27.21	Average SDI	-0.30
SDPA	5.600	Uncertainty of AV	0.57
Standard Unit Result Val	25.50	%DEV	-1.43

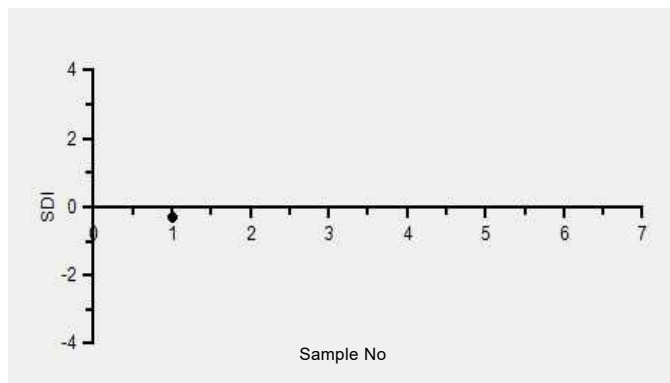
Note : # - Not evaluated / Bimodal distribution

X : SDI more than 4

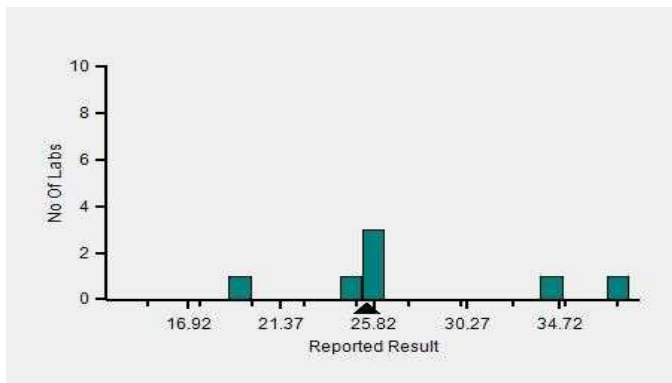
Frequency Histogram



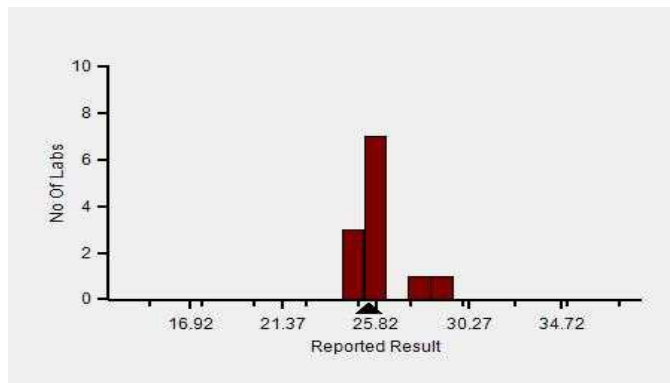
Z-Score Trend - Within Round



Frequency Histogram Your Method



Frequency Histogram Your Analyzer



Lab : 856

Cycle No : 230412

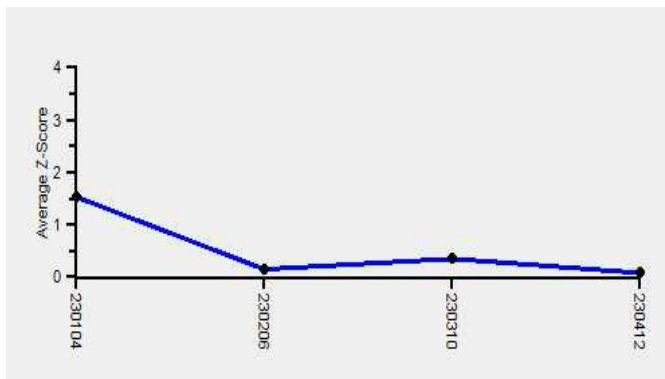
Lab Name : CLINICAL BIOCHEMISTRY LABORATORY

Sample No : 01

Report Date : 13/02/2024

Sample Date : 23/12/2023

Frequency Histogram Your Method



Note : SDI with * marked are not considered for evaluation

Comments :

Biochemistry, HDL		N	Mean	SD	CV%	Excluded
	All Analyzer	339	25.65	4.22	16.46	3
Your Analyzer :	Beckman Coulter DxC 700 AU	12	25.87	1.35	5.20	-
	Roche cobas c 311	40	21.83	1.41	6.46	-
	Roche cobas c 311	39	21.77	1.38	6.35	-
	Erba EM 200	38	26.65	2.15	8.08	-
	Fuji Dri-Chem NX500/i	30	26.52	1.90	7.15	-
	Diasys 200 Pro	25	31.53	3.49	11.06	-
	Diasys 200 Pro	24	31.40	3.50	11.15	-
	Roche cobas c 111	23	21.34	1.56	7.30	-

Remarks: Interpretation of your reports

- a) If your SDI lies between +/- 2.0 SDI then your results are well within limits.
- b) If your SDI lies between +/-2.0 to 2.99 SDI then it is a warning alert flag.
- c) If your SDI is +/- 3.0 SDI or more then it is an action alert flag.

Interpretation when an analyte is reported for multiple samples in a Round:

- a) Reported on 2 samples:
 - Two out of two pass - Acceptable performance
 - One out of two pass - Review for random error & take action if appropriate
 - Both failed - Unacceptable performance, Review for systematic error
- b) Reported on 3 samples:
 - All pass - Acceptable performance
 - Two out of three pass - Review for random error & take action if appropriate
 - One out of three pass - Unacceptable performance, Review for systematic error
 - All failed - Unacceptable performance, Review for systematic error



Lab : 856

Cycle No : 230412

Lab Name : CLINICAL BIOCHEMISTRY LABORATORY

Sample No : 01

Report Date : 13/02/2024

Sample Date : 23/12/2023

Biochemistry, Iron, µg/dL

Comparative Statistics

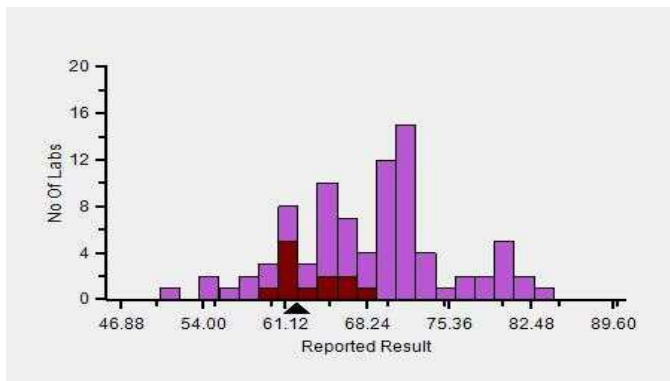
	N	Mean	SD	CV%	Excluded
All Methods	85	68.23	7.19	10.53	1
TPTZ-deproteinization - (Your Method)	6	63.35	2.78	4.39	--
Beckman Coulter DxC 700 AU - (Your Analyzer)	12	63.40	2.51	3.95	--

Evaluation Based On - Equipment wise Peer Grouping

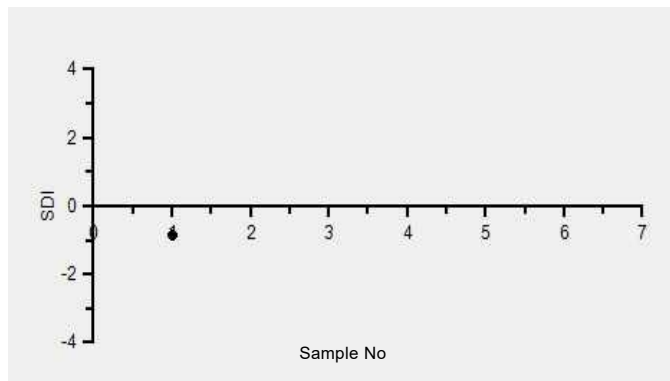
Your Result	62.10	SDI / z-Score	-0.84
Assigned Value	68.41	Average SDI	-0.93
SDPA	7.560	Uncertainty of AV	0.94
Standard Unit Result Val	62.10	%DEV	-2.05

Note : # - Not evaluated / Bimodal distribution
X : SDI more than 4

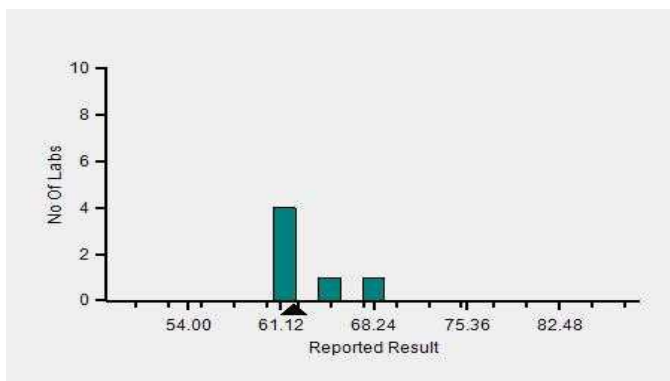
Frequency Histogram



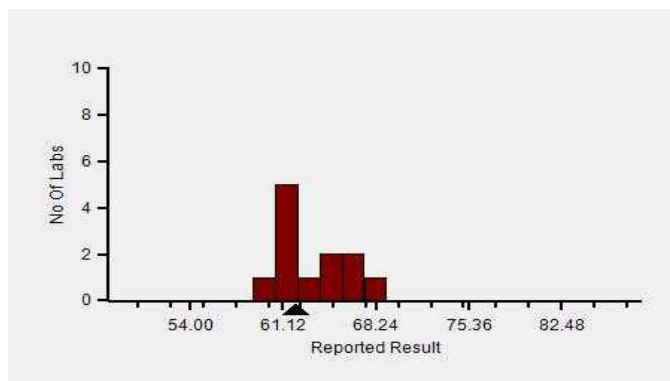
Z-Score Trend - Within Round



Frequency Histogram Your Method



Frequency Histogram Your Analyzer



Lab : 856

Cycle No : 230412

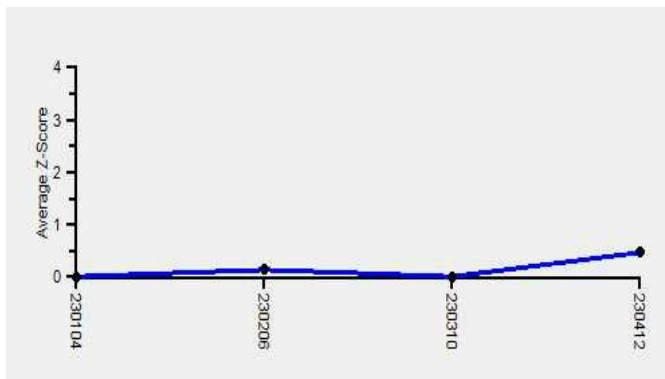
Lab Name : CLINICAL BIOCHEMISTRY LABORATORY

Sample No : 01

Report Date : 13/02/2024

Sample Date : 23/12/2023

Frequency Histogram Your Method



Note : SDI with * marked are not considered for evaluation

Comments :

Biochemistry, Iron		N	Mean	SD	CV%	Excluded
	All Analyzer	85	68.23	7.19	10.53	1
Your Analyzer :	Beckman Coulter DxC 700 AU	12	63.40	2.51	3.95	-
	Roche cobas c 311	18	70.78	4.52	6.39	-
	Roche cobas 6000	10	73.60	4.85	6.58	-
	Roche cobas INTEGRA	7	73.25	7.32	10.00	-
	Roche cobas 8000	6	74.43	4.69	6.30	-
	Roche Cobas Pure	4	72.40	5.39	7.44	-
	Erba EM 200	3	58.30	16.55	28.38	1
	Roche cobas c 111	3	69.27	7.26	10.48	-

Remarks: Interpretation of your reports

- a) If your SDI lies between +/- 2.0 SDI then your results are well within limits.
- b) If your SDI lies between +/-2.0 to 2.99 SDI then it is a warning alert flag.
- c) If your SDI is +/- 3.0 SDI or more then it is an action alert flag.

Interpretation when an analyte is reported for multiple samples in a Round:

- a) Reported on 2 samples:
 - Two out of two pass - Acceptable performance
 - One out of two pass - Review for random error & take action if appropriate
 - Both failed - Unacceptable performance, Review for systematic error
- b) Reported on 3 samples:
 - All pass - Acceptable performance
 - Two out of three pass - Review for random error & take action if appropriate
 - One out of three pass - Unacceptable performance, Review for systematic error
 - All failed - Unacceptable performance, Review for systematic error



Lab : 856

Cycle No : 230412

Lab Name : CLINICAL BIOCHEMISTRY LABORATORY

Sample No : 01

Report Date : 13/02/2024

Sample Date : 23/12/2023

Biochemistry, LDH, U/L

Comparative Statistics

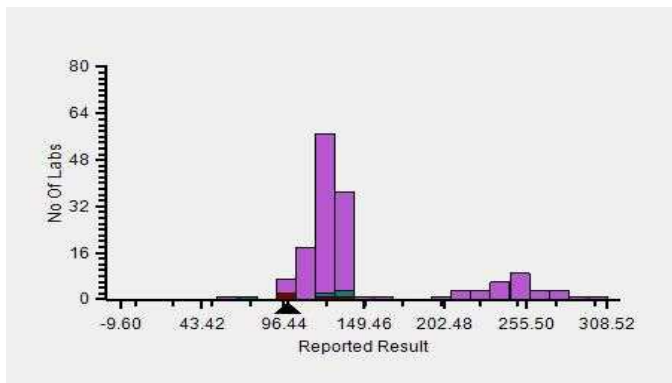
	N	Mean	SD	CV%	Excluded
All Methods	155	149.81	53.82	35.92	6
L to P - IFCC Ref. Proc., Calibrated - (Your Method)	7	116.91	23.31	19.93	--
Beckman Coulter DxC 700 AU - (Your Analyzer)	4	115.25	21.64	18.77	--

Evaluation Based On - Equipment wise Peer Grouping

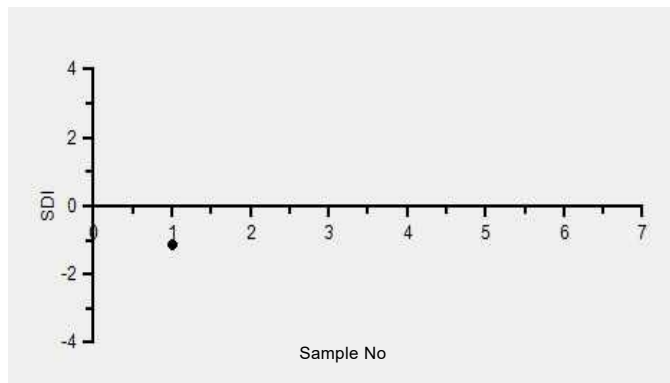
Your Result	99.40	SDI / z-Score	-1.13
Assigned Value	116.67	Average SDI	-1.20
SDPA	15.305	Uncertainty of AV	4.64
Standard Unit Result Val	99.40	%DEV	-14.98

Note : # - Not evaluated / Bimodal distribution
X : SDI more than 4

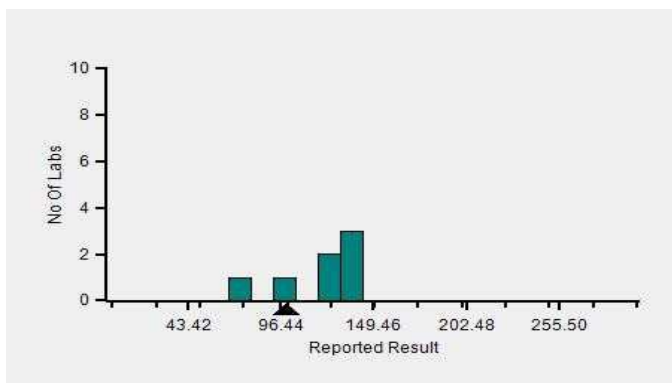
Frequency Histogram



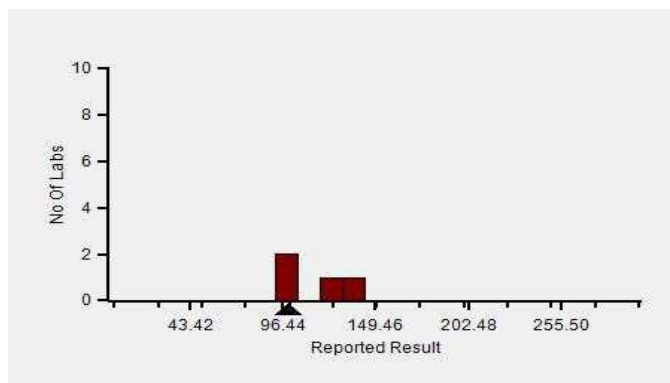
Z-Score Trend - Within Round



Frequency Histogram Your Method



Frequency Histogram Your Analyzer



Lab : 856

Cycle No : 230412

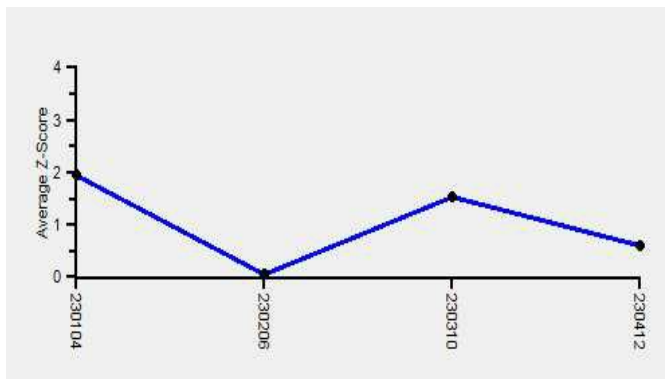
Lab Name : CLINICAL BIOCHEMISTRY LABORATORY

Sample No : 01

Report Date : 13/02/2024

Sample Date : 23/12/2023

Frequency Histogram Your Method



Note : SDI with * marked are not considered for evaluation

Comments :

Biochemistry, LDH		N	Mean	SD	CV%	Excluded
All Analyzer		155	149.81	53.82	35.92	6
Your Analyzer :	Beckman Coulter DxC 700 AU	4	115.25	21.64	18.77	-
	Fuji Dri-Chem NX500/i	26	119.52	9.82	8.21	1
	Roche cobas c 311	21	127.86	5.70	4.46	-
	Erba EM 200	13	260.73	15.62	5.99	1
	Roche cobas 6000	9	131.48	4.50	3.42	-
	Roche cobas c 111	8	131.68	8.41	6.38	-
	Fuji Dri-Chem 4000i	7	113.14	23.57	20.83	-
	Roche cobas 8000	6	129.66	4.00	3.09	-

Remarks: Interpretation of your reports

- a) If your SDI lies between +/- 2.0 SDI then your results are well within limits.
- b) If your SDI lies between +/-2.0 to 2.99 SDI then it is a warning alert flag.
- c) If your SDI is +/- 3.0 SDI or more then it is an action alert flag.

Interpretation when an analyte is reported for multiple samples in a Round:

- a) Reported on 2 samples:
 - Two out of two pass - Acceptable performance
 - One out of two pass - Review for random error & take action if appropriate
 - Both failed - Unacceptable performance, Review for systematic error
- b) Reported on 3 samples:
 - All pass - Acceptable performance
 - Two out of three pass - Review for random error & take action if appropriate
 - One out of three pass - Unacceptable performance, Review for systematic error
 - All failed - Unacceptable performance, Review for systematic error



Lab : 856

Cycle No : 230412

Lab Name : CLINICAL BIOCHEMISTRY LABORATORY

Sample No : 01

Report Date : 13/02/2024

Sample Date : 23/12/2023

Biochemistry, LDL, mg/dl

Comparative Statistics

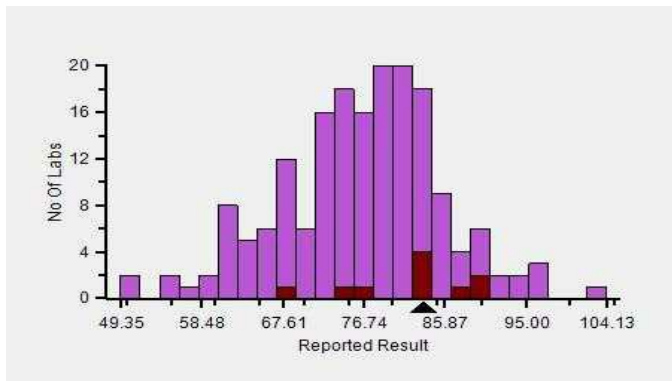
	N	Mean	SD	CV%	Excluded
All Methods	186	76.77	9.05	11.79	3
Enzymatic Selection Protection - (Your Method)	5	82.10	8.87	10.80	--
Beckman Coulter DxC 700 AU - (Your Analyzer)	10	81.81	7.19	8.79	--

Your Result	83.40	SDI / z-Score	0.77
Assigned Value	76.28	Average SDI	0.93
SDPA	9.300	Uncertainty of AV	1.21
Standard Unit Result Val	83.40	%DEV	1.95

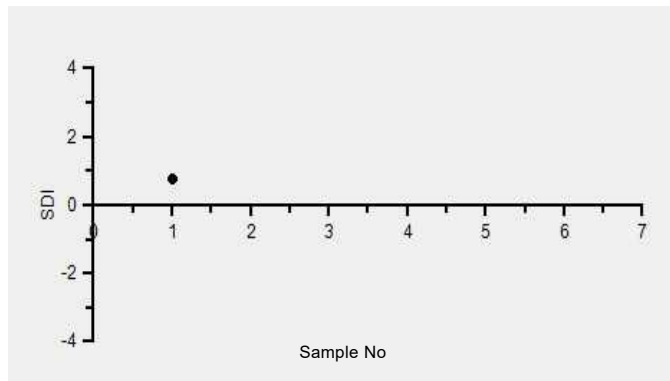
Note : # - Not evaluated / Bimodal distribution

X : SDI more than 4

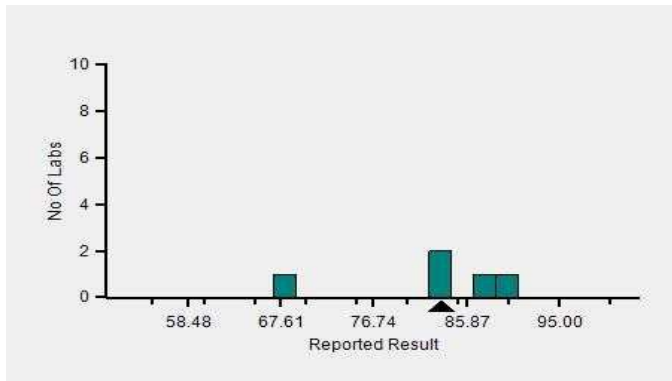
Frequency Histogram



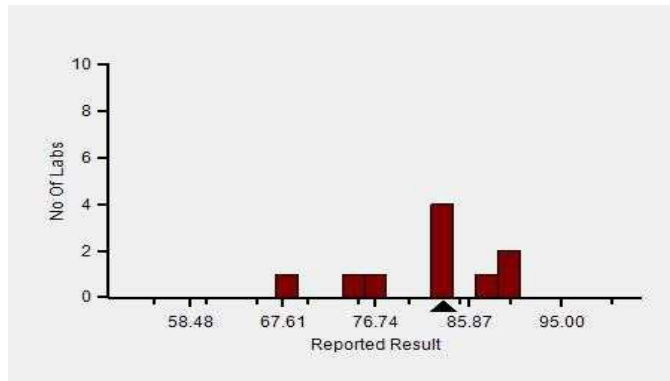
Z-Score Trend - Within Round



Frequency Histogram Your Method



Frequency Histogram Your Analyzer



Lab : 856

Cycle No : 230412

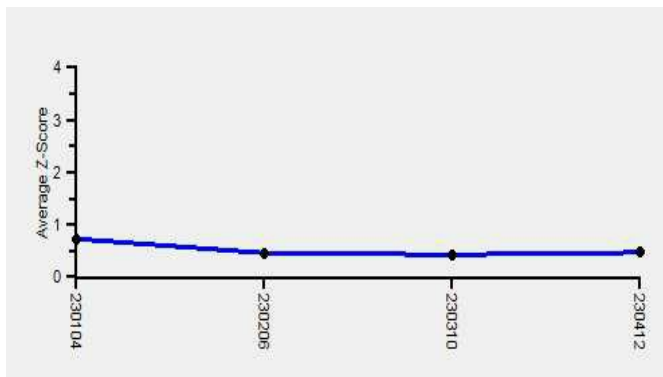
Lab Name : CLINICAL BIOCHEMISTRY LABORATORY

Sample No : 01

Report Date : 13/02/2024

Sample Date : 23/12/2023

Frequency Histogram Your Method



Note : SDI with * marked are not considered for evaluation

Comments :

Biochemistry, LDL		N	Mean	SD	CV%	Excluded
	All Analyzer	186	76.77	9.05	11.79	3
Your Analyzer :	Beckman Coulter DxC 700 AU	10	81.81	7.19	8.79	-
	Roche cobas c 311	28	80.88	4.66	5.77	-
	Diasys 200 Pro	24	72.12	7.83	10.85	1
	Diasys 200 Pro	23	72.09	8.01	11.11	1
	Erba EM 200	17	78.72	10.05	12.77	-
	Roche cobas 6000	12	78.66	2.96	3.77	-
	ERBA XL-640	10	75.09	9.51	12.66	-
	Roche cobas INTEGRA	9	85.12	11.09	13.02	-

Remarks: Interpretation of your reports

- a) If your SDI lies between +/- 2.0 SDI then your results are well within limits.
- b) If your SDI lies between +/-2.0 to 2.99 SDI then it is a warning alert flag.
- c) If your SDI is +/- 3.0 SDI or more then it is an action alert flag.

Interpretation when an analyte is reported for multiple samples in a Round:

a) Reported on 2 samples:

- Two out of two pass - Acceptable performance
- One out of two pass - Review for random error & take action if appropriate
- Both failed - Unacceptable performance, Review for systematic error

b) Reported on 3 samples:

- All pass - Acceptable performance
- Two out of three pass - Review for random error & take action if appropriate
- One out of three pass - Unacceptable performance, Review for systematic error
- All failed - Unacceptable performance, Review for systematic error



Lab : 856

Cycle No : 230412

Lab Name : CLINICAL BIOCHEMISTRY LABORATORY

Sample No : 01

Report Date : 13/02/2024

Sample Date : 23/12/2023

Biochemistry, Lipase, U/L

Comparative Statistics

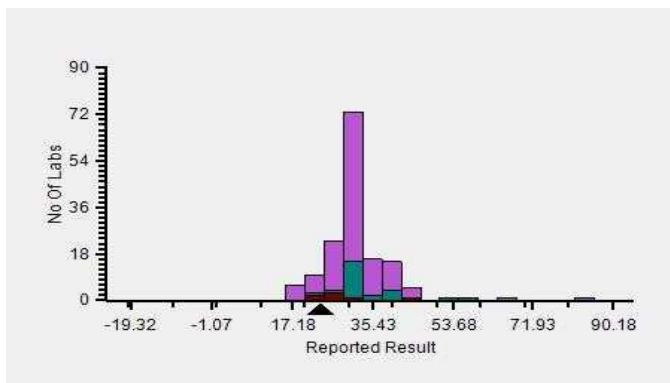
	N	Mean	SD	CV%	Excluded
All Methods	158	34.56	16.16	46.77	6
Enzymatic colorimetric - (Your Method)	33	35.24	13.49	38.28	1
Beckman Coulter DxC 700 AU - (Your Analyzer)	7	28.60	7.96	27.85	--

Your Result	23.55	SDI / z-Score	-1.81
Assigned Value	32.39	Average SDI	-1.54
SDPA	4.878	Uncertainty of AV	1.13
Standard Unit Result Val	23.55	%DEV	-17.66

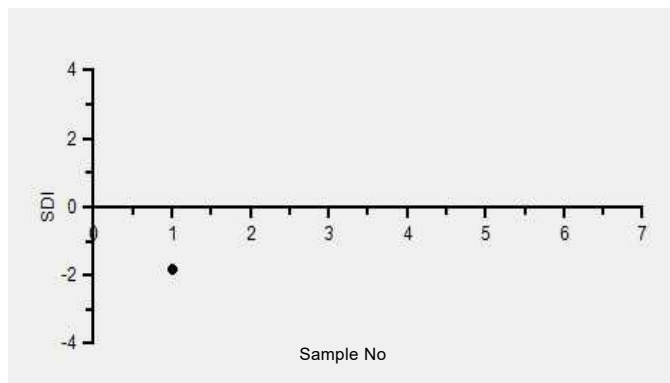
Note : # - Not evaluated / Bimodal distribution

X : SDI more than 4

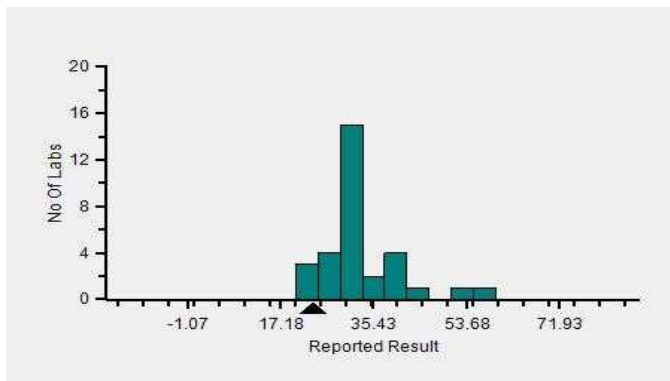
Frequency Histogram



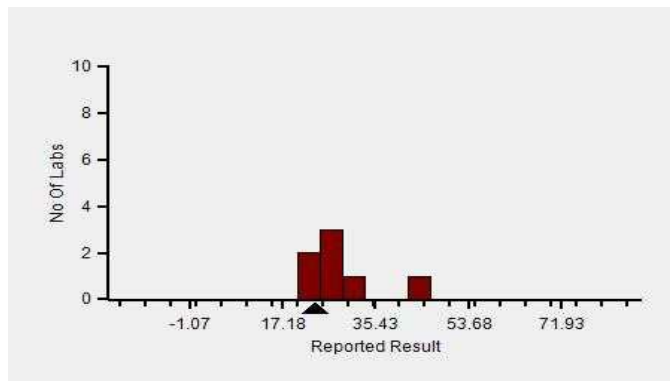
Z-Score Trend - Within Round



Frequency Histogram Your Method



Frequency Histogram Your Analyzer



Lab : 856

Cycle No : 230412

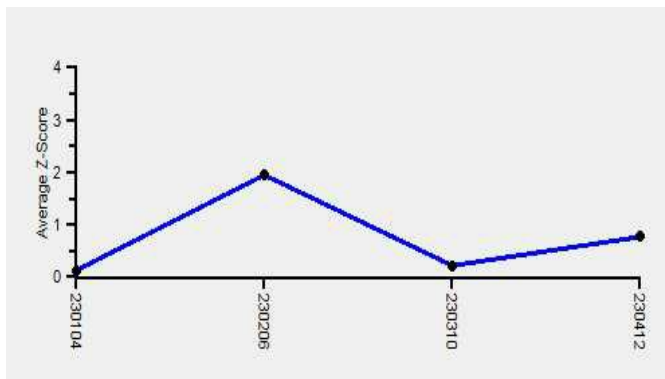
Lab Name : CLINICAL BIOCHEMISTRY LABORATORY

Sample No : 01

Report Date : 13/02/2024

Sample Date : 23/12/2023

Frequency Histogram Your Method



Note : SDI with * marked are not considered for evaluation

Comments :

Biochemistry, Lipase		N	Mean	SD	CV%	Excluded
	All Analyzer	158	34.56	16.16	46.77	6
Your Analyzer :	Beckman Coulter DxC 700 AU	7	28.60	7.96	27.85	-
	Fuji Dri-Chem NX500/i	25	27.48	5.65	20.56	-
	Roche cobas c 311	17	30.81	2.34	7.60	-
	Erba EM 200	16	34.45	9.97	28.93	1
	Fuji Dri-Chem 4000i	11	29.73	5.35	18.00	-
	Roche cobas 6000	9	30.98	2.46	7.95	-
	ERBA XL-640	7	40.55	6.08	14.99	1
	Roche cobas c 111	7	30.53	3.12	10.23	-

Remarks: Interpretation of your reports

- a) If your SDI lies between +/- 2.0 SDI then your results are well within limits.
- b) If your SDI lies between +/-2.0 to 2.99 SDI then it is a warning alert flag.
- c) If your SDI is +/- 3.0 SDI or more then it is an action alert flag.

Interpretation when an analyte is reported for multiple samples in a Round:

- a) Reported on 2 samples:
 - Two out of two pass - Acceptable performance
 - One out of two pass - Review for random error & take action if appropriate
 - Both failed - Unacceptable performance, Review for systematic error
- b) Reported on 3 samples:
 - All pass - Acceptable performance
 - Two out of three pass - Review for random error & take action if appropriate
 - One out of three pass - Unacceptable performance, Review for systematic error
 - All failed - Unacceptable performance, Review for systematic error



Lab : 856

Cycle No : 230412

Lab Name : CLINICAL BIOCHEMISTRY LABORATORY

Sample No : 01

Report Date : 13/02/2024

Sample Date : 23/12/2023

Biochemistry, Magnesium, mg/dl

Comparative Statistics

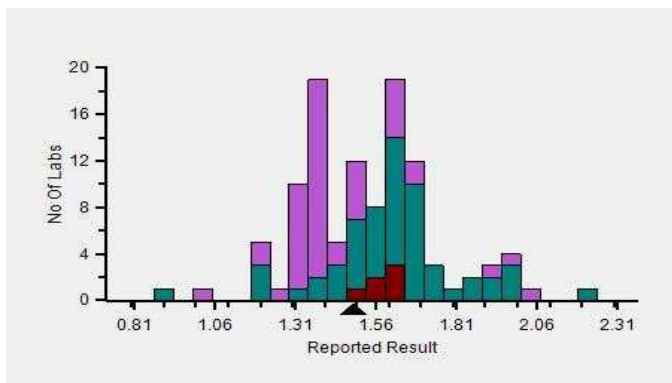
	N	Mean	SD	CV%	Excluded
All Methods	112	1.56	0.26	16.43	5
Xylidyl blue - (Your Method)	67	1.63	0.24	14.91	3
Beckman Coulter DxC 700 AU - (Your Analyzer)	6	1.58	0.05	3.17	--

Your Result	1.49	SDI / z-Score	-0.85
Assigned Value	1.58	Average SDI	-0.52
SDPA	0.110	Uncertainty of AV	0.02
Standard Unit Result Val	1.49	%DEV	-5.70

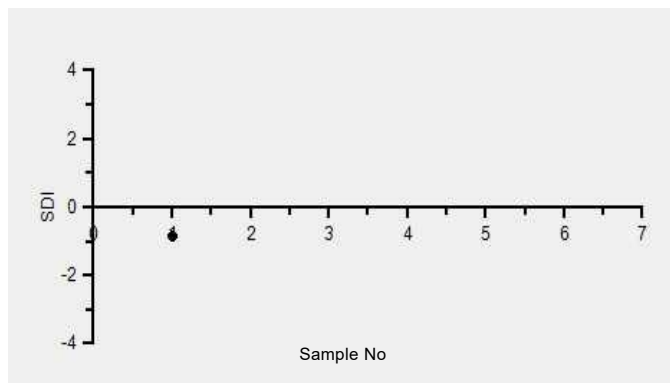
Note : # - Not evaluated / Bimodal distribution

X : SDI more than 4

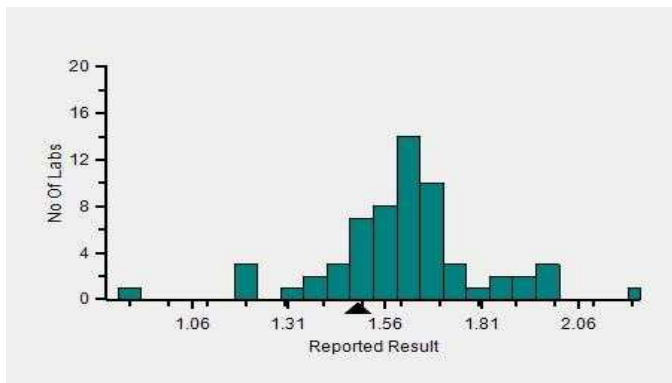
Frequency Histogram



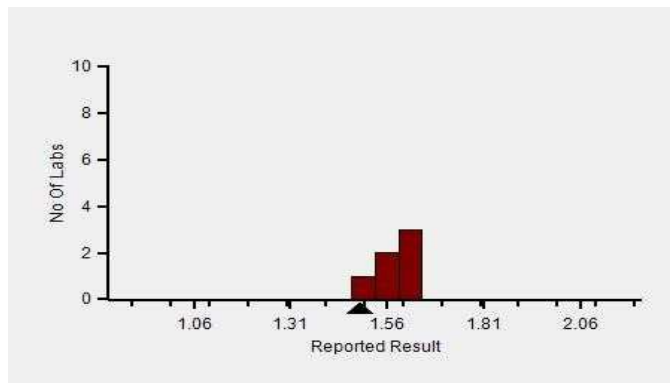
Z-Score Trend - Within Round



Frequency Histogram Your Method



Frequency Histogram Your Analyzer



Lab : 856

Cycle No : 230412

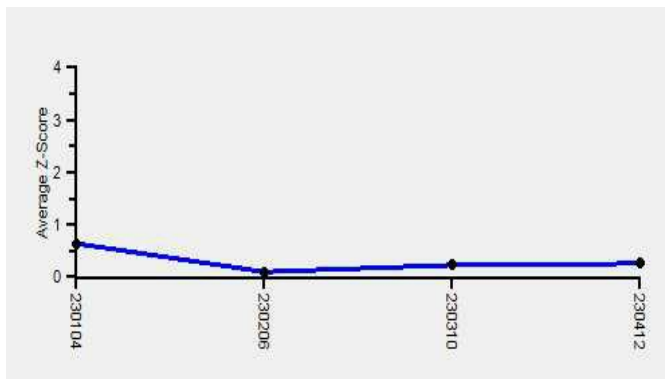
Lab Name : CLINICAL BIOCHEMISTRY LABORATORY

Sample No : 01

Report Date : 13/02/2024

Sample Date : 23/12/2023

Frequency Histogram Your Method



Note : SDI with * marked are not considered for evaluation

Comments :

Biochemistry, Magnesium		N	Mean	SD	CV%	Excluded
	All Analyzer	112	1.56	0.26	16.43	5
Your Analyzer :	Beckman Coulter DxC 700 AU	6	1.58	0.05	3.17	-
	Fuji Dri-Chem NX500/i	19	1.36	0.08	5.58	-
	Roche cobas 6000	9	1.61	0.12	7.63	-
	Roche cobas c 311	9	1.60	0.16	10.14	1
	Erba EM 200	8	1.82	0.34	18.69	-
	Fuji Dri-Chem 4000i	7	1.35	0.06	4.07	1
	Roche cobas 8000	6	1.63	0.04	2.40	-
	Roche cobas INTEGRA	4	1.60	0.07	4.06	1

Remarks: Interpretation of your reports

- a) If your SDI lies between +/- 2.0 SDI then your results are well within limits.
- b) If your SDI lies between +/-2.0 to 2.99 SDI then it is a warning alert flag.
- c) If your SDI is +/- 3.0 SDI or more then it is an action alert flag.

Interpretation when an analyte is reported for multiple samples in a Round:

- a) Reported on 2 samples:
 - Two out of two pass - Acceptable performance
 - One out of two pass - Review for random error & take action if appropriate
 - Both failed - Unacceptable performance, Review for systematic error
- b) Reported on 3 samples:
 - All pass - Acceptable performance
 - Two out of three pass - Review for random error & take action if appropriate
 - One out of three pass - Unacceptable performance, Review for systematic error
 - All failed - Unacceptable performance, Review for systematic error



Lab : 856

Cycle No : 230412

Lab Name : CLINICAL BIOCHEMISTRY LABORATORY

Sample No : 01

Report Date : 13/02/2024

Sample Date : 23/12/2023

Biochemistry, Phosphorous Inorganic, mg/dl

Comparative Statistics

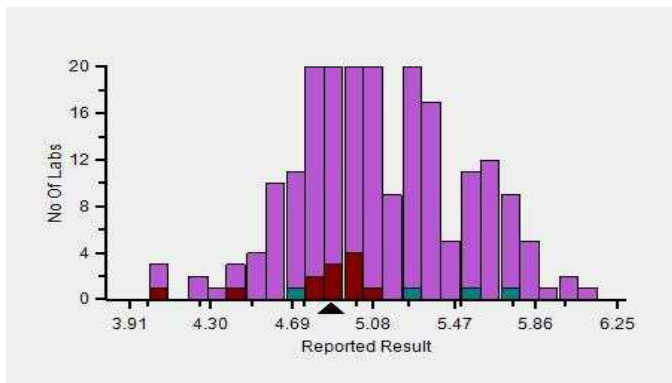
	N	Mean	SD	CV%	Excluded
All Methods	251	5.09	0.39	7.60	5
Phosphomolybdate formation - (Your Method)	12	5.01	0.41	8.13	--
Beckman Coulter DxC 700 AU - (Your Analyzer)	12	4.81	0.29	6.03	--

Evaluation Based On - Equipment wise Peer Grouping

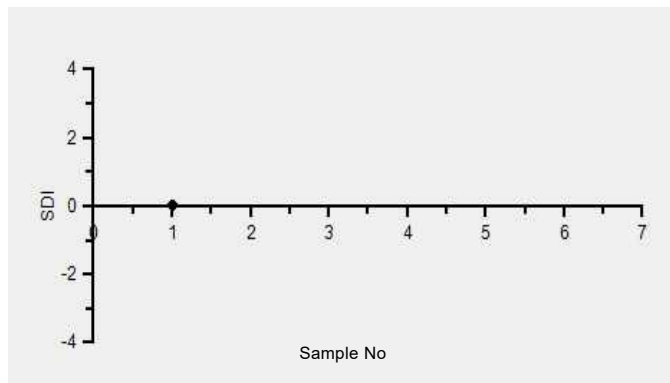
Your Result	4.88	SDI / z-Score	0.04
Assigned Value	4.87	Average SDI	-0.05
SDPA	0.290	Uncertainty of AV	0.03
Standard Unit Result Val	4.88	%DEV	1.46

Note : # - Not evaluated / Bimodal distribution
X : SDI more than 4

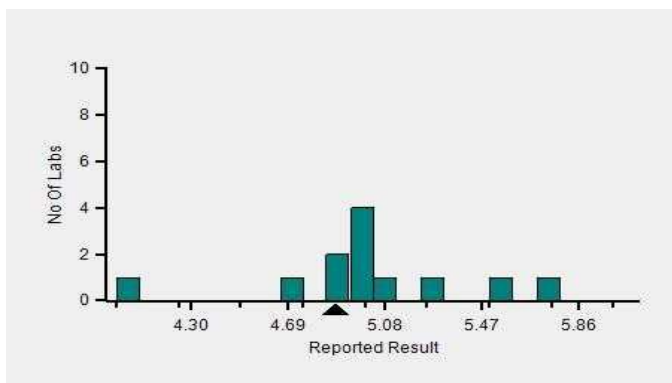
Frequency Histogram



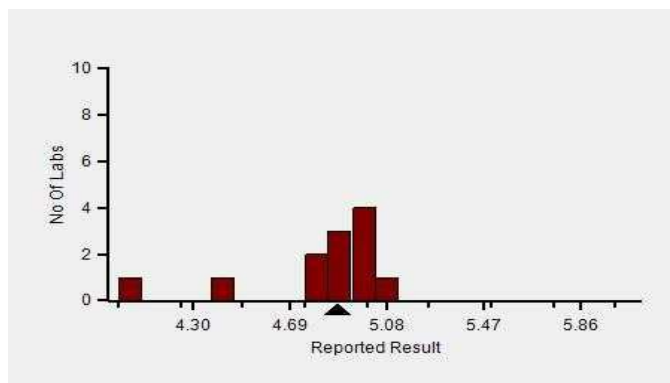
Z-Score Trend - Within Round



Frequency Histogram Your Method



Frequency Histogram Your Analyzer



Lab : 856

Cycle No : 230412

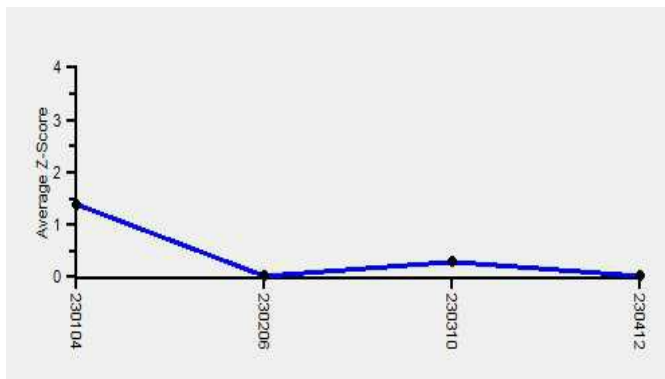
Lab Name : CLINICAL BIOCHEMISTRY LABORATORY

Sample No : 01

Report Date : 13/02/2024

Sample Date : 23/12/2023

Frequency Histogram Your Method



Note : SDI with * marked are not considered for evaluation

Comments :

Biochemistry, Phosphorous Inorganic		N	Mean	SD	CV%	Excluded
	All Analyzer	251	5.09	0.39	7.60	5
Your Analyzer :	Beckman Coulter DxC 700 AU	12	4.81	0.29	6.03	-
	Roche cobas c 311	35	4.83	0.17	3.48	-
	Roche cobas c 311	34	4.84	0.17	3.43	-
	Fuji Dri-Chem NX500/i	25	5.51	0.25	4.48	1
	Erba EM 200	23	5.22	0.41	7.80	1
	Roche cobas c 111	15	5.02	0.22	4.38	-
	Erba XL-200	13	5.31	0.24	4.43	-
	Fuji Dri-Chem NX600	12	5.34	0.35	6.46	-

Remarks: Interpretation of your reports

- a) If your SDI lies between +/- 2.0 SDI then your results are well within limits.
- b) If your SDI lies between +/-2.0 to 2.99 SDI then it is a warning alert flag.
- c) If your SDI is +/- 3.0 SDI or more then it is an action alert flag.

Interpretation when an analyte is reported for multiple samples in a Round:

- a) Reported on 2 samples:
 - Two out of two pass - Acceptable performance
 - One out of two pass - Review for random error & take action if appropriate
 - Both failed - Unacceptable performance, Review for systematic error
- b) Reported on 3 samples:
 - All pass - Acceptable performance
 - Two out of three pass - Review for random error & take action if appropriate
 - One out of three pass - Unacceptable performance, Review for systematic error
 - All failed - Unacceptable performance, Review for systematic error



Lab : 856

Cycle No : 230412

Lab Name : CLINICAL BIOCHEMISTRY LABORATORY

Sample No : 01

Report Date : 13/02/2024

Sample Date : 23/12/2023

Biochemistry, Potassium, mmol/L

Comparative Statistics

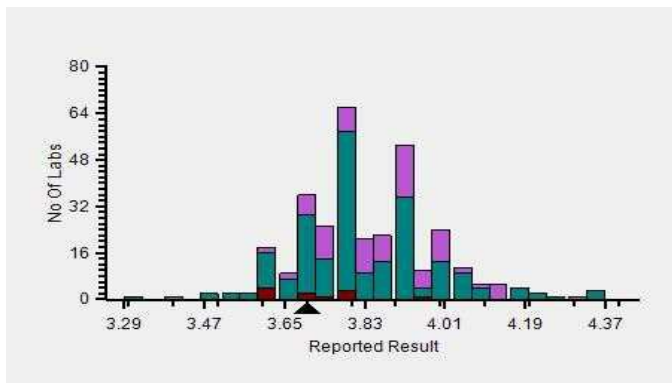
	N	Mean	SD	CV%	Excluded
All Methods	323	3.83	0.18	4.77	4
ISE direct - (Your Method)	234	3.82	0.20	5.16	3
Sensa Core ST 200 plus - (Your Analyzer)	11	3.72	0.11	2.98	--

Evaluation Based On - Method wise Peer Grouping

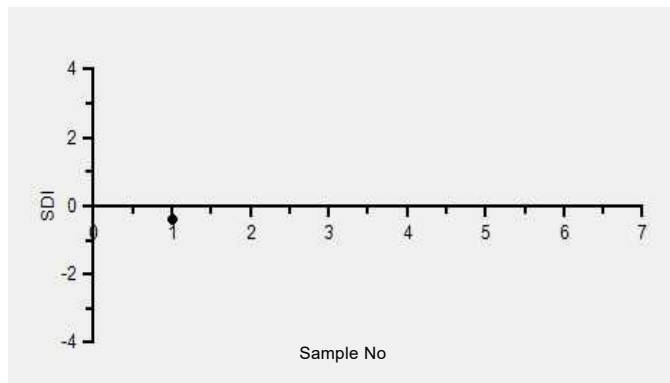
Your Result	3.70	SDI / z-Score	-0.40
Assigned Value	3.82	Average SDI	-0.42
SDPA	0.290	Uncertainty of AV	0.01
Standard Unit Result Val	3.70	%DEV	-0.54

Note : # - Not evaluated / Bimodal distribution
X : SDI more than 4

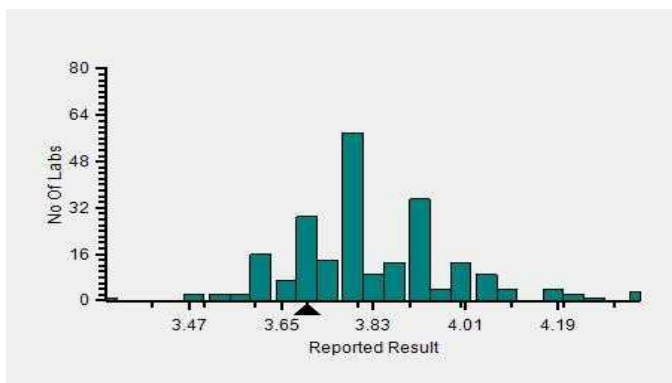
Frequency Histogram



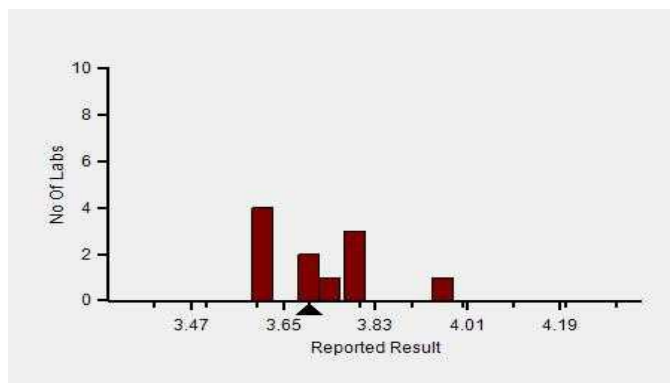
Z-Score Trend - Within Round



Frequency Histogram Your Method



Frequency Histogram Your Analyzer



Lab : 856

Cycle No : 230412

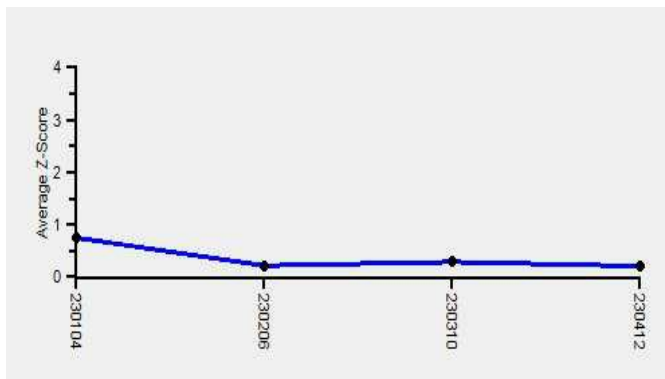
Lab Name : CLINICAL BIOCHEMISTRY LABORATORY

Sample No : 01

Report Date : 13/02/2024

Sample Date : 23/12/2023

Frequency Histogram Your Method



Note : SDI with * marked are not considered for evaluation

Comments :

Biochemistry, Potassium		N	Mean	SD	CV%	Excluded
	All Analyzer	323	3.83	0.18	4.77	4
Your Analyzer :	Sensa Core ST 200 plus	11	3.72	0.11	2.98	-
	Fuji Dri-Chem NX500/i	36	3.78	0.08	2.12	-
	Fuji Dri-Chem NX500/i	35	3.78	0.08	1.98	-
	Roche cobas c 311	28	3.93	0.12	3.16	-
	Roche cobas c 311	27	3.94	0.12	2.92	-
	ACCULYTE-3P	19	3.69	0.16	4.36	-
	Fuji Dri-Chem NX600	17	3.76	0.22	5.77	-
	Sensa Core ST200 Aqua	16	3.87	0.14	3.65	1

Remarks: Interpretation of your reports

- a) If your SDI lies between +/- 2.0 SDI then your results are well within limits.
- b) If your SDI lies between +/-2.0 to 2.99 SDI then it is a warning alert flag.
- c) If your SDI is +/- 3.0 SDI or more then it is an action alert flag.

Interpretation when an analyte is reported for multiple samples in a Round:

- a) Reported on 2 samples:
 - Two out of two pass - Acceptable performance
 - One out of two pass - Review for random error & take action if appropriate
 - Both failed - Unacceptable performance, Review for systematic error
- b) Reported on 3 samples:
 - All pass - Acceptable performance
 - Two out of three pass - Review for random error & take action if appropriate
 - One out of three pass - Unacceptable performance, Review for systematic error
 - All failed - Unacceptable performance, Review for systematic error



Lab : 856

Cycle No : 230412

Lab Name : CLINICAL BIOCHEMISTRY LABORATORY

Sample No : 01

Report Date : 13/02/2024

Sample Date : 23/12/2023

Biochemistry, Sodium, mmol/L

Comparative Statistics

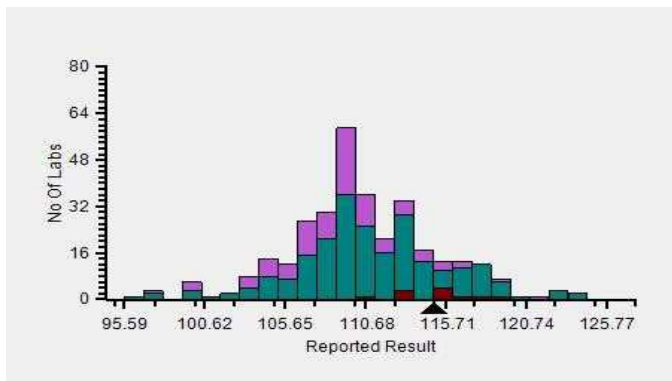
	N	Mean	SD	CV%	Excluded
All Methods	322	110.71	5.10	4.60	6
ISE direct - (Your Method)	232	111.36	5.29	4.75	3
Sensa Core ST 200 plus - (Your Analyzer)	11	115.02	2.17	1.89	--

Evaluation Based On - Method wise Peer Grouping

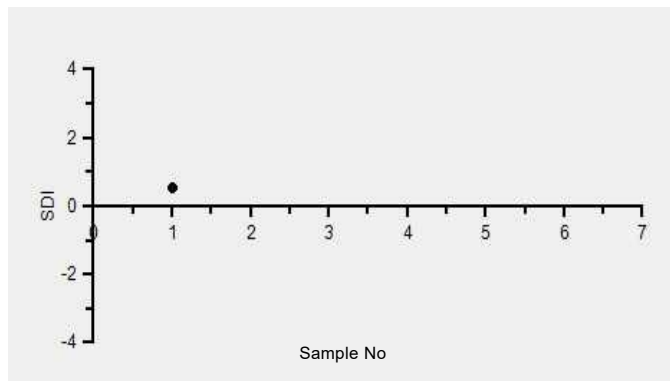
Your Result	115.00	SDI / z-Score	0.52
Assigned Value	111.40	Average SDI	0.54
SDPA	6.870	Uncertainty of AV	0.38
Standard Unit Result Val	115.00	%DEV	-0.01

Note : # - Not evaluated / Bimodal distribution
X : SDI more than 4

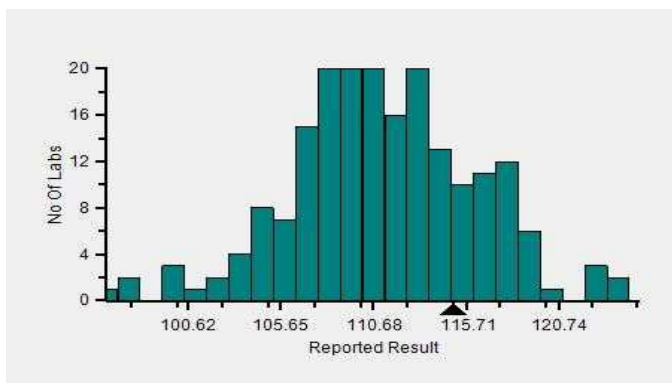
Frequency Histogram



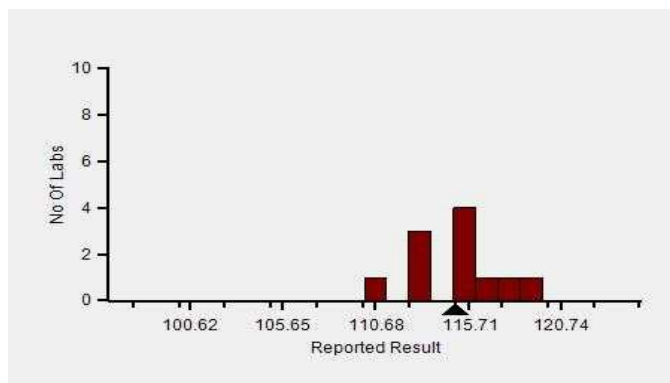
Z-Score Trend - Within Round



Frequency Histogram Your Method



Frequency Histogram Your Analyzer



Lab : 856

Cycle No : 230412

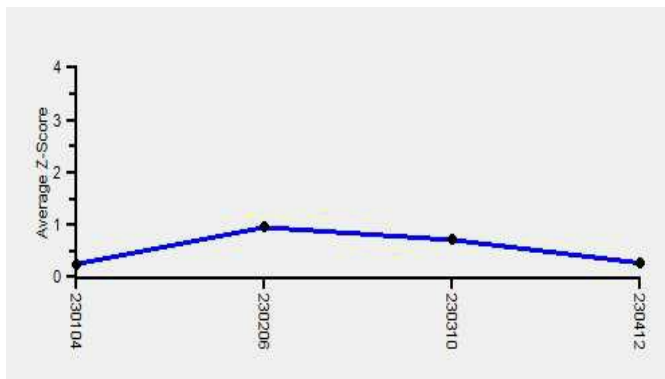
Lab Name : CLINICAL BIOCHEMISTRY LABORATORY

Sample No : 01

Report Date : 13/02/2024

Sample Date : 23/12/2023

Frequency Histogram Your Method



Note : SDI with * marked are not considered for evaluation

Comments :

Biochemistry, Sodium		N	Mean	SD	CV%	Excluded
	All Analyzer	322	110.71	5.10	4.60	6
Your Analyzer :	Sensa Core ST 200 plus	11	115.02	2.17	1.89	-
	Fuji Dri-Chem NX500/i	37	112.00	1.78	1.59	-
	Fuji Dri-Chem NX500/i	36	112.08	1.73	1.54	-
	Roche cobas c 311	29	109.12	3.16	2.90	-
	Roche cobas c 311	28	109.02	3.17	2.91	-
	ACCULYTE-3P	20	106.81	5.52	5.16	-
	Fuji Dri-Chem NX600	17	110.02	5.97	5.42	-
	Roche AVL 9180	15	108.05	5.58	5.16	1

Remarks: Interpretation of your reports

- a) If your SDI lies between +/- 2.0 SDI then your results are well within limits.
- b) If your SDI lies between +/-2.0 to 2.99 SDI then it is a warning alert flag.
- c) If your SDI is +/- 3.0 SDI or more then it is an action alert flag.

Interpretation when an analyte is reported for multiple samples in a Round:

- a) Reported on 2 samples:
 - Two out of two pass - Acceptable performance
 - One out of two pass - Review for random error & take action if appropriate
 - Both failed - Unacceptable performance, Review for systematic error
- b) Reported on 3 samples:
 - All pass - Acceptable performance
 - Two out of three pass - Review for random error & take action if appropriate
 - One out of three pass - Unacceptable performance, Review for systematic error
 - All failed - Unacceptable performance, Review for systematic error



Lab : 856

Cycle No : 230412

Lab Name : CLINICAL BIOCHEMISTRY LABORATORY

Sample No : 01

Report Date : 13/02/2024

Sample Date : 23/12/2023

Biochemistry, Total Protein, g/dL

Comparative Statistics

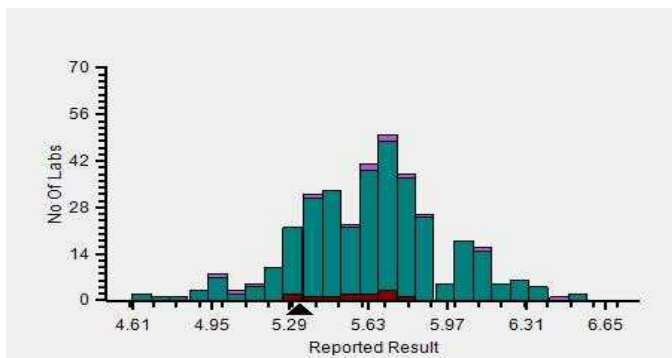
	N	Mean	SD	CV%	Excluded
All Methods	351	5.62	0.33	5.94	7
Biuret - (Your Method)	346	5.63	0.33	5.88	5
Beckman Coulter DxC 700 AU - (Your Analyzer)	12	5.55	0.16	2.86	--

Your Result	5.33	SDI / z-Score	-0.64
Assigned Value	5.60	Average SDI	-0.59
SDPA	0.420	Uncertainty of AV	0.02
Standard Unit Result Val	5.33	%DEV	-4.00

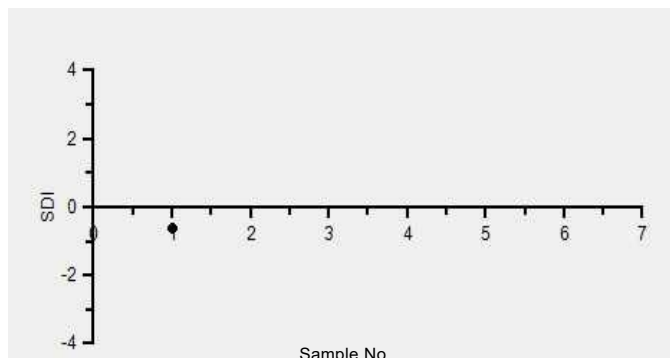
Note : # - Not evaluated / Bimodal distribution

X : SDI more than 4

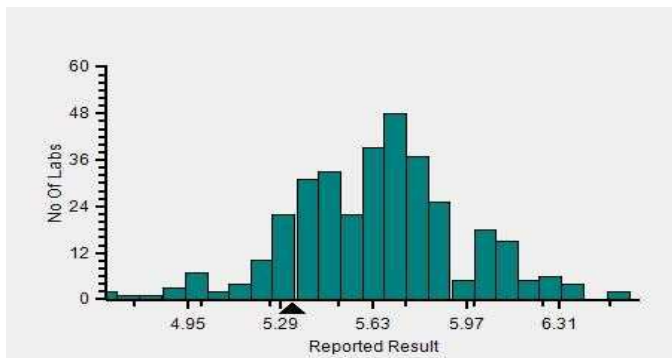
Frequency Histogram



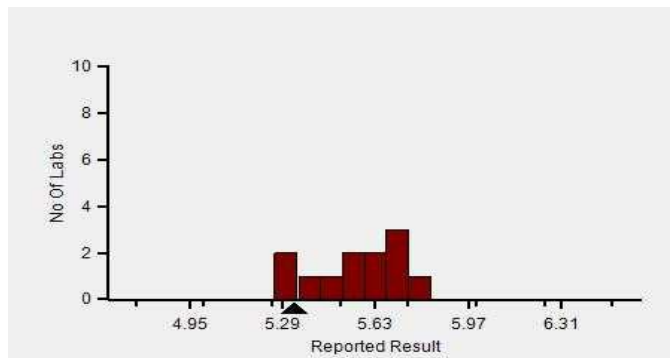
Z-Score Trend - Within Round



Frequency Histogram Your Method



Frequency Histogram Your Analyzer



Lab : 856

Cycle No : 230412

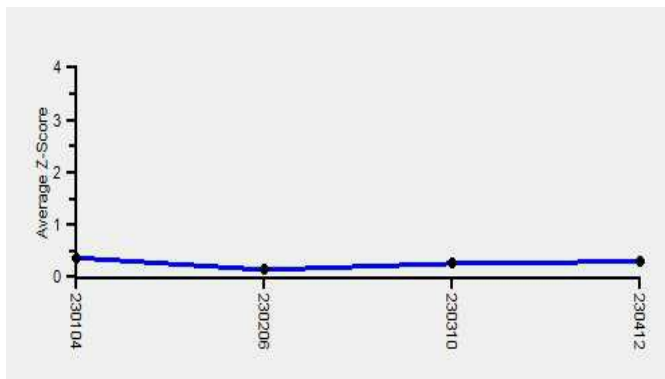
Lab Name : CLINICAL BIOCHEMISTRY LABORATORY

Sample No : 01

Report Date : 13/02/2024

Sample Date : 23/12/2023

Frequency Histogram Your Method



Note : SDI with * marked are not considered for evaluation

Comments :

Biochemistry, Total Protein		N	Mean	SD	CV%	Excluded
	All Analyzer	351	5.62	0.33	5.94	7
Your Analyzer :	Beckman Coulter DxC 700 AU	12	5.55	0.16	2.86	-
	Erba EM 200	42	5.61	0.32	5.76	1
	Erba EM 200	41	5.61	0.33	5.83	1
	Roche cobas c 311	39	5.68	0.14	2.45	-
	Roche cobas c 311	38	5.68	0.14	2.48	-
	Fuji Dri-Chem NX500/i	30	5.86	0.28	4.73	-
	Diasys 200 Pro	25	5.55	0.43	7.80	-
	Roche cobas c 111	24	5.49	0.40	7.34	1

Remarks: Interpretation of your reports

- a) If your SDI lies between +/- 2.0 SDI then your results are well within limits.
- b) If your SDI lies between +/-2.0 to 2.99 SDI then it is a warning alert flag.
- c) If your SDI is +/- 3.0 SDI or more then it is an action alert flag.

Interpretation when an analyte is reported for multiple samples in a Round:

- a) Reported on 2 samples:
 - Two out of two pass - Acceptable performance
 - One out of two pass - Review for random error & take action if appropriate
 - Both failed - Unacceptable performance, Review for systematic error
- b) Reported on 3 samples:
 - All pass - Acceptable performance
 - Two out of three pass - Review for random error & take action if appropriate
 - One out of three pass - Unacceptable performance, Review for systematic error
 - All failed - Unacceptable performance, Review for systematic error



Lab : 856

Cycle No : 230412

Lab Name : CLINICAL BIOCHEMISTRY LABORATORY

Sample No : 01

Report Date : 13/02/2024

Sample Date : 23/12/2023

Biochemistry, Triglycerides, mg/dl

Comparative Statistics

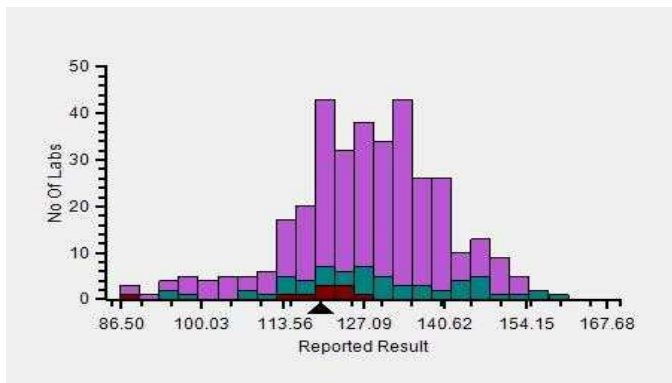
	N	Mean	SD	CV%	Excluded
All Methods	346	126.98	13.55	10.67	6
GPO-POD - (Your Method)	65	127.11	16.23	12.77	1
Beckman Coulter DxC 700 AU - (Your Analyzer)	12	112.47	16.53	14.70	--

Evaluation Based On - Equipment wise Peer Grouping

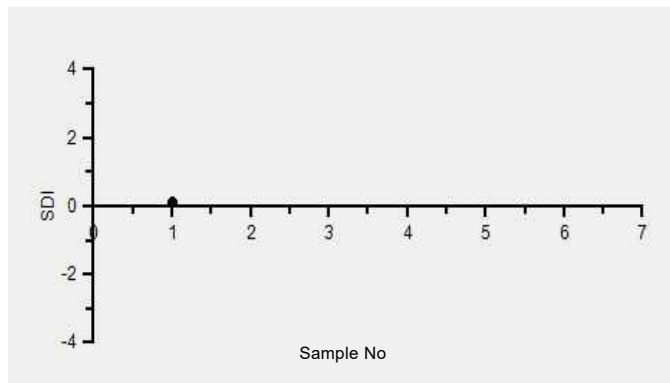
Your Result	119.90	SDI / z-Score	0.11
Assigned Value	117.71	Average SDI	0.00
SDPA	19.629	Uncertainty of AV	5.78
Standard Unit Result Val	119.90	%DEV	6.60

Note : # - Not evaluated / Bimodal distribution
X : SDI more than 4

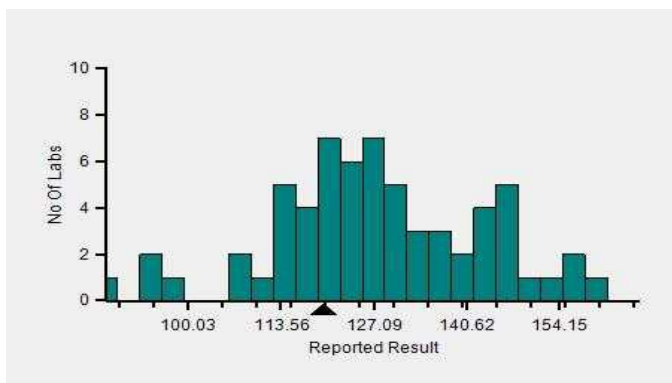
Frequency Histogram



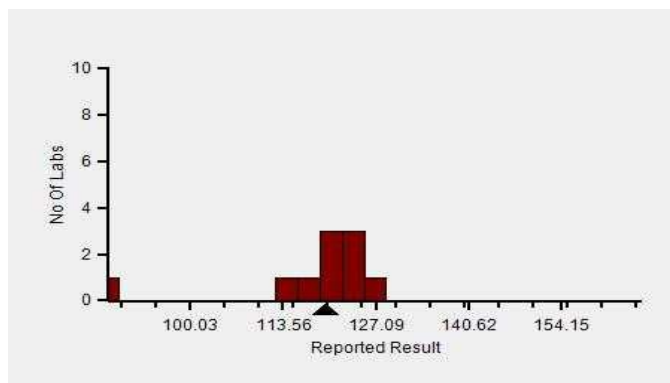
Z-Score Trend - Within Round



Frequency Histogram Your Method



Frequency Histogram Your Analyzer



Lab : 856

Cycle No : 230412

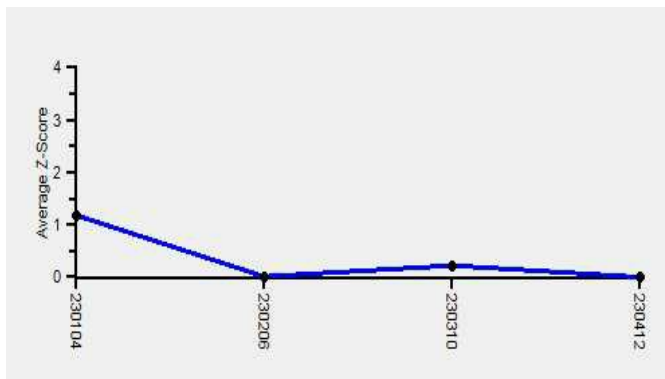
Lab Name : CLINICAL BIOCHEMISTRY LABORATORY

Sample No : 01

Report Date : 13/02/2024

Sample Date : 23/12/2023

Frequency Histogram Your Method



Note : SDI with * marked are not considered for evaluation

Comments :

Biochemistry, Triglycerides		N	Mean	SD	CV%	Excluded
	All Analyzer	346	126.98	13.55	10.67	6
Your Analyzer :	Beckman Coulter DxC 700 AU	12	112.47	16.53	14.70	-
	Erba EM 200	39	123.99	11.25	9.07	-
	Roche cobas c 311	39	129.41	8.95	6.92	1
	Erba EM 200	38	124.11	11.37	9.16	-
	Roche cobas c 311	38	129.10	8.86	6.87	1
	Fuji Dri-Chem NX500/i	29	141.22	7.75	5.49	-
	Diasys 200 Pro	25	122.05	9.74	7.98	-
	Diasys 200 Pro	24	122.35	9.83	8.03	-

Remarks: Interpretation of your reports

- a) If your SDI lies between +/- 2.0 SDI then your results are well within limits.
- b) If your SDI lies between +/-2.0 to 2.99 SDI then it is a warning alert flag.
- c) If your SDI is +/- 3.0 SDI or more then it is an action alert flag.

Interpretation when an analyte is reported for multiple samples in a Round:

- a) Reported on 2 samples:
 - Two out of two pass - Acceptable performance
 - One out of two pass - Review for random error & take action if appropriate
 - Both failed - Unacceptable performance, Review for systematic error
- b) Reported on 3 samples:
 - All pass - Acceptable performance
 - Two out of three pass - Review for random error & take action if appropriate
 - One out of three pass - Unacceptable performance, Review for systematic error
 - All failed - Unacceptable performance, Review for systematic error



Lab : 856

Cycle No : 230412

Lab Name : CLINICAL BIOCHEMISTRY LABORATORY

Sample No : 01

Report Date : 13/02/2024

Sample Date : 23/12/2023

Biochemistry, Urea, mg/dl

Comparative Statistics

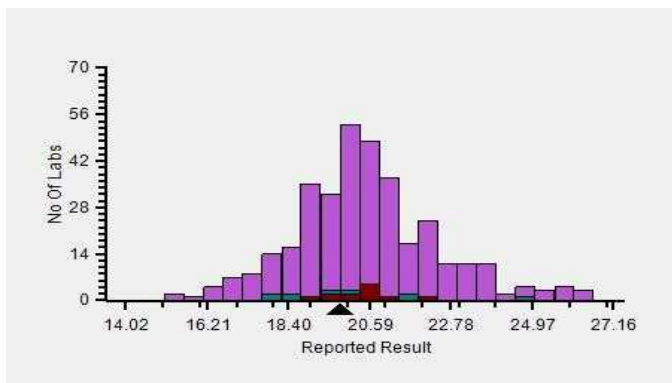
	N	Mean	SD	CV%	Excluded
All Methods	355	20.57	2.17	10.57	15
Kinetic UV Urease-GLDH - (Your Method)	20	19.83	2.44	12.29	--
Beckman Coulter DxC 700 AU - (Your Analyzer)	12	20.33	0.75	3.69	--

Your Result	19.80	SDI / z-Score	-0.44
Assigned Value	20.58	Average SDI	-0.38
SDPA	1.770	Uncertainty of AV	0.34
Standard Unit Result Val	19.80	%DEV	-2.60

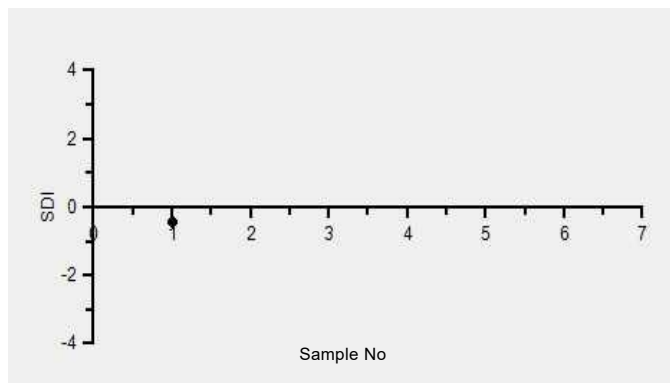
Note : # - Not evaluated / Bimodal distribution

X : SDI more than 4

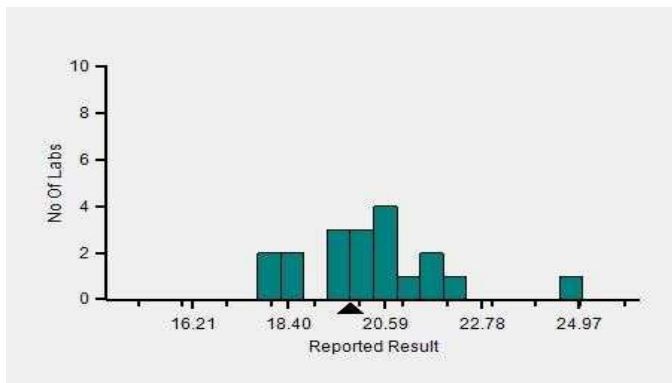
Frequency Histogram



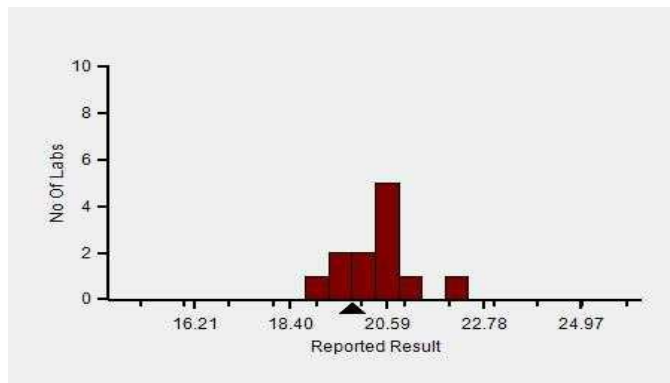
Z-Score Trend - Within Round



Frequency Histogram Your Method



Frequency Histogram Your Analyzer



Lab : 856

Cycle No : 230412

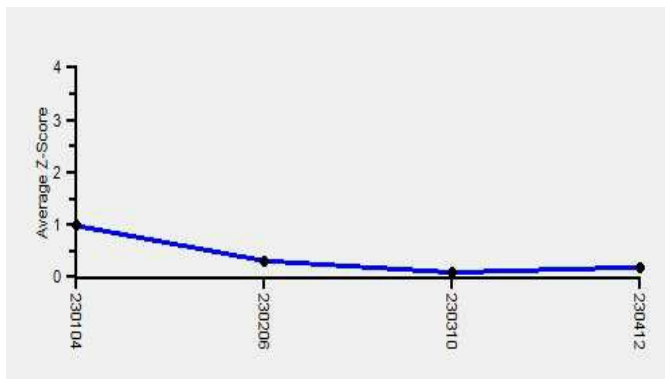
Lab Name : CLINICAL BIOCHEMISTRY LABORATORY

Sample No : 01

Report Date : 13/02/2024

Sample Date : 23/12/2023

Frequency Histogram Your Method



Note : SDI with * marked are not considered for evaluation

Comments :

Biochemistry, Urea		N	Mean	SD	CV%	Excluded
	All Analyzer	355	20.57	2.17	10.57	15
Your Analyzer :	Beckman Coulter DxC 700 AU	12	20.33	0.75	3.69	-
	Erba EM 200	42	20.47	2.29	11.21	1
	Erba EM 200	41	20.56	2.24	10.90	1
	Roche cobas c 311	39	20.23	0.94	4.64	1
	Roche cobas c 311	38	20.23	0.94	4.64	1
	Fuji Dri-Chem NX500/i	29	20.44	0.77	3.74	1
	Diasys 200 Pro	25	23.05	3.18	13.81	1
	Roche cobas c 111	24	19.50	1.06	5.41	-

Remarks: Interpretation of your reports

- a) If your SDI lies between +/- 2.0 SDI then your results are well within limits.
- b) If your SDI lies between +/-2.0 to 2.99 SDI then it is a warning alert flag.
- c) If your SDI is +/- 3.0 SDI or more then it is an action alert flag.

Interpretation when an analyte is reported for multiple samples in a Round:

a) Reported on 2 samples:

- Two out of two pass - Acceptable performance
- One out of two pass - Review for random error & take action if appropriate
- Both failed - Unacceptable performance, Review for systematic error

b) Reported on 3 samples:

- All pass - Acceptable performance
- Two out of three pass - Review for random error & take action if appropriate
- One out of three pass - Unacceptable performance, Review for systematic error
- All failed - Unacceptable performance, Review for systematic error

Lab : 856

Cycle No : 230412

Lab Name : CLINICAL BIOCHEMISTRY LABORATORY

Sample No : 01

Report Date : 13/02/2024

Sample Date : 23/12/2023

Biochemistry, Uric Acid, mg/dl

Comparative Statistics

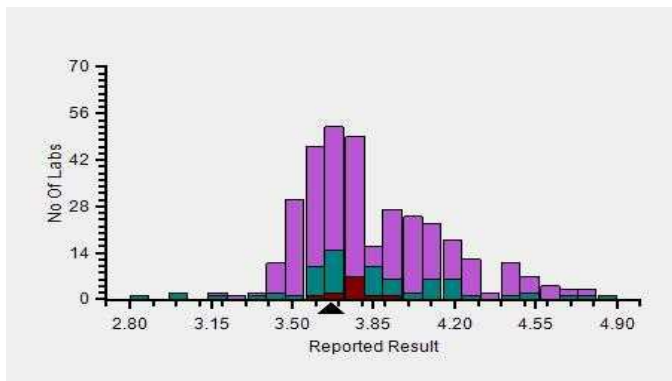
	N	Mean	SD	CV%	Excluded
All Methods	348	3.85	0.34	8.91	9
Uricase - (Your Method)	80	3.82	0.39	10.17	1
Beckman Coulter DxC 700 AU - (Your Analyzer)	12	3.77	0.09	2.28	--

Evaluation Based On - Equipment wise Peer Grouping

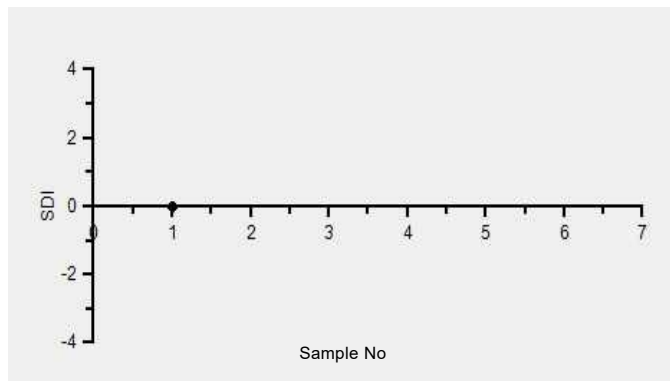
Your Result	3.67	SDI / z-Score	0.00
Assigned Value	3.67	Average SDI	0.10
SDPA	0.310	Uncertainty of AV	0.02
Standard Unit Result Val	3.67	%DEV	-2.57

Note : # - Not evaluated / Bimodal distribution
X : SDI more than 4

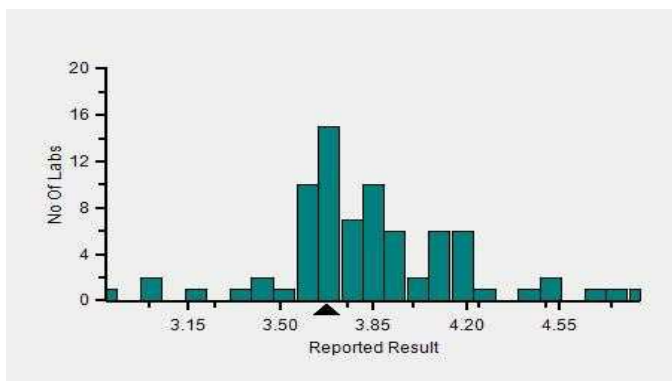
Frequency Histogram



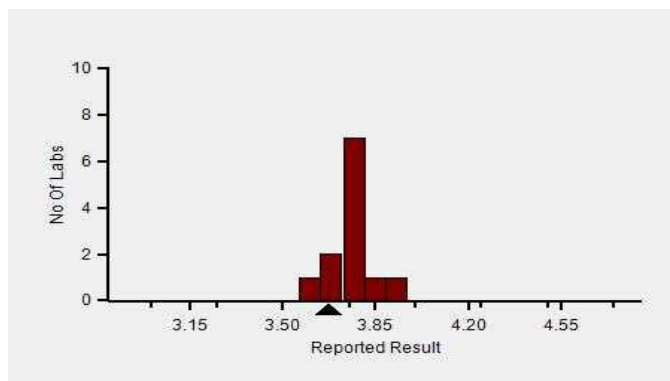
Z-Score Trend - Within Round



Frequency Histogram Your Method



Frequency Histogram Your Analyzer



Lab : 856

Cycle No : 230412

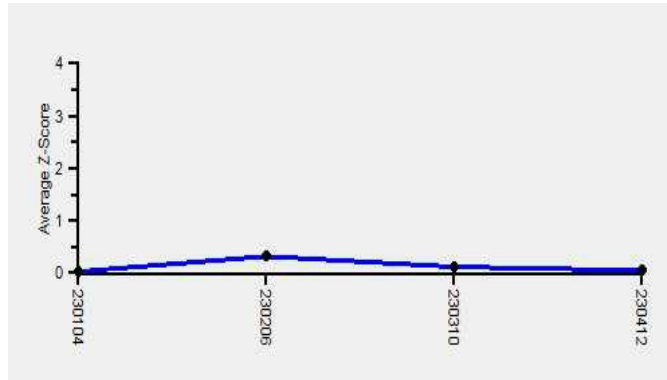
Lab Name : CLINICAL BIOCHEMISTRY LABORATORY

Sample No : 01

Report Date : 13/02/2024

Sample Date : 23/12/2023

Frequency Histogram Your Method



Note : SDI with * marked are not considered for evaluation

Comments :

Biochemistry, Uric Acid		N	Mean	SD	CV%	Excluded
	All Analyzer	348	3.85	0.34	8.91	9
Your Analyzer :	Beckman Coulter DxC 700 AU	12	3.77	0.09	2.28	-
	Erba EM 200	40	4.04	0.35	8.56	1
	Erba EM 200	39	4.04	0.35	8.68	1
	Roche cobas c 311	38	3.63	0.12	3.28	1
	Roche cobas c 311	37	3.62	0.11	3.06	1
	Fuji Dri-Chem NX500/i	28	4.14	0.29	6.90	-
	Diasys 200 Pro	25	3.62	0.41	11.24	-
	Roche cobas c 111	24	3.64	0.21	5.63	-

Remarks: Interpretation of your reports

- a) If your SDI lies between +/- 2.0 SDI then your results are well within limits.
- b) If your SDI lies between +/-2.0 to 2.99 SDI then it is a warning alert flag.
- c) If your SDI is +/- 3.0 SDI or more then it is an action alert flag.

Interpretation when an analyte is reported for multiple samples in a Round:

- a) Reported on 2 samples:
 - Two out of two pass - Acceptable performance
 - One out of two pass - Review for random error & take action if appropriate
 - Both failed - Unacceptable performance, Review for systematic error
- b) Reported on 3 samples:
 - All pass - Acceptable performance
 - Two out of three pass - Review for random error & take action if appropriate
 - One out of three pass - Unacceptable performance, Review for systematic error
 - All failed - Unacceptable performance, Review for systematic error

Dr. Puneet Kumar Nigam

Dr Puneet Kumar Nigam
PT coordinator & Technical Manager, MHL EQAS
Unit No. 409-416.
Commercial Building - 1A
Kohinoor Mall, Kirool Road, Kurla (W),
Mumbai - 400070

This is a computer generated report hence signature is not required



PC-1022

End of Report