



mindray

BC-6200

Parameter	Result	Unit	Parameter	Result	Unit
WBC	10.48	10 <sup>9</sup> /L	RBC	4.64	10 <sup>6</sup> /L
Neut	6.54	10 <sup>9</sup> /L	HGB	12.5	g/dL
Lymf	2.95	10 <sup>9</sup> /L	HCT	39.5	%
Monf	0.67	10 <sup>9</sup> /L	MCV	85.2	fL
Eosf	0.27	10 <sup>9</sup> /L	MCH	29.9	pg
Basf	0.05	10 <sup>9</sup> /L	MCHC	34.2	g/dL
IMGf	0.04	%	PLCC	H 115	10 <sup>3</sup> /L
Neu%	62.4	%	PLCR	H 45.9	%
Lym%	28.2	%	NRBC#	0.000	10 <sup>9</sup> /L
Mon%	6.4	%	NRBC%	0.00	/100WBC
Eos%	2.6	%			
Bas%	0.4	%			
IMG%	0.4	%			

Exiting standby status...  
[01:25]

Next sample: 102418977-01 AL-WB-CD 3-1 18-07-2024 11:41



**Aspen Diagnostics Pvt. Ltd.**  
(Rapid Diagnostic Group Of Companies)



## Calibration Certificate

Customer Name	HIRA CLINICAL LABORATORY
Address	Civil Hospital Road, Hoshiarpur
Contact Person	Dr.Hira
Instrument	5 Part Automated Haematology Analyzer
Model	BC-6200
Serial No.	TW-97000584
Instrument Status	Under Reagent Rental
Calibration Done On	02/04/2024
Next Calibration Due On	01/04/2025

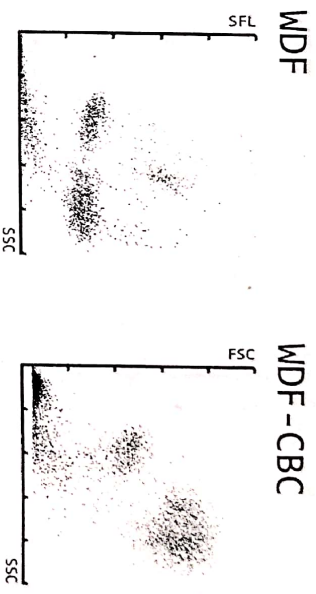
Ravinder kumar  
Service Engineer



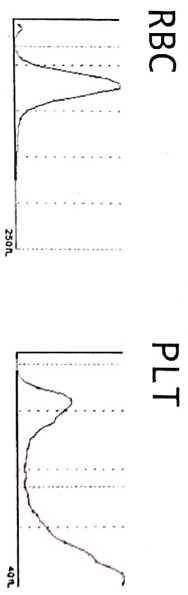
*Rustam Ansari*  
Rustam Ansari  
Area Service Manager

Sample No.: QC-40401401  
 Patient ID:  
 Name:  
 Sample Comment:

Ward:  
 Adapter: 1 Pos: 1 2024/04/01 08:17:31 WB  
 Doctor:  
 Birth:  
 Sex:  
 Nickname: XN-L



WBC	2.62	[10 <sup>3</sup> /uL]		
RBC	2.27	[10 <sup>6</sup> /uL]		
HGB	5.6	[g/dL]		
HCT	16.5	[%]		
MCV	72.7	[fL]		
MCH	24.7	[pg]		
MCHC	33.9	[g/dL]		
PLT	68	[10 <sup>3</sup> /uL]		
RDM-SD	48.3	[fL]		
RDM-CV	18.3	[%]		
PDM	10.8	[fL]		
MPV	11.1	[fL]		
P-LCR	32.1	[%]		
CT	0.08	[%]		
NEUT	1.12	[10 <sup>3</sup> /uL]	42.7	[%]
LYMPH	0.84	[10 <sup>3</sup> /uL]	32.1	[%]
MONO	0.23	[10 <sup>3</sup> /uL]	8.8	[%]
EO	0.29	[10 <sup>3</sup> /uL]	11.1	[%]
BASO	0.14	[10 <sup>3</sup> /uL]	5.3	[%]
IG	0.31	[10 <sup>3</sup> /uL]	11.8	[%]



WBC-BF	[10 <sup>3</sup> /uL]	
RBC-BF	[10 <sup>6</sup> /uL]	
MN	[10 <sup>3</sup> /uL]	
PMN	[10 <sup>3</sup> /uL]	
C-BF#	[10 <sup>3</sup> /uL]	

WBC IP Message

RBC IP Message

PLT IP Message