

Lab : 1352

Lab Name : TATA 1MG LABS JAIPUR

Report Date : 18/10/2024

Cycle No : 240207

Sample No : 01

Round Open Date : 08/08/2024

Biochemistry, Albumin, g/dL

Comparative Statistics

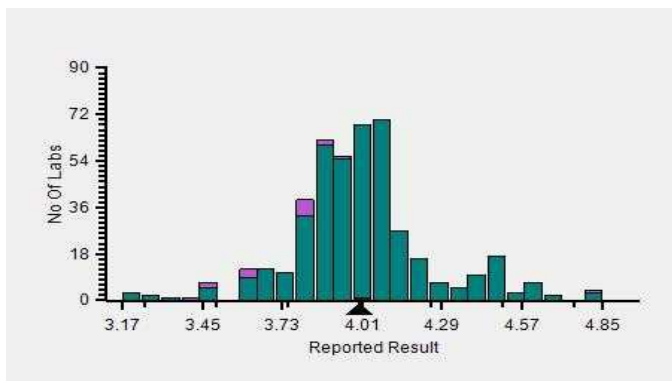
	N	Mean	SD	CV%	Excluded
All Methods	451	4.01	0.28	6.98	4
Bromocresol Green (BCG) - (Your Method)	435	4.02	0.28	6.84	4
Siemens Atellica CI 1900 - (Your Analyzer)	1	--	--	--	--

Your Result	4.00	SDI / z-Score	0.37
Assigned Value	3.91	Average SDI	0.00
SDPA	0.240	Uncertainty of AV	0.02
Standard Unit Result Val	4.00	%DEV	-0.57

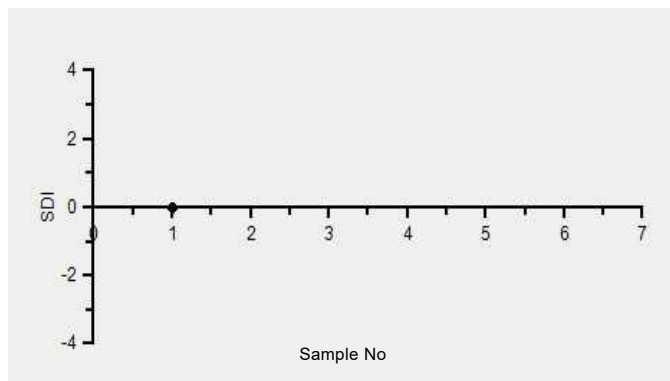
Note : # - Not evaluated / Bimodal distribution

X : SDI more than 4

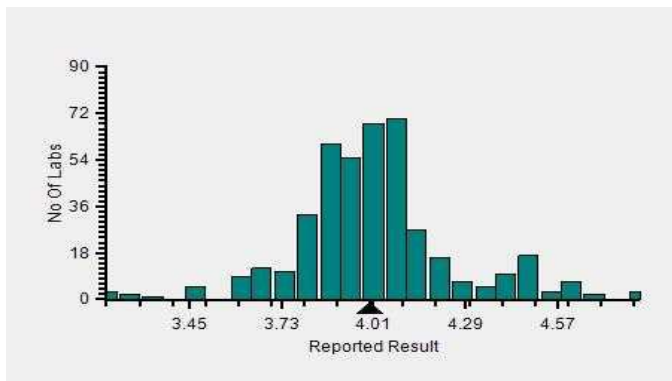
Frequency Histogram



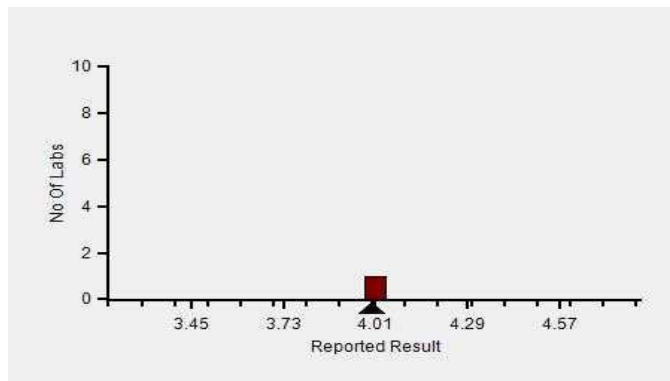
Z-Score Trend - Within Round



Frequency Histogram Your Method



Frequency Histogram Your Analyzer



Lab : 1352

Lab Name : TATA 1MG LABS JAIPUR

Report Date : 18/10/2024

Cycle No : 240207

Sample No : 01

Round Open Date : 08/08/2024

Frequency Histogram Your Method



Note : SDI with * marked are not considered for evaluation

Comments :

Biochemistry, Albumin		N	Mean	SD	CV%	Excluded
	All Analyzer	451	4.01	0.28	6.98	4
Your Analyzer :	Siemens Atellica CI 1900	1	-	-	-	-
	Erba EM 200	42	3.96	0.21	5.18	-
	Roche cobas c 311	41	3.98	0.10	2.56	-
	Diasys 200 Pro	36	4.00	0.26	6.56	1
	Erba XL-200	35	4.06	0.14	3.55	-
	Roche cobas c 111	26	4.02	0.19	4.60	1
	Fuji Dri-Chem NX500/i	24	4.59	0.28	6.05	-
	Beckman Coulter DxC 700 AU	23	3.86	0.06	1.58	-

Remarks: Interpretation of your reports

- a) If your SDI lies between +/- 2.0 SDI then your results are well within limits.
- b) If your SDI lies between +/-2.0 to 2.99 SDI then it is a warning alert flag.
- c) If your SDI is +/- 3.0 SDI or more then it is an action alert flag.

Interpretation when an analyte is reported for multiple samples in a Round:

- a) Reported on 2 samples:
 - Two out of two pass - Acceptable performance
 - One out of two pass - Review for random error & take action if appropriate
 - Both failed - Unacceptable performance, Review for systematic error
- b) Reported on 3 samples:
 - All pass - Acceptable performance
 - Two out of three pass - Review for random error & take action if appropriate
 - One out of three pass - Unacceptable performance, Review for systematic error
 - All failed - Unacceptable performance, Review for systematic error



Lab : 1352

Lab Name : TATA 1MG LABS JAIPUR

Report Date : 18/10/2024

Cycle No : 240207

Sample No : 01

Round Open Date : 08/08/2024

Biochemistry, ALP, U/L

Comparative Statistics

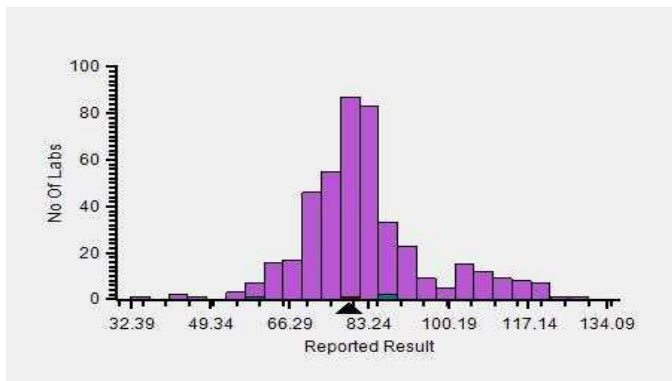
	N	Mean	SD	CV%	Excluded
All Methods	450	83.41	16.91	20.27	9
PNPP, DEA Buffer - (Your Method)	4	83.75	4.11	4.91	1
Siemens Atellica CI 1900 - (Your Analyzer)	1	--	--	--	--

Evaluation Based On - Method wise Peer Grouping

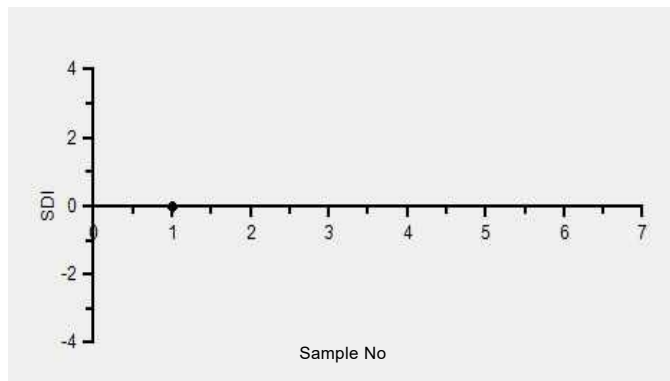
Your Result	79.00	SDI / z-Score	-0.07
Assigned Value	80.06	Average SDI	0.00
SDPA	15.900	Uncertainty of AV	0.54
Standard Unit Result Val	79.00	%DEV	-5.67

Note : # - Not evaluated / Bimodal distribution
X : SDI more than 4

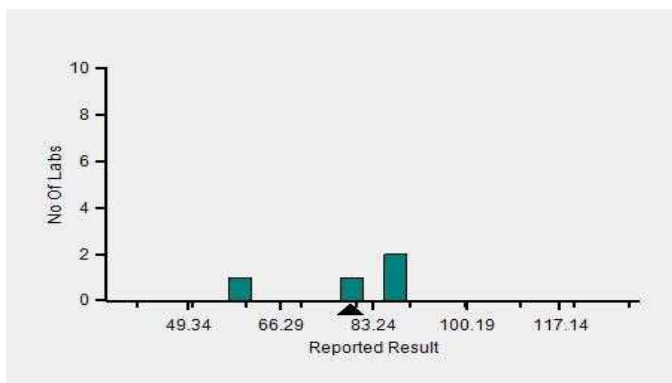
Frequency Histogram



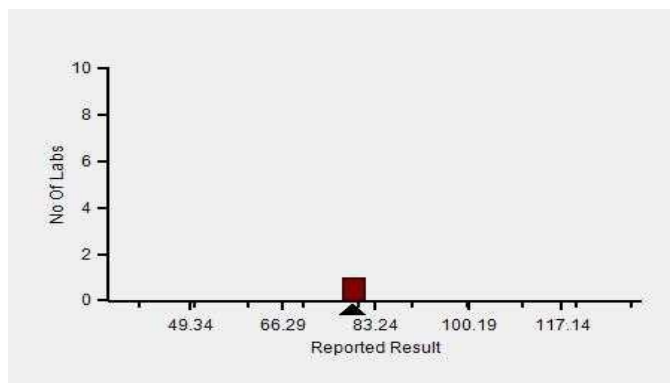
Z-Score Trend - Within Round



Frequency Histogram Your Method



Frequency Histogram Your Analyzer



Lab : 1352

Lab Name : TATA 1MG LABS JAIPUR

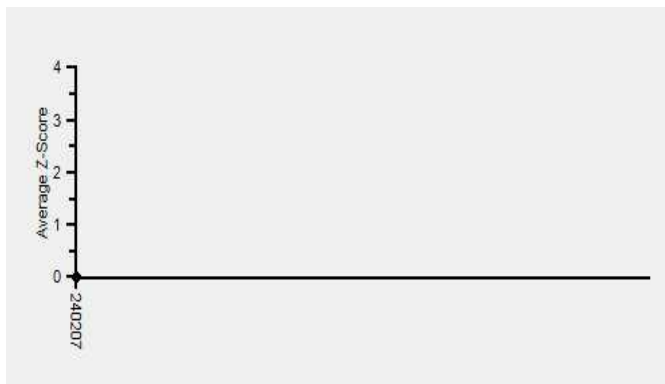
Report Date : 18/10/2024

Cycle No : 240207

Sample No : 01

Round Open Date : 08/08/2024

Frequency Histogram Your Method



Note : SDI with * marked are not considered for evaluation

Comments :

Biochemistry, ALP		N	Mean	SD	CV%	Excluded
	All Analyzer	450	83.41	16.91	20.27	9
Your Analyzer :	Siemens Atellica CI 1900	1	-	-	-	-
	Roche cobas c 311	40	82.30	3.57	4.33	-
	Erba EM 200	39	79.44	12.45	15.68	-
	Erba XL-200	36	74.56	7.12	9.55	-
	Diasys 200 Pro	36	78.17	10.50	13.44	-
	Fuji Dri-Chem NX500/i	27	108.53	11.48	10.58	3
	Roche cobas c 111	25	77.62	5.15	6.63	-
	Beckman Coulter DxC 700 AU	22	77.09	5.04	6.54	-

Remarks: Interpretation of your reports

- a) If your SDI lies between +/- 2.0 SDI then your results are well within limits.
- b) If your SDI lies between +/-2.0 to 2.99 SDI then it is a warning alert flag.
- c) If your SDI is +/- 3.0 SDI or more then it is an action alert flag.

Interpretation when an analyte is reported for multiple samples in a Round:

a) Reported on 2 samples:

- Two out of two pass - Acceptable performance
- One out of two pass - Review for random error & take action if appropriate
- Both failed - Unacceptable performance, Review for systematic error

b) Reported on 3 samples:

- All pass - Acceptable performance
- Two out of three pass - Review for random error & take action if appropriate
- One out of three pass - Unacceptable performance, Review for systematic error
- All failed - Unacceptable performance, Review for systematic error



Lab : 1352

Lab Name : TATA 1MG LABS JAIPUR

Report Date : 18/10/2024

Cycle No : 240207

Sample No : 01

Round Open Date : 08/08/2024

Biochemistry, ALT, U/L

Comparative Statistics

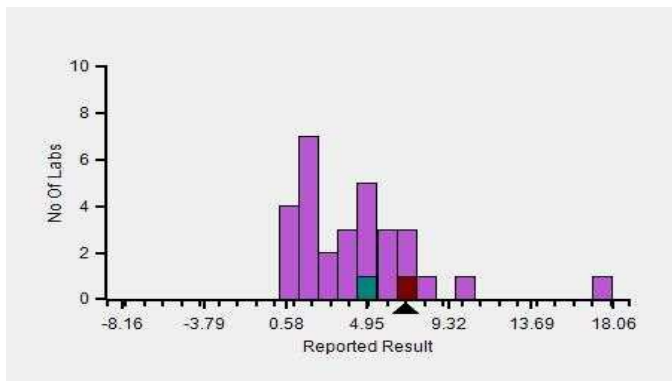
	N	Mean	SD	CV%	Excluded
All Methods	444	5.30	4.54	85.70	417
UV modified IFCC - (Your Method)	10	6.07	1.32	21.66	8
Siemens Atellica CI 1900 - (Your Analyzer)	1	--	--	--	--

Evaluation Based On - Equipment wise Peer Grouping

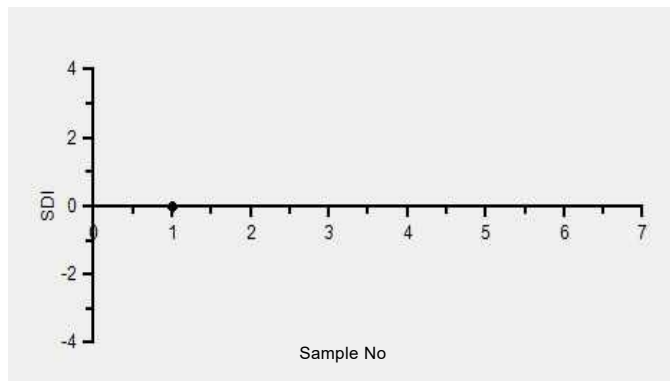
Your Result	7.00	SDI / z-Score	
Assigned Value	#	Average SDI	0.00
SDPA	#	Uncertainty of AV	
Standard Unit Result Val	7.00 #	%DEV	15.32

Note : # - Not evaluated / Bimodal distribution
X : SDI more than 4

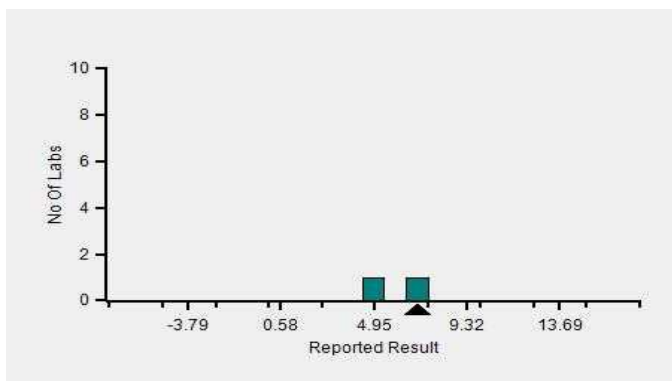
Frequency Histogram



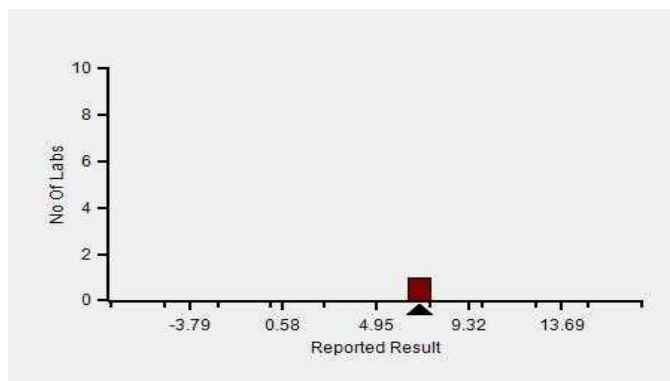
Z-Score Trend - Within Round



Frequency Histogram Your Method



Frequency Histogram Your Analyzer



Lab : 1352

Lab Name : TATA 1MG LABS JAIPUR

Report Date : 18/10/2024

Cycle No : 240207

Sample No : 01

Round Open Date : 08/08/2024

Frequency Histogram Your Method



Note : SDI with * marked are not considered for evaluation

Comments :

Biochemistry, ALT		N	Mean	SD	CV%	Excluded
	All Analyzer	444	5.30	4.54	85.70	417
Your Analyzer :	Siemens Atellica CI 1900	1	-	-	-	-
	Erba EM 200	40	-	-	-	40
	Roche cobas c 311	38	-	-	-	38
	Diasys 200 Pro	36	3.14	1.36	43.26	29
	Erba XL-200	32	5.33	0.58	10.82	29
	Roche cobas c 111	26	-	-	-	26
	Beckman Coulter DxC 700 AU	24	2.60	1.72	66.04	20
	Fuji Dri-Chem NX500/i	23	-	-	-	23

Remarks: Interpretation of your reports

- a) If your SDI lies between +/- 2.0 SDI then your results are well within limits.
- b) If your SDI lies between +/-2.0 to 2.99 SDI then it is a warning alert flag.
- c) If your SDI is +/- 3.0 SDI or more then it is an action alert flag.

Interpretation when an analyte is reported for multiple samples in a Round:

a) Reported on 2 samples:

- Two out of two pass - Acceptable performance
- One out of two pass - Review for random error & take action if appropriate
- Both failed - Unacceptable performance, Review for systematic error

b) Reported on 3 samples:

- All pass - Acceptable performance
- Two out of three pass - Review for random error & take action if appropriate
- One out of three pass - Unacceptable performance, Review for systematic error
- All failed - Unacceptable performance, Review for systematic error



Lab : 1352

Lab Name : TATA 1MG LABS JAIPUR

Report Date : 18/10/2024

Cycle No : 240207

Sample No : 01

Round Open Date : 08/08/2024

Biochemistry, AST, U/L

Comparative Statistics

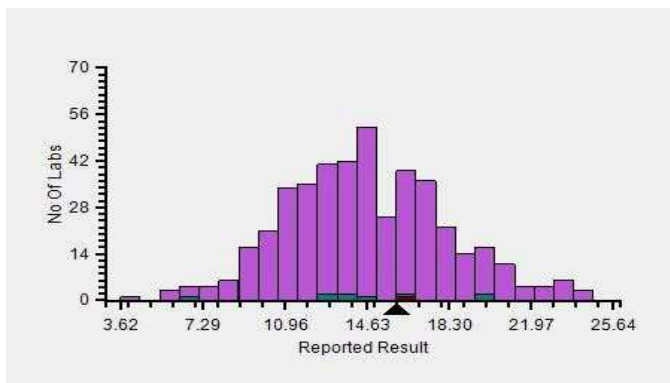
	N	Mean	SD	CV%	Excluded
All Methods	450	14.66	3.66	24.95	11
UV modified IFCC - (Your Method)	10	14.78	3.72	25.18	--
Siemens Atellica CI 1900 - (Your Analyzer)	1	--	--	--	--

Your Result	16.00	SDI / z-Score	-0.09
Assigned Value	16.40	Average SDI	0.00
SDPA	4.475	Uncertainty of AV	0.69
Standard Unit Result Val	16.00	%DEV	8.24

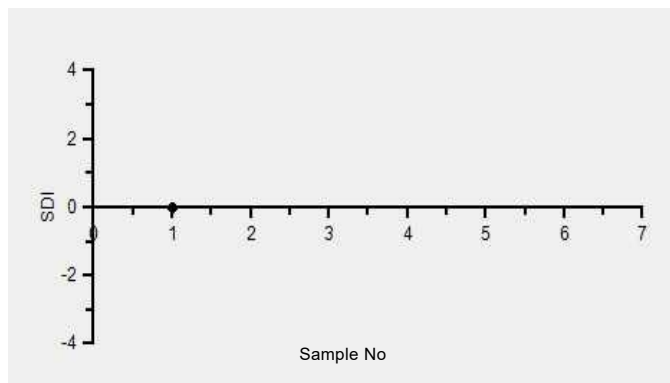
Note : # - Not evaluated / Bimodal distribution

X : SDI more than 4

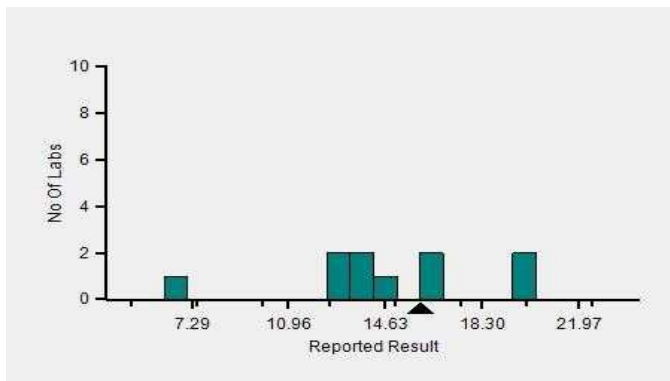
Frequency Histogram



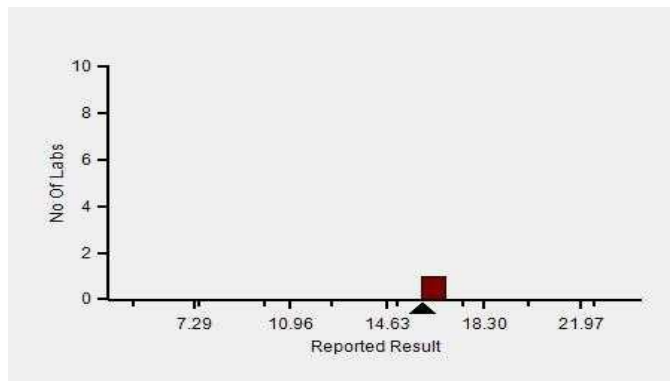
Z-Score Trend - Within Round



Frequency Histogram Your Method



Frequency Histogram Your Analyzer



Lab : 1352

Lab Name : TATA 1MG LABS JAIPUR

Report Date : 18/10/2024

Cycle No : 240207

Sample No : 01

Round Open Date : 08/08/2024

Frequency Histogram Your Method



Note : SDI with * marked are not considered for evaluation

Comments :

Biochemistry, AST		N	Mean	SD	CV%	Excluded
	All Analyzer	450	14.66	3.66	24.95	11
Your Analyzer :	Siemens Atellica CI 1900	1	-	-	-	-
	Erba EM 200	42	13.41	2.88	21.45	3
	Roche cobas c 311	40	12.42	2.72	21.91	-
	Diasys 200 Pro	35	15.72	3.23	20.52	-
	Erba XL-200	34	11.42	2.19	19.18	1
	Roche cobas c 111	27	12.42	1.47	11.86	-
	Fuji Dri-Chem NX500/i	24	15.97	1.68	10.50	-
	Beckman Coulter DxC 700 AU	23	16.58	1.97	11.89	-

Remarks: Interpretation of your reports

- a) If your SDI lies between +/- 2.0 SDI then your results are well within limits.
- b) If your SDI lies between +/-2.0 to 2.99 SDI then it is a warning alert flag.
- c) If your SDI is +/- 3.0 SDI or more then it is an action alert flag.

Interpretation when an analyte is reported for multiple samples in a Round:

a) Reported on 2 samples:

- Two out of two pass - Acceptable performance
- One out of two pass - Review for random error & take action if appropriate
- Both failed - Unacceptable performance, Review for systematic error

b) Reported on 3 samples:

- All pass - Acceptable performance
- Two out of three pass - Review for random error & take action if appropriate
- One out of three pass - Unacceptable performance, Review for systematic error
- All failed - Unacceptable performance, Review for systematic error



Lab : 1352

Lab Name : TATA 1MG LABS JAIPUR

Report Date : 18/10/2024

Cycle No : 240207

Sample No : 01

Round Open Date : 08/08/2024

Biochemistry, Bilirubin Direct, mg/dl

Comparative Statistics

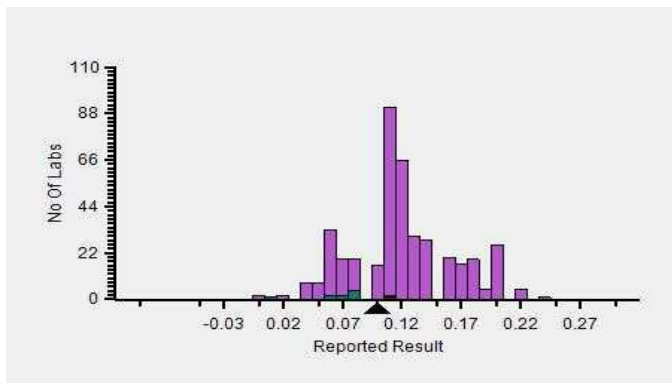
	N	Mean	SD	CV%	Excluded
All Methods	449	0.12	0.05	43.59	38
Vanadate Oxidation - (Your Method)	12	0.08	0.02	20.78	2
Siemens Atellica CI 1900 - (Your Analyzer)	1	--	--	--	--

Evaluation Based On - Equipment wise Peer Grouping

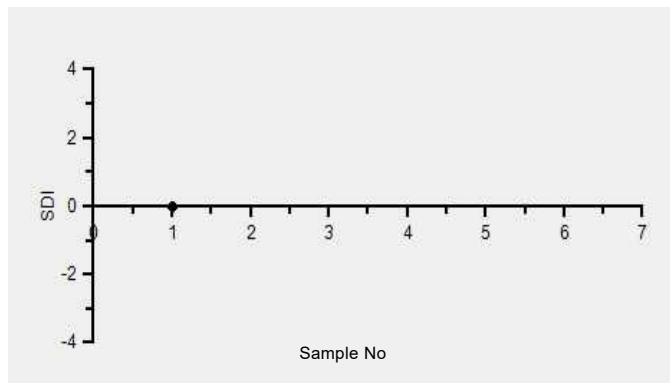
Your Result	0.10	SDI / z-Score	-0.30
Assigned Value	0.11	Average SDI	0.00
SDPA	0.040	Uncertainty of AV	0.00
Standard Unit Result Val	0.10	%DEV	29.87

Note : # - Not evaluated / Bimodal distribution
X : SDI more than 4

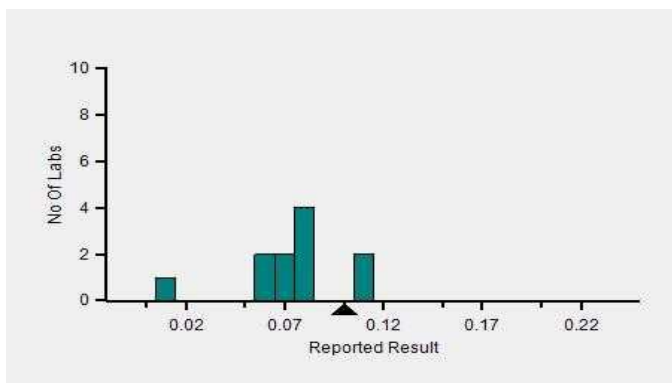
Frequency Histogram



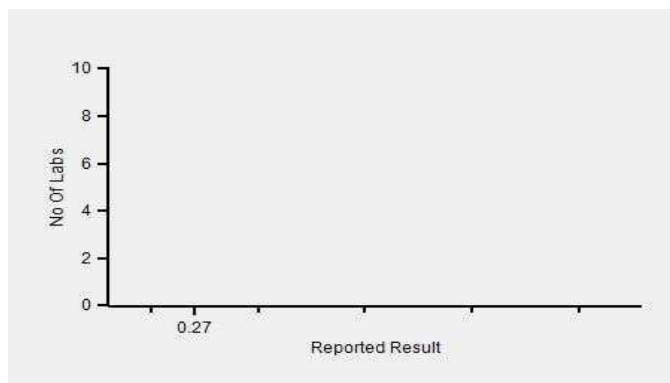
Z-Score Trend - Within Round



Frequency Histogram Your Method



Frequency Histogram Your Analyzer



Lab : 1352

Lab Name : TATA 1MG LABS JAIPUR

Report Date : 18/10/2024

Cycle No : 240207

Sample No : 01

Round Open Date : 08/08/2024

Frequency Histogram Your Method



Note : SDI with * marked are not considered for evaluation

Comments :

Biochemistry, Bilirubin Direct		N	Mean	SD	CV%	Excluded
	All Analyzer	449	0.12	0.05	43.59	38
Your Analyzer :	Siemens Atellica CI 1900	1	-	-	-	-
	Roche cobas c 311	40	0.13	0.04	35.20	1
	Diasys 200 Pro	36	0.13	0.05	36.64	-
	Erba EM 200	35	0.12	0.05	37.10	2
	Erba XL-200	31	0.13	0.03	26.36	-
	Fuji Dri-Chem NX500/i	27	0.13	0.05	34.35	2
	Roche cobas c 111	25	0.12	0.03	27.05	-
	Beckman Coulter DxC 700 AU	23	0.07	0.02	36.36	-

Remarks: Interpretation of your reports

- a) If your SDI lies between +/- 2.0 SDI then your results are well within limits.
- b) If your SDI lies between +/-2.0 to 2.99 SDI then it is a warning alert flag.
- c) If your SDI is +/- 3.0 SDI or more then it is an action alert flag.

Interpretation when an analyte is reported for multiple samples in a Round:

a) Reported on 2 samples:

- Two out of two pass - Acceptable performance
- One out of two pass - Review for random error & take action if appropriate
- Both failed - Unacceptable performance, Review for systematic error

b) Reported on 3 samples:

- All pass - Acceptable performance
- Two out of three pass - Review for random error & take action if appropriate
- One out of three pass - Unacceptable performance, Review for systematic error
- All failed - Unacceptable performance, Review for systematic error



Lab : 1352

Lab Name : TATA 1MG LABS JAIPUR

Report Date : 18/10/2024

Cycle No : 240207

Sample No : 01

Round Open Date : 08/08/2024

Biochemistry, Bilirubin Total, mg/dl

Comparative Statistics

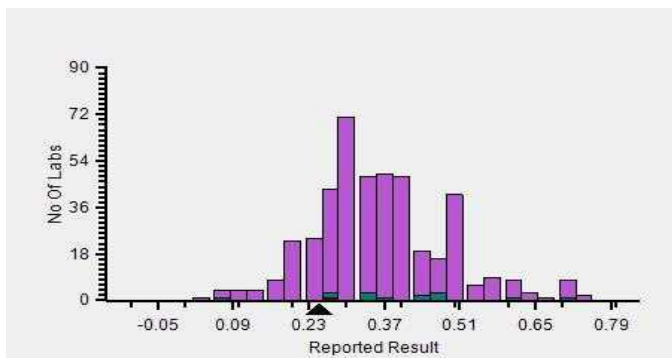
	N	Mean	SD	CV%	Excluded
All Methods	452	0.37	0.14	37.81	8
Vanadate Oxidation - (Your Method)	14	0.39	0.16	41.45	--
Siemens Atellica CI 1900 - (Your Analyzer)	1	--	--	--	--

Your Result	0.25	SDI / z-Score	-0.52
Assigned Value	0.30	Average SDI	0.00
SDPA	0.090	Uncertainty of AV	0.01
Standard Unit Result Val	0.25	%DEV	-35.23

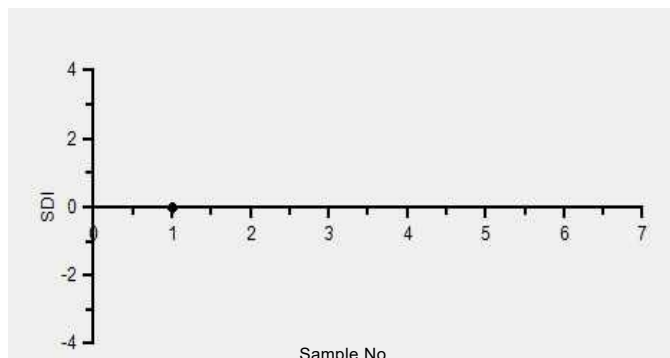
Note : # - Not evaluated / Bimodal distribution

X : SDI more than 4

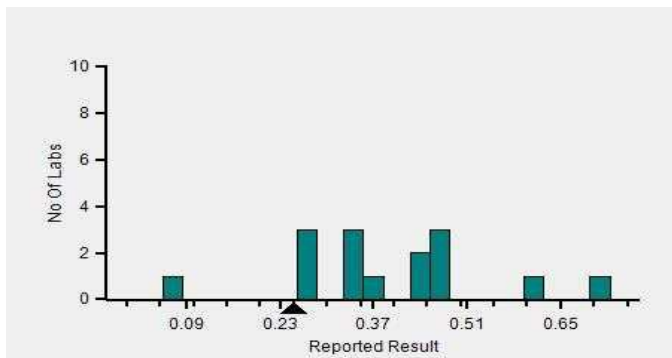
Frequency Histogram



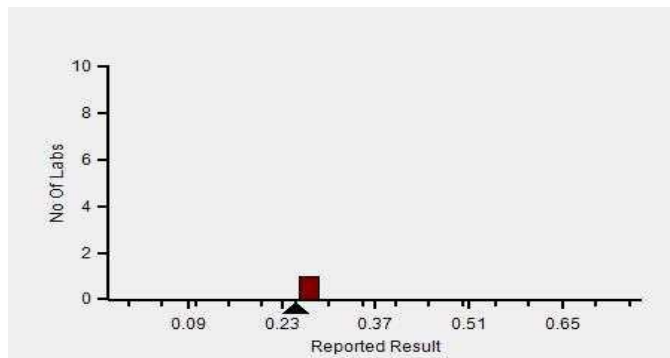
Z-Score Trend - Within Round



Frequency Histogram Your Method



Frequency Histogram Your Analyzer



Lab : 1352

Lab Name : TATA 1MG LABS JAIPUR

Report Date : 18/10/2024

Cycle No : 240207

Sample No : 01

Round Open Date : 08/08/2024

Frequency Histogram Your Method



Note : SDI with * marked are not considered for evaluation

Comments :

Biochemistry, Bilirubin Total		N	Mean	SD	CV%	Excluded
	All Analyzer	452	0.37	0.14	37.81	8
Your Analyzer :	Siemens Atellica CI 1900	1	-	-	-	-
	Roche cobas c 311	41	0.29	0.06	19.11	-
	Erba EM 200	38	0.30	0.08	28.19	-
	Diasys 200 Pro	36	0.46	0.21	45.69	4
	Erba XL-200	35	0.29	0.05	16.32	1
	Fuji Dri-Chem NX500/i	25	0.53	0.11	21.39	-
	Roche cobas c 111	25	0.29	0.06	20.63	-
	Beckman Coulter DxC 700 AU	23	0.43	0.09	21.68	-

Remarks: Interpretation of your reports

- a) If your SDI lies between +/- 2.0 SDI then your results are well within limits.
- b) If your SDI lies between +/-2.0 to 2.99 SDI then it is a warning alert flag.
- c) If your SDI is +/- 3.0 SDI or more then it is an action alert flag.

Interpretation when an analyte is reported for multiple samples in a Round:

- a) Reported on 2 samples:
 - Two out of two pass - Acceptable performance
 - One out of two pass - Review for random error & take action if appropriate
 - Both failed - Unacceptable performance, Review for systematic error
- b) Reported on 3 samples:
 - All pass - Acceptable performance
 - Two out of three pass - Review for random error & take action if appropriate
 - One out of three pass - Unacceptable performance, Review for systematic error
 - All failed - Unacceptable performance, Review for systematic error



Lab : 1352

Lab Name : TATA 1MG LABS JAIPUR

Report Date : 18/10/2024

Cycle No : 240207

Sample No : 01

Round Open Date : 08/08/2024

Biochemistry, Calcium, mg/dl

Comparative Statistics

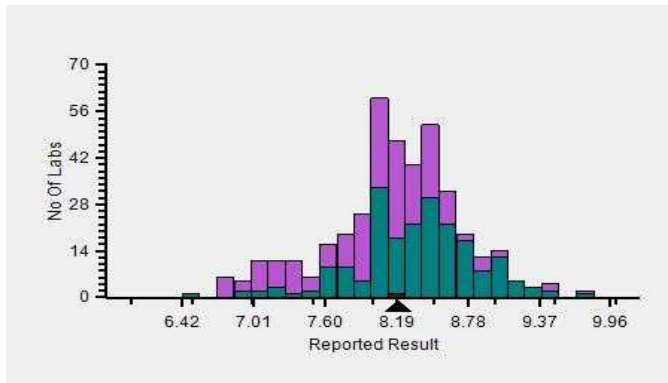
	N	Mean	SD	CV%	Excluded
All Methods	407	8.19	0.58	7.13	4
Arsenazo III - (Your Method)	209	8.36	0.53	6.34	2
Siemens Atellica CI 1900 - (Your Analyzer)	1	--	--	--	--

Evaluation Based On - Equipment wise Peer Grouping

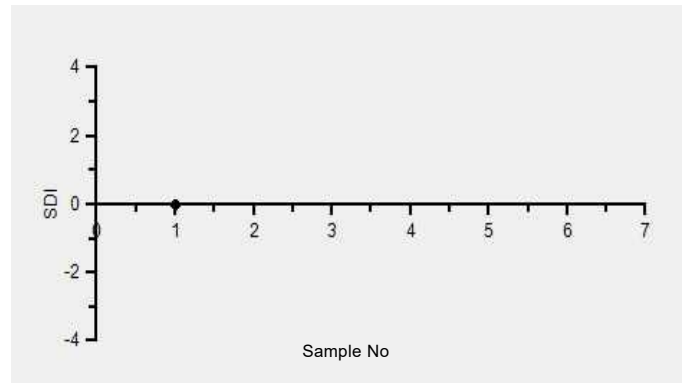
Your Result	8.20	SDI / z-Score	-0.31
Assigned Value	8.35	Average SDI	0.00
SDPA	0.470	Uncertainty of AV	0.04
Standard Unit Result Val	8.20	%DEV	-1.96

Note : # - Not evaluated / Bimodal distribution
X : SDI more than 4

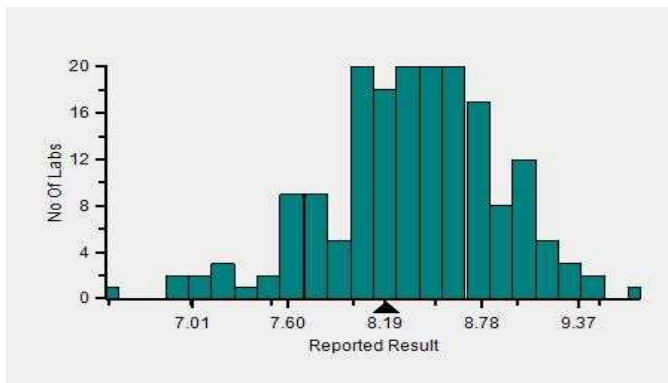
Frequency Histogram



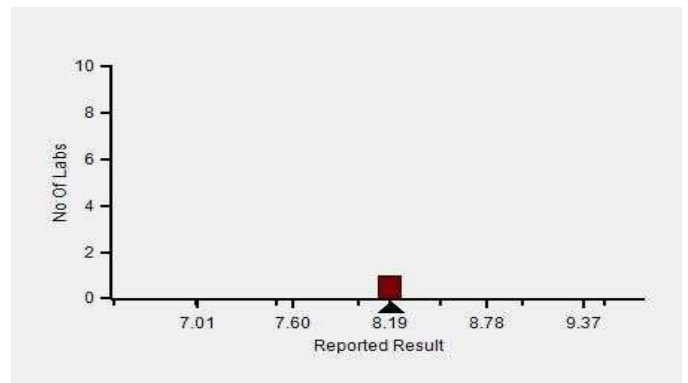
Z-Score Trend - Within Round



Frequency Histogram Your Method



Frequency Histogram Your Analyzer



Lab : 1352

Lab Name : TATA 1MG LABS JAIPUR

Report Date : 18/10/2024

Cycle No : 240207

Sample No : 01

Round Open Date : 08/08/2024

Frequency Histogram Your Method



Note : SDI with * marked are not considered for evaluation

Comments :

Biochemistry, Calcium		N	Mean	SD	CV%	Excluded
	All Analyzer	407	8.19	0.58	7.13	4
Your Analyzer :	Siemens Atellica CI 1900	1	-	-	-	-
	Roche cobas c 311	41	8.15	0.26	3.20	-
	Erba EM 200	32	8.38	0.57	6.83	-
	Diasys 200 Pro	32	8.47	0.57	6.69	-
	Erba XL-200	31	8.26	0.45	5.42	2
	Fuji Dri-Chem NX500/i	26	7.32	0.50	6.80	-
	Beckman Coulter DxC 700 AU	23	8.40	0.19	2.30	-
	Fuji Dri-Chem NX600	21	7.23	0.45	6.16	-

Remarks: Interpretation of your reports

- If your SDI lies between +/- 2.0 SDI then your results are well within limits.
- If your SDI lies between +/-2.0 to 2.99 SDI then it is a warning alert flag.
- If your SDI is +/- 3.0 SDI or more then it is an action alert flag.

Interpretation when an analyte is reported for multiple samples in a Round:

a) Reported on 2 samples:

- Two out of two pass - Acceptable performance
- One out of two pass - Review for random error & take action if appropriate
- Both failed - Unacceptable performance, Review for systematic error

b) Reported on 3 samples:

- All pass - Acceptable performance
- Two out of three pass - Review for random error & take action if appropriate
- One out of three pass - Unacceptable performance, Review for systematic error
- All failed - Unacceptable performance, Review for systematic error



Lab : 1352

Cycle No : 240207

Lab Name : TATA 1MG LABS JAIPUR

Sample No : 01

Report Date : 18/10/2024

Round Open Date : 08/08/2024

Biochemistry, Chloride, mEq/L

Comparative Statistics

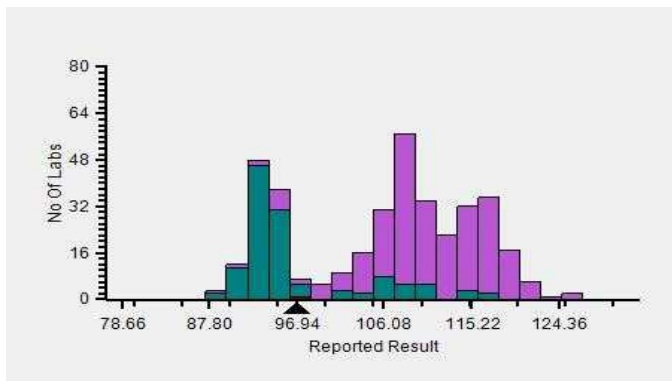
	N	Mean	SD	CV%	Excluded
All Methods	379	106.12	9.13	8.61	5
ISE indirect - (Your Method)	125	96.95	6.71	6.92	3
Siemens Atellica CI 1900 - (Your Analyzer)	1	--	--	--	--

Evaluation Based On - Method wise Peer Grouping

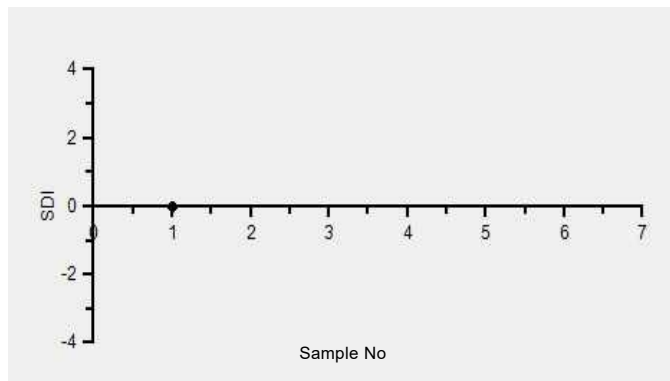
Your Result	96.90	SDI / z-Score	-0.09
Assigned Value	97.53	Average SDI	0.00
SDPA	7.238	Uncertainty of AV	0.78
Standard Unit Result Val	96.90	%DEV	-0.05

Note : # - Not evaluated / Bimodal distribution
X : SDI more than 4

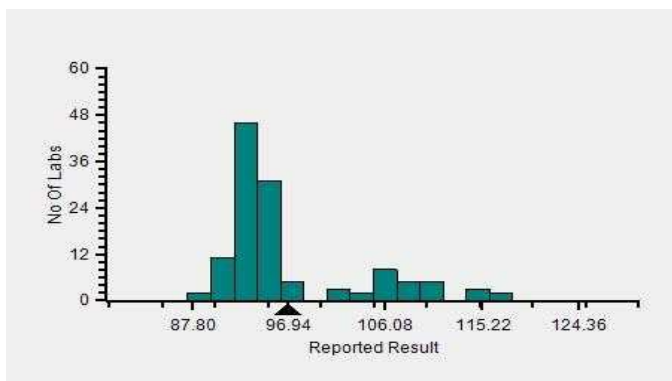
Frequency Histogram



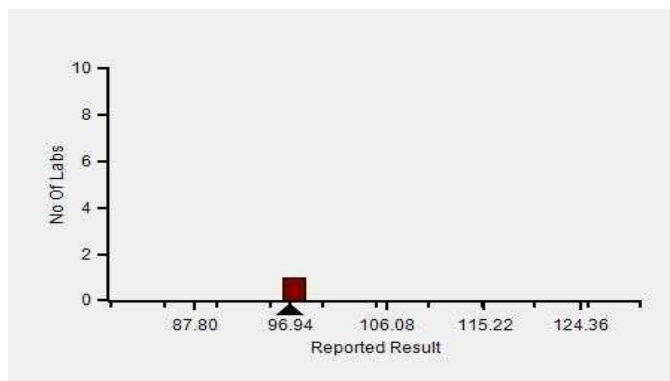
Z-Score Trend - Within Round



Frequency Histogram Your Method



Frequency Histogram Your Analyzer



Lab : 1352

Lab Name : TATA 1MG LABS JAIPUR

Report Date : 18/10/2024

Cycle No : 240207

Sample No : 01

Round Open Date : 08/08/2024

Frequency Histogram Your Method



Note : SDI with * marked are not considered for evaluation

Comments :

Biochemistry, Chloride		N	Mean	SD	CV%	Excluded
	All Analyzer	379	106.12	9.13	8.61	5
Your Analyzer :	Siemens Atellica CI 1900	1	-	-	-	-
	Fuji Dri-Chem NX500/i	31	117.74	4.92	4.18	-
	Roche cobas c 311	30	93.89	3.38	3.60	-
	Sensa Core ST200 Aqua	24	109.45	3.39	3.10	1
	Beckman Coulter DxC 700 AU	23	94.71	1.23	1.30	-
	Fuji Dri-Chem NX600	22	116.14	2.93	2.53	-
	Sensa Core ST 200 plus	18	107.46	2.05	1.91	-
	ACCULYTE-3P	18	108.69	4.07	3.75	-

Remarks: Interpretation of your reports

- a) If your SDI lies between +/- 2.0 SDI then your results are well within limits.
- b) If your SDI lies between +/-2.0 to 2.99 SDI then it is a warning alert flag.
- c) If your SDI is +/- 3.0 SDI or more then it is an action alert flag.

Interpretation when an analyte is reported for multiple samples in a Round:

- a) Reported on 2 samples:
 - Two out of two pass - Acceptable performance
 - One out of two pass - Review for random error & take action if appropriate
 - Both failed - Unacceptable performance, Review for systematic error
- b) Reported on 3 samples:
 - All pass - Acceptable performance
 - Two out of three pass - Review for random error & take action if appropriate
 - One out of three pass - Unacceptable performance, Review for systematic error
 - All failed - Unacceptable performance, Review for systematic error



Lab : 1352

Lab Name : TATA 1MG LABS JAIPUR

Report Date : 18/10/2024

Cycle No : 240207

Sample No : 01

Round Open Date : 08/08/2024

Biochemistry, Cholesterol, mg/dl

Comparative Statistics

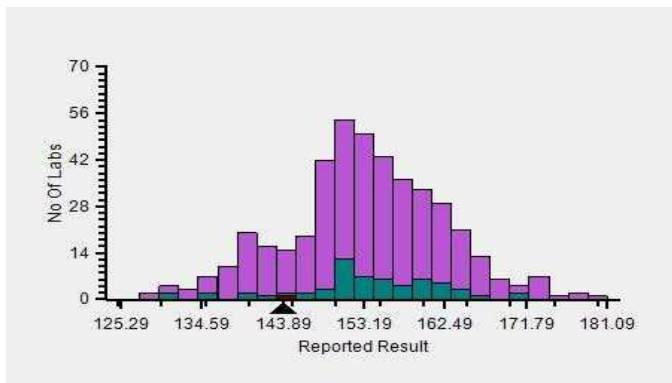
	N	Mean	SD	CV%	Excluded
All Methods	447	153.27	9.24	6.03	8
CHOD-POD - (Your Method)	62	153.37	8.68	5.66	2
Siemens Atellica CI 1900 - (Your Analyzer)	1	--	--	--	--

Evaluation Based On - Equipment wise Peer Grouping

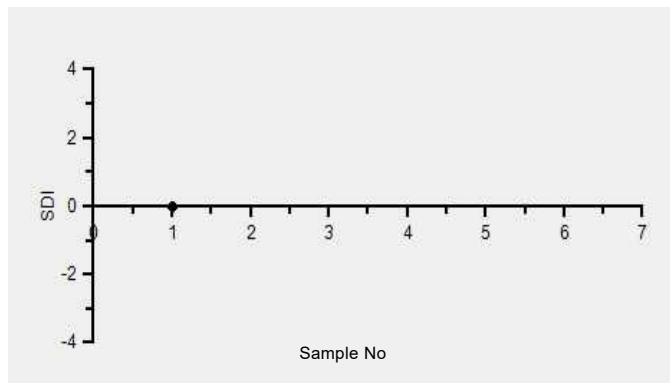
Your Result	144.00	SDI / z-Score	-0.56
Assigned Value	149.55	Average SDI	0.00
SDPA	9.820	Uncertainty of AV	1.25
Standard Unit Result Val	144.00	%DEV	-6.11

Note : # - Not evaluated / Bimodal distribution
X : SDI more than 4

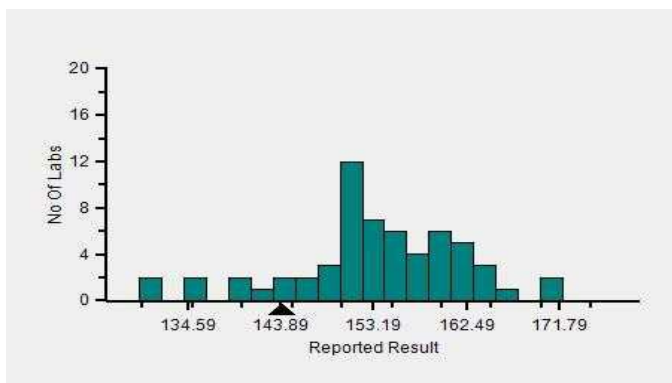
Frequency Histogram



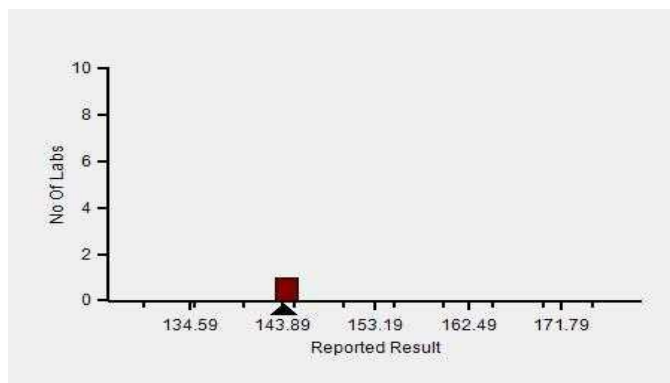
Z-Score Trend - Within Round



Frequency Histogram Your Method



Frequency Histogram Your Analyzer



Lab : 1352

Lab Name : TATA 1MG LABS JAIPUR

Report Date : 18/10/2024

Cycle No : 240207

Sample No : 01

Round Open Date : 08/08/2024

Frequency Histogram Your Method



Note : SDI with * marked are not considered for evaluation

Comments :

Biochemistry, Cholesterol		N	Mean	SD	CV%	Excluded
	All Analyzer	447	153.27	9.24	6.03	8
Your Analyzer :	Siemens Atellica CI 1900	1	-	-	-	-
	Erba EM 200	41	152.48	10.03	6.58	-
	Roche cobas c 311	41	158.02	6.12	3.87	-
	Erba XL-200	36	150.67	8.14	5.40	-
	Diasys 200 Pro	35	156.62	7.93	5.06	1
	Fuji Dri-Chem NX500/i	23	146.88	9.90	6.74	-
	Roche cobas c 111	23	152.12	8.82	5.80	-
	Beckman Coulter DxC 700 AU	23	154.32	5.27	3.42	-

Remarks: Interpretation of your reports

- a) If your SDI lies between +/- 2.0 SDI then your results are well within limits.
- b) If your SDI lies between +/-2.0 to 2.99 SDI then it is a warning alert flag.
- c) If your SDI is +/- 3.0 SDI or more then it is an action alert flag.

Interpretation when an analyte is reported for multiple samples in a Round:

a) Reported on 2 samples:

- Two out of two pass - Acceptable performance
- One out of two pass - Review for random error & take action if appropriate
- Both failed - Unacceptable performance, Review for systematic error

b) Reported on 3 samples:

- All pass - Acceptable performance
- Two out of three pass - Review for random error & take action if appropriate
- One out of three pass - Unacceptable performance, Review for systematic error
- All failed - Unacceptable performance, Review for systematic error



Lab : 1352

Lab Name : TATA 1MG LABS JAIPUR

Report Date : 18/10/2024

Cycle No : 240207

Sample No : 01

Round Open Date : 08/08/2024

Biochemistry, Creatinine, mg/dl

Comparative Statistics

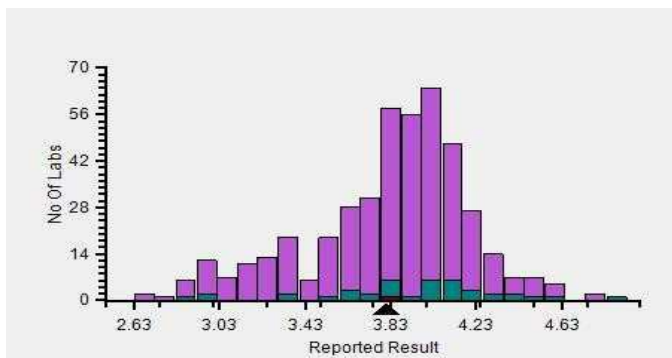
	N	Mean	SD	CV%	Excluded
All Methods	455	3.83	0.40	10.42	11
Jaffe - Alkaline picrate - (Your Method)	41	3.92	0.43	11.02	1
Siemens Atellica CI 1900 - (Your Analyzer)	1	--	--	--	--

Your Result	3.81	SDI / z-Score	-0.36
Assigned Value	3.97	Average SDI	0.00
SDPA	0.450	Uncertainty of AV	0.03
Standard Unit Result Val	3.81	%DEV	-2.81

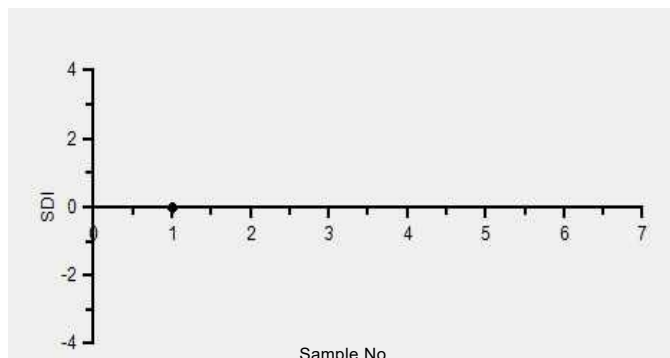
Note : # - Not evaluated / Bimodal distribution

X : SDI more than 4

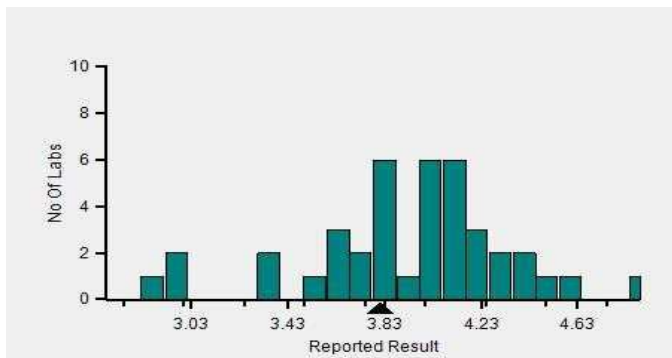
Frequency Histogram



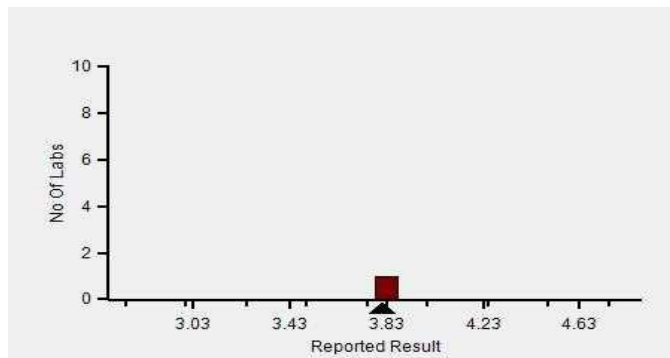
Z-Score Trend - Within Round



Frequency Histogram Your Method



Frequency Histogram Your Analyzer



Lab : 1352

Lab Name : TATA 1MG LABS JAIPUR

Report Date : 18/10/2024

Cycle No : 240207

Sample No : 01

Round Open Date : 08/08/2024

Frequency Histogram Your Method



Note : SDI with * marked are not considered for evaluation

Comments :

Biochemistry, Creatinine		N	Mean	SD	CV%	Excluded
	All Analyzer	455	3.83	0.40	10.42	11
Your Analyzer :	Siemens Atellica CI 1900	1	-	-	-	-
	Erba EM 200	41	3.99	0.22	5.56	1
	Roche cobas c 311	41	3.83	0.16	4.13	-
	Erba XL-200	36	4.01	0.23	5.66	1
	Diasys 200 Pro	36	4.14	0.31	7.52	1
	Roche cobas c 111	25	3.73	0.26	6.94	-
	Beckman Coulter DxC 700 AU	23	4.11	0.42	10.22	-
	Fuji Dri-Chem NX500/i	22	3.22	0.18	5.59	-

Remarks: Interpretation of your reports

- If your SDI lies between +/- 2.0 SDI then your results are well within limits.
- If your SDI lies between +/-2.0 to 2.99 SDI then it is a warning alert flag.
- If your SDI is +/- 3.0 SDI or more then it is an action alert flag.

Interpretation when an analyte is reported for multiple samples in a Round:

- Reported on 2 samples:
 - Two out of two pass - Acceptable performance
 - One out of two pass - Review for random error & take action if appropriate
 - Both failed - Unacceptable performance, Review for systematic error
- Reported on 3 samples:
 - All pass - Acceptable performance
 - Two out of three pass - Review for random error & take action if appropriate
 - One out of three pass - Unacceptable performance, Review for systematic error
 - All failed - Unacceptable performance, Review for systematic error



Lab : 1352

Lab Name : TATA 1MG LABS JAIPUR

Report Date : 18/10/2024

Cycle No : 240207

Sample No : 01

Round Open Date : 08/08/2024

Biochemistry, GGT, U/L

Comparative Statistics

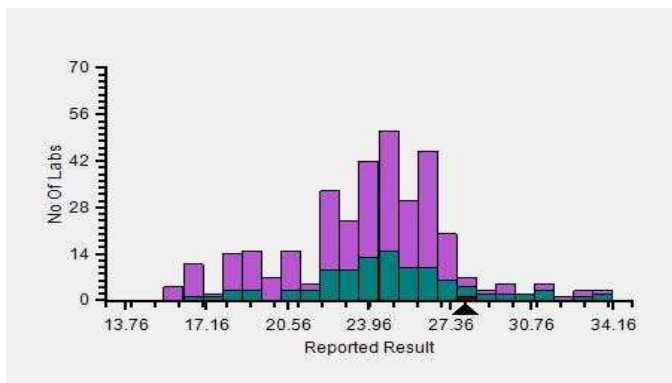
	N	Mean	SD	CV%	Excluded
All Methods	352	23.95	3.41	14.22	7
G-glutamyl-carboxy-nitroanilide - (Your Method)	104	24.79	3.35	13.51	2
Siemens Atellica CI 1900 - (Your Analyzer)	1	--	--	--	--

Your Result	28.00	SDI / z-Score	0.92
Assigned Value	25.16	Average SDI	0.00
SDPA	3.100	Uncertainty of AV	0.21
Standard Unit Result Val	28.00	%DEV	12.95

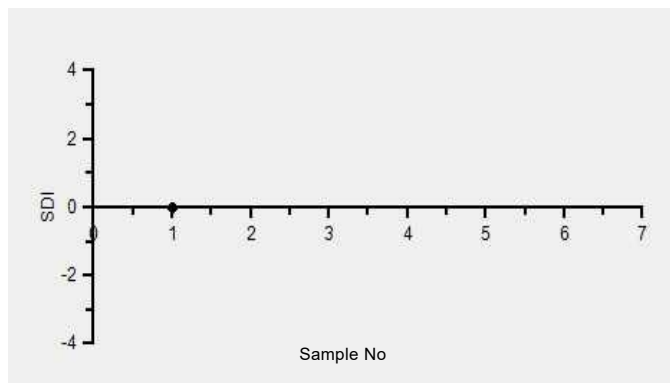
Note : # - Not evaluated / Bimodal distribution

X : SDI more than 4

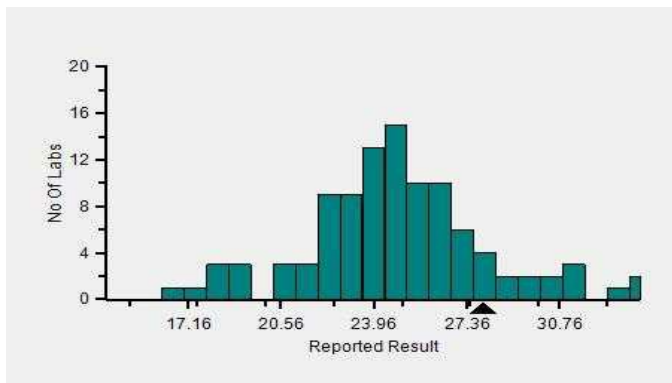
Frequency Histogram



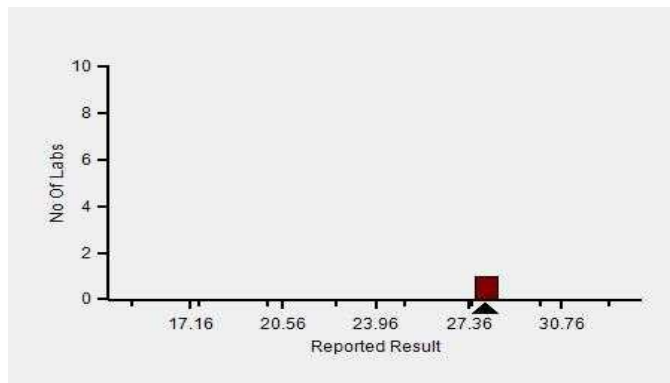
Z-Score Trend - Within Round



Frequency Histogram Your Method



Frequency Histogram Your Analyzer



Lab : 1352

Lab Name : TATA 1MG LABS JAIPUR

Report Date : 18/10/2024

Cycle No : 240207

Sample No : 01

Round Open Date : 08/08/2024

Frequency Histogram Your Method



Note : SDI with * marked are not considered for evaluation

Comments :

Biochemistry, GGT		N	Mean	SD	CV%	Excluded
	All Analyzer	352	23.95	3.41	14.22	7
Your Analyzer :	Siemens Atellica CI 1900	1	-	-	-	-
	Roche cobas c 311	39	25.15	1.85	7.35	-
	Erba XL-200	34	23.99	2.79	11.62	-
	Erba EM 200	27	26.22	3.22	12.28	-
	Roche cobas c 111	23	22.72	2.24	9.84	-
	Beckman Coulter DxC 700 AU	23	25.23	1.06	4.19	-
	Fuji Dri-Chem NX500/i	22	19.96	1.62	8.11	-
	Beckman Coulter AU480	18	24.71	1.40	5.67	-

Remarks: Interpretation of your reports

- If your SDI lies between +/- 2.0 SDI then your results are well within limits.
- If your SDI lies between +/-2.0 to 2.99 SDI then it is a warning alert flag.
- If your SDI is +/- 3.0 SDI or more then it is an action alert flag.

Interpretation when an analyte is reported for multiple samples in a Round:

a) Reported on 2 samples:

- Two out of two pass - Acceptable performance
- One out of two pass - Review for random error & take action if appropriate
- Both failed - Unacceptable performance, Review for systematic error

b) Reported on 3 samples:

- All pass - Acceptable performance
- Two out of three pass - Review for random error & take action if appropriate
- One out of three pass - Unacceptable performance, Review for systematic error
- All failed - Unacceptable performance, Review for systematic error



Lab : 1352

Lab Name : TATA 1MG LABS JAIPUR

Report Date : 18/10/2024

Cycle No : 240207

Sample No : 01

Round Open Date : 08/08/2024

Biochemistry, Glucose, mg/dl

Comparative Statistics

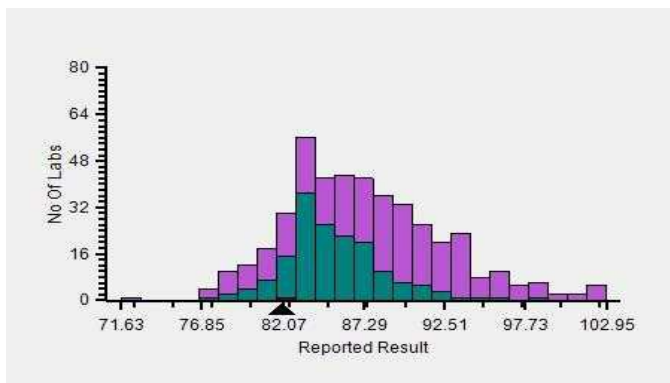
	N	Mean	SD	CV%	Excluded
All Methods	447	87.33	5.21	5.96	13
Hexokinase - (Your Method)	161	85.42	3.27	3.83	--
Siemens Atellica CI 1900 - (Your Analyzer)	1	--	--	--	--

Your Result	82.00	SDI / z-Score	-1.02
Assigned Value	88.48	Average SDI	0.00
SDPA	6.350	Uncertainty of AV	0.61
Standard Unit Result Val	82.00	%DEV	-4.01

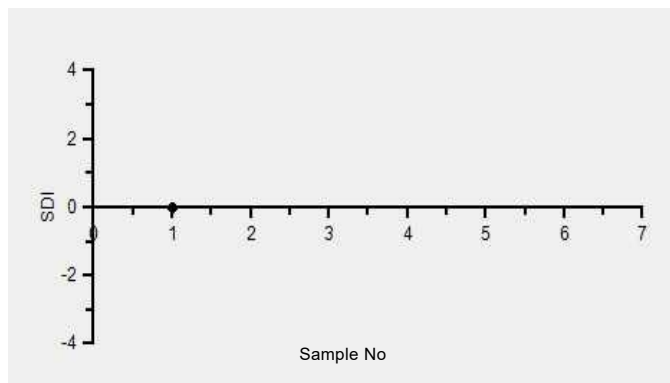
Note : # - Not evaluated / Bimodal distribution

X : SDI more than 4

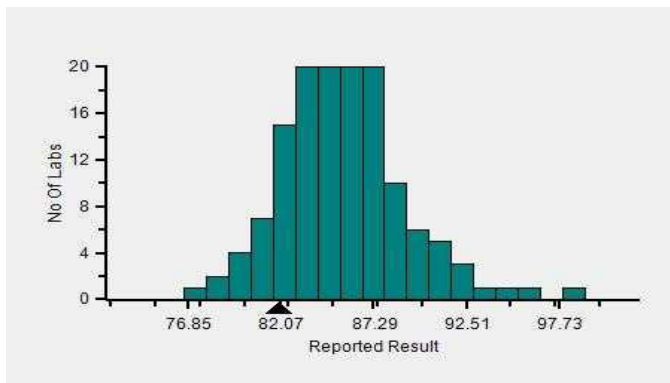
Frequency Histogram



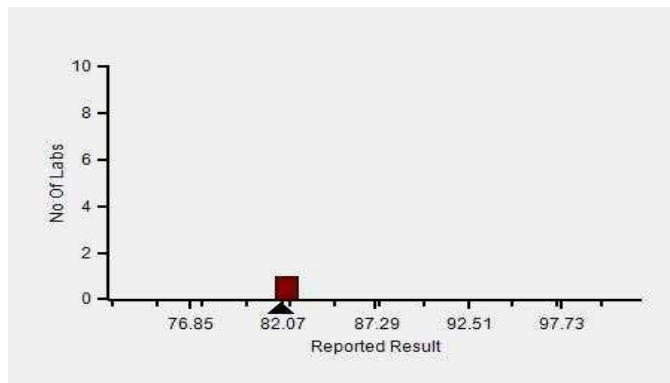
Z-Score Trend - Within Round



Frequency Histogram Your Method



Frequency Histogram Your Analyzer



Lab : 1352

Lab Name : TATA 1MG LABS JAIPUR

Report Date : 18/10/2024

Cycle No : 240207

Sample No : 01

Round Open Date : 08/08/2024

Frequency Histogram Your Method



Note : SDI with * marked are not considered for evaluation

Comments :

Biochemistry, Glucose		N	Mean	SD	CV%	Excluded
	All Analyzer	447	87.33	5.21	5.96	13
Your Analyzer :	Siemens Atellica CI 1900	1	-	-	-	-
	Roche cobas c 311	41	85.63	2.69	3.15	-
	Erba EM 200	39	92.51	5.00	5.40	2
	Diasys 200 Pro	36	90.79	5.17	5.69	2
	Erba XL-200	32	91.41	3.74	4.09	-
	Fuji Dri-Chem NX500/i	24	83.45	3.51	4.21	1
	Roche cobas c 111	23	86.59	2.94	3.40	-
	Beckman Coulter DxC 700 AU	23	85.18	3.14	3.68	-

Remarks: Interpretation of your reports

- If your SDI lies between +/- 2.0 SDI then your results are well within limits.
- If your SDI lies between +/-2.0 to 2.99 SDI then it is a warning alert flag.
- If your SDI is +/- 3.0 SDI or more then it is an action alert flag.

Interpretation when an analyte is reported for multiple samples in a Round:

a) Reported on 2 samples:

- Two out of two pass - Acceptable performance
- One out of two pass - Review for random error & take action if appropriate
- Both failed - Unacceptable performance, Review for systematic error

b) Reported on 3 samples:

- All pass - Acceptable performance
- Two out of three pass - Review for random error & take action if appropriate
- One out of three pass - Unacceptable performance, Review for systematic error
- All failed - Unacceptable performance, Review for systematic error



Lab : 1352

Lab Name : TATA 1MG LABS JAIPUR

Report Date : 18/10/2024

Cycle No : 240207

Sample No : 01

Round Open Date : 08/08/2024

Biochemistry, HDL, mg/dl

Comparative Statistics

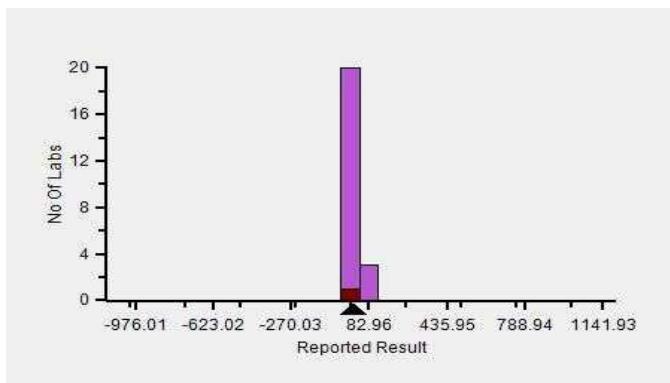
	N	Mean	SD	CV%	Excluded
All Methods	432	89.52	75.69	84.55	407
Selective Inhibition Method - (Your Method)	17	14.10	--	--	16
Siemens Atellica CI 1900 - (Your Analyzer)	1	--	--	--	--

Your Result	14.10	SDI / z-Score	
Assigned Value	#	Average SDI	0.00
SDPA	#	Uncertainty of AV	
Standard Unit Result Val	14.10 #	%DEV	

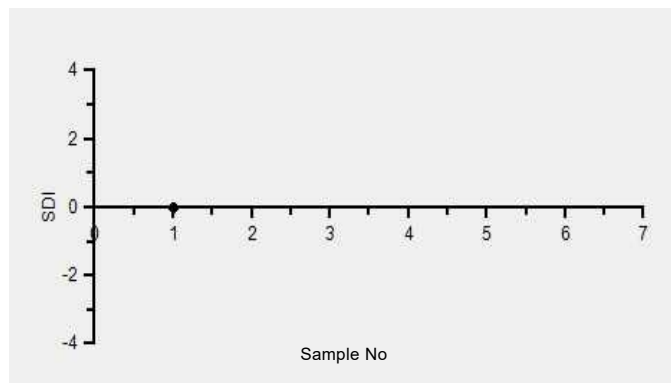
Note : # - Not evaluated / Bimodal distribution

X : SDI more than 4

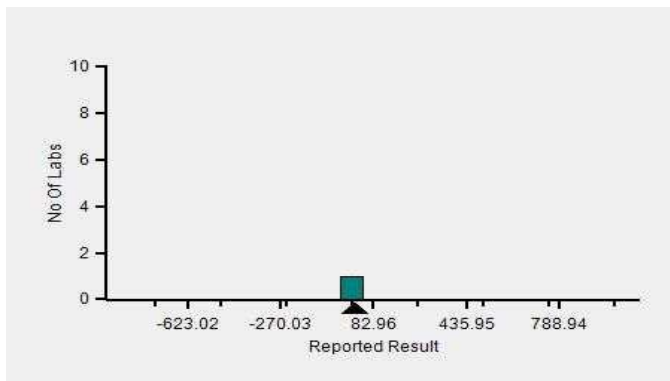
Frequency Histogram



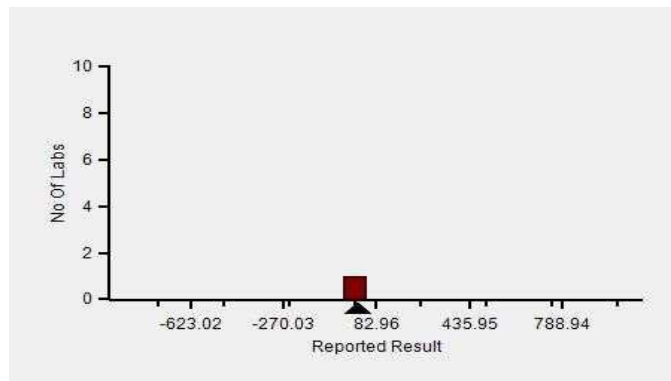
Z-Score Trend - Within Round



Frequency Histogram Your Method



Frequency Histogram Your Analyzer



Lab : 1352

Lab Name : TATA 1MG LABS JAIPUR

Report Date : 18/10/2024

Cycle No : 240207

Sample No : 01

Round Open Date : 08/08/2024

Frequency Histogram Your Method



Note : SDI with * marked are not considered for evaluation

Comments :

Biochemistry, HDL		N	Mean	SD	CV%	Excluded
	All Analyzer	432	16.42	12.74	77.61	407
Your Analyzer :	Siemens Atellica CI 1900	1	-	-	-	-
	Roche cobas c 311	41	-	-	-	41
	Erba EM 200	38	-	-	-	38
	Erba XL-200	35	14.90	10.19	68.38	32
	Diasys 200 Pro	35	7.62	3.53	46.41	29
	Roche cobas c 111	24	-	-	-	24
	Beckman Coulter DxC 700 AU	23	15.72	5.88	37.41	20
	Fuji Dri-Chem NX500/i	21	-	-	-	21

Remarks: Interpretation of your reports

- a) If your SDI lies between +/- 2.0 SDI then your results are well within limits.
- b) If your SDI lies between +/-2.0 to 2.99 SDI then it is a warning alert flag.
- c) If your SDI is +/- 3.0 SDI or more then it is an action alert flag.

Interpretation when an analyte is reported for multiple samples in a Round:

a) Reported on 2 samples:

- Two out of two pass - Acceptable performance
- One out of two pass - Review for random error & take action if appropriate
- Both failed - Unacceptable performance, Review for systematic error

b) Reported on 3 samples:

- All pass - Acceptable performance
- Two out of three pass - Review for random error & take action if appropriate
- One out of three pass - Unacceptable performance, Review for systematic error
- All failed - Unacceptable performance, Review for systematic error



Lab : 1352

Lab Name : TATA 1MG LABS JAIPUR

Report Date : 18/10/2024

Cycle No : 240207

Sample No : 01

Round Open Date : 08/08/2024

Biochemistry, LDL, mg/dl

Comparative Statistics

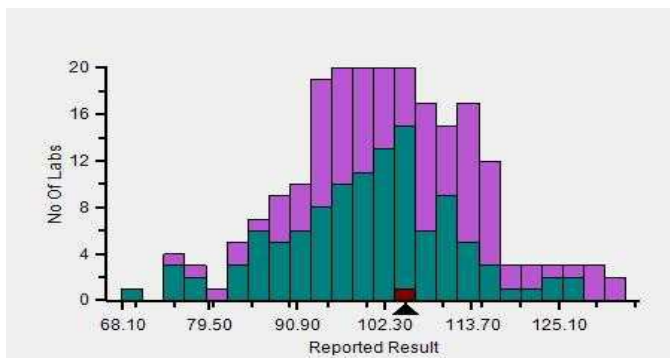
	N	Mean	SD	CV%	Excluded
All Methods	238	102.24	11.41	11.16	10
Direct measure - (Your Method)	115	100.03	11.25	11.24	5
Siemens ADVIA Chemistry XPT - (Your Analyzer)	1	--	--	--	--

Your Result	105.00	SDI / z-Score	0.60
Assigned Value	99.81	Average SDI	0.00
SDPA	8.600	Uncertainty of AV	0.83
Standard Unit Result Val	105.00	%DEV	4.96

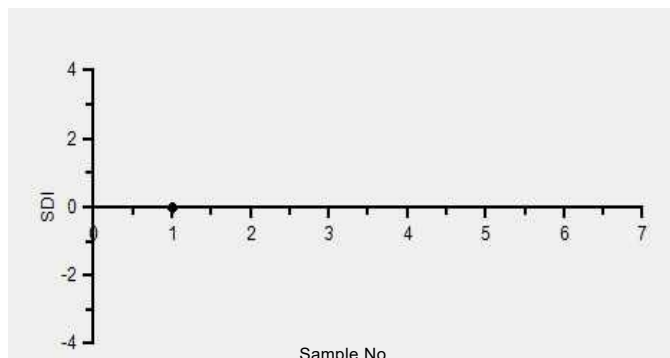
Note : # - Not evaluated / Bimodal distribution

X : SDI more than 4

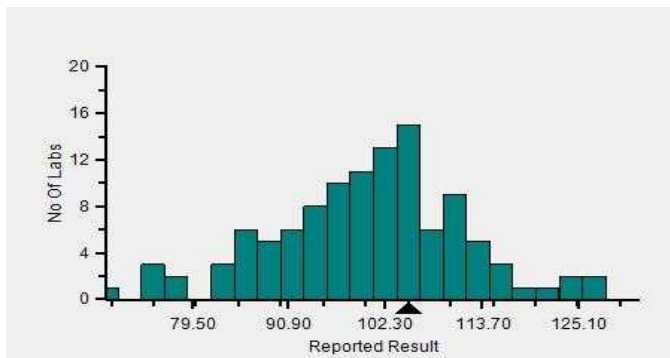
Frequency Histogram



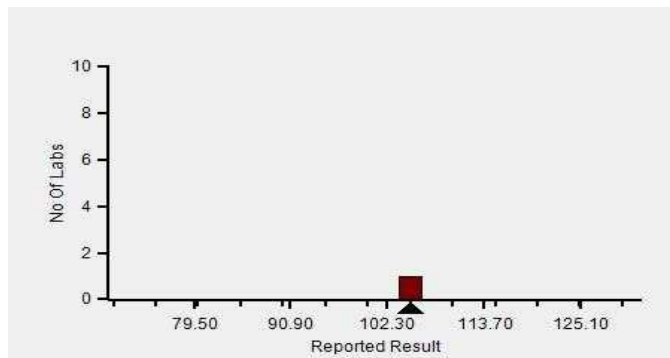
Z-Score Trend - Within Round



Frequency Histogram Your Method



Frequency Histogram Your Analyzer



Lab : 1352

Lab Name : TATA 1MG LABS JAIPUR

Report Date : 18/10/2024

Cycle No : 240207

Sample No : 01

Round Open Date : 08/08/2024

Frequency Histogram Your Method



Note : SDI with * marked are not considered for evaluation

Comments :

Biochemistry, LDL		N	Mean	SD	CV%	Excluded
	All Analyzer	238	102.24	11.41	11.16	10
Your Analyzer :	Siemens ADVIA Chemistry XPT	1	-	-	-	-
	Roche cobas c 311	30	100.01	7.38	7.38	2
	Diasys 200 Pro	26	96.27	16.30	16.93	2
	Beckman Coulter DxC 700 AU	22	109.39	6.31	5.77	-
	Erba EM 200	14	100.63	11.04	10.97	1
	Beckman Coulter AU480	12	113.02	10.89	9.64	-
	Erba XL-200	12	97.10	13.42	13.82	1
	Beckman Coulter AU480	11	112.70	11.36	10.08	-

Remarks: Interpretation of your reports

- a) If your SDI lies between +/- 2.0 SDI then your results are well within limits.
- b) If your SDI lies between +/-2.0 to 2.99 SDI then it is a warning alert flag.
- c) If your SDI is +/- 3.0 SDI or more then it is an action alert flag.

Interpretation when an analyte is reported for multiple samples in a Round:

a) Reported on 2 samples:

- Two out of two pass - Acceptable performance
- One out of two pass - Review for random error & take action if appropriate
- Both failed - Unacceptable performance, Review for systematic error

b) Reported on 3 samples:

- All pass - Acceptable performance
- Two out of three pass - Review for random error & take action if appropriate
- One out of three pass - Unacceptable performance, Review for systematic error
- All failed - Unacceptable performance, Review for systematic error



Lab : 1352

Lab Name : TATA 1MG LABS JAIPUR

Report Date : 18/10/2024

Cycle No : 240207

Sample No : 01

Round Open Date : 08/08/2024

Biochemistry, Potassium, mEq/L

Comparative Statistics

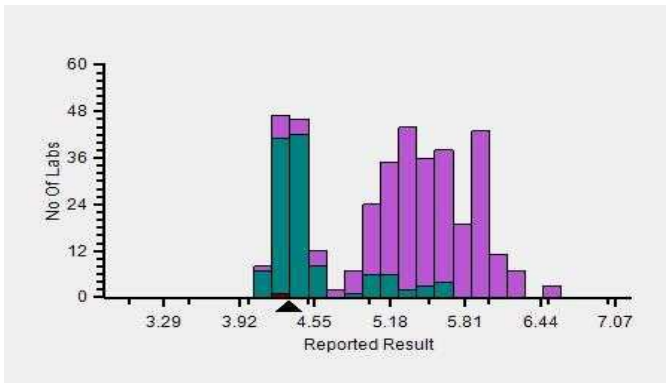
	N	Mean	SD	CV%	Excluded
All Methods	391	5.18	0.63	12.17	9
ISE indirect - (Your Method)	127	4.52	0.39	8.57	8
Siemens Atellica CI 1900 - (Your Analyzer)	1	--	--	--	--

Evaluation Based On - Method wise Peer Grouping

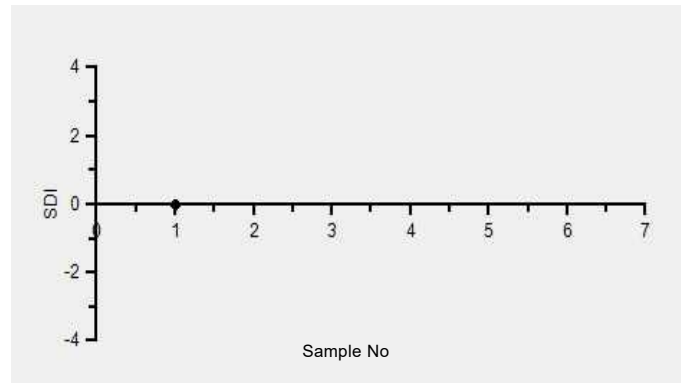
Your Result	4.33	SDI / z-Score	-0.03
Assigned Value	4.34	Average SDI	0.00
SDPA	0.450	Uncertainty of AV	0.02
Standard Unit Result Val	4.33	%DEV	-4.12

Note : # - Not evaluated / Bimodal distribution
X : SDI more than 4

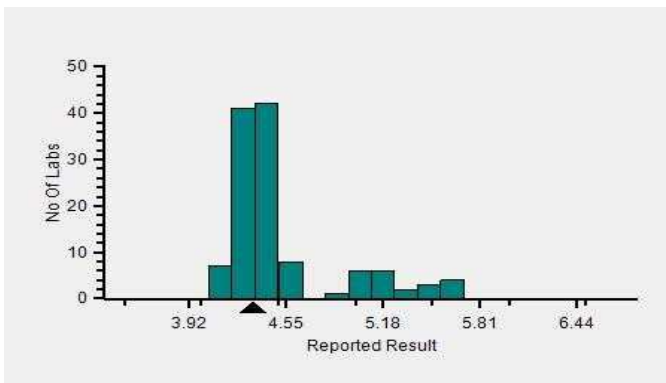
Frequency Histogram



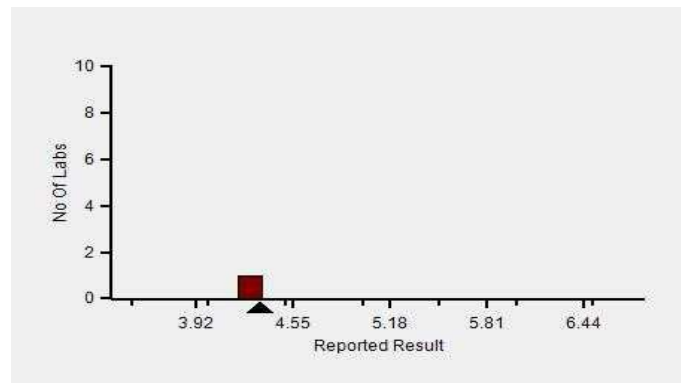
Z-Score Trend - Within Round



Frequency Histogram Your Method



Frequency Histogram Your Analyzer



Lab : 1352

Lab Name : TATA 1MG LABS JAIPUR

Report Date : 18/10/2024

Cycle No : 240207

Sample No : 01

Round Open Date : 08/08/2024

Frequency Histogram Your Method



Note : SDI with * marked are not considered for evaluation

Comments :

Biochemistry, Potassium		N	Mean	SD	CV%	Excluded
	All Analyzer	391	5.18	0.63	12.17	9
Your Analyzer :	Siemens Atellica CI 1900	1	-	-	-	-
	Fuji Dri-Chem NX500/i	35	5.94	0.30	5.04	-
	Roche cobas c 311	29	4.46	0.25	5.56	-
	Sensa Core ST200 Aqua	25	5.16	0.25	4.88	-
	Beckman Coulter DxC 700 AU	23	4.25	0.04	0.89	-
	Fuji Dri-Chem NX600	22	5.89	0.14	2.36	-
	Sensa Core ST 200 plus	19	5.25	0.16	3.03	2
	EasyLyte	17	5.34	0.33	6.11	-

Remarks: Interpretation of your reports

- a) If your SDI lies between +/- 2.0 SDI then your results are well within limits.
- b) If your SDI lies between +/-2.0 to 2.99 SDI then it is a warning alert flag.
- c) If your SDI is +/- 3.0 SDI or more then it is an action alert flag.

Interpretation when an analyte is reported for multiple samples in a Round:

- a) Reported on 2 samples:
 - Two out of two pass - Acceptable performance
 - One out of two pass - Review for random error & take action if appropriate
 - Both failed - Unacceptable performance, Review for systematic error
- b) Reported on 3 samples:
 - All pass - Acceptable performance
 - Two out of three pass - Review for random error & take action if appropriate
 - One out of three pass - Unacceptable performance, Review for systematic error
 - All failed - Unacceptable performance, Review for systematic error



Lab : 1352

Lab Name : TATA 1MG LABS JAIPUR

Report Date : 18/10/2024

Cycle No : 240207

Sample No : 01

Round Open Date : 08/08/2024

Biochemistry, Sodium, mEq/L

Comparative Statistics

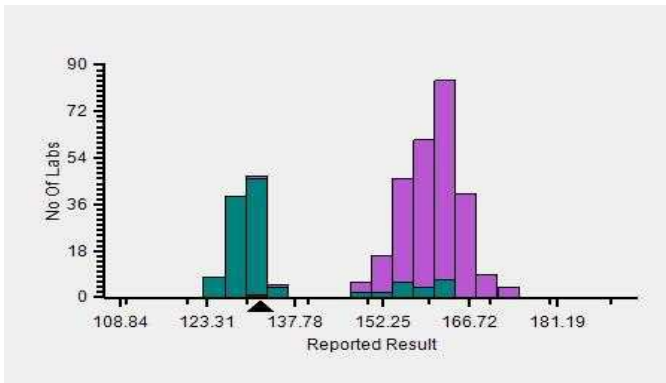
	N	Mean	SD	CV%	Excluded
All Methods	391	152.31	14.43	9.48	27
ISE indirect - (Your Method)	124	134.68	11.41	8.47	7
Siemens Atellica CI 1900 - (Your Analyzer)	1	--	--	--	--

Evaluation Based On - Method wise Peer Grouping

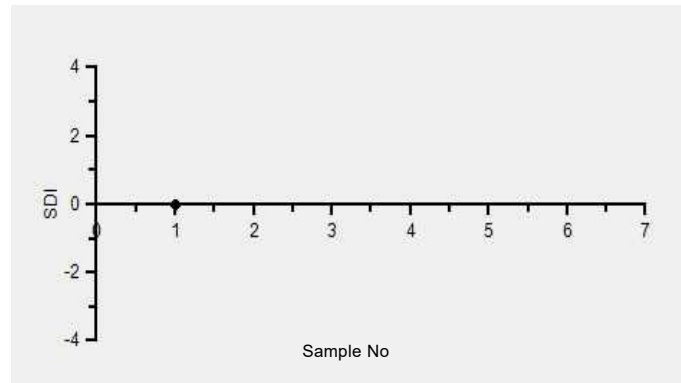
Your Result	132.00	SDI / z-Score	0.21
Assigned Value	129.59	Average SDI	0.00
SDPA	11.500	Uncertainty of AV	0.33
Standard Unit Result Val	132.00	%DEV	-1.99

Note : # - Not evaluated / Bimodal distribution
X : SDI more than 4

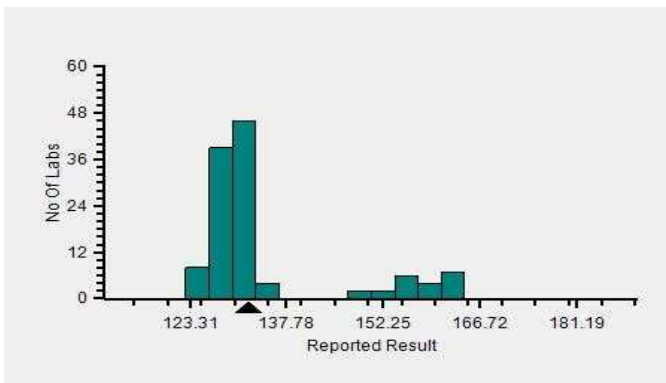
Frequency Histogram



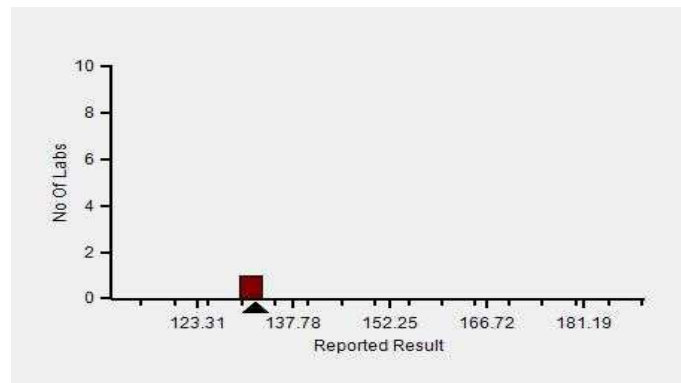
Z-Score Trend - Within Round



Frequency Histogram Your Method



Frequency Histogram Your Analyzer



Lab : 1352

Lab Name : TATA 1MG LABS JAIPUR

Report Date : 18/10/2024

Cycle No : 240207

Sample No : 01

Round Open Date : 08/08/2024

Frequency Histogram Your Method



Note : SDI with * marked are not considered for evaluation

Comments :

Biochemistry, Sodium		N	Mean	SD	CV%	Excluded
	All Analyzer	391	152.31	14.43	9.48	27
Your Analyzer :	Siemens Atellica CI 1900	1	-	-	-	-
	Fuji Dri-Chem NX500/i	36	162.64	2.62	1.61	1
	Roche cobas c 311	30	132.53	6.71	5.06	2
	Sensa Core ST200 Aqua	26	159.88	4.41	2.76	1
	Beckman Coulter DxC 700 AU	23	127.73	1.28	1.00	2
	Fuji Dri-Chem NX600	22	164.09	3.38	2.06	-
	Sensa Core ST 200 plus	19	157.29	3.94	2.51	1
	ACCULYTE-3P	18	163.87	4.08	2.49	1

Remarks: Interpretation of your reports

- a) If your SDI lies between +/- 2.0 SDI then your results are well within limits.
- b) If your SDI lies between +/-2.0 to 2.99 SDI then it is a warning alert flag.
- c) If your SDI is +/- 3.0 SDI or more then it is an action alert flag.

Interpretation when an analyte is reported for multiple samples in a Round:

a) Reported on 2 samples:

- Two out of two pass - Acceptable performance
- One out of two pass - Review for random error & take action if appropriate
- Both failed - Unacceptable performance, Review for systematic error

b) Reported on 3 samples:

- All pass - Acceptable performance
- Two out of three pass - Review for random error & take action if appropriate
- One out of three pass - Unacceptable performance, Review for systematic error
- All failed - Unacceptable performance, Review for systematic error



Lab : 1352

Lab Name : TATA 1MG LABS JAIPUR

Report Date : 18/10/2024

Cycle No : 240207

Sample No : 01

Round Open Date : 08/08/2024

Biochemistry, Total Protein, g/dL

Comparative Statistics

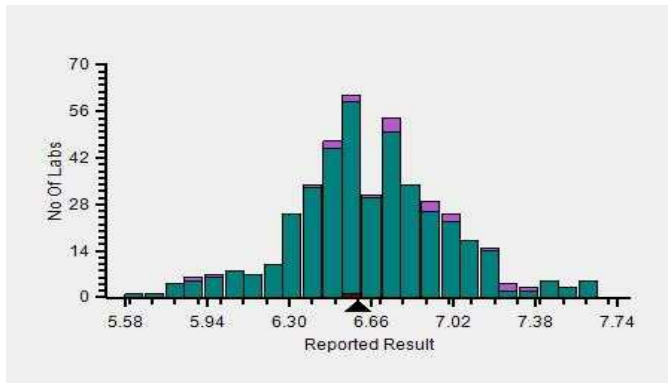
	N	Mean	SD	CV%	Excluded
All Methods	450	6.66	0.36	5.33	13
Biuret - (Your Method)	427	6.65	0.35	5.31	11
Siemens Atellica CI 1900 - (Your Analyzer)	1	--	--	--	--

Evaluation Based On - Equipment wise Peer Grouping

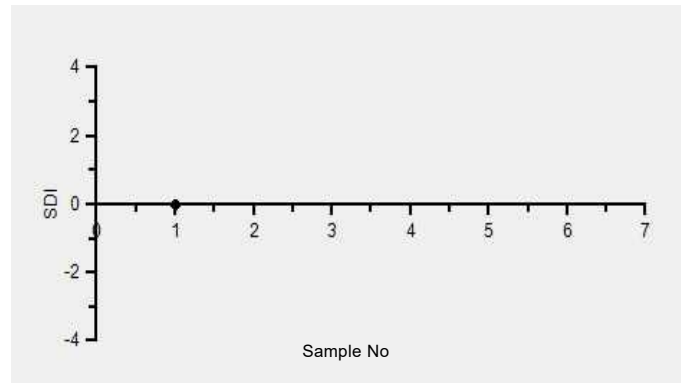
Your Result	6.60	SDI / z-Score	-0.01
Assigned Value	6.61	Average SDI	0.00
SDPA	0.340	Uncertainty of AV	0.02
Standard Unit Result Val	6.60	%DEV	-0.80

Note : # - Not evaluated / Bimodal distribution
X : SDI more than 4

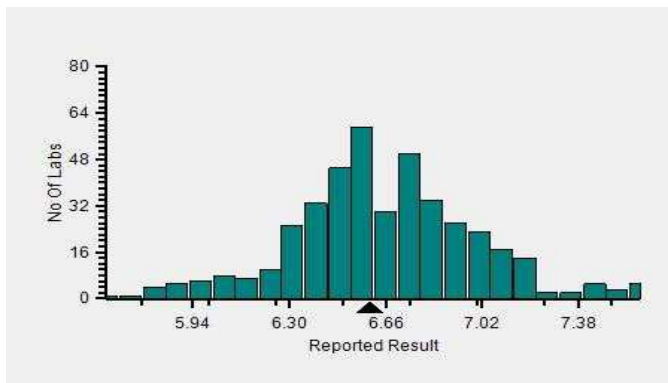
Frequency Histogram



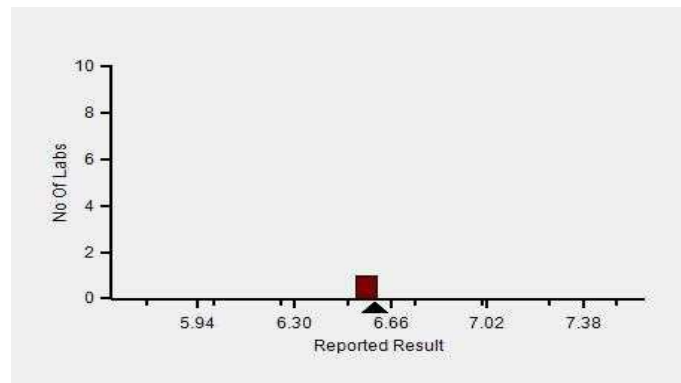
Z-Score Trend - Within Round



Frequency Histogram Your Method



Frequency Histogram Your Analyzer



Lab : 1352

Lab Name : TATA 1MG LABS JAIPUR

Report Date : 18/10/2024

Cycle No : 240207

Sample No : 01

Round Open Date : 08/08/2024

Frequency Histogram Your Method



Note : SDI with * marked are not considered for evaluation

Comments :

Biochemistry, Total Protein		N	Mean	SD	CV%	Excluded
	All Analyzer	450	6.66	0.36	5.33	13
Your Analyzer :	Siemens Atellica CI 1900	1	-	-	-	-
	Erba EM 200	42	6.46	0.39	6.09	3
	Roche cobas c 311	41	6.66	0.19	2.88	-
	Diasys 200 Pro	36	6.87	0.39	5.68	2
	Erba XL-200	35	6.52	0.32	4.91	-
	Roche cobas c 111	26	6.52	0.38	5.89	2
	Fuji Dri-Chem NX500/i	25	7.06	0.30	4.25	-
	Beckman Coulter DxC 700 AU	23	6.61	0.17	2.54	1

Remarks: Interpretation of your reports

- a) If your SDI lies between +/- 2.0 SDI then your results are well within limits.
- b) If your SDI lies between +/-2.0 to 2.99 SDI then it is a warning alert flag.
- c) If your SDI is +/- 3.0 SDI or more then it is an action alert flag.

Interpretation when an analyte is reported for multiple samples in a Round:

a) Reported on 2 samples:

- Two out of two pass - Acceptable performance
- One out of two pass - Review for random error & take action if appropriate
- Both failed - Unacceptable performance, Review for systematic error

b) Reported on 3 samples:

- All pass - Acceptable performance
- Two out of three pass - Review for random error & take action if appropriate
- One out of three pass - Unacceptable performance, Review for systematic error
- All failed - Unacceptable performance, Review for systematic error



Lab : 1352

Lab Name : TATA 1MG LABS JAIPUR

Report Date : 18/10/2024

Cycle No : 240207

Sample No : 01

Round Open Date : 08/08/2024

Biochemistry, Triglycerides, mg/dl

Comparative Statistics

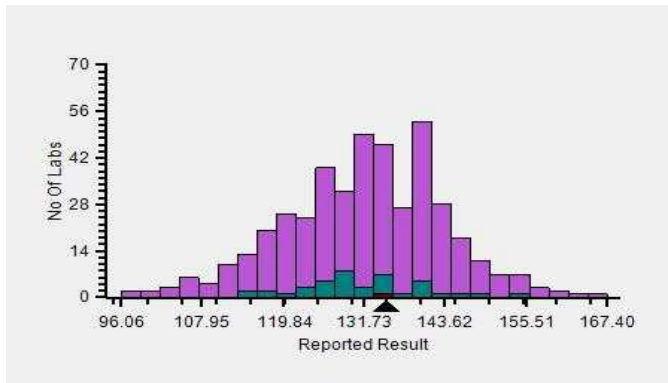
	N	Mean	SD	CV%	Excluded
All Methods	445	131.72	11.91	9.04	11
Colorimetric enzymatic - GPO - (Your Method)	42	131.29	8.99	6.84	1
Siemens Atellica CI 1900 - (Your Analyzer)	1	--	--	--	--

Evaluation Based On - Equipment wise Peer Grouping

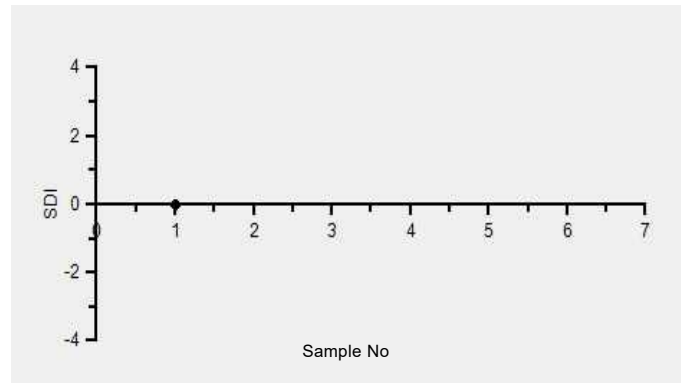
Your Result	135.00	SDI / z-Score	-0.24
Assigned Value	137.51	Average SDI	0.00
SDPA	10.600	Uncertainty of AV	0.82
Standard Unit Result Val	135.00	%DEV	2.82

Note : # - Not evaluated / Bimodal distribution
X : SDI more than 4

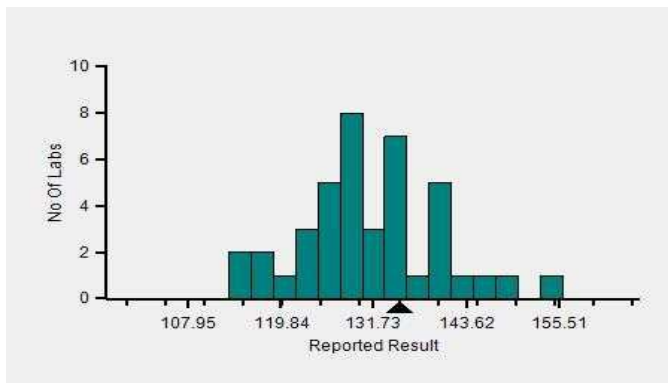
Frequency Histogram



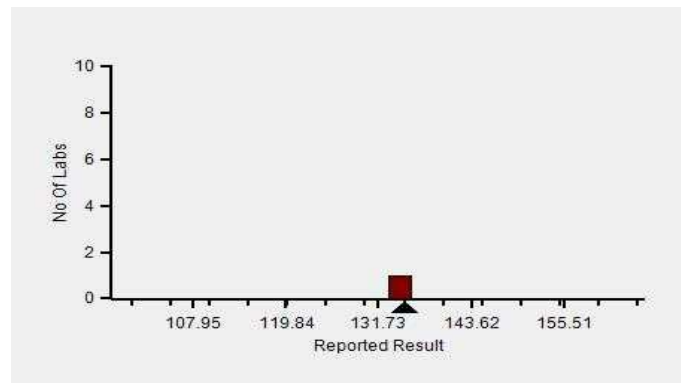
Z-Score Trend - Within Round



Frequency Histogram Your Method



Frequency Histogram Your Analyzer



Lab : 1352

Lab Name : TATA 1MG LABS JAIPUR

Report Date : 18/10/2024

Cycle No : 240207

Sample No : 01

Round Open Date : 08/08/2024

Frequency Histogram Your Method



Note : SDI with * marked are not considered for evaluation

Comments :

Biochemistry, Triglycerides		N	Mean	SD	CV%	Excluded
	All Analyzer	445	131.72	11.91	9.04	11
Your Analyzer :	Siemens Atellica CI 1900	1	-	-	-	-
	Roche cobas c 311	41	140.90	6.78	4.81	-
	Erba EM 200	40	125.15	10.87	8.68	1
	Erba XL-200	36	122.93	6.80	5.53	-
	Diasys 200 Pro	35	132.42	9.35	7.06	2
	Roche cobas c 111	25	144.36	11.29	7.82	-
	Beckman Coulter DxC 700 AU	24	117.11	11.39	9.73	-
	Fuji Dri-Chem NX500/i	23	138.17	9.02	6.53	-

Remarks: Interpretation of your reports

- a) If your SDI lies between +/- 2.0 SDI then your results are well within limits.
- b) If your SDI lies between +/-2.0 to 2.99 SDI then it is a warning alert flag.
- c) If your SDI is +/- 3.0 SDI or more then it is an action alert flag.

Interpretation when an analyte is reported for multiple samples in a Round:

a) Reported on 2 samples:

- Two out of two pass - Acceptable performance
- One out of two pass - Review for random error & take action if appropriate
- Both failed - Unacceptable performance, Review for systematic error

b) Reported on 3 samples:

- All pass - Acceptable performance
- Two out of three pass - Review for random error & take action if appropriate
- One out of three pass - Unacceptable performance, Review for systematic error
- All failed - Unacceptable performance, Review for systematic error



Lab : 1352

Lab Name : TATA 1MG LABS JAIPUR

Report Date : 18/10/2024

Cycle No : 240207

Sample No : 01

Round Open Date : 08/08/2024

Biochemistry, Urea, mg/dl

Comparative Statistics

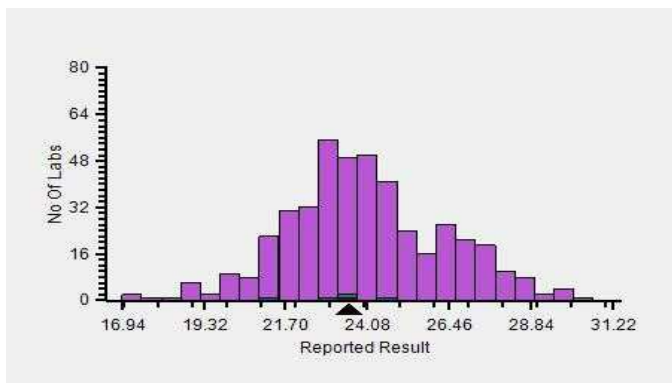
	N	Mean	SD	CV%	Excluded
All Methods	451	24.07	2.38	9.89	11
Calculated - (Your Method)	5	23.17	1.39	6.01	--
Siemens Atellica CI 1900 - (Your Analyzer)	1	--	--	--	--

Your Result	23.54	SDI / z-Score	-0.02
Assigned Value	23.58	Average SDI	0.00
SDPA	2.135	Uncertainty of AV	0.39
Standard Unit Result Val	23.54	%DEV	1.61

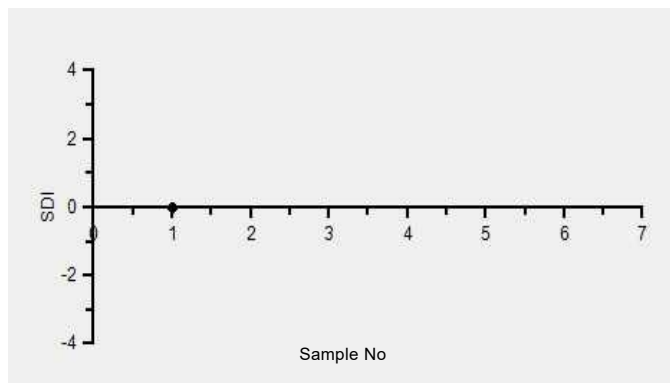
Note : # - Not evaluated / Bimodal distribution

X : SDI more than 4

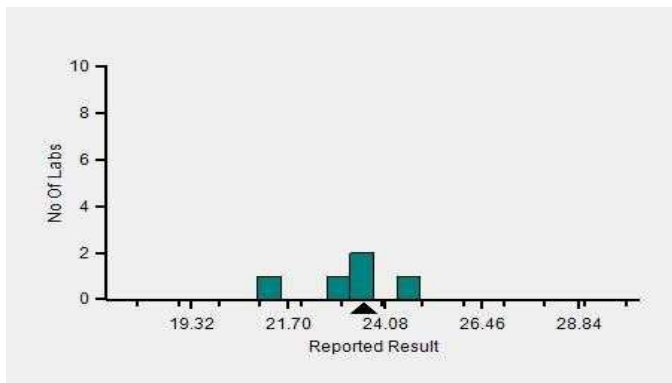
Frequency Histogram



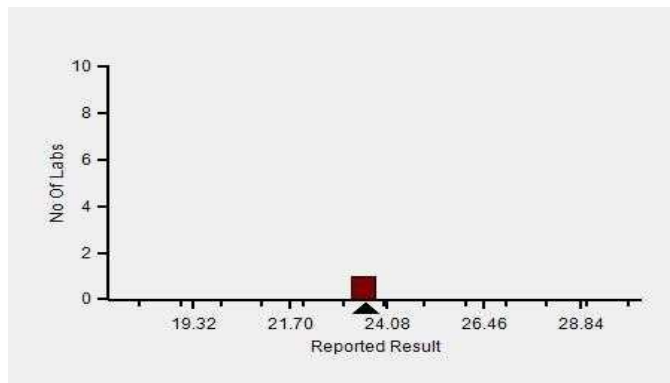
Z-Score Trend - Within Round



Frequency Histogram Your Method



Frequency Histogram Your Analyzer



Lab : 1352

Lab Name : TATA 1MG LABS JAIPUR

Report Date : 18/10/2024

Cycle No : 240207

Sample No : 01

Round Open Date : 08/08/2024

Frequency Histogram Your Method



Note : SDI with * marked are not considered for evaluation

Comments :

Biochemistry, Urea		N	Mean	SD	CV%	Excluded
	All Analyzer	451	24.07	2.38	9.89	11
Your Analyzer :	Siemens Atellica CI 1900	1	-	-	-	-
	Erba EM 200	42	23.70	2.00	8.42	2
	Roche cobas c 311	41	23.93	1.04	4.34	-
	Erba XL-200	36	23.64	2.03	8.58	-
	Diasys 200 Pro	36	26.30	2.72	10.36	-
	Roche cobas c 111	26	22.42	1.80	8.04	-
	Beckman Coulter DxC 700 AU	23	23.43	1.27	5.43	-
	Fuji Dri-Chem NX500/i	22	26.95	1.27	4.71	1

Remarks: Interpretation of your reports

- a) If your SDI lies between +/- 2.0 SDI then your results are well within limits.
- b) If your SDI lies between +/-2.0 to 2.99 SDI then it is a warning alert flag.
- c) If your SDI is +/- 3.0 SDI or more then it is an action alert flag.

Interpretation when an analyte is reported for multiple samples in a Round:

- a) Reported on 2 samples:
 - Two out of two pass - Acceptable performance
 - One out of two pass - Review for random error & take action if appropriate
 - Both failed - Unacceptable performance, Review for systematic error
- b) Reported on 3 samples:
 - All pass - Acceptable performance
 - Two out of three pass - Review for random error & take action if appropriate
 - One out of three pass - Unacceptable performance, Review for systematic error
 - All failed - Unacceptable performance, Review for systematic error

Lab : 1352

Lab Name : TATA 1MG LABS JAIPUR

Report Date : 18/10/2024

Cycle No : 240207

Sample No : 01

Round Open Date : 08/08/2024

Biochemistry, Uric Acid, mg/dl

Comparative Statistics

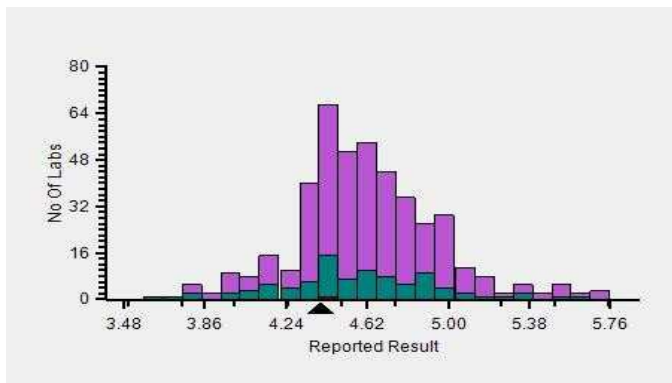
	N	Mean	SD	CV%	Excluded
All Methods	445	4.62	0.38	8.12	6
Uricase - (Your Method)	96	4.63	0.49	10.51	--
Siemens Atellica CI 1900 - (Your Analyzer)	1	--	--	--	--

Evaluation Based On - Equipment wise Peer Grouping

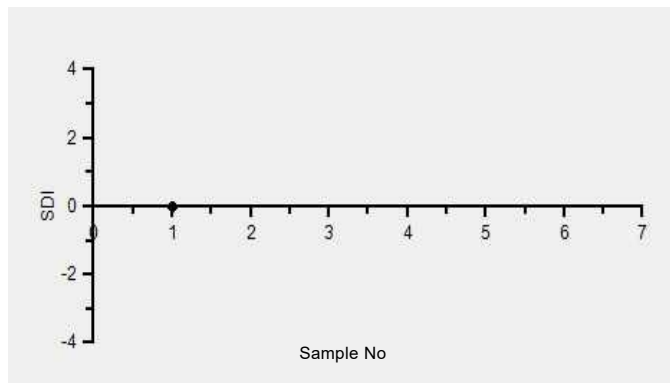
Your Result	4.40	SDI / z-Score	-0.14
Assigned Value	4.46	Average SDI	0.00
SDPA	0.400	Uncertainty of AV	0.01
Standard Unit Result Val	4.40	%DEV	-4.86

Note : # - Not evaluated / Bimodal distribution
X : SDI more than 4

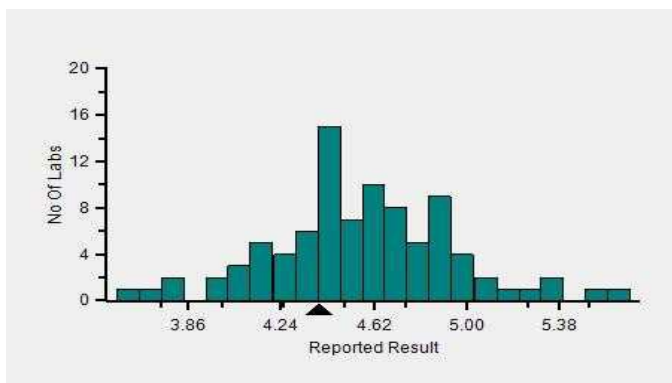
Frequency Histogram



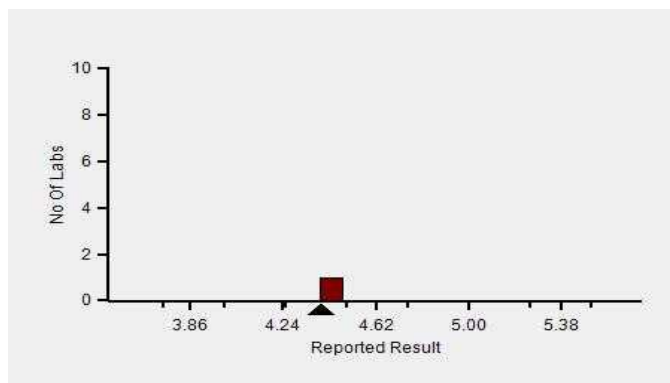
Z-Score Trend - Within Round



Frequency Histogram Your Method



Frequency Histogram Your Analyzer



Lab : 1352

Lab Name : TATA 1MG LABS JAIPUR

Report Date : 18/10/2024

Cycle No : 240207

Sample No : 01

Round Open Date : 08/08/2024

Frequency Histogram Your Method



Note : SDI with * marked are not considered for evaluation

Comments :

Biochemistry, Uric Acid		N	Mean	SD	CV%	Excluded
	All Analyzer	445	4.62	0.38	8.12	6
Your Analyzer :	Siemens Atellica CI 1900	1	-	-	-	-
	Roche cobas c 311	41	4.40	0.15	3.41	-
	Erba EM 200	40	4.74	0.37	7.70	1
	Erba XL-200	35	4.75	0.31	6.56	-
	Diasys 200 Pro	35	4.56	0.39	8.57	-
	Roche cobas c 111	25	4.45	0.29	6.61	-
	Fuji Dri-Chem NX500/i	23	4.96	0.25	4.96	-
	Beckman Coulter DxC 700 AU	23	4.57	0.13	2.74	-

Remarks: Interpretation of your reports

- a) If your SDI lies between +/- 2.0 SDI then your results are well within limits.
- b) If your SDI lies between +/-2.0 to 2.99 SDI then it is a warning alert flag.
- c) If your SDI is +/- 3.0 SDI or more then it is an action alert flag.

Interpretation when an analyte is reported for multiple samples in a Round:

- a) Reported on 2 samples:
 - Two out of two pass - Acceptable performance
 - One out of two pass - Review for random error & take action if appropriate
 - Both failed - Unacceptable performance, Review for systematic error
- b) Reported on 3 samples:
 - All pass - Acceptable performance
 - Two out of three pass - Review for random error & take action if appropriate
 - One out of three pass - Unacceptable performance, Review for systematic error
 - All failed - Unacceptable performance, Review for systematic error

Dr. Puneet Kumar Nigam

Dr Puneet Kumar Nigam
PT coordinator & Technical Manager, MHL EQAS
Unit No. 409-416.
Commercial Building - 1A
Kohinoor Mall, Kirool Road, Kurla (W),
Mumbai - 400070

This is a computer generated report hence signature is not required



PC-1022

End of Report

Page 40 of 40